



AP-PT20 IP Speed Dial Extension Terminal

High Performance Broadband Convergence Network
IP Speed Dial Extension Terminal Solution



Product Overview

(Without notice, following described technical spec. can be changed)

AddPac

AddPac Technology

Sales and Marketing

www.addpac.com

Contents

- Product Overview
- Hardware Specification
- Software Service
- Network Service and Features
- Application Area
- Ordering Information



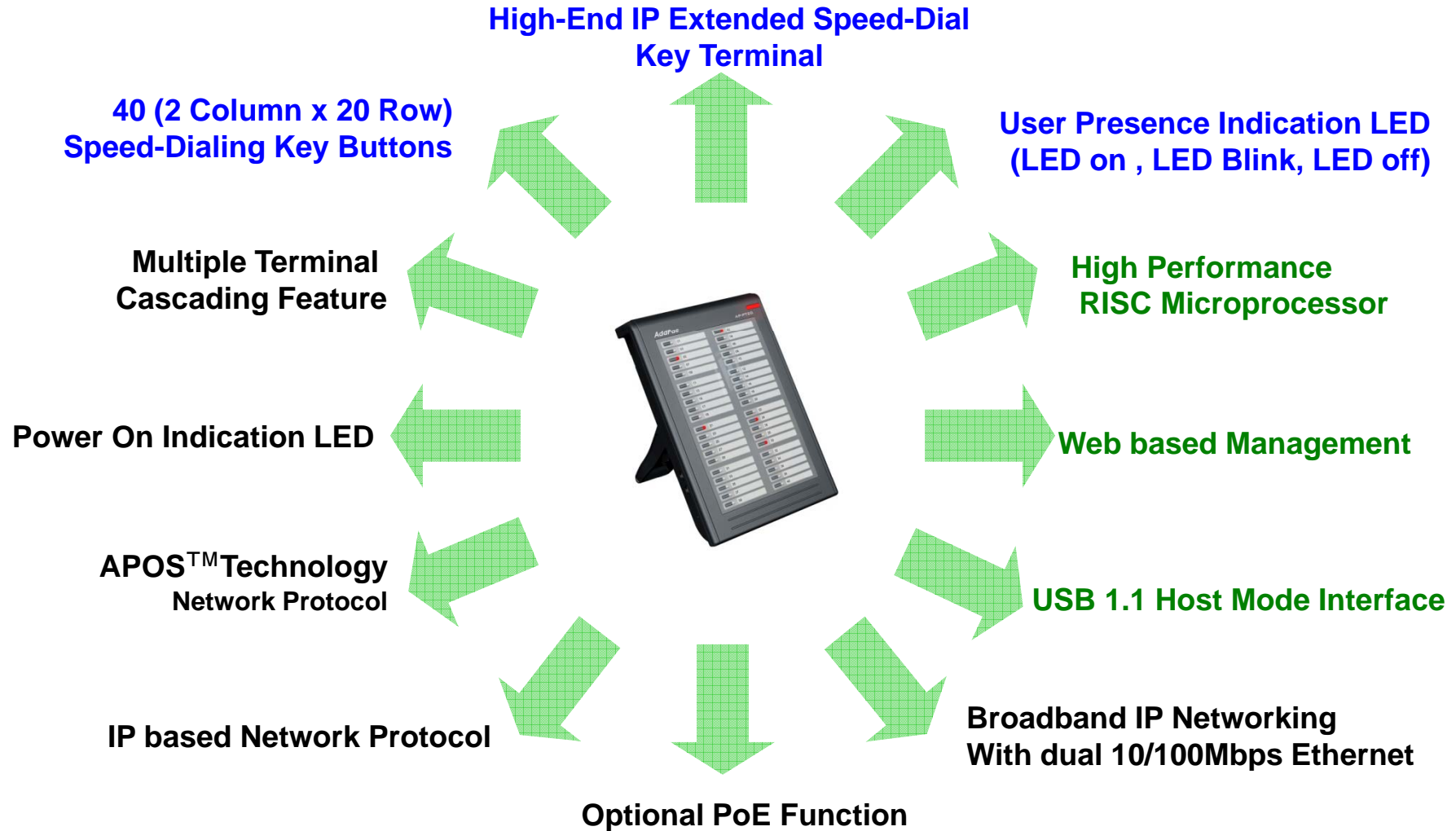
Product Overview

AP-PT20 IP Speed Dial Extension Terminal

- Speed Dialing Terminal with User Presence Indication LAMP
- Inter-working with IP Terminal, Presence Server, Call Manager
- Multiple Terminal Cascading Feature
- User Presence Group Feature
- Firmware Upgradeable Architecture
- PoE (Power over Ethernet) Function : Option

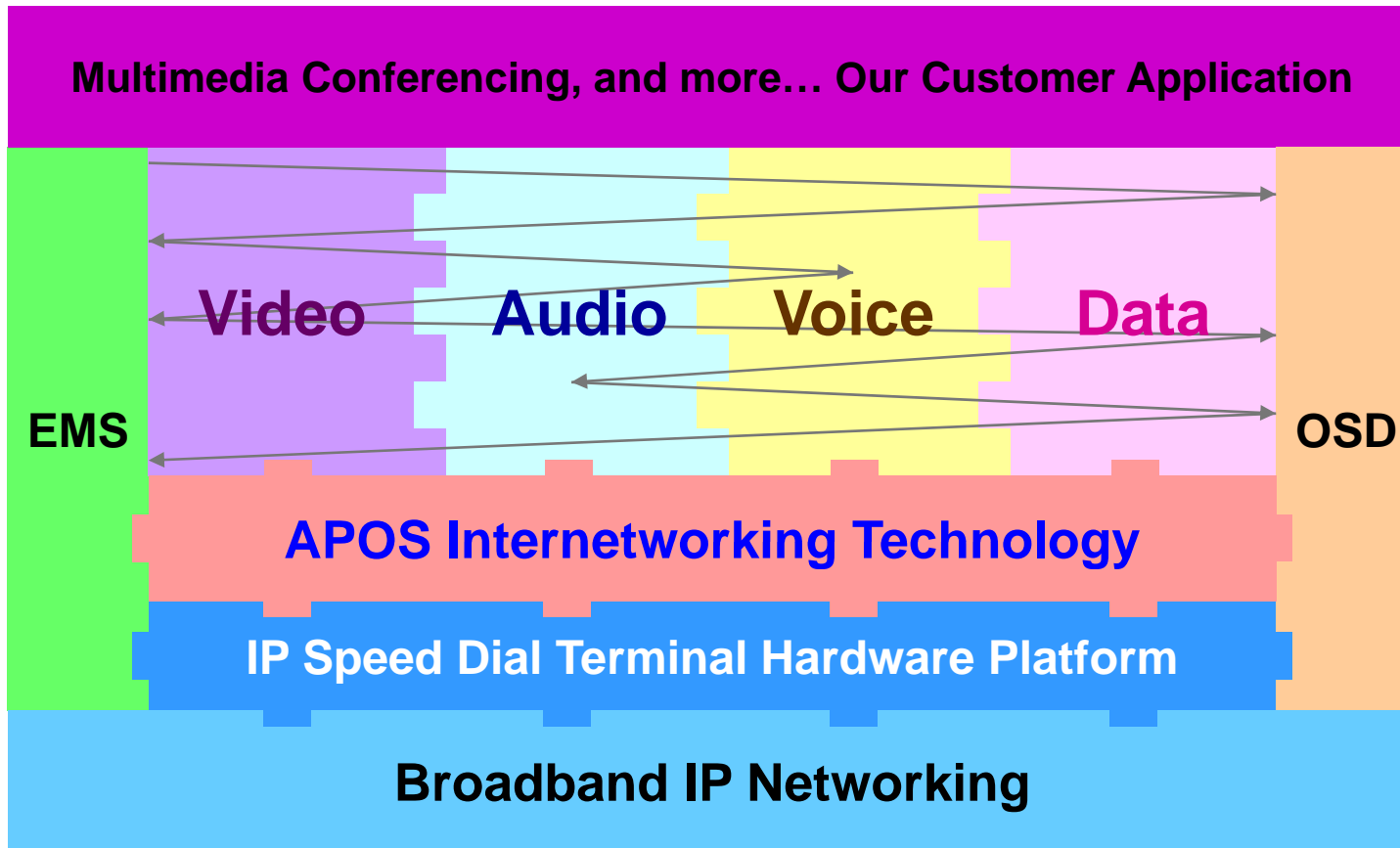
Product Highlights

AP-PT20 IP Speed Dial Extension Terminal



Multimedia Service

AP-PT20 IP Speed Dial Extension Terminal



- APOS : AddPac Internetworking Operating System
- OSD : On- Screen Display
- EMS : Element Management System

Hardware Specification

AP-PT20 IP Speed Dial Extension Terminal

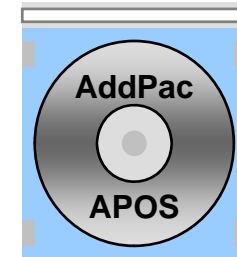
- **RISC Microprocessor Computing Power**
- **40 Speed Dial Key with User Presence LAMP**
- **Optional PoE (Power over Ethernet) Interface**
- **Network Interface**
 - Two(2) 10/100Mbps Fast Ethernet
- **Power Supply**
 - Power over Ethernet (Option)
 - External Power Adaptor (5V, 2A)
 - Power Switch
- **Connector for Cascading**



Software Service

AP-PT20 IP Speed Dial Extension Terminal

- Built-in AddPac APOS Internetworking Software
 - Scalability, Functionality, and Stability Features
- Programmable User Presence Services
- Firmware Upgradeable Architecture
- Industry Standard IP based Network Protocol Features



Network Service and Features

AP-PT20 IP Speed Dial Extension Terminal

- **Network Managements**
 - Standard SNMP Agent (MIB v2) Support
 - Remote Management using Console, Telnet
 - Web based Management using HTTP Server Interface
- **Security Functions**
 - Standard & Extended IP Access List
 - Enable/Disable for Specific Network Protocols
 - Multi-level User Account Management
 - Auto-disconnect for Telnet/Console Sessions
 - PPP User Authentication Supports (PAP & CHAP)
- **Operation & Managements**
 - System Performance Analysis for Process, CPU, Connection Interface
 - Debugging, System Auditing, and Diagnostics Support
 - System Booting and Auto-rebooting with Watchdog Feature
 - System Managements with Data Logging
 - IP Traffic Statistics with Accounting

Network Service and Features

AP-PT20 IP Speed Dial Extension Terminal

- **Network Managements**
 - DHCP Server & Relay Functions
 - Network Address Translation (NAT) Function
 - Port Address Translation (PAT) Function
 - Transparent Bridging (IEEE Standard) Function
 - Spanning Tree Bridging Protocol Support
 - Remote Bridging Support
 - Concurrent Routing and Bridging Support
 - Cisco Style Command Line Interface (CLI)
 - Network time Protocol (NTP) Support

AP-PT20 IP Speed Dial Extension Terminal

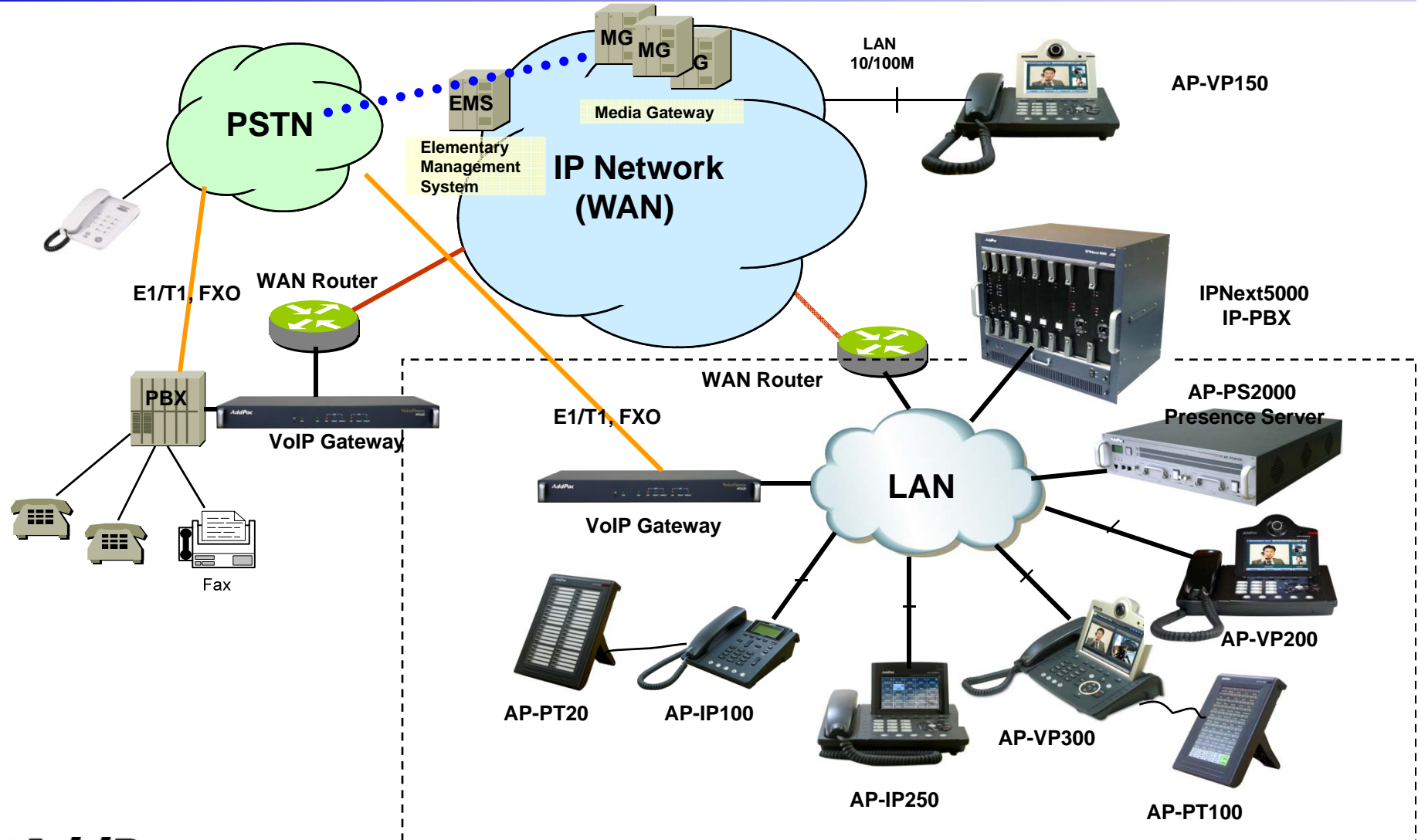
Application Area

- IP Speed Dial Extension Terminal for IP Telephony Service



Standard IP-PBX Application

AP-PT20 IP Speed Dial Extension Terminal



Ordering Information

- **AP-PT20 IP Speed Dial Extension Terminal Hardware**
 - RISC Microprocessor Architecture
 - 40 Speed-dial key button with Presence Indication LAMP
 - Internal Speaker
 - 2-ports 10/100Mbps Fast Ethernet
 - Optional PoE Interface
 - Including Network Cable Set & Ext. Power Supply, etc.
- **Built-in APOS Internetworking Software for AP-PT20**
- **Including 1 Year Hardware Warranty**
- **Product Documents**
 - Install and Operation Guide (PDF)
- **Pricing**
 - AddPac Technology Regional Sales Manager
 - Authorized Sales and Marketing Representatives
 - Please Contact www.addpac.com



Thank you!

AddPac Technology Co., Ltd.
Sales and Marketing

Phone +82.2.568.3848 (KOREA)

FAX +82.2.568.3847 (KOREA)

E-mail sales@addpac.com