

IP Extend Key Pack Solution



AP-PT100



AP-PT50



AP-PT20

AddPac

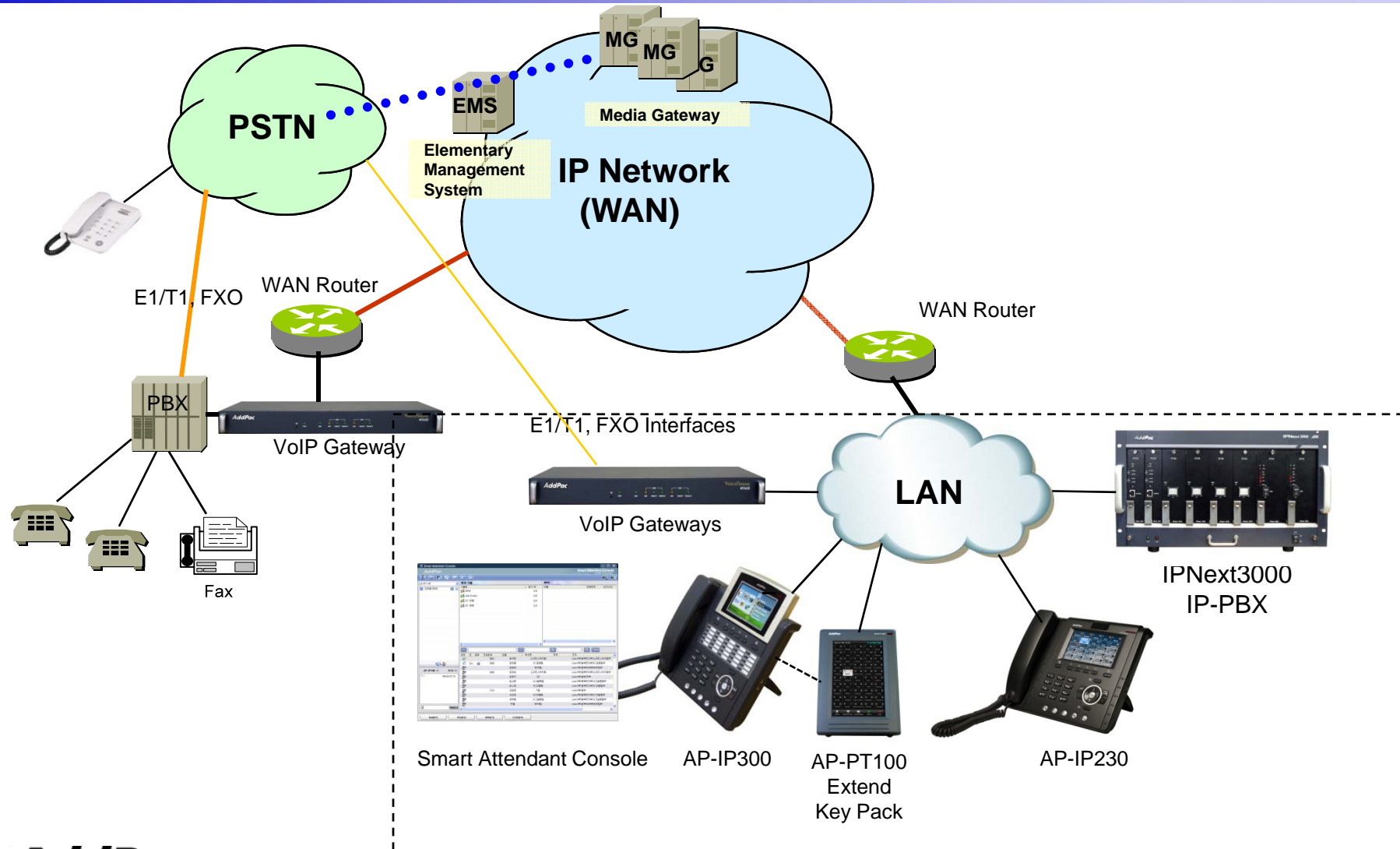
AddPac Technology

2010, Sales and Marketing

Contents

- IP Extend Key Pack Service Diagram
- IP Extend Key Pack Comparison Table
- IP Extend Key Pack Series
 - AP-PT100
 - AP-PT50
 - AP-PT20
- Smart Attendant Console Application

IP Extend Key Pack Service Diagram



IP Extend Key Pack Comparison Table

Model	AP-PT100	AP-PT50	AP-PT20
Service Features			
Key Type	7 inch LCD Touch Screen	Push Button with User Presence Indication LAMP	Push Button with User Presence Indication LAMP
Key Number	Default : 9(row) x 4(column) = 36	60 Key	40 Key
User Presence Indication	Support	LED on, LED off, LED Blink	LED on, LED off, LED Blink
Multiple Cascading	Support	Support	Support
Speaker	Support	Support	Support
LAN Port	2	2	2
PoE(Optional)	Support	Support	Support
Application	IP Phone or Video Phone Extend Key Pack	IP Phone or Video Phone Extend Key Pack	IP Phone or Video Phone Extend Key Pack

AP-PT100 IP Extend Key Pack



Main Features

AP-PT100 IP Extend Key Pack

- User Presence and Touch Screen based Speed Dialing Terminal
- “7 Inch Color TFT LCD
- 36 Speed-Dial Key
- Inter-working with IP Terminal, Presence Server, Call Manager
- Multiple Terminal Cascading Feature
- User Presence Indication Service
- User Presence Group Feature
- Firmware Upgradeable Architecture
- PoE (Power over Ethernet) Function
- Smart Web Manager
- Internal Speaker

Hardware Specification

AP-PT100 IP Extend Key Pack

A square logo with a dark blue background and white text. The text reads "RISC" on the top line and "CPU" on the bottom line. The logo is set within a light gray square border.

RISC
CPU

- RISC+DSP Microprocessor Computing Power
- High Quality 7 Inch Color LCD Panel
- Touch Screen based 36 Speed Dial Key & User Presence Features
- Optional PoE (Power over Ethernet) Interface
- Network Interface
 - Two(2) 10/100Mbps Fast Ethernet
- RS232C Console Interface for CLI
- USB Host Mode Interface
 - USB Memory(Flash, HDD), USB Keyboard, USB Mouse, USB Wifi
- Power Supply
 - Power over Ethernet
 - External Power Adaptor (5V, 3A)
 - Power Switch
- Connector for Cascading

Hardware Specification

AP-PT100 IP Extend Key Pack

RISC
CPU

Front Side

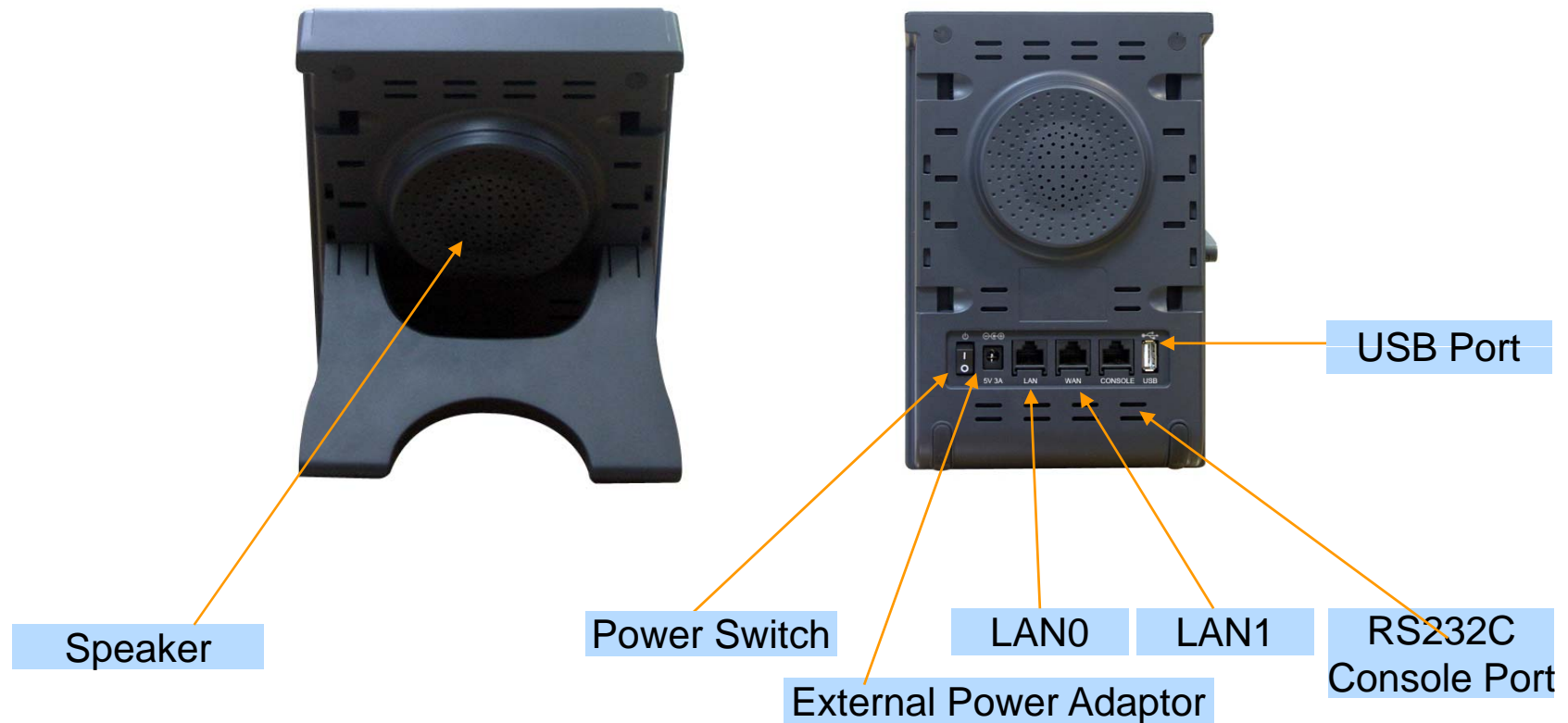


Hardware Specification

AP-PT100 IP Extend Key Pack

RISC
CPU

Back Side



AP-PT50 IP Extend Key Pack



Main Features

AP-PT50 IP Extend Key Pack

- Speed Dialing Terminal with User Presence Indication LAMP
- 60 (3 Column x 20 Row) Speed-Dial Key Buttons
- Inter-working with IP Terminal, Presence Server, Call Manager
- Multiple Terminal Cascading Feature
- User Presence Indication LED (on, off, blink)
- User Presence Group Feature
- Firmware Upgradeable Architecture
- PoE (Power over Ethernet) Function

Hardware Specification

AP-PT50 IP Extend Key Pack

RISC
CPU

- RISC+DSP Microprocessor Computing Power
- 60 Speed Dial Key with User Presence LAMP
- Optional PoE (Power over Ethernet) Interface
- Network Interface
 - Two(2) 10/100Mbps Fast Ethernet
- Power Supply
 - Power over Ethernet (Option)
 - External Power Adaptor (5V, 2A)
 - Power Switch
- Connector for Cascading

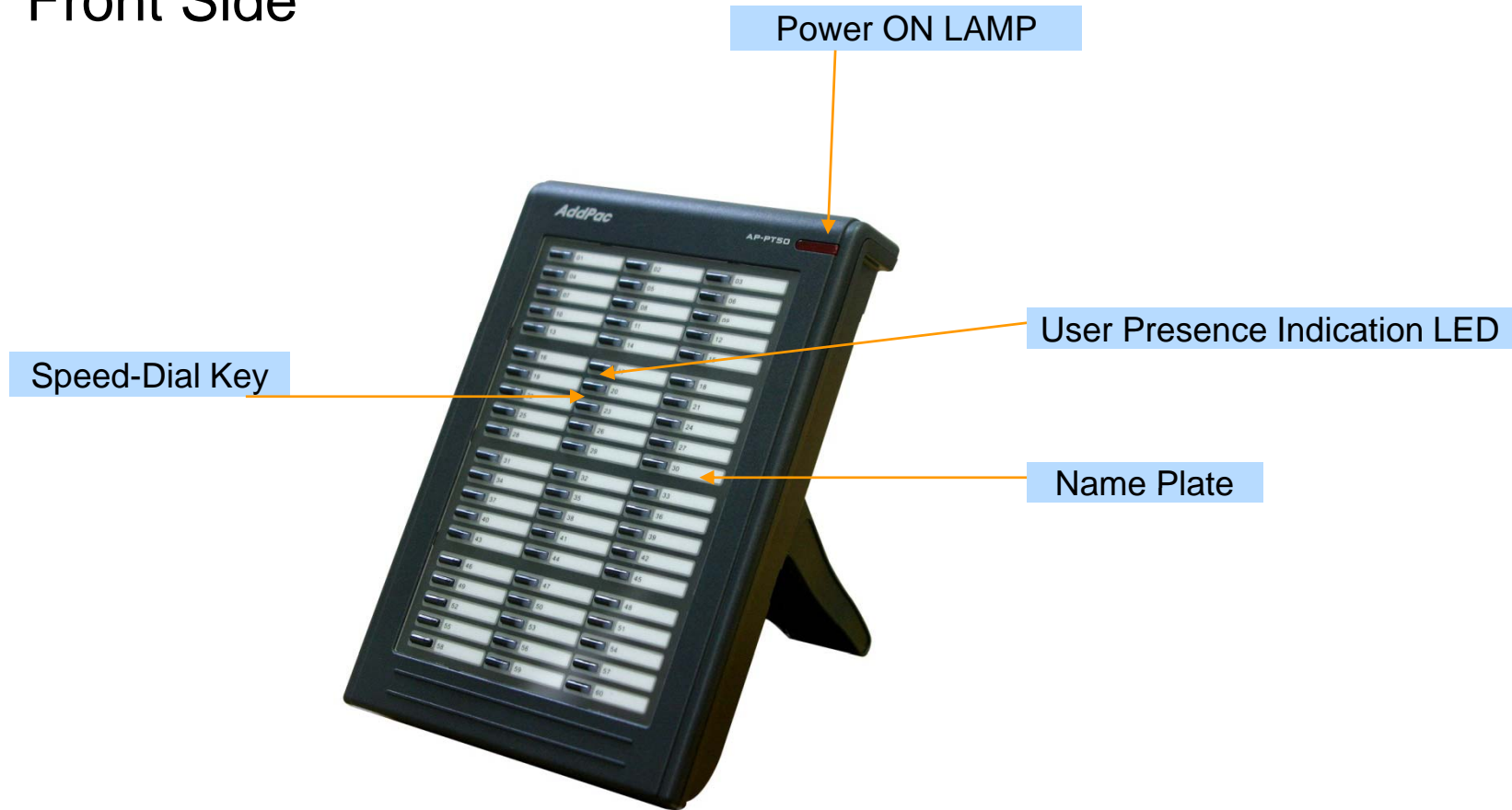


Hardware Specification

AP-PT50 IP Extend Key Pack

RISC
CPU

Front Side

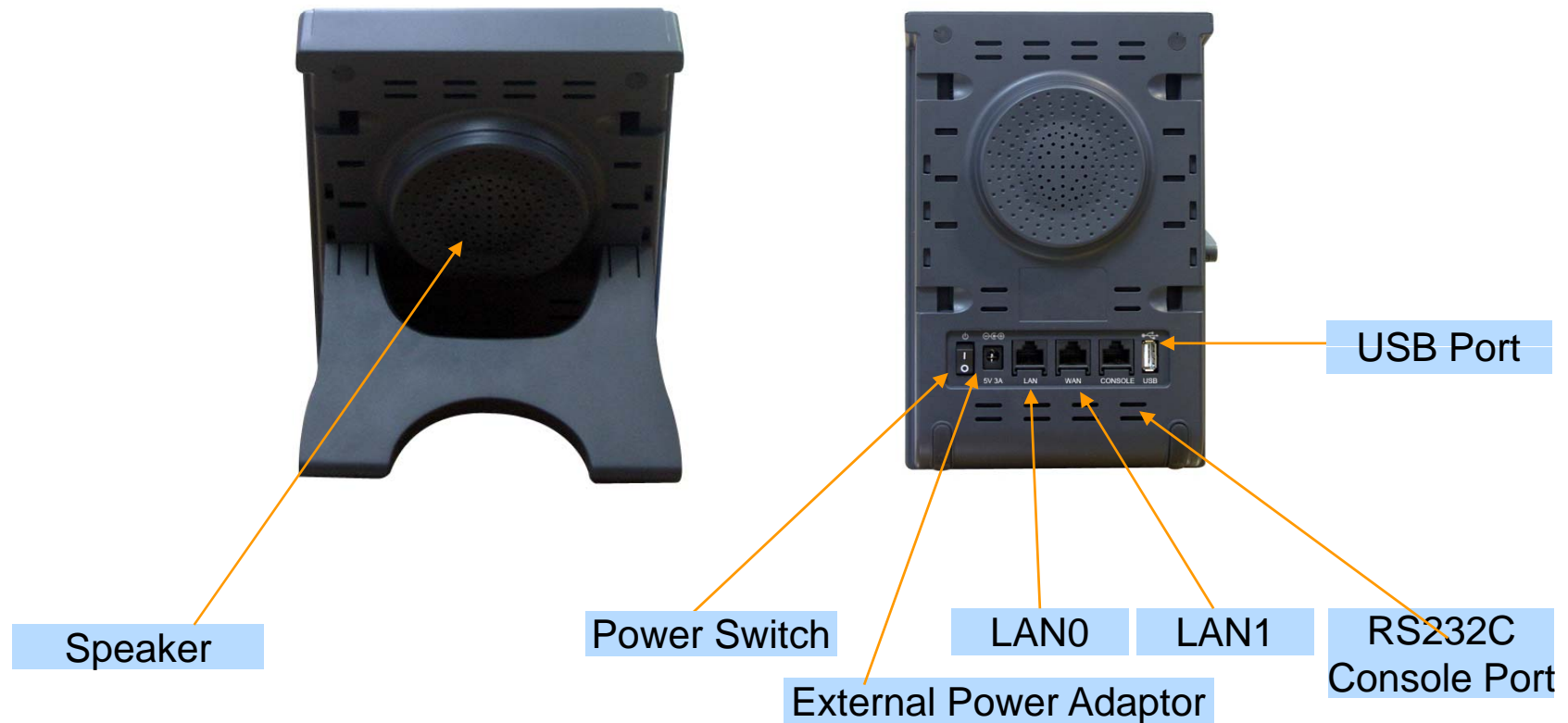


Hardware Specification

AP-PT50 IP Extend Key Pack

RISC
CPU

Back Side



AP-PT20 IP Extend Key Pack



Main Features

AP-PT20 IP Extend Key Pack

- Speed Dialing Terminal with User Presence Indication LAMP
- 40 (2 Column x 20 Row) Speed-Dial Key Buttons
- Inter-working with IP Terminal, Presence Server, Call Manager
- Multiple Terminal Cascading Feature
- User Presence Indication LED (on, off, blink)
- User Presence Group Feature
- Firmware Upgradeable Architecture
- PoE (Power over Ethernet) Function

Hardware Specification

AP-PT20 IP Extend Key Pack

RISC
CPU

- RISC+DSP Microprocessor Computing Power
- 40 Speed Dial Key with User Presence LAMP
- Optional PoE (Power over Ethernet) Interface
- Network Interface
 - Two(2) 10/100Mbps Fast Ethernet
- Power Supply
 - Power over Ethernet (Option)
 - External Power Adaptor (5V, 2A)
 - Power Switch
- Connector for Cascading

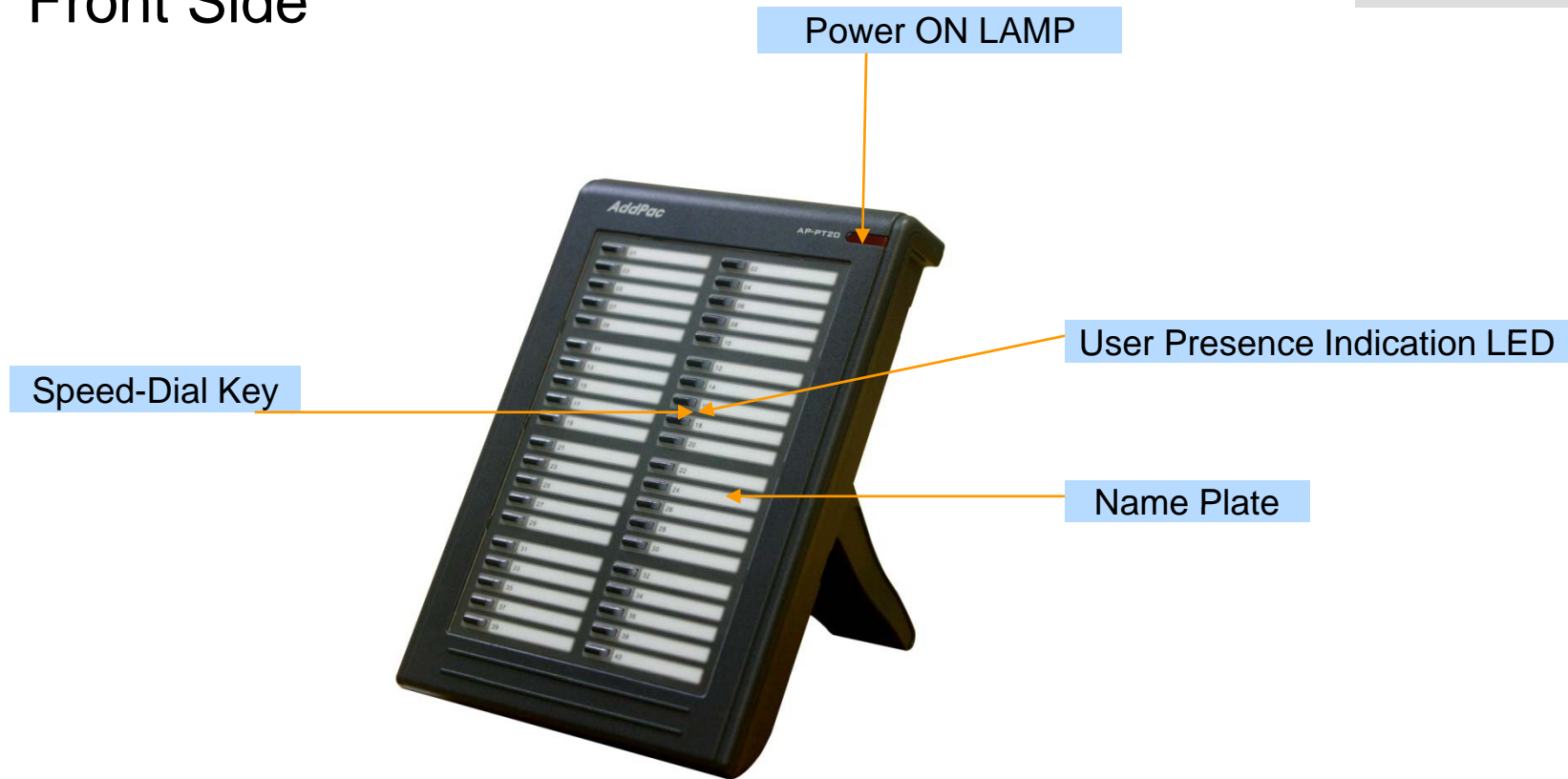


Hardware Specification

AP-PT20 IP Extend Key Pack

RISC
CPU

Front Side

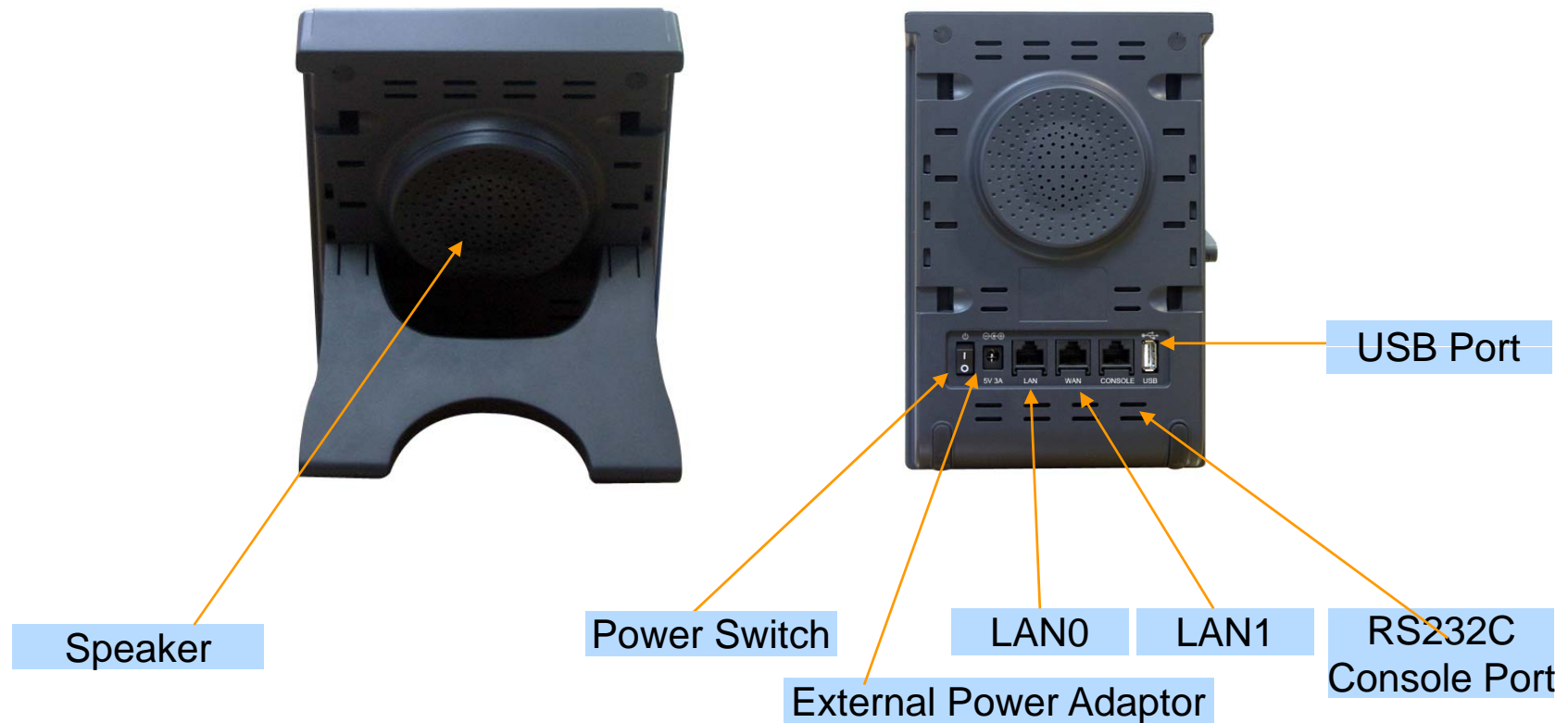


Hardware Specification

AP-PT20 IP Extend Key Pack

RISC
CPU

Back Side

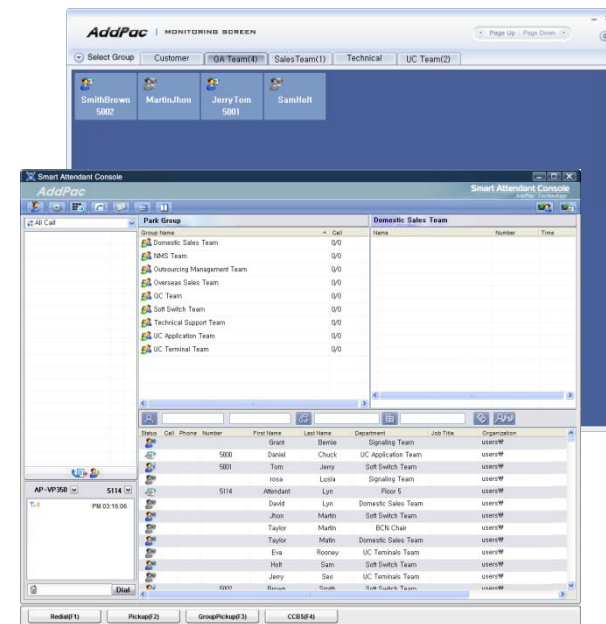




Smart Attendant Console

Contents

- Smart Attendant Console Overview
- Smart Attendant Console Structure
- Smart Attendant Console System Diagram
- Smart Attendant Console Feature
- Smart Attendant Console UI
 - Main Screen Feature
 - Monitoring Screen and Feature
 - Broadcasting Screen and Feature
 - Fire Alerting Screen And Feature

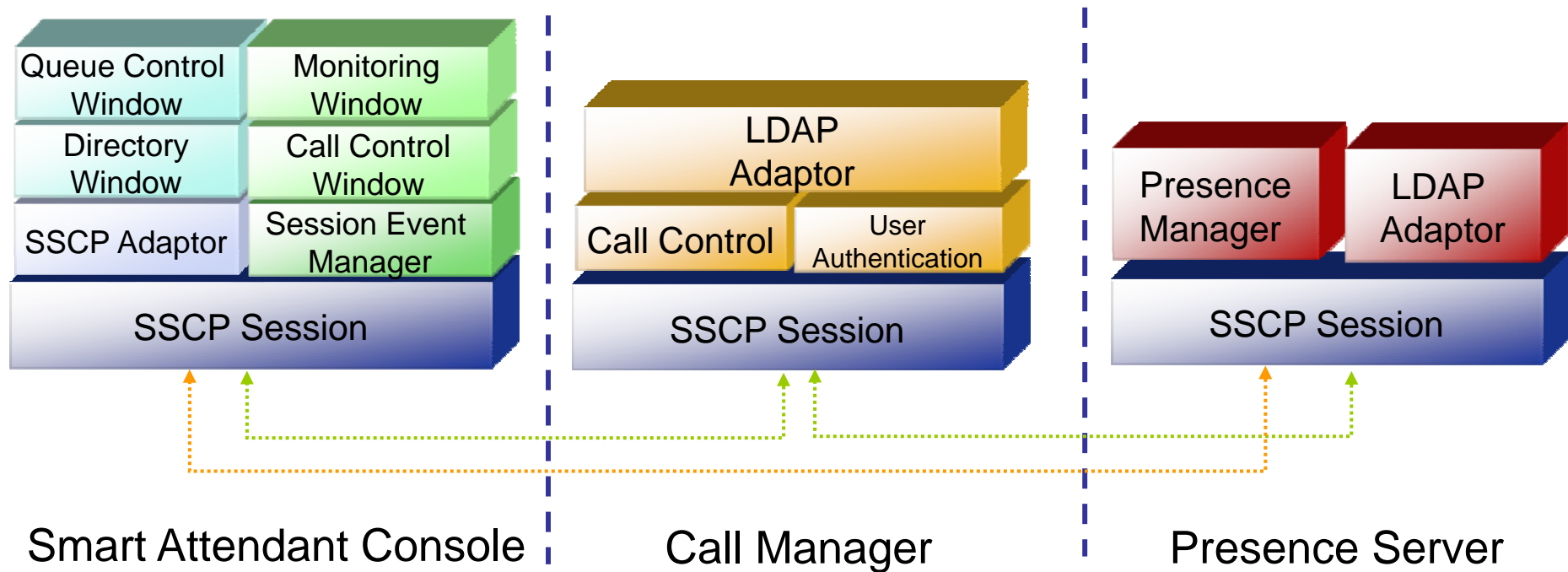


Overview

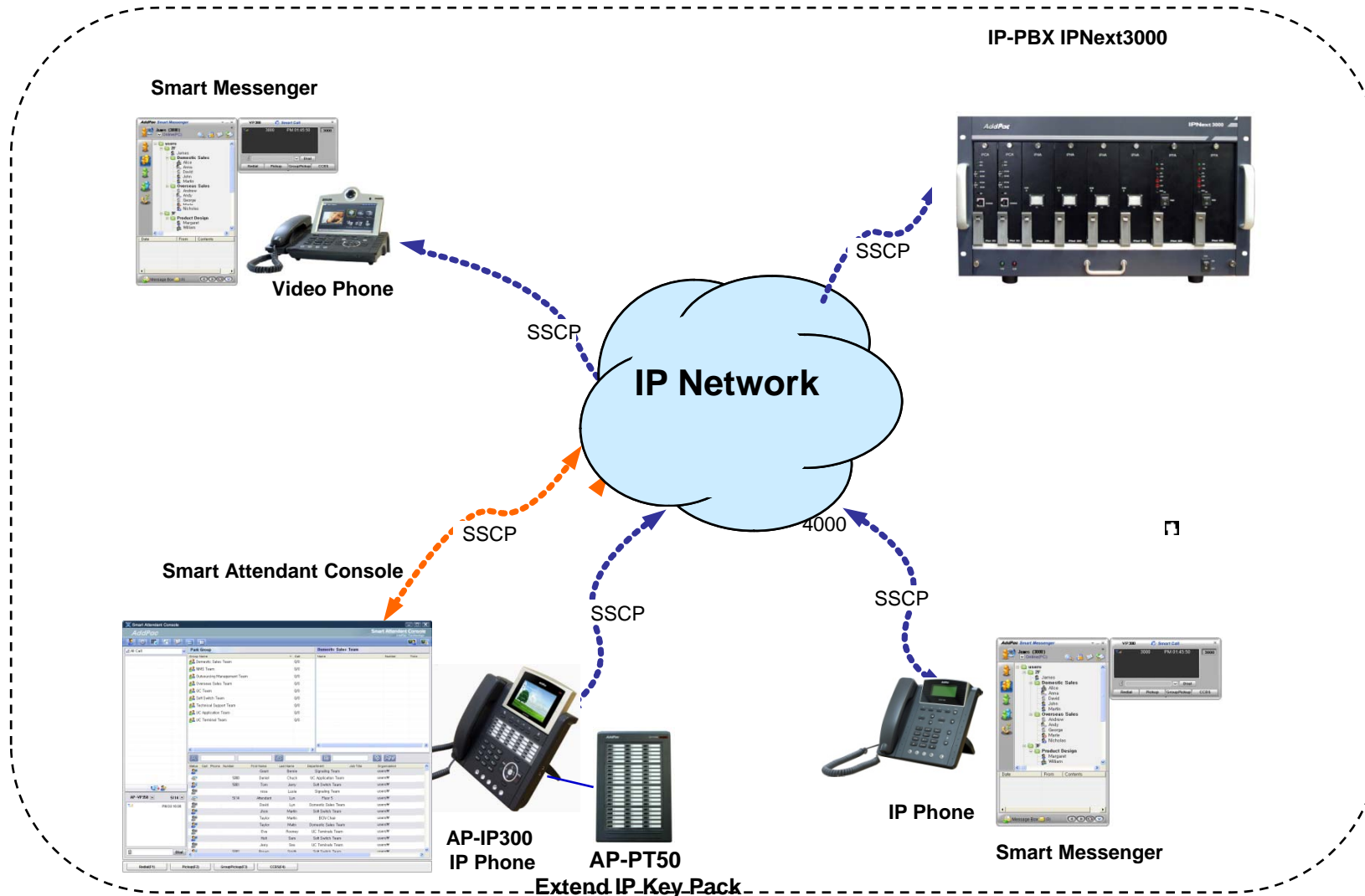
Support Efficiently Call Routing and Smart Presence Service

- Smart Attendant Console Function
 - Support Call Routing Service
 - Support Directory Search
 - Support User Presence Information
 - Support Phone Number Presence Information
 - Interoperation with Directory and Smart Attendant Console
 - Support Smart Call Control and Additional Service Control
 - Support Longest Wait Time based Incoming Call Process
 - Support Private Phone Book
 - Support Drag and Drop Call Control Service
 - Support Remote Broadcasting Control Feature

Structure



System Diagram



Service Features

- Smart Login Service
 - User Login and Logout Feature
- Queue Call Control Feature
 - Wait Time Based Call Answer
 - Longest Wait Call Answer
 - Show Incoming Call by Call Type
 - Internal Call Show
 - External Call Show
 - Show All Call
 - Display Call Status Icon for Waiting Time
 - Call Busy, Call Wait Alerting, Call Wait Warning
 - User Configure the Wait Status Time

Service Features

- Additional Call Service
 - Park Group Monitoring
 - Show Park Group Call Status for All Park Group
 - Show Detail Park Group Call List for Specify Park Group
 - Call Group Park, Park Group Call Pickup
 - Display Call Status Icon for Waiting Time
 - Call Busy, Call Wait Alerting, Call Wait Warning
 - User Configure the Wait Status Time

Service Features

- Additional Call Service
 - Phone Book Feature
 - Group Create, Modify, Delete
 - Contact Add, Delete, Modify
 - Common Feature
 - Dial
 - View Detail Contact Information
 - Send e-mail
 - Dial, Send e-mail Using Phone Book
 - Private Contacts Managing Feature
 - Detail Contact Information View
 - Support Emergency / Night Mode (ToDo)
 - Configure Emergency Voice Content and Enable/Disable Emergency Mode
 - Enable/Disable Night Mode

Service Features

- **Broadcasting Service**
 - Support Broadcasting Control Feature
 - Easy to Start/Stop Broadcasting
 - Show Broadcasting Group Status
 - Set Broadcasting Volume
 - Support User Friendly Design
- **Fire Alerting Service**
 - Automatic Fire Alerting Broadcasting
 - Show Fire Alerting Status

IP Extend Key Pack Series

Thank you!

AddPac Technology Co., Ltd.
Sales and Marketing

Phone +82.2.568.3848 (KOREA)

FAX +82.2.568.3847 (KOREA)

E-mail : sales@addpac.com