



AP-IP300 BcN IP Phone

High Performance Broadband Convergence Network
IP Phone Solution



User Presence Features



AP-PS2000 Presence Server

AddPac

AddPac Technology

Sales and Marketing

www.addpac.com

Contents

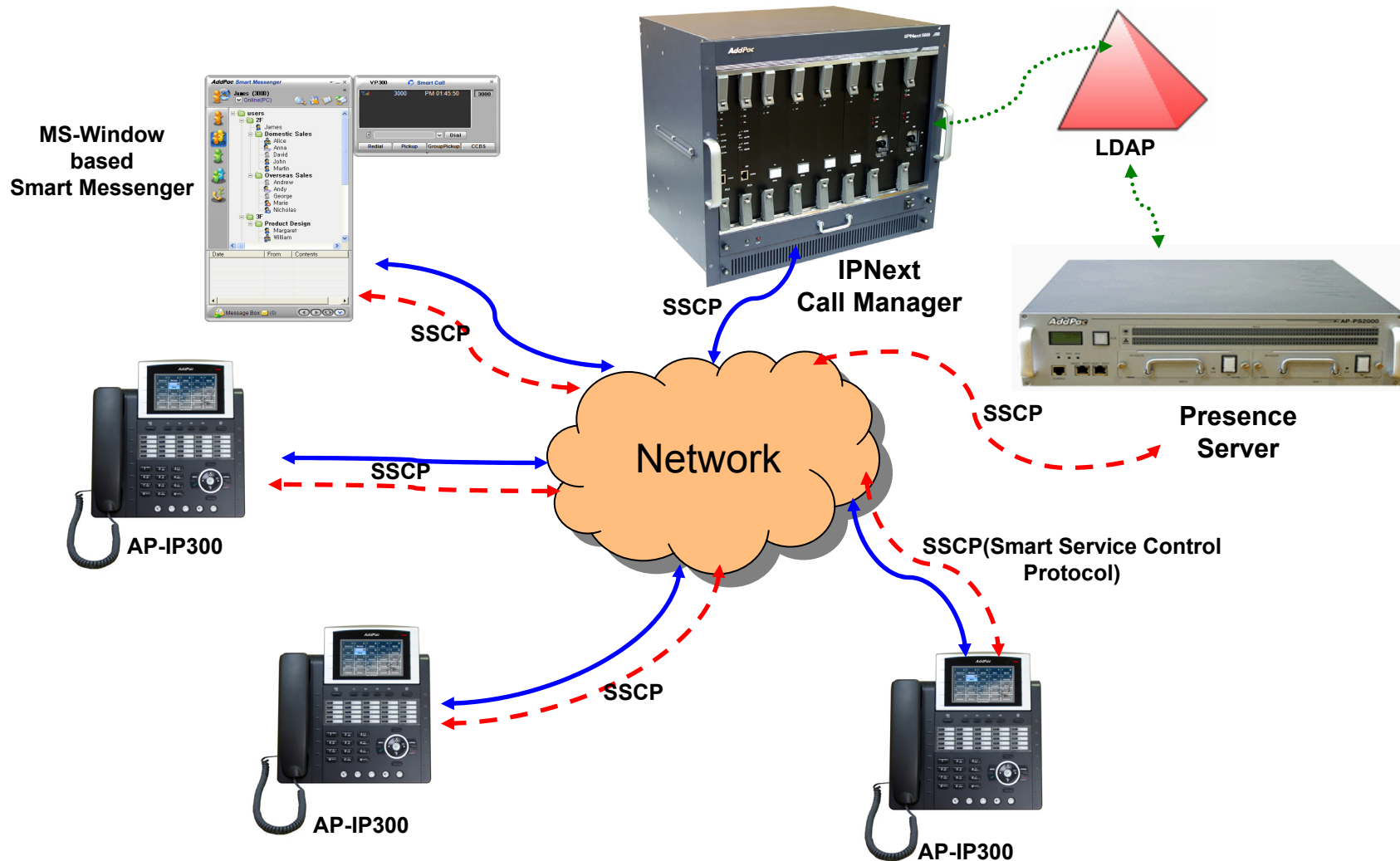
- Overview
- IP Telephony Network Diagram for User Presence Service
- AP-IP300 User Presence Feature
- AP-IP300 User Presence UI
 - Presence Server Input
 - Presence Service Enable
 - Presence Server Login Success
 - Speed Button Profile Select
 - Speed Button Profile Update Notification
 - Speed Button Map View
 - Indicate User Presence Information on LED Lamp
 - Speed Button List View
 - Speed Button Modify



Overview

- **Used to support User Presence Service and Speed Dial**
- **Inter-operate Presence Server and Call Manager**
 - Support User Presence Information
 - Support two or more Speed Button Profile List
- **Support Speed Button Interface**
 - Speed dialing service
 - Support User(Phone Number) Presence Information on LCD Screen and LED
 - Editable global speed button profile, and Save in Phone

IP Telephony Network Diagram for User Presence Service



AP-IP300 User Presence Feature

- **IP300 Supports**
 - User Login and Logout Feature
 - Presence Server Setup
 - Maximum 5 Presence Server Setup
 - Enable/Disable Connection to Presence Server
 - Select Profile
 - Get Speed Button Profile (Global Profile) from Presence Server
 - Select Speed Button Profile in profile list received from Presence Server
 - With Speed Button Profile, user can edit as you want (change to Private Profile)

AP-IP300 User Presence Feature (cont.)

- Phone Book Feature
 - Speed Button view in Map type and List type
 - Speed Button Delete, Modify
 - Represent User Presence Information on OSD in real-time
 - AP-IP300 Phone Book itself Supports
 - Group Create, Modify, Delete
 - Contact Add, Delete, Modify
 - Search Contact by number, name, speed dial number
- Speed Button LED
 - Get User Presence Information in real-time
 - Connect Call using one Button (no need to press all dial digits)

AP-IP300 User Presence UI



Presence Server Input

Server Name	IP Address	Port
Presence Server 1	172.17.	5051
Presence Server 2	172.17.252.2	5051
Presence Server 3		

NUM1 1 2 3 4 5 6 7 8 9 *./ 0 #

BackSpace OK Save All Input Mode

- Presence Server
 - Input Presence Server IP address and Port number to Connect, maximum 5 server info enable
 - Support IPv4, IPv6 address
 - Terminal try to connect to the first server, if it fails, terminal try to connect to next Presence Server

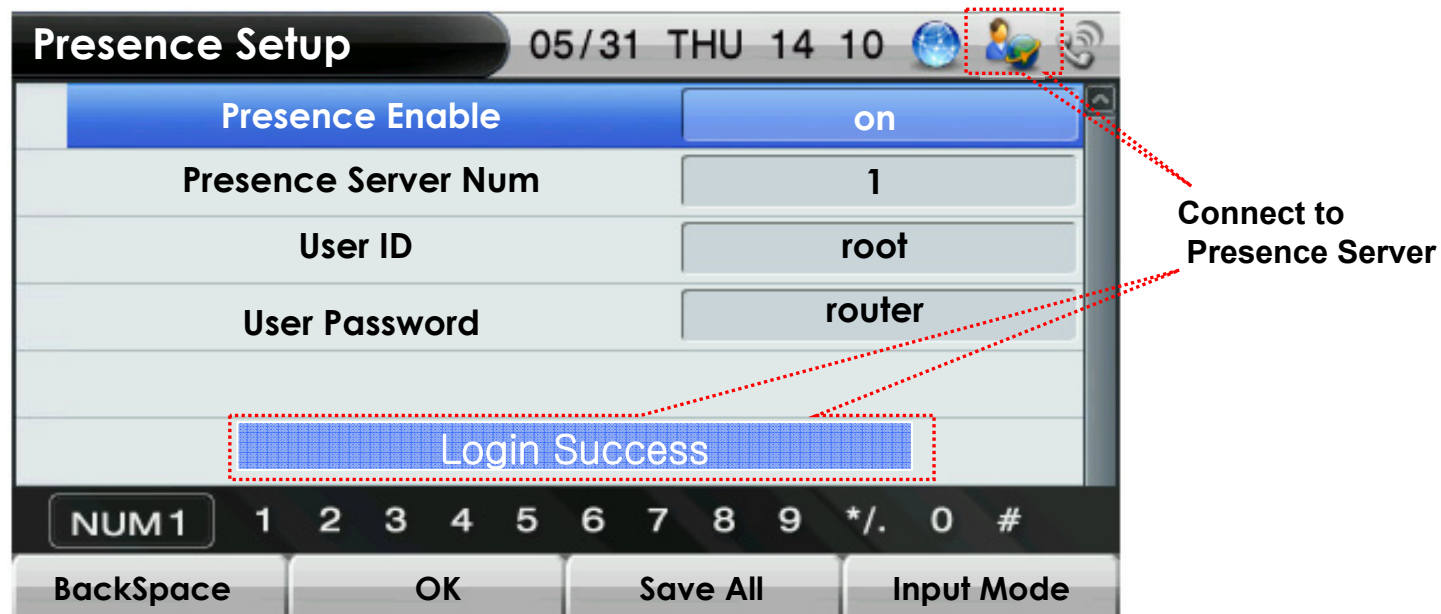
Presence Service Enable

Field	Value
Presence Enable	on
Presence Server Num	1
User ID	root
User Password	router

Toggle using left/right arrow key

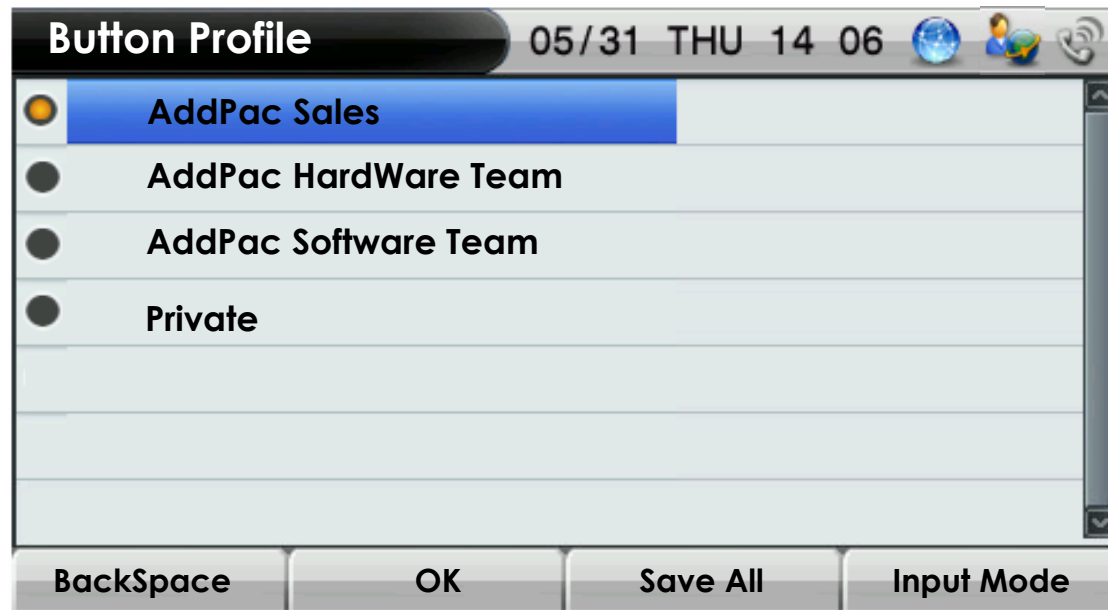
- Presence Setup
 - Presence Function enable/disable
 - Presence Server Num : the number of Presence Server in Presence Server List (This Can't be editable by user)
 - User Id, Password for Presence Server Login

Presence Server Login Success



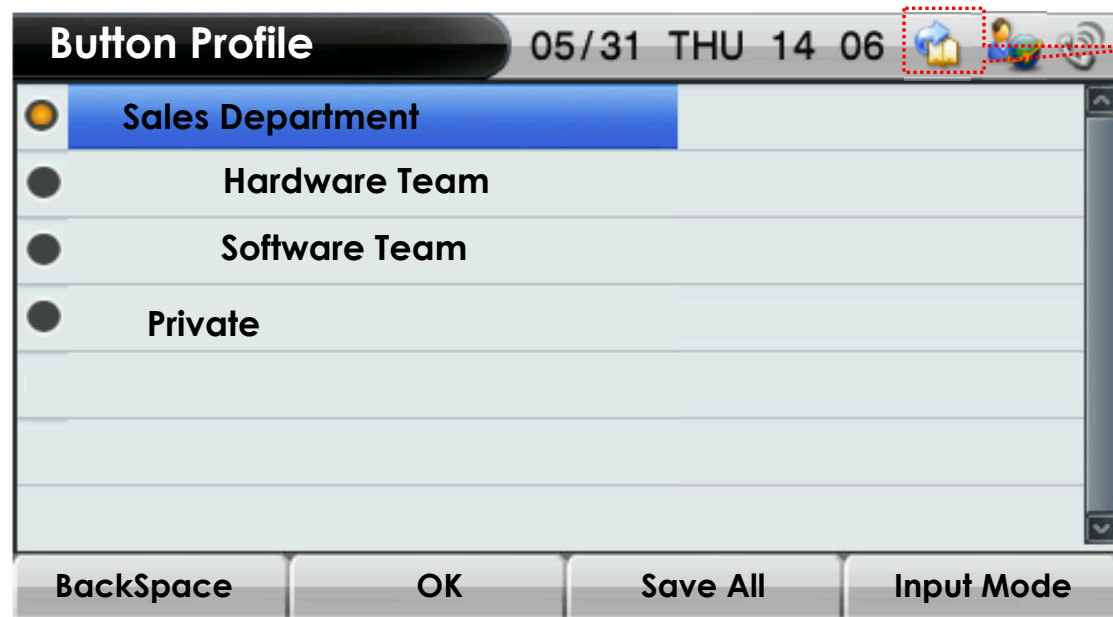
- After input Login Information, Press OK
 - Login result popup on the bottom
 - Icon Change on right side of the top
 - If Login is success ,“Login Success” Message will appear on the bottom of the screen

Speed Button Profile Select





- After connect to Presence Server, Terminal get Speed Button Profile List from Presence Server
 - User can Get Speed Button Profile which you select in list
 - If user don't want to get Speed Button Profile, select 'Private'. User can register or modify Speed Button Profile as user want.

Speed Button Profile Update Notification



Speed Button Profile Update Notify

- When Speed Button Profile Update Notify comes
 - Icon Change to 
 - After select Speed Button Profile, user get Updated Speed Button Profile from Presence Server and Icon Change back to 

Speed Button Map View

Phone number State

Name

1000 Jim	1001 Eujin	1002 Cindy	1003 Carry	1004 Olson
1005 Matthew	1006 Anji	1007 Jeorge	1008 Pitt	

Idle Status Icons

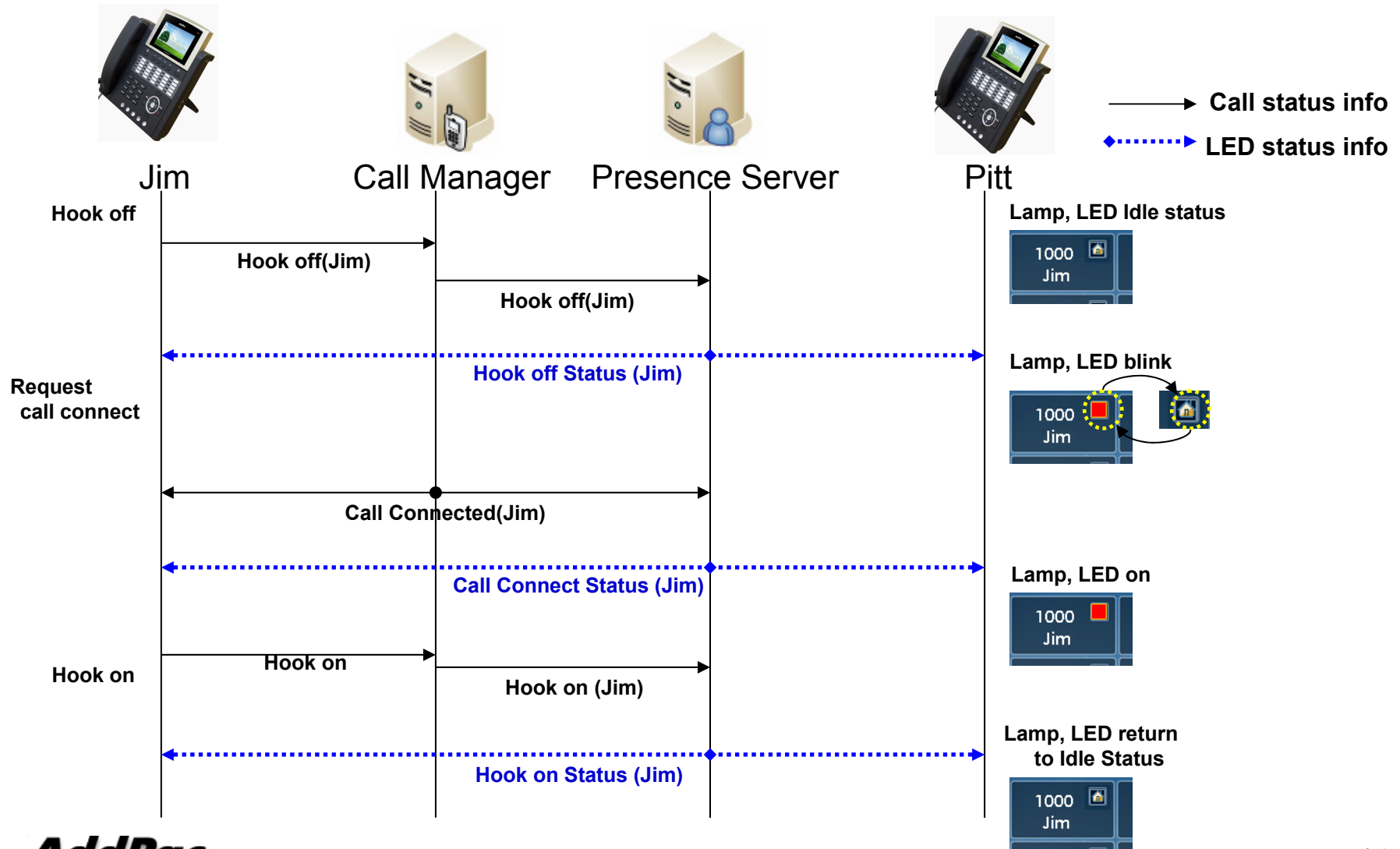
- Home
- Office
- CellPhone
- Etc

Call Status Icon

- Icon, LED on : hook off, calling status
- Icon, LED Blink : ringing status

- Show Button Profile in Map Type. The layout is same as Speed Button Keys on the KeyPad
- Icon means
 - In Idle Status : place of phone number
 - In Call Status : Lamp and LED turn on or blink. Each means difference status.

Indicate User Presence Information on LED Lamp



Speed Button List View



The screenshot shows a window titled "Speed Button" with a list of seven speed buttons. Each button is represented by a number in a small box, an icon, a name, and a number. The buttons are: 1 (house icon) Jim 1000, 2 (cube icon) Eujin 1001, 3 (house icon) Cindy 1002, 4 (house icon) Carry 1003, 5 (cube icon) Olson 1004, 6 (cube icon) Matthew 1005, and 7 (phone icon) Anji 1006. Below the list are three buttons: "Delete", "Modify", and "View Map".

Number	Icon	Name	Number
1	House	Jim	1000
2	Cube	Eujin	1001
3	House	Cindy	1002
4	House	Carry	1003
5	Cube	Olson	1004
6	Cube	Matthew	1005
7	Phone	Anji	1006

- Show Button Profile in List Type.
 - If you want to call to Cindy, move to number 3(Cindy), press *OK* or *Send key*
 - Enable delete or modify speed button (Button Profile will change to 'Private')
 - Icon represents the place of a phone number

Speed Button Modify

The screenshot shows a 'Modify Button' dialog box. The title bar contains the text 'Modify Button' and three icons: a globe, a person, and a signal icon. The dialog has three input fields: 'Name' with the text 'Jim', 'Number' with the text '2000', and 'Type' with a dropdown menu showing 'Home'. At the bottom, there is a keyboard layout with 'ENG A' selected and buttons for 'BackSpace', 'OK', 'Save All', and 'Input Mode'.

- Modified Button Information Save in Local.
- After change Phone Number, user can get presence information for new number.



Thank you!

AddPac Technology Co., Ltd.
Sales and Marketing

Phone +82.2.568.3848 (KOREA)

FAX +82.2.568.3847 (KOREA)

E-mail sales@addpac.com