

IPNext IP-PBX Solution for SMB



AddPac

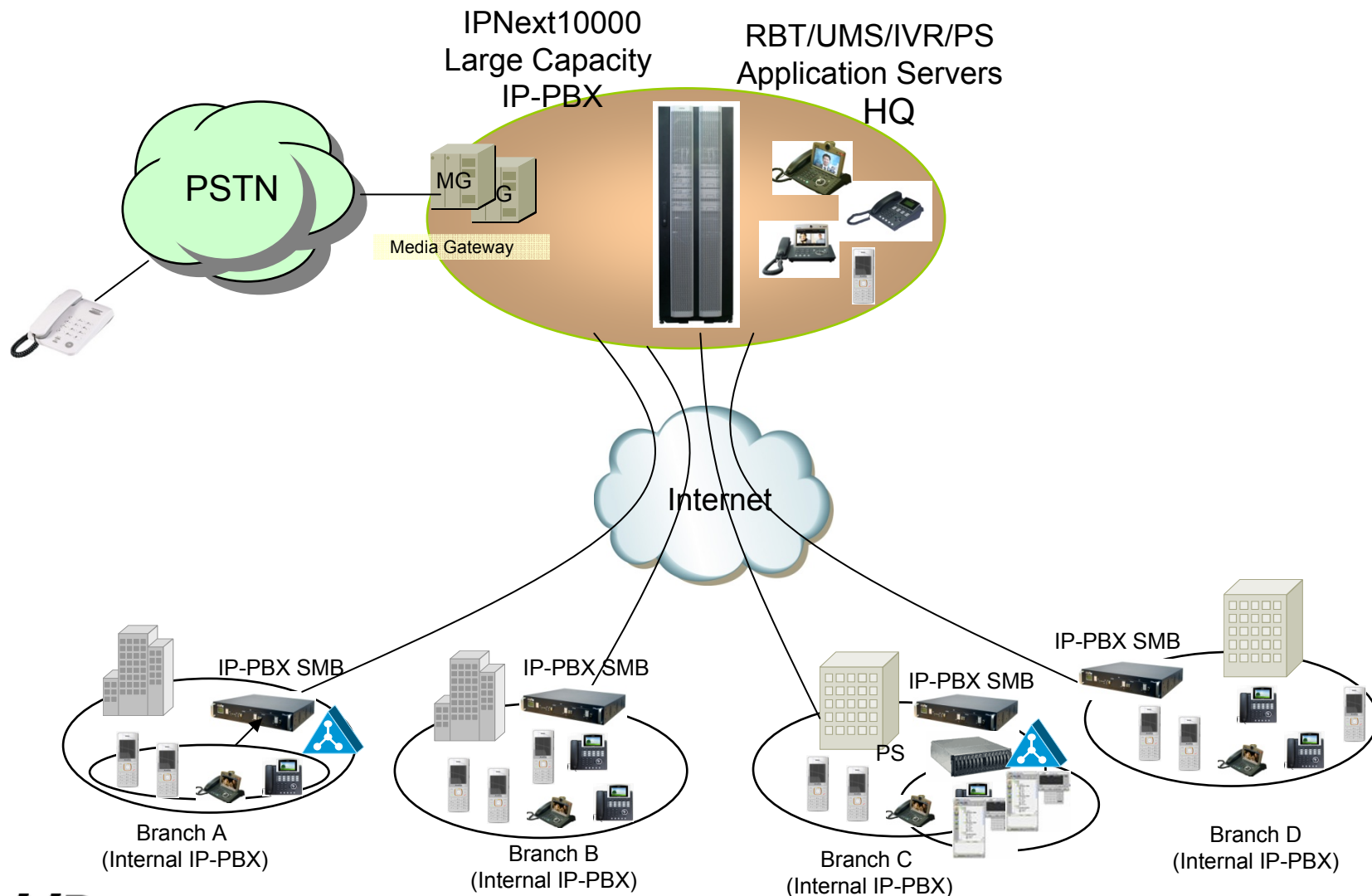
AddPac Technology

2010, Sales and Marketing




Contents


- IPNext SMB IP-PBX Service Diagram
- IPNext SMB IP-PBX Comparison Table
- IPNext SMB IP-PBX Series
 - IPNext230 IP-PBX
 - IPNext190 IP-PBX
 - IPNext180 IP-PBX
- AddPac IP Terminals, Soft Phone, Smart Messenger
- IP Video Phones for IPNext SMB
- IP Phones for IPNext SMB
- SMM (Smart Multimedia Manager) for IPNext SOHO

IPNext SMB IP-PBX Service Diagram



IPNext SMB IP-PBX Comparison Table

		IPNext230	IPNext190	IPNext180
				
Registration User Number		200	150	100
Concurrent Call User Number		60	50	30
IPv4/IPv6 Dual Stack Support		Support	Support	Support
VoIP Signaling	Internal	SIP	SIP	SIP
	External	H.323/SIP	H.323/SIP	H.323/SIP
Powerful IVR, UMS, Media Service, User Presence Service		Support	Support	Support
RTP Proxy Service (IPv6, Private IP)		Support	Support	Support
LAN Port		2	2	2
VoIP Module Slots for PSTN		15 Slots (4 Port Module)	4 Slots (8 Port Module)	2Slots (8 Port Module)
VoIP Interface		FXS, FXO, E&M,E1/T1	FXS, FXO,E1/T1	FXS, FXO ,E1/T1



IPNext230 SMB IP-PBX

Main Features

IPNext230 IP-PBX for SMB

- SIP Application Server, Proxy, Registrar and Location Server
- Multiple ITSP Trunk with SIP & H.323 Accounts Support
- High Performance RISC & Programmable DSP Architecture
- Two(2) 10/100Mbps Fast Ethernet (IP Share ,etc)
- 15 Module Slots for VoIP Gateway Interface, Up to 60 Port
- FXS, FXO, E&M, Audio Module, Optional E1/T1 Interface
- VoIP Gateway : G.711/G.726/G.723/G.729, T.38 Fax , VAD, etc
- Powerful Network Protocols (PPPoE, DHCP, Static Routing, etc)
- IPv4/IPv6 Dual Stack
- RTP Proxy Function Embedded for Private IP and IPv6 Address Interworking
- User Presence Service for Smart Multimedia Messenger and Smart IP Phone
- IVR Scenario Editor, Three Party Conference (G.711)
- Unified Messaging Service (Voice Mail, etc)
- Firmware Upgradeable Architecture
- Smart Multimedia Manager for IP-PBX Management
- Smart Messenger Service for UC
- Advanced Voice QoS Mechanism
 - Various Call Scenario (Call Pickup, Call Park, Call Transfer, etc)
 - Various IP Terminal Support (Video Phone, IP Phone, WiFi Phone, Soft Phone)

Hardware Specification

IPNext230 IP-PBX for SMB

RISC
CPU

High-end
DSP

- **RISC Microprocessor Computing Power**
- **Main Chassis**
 - **Network Interface**
 - Two(2) 10/100Mbps Fast Ethernet
 - One(1) RS-232C Console (RJ45)
 - **15 VoIP Module Slots for FXS, FXO etc**



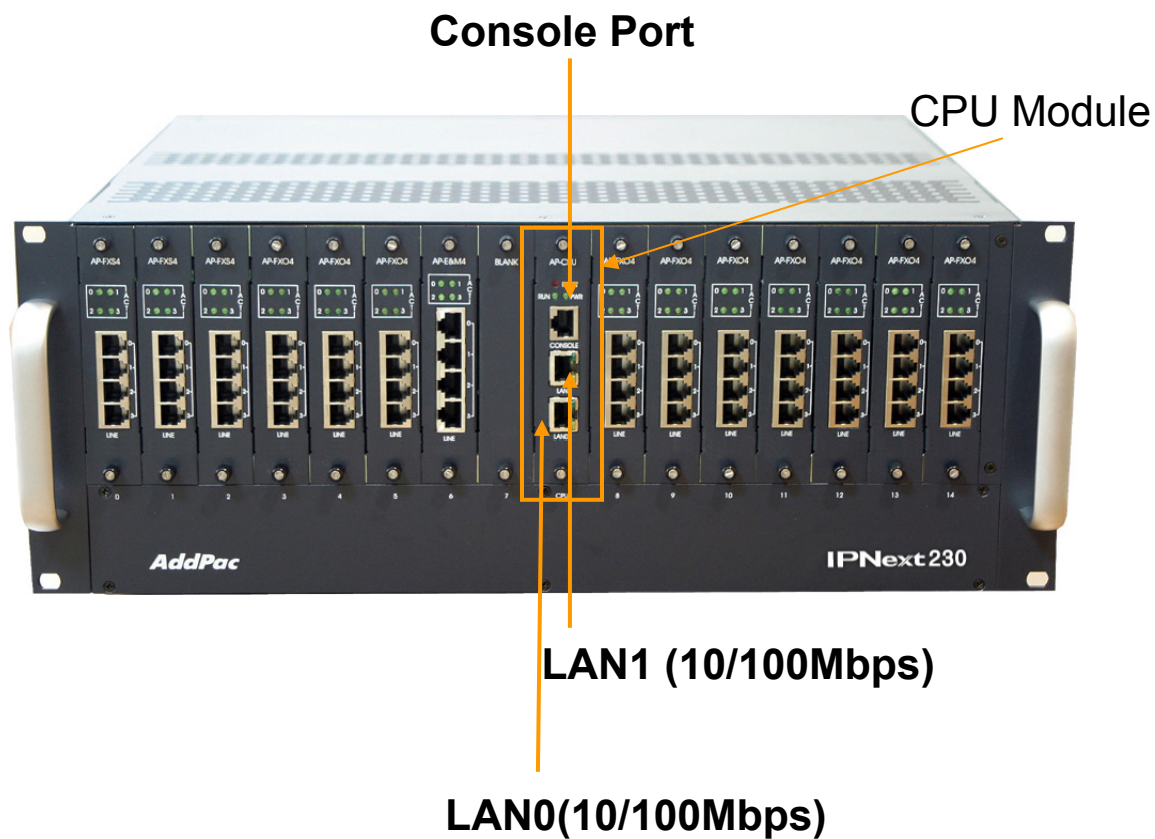
Hardware Specification

IPNext230 IP-PBX for SMB

RISC
CPU

High-end
DSP

IPNext 230 Front Side



Hardware Specification

IPNext230 IP-PBX for SMB

RISC
CPU

High-end
DSP

IPNext 230 Back Side

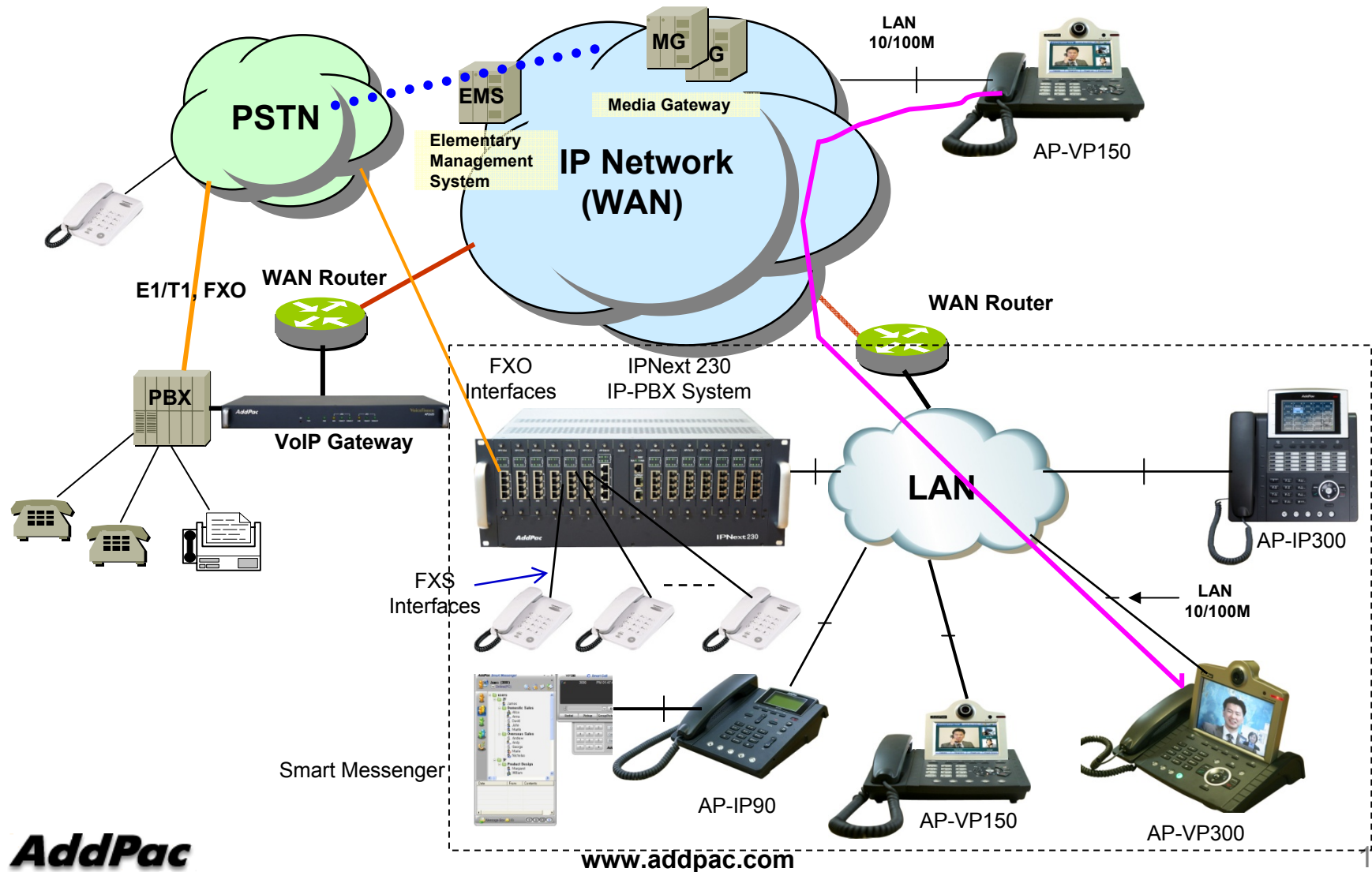


Power Inlet

Power Switch

Network Diagram

IPNext230 IP-PBX for SMB





IPNext190 SMB IP-PBX

Main Features

IPNext190 IP-PBX for SMB

- SIP Application Server, Proxy, Registrar and Location Server
- Multiple ITSP Trunk with SIP & H.323 Accounts Support
- High Performance RISC & Programmable DSP Architecture
- Two(2) 10/100Mbps Fast Ethernet (IP Share ,etc)
- 4 Module Slots for VoIP Gateway Interface, Up to 32 Port
- FXS, FXO Interface (8 Port VoIP Module)
- VoIP Gateway : G.711/G.726/G.723/G.729, T.38 Fax , VAD, etc
- Powerful Network Protocols (PPPoE, DHCP, Static Routing, etc)
- IPv4/IPv6 Dual Stack
- RTP Proxy Function Embedded for Private IP and IPv6 Address Interworking
- User Presence Service for Smart Multimedia Messenger and Smart IP Phone
- IVR Scenario Editor, Three Party Conference (G.711)
- Unified Messaging Service (Voice Mail, etc)
- Firmware Upgradeable Architecture
- Smart Multimedia Manager for IP-PBX Management
- Smart Messenger Service for UC
- Advanced Voice QoS Mechanism
 - Various Call Scenario (Call Pickup, Call Park, Call Transfer, etc)
 - Various IP Terminal Support (Video Phone, IP Phone, WiFi Phone, Soft Phone)

Hardware Specification

IPNext190 IP-PBX for SMB

RISC
CPU

High-end
DSP

- **RISC Microprocessor Computing Power**
- **Main Chassis**
 - **Network Interface**
 - Two(2) 10/100Mbps Fast Ethernet
 - One(1) RS-232C Console (RJ45)
 - **Four(4) VoIP Module Slots for FXS, FXO etc**



Hardware Specification

IPNext190 IP-PBX for SMB

RISC
CPU

High-end
DSP

IPNext 190 Front Side



LAN0(10/100Mbps)
LAN1 (10/100Mbps)
Console Port

Power Inlet
Power Switch

Hardware Specification

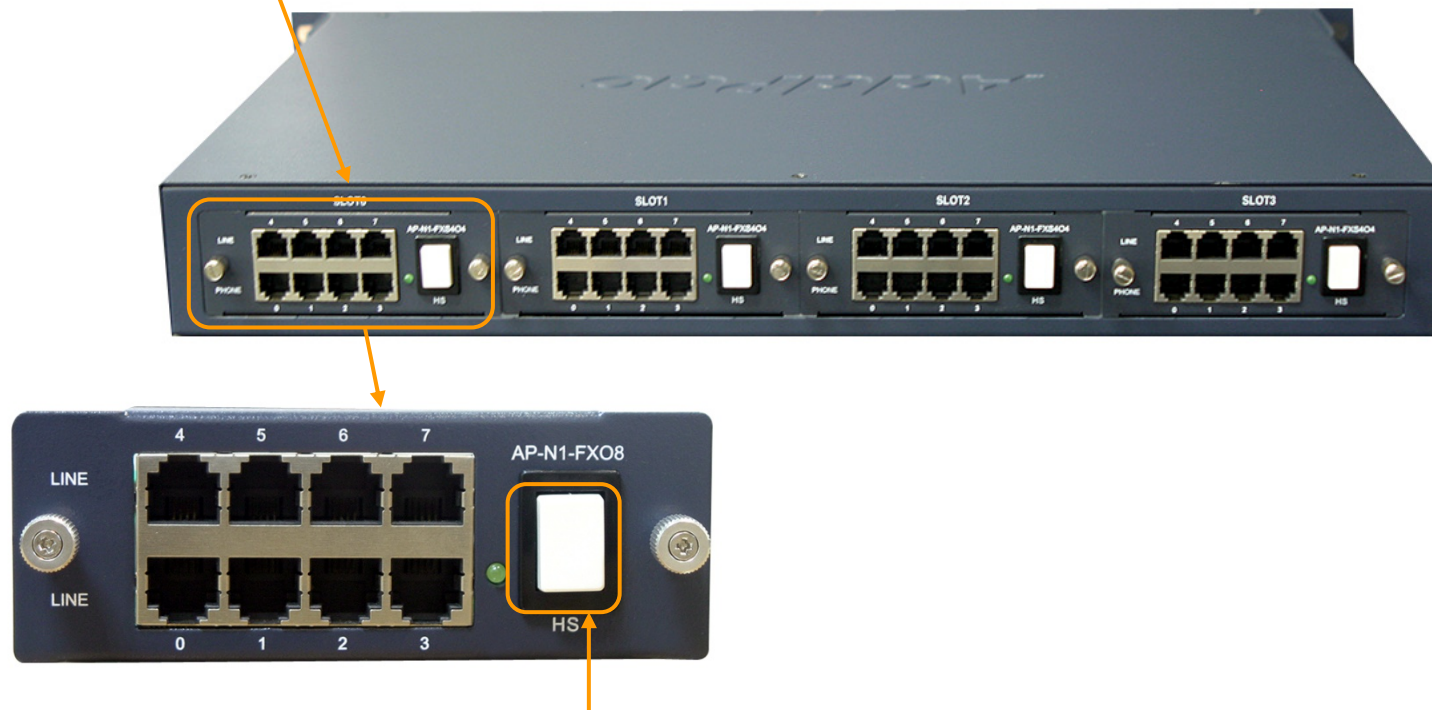
IPNext190 IP-PBX for SMB

RISC
CPU

High-end
DSP

IPNext 190 Back Side

PSTN Interface Module



Hot-Swap Switch & LAMP Indication





Hardware Specification

IPNext190 IP-PBX for SMB

RISC
CPU

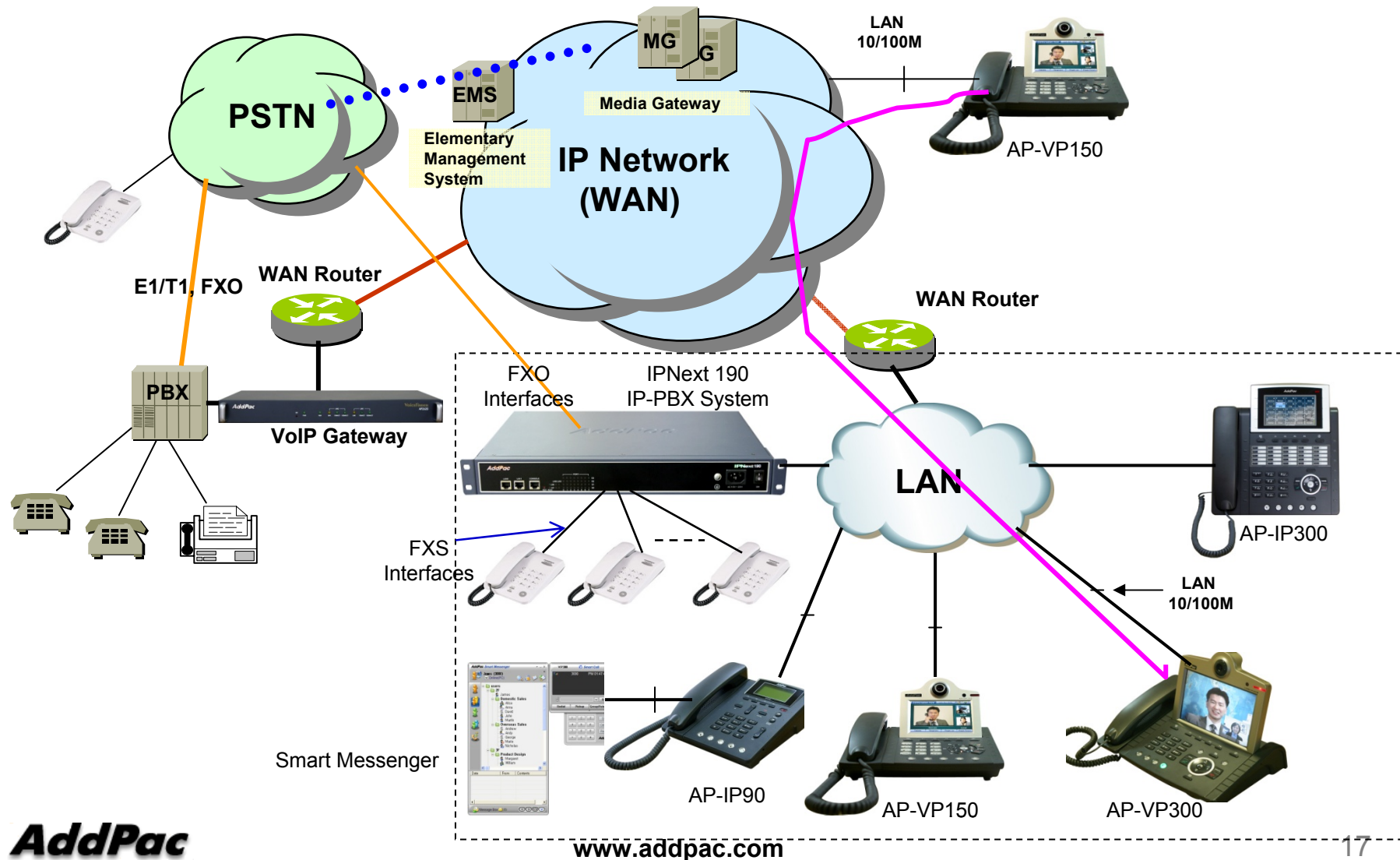
High-end
DSP

- **VoIP Interface Module**

AP-N1-FXS8	 A black 8-port FXS voice processing module with RJ11 ports labeled 0-7 and a central HS switch.	8-Port FXS Voice Processing Module (8 x RJ11)
AP-N1-FXO8	 A black 8-port FXO voice processing module with RJ11 ports labeled 0-7 and a central HS switch.	8-Port FXO Voice Processing Module (8 x RJ11)
AP-N1-FXO4S4	 A black 8-port voice processing module with 4 FXO and 4 FXS ports, labeled 0-7, and a central HS switch.	4-Port FXO and 4-Port FXS Voice Processing Module (8 x RJ11)
AP-N1-E1T1	 A black 1-port VoIP digital E1/T1 interface module with a RJ45 port and a central HS switch.	1-Port VoIP Digital E1/T1 Interface Module(1xRJ45)

Network Diagram

IPNext190 IP-PBX for SMB





IPNext180 SMB IP-PBX

Main Features

IPNext180 IP-PBX for SMB

- SIP Application Server, Proxy, Registrar and Location Server
- Multiple ITSP Trunk with SIP & H.323 Accounts Support
- High Performance RISC & Programmable DSP Architecture
- Two(2) 10/100Mbps Fast Ethernet (IP Share ,etc)
- 2 Module Slots for VoIP Gateway Interface, Up to 16 Port (Analog)
- FXS, FXO Interface (8 Port VoIP Module) Module, Digital E1/T1 Module
- VoIP Gateway : G.711/G.726/G.723/G.729, T.38 Fax , VAD, etc
- Powerful Network Protocols (PPPoE, DHCP, Static Routing, etc)
- IPv4/IPv6 Dual Stack
- RTP Proxy Function Embedded for Private IP and IPv6 Address Interworking
- User Presence Service for Smart Multimedia Messenger and Smart IP Phone
- IVR Scenario Editor, Three Party Conference (G.711)
- Unified Messaging Service (Voice Mail, etc)
- Firmware Upgradeable Architecture
- Smart Multimedia Manager for IP-PBX Management
- Smart Messenger Service for UC
- Advanced Voice QoS Mechanism
 - Various Call Scenario (Call Pickup, Call Park, Call Transfer, etc)
 - Various IP Terminal Support (Video Phone, IP Phone, WiFi Phone, Soft Phone)

Hardware Specification

IPNext180 IP-PBX for SMB

RISC
CPU

High-end
DSP

- **RISC Microprocessor Computing Power**
- **Main Chassis**
 - **Fixed Network Interface**
 - Two(2) 10/100Mbps Fast Ethernet
 - One(1) RS-232C Console (RJ45)
 - **Two(2) VoIP Module Slots for FXS, FXO etc**



Hardware Specification

IPNext180 IP-PBX for SMB

RISC
CPU

High-end
DSP

IPNext 180 Front Side



LAN1 (10/100Mbps)

LAN0(10/100Mbps)

Console Port

Hardware Specification

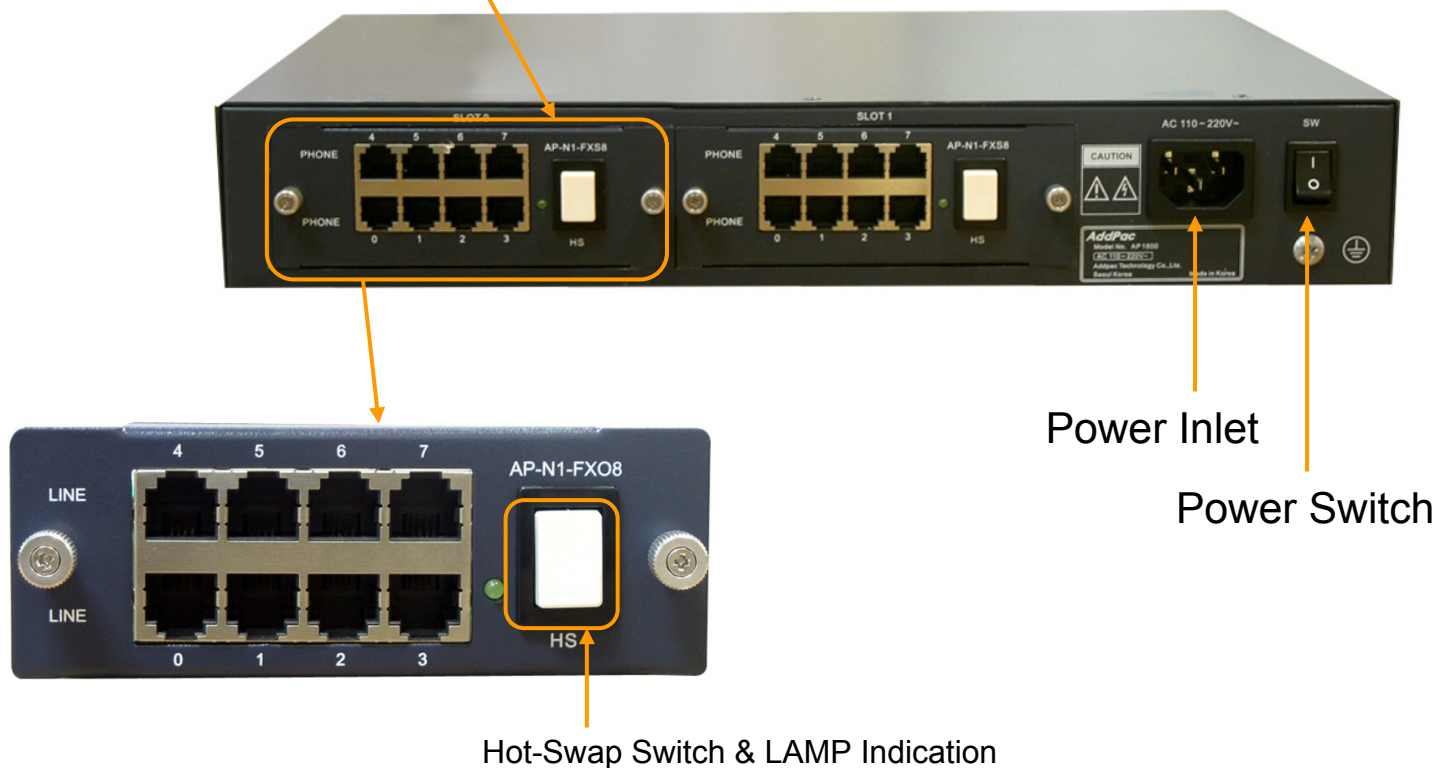
IPNext180 IP-PBX for SMB

RISC
CPU

High-end
DSP

IPNext 180 Back Side

PSTN Interface Module







Hardware Specification

IPNext180 IP-PBX for SMB

RISC
CPU

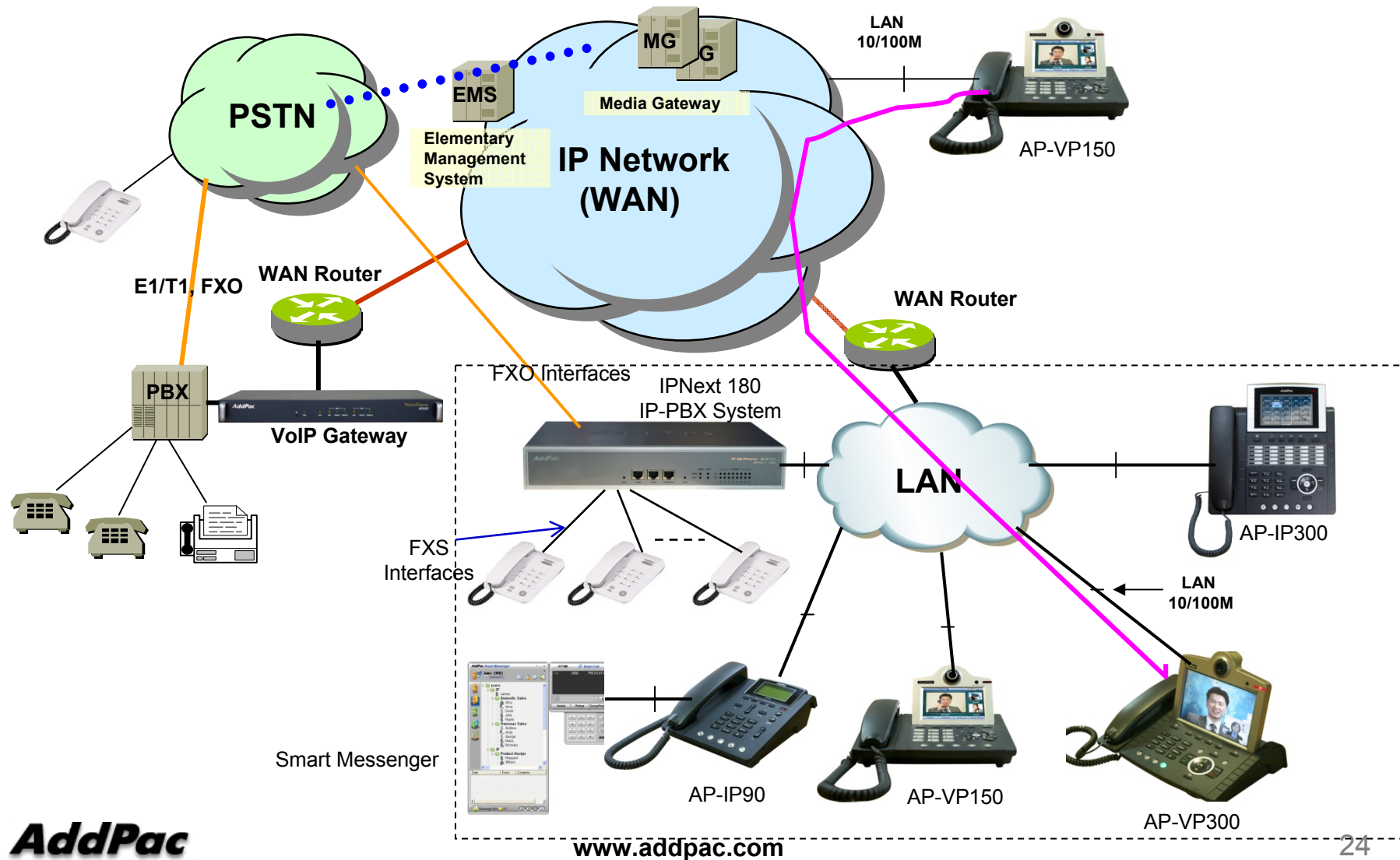
High-end
DSP

- **VoIP Interface Module**

AP-N1-FXS8	 A black 8-port FXS voice processing module with RJ11 ports and a handset icon.	8-Port FXS Voice Processing Module (8 x RJ11)
AP-N1-FXO8	 A black 8-port FXO voice processing module with RJ11 ports and a handset icon.	8-Port FXO Voice Processing Module (8 x RJ11)
AP-N1-FXO4S4	 A black 8-port voice processing module with 4 FXO and 4 FXS ports.	4-Port FXO and 4-Port FXS Voice Processing Module (8 x RJ11)
AP-N1-E1T1	 A black 1-port VoIP digital E1/T1 interface module with an RJ45 port.	1-Port VoIP Digital E1/T1 Interface Module(1xRJ45)

Network Diagram

IPNext180 IP-PBX for SMB





AddPac IP Terminals

AddPac IP Terminals

- AP-VP500 Video Phone
- AP-VP350 MCU Video Phone
- AP-VP300 Video Phone
- AP-VP280 Video Phone
- AP-VP250 Video Phone
- AP-VP230 Video Phone
- AP-VP150 Video Phone
- AP-VP120 Video Phone
- AP-IP300 IP Phone
- AP-IP250 IP Phone
- AP-IP230 IP Phone
- AP-IP160 IP Phone
- AP-IP120 IP Phone
- AP-IP90 IP Phone
- AP-WP100 Wi-Fi Phone
- AP-SMP100 Soft Phone



AP-VP500



AP-VP300



AP-VP150



AP-WP100



AP-VP120



AP-IP300



AP-IP230



AP-IP160

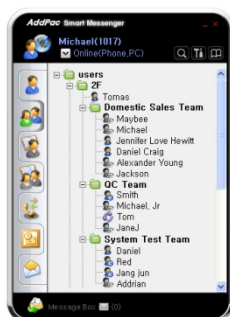


AP-IP120

Smart Communicator

AP-SMP100 Soft Phone (Video/Voice)

- MS-Window based Soft-Phone
- Smart Multimedia (Video/Voice) Soft-Phone
- IP Real-time Audio/Video Broadcasting Terminal Solution
- Built-In Smart Messenger Function
- Up to 30fps with VGA-Resolution(MPEG-4)
- Video Conference Call Support (AddPac External MCU Inter-working)
- Advanced Voice/Video Traffic QoS
- SIP, H.323* Signaling Support
- Support Various Call Signal via AddPac IP-PBX Inter-working



Smart Messenger

- MS-Window based Application
- Support Messenger Service
- Support Various Address Book
- Support User Presence Information
- Support User Search Feature
- Interoperation with Address Book and Smart Phone
- Support Smart Phone Control and Setup
 - Call Control and Forward Setup
- Support Unified Message Box
 - Voice Mail Box
 - Short Message Box



AP-VP300



Smart Messenger



AP-VP280



IPNext230
IP-PBX



Smart Window(1/2)

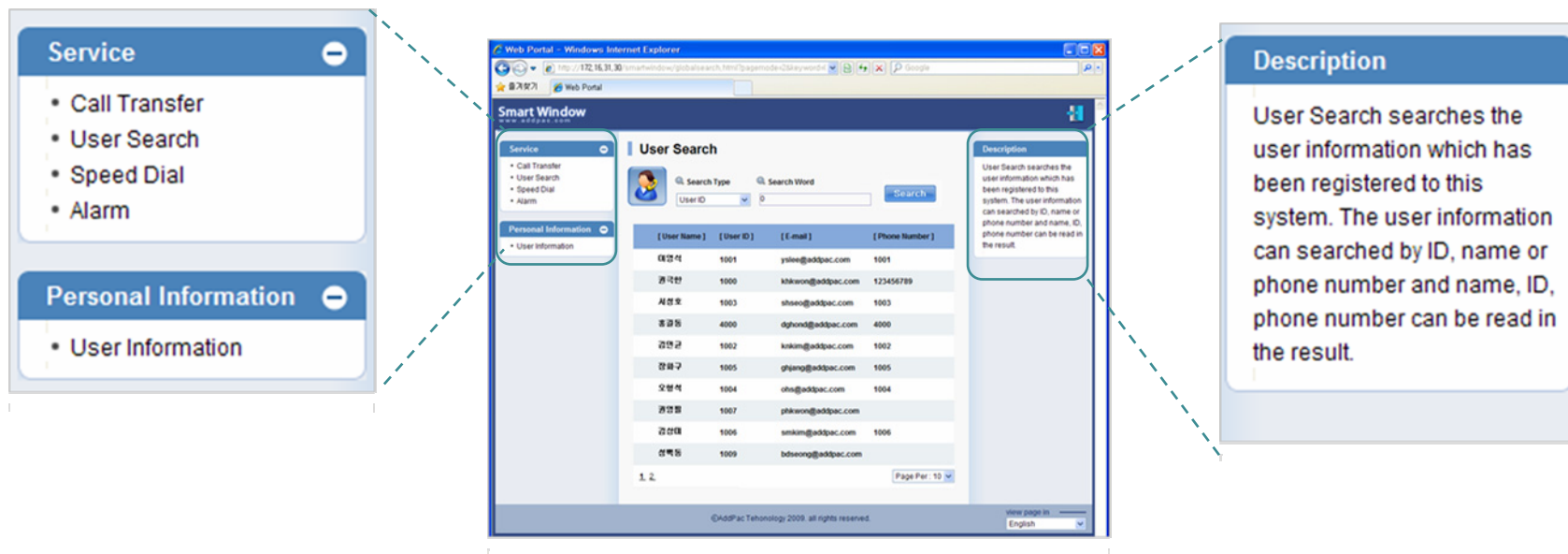
Smart Window is simple web based personal information management program for IP-PBX, Call Manager, etc.

Service Features

- User Information
 - Personal information configuration
- Alarm
 - Alarm event configuration
- User Search
 - User search using search keyword
- Call Forwarding
 - Call forwarding configuration
- Speed Dial
 - Speed dial configuration
- Conference*
 - Configuration of audio, video multiparty conference

Smart Window (2/2)

Main Layout of Smart Window consists of Menu, Contents, Help Message, etc.



Main Menu









Help Message

Main Layout



IP Video Phones for IPNext SOHO

IP Video Phones for IPNext SOHO

	AP-VP500	AP-VP350	AP-VP300N	AP-VP280	AP-VP250	AP-VP230	AP-VP150	AP-VP120
								
LCD Size	12.1 Inch Touch Screen	7Inch Touch Screen	7Inch Touch Screen	7Inch Touch Screen	4.3Inch Touch Screen	5Inch Touch Screen	4.3Inch Touch Screen	4.3Inch
Camera	CCD	CCD	CCD	CMOS	CMOS	CMOS	CCD	CMOS
Video Codec	H.263 MPEG4 H.264	H.263 MPEG4 H.264	H.263 MPEG4 H.264	H.263 MPEG4 H.264	H.263 MPEG4 H.264	H.263 MPEG4 H.264	H.263 MPEG4 H.264	H.263 MPEG4 H.264
Signaling	H.323/SIP	H.323/SIP	H.323/SIP	H.323/SIP	H.323/SIP	H.323/SIP	H.323/SIP	H.323/SIP
Video MCU	N/A	4-Party Video MCU	N/A	N/A	N/A	N/A	N/A	N/A
Voice MCU	3-Party	3-Party	3-Party	3-Party	3-Party	3-Party	3-Party	3-Party
LAN Port	2	2	2	2	2	2	2	2
PoE	N/A	N/A	Support	Support	Support	Support	Support	Support



IP Phones for IPNext SOHO

IP Phones for IPNext SOHO

	AP-IP300	AP-IP250	AP-IP230	AP-IP160	AP-IP120	AP-IP90
						
LCD Size	4.3 Inch Color LCD	4.3 Inch Color LCD	5 Inch Color LCD	4 Text Line Graphic LCD	4 Text Line Graphic LCD	4 Text Line Graphic LCD
Touch Screen	N/A	Support	Support	N/A	N/A	N/A
Speed-Dial Keys	25 Key with Presence LED	Touch Screen based 25 Keys	Touch Screen based 25 Keys	16 Key with Presence LED	12 Key with Presence LED	N/A
Voice Codec	G.711/G.726/G.729/G.723	G.711/G.726/G.729/G.723	G.711/G.726/G.729/G.723	G.711/G.726/G.729/G.723	G.711/G.726/G.729/G.723	G.711/G.726/G.729/G.723
Signaling	H.323/SIP	H.323/SIP	H.323/SIP	H.323/SIP	H.323/SIP	H.323/SIP
3-Party Conversation	Support	Support	Support	Support	Support	Support
LAN Port	2	2	2	2	2	2
PoE(Optional)	Support	Support	Support	Support	Support	Support
FXO(Optional)	Support	Support	Support	Support	Support	Support



Thank you!

AddPac Technology Co., Ltd.
Sales and Marketing

Phone +82.2.568.3848 (KOREA)

FAX +82.2.568.3847 (KOREA)

E-mail : sales@addpac.com