



IPNext 50 IP-PBX

IPNext50 is a next-generation IP-PBX and a new IP telephony solution for all IP environments. IPNext50 inter-works with various IP terminals of AddPac (e.g. AP-VP300, AP-VP250, AP-VP200, AP-VP150, AP-VP120 IP Video Phone, and AP-IP300, AP-IP150, AP-IP100 IP Phone) to provide multimedia IP telephony services as well as the traditional voice-based PBX features. This product is based on the advanced embedded RISC that enables firmware upgrade, and can be equipped with PSTN VoIP interfaces (FXO) depending on options. IPNext50 is suitable for small companies, and inter-works with the VoIP and video products of AddPac Technology to provide a variety of IP application services appropriate for your network. Also, IPNext50 supports H.323 VoIP inter-working as well as SIP protocol for outbound call.

The front panel of IPNext50 IP-PBX supports LED displays of device status. Its rear panel supports FXO VoIP interfaces depending on options, and has two(2) 10/100 Mbps Fast Ethernet ports, the RS-232C console port for Command Line Interface (CLI), and USB host mode interface port. The VoIP gateway interface on the rear panel can be connected to 2-port FXO interface ports, and supports media gateway features as well as IP-PBX features. The USB host mode port allows you to add the features of IP-PBX in addition to supporting the basic features by being connected either to USB devices such as USB Flash Memory, and USB wireless LAN. The call scenarios supported by IPNext50 provide SIP-based basic calls, color ring services, music on hold, blind transfer, call pickup, group call pickup, consult calls, switching calls, consult transfer, call waiting, call waiting notification, call park, call pickup remote, and hunt group. This product is designed to provide application services that require much memory such as voice/video mails using internal memory.

AddPac Technology provides various product families appropriate for your network environment. To meet your needs, AddPac supports VoIP and media gateways, audio/video terminals, audio/video MCU, IP audio/video broadcast, VoD solutions, network DVR solution, audio/video recording solutions, and traffic controller QoS device solutions. In the future all IP-based multimedia telephony environment, various audio/video resources should be shared on an IP network; thus, the integration of the entire solution and that of solutions for each area are very important. AddPac IP-PBX is designed considering the integrated multimedia solution, and can meet your various needs.

Product Highlights

- New 'All-In-One' IP-PBX Concept with Video, Voice, Audio, Data Integrated for Complete Multimedia IP Telephony System
- VoIP Interface for PTSN service
Model A : None
Model B : Two(2) Port FXO Interface
- Upgradeable System Architecture based on Programmable RISC & DSP
- Two(2) 10/100Mbps Fast Ethernet Interface
- RS-232C Console Interface(RJ45) for CLI (Command Line Interface)
- Supports Various AddPac IP end-point terminal : Video Phones, IP Phones
- RTP Proxy Service Features for Private IP and IPv6 Address
- Internal : SIP signaling
Outbound Call : SIP and H.323 Signaling
- Various IP Telephony Call Scenario (Call Transfer, Call Park , Call Pickup etc)
- Intelligent IVR service via Scenario Editor
- Unified Messaging Service (Voice Mail, etc)
- User Presence Service
- Media Service (RingBack, Music on Hold, Announcement)
- 3-Party Call Support via AddPac IP Phone
- Remote Firmware Upgrade Through FTP & TFTP Protocol
- Web based Smart Multimedia Manager
- Essential Scalability Features such as DHCP Server & Relay, NAT/PAT, IEEE Transparent Bridging, and Debugging/Diagnostics, etc.
- Fault Tolerant and Scalability Architecture

IPNext 50 Application

- IP Telephony System Integration for Small Office and Home Network
- IP based Call Center System
- IVR system

Hardware Specification

- RISC PowerPC Microprocessor (CPU) + Voice DSP
- Memory
 - Boot memory 512Kbyte Flash Memory
 - Main memory 128Mbyte SDRAM
 - Flash Memory 512Mbyte
- Ethernet Interface
 - 10/100Mbps 2-Port Ethernet (RJ-45)
- Console Port
 - RS-232C 1-Port Console (RJ-45)
- VoIP Interface
 - Model A : None
 - Model B : 2-Port FXO Interface
- USB 1.1 Host Mode Interface for USB Flash, USB HDD Memory
- Power ON/OFF Switch

Power & Operational environment

- Power External Power Adaptor
- Power Consumption 15Watt
- Operation Temperature 0°C ~ +45°C
- Storage Temperature -40°C ~ +85°C
- Humidity 5%~95%

Dimensions

- Dimension (H x W x D) : 38 x 182 x 182 (mm, H x W x D)
- Weight : 0.46 Kg

Voice over IP Service

- H.323, SIP VoIP Signaling Protocol
- VAD, DTMF, CNG, G.168
- Voice Codec : G.723.1, G.729, G.726, G.711,
- Various VoIP Features
- Interoperable with Diverse VoIP Gateways
- Interoperable with Diverse VoIP Gatekeeper, SIP Proxy Server

IP Telephony Service

- Internal Call : SIP signaling
- Outbound Call : SIP and H.323 Signaling
- Speed Dial, Phone Book
- Basic Call Scenario, Coloring Service Music on Hold, Blind Transfer, Call Pickup
- Consult Call, Switching Call, Consult Transfer
- Call Waiting, Call Waiting Notify
- Call Park, Call Pickup Remote, Hunt Group
- Web based Smart Multimedia Manager Program
- MS-Windows based Smart Messenger Support

RTP Proxy Service

- Private IP Address Support
- IPv6 Address Support
- Public and Private IP Address Inter-working

IVR Service

- IVR Scenario Editor Support
- IVR Scenario Simulation
- IVR Scenario Run-Time Debugging

User Presence Service

- Real-time User Presence Service
- Interworking with Smart Messenger and Presence IP Terminal

Media Service

- Ring Back Tone, Announcement, Music on Hold
- Scheduled based Media Service

Unified Messaging Service

- IVR Scenario for Voice Mail Recording and Retrieval
- Voice Mail Notification via E-Mail
- Quota Management for each user

Network Management

- Standard SNMP Agent (MIB v2) Support
- Console, Telnet, Web Based Management
- Remote Download via FTP/TFTP

Traffic QoS Control

- Traffic QoS Control Feature for Services
- Voice, Data, Video Prioritizing Control
- Various QoS Algorithm Support

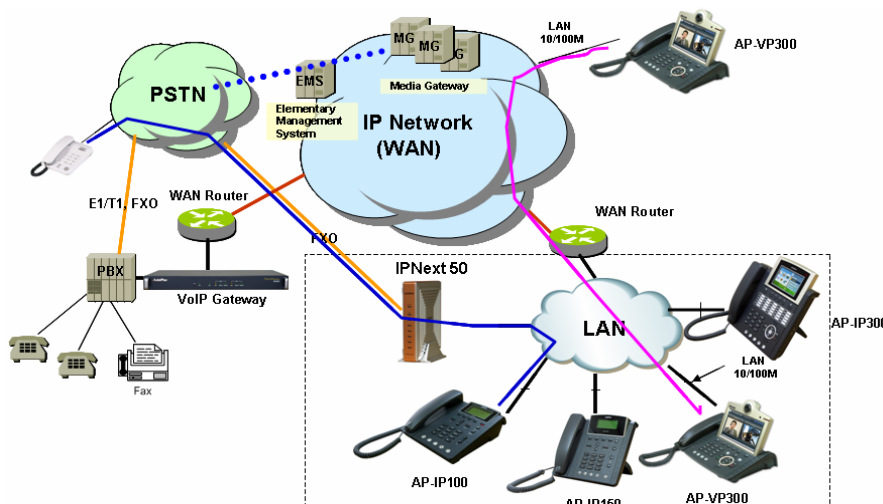
Security Feature

- IP Packet Filtering / Access List
- Access Control and Data Protections
- Enable/Disable for Specific Protocols
- Multi-level User Account Management
- Auto-disconnect for Telnet/Console Sessions
- PPP User Authentication Support
- Password Authentication Protocol (PAP)
- Challenge Handshake Authentication Protocol (CHAP)

Other Feature

- DHCP Server & Relay Functions
- DDNS, NTP (Network Time Protocol)

IPNext 50 Network Diagram



Ordering Information

- IPNext 50 Next Generation IP-PBX
 - Two(2) Fast Ethernet Port
 - One(1) RS-232C Console Port
 - RISC CPU + Voice DSP,
 - 512MB Flash, 128 MB SDRAM
 - USB 1.1. Host Mode Interface
 - Power ON/OFF Switch
 - APOS v8.xx Manual
- CAB-LAN Ethernet Cable
- CAB-CON RS-232C Console Cable
- PSTN Interface Option :
 - IPNext50-Model A : None
 - IPNext100-Model B : 2-Port FXO Interface