



IPNext50™

SOHO IP-PBX

High-performance Next Generation IP-PBX Solution

New Models for GSM
Interface Extension

Preliminary Product Overview

(Without notice, following described technical spec. & Body Color (CASE) can be changed)



IPNext50 GSM

AddPac

AddPac Technology

2010, Sales and Marketing

Contents

- IPNext50 GSM Product Overview
- IPNext50 Model GA,GB,GD H/W Specification
- IPNext50 Model GA,GB,GD Network Diagram



IPNext50 GB

www.addpac.com

IPNext50 GSM Product Overview

- Small, Powerful IP-PBX for SOHO
- Smart Management and User Friendly Features
- Fault Tolerant and Scalability Architecture
- RTP Proxy Service
- IVR Service
- User Presence Service
- Media Service : Ring back Tone, Music on Hold, Announcement, etc
- Unified Messaging Service : Voice Mail, etc
- Firmware Upgradeable Architecture
- Two(2) Fast Ethernet Interface
- Two(2) GSM Interface Ports
- Two(2) SIM Card Slots
- Option : Up to Two(2) FXS VoIP Interface for PSTN
- One(1) RS-232C Port for CLI

IPNext50 New Model H/W Spec.

- IPNext50 Embedded Platform
- Voice Interface
 - GSM 2ch (**Model GA**) : New Model
 - GSM 2ch + FXS 2ch (**Model GB**) : New Model
 - GSM 4ch (**Model GD**) : New Model
- RISC Microprocessor Computing Power
- Audio Codec
 - G.711, G.726, G.729, G.723.1
- Main Chassis
 - One(1) RS-232C Console (RJ45)
 - Two(2) Fast Ethernet Ports
 - External Power Adaptor

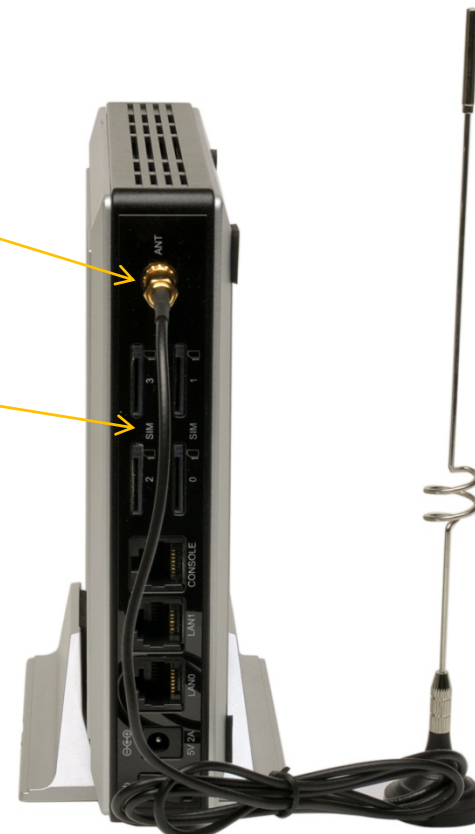
IPNext50 New Model H/W Spec.



IPNext50 GB




4Ch Antenna
Combiner

4 sim slots

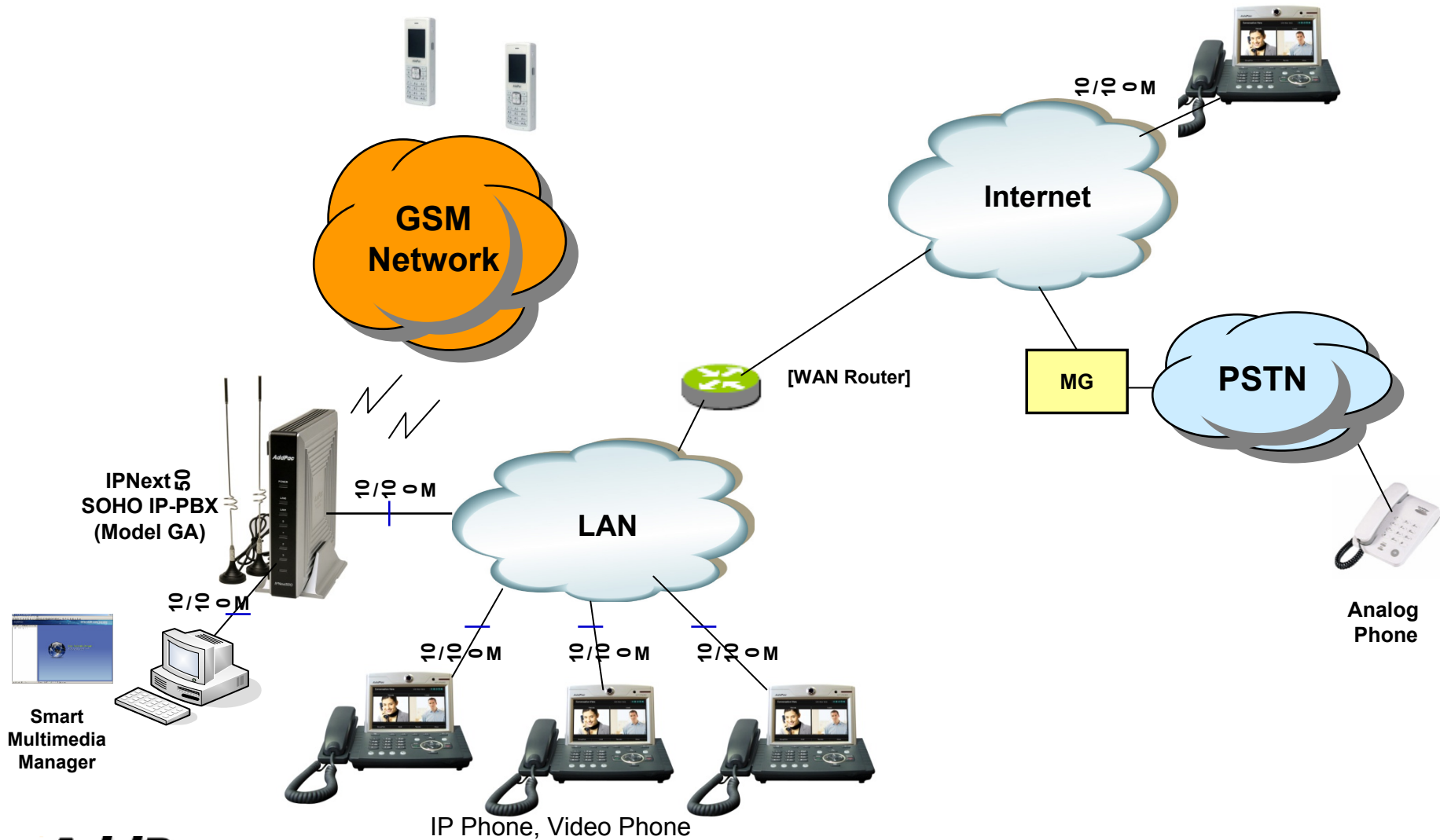


IPNext50 GD

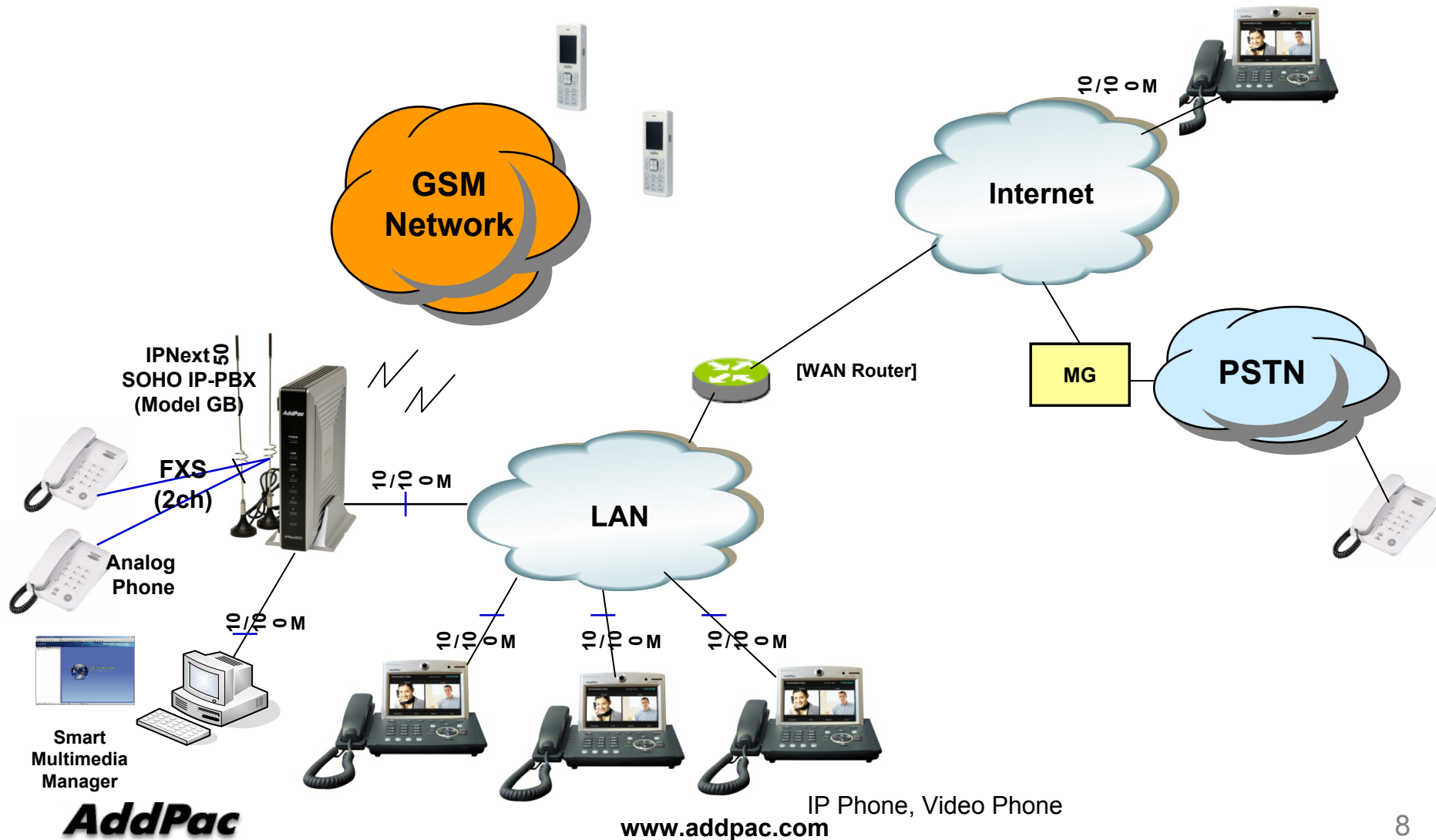
IPNext50 GSM IP-PBX Comparison Table

Product		IPNext50 GD	IPNext50 GB	IPNext50 GA
Service Features				
Registration User Number		30	30	30
Concurrent Call User		15	15	15
IPv4/IPv6 Dual Stack Support		Support	Support	Support
VoIP Signaling	Internal	SIP	SIP	SIP
	External	H.323/SIP	H.323/SIP	H.323/SIP
Powerful IVR, UMS, Media Service, User Presence Service		Support	Support	Support
RTP Proxy Service (IPv6, Private IP)		Support	Support	Support
LAN Port		2	2	2
GSM Interface		4 Channel	2 Channel	2 Channel
FXS Interface		N/A	2 Port	N/A

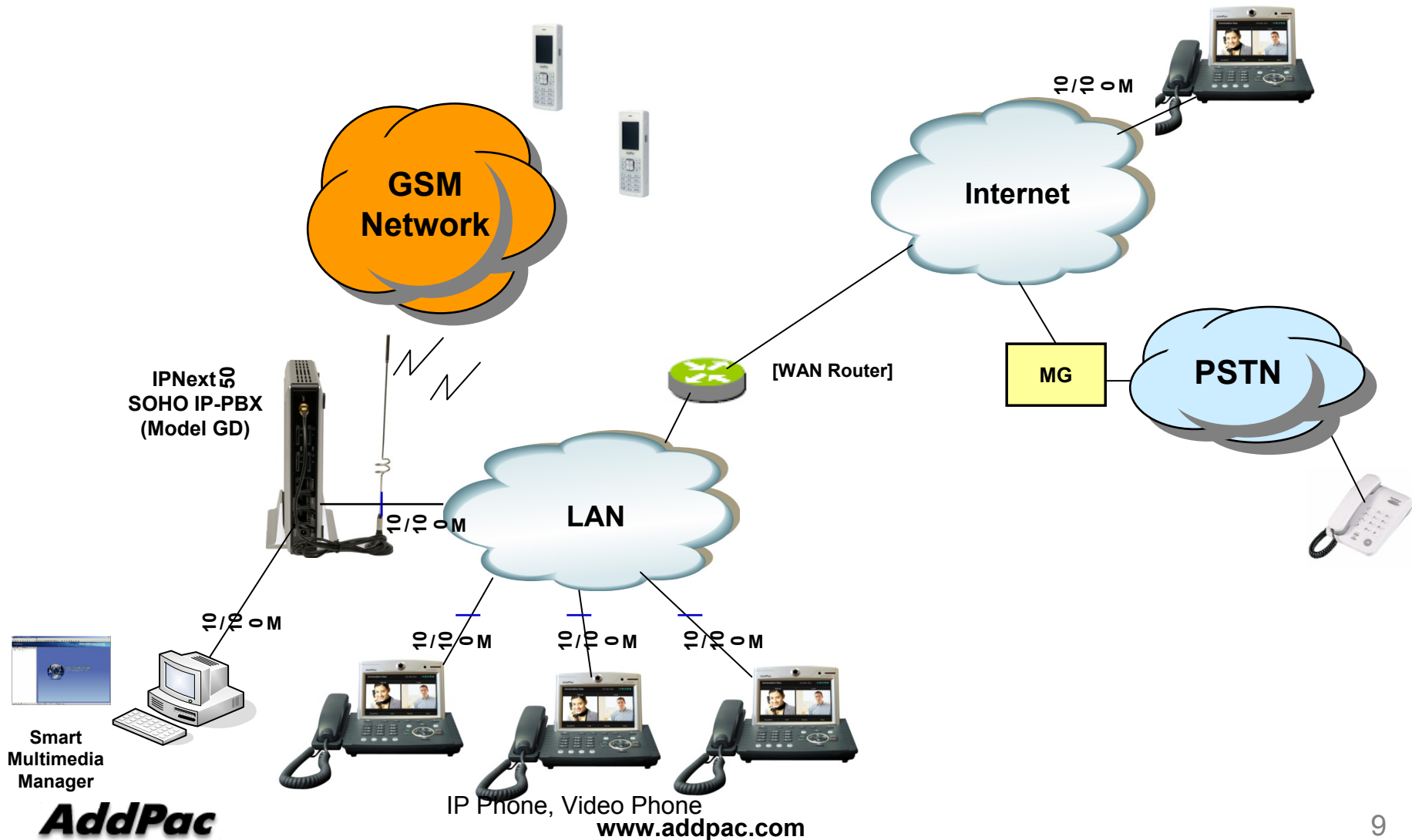
IPNext50(Model GA) Network Diagram



IPNext50(Model GB) Network Diagram



IPNext50(Model GD) Network Diagram





Thank you!

AddPac Technology Co., Ltd.
Sales and Marketing

Phone +82.2.568.3848 (KOREA)

FAX +82.2.568.3847 (KOREA)

E-mail sales@addpac.com