

WiFi SOHO IPT Solution



AddPac

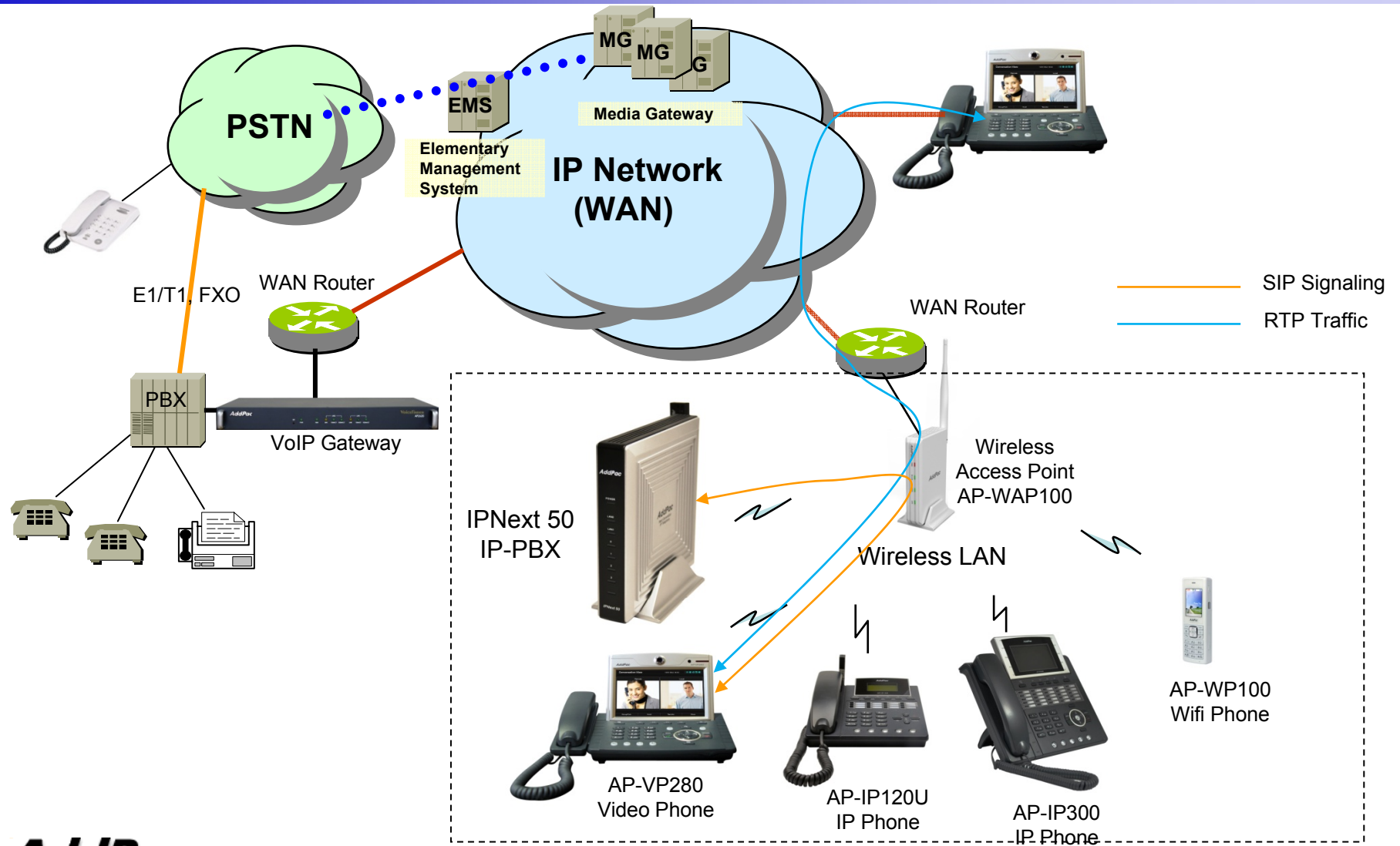
AddPac Technology

2010, Sales and Marketing

Contents

- WiFi SOHO IPT Service Diagram
- WiFi SOHO IPT Solution
 - AP-VP280 Video Phone (USB based WiFi)
 - AP-IP300 IP Phone (USB based WiFi)
 - AP-IP120U IP Phone (USB based WiFi)
 - AP-WP100 WiFi Phone
 - IPNext50 IP-PBX (USB based WiFi)
 - AP-SAP100 Smart Phone Appl.(Android)
 - AP-SIP100 Smart iPhone Appl. (Iphone)
- USB WiFi Features

WiFi SOHO IPT Service Diagram





WiFi SOHO IPT Solution



Video Phones (USB based WiFi)

WiFi SOHO IPT Solution

AddPac Video Phone Series

USB based WiFi Application Enabled
Video Phones

- AP-VP500 Video Phone
- AP-VP350 MCU Video Phone
- AP-VP300 Video Phone
- AP-VP280 Video Phone
- AP-VP250 Video Phone
- AP-VP230 Video Phone
- AP-VP150 Video Phone
- AP-VP120 Video Phone



AP-VP500



AP-VP300N



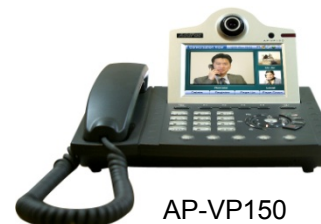
AP-VP280



AP-VP280



AP-VP250



AP-VP150



AP-VP120

AddPac

www.addpac.com



AP-VP280 Video Phone (USB based WiFi)

WiFi SOHO IPT Solution

AP-VP280 Video Phone (Example)

Main Features

- 7 Inch LCD Display, Touch Screen, Remote Controller
- External Video Interface
 - Composite (RCA) Video In/Out, S-Video Out
 - Audio (RCA) In/Out
- High-performance Video Codec Support
 - H.263, MPEG-4, JPEG, and H.264
- High-performance Audio Codec Support
 - G.711,G.729,G.723.1 ,etc
- Powerful Image Resolution Support
 - QCIF(176x144), CIF(352x288), QVGA(320x240), and VGA(640x480)
- Up to 30fps at 1Mbps with VGA-Resolution(MPEG-4)
- Video Conference Call Support (AddPac MCU Inter-working)
- SIP, H.323 Signaling Support
- Rate Control for Video Traffic QoS
 - Ensuring Optimized Quality, Frame Rate with Limited Bandwidth
- High-end Error Resilient Against Various Packet Error



WiFi SOHO IPT Solution

AP-VP280 Video Phone (Example)

Hardware Specification

- RISC Microprocessor Computing Power
- High-end Programmable DSP Hardware Architecture
- Powerful Video Interface
 - RCA Video Input/Output, S-Video Output
- High quality Audio and Voice Interface
 - Stereo Audio Input & Output Connector
- Network Interface
 - Two(2) 10/100Mbps Fast Ethernet
 - One(1) RS-232C Console
 - One(1) USB 1.0 Interface
- PSTN Interface
 - One(1) FXO(RJ11) interface



WiFi SOHO IPT Solution

AP-VP280 Video Phone (Example)

Hardware Specification



USB WiFi LAN



Two(2) 10/100Mbps
Ethernet Port

RS232C Console Port



AP-IP300 IP Phone (USB based WiFi)

WiFi SOHO IPT Solution

AP-IP300 Premium IP Phone

Main Features

- High Performance IP Phone Solution
- 4.3 Color LCD Display, 25 Speed-Dial KEYS, Menu KEY, Function KEY
- Head Set, High Quality Speaker Phone
- High Quality Voice Codec G.729/G.723/G.711, etc
- SIP, H.323 Signaling Support
- Broadband IP Networking Service using Dual Ethernet Port
- IP based Audio Broadcasting Solution
- High-performance Audio, and Voice Service
- Firmware Upgradeable Architecture
- VoIP Solution with Outstanding Network Service Capability
- Audio Privacy Protection
- High-end Error Resilient Against Various Packet Error

WiFi SOHO IPT Solution

AP-IP300 Premium IP Phone

Hardware Specification

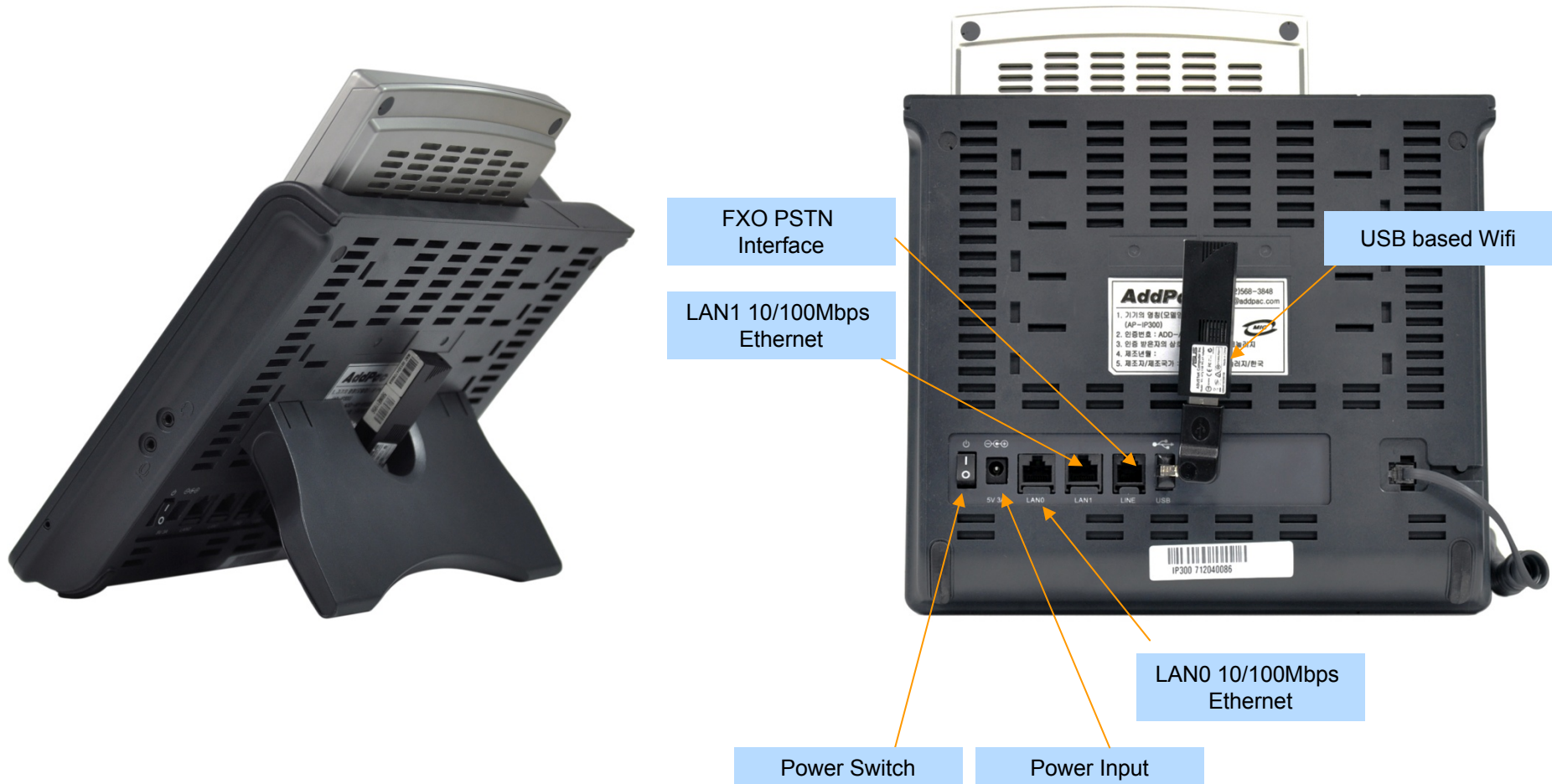
- RISC+DSP Microprocessor Computing Power (Dual Processor Architecture)
- High Quality 4.3 Inch Color LCD Panel
- 25 Speed Dial Key & User Presence Indication LED
- Optional PSTN Backup Interface
 - FXO Interface
- High quality Audio and Voice Interface
 - Stereo Audio Input Connector
 - Stereo Audio Output Connector
- Network Interface
 - Two(2) 10/100Mbps Fast Ethernet
- USB Host Mode Interface
 - USB Wifi, etc
- Power Supply
 - Power over Ethernet
 - External Power Adaptor (5V, 3A)



WiFi SOHO IPT Solution

AP-IP300 Premium IP Phone

Hardware Specification





AP-IP120U IP Phone (USB based WiFi)

WiFi SOHO IPT Solution

AP-IP120U IP Phone

Main Features

- High Performance IP Phone Solution
- LCD Display, 12 Speed-Dial KEYS, Menu KEY, Function KEY
- Head Set, High Quality Speaker Phone
- High Quality Voice Codec G.729/G.723/G.711, etc
- SIP, H.323 Signaling Support
- Broadband IP Networking Service using Dual Ethernet Port
- IP based Audio Broadcasting Solution
- High-performance Audio, and Voice Service
- Firmware Upgradeable Architecture
- VoIP Solution with Outstanding Network Service Capability
- Audio Privacy Protection
- High-end Error Resilient Against Various Packet Error

WiFi SOHO IPT Solution

AP-IP120U IP Phone

Hardware Specification

- RISC+DSP Microprocessor Computing Power (Dual Processor Architecture)
- Optional PSTN Backup (FXO) Interface
- Optional PoE (Power over Ethernet)
- High quality Audio and Voice Interface
 - Stereo Audio Input Connector
 - Stereo Audio Output Connector
- Network Interface
 - Two(2) 10/100Mbps Fast Ethernet
- LCD Window : Graphic LCD (4 Line Text)
- 12 Speed-Dial Key with Presence Indication LAMP
- USB Host Mode Interface
 - USB Wifi, etc
- Power Supply
 - External Power Adaptor (5V, 2A)



WiFi SOHO IPT Solution

AP-IP120U IP Phone

Hardware Specification





AP-WP100 WiFi Phone

WiFi SOHO IPT Solution

AP-WP100 WiFi IP Phone

Main Features

- High Performance WiFi Phone Solution
- 2 Inch Color TFT LCD Display
- High Quality Speaker Phone
- External Audio In/Out Port for Headset
- Wireless LAN Connection, IEEE 802.11b/g up to 54Mbps
- WPA(Wifi Protected Access) Support, 802.11i Security Standard
- SIP Signaling Support
- IP based Audio Broadcasting Solution
- High-performance Audio, and Voice Service
- Firmware Upgradeable Architecture
- VoIP Solution with Outstanding Network Service Capability
- High-end Error Resilient Against Various Packet Error



WiFi SOHO IPT Solution

AP-WP100 WiFi IP Phone

Hardware Specification (1/2)

- RISC processor(ARM920T CPU core)
- Memory
 - NAND FLASH : 32Mbyte
 - mSDRAM : 32MByte
- Wireless
 - IEEE802.11b/g Support
 - Operating Frequency : 2.4GHz
 - 802.11g: 54, 48, 36, 24, 18, 12, 9, 6Mbps, auto rate
 - 802.11b: 11, 5.5, 2, 1Mbps, auto rate
 - Operating Channels :IEEE Channels 1–14
- Audio Interface
 - 2 x MIC-IN, Receiver OUT, Speaker OUT , Head Phone OUT
 - Interface : I2S (Chip Set : CS42L52)
- Display
 - LCD : 220 X 176 260K Color 2" TFT LCD (16bit data bus)



WiFi SOHO IPT Solution

AP-WP100 WiFi IP Phone

Hardware Specification (2/2)

- IO PORT
 - Ear-phone jack 2.5mm, 4 Contact
 - 24PIN Data Connector
 - USB Device, RS232 TTL, Battery Charge 4.2V or 5V(USB)
 - 3PIN Battery Charge Connector(4.2V)
- Other
 - 23 Keys (Front) + 4 Keys (Side) , 8 Back Light LEDs
 - Vibration Motor
 - Battery : 3.7V, 1330mAh Lithium Polymer Battery (Inner Pack Type)

WiFi SOHO IPT Solution

AP-WP100 WiFi IP Phone

Hardware Specification





IPNext50 SOHO IP-PBX (USB based WiFi)

WiFi SOHO IPT Solution

IPNext50 SOHO IP-PBX

Main Features

- SIP Application Server, Proxy, Registrar and Location Server
- Multiple ITSP Trunk with SIP & H.323 Accounts Support
- High Performance RISC & Programmable DSP Architecture
- Two(2) 10/100Mbps Fast Ethernet (IP Share ,etc)
- One(1) USB Port for USB Memory and Wireless LAN
- Up to Four(4) PSTN FXO VoIP Interface
- High Performance LAN-to-LAN Routing Capability
- VoIP Gateway : G.711/G.726/G.723/G.729, T.38 Fax , VAD, etc
- Powerful Network Protocols (PPPoE, DHCP, Static Routing, etc)
- IPv4/IPv6 Dual Stack
- RTP Proxy Function Embedded for Private IP and IPv6 Address Interworking
- Presence Service Features for Smart Multimedia Messenger and Smart IP Phone
- IVR Scenario Editor, Voice Mail, Third Party Conference (G.711)
- Firmware Upgradeable Architecture
- Smart Multimedia Manager for IP-PBX Management
- Smart Messenger Service for UC
- Advanced Voice QoS Mechanism
- Small, Light and Compact Design
- Power Switch for Stability and Status LEDs

WiFi SOHO IPT Solution

IPNext50 SOHO IP-PBX

Hardware Specification

- RISC Microprocessor Computing Power
- + High End Programmable DSP
- VoIP Gateway Interface
 - IPNext50 Model A: Basic Configuration
 - IPNext50 Model B: Two(2) FXO Port
 - IPNext50 Model C :Four(4) FXO Port
- Network Interface
 - Two(2) 10/100Mbps Fast Ethernet (RJ45)
- USB Interface
 - One(1) USB Host Mode Interface for USB Memory and Wireless LAN
- Power Supply
 - External Power Adaptor
- Power On/Off Switch
- Power LED, LAN LEDs, FXO Port LEDs



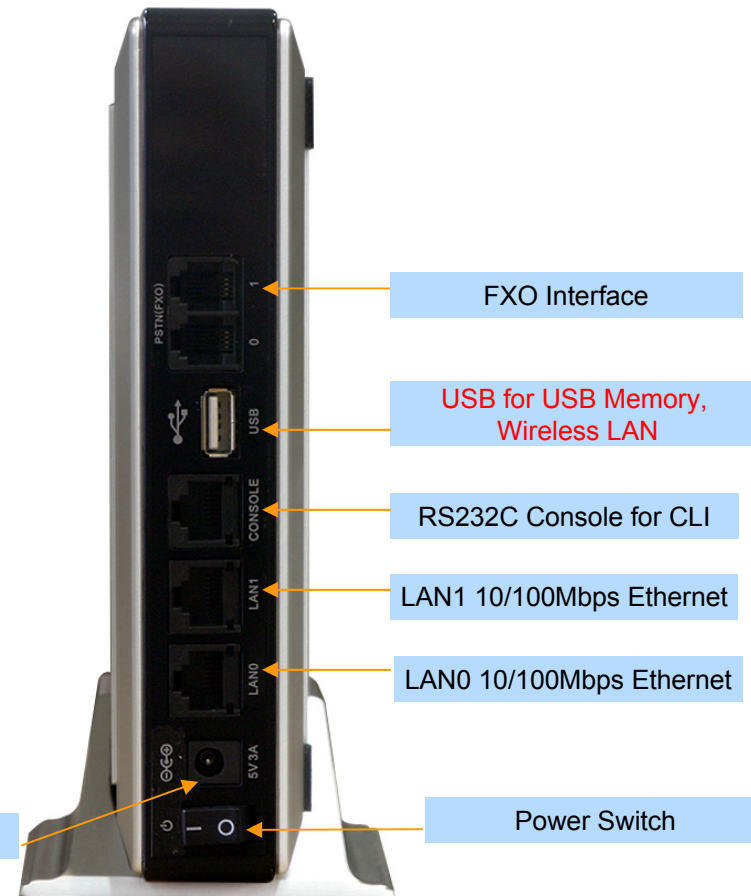
WiFi SOHO IPT Solution

IPNext50 SOHO IP-PBX

Hardware Specification



External Power Interface





USB WiFi Features

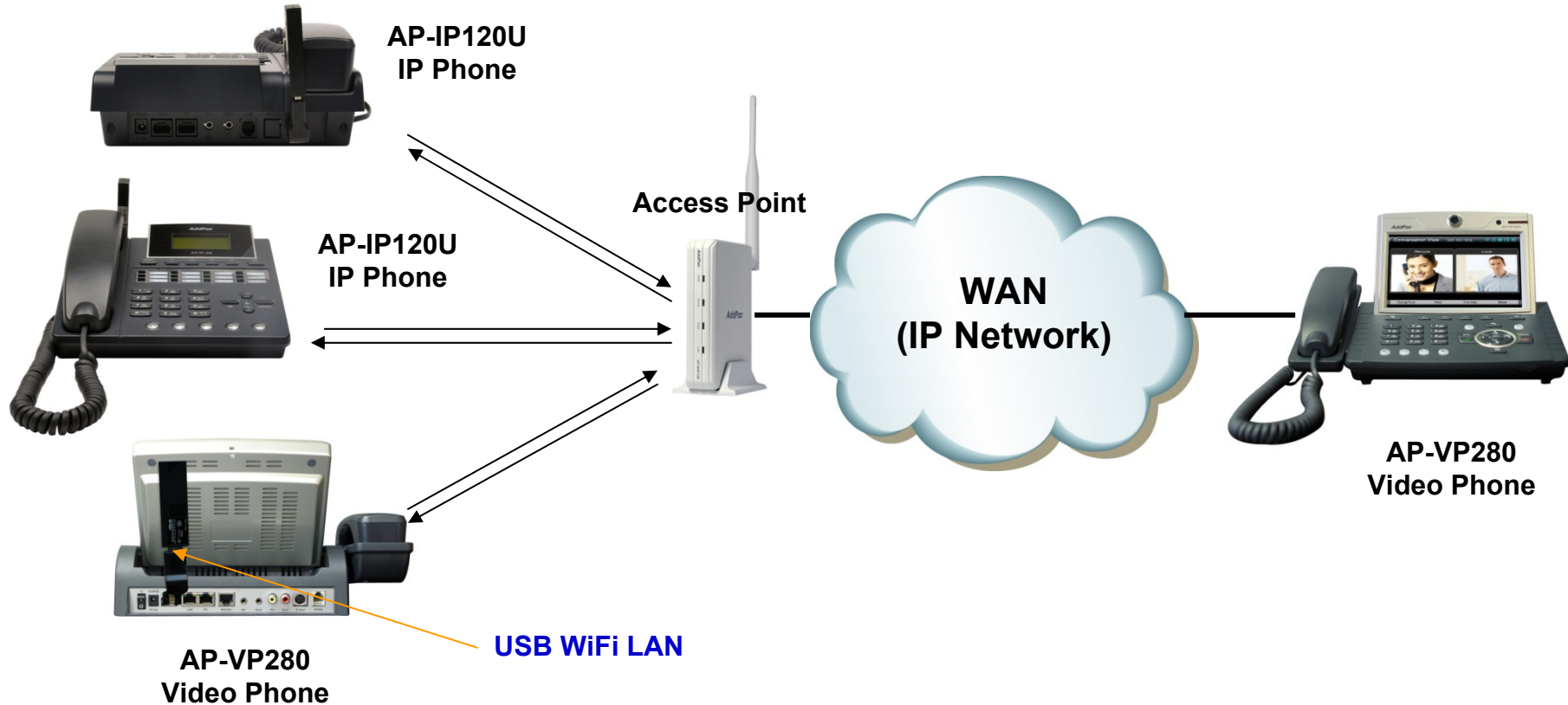
Contents

- Wireless LAN Specification
- BSS/IBSS Network Diagram
- Performance Estimation

Wireless LAN Specification

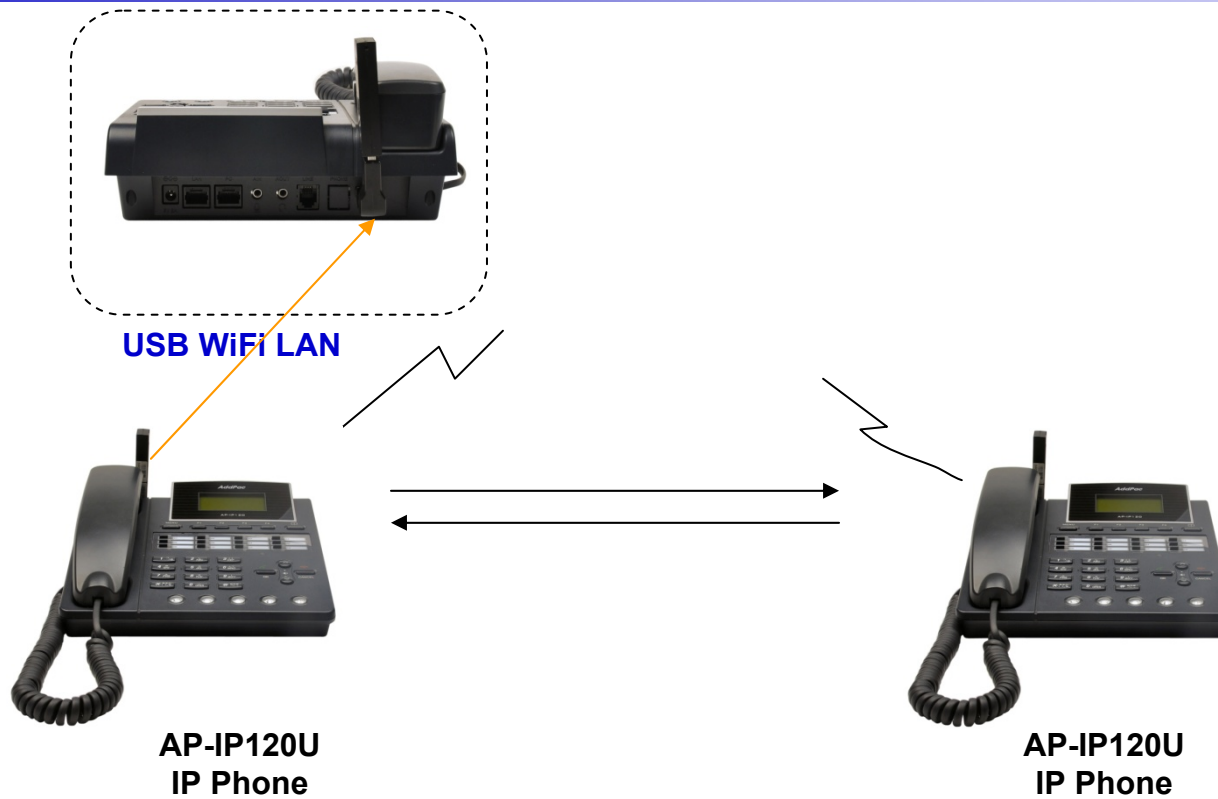
- **IEEE 802.11b/g Support**
 - BSS(Base Service Set. Infra-structure)
 - IBSS(Independent BSS. ad-hoc)
 - Authentication/Security Mode
 - Current : Open/None, Open/WEP(40B/104B)
 - Developing : WPAPSK/AES
- **Chipset Support**
 - Chipset : ralinktech RT2570 USB
 - USB Devices : ASUS WL-167g, D-Link DWL-G122

BSS Network Diagram



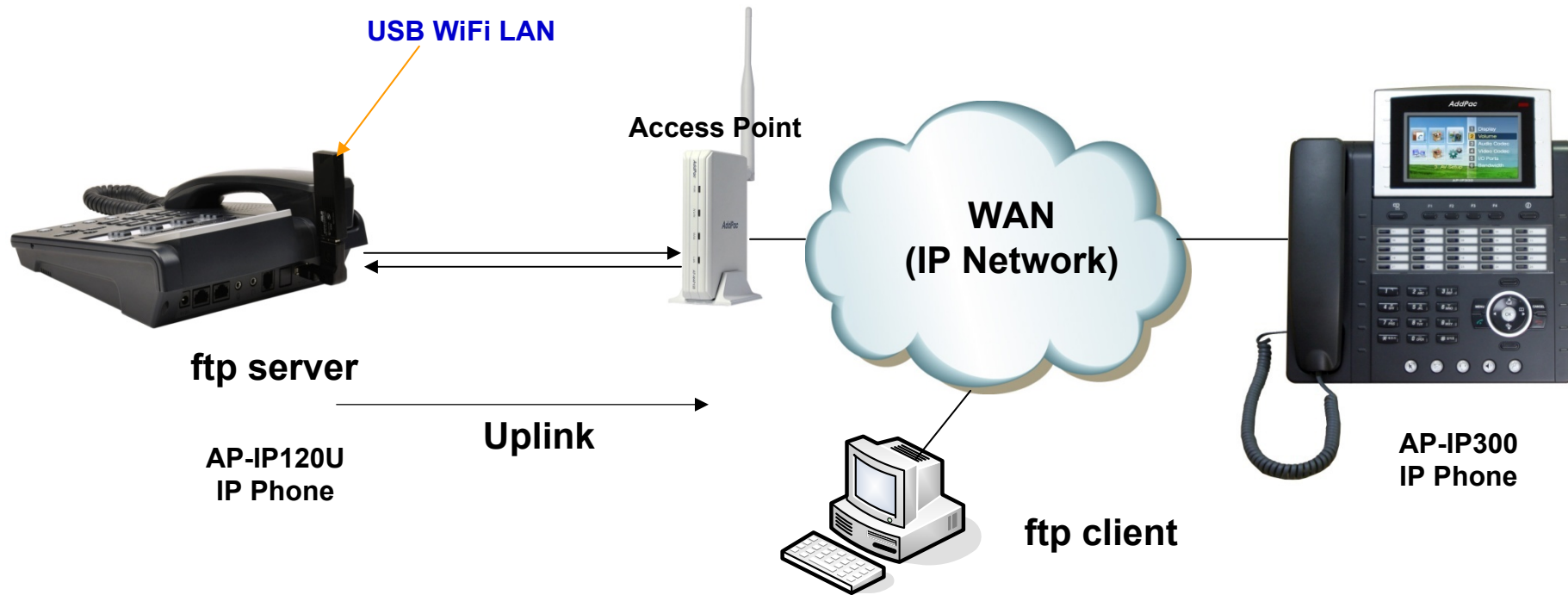
BSS (Base Station Set) Configuration

IBSS Network Diagram



IBSS (Independent Base Station Set) Configuration

Performance Estimation



Video Communication : bidirectional 2Mbps

Data throughput : ftp get 330 ~ 450kB/s, put 330kB/s



Thank you!

AddPac Technology Co., Ltd.
Sales and Marketing

Phone +82.2.568.3848 (KOREA)

FAX +82.2.568.3847 (KOREA)

E-mail sales@addpac.com