



Smart Messenger

# AP-VP280™

## BcN IP Video Phone

High Performance Broadband Convergence Network  
IP Video Phone Solution



AP-VP280



IPNext50

## User Presence Features

**AddPac**

AddPac Technology

2008, Sales and Marketing

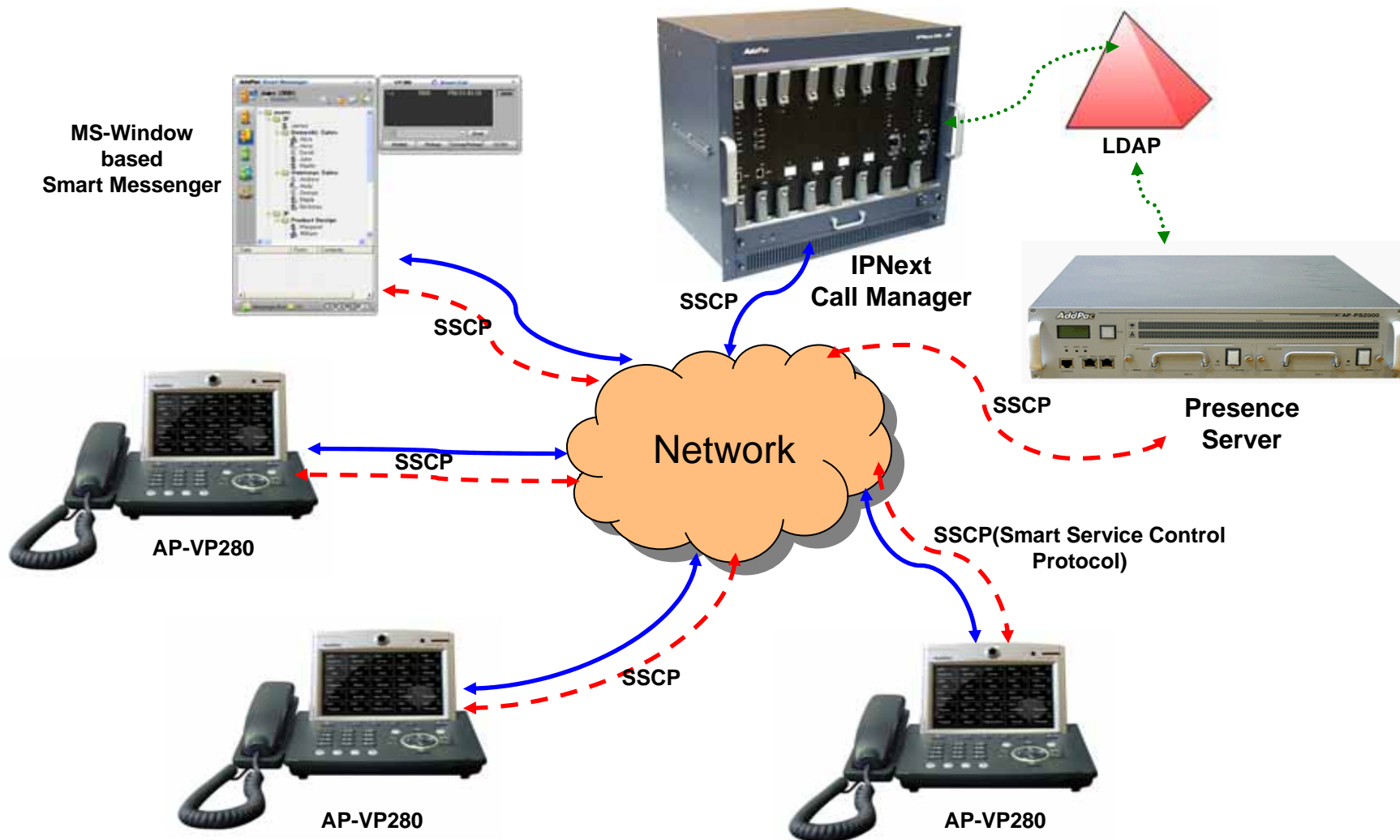
# Contents

- Overview
- IP Telephony Network Diagram for User Presence Service
- AP-VP280 User Presence Feature
- AP-VP280 User Presence UI
  - Presence Server Input
  - Presence Service Enable
    - Presence Server Login Success
  - Speed Button Profile Select
    - Speed Button Profile Update Notification
  - Speed Button Map View
    - Indicate User Presence Information on Touch Screen LCD
  - Speed Button List View
  - Speed Button Modify

# Overview

- Used to support User Presence Service and Speed Dial
- Inter-operate Presence Server and Call Manager
  - Support User Presence Information
  - Support two or more Speed Button Profile List
- Support Speed Button Interface
  - Speed dialing service
  - Support User(Phone Number) Presence Information on LCD Screen
  - Editable global speed button profile, and Save in Phone

# IP Telephony Network Diagram for User Presence Service



# AP-VP280 User Presence Feature

- **AP-VP280 Supports**
  - User Login and Logout Feature
  - Presence Server Setup
    - Maximum 5 Presence Server Setup
    - Enable/Disable Connection to Presence Server
  - Select Profile
    - Get Speed Button Profile (Global Profile) from Presence Server
    - Select Speed Button Profile in profile list received from Presence Server
    - With Speed Button Profile, user can edit as you want (change to Private Profile)

# AP-VP280 User Presence Feature (cont.)

- Phone Book Feature
  - Speed Button view in Map type and List type
  - Speed Button Delete, Modify
  - Represent User Presence Information on OSD in real-time
  - AP-VP300 Phone Book itself Supports
    - Group Create, Modify, Delete
    - Contact Add, Delete, Modify
    - Search Contact by number, name, speed dial number
  
- Speed Button LED
  - Get User Presence Information in real-time
  - Connect Call using one Button (no need to press all dial digits)

# AP-VP280 User Presence UI



# Presence Server Input

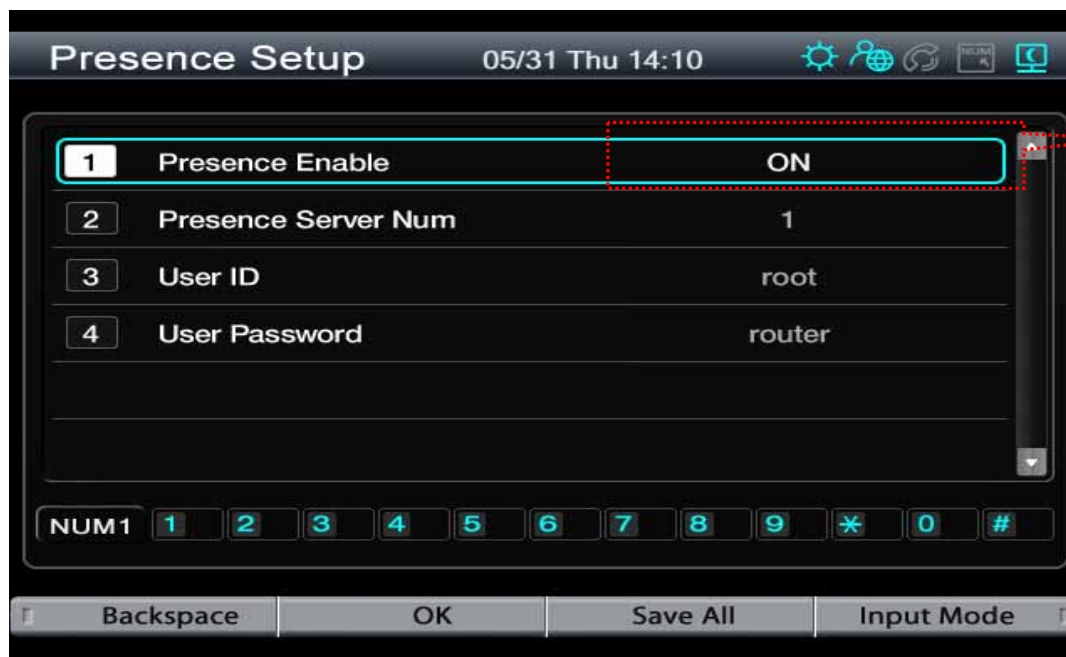
The screenshot shows a terminal window titled "Presence Server" with the date and time "05/31 Thu 14:10". The window contains a list of configuration items for three presence servers. The first item, "Presence Server 1", is selected and its IP address "171.17" is being entered. The second item is "Server1 Port" with the value "5051". The third item is "Presence Server 2" with the value "172.17.252.2". The fourth item is "Server2 Port" with the value "5051". The fifth item is "Presence Server 3" and the sixth is "Server3 Port". Below the list is a numeric keypad with buttons for "NUM1", "1", "2", "3", "4", "5", "6", "7", "8", "9", "\*", "0", and "#". At the bottom of the terminal are buttons for "Backspace", "OK", "Save All", and "Input Mode".

Item	Value
1 Presence Server 1	171.17
2 Server1 Port	5051
3 Presence Server 2	172.17.252.2
4 Server2 Port	5051
5 Presence Server 3	
6 Server3 Port	

- Presence Server
  - Input Presence Server IP address and Port number to Connect, maximum 5 server info enable
  - Support IPv4, IPv6 address
  - Terminal try to connect to the first server, if it fails, terminal try to connect to next Presence Server



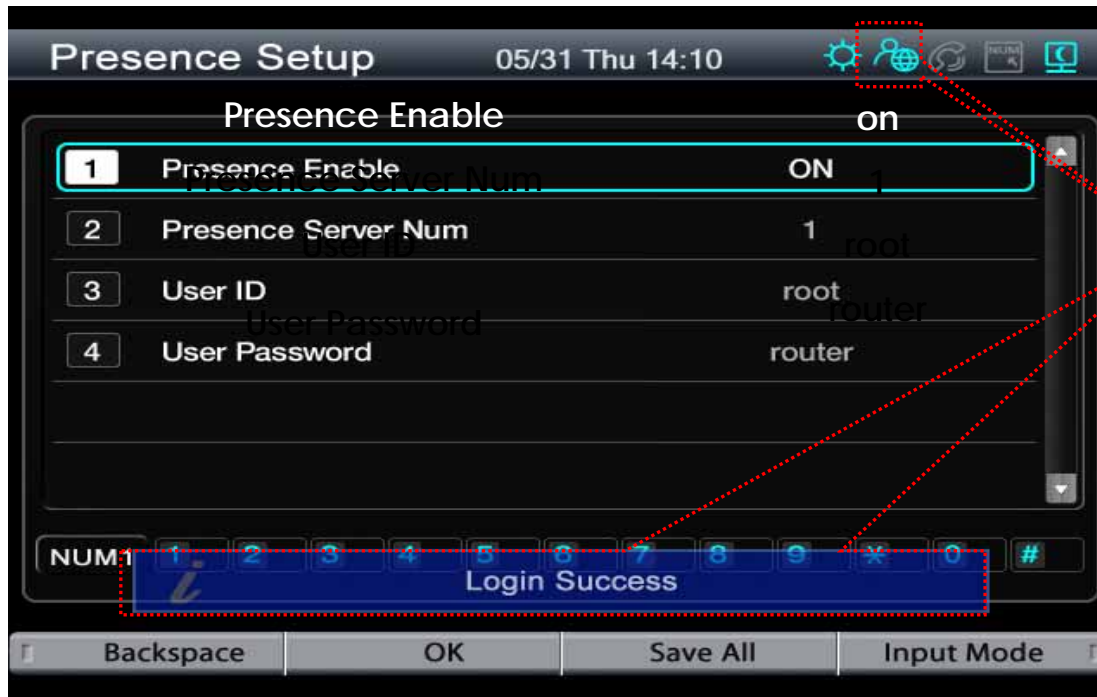
# Presence Service Enable



Toggle using left/right arrow key

- Presence Setup
  - Presence Function enable/disable
  - Presence Server Num : the number of Presence Server in Presence Server List (This Can't be editable by user)
  - User Id, Password for Presence Server Login

# Presence Server Login Success



Connect to  
Presence Server

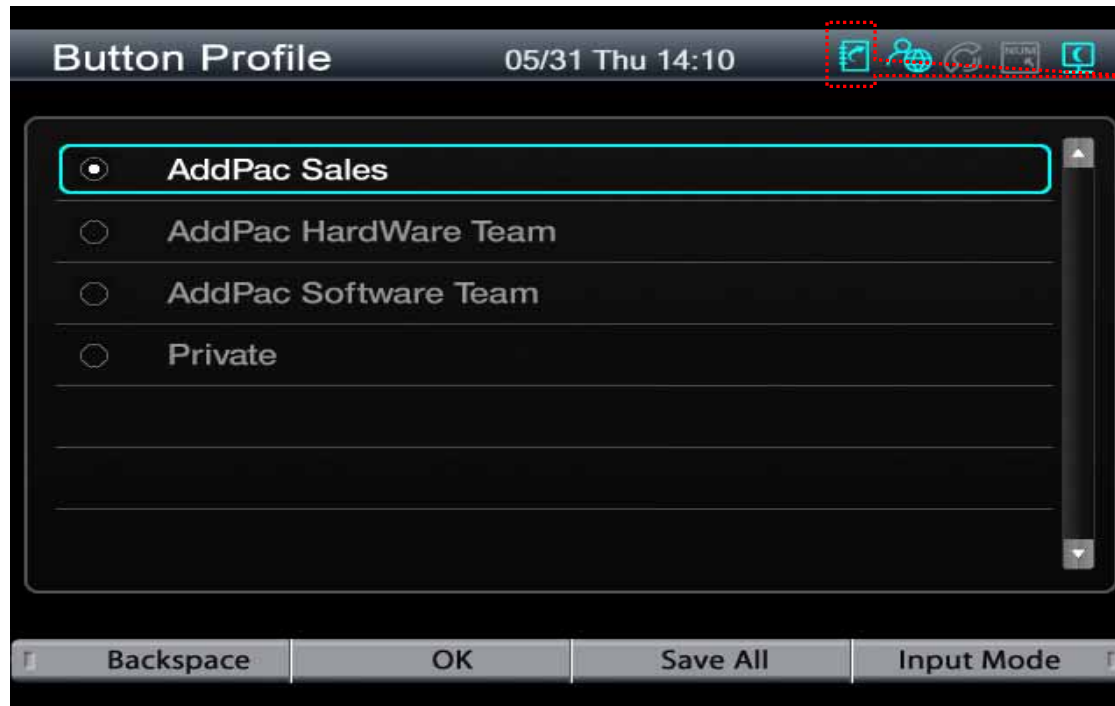
- After input Login Information, Press OK
  - Login result popup on the bottom
  - Icon Change on right side of the top
  - If Login is success ,“Login Success” Message will appear on the bottom of the screen

# Speed Button Profile Select




- After connect to Presence Server, Terminal get Speed Button Profile List from Presence Server
  - User can Get Speed Button Profile which you select in list
  - If user don't want to get Speed Button Profile, select 'Private'. User can register or modify Speed Button Profile as user want.

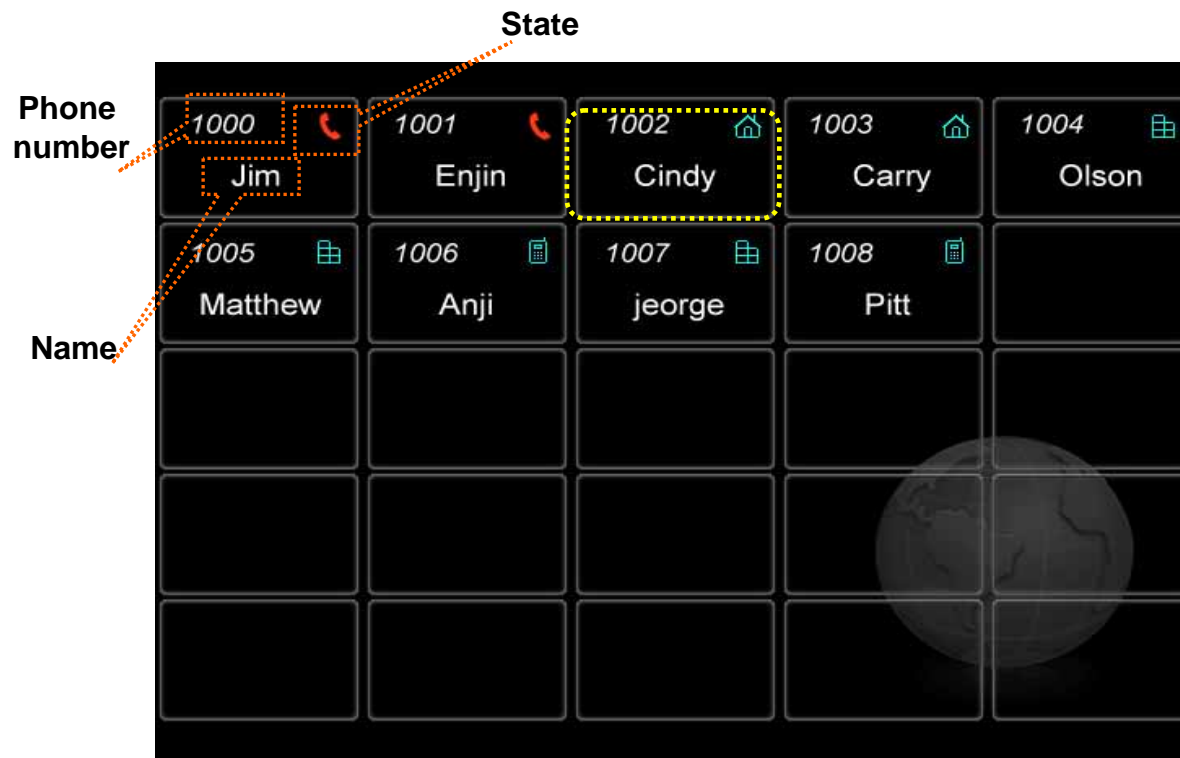
# Speed Button Profile Update Notification



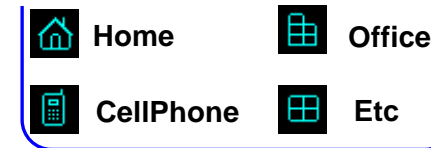
Speed Button Profile Update Notify

- When Speed Button Profile Update Notify comes
  - Icon Change to
  - After select Speed Button Profile, user get Updated Speed Button Profile from Presence Server and Icon Change back to 

# Speed Button Map View



## Idle Status Icons



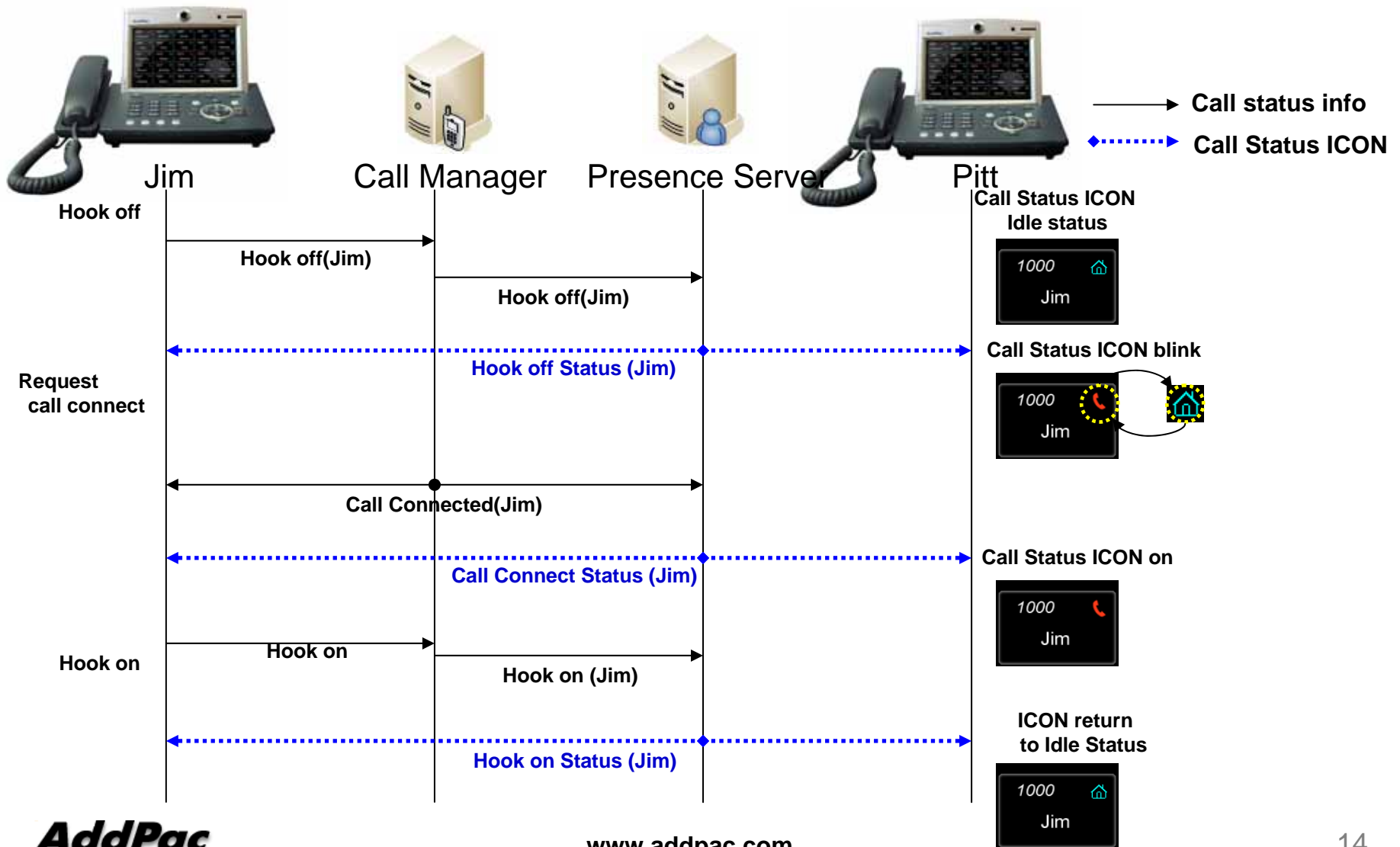
## Call Status Icon



- Icon on : hook off, calling status
- Icon Blink : ringing status

- Show Button Profile in Map Type. The layout is same as Speed Button Keys on the KeyPad
- Icon means
  - In Idle Status : place of phone number
  - In Call Status : Call Status ICON turn on or blink. Each means difference status.

# Indicate User Presence Information on Call Status ICON



# Speed Button List View



- Show Button Profile in List Type.
  - If you want to call to Cindy, move to number 3(Cindy), press *OK* or *Send key*
  - Enable delete or modify speed button (Button Profile will change to 'Private')
  - Icon represents the place of a phone number

# Speed Button Modify

The screenshot shows a 'Modify Button' screen with a table of button information. The table has three columns: Name, Number, and Type. The first row is highlighted with a red border and contains the following data:

	Name	Number	Type
1	Jim	2000	Home
2			
3			

Below the table is a numeric keypad with buttons for NUM1, 1, 2, 3, 4, 5, 6, 7, 8, 9, \*, 0, and #. At the bottom of the screen are four buttons: Backspace, OK, Save All, and Input Mode.

- Modified Button Information Save in Local.
- After change Phone Number, user can get presence information for new number.





# Thank you!

**AddPac Technology Co., Ltd.**  
Sales and Marketing

Phone +82.2.568.3848 (KOREA)

FAX +82.2.568.3847 (KOREA)

E-mail [sales@addpac.com](mailto:sales@addpac.com)