



## AP1700 BcN Analog VoIP Gateway

VoiceFinder AP1700 is a new cutting edge BcN (Broadband Convergence Network) VoIP gateway supporting maximum 8 ports of analog voice interface. Analog interface of AP1700 provide an optimized call scenario when it interoperates with conventional PBX. Compact cost effective design and system architecture of AP1700 provides customer satisfaction in high quality, performance and system reliance.

VoIP gateway combining IP-PBX is now suggesting a new model for a main voice communication solution. In order to be a part of advanced VoIP communications naturally in the future, making an excellent choice of choosing VoIP gateway is essential. VoiceFinder AP1700 is a mid-range VoIP gateway providing two(2) analog VoIP module slots for 4-port FXS, 4-port FXO, 4-port E&M, 2-port FXS & 2-port FXO VoIP interface cards. It is suitable for general enterprises, small and public offices. It has functions as a media gateway which interoperates with IP-PBX and it enables to replace small and mid size analog PBX. Especially AP1700 provides an optimal solution of VoIP communications in telephony environments that using telephone lines and PBX to get connect with a head office.

AP1700 in the aspect of hardware architecture is designed to provide a high performance service as a media gateway. It provides several LEDs in front panel so that various operational status of VoIP ports can be checked. Two of 10/100Mbps fast Ethernet port and RS232C console interface on front panel of A1700 are the base for delivering various network services such as LAN-to-LAN routing, Bridge and NAT/PAT service etc

Various VoIP gateways of AddPac are approved for its capability and reliability in world wide markets. This AP1700 will be an excellent choice for BcN (Broadband Convergence Network) environment by supporting concurrent triple stack such as H323, SIP, MGCP and QoS (Quality of Service) for high quality of communication.

## APOS Internetworking Software

APOS™(AddPac Internetworking Operating System) is AddPac's unique software which supports data, voice, video and security. It provides scalability, reliability, stability and QoS for internetworking solutions. It also provides optimized performance and industry standard network functionality with easy-to-use, easy-to-installation and maintenance.

## Product Highlights

- Powerful RISC Microprocessor Architecture
- 8-Port Analog VoIP Gateway
- Two(2) Slot for VoIP Interface Module
- 4-Port FXS, FXO, 2-Port FXS & 2-Port FXO VoIP, 4-Port E&M Module
- Two(2) 10/100Mbps Fast Ethernet Interface
- RS-232C (RJ45) Console Port for CLI Interface
- Front Panel LED for Real-time Status Monitoring
- Concurrent Triple Stack of SIP, H.323, MGCP
- Multi Protocol Routing for LAN and WAN Access
- Voice Processing Features
  - VAD, DTMF, CNG, G.168, T.38 G3 Fax Relay
  - G.723, 729A, G.726, 711
- High-performance IP-Routing Capability with Reliability
- Static and IEEE 802.1Q VLAN Routing Protocols including VRRP
- SNMP MIB V2 for Network Management
- Standard & Extended Access List for Security
- Essential Scalability Features such as DHCP Server & Relay, NAT/PAT, IEEE Transparent Bridging, and Debugging/Diagnostics, etc.
- Remote Firmware Upgrade Through FTP & TFTP Protocol
- CISCO-style CLI (Command Line Interface)
- APOS Guarantees Scalability, Reliability, Stability

## AP1700 Applications

- Inter-Office Internet Telephony System
- VoIP Gateway for Enterprises
- Media Gateway of IP-PBX

## Hardware Specification

- RISC Microprocessor (CPU)
- Memory
  - System memory 4Mbyte Flash Memory
  - Main memory 32Mbyte SDRAM
- Two(2) VoIP Interface Module Slots
  - AP-N1-FXS4 4-port FXS Interface Module (4 x RJ11)
  - AP-N1-FXS2O2 2-port FXS Interface & 2-Port FXO Interface Module (4 x RJ11)
  - AP-N1-FXO4 4-port FXO Interface Module (4 x RJ11)
  - AP-N1-E&M4 4-port E&M Interface Module (4 x RJ45)
- Ethernet Interface
  - 10/100Mbps 2-port Ethernet (RJ-45)
- Console Port
  - RS-232C 1-port Console (RJ-45)

## Power & Operational environment

- Power Supply VAC 110~220V, 50/60Hz, 5V, 8A, 40Watt
- Temperature 0°C~+45°C (operating)
- Temperature -40°C~+85°C (storage)
- Humidity 5%~95%

## Dimensions

- H x W x D : 55 x 340 x 267 (mm) – 19Inch Rack Mountable Chassis (Bracket Support)

## IP Routing Protocol

- Static and IEEE802.1Q VLAN Routing

## WAN Protocol

- Broadband IP Network
- PPPoE
- Standard Compliant WAN Network Protocol

## Voice over IP Service

- H.323, SIP, MGCP Triple Concurrent VoIP Signaling Protocol
- VAD, DTMF, CNG, G.168, T.38 FAX Relay
- Voice Codec : G.723, G.729, G.726, G.711, etc
- High Level VoIP Signaling Debugging Features
- Polarity Inversion Feature
- Various VoIP Features
- Interoperable with Diverse VoIP Gateways
- Interoperable with Diverse VoIP Gatekeeper, SIP Proxy, MGC

## Operation & Management

- Performance Analyzing (Process, CPU, Interface)
- Configuration Backup and Restore for APOS Management
- Debugging and Diagnosis Features
- System Booting/Rebooting through Watch Dog
- Data Logging Features
- IP Traffic Statistics through Accounting
- Debugging/Diagnostic

## Network Management

- Standard SNMP Agent (MIB v2) Support
- Console, Telnet, Web Based Management
- Remote Download via FTP/TFTP
- Remote Firmware Upgrade using FTP/TFTP

## Traffic QoS Control

- Traffic QoS Control Feature For Services
- Voice, Data Prioritizing Control
- Various QoS Algorithm Support

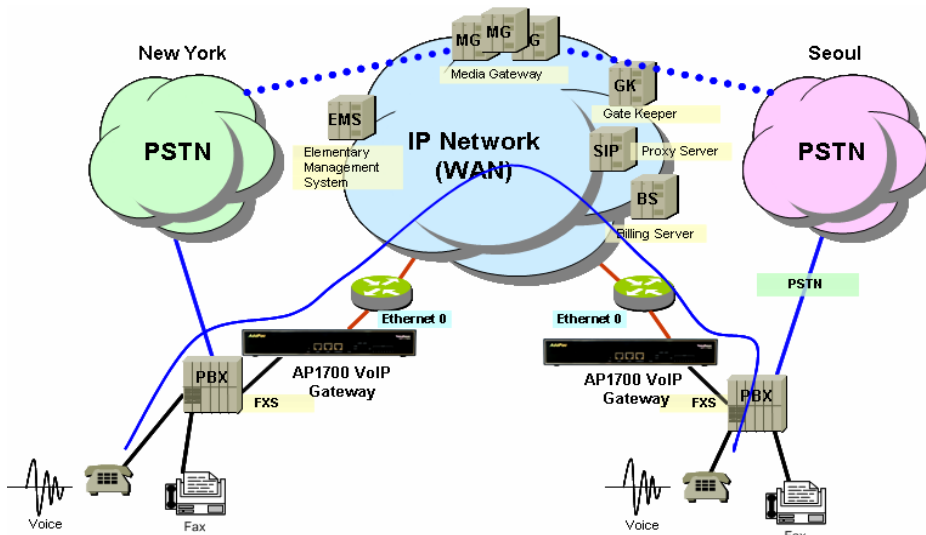
## Security Feature

- IP Packet Filtering / Access List
- Access Control and Data Protections
- Enable/Disable for Specific Protocols
- Multi-level User Account Management
- Auto-disconnect for Telnet/Console Sessions
- PPP User Authentication Support
- Password Authentication Protocol (PAP)
- Challenge Handshake Authentication Protocol (CHAP)

## Other Features

- DHCP Server and Relay
- Network Address Translation (NAT)
- Port Address Translation (PAT)
- Transparent Bridging (IEEE Standard)
  - Spanning Tree Bridging Protocol
  - Concurrent Routing and Bridging
- NTP (Network Time Protocol)
- Cisco Style Command Line Interface
- Standard Compliant Network Protocol
- AddPac Proprietary IP Sharing
- MAC Address Filtering
- DNS Proxy

## AP1700 Network Diagram



## Ordering Information

- AP1700-01 : AP1700 Standard Configuration
- Two(2) Fast Ethernet Port
  - One(1) RS-232C Console Port
  - RISC CPU,
  - 4MB Flash, 32MB SDRAM
  - APOS v8.xx Manual
- CAB-LAN Ethernet Cable
  - CAB-CON RS-232C Console Cable
  - AP-N1-FXS4 4-port FXS Module
  - AP-N1-FXS2O2 2-port FXS & 2-Port FXO Module
  - AP-N1-FXO4 4-port FXO Module
  - AP-N1-E&M4 4-Port E&M Module