



AP-PS2000 Presence Server

High-performance Next Generation IP-PBX Solution



AddPac

AddPac Technology

Sales and Marketing

www.addpac.com

Contents

- Product Overview
- Hardware Specification
- Software Service
- Presence Server Service Model
- Presence Server System Diagram
- Network Service and Features
- Application Area
- Ordering Information

Product Overview

Next Generation Presence Server Solution

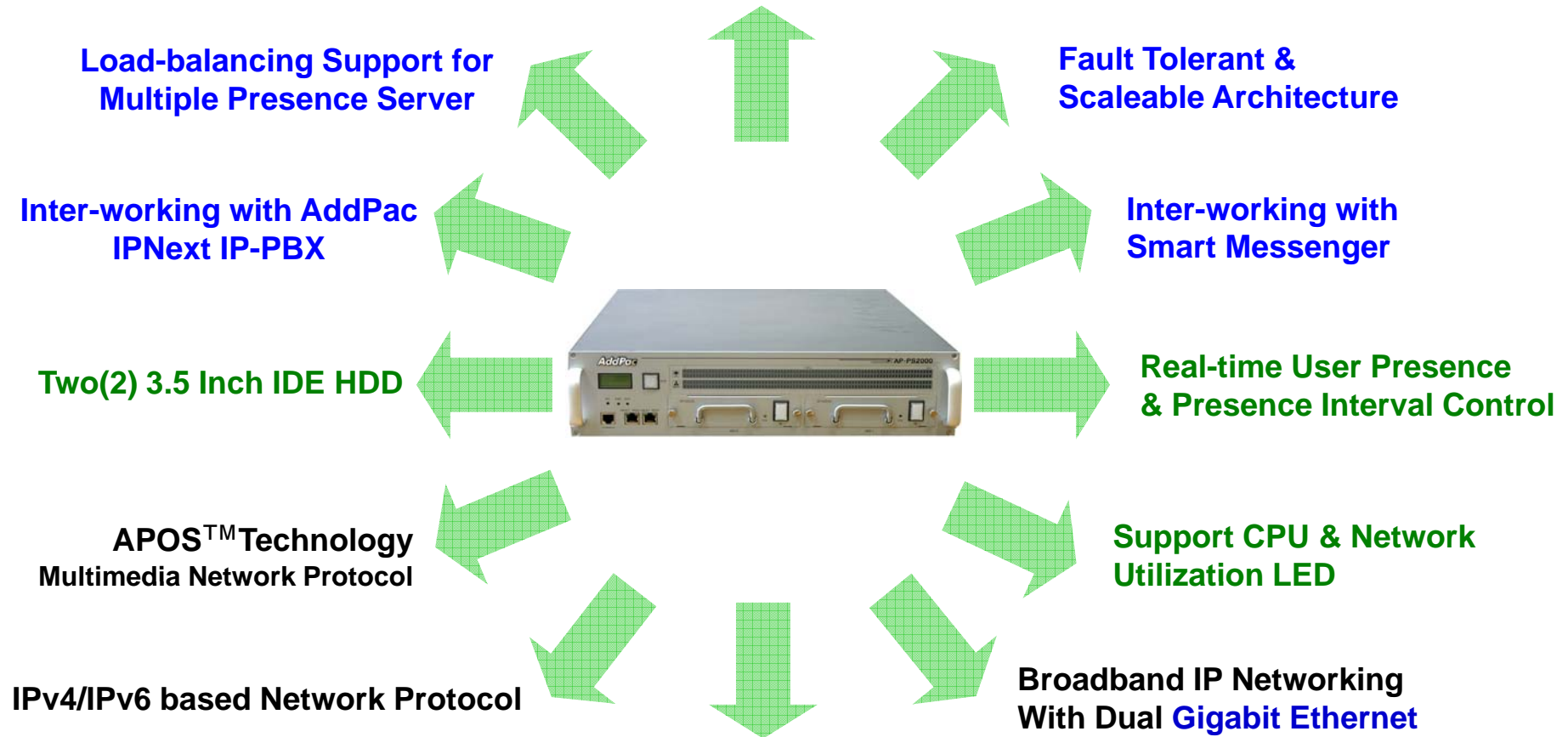
- Presence Server Solution for IP based Advanced PBX
- Powerful Management and User Friendly Features
- Fault Tolerant and Scalability Architecture
- Firmware Upgradeable Architecture
- Two(2) 3.5 Inch Hard Disk (RAID 1)
- Two(2) Gigabit Ethernet Interface
- Dual Redundancy Power Module



Product Highlights

Next Generation Presence Server Solution

High Performance Presence Server



Hardware Specification

Next Generation Presence Server Solution

A square logo with a dark blue background and a white border. The text "RISC" is positioned above "CPU" in white, sans-serif font.

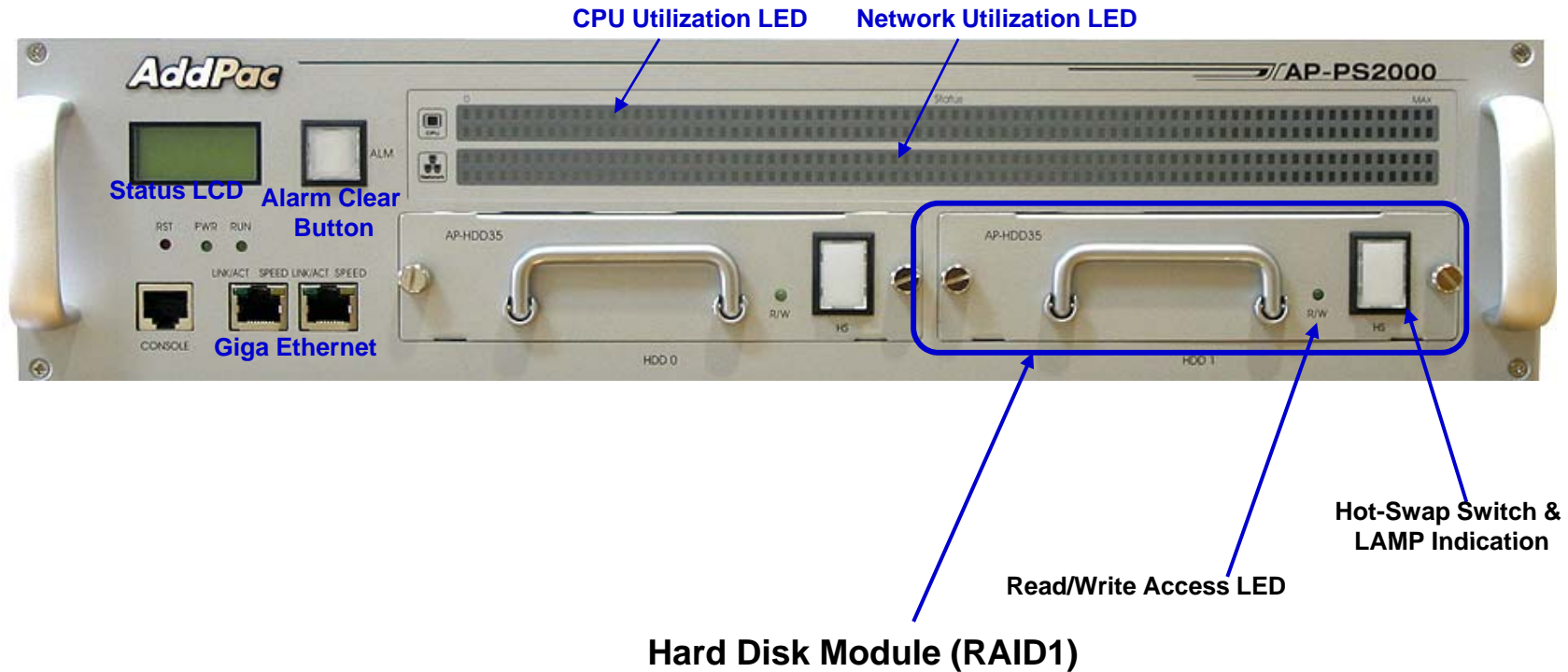
- **RISC Microprocessor Computing Power**
- **Main Chassis**
 - **Network Interface**
 - Two(2) 10/100/1000Mbps Gigabit Ethernet
 - One(1) RS-232C Console (RJ45)
 - **Two(2) 3.5 Inch Hard Disk Interface Slot (RAID 1)**
 - **Dual Redundancy Power Supply Module**
 - **CPU & Network Utilization Monitoring Display LEDs**

Hardware Specification

Next Generation Presence Server Solution



AP-PS2000 Front Side



Hardware Specification

Next Generation Presence Server Solution

RISC
CPU

AP-PS2000 Back Side

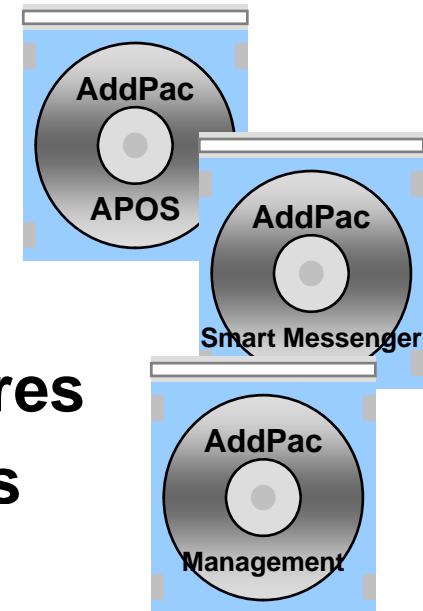


Power Supply Module

Software Service

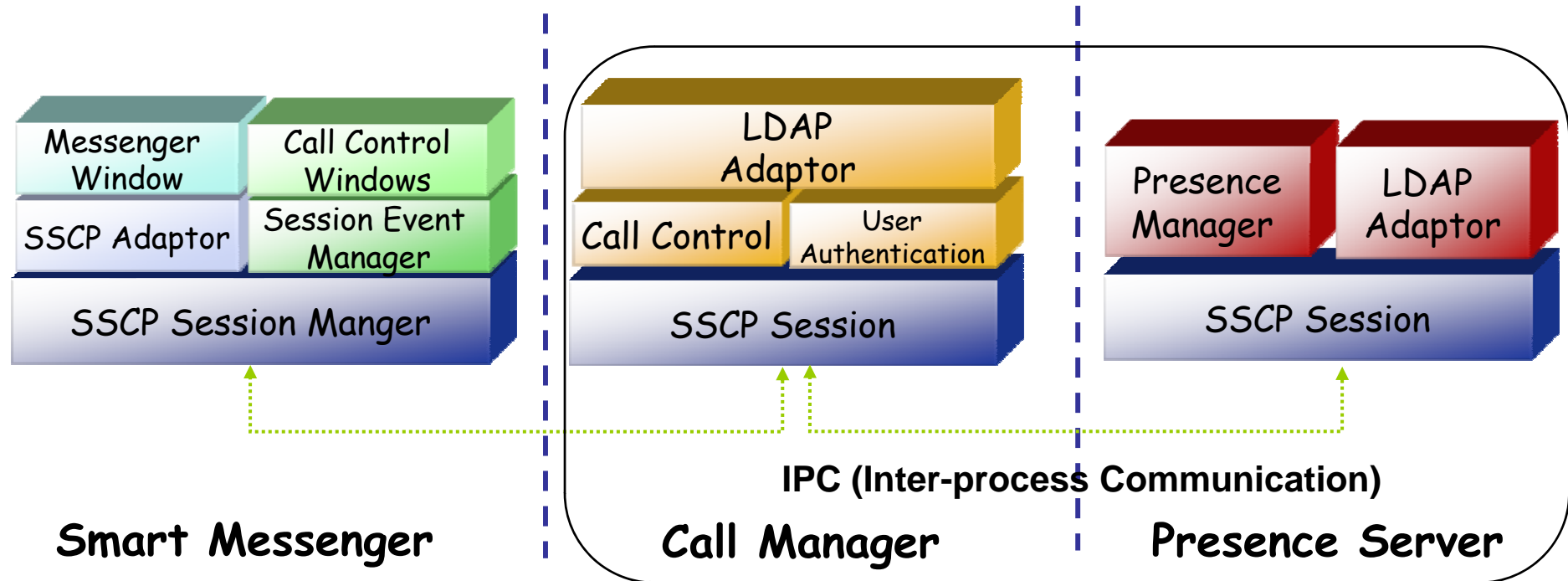
Next Generation Presence Server Solution

- **Built-in AddPac APOS Internetworking Software**
 - Scalability, Functionality, and Stability Features
 - Advanced Presence Server Features
 - QoS Control Features
- **Firmware Upgradeable Architecture**
- **Industry Standard Network Protocol Features**
- **Highly User Friendly Management Features**
 - PC based Smart Messenger
 - Smart Multimedia Manager for Operation & Management



Presence Server Built-in Model

Next Generation Presence Server Solution

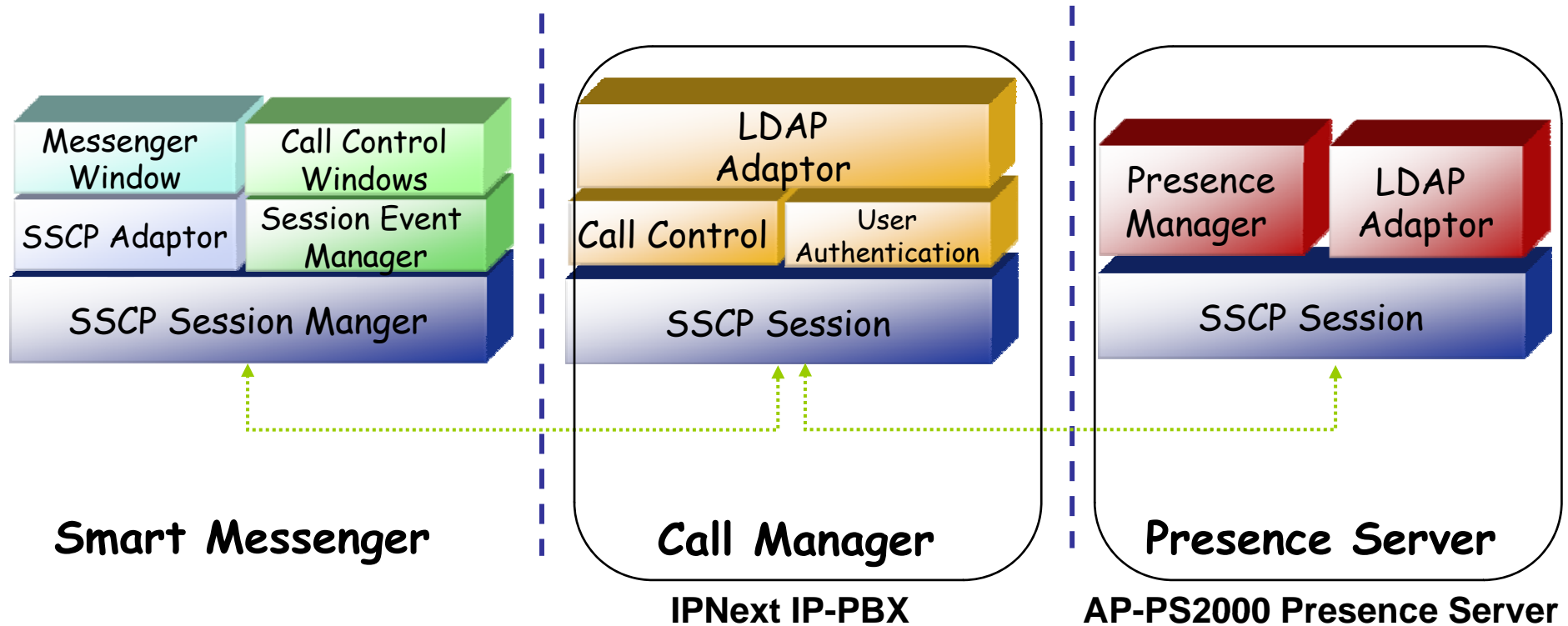


IPNext IP-PBX include Call Manager & Presence Server Function

- Small Scale User Presence Solution
- Low Cost Solution

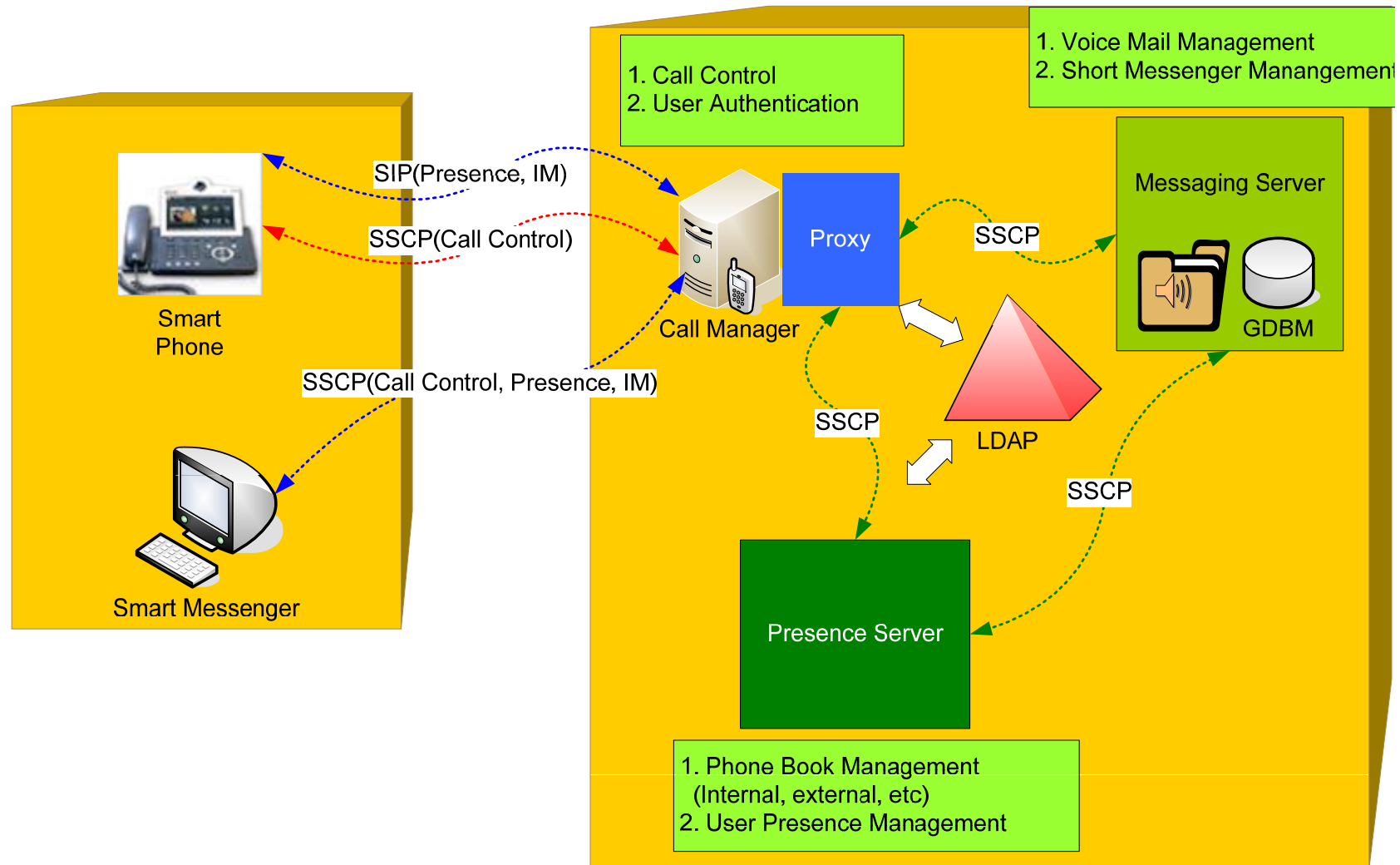
Independent Presence Server Model

Next Generation Presence Server Solution

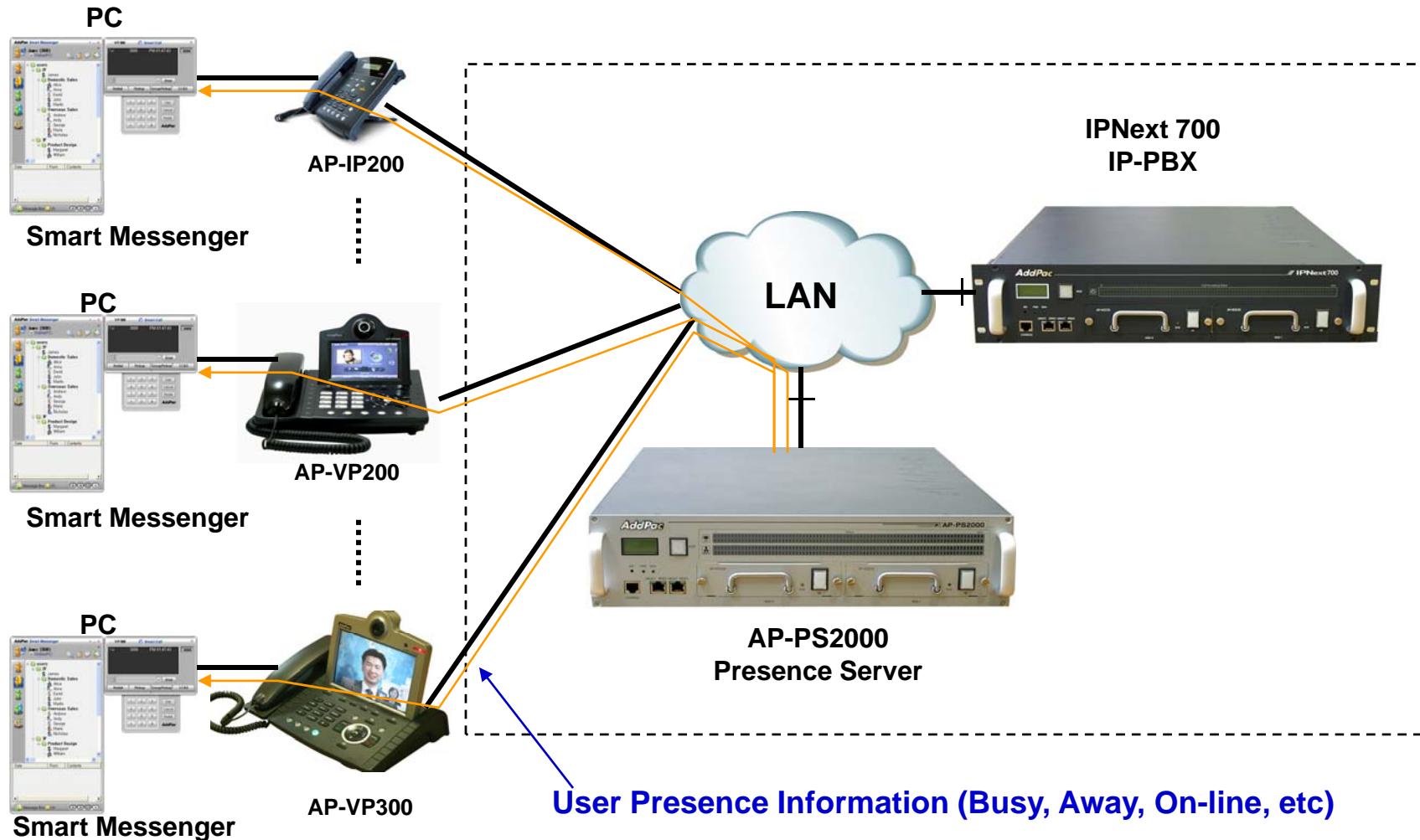


- Large Scale User Presence Solution
- Scalable Architecture
- Load balancing Arch. for Multiple Presence Servers

Presence Server System Diagram



Presence Server System Diagram



Network Service and Features

Next Generation Presence Server Solution

Basic Network Protocols

- ARP, IP, IPv6, TCP, UDP, ICMP, ICMPv6, SCTP, IGMP, MLD

Routing Protocol

- IPv4 : Static
- IPv6 : Static

Service Protocol

- FTP, Telnet, TFTP, DHCP Server/Relay, SNMP Server
- CDP (Cisco Discovery Protocol)
- DNS Resolver , DDNS(nsupdate)
- Bridge
- Syslog
- IP/IPv6 policy control (QoS)
- VPDN (Virtual Private Dial-up Network : L2TP Server)

Network Service and Features

Next Generation Presence Server Solution

IPv4/IPv6 Interworking

- NAT/PAT for IPv4
- IP connect (formerly ip-share) and device cascade for IPv4
- IP/IP, IP/GRE tunneling
- NAT-PT
- 6to4, Autoconfig tunneling

IPv4 Address Configuration

- Fixed (Static)
- DHCP
- PPPoE

IPv6 Address Configuration

- Fixed (Static)
- EUI-64
- Autoconfig (Neighbor Advertisement and Solicitation)

Network Service and Features

Next Generation Presence Server Solution

Miscellaneous

- Cisco Style CLI
- Standard & Extended IPv4/IPv6 Access List
- Multi-level User Account Management
- IP accounting
- fsh (Embedded file system shell)
- STUN Client

Network Service and Features

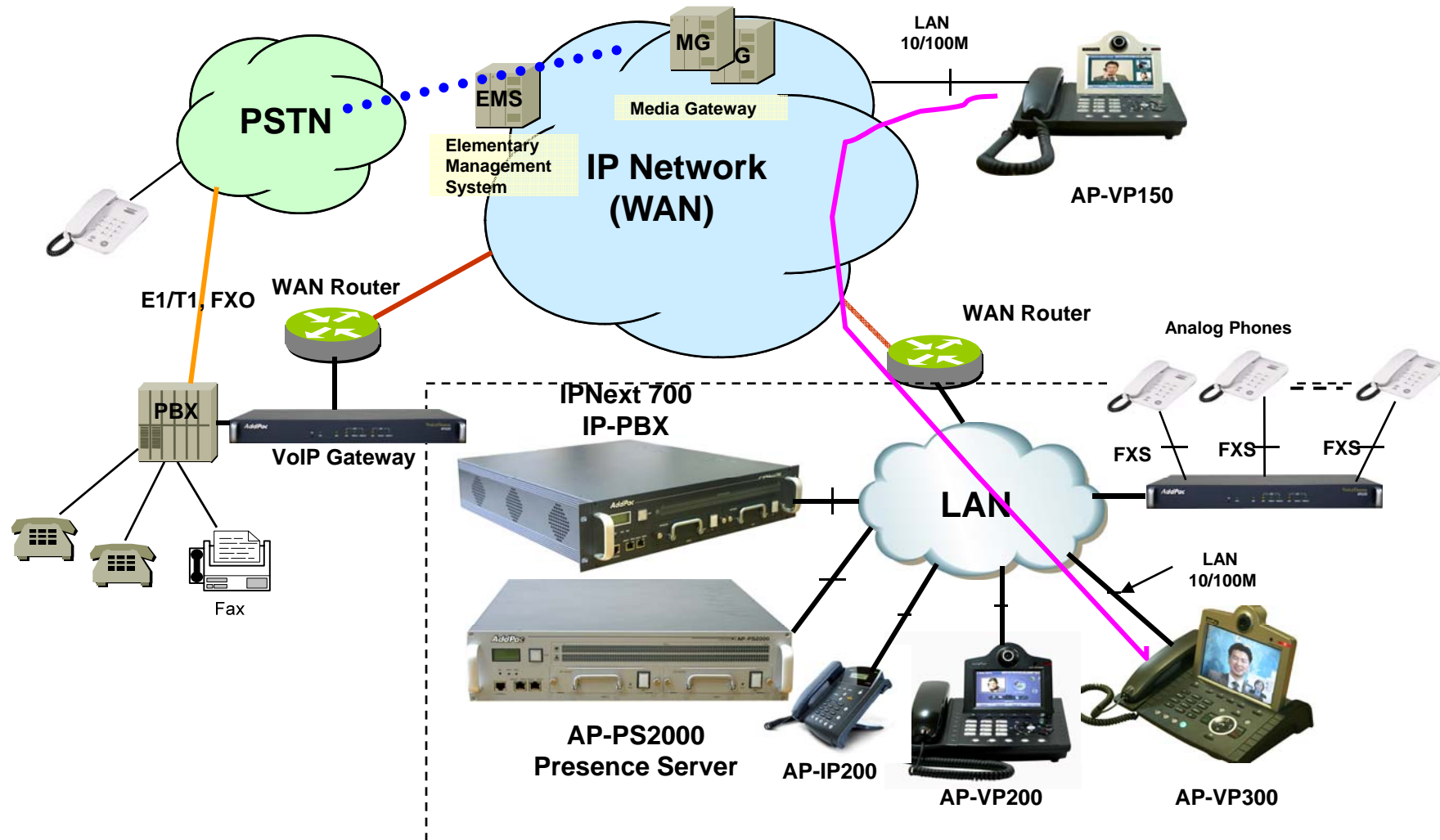
Next Generation Presence Server Solution

SNMP MIBs

- MIB-II
- RMON MIBs (Statistics, History, Alarm, Hosts Group)
- RFC2465 Management Information Base for IP Version 6: Textual Conventions and General Group
- RFC2466 Management Information Base for IP Version 6: ICMPv6 Group
- RFC2452 IP Version 6 Management Information Base for the Transmission Control Protocol
- RFC2454 IP Version 6 Management Information Base for the User Datagram Protocol
- AddPac Enterprise MIBs
- etc

Standard IP-PBX Application

Next Generation Presence Server Solution



Ordering Information

- **AP-PS2000 Next Generation Presence Server Hardware**
 - AP-PS2000 Presence Server Main Body
 - High-performance 64bit RISC CPU
 - 2-ports Gigabit Ethernet and 1-port RS-232C Console
 - Including Network Cable Set & Ext. Power Supply, etc.
 - RAID 1 Dual Hard Disk (3.5 Inch IDE 160 Giga, Extendable)
 - Dual Power Supply Module
- **Built-in APOS Internetworking Software for AP-PS2000**
- **Including 1 Year Hardware Warranty**
- **Product Documents**
 - Install and Operation Guide (PDF)
- **Pricing**
 - AddPac Technology Regional Sales Manager
 - Authorized Sales and Marketing Representatives
 - Please Contact www.addpac.com

AP-PS2000 Presence Server

Thank you!

AddPac Technology Co., Ltd.
Sales and Marketing

Phone +82.2.568.3848 (KOREA)

FAX +82.2.568.3847 (KOREA)

E-mail sales@addpac.com