

# AP-VC1000

## Video Conference Equipment

High Performance BcN Video Terminal Solution  
(BcN : Broadband Convergence Network)

## PPTP (Point-to-Point Tunneling Protocol) Features



# **AddPac**

**AddPac Technology**

Sales and Marketing

[www.addpac.com](http://www.addpac.com)

# Contents

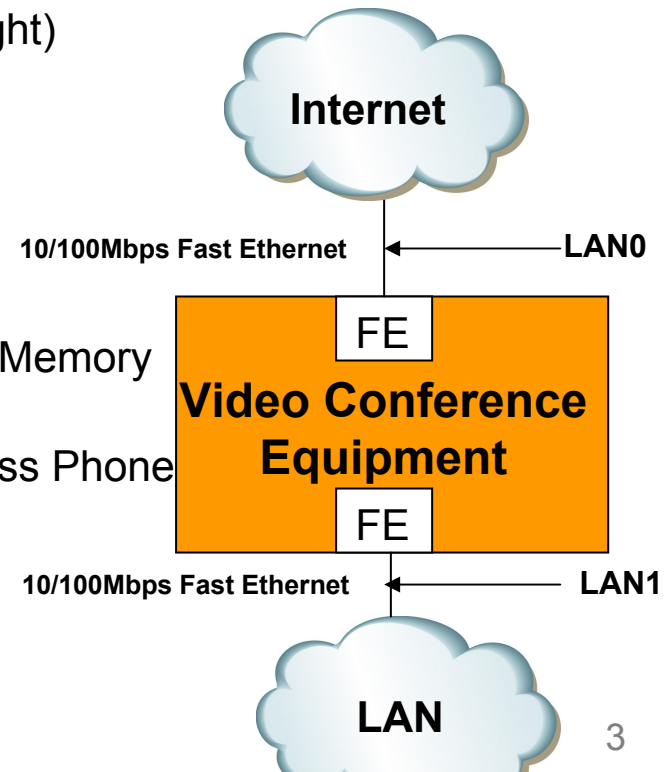
- AP-VC1000 H/W Specification
- PPTP Network Service Diagram
- APOS Commands for PPTP function
- Application Examples



# H/W Specification

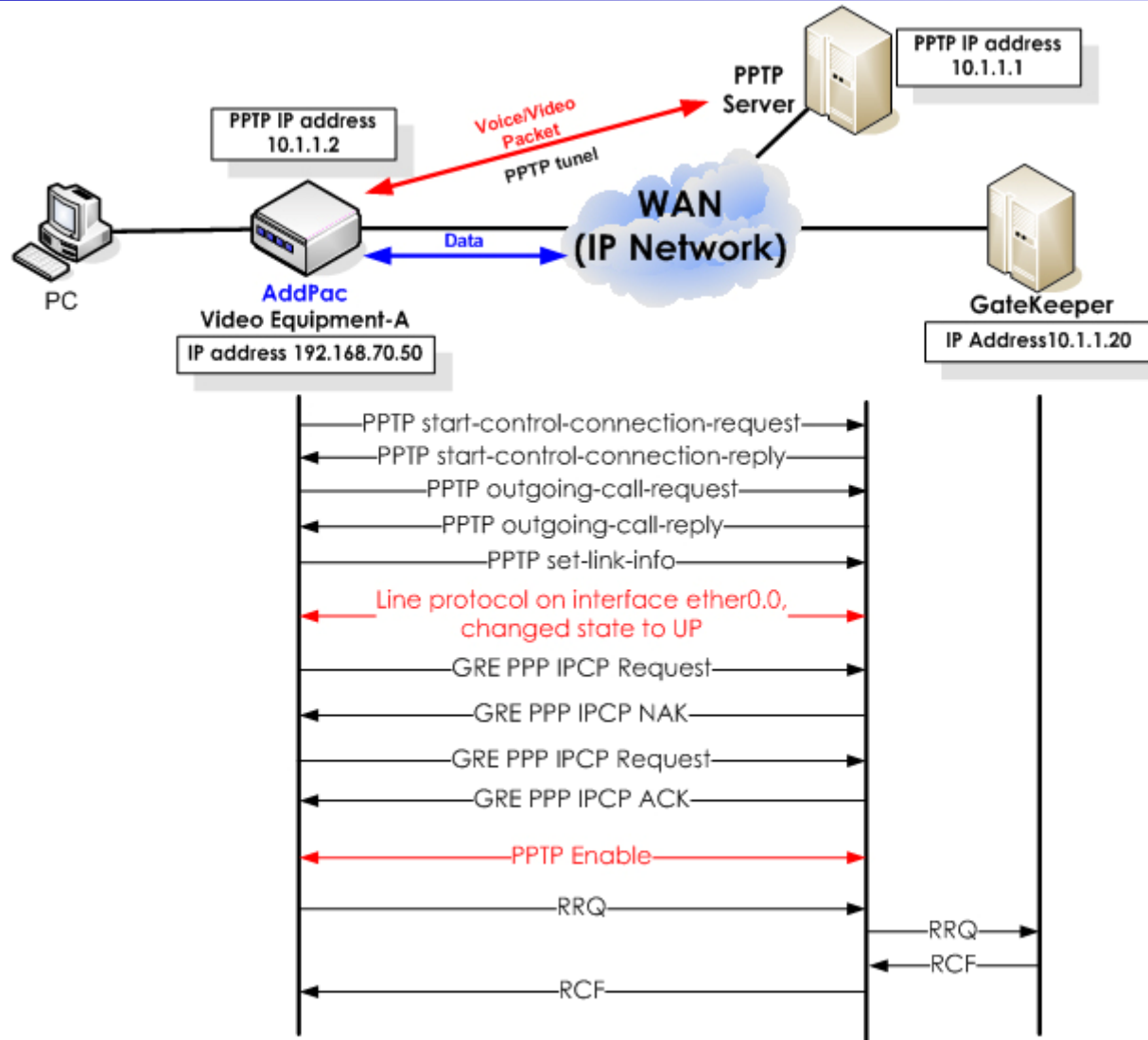
## AP-VC1000 Video Conference Equipment

- **RISC Microprocessor Computing Power**
- **High-end Programmable DSP Hardware Architecture**
- **External Powerful Audio/Video Interface**
  - Composite RCA Out, S-Video Out, Component Out, D-sub 15pin VGA Out
  - Composite RCA Input, S-Video Input
  - Camera PAN/TILT/ZOOM via DB-9 RS-232C/RS422 Interface
  - Stereo Audio Input Connector (3.5mm)
  - Stereo RCA Type Audio Output Connector (Left, Right)
- **Internal Speaker**
- **Network Interface**
  - Two(2) 10/100Mbps Fast Ethernet (RJ45)
  - One(1) RS-232C Interface (RJ45) for Console
- **USB Interface**
  - USB 1.1 Master Interface for USB Wifi, HDD, Flash Memory
- **VoIP Gateway**
  - 1-Port FXS VoIP Interface for Analog Phone, Wireless Phone



# Network Service Diagram

## AP-VC1000 Video Conference Equipment



# APOS Commands for PPTP

## AP-VC1000 Video Conference Equipment

### PPTP Function Enable

STEP	Command	Explanation
1	<b># config</b>	Enter the APOS command Setting Mode
2	<b>(config)# interface eth 0.0</b>	Enter the interface setting mode
3	<b>(config-ether0.0)# no ip address</b>	IP address disable
4	<b>(config-ether0.0)# encapsulation ppp-pptp</b>	PPTP setting as Network Protocol (notice : interface pptp0 is created when encapsulation ppp-pptp is enable)
5	<b>(config-ether0.0)# pptp ip remote 192.168.2.200</b>	PPTP Server IP address setting
5	<b>(config-ether0.0)# pptp route data</b>	This command is used when a user want to send Data to PPTP interface (optional)
7	<b>(config-ether0.0)# ppp authentication chap callin</b>	Chap protocol setting as PPP authentication
8	<b>(config-ether0.0)# ppp chap hostname addpac</b>	Chap USER ID = "addpac"
9	<b>(config-ether0.0)# ppp chap password 1234</b>	Chap PASSWORD = "1234"
10	<b>(config-ether0.0)# no ppp ipcp ms-dns</b>	Disable the configuration setting that DNS IP address can be received from PPP server

# APOS Commands for PPTP

## AP-VC1000 Video Conference Equipment

11	(config-ether0.0)# no ppp ipcp default-route	Disable the configuration setting that Default router's IP address can be received from PPP Server. (important)
12	(config-ether0.0)#exit	Exit from the interface setting mode
13	(config)# interface pptp0	Enter the interface pptp0 setting mode
14	(config-pptp0)# ip address 192.168.70.50 255.255.255.0	IP address setting (Please refer to Quick Operation Guide for DHCP, PPPoE configuration.)
15	(config-ether0.0)#exit	Exit from interface 0.0 setting mode
16	(config)#route 0.0.0.0 0.0.0.0 192.168.70.1	Default router setting
17	(config)#route 20.1.1.0 255.255.255.0 10.1.1.1	If a user want to send the traffic of 20.1.1.0 network to other network via 10.1.1.1 network, this static routing command is used. (optional)
18	(config)# ip-policy ip host voip-interface any route-if ether0.0	This configuration is used when a user want to send DATA traffic to Public network and VoIP traffic to Private Network (optional)
19	(config)#exit	Exit from setting mode

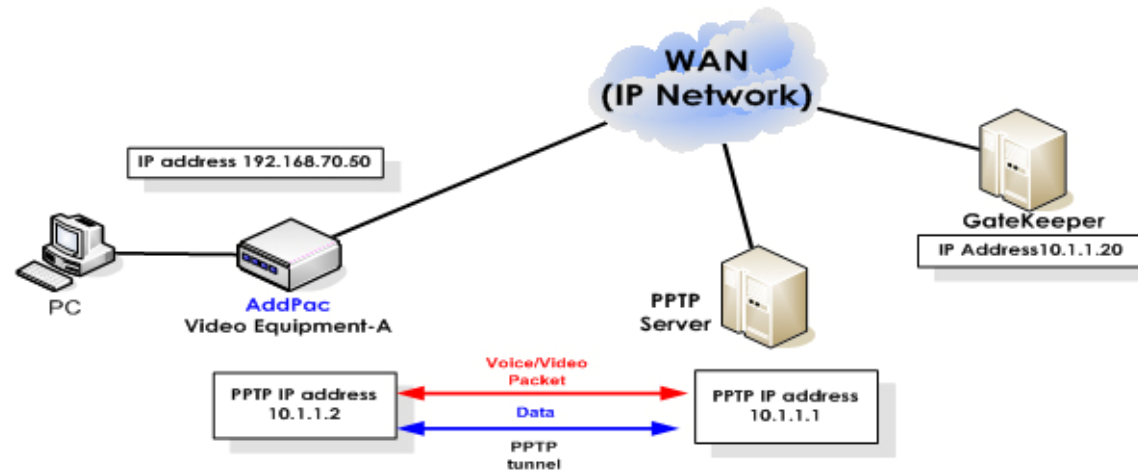
### PPTP Function Disable

STEP	Command	Explanation
1	(config-ether0.0)#no encapsulation ppp-pptp	PPTP Configuration Disable

# Application Example 1. (cont.)

## AP-VC1000 Video Conference Equipment

Send all traffic (VoIP + Data) to PPTP Interface



```
version 8.22p1
!  
hostname AP-VC1000  
!  
dhcp-list 0 type server  
dhcp-list 0 address server interface ether0.0  
dhcp-list 0 option dhcp-lease-time 600  
dhcp-list 0 option dns 168.126.63.1  
dhcp-list 0 option router-option 216.55.248.129
```

# Application Example 1.

## AP-VC1000 Video Conference Equipment

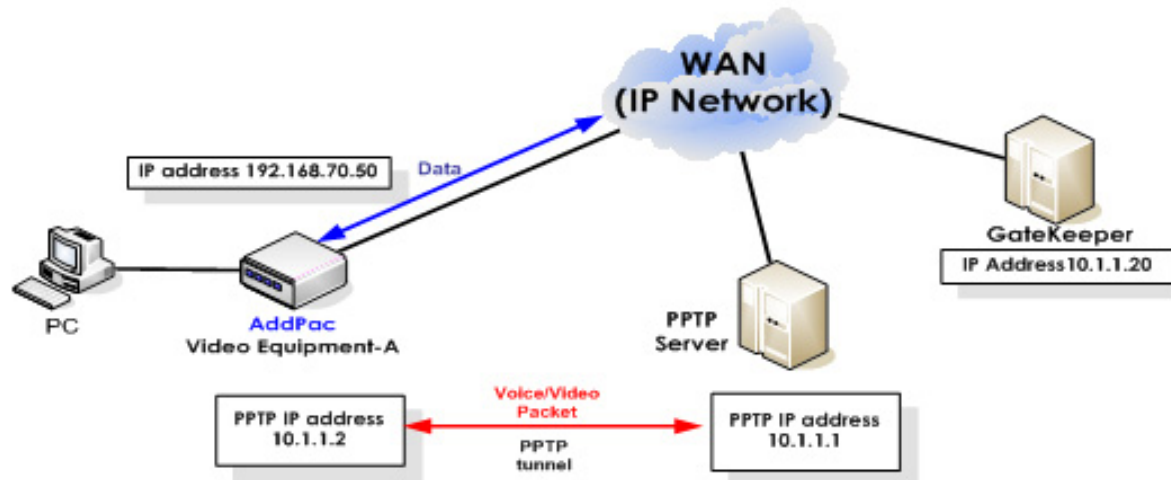
```
!  
dhcp-list 1 type server  
dhcp-list 1 address server 10.1.1.2 10.1.1.126 255.255.255.128  
!  
ip-share enable  
ip-share interface net-side ether0.0  
ip-share interface local-side ether1.0  
!  
interface ether0.0  
no ip address  
encapsulation ppp-pptp  
pptp ip remote 192.168.2.200  
ppp authentication chap callin  
ppp chap hostname Addpac  
ppp chap password 1234  
no ppp ipcp ms-dns  
no ppp ipcp default-route  
!  
interface ether1.0  
no ip address  
ip dhcp-group 0  
!  
interface ptp0  
ip address 192.168.70.50 255.255.255.0
```



# Application Example 2. (cont.)

## AP-VC1000 Video Conference Equipment

Send VoIP traffic only to PPTP Interface (IP Share Environment)



```
version 8.22p1
!  
hostname AP-VC1000  
!  
dhcp-list 0 type server  
dhcp-list 0 address server interface pptp0  
dhcp-list 0 option dhcp-lease-time 600  
dhcp-list 0 option dns 168.126.63.1  
dhcp-list 0 option router-option 216.55.248.129
```

# Application Example 2.

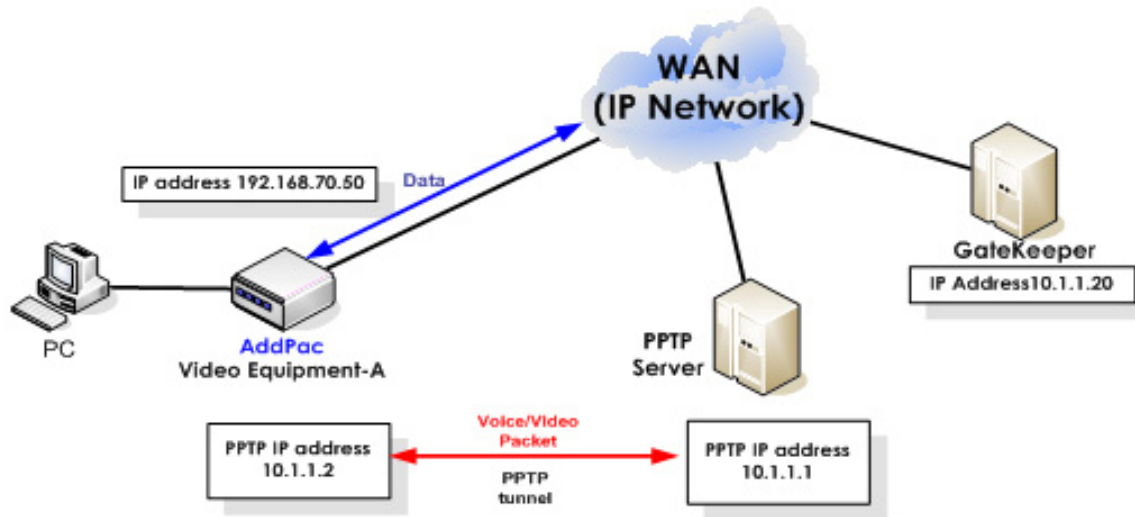
## AP-VC1000 Video Conference Equipment

```
!  
dhcp-list 1 type server  
dhcp-list 1 address server 10.1.1.2 10.1.1.126 255.255.255.128  
!  
ip-share enable  
ip-share interface net-side ptp0  
ip-share interface local-side ether1.0  
!  
interface ether0.0  
no ip address  
encapsulation ppp-pptp  
pptp ip remote 192.168.2.200  
pptp route data  
ppp authentication chap callin  
ppp chap hostname Addpac  
ppp chap password 1234  
no ppp ipcp ms-dns  
no ppp ipcp default-route  
!  
interface ether1.0  
no ip address  
ip dhcp-group 0  
!  
interface ptp0  
ip address 192.168.70.50 255.255.255.0  
!  
ip-policy ip host voip-interface any route-if ether0.0
```

# Application Example 3. (cont.)

## AP-VC1000 Video Conference Equipment

Send VoIP traffic only to PPTP Interface (PAT Environment)



```
version 8.234
!  
hostname AP-VC1000
!  
dhcp-list 0 type server  
dhcp-list 0 address server 10.1.1.2 10.1.1.254 255.255.255.0  
dhcp-list 0 option dns 168.126.63.1  
dhcp-list 0 option router-option 10.1.1.1  
!  
nat-list 1 pat static-entry tcp 1720 local
```

# Application Example 3.(cont.)

## AP-VC1000 Video Conference Equipment

```
nat-list 1 pat static-entry udp 5060 local
nat-list 1 pat static-entry tcp 1723 local
nat-list 1 pat group-static-entry udp 22000 22001 local
nat-list 1 pat group-static-entry udp 23000 24999 local
nat-list 1 pat group-static-entry tcp 10000 10999 local
nat-list 1 pat group-static-entry tcp 14000 14999 local
nat-list 1 pat group-static-entry tcp 18000 18999 local
nat-list 1 pat static-entry tcp 23 local
nat-list 1 pat group-static-entry tcp 20 21 local
nat-list 1 pat group-static-entry udp 67 68 local
nat-list 1 pat static-entry icmp ping local
!
no ip-share enable
ip-share interface net-side ether0.0
ip-share interface local-side ether1.0
!
interface ether0.0
no ip address
encapsulation ppp-pptp
pptp ip remote 192.168.2.200
pptp route data
ppp authentication chap callin
ppp chap hostname addpac
```

# Application Example 3.

## AP-VC1000 Video Conference Equipment

```
ppp chap password addpac
no ppp ipcp ms-dns
no ppp ipcp default-route ← This command is used when a used doesn't
want to get the default routing information from PPTP server
!
interface ether1.0
ip address 10.1.1.1 255.255.255.0
ip nat-group 1 pat ptp0 ← ptp0 interface ip (public IP) translate ,
ip dhcp-group 0
!
interface ptp0
no ip address
encapsulation pppoe
ppp authentication pap callin
```



# Thank you!

**AddPac Technology Co., Ltd.**  
Sales and Marketing

Phone +82.2.568.3848 (KOREA)

FAX +82.2.568.3847 (KOREA)

E-mail [sales@addpac.com](mailto:sales@addpac.com)