



AP-IP100

BcN IP Phone

High Performance IP Phone Solution

Preliminary Product Overview
(Without notice, following described technical spec. can be changed)



AddPac

AddPac Technology

Sales and Marketing

www.addpac.com

Contents

- Product Overview
- Hardware Specification
- Software Service
- Audio & Voice Service and Features
- Network Service and Features
- Application Area
- Ordering Information



Product Overview

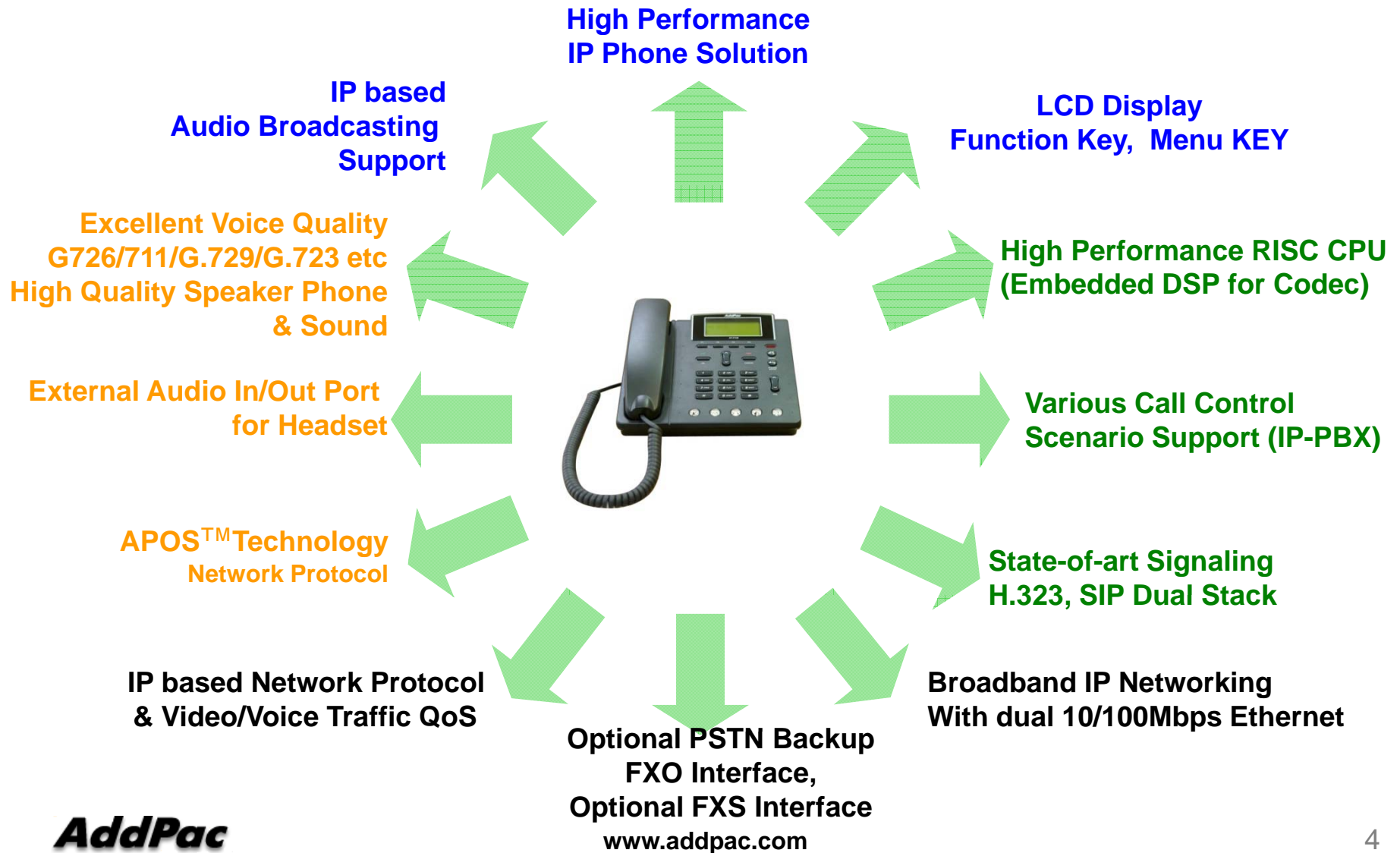
AP-IP100 IP Phone

- IP Phone Solution
- Audio Broadcasting Solution
- High-performance Audio, and Voice Service
- Firmware Upgradeable Architecture
- VoIP Solution with Outstanding Network Service Capability
- Audio Privacy Protection



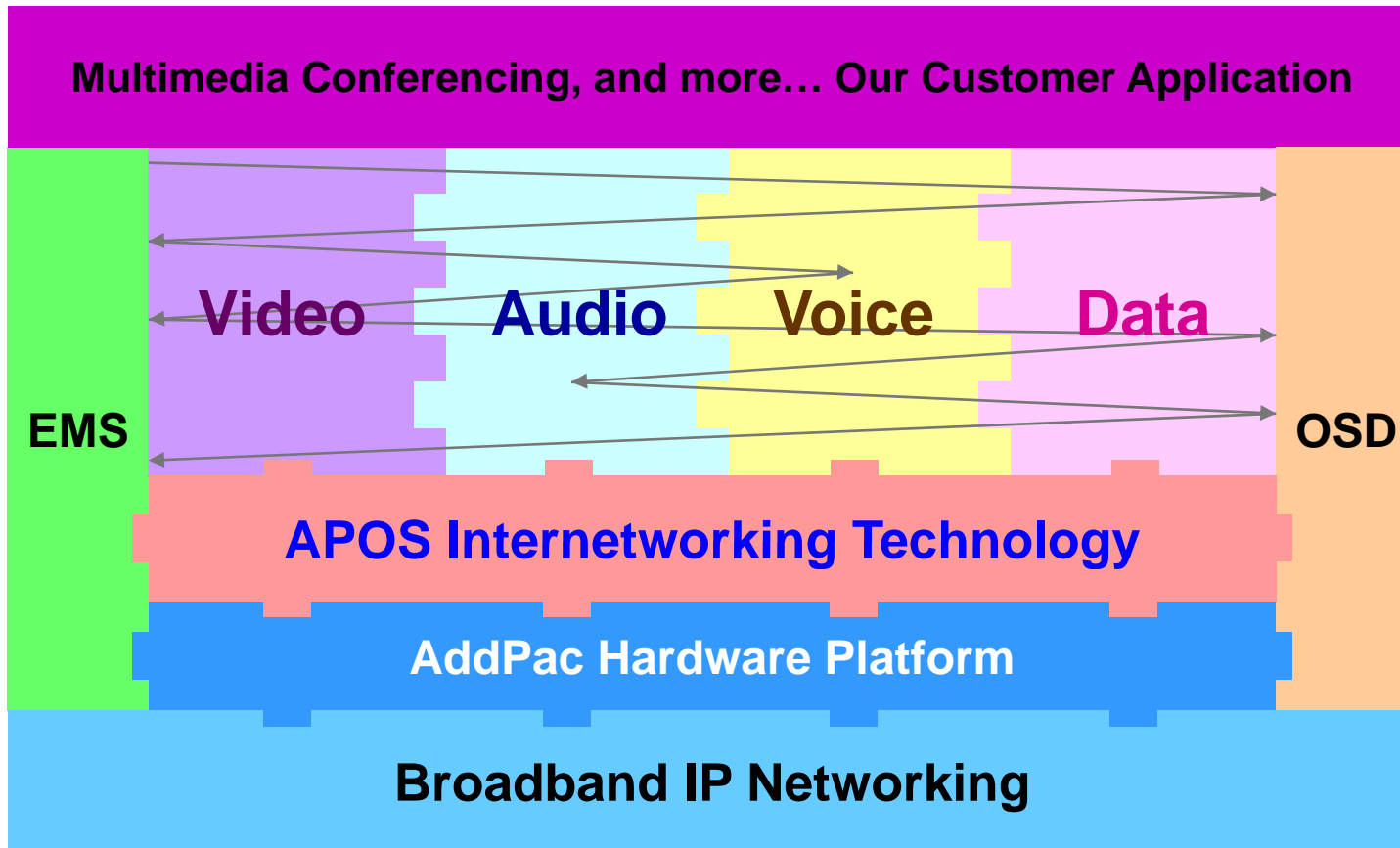
Product Highlights

AP-IP100 IP Phone



Multimedia Service

AP-IP100 IP Phone



- APOS : AddPac Internetworking Operating System
- OSD : On- Screen Display
- EMS : Element Management System

Hardware Specification

AP-IP100 IP Phone

- RISC+DSP Microprocessor Computing Power (Dual Processor Architecture)
- Optional PSTN Backup (FXO) Interface : AP-IP100E
- Optional Phone (FXS) Interface for FAX, Phone : AP-IP100B
- High quality Audio and Voice Interface
 - Stereo Audio Input Connector
 - Stereo Audio Output Connector
- Network Interface
 - Two(2) 10/100Mbps Fast Ethernet
- LCD Window : 66.54mm x 33.26mm(Active Area) Graphic LCD
- Power Supply
 - External Power Adaptor (5V, 2A)
 - Power over Ethernet(PoE) : Option

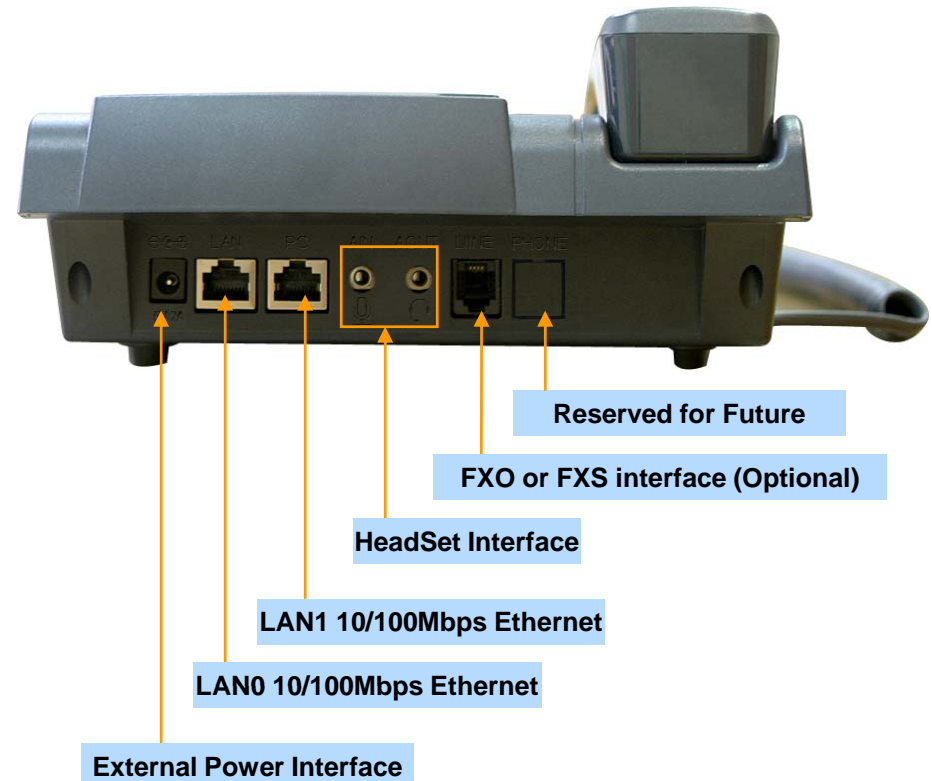
Hardware Specification

AP-IP100 IP Phone

Hardware Specifications

| AP-IP100 IP Phone | Basic Specifications |
|--------------------------------|--|
| CPU | RISC Microprocessor |
| Ethernet Interface | 2-Ports 10/100Mbps Ethernet Interface(RJ-45) |
| PSTN Backup Port (Optional) | 1-Port PSTN Backup Port(RJ-11) |
| Additional FXS Port (Optional) | 1-Ports FXS Voice Interface(RJ-11) |
| Flash Memory | 4Mbyte High-speed Flash Memory |
| Base Memory | 16Mbyte High-speed SDRAM |
| Power Requirement | External Power Supply Adaptor / VAC 110~220V, 50/60Hz, 10Watt, POE(Optional) |
| Operating Temperature | 0°C ~ 45°C (32 °F ~ 122°F) |
| Storage Temperature | -40°C ~ 85°C (-40°C ~ 185°F) |
| Relative Humidity | 5% ~ 95% (Non-condensing) |
| Dimensions | W x D x H (200mm x 210mm x 60mm) |
| Weight (g) | 1Kg |

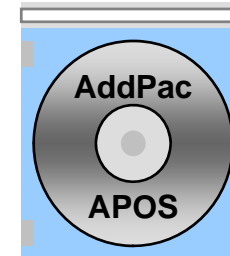
Network interface Configurations



Software Service

AP-IP100 IP Phone

- **Built-in AddPac APOS Internetworking Software**
 - Scalability, Functionality, and Stability Features
 - Audio Traffic QoS Control
- **Programmable Video, Audio, and Voice Services**
 - Audio, and Voice Codec
- **Firmware Upgradeable Architecture**
- **Industry Standard IP based Network Protocol Features**



Audio & Voice Service and Features

AP-IP100 IP Phone

- **Audio & Voice Networking Interface**
 - Audio Input/Output Port (2 x 3.5mm Stereo Female Connector)
- **VoIP based Signaling Protocol Support**
 - H.323, SIP Multiple Signaling Protocol Stack
 - H.323 Gateway, Gatekeeper Support
- **High-performance Audio & Voice Codec Support**
 - Line IN/OUT : G.726, G.711 Audio Codec, etc
- **Enhanced QoS Management Features for Voice Traffics**

Network Service and Features

AP-IP100 IP Phone

- **Network Managements**
 - Standard SNMP Agent (MIB v2) Support
 - Remote Management using Console, Telnet
 - Web based Management using HTTP Server Interface
- **Security Functions**
 - Standard & Extended IP Access List
 - Enable/Disable for Specific Network Protocols
 - Multi-level User Account Management
 - Auto-disconnect for Telnet/Console Sessions
 - PPP User Authentication Supports (PAP & CHAP)
- **Operation & Managements**
 - System Performance Analysis for Process, CPU, Connection Interface
 - Debugging, System Auditing, and Diagnostics Support
 - System Booting and Auto-rebooting with Watchdog Feature
 - System Managements with Data Logging
 - IP Traffic Statistics with Accounting

Network Service and Features

AP-IP100 IP Phone

- **Network Managements**
 - DHCP Server & Relay Functions
 - Network Address Translation (NAT) Function
 - Port Address Translation (PAT) Function
 - Transparent Bridging (IEEE Standard) Function
 - Spanning Tree Bridging Protocol Support
 - Remote Bridging Support
 - Concurrent Routing and Bridging Support
 - Cisco Style Command Line Interface (CLI)
 - Network time Protocol (NTP) Support

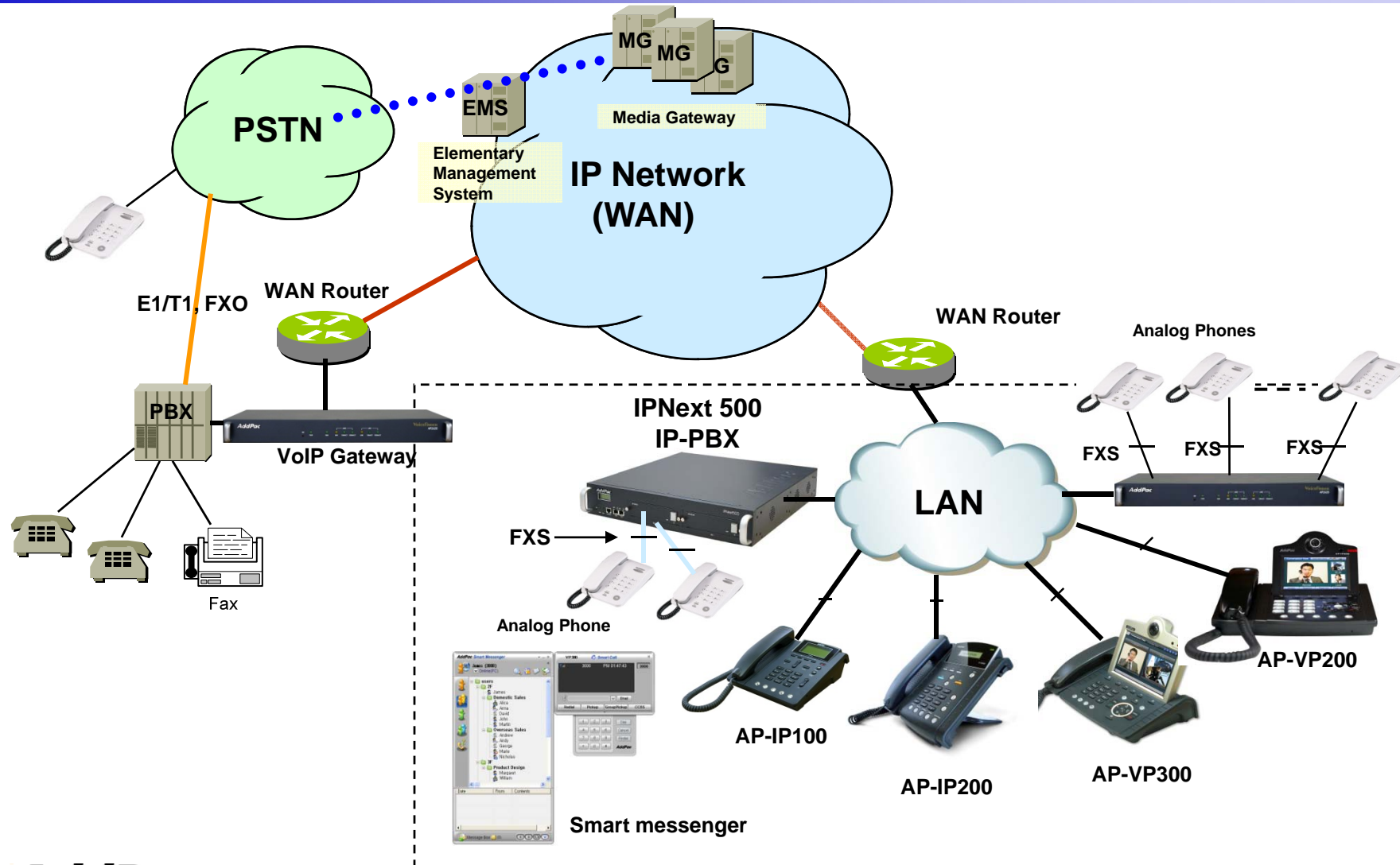
AP-IP100 IP Phone

Application Area

- IP-PBX IP Phone Terminal (SIP, H.323, etc)
- IP Phone + FXO VoIP Gateway : AP-IP100E
- IP Phone + FXS VoIP Gateway : AP-IP100B
- Audio/Video Real-time Broadcasting
- Audio Conference

Standard IP-PBX Application

AP-IP100 IP Phone

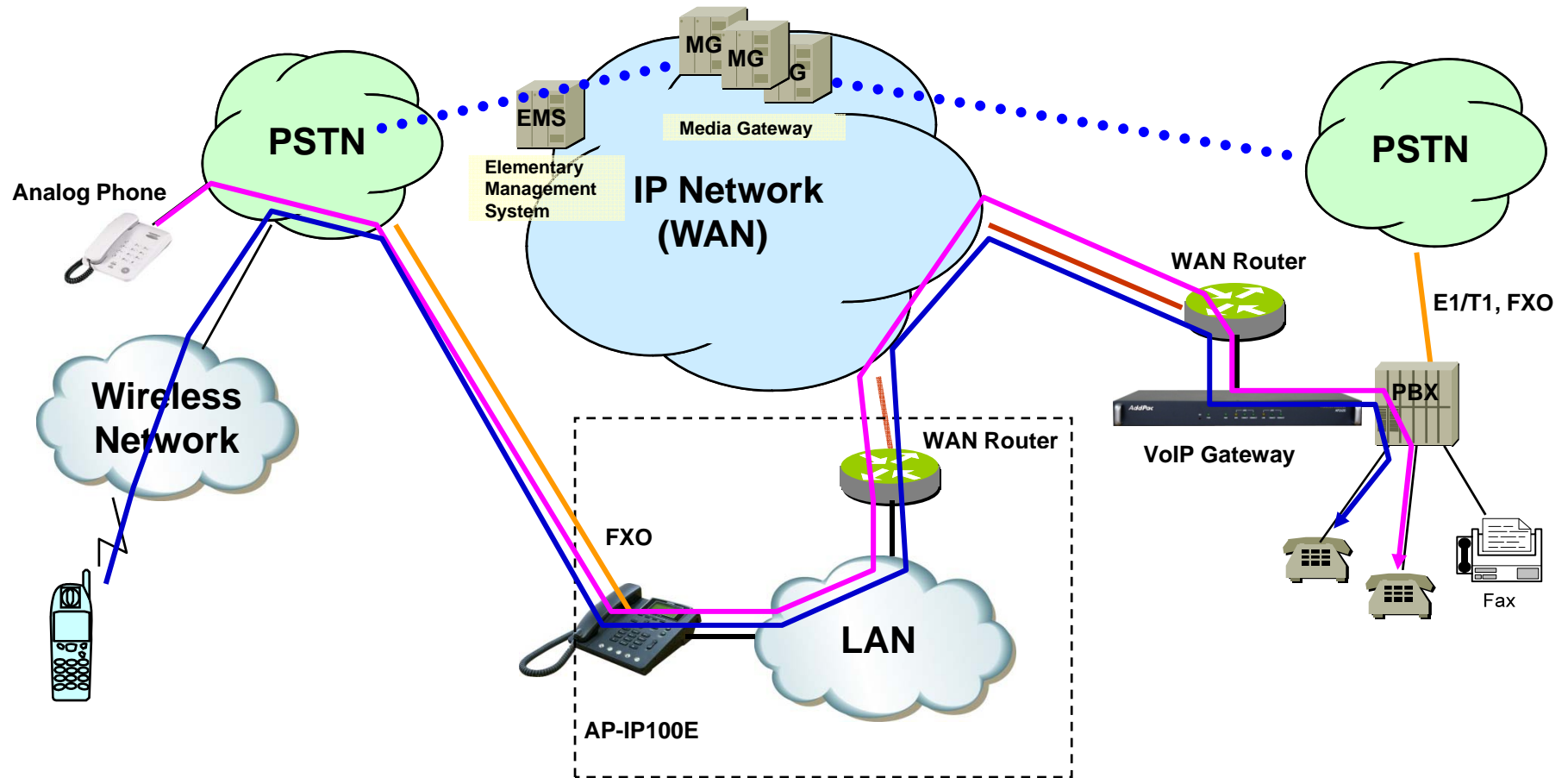


AddPac

www.addpac.com

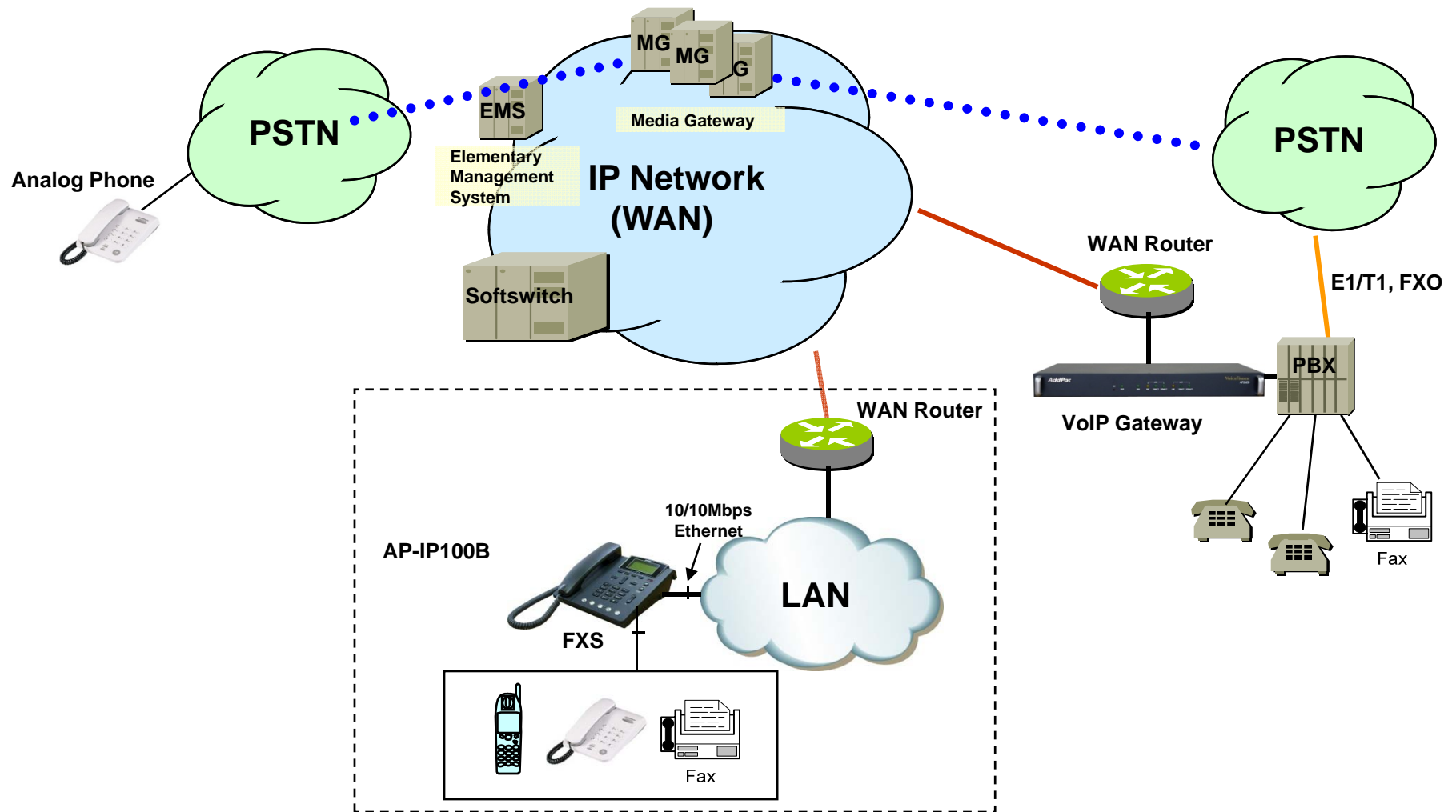
IP Phone + FXO Gateway Application

AP-IP100 IP Phone



IP Phone + FXS Gateway Application

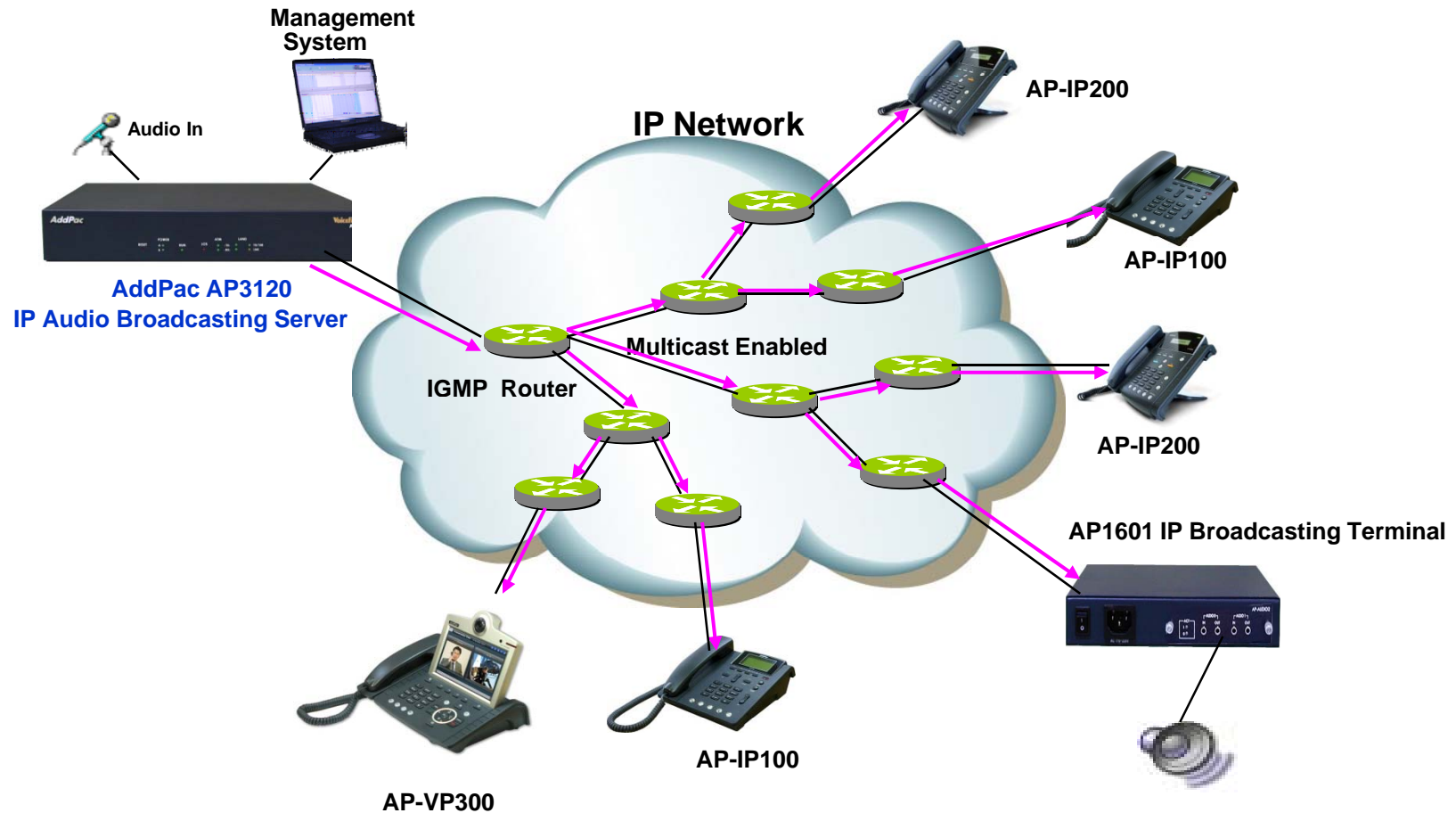
AP-IP100 IP Phone



Audio Real-time Broadcasting

AP-IP100 IP Phone

**IP based Audio Broadcasting Service via
Multicasting IP Network**
(Video, Audio/Voice, and more...)

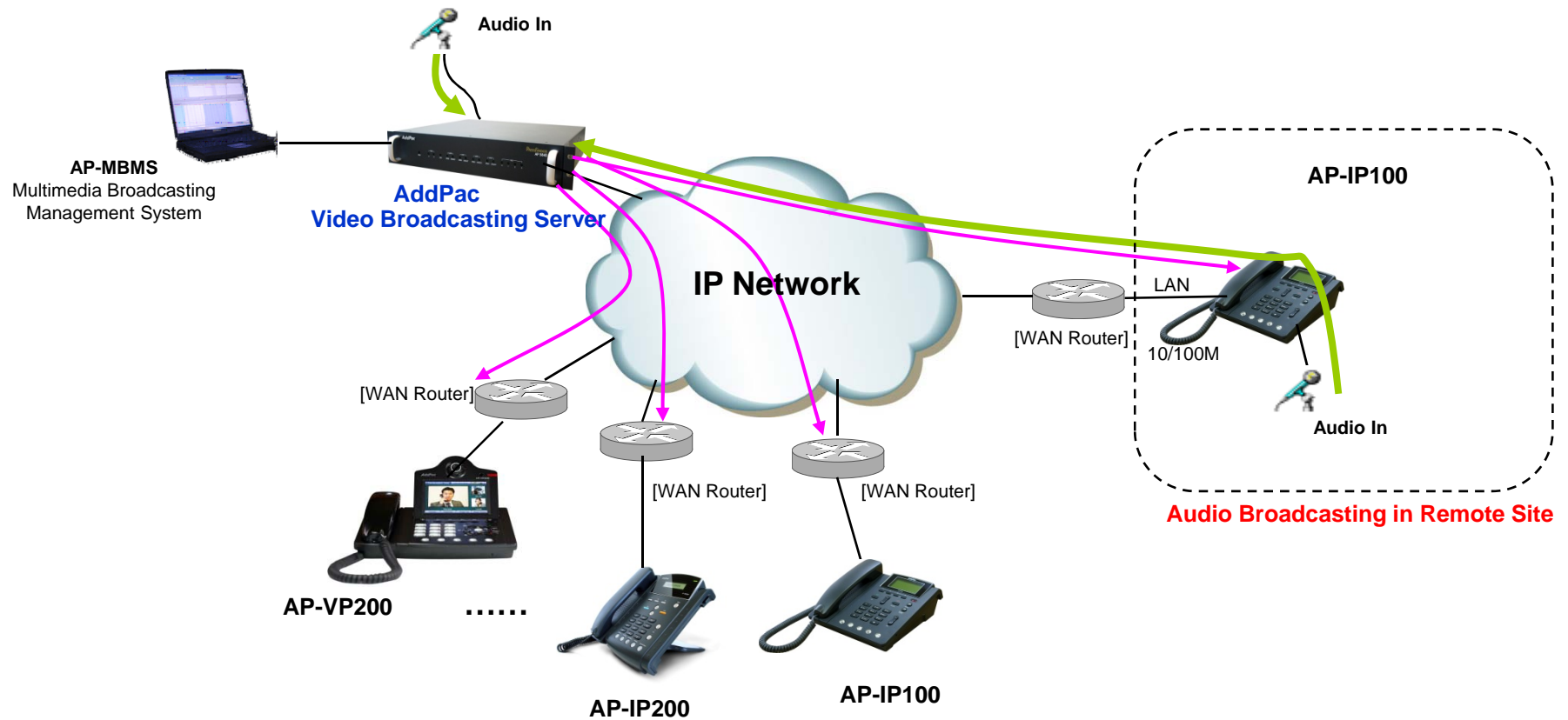


Audio Real-time Broadcasting

AP-IP100 IP Phone

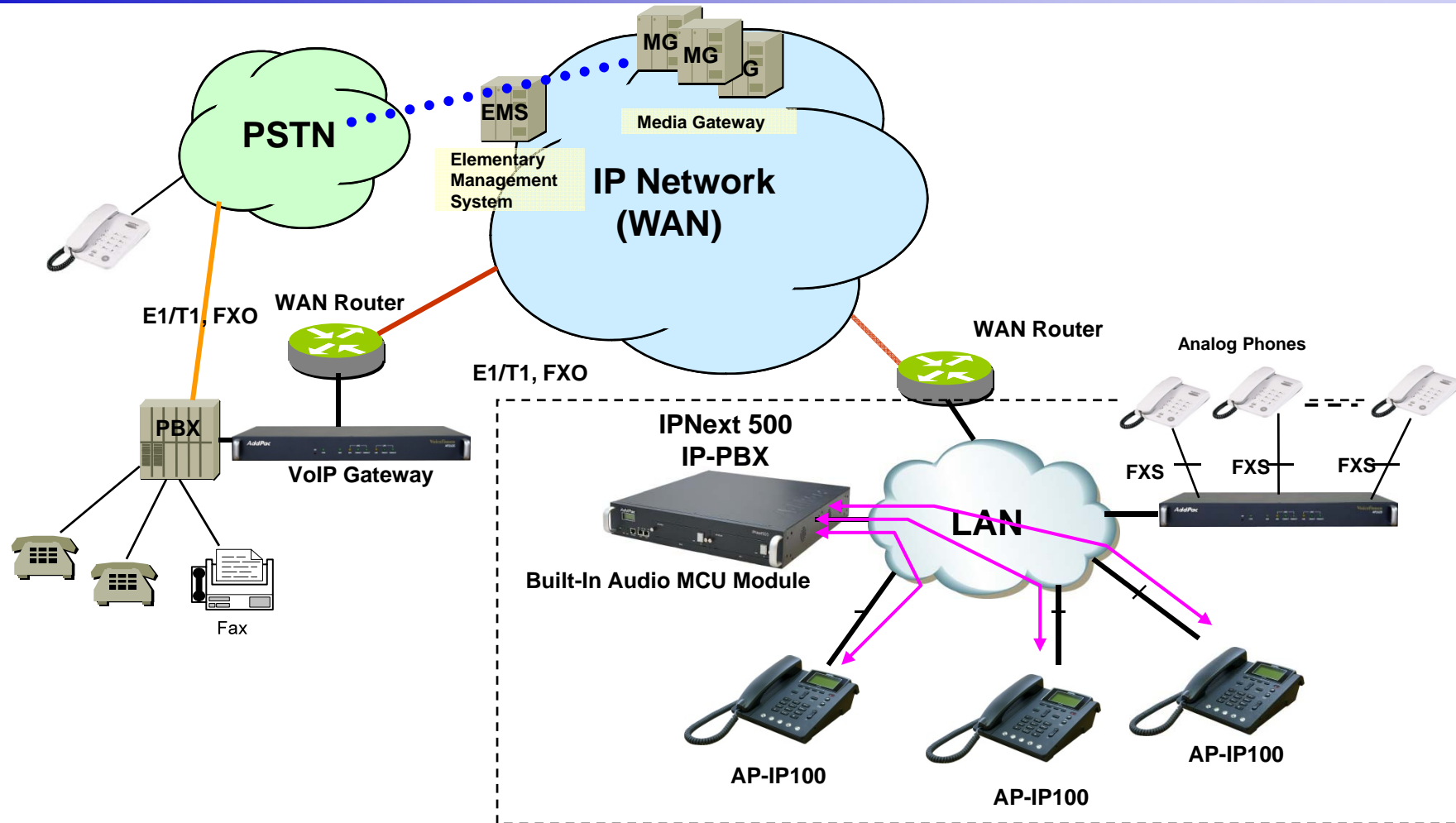
Remote Site Audio and Video Broadcasting Service (Video, Audio/Voice, and more...)

Audio Broadcasting in HQ or Center



Audio Conferencing (IPNext Built-In Audio MCU)

AP-IP100 IP Phone



Ordering Information

- **AP-IP100 IP Phone Hardware**
 - AP-IP100 IP Phone Main Body
 - RISC Microprocessor with Embedded DSP Architecture
 - LCD, Function KEY, Menu KEY
 - External 3.5mm Audio Input/Output
 - 2-ports 10/100Mbps Fast Ethernet
 - Optional FXO Interface Port for PSTN Backup
 - Optional FXS Interface Port for Wireless Analog Phone, FAX, etc
 - Option : PoE
 - Including Network Cable Set & Ext. Power Supply, etc.
- **Built-in APOS Internetworking Software for AP-IP100**
- **Including 1 Year Hardware Warranty**
- **Product Documents**
 - Install and Operation Guide (PDF)
- **Pricing**
 - AddPac Technology Regional Sales Manager
 - Authorized Sales and Marketing Representatives



Thank you!

AddPac Technology Co., Ltd.
Sales and Marketing

Phone +82.2.568.3848 (KOREA)

FAX +82.2.568.3847 (KOREA)

E-mail sales@addpac.com