



# AP-VC2000™

## Video Conference Equipment

High Performance BcN Video Terminal Solution  
(BcN : Broadband Convergence Network)

## Wireless LAN Features



USB WiFi LAN

**AddPac**

AddPac Technology

2006, Sales and Marketing

[www.addpac.com](http://www.addpac.com)

# Contents

- AP-VC2000 H/W Specification
- Wireless LAN Specification
- BSS/IBSS Network Diagram
- Performance Estimation



# H/W Specification

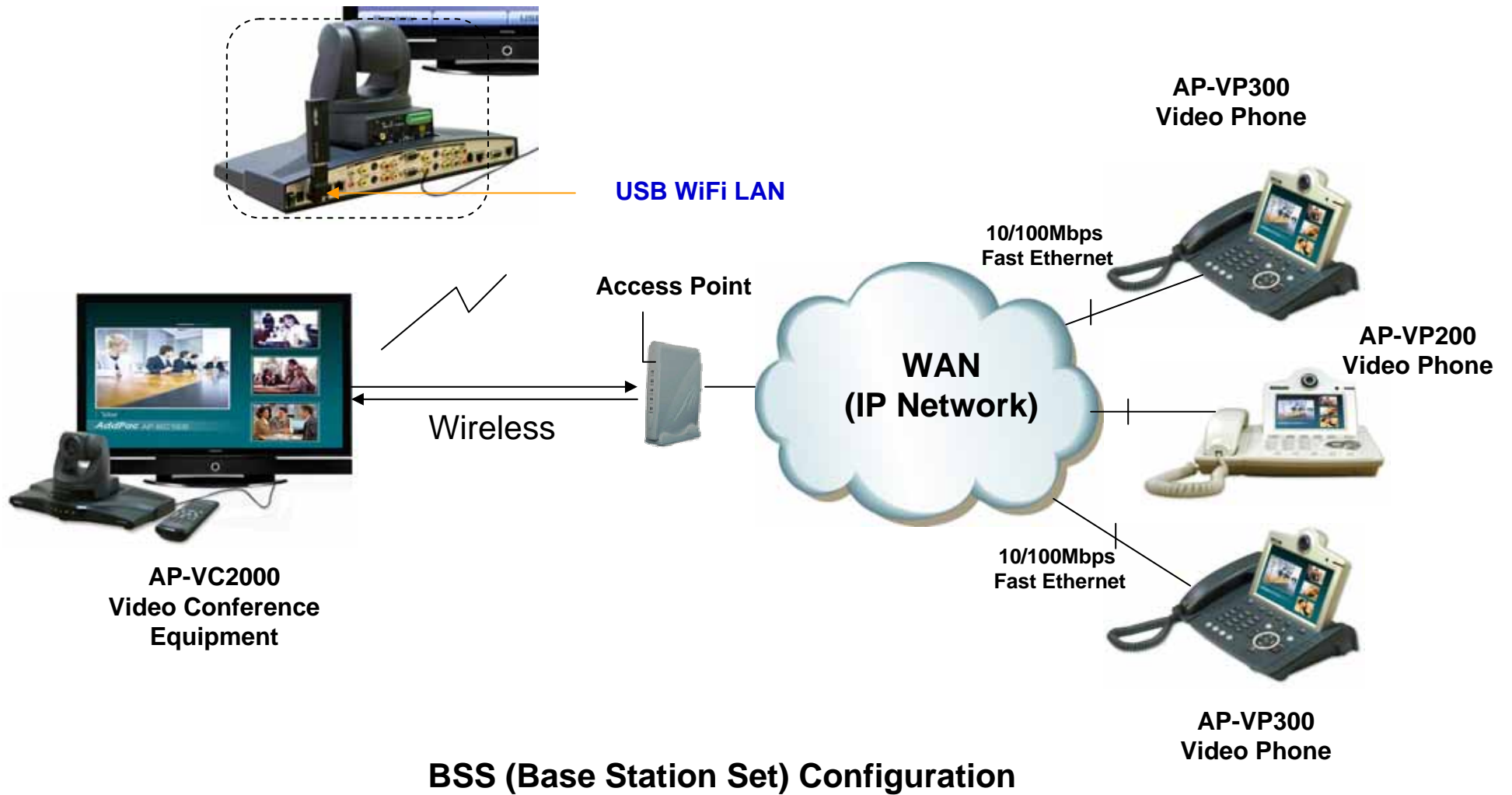
- **RISC Microprocessor Computing Power**
- **High-end Programmable DSP Hardware Architecture**
- **External Powerful Audio/Video Interface (CH#1)**
  - Composite RCA Out, S-Video Out, Component Out
  - Composite RCA Input, S-Video Input
  - Camera PAN/TILT/ZOOM via RJ45 RS-232C Interface
  - Stereo Audio Input Connector (3.5mm)
  - Stereo RCA Type Audio Output Connector (Left, Right)
- **External Powerful Audio/Video Interface (CH#2)**
  - Composite RCA Out, S-Video Out, Component Out, D-sub 15pin VGA Out
  - Composite RCA Input, S-Video Input, D-sub 15pin VGA Input
  - Camera PAN/TILT/ZOOM via DB-9 RS-232C/RS422 Interface
  - Stereo Audio Input Connector (3.5mm)
  - Stereo RCA Type Audio Output Connector (Left, Right)
- **Internal MIC/Speaker**
- **Network Interface**
  - Two(2) 10/100Mbps Fast Ethernet (RJ45)
  - One(1) RS-232C Interface (RJ45) for Console
- **USB Interface**
  - USB 1.1 Master Interface for USB Wifi, HDD, Flash Memory,
- **VoIP Gateway**
  - 1-Port FXS VoIP Interface for Analog Phone, Wireless Phone



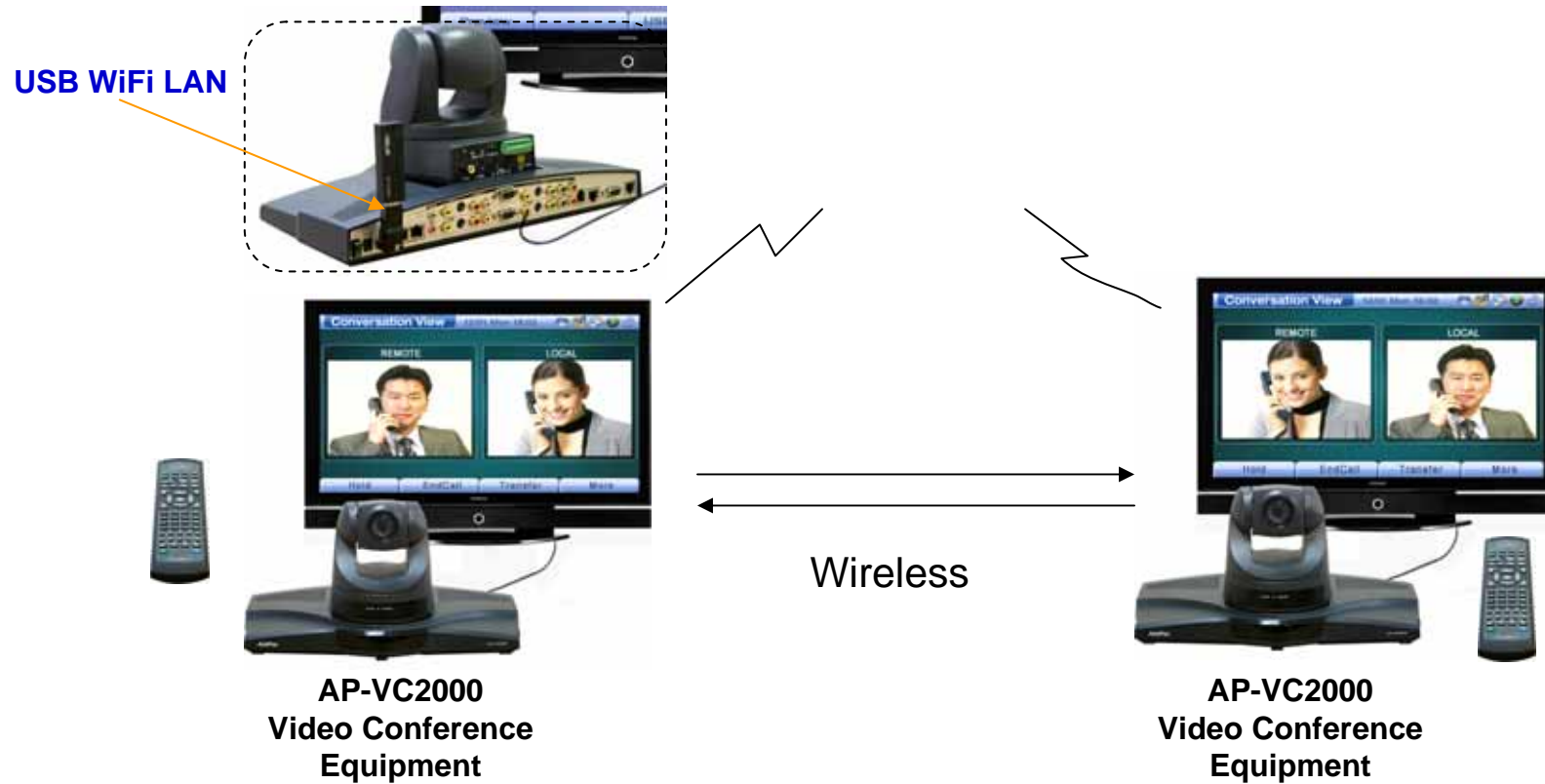
# Wireless LAN Specification

- **IEEE 802.11b/g Support**
  - BSS(Base Service Set. Infra-structure)
  - IBSS(Independent BSS. ad-hoc)
  - Authentication/Security Mode
    - Current : Open/None, Open/WEP(40B/104B)
    - Developing : WPAPSK/AES
- **Chipset Support**
  - Chipset : ralinktech RT2570 USB
  - USB Devices : ASUS WL-167g, D-Link DWL-G122

# BSS Network Diagram



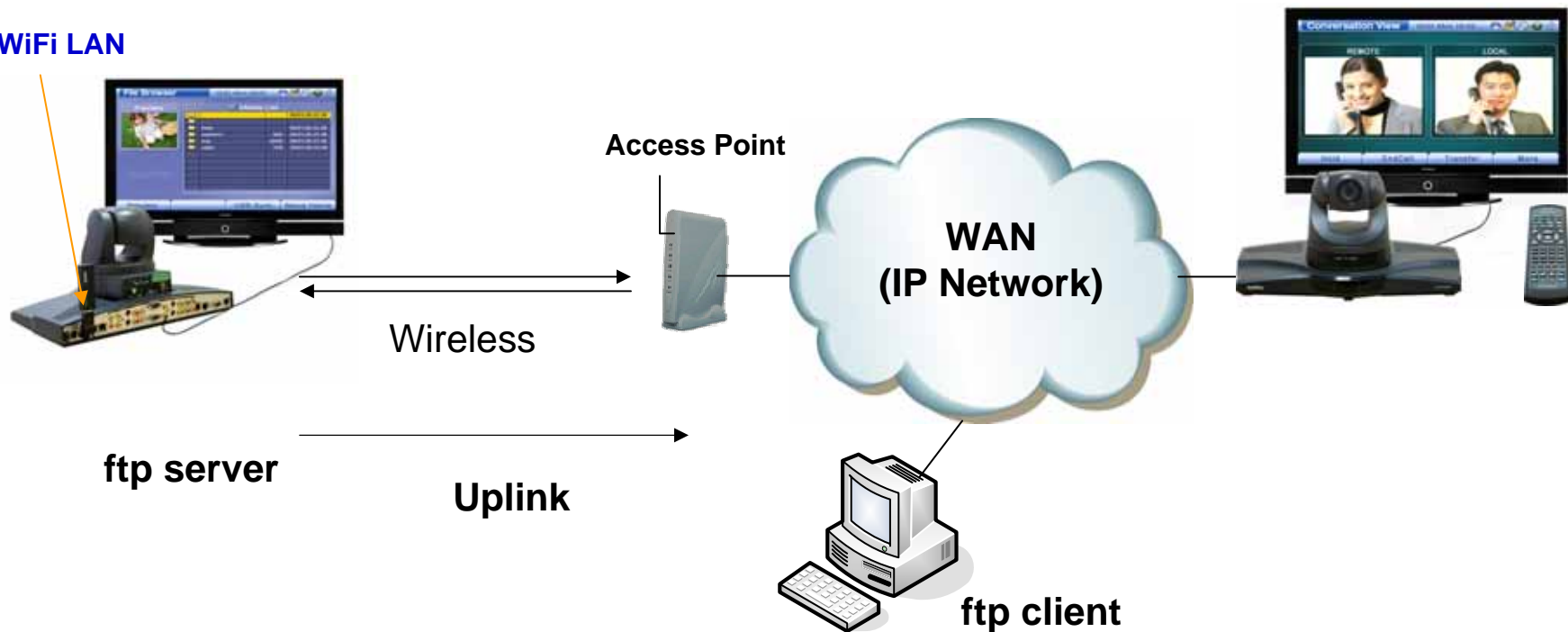
# IBSS Network Diagram



**IBSS (Independent Base Station Set) Configuration**

# Performance Estimation

USB WiFi LAN



Video Communication : bidirectional 2Mbps

Data throughput : ftp get 330 ~ 450kB/s, put 330kB/s



# Thank you!

**AddPac Technology Co., Ltd.**  
Sales and Marketing

Phone +82.2.568.3848 (KOREA)

FAX +82.2.568.3847 (KOREA)

E-mail [sales@addpac.com](mailto:sales@addpac.com)