

AP-VC200™

Video Conference Equipment

High Performance BcN Video Terminal Solution

BcN : Broadband Convergence Network

Wireless LAN Features



AddPac

AddPac Technology

Sales and Marketing

USB WiFi LAN

www.addpac.com

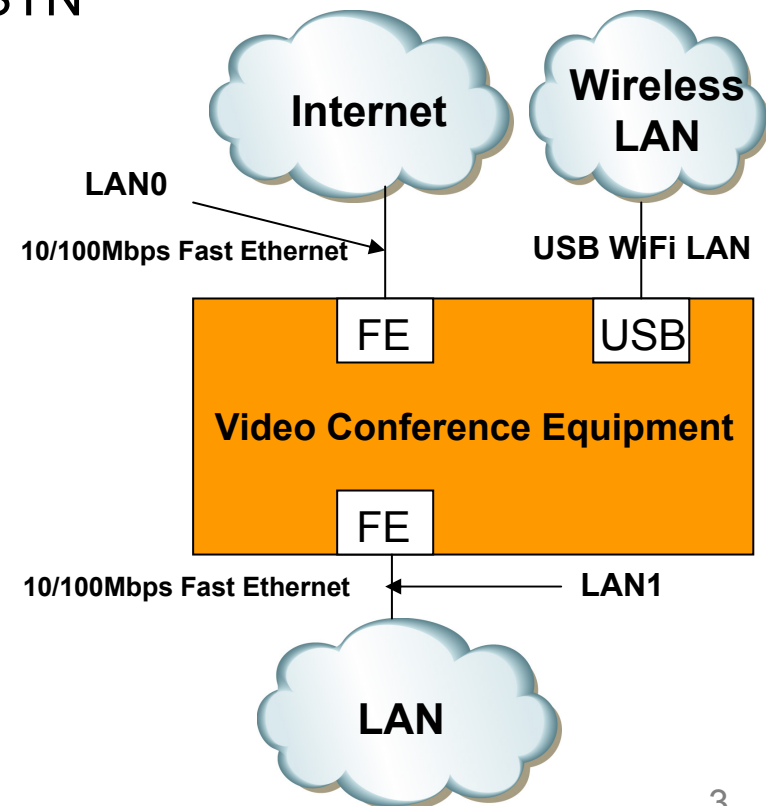
Contents

- AP-VC200 H/W Specification
- Wireless LAN Specification
- BSS/IBSS Network Diagram
- Performance Estimation



AP-VC200 H/W Specification

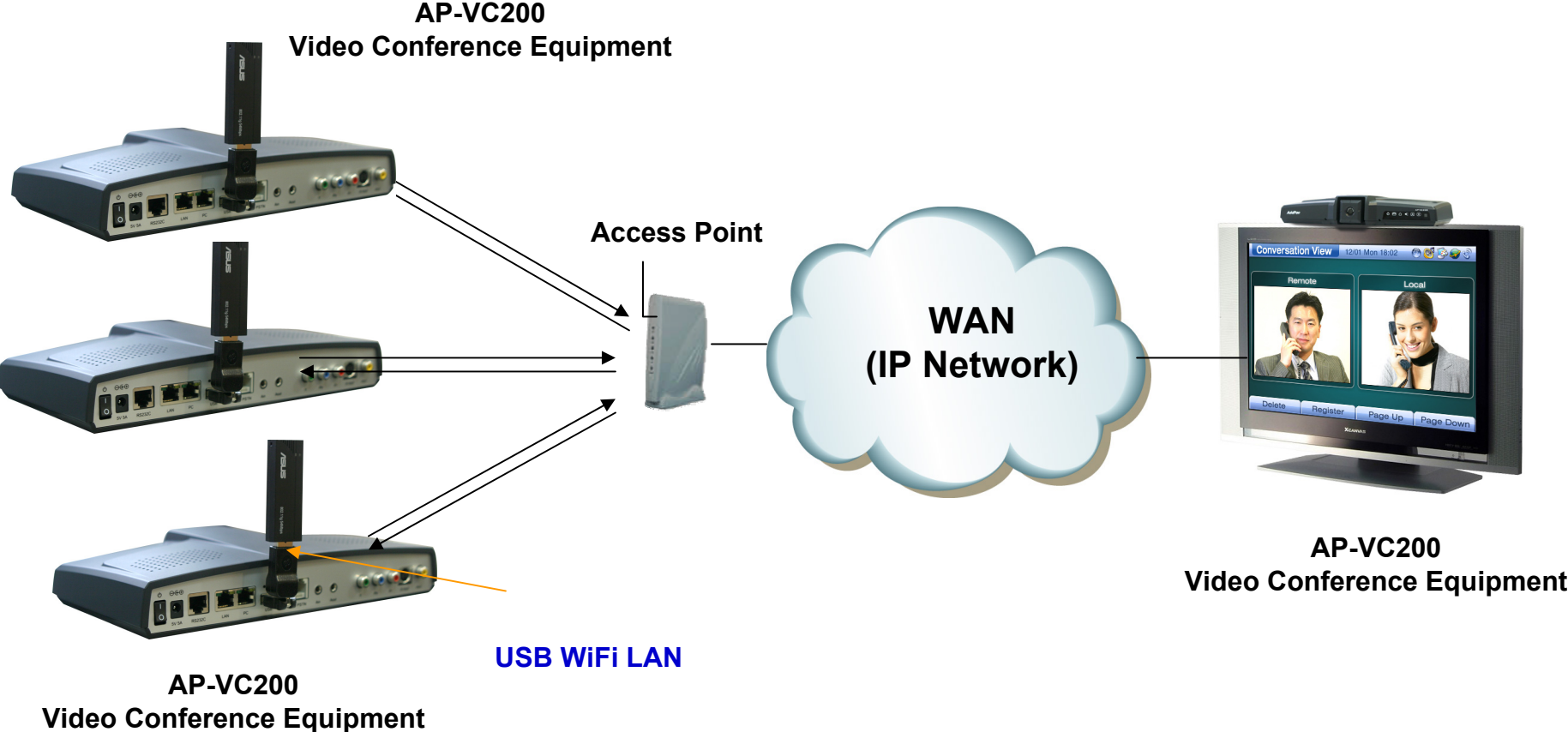
- **RISC+DSP (Audio Codec) Microprocessor Computing Power(Dual Processor Architecture)**
- **Powerful DSP for Video Signal Processing**
- **Built-in Camera, MIC, Speaker**
- FXS, FXO Interface for Analog Phone, PSTN
- **High quality Audio and Video Interface**
 - RCA, S-Video, Component Video Out
 - 3.5mm Audio In/Out
- **USB 1.1 Host Mode Interface**
- **Network Interface**
 - Two(2) 10/100Mbps Fast Ethernet
 - One(1) RS-232C Console(RJ45)
- **Power Supply**
 - External Power Adaptor (5V, 5A)



Wireless LAN Specification

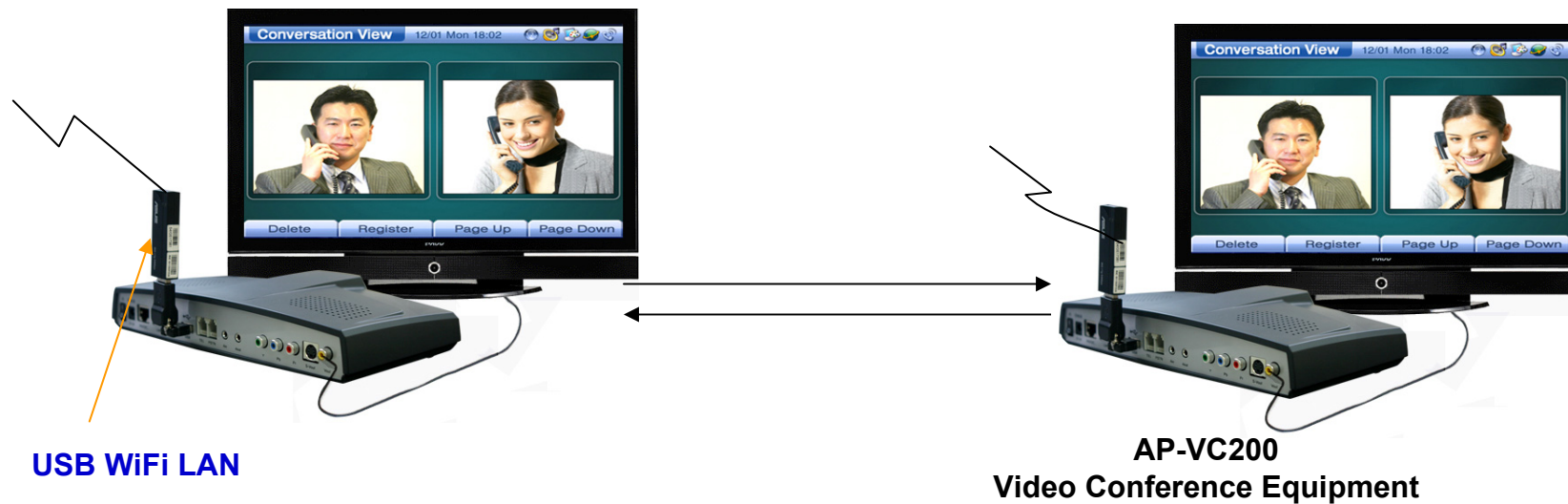
- IEEE 802.11b/g Support
 - BSS(Base Service Set. Infra-structure)
 - IBSS(Independent BSS. ad-hoc)
 - Authentication/Security Mode
 - Current : Open/None, Open/WEP(40B/104B)
 - Developing : WPAPSK/AES
- Chipset Support
 - Chipset : ralinktech RT2570 USB
 - USB Devices : ASUS WL-167g, D-Link DWL-G122

BSS Network Diagram



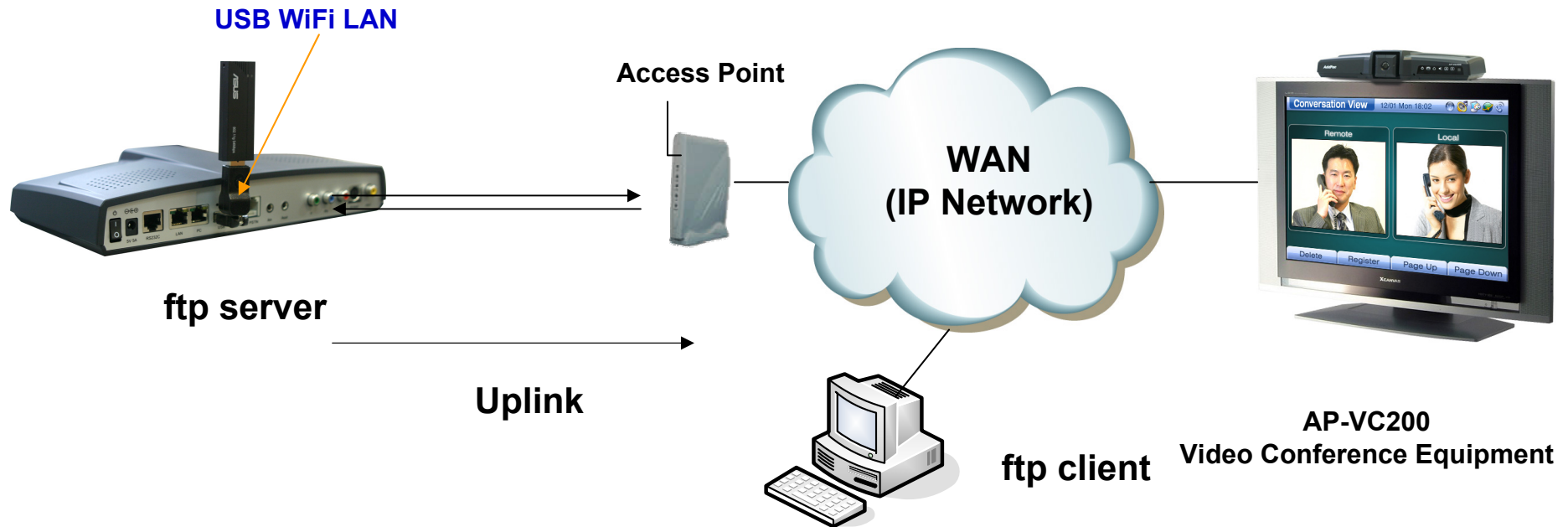
BSS (Base Station Set) Configuration

IBSS Network Diagram



IBSS (Independent Base Station Set) Configuration

Performance Estimation



Video Communication : bidirectional 2Mbps

Data throughput : ftp get 330 ~ 450kB/s, put 330kB/s



Thank you!

AddPac Technology Co., Ltd.
Sales and Marketing

Phone +82.2.568.3848 (KOREA)

FAX +82.2.568.3847 (KOREA)

E-mail sales@addpac.com