

# IP Video Conference Solution



**AddPac**

**AddPac Technology**

2011, Sales and Marketing

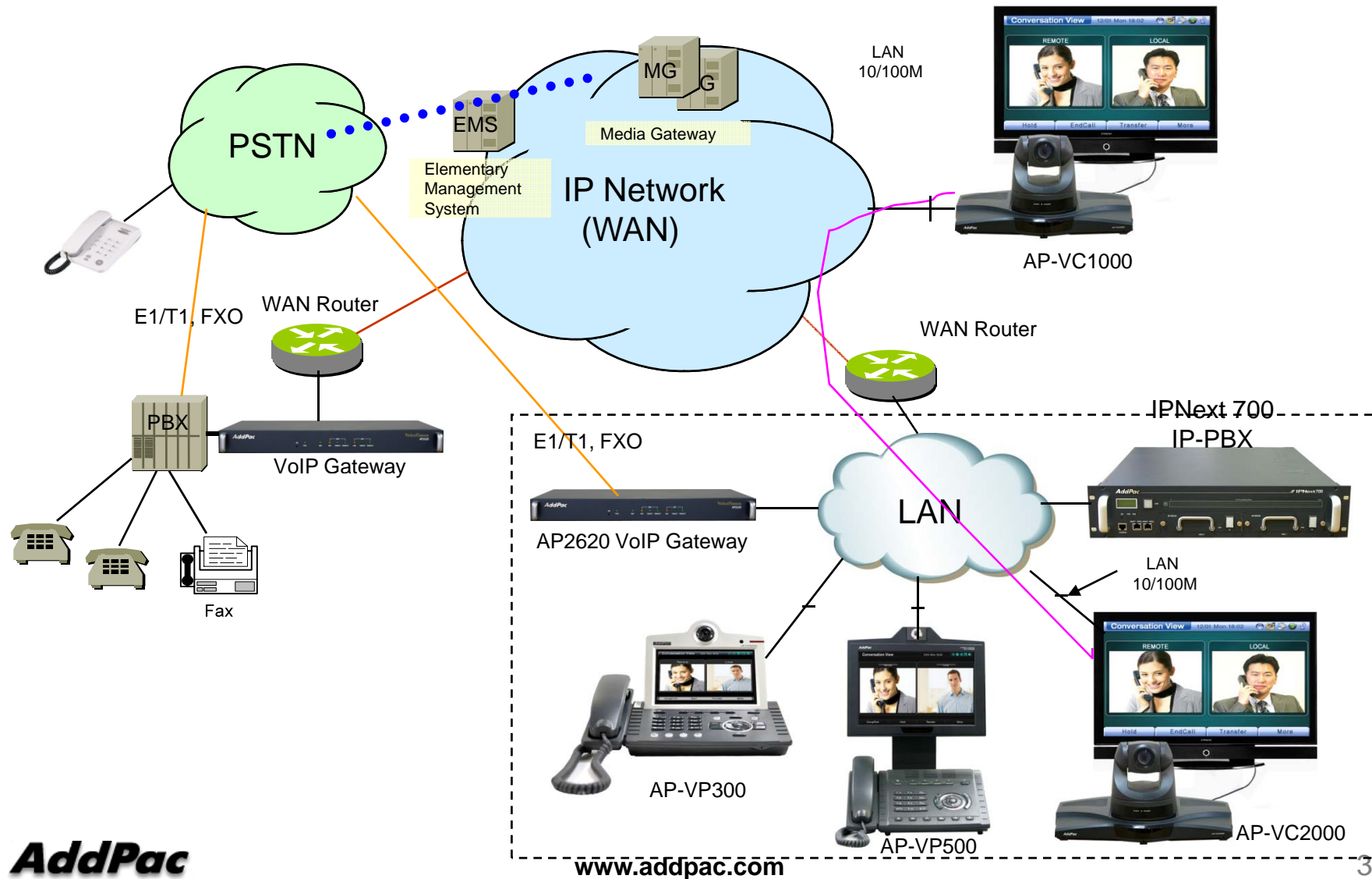
[www.addpac.com](http://www.addpac.com)

# Contents

- IP Video Conference Service Diagram
- IP Video Conference Equipment Comparison Table
- IP Video Conference Equipment Series
  - AP-VC2000 (2 Channel, 4-Party MCU)
  - AP-VC1000 (1 Channel)
  - AP-VC200




# IP Video Conference Service Diagram



# IP Video Conference Equipment Comparison Table

| Model            | AP-VC2000   | AP-VC1000   | AP-VC200  |
|------------------|---|---|---|
| Specification    |  |  |  |
| Audio/Video Port | Two(2) Channel  | One(1) Channel  | One(1) Channel  |
| Camera           | External  | External  | Internal CCD  |
| Video Codec      | H.263<br>MPEG4<br>H.264   | H.263<br>MPEG4<br>H.264   | H.263<br>MPEG4<br>H.264   |
| Video Resolution | SD  | SD  | SD  |
| Signaling        | H.323/SIP   | H.323/SIP   | H.323/SIP   |
| Video MCU        | 4-Party Video MCU   | N/A   | N/A   |
| PSTN Interface   | 1-Port FXS  | 1-Port FXS  | 1-Port FXS, 1-Port FXO  |
| LAN Port         | 2   | 2   | 2   |
| Console Port     | 1   | 1   | 1   |
| Power            | External Power Adaptor  | External Power Adaptor  | External Power Adaptor  |



# AP-VC2000

## Video Conference Equipment

# Video Conference

## AP-VC2000 IP Video Conference Equipment

### Main Features

- Two(2) Channel SD Level Video Conference Equipment
- One(1) is for Camera, the other is for Document PC
- HD (720P) Display Support for HDTV
- Internal 4-Party MCU support
- H.323/SIP Concurrent Stack Embedded
- High Performance RISC & Programmable DSP Architecture
- Two(2) 10/100Mbps Fast Ethernet (IP Share ,etc)
- High-performance Video Codec Support
  - H.263, MPEG-4, and H.264
- G.711/G.726/G.723/G.729, etc
- Powerful Network Protocols (PPPoE, DHCP, Static Routing, etc)
- Firmware Upgradeable Architecture
- VPMS (VoIP Plug&Play Management System) for Large Scale Deployment
- Advanced Voice QoS Mechanism

# Video Conference

## AP-VC2000 IP Video Conference Equipment

RISC  
CPU

High-end  
DSP

### Hardware Specification

- RISC Microprocessor Computing Power
- High-end Programmable DSP Hardware Architecture
- External Powerful Audio/Video Interface (CH#1)
  - Composite RCA Out, S-Video Out, Component Out
  - Composite RCA Input, S-Video Input
  - Camera PAN/TILT/ZOOM via RJ45 RS-232C Interface
  - Stereo Audio Input Connector (3.5mm)
  - Stereo RCA Type Audio Output Connector (Left, Right)
- External Powerful Audio/Video Interface (CH#2)
  - Composite RCA Out, S-Video Out, Component Out, **D-sub 15pin VGA Out**
  - Composite RCA Input, S-Video Input, **D-sub 15pin VGA Input**
  - Camera PAN/TILT/ZOOM via DB-9 RS-232C/RS422 Interface
  - Stereo Audio Input Connector (3.5mm)
  - Stereo RCA Type Audio Output Connector (Left, Right)
- Internal MIC/Speaker
- Network Interface
  - Two(2) 10/100Mbps Fast Ethernet (RJ45)
  - One(1) RS-232C Interface (RJ45) for Console
- USB Interface
  - USB 1.1 Master Interface for USB Wifi, HDD, Flash Memory,
- VoIP Gateway
  - 1-Port FXS VoIP Interface for Analog Phone, Wireless Phone

# Video Conference

AP-VC2000 IP Video Conference Equipment

RISC  
CPU

High-end  
DSP

## Hardware Specification





# Video Conference

AP-VC2000 IP Video Conference Equipment

RISC  
CPU

High-end  
DSP

## Hardware Specification



1.3.5mm Audio Input (CH1)

2.RCA Video Input (CH1)

3.S-Video Input (CH1)

4.RCA Audio Output L (CH1)

5.RCA Audio Output R (CH1)

6.D-sub Video Output (CH1)

7.RCA Video Output (CH1)

8.S-Video Output (CH1)

9.Component Y OUT (CH1)

10.Component Pb OUT (CH1)

11.Component Pr OUT (CH1)

12.Power ON/OFF Switch

13.External Power Input (DC5V)

14.USB Interface (Host Mode)

15.10/100Mbps Ethernet 0

16.10/100Mbps Ethernet 1

17.3.5mm Audio Input (CH0)

18..RCA Video Input (CH0)

19.S-Video Input (CH0)

20.RCA Audio Output L (CH0)

21.RCA Audio Output R (CH0)

22.D-sub Video Input (CH1)

23.RCA Video Output (CH0)

24.S-Video Output (CH0)

25.Component Y OUT (CH0)

26.Component Pb OUT (CH0)

27.Component Pr OUT (CH0)

28.FXS Voice Port

29.Console 1 (RJ-45) for PTZ

30.Console 2 (D-sub) for PTZ

31.Console for CLI

**AddPac**

[www.addpac.com](http://www.addpac.com)



# AP-VC1000

## Video Conference Equipment

# Video Conference

## AP-VC1000 IP Video Conference Equipment

### Main Features

- One(1) Channel SD Level Video Conference Equipment
- HD (720P) Display Support for HDTV
- H.323/SIP Concurrent Stack Embedded
- Dual Monitor Emulation
- Document Sharing with PC Software
- High Performance RISC & Programmable DSP Architecture
- Two(2) 10/100Mbps Fast Ethernet (IP Share ,etc)
- High-performance Video Codec Support
  - H.263, MPEG-4, and H.264
- G.711/G.726/G.723/G.729, etc
- Powerful Network Protocols (PPPoE, DHCP, Static Routing, etc)
- Firmware Upgradeable Architecture
- VPMS (VoIP Plug&Play Management System) for Large Scale Deployment
- Advanced Voice QoS Mechanism

# Video Conference

AP-VC1000 IP Video Conference Equipment

RISC  
CPU

High-end  
DSP

## Hardware Specification

- RISC Microprocessor Computing Power
- High-end Programmable DSP Hardware Architecture
- External Powerful Audio/Video Interface
  - Composite RCA Out, S-Video Out, Component Out, RGB Out
  - Composite RCA Input, S-Video Input
  - Camera PAN/TILT/ZOOM via DB-9 RS-232C Interface
  - Stereo Audio Input Connector (3.5mm)
  - Stereo RCA Type Audio Output Connector (Left, Right)
- Internal MIC/Speaker
- Network Interface
  - Two(2) 10/100Mbps Fast Ethernet (RJ45)
  - One(1) RS-232C Interface (RJ45) for Console
- USB Interface
  - USB 1.1 Master Interface for USB Wifi, HDD, Flash Memory,
- VoIP Gateway
  - 1-Port FXS VoIP Interface for Analog Phone, Wireless Phone

# Video Conference

AP-VC1000 IP Video Conference Equipment

RISC  
CPU

High-end  
DSP

## Hardware Specification




- 1. Power ON/OFF Switch
- 2. External Power Input (DC5V)
- 3. USB Interface (Host Mode)
- 4. 10/100Mbps Ethernet 0
- 5. 10/100Mbps Ethernet 1

- 6. 3.5mm Audio Input
- 7. RCA Video Input
- 8. S-Video Input
- 9. RCA Audio Output L
- 10. RCA Audio Output R

- 11. RGB Video Output
- 12. RCA Video Output
- 13. S-Video Output
- 14. Component Y OUT
- 15. Component Pb OUT

- 16. Component Pr OUT
- 17. FXS Voice Port
- 18. RS-232C 1 (RJ-45)
- 19. RS-232C 2 (D-sub)
- 20. Console(RS-232C)



# AP-VC200

## Video Conference Equipment

# Video Conference

## AP-VC200 IP Video Conference Equipment

### Main Features

- One(1) Channel SD Level Video Conference Equipment
- HD (720P) Display Support for HDTV
- H.323/SIP Concurrent Stack Embedded
- Built-in CCD Camera
- High Performance RISC & Programmable DSP Architecture
- Two(2) 10/100Mbps Fast Ethernet (IP Share ,etc)
- High-performance Video Codec Support
  - H.263, MPEG-4, and H.264
- G.711/G.726/G.723/G.729, etc
- Powerful Network Protocols (PPPoE, DHCP, Static Routing, etc)
- Firmware Upgradeable Architecture
- VPMS (VoIP Plug&Play Management System) for Large Scale Deployment
- Advanced Voice QoS Mechanism

# Video Conference

## AP-VC200 IP Video Conference Equipment

High-end  
DSP

### Hardware Specification

- RISC Microprocessor Computing Power
- High-end Programmable DSP Hardware Architecture
- Powerful Video Interface
  - RCA Output, S-Video Output, Component Output
- High quality Audio and Voice Interface
  - Stereo Audio Input Connector
  - Stereo Audio Output Connector
- Network Interface
  - Two(2) 10/100Mbps Fast Ethernet (RJ45)
  - One(1) RS-232C Interface (RJ45) for Console
- USB Interface
  - USB 1.1 Master Interface for USB Wifi, HDD, Flash Memory, USB Keyboard, USB Mouse
- VoIP Gateway
  - 1-Port FXS VoIP Interface for Analog Phone, Wireless Phone
  - 1-Port FXO VoIP Interface for PSTN Interface





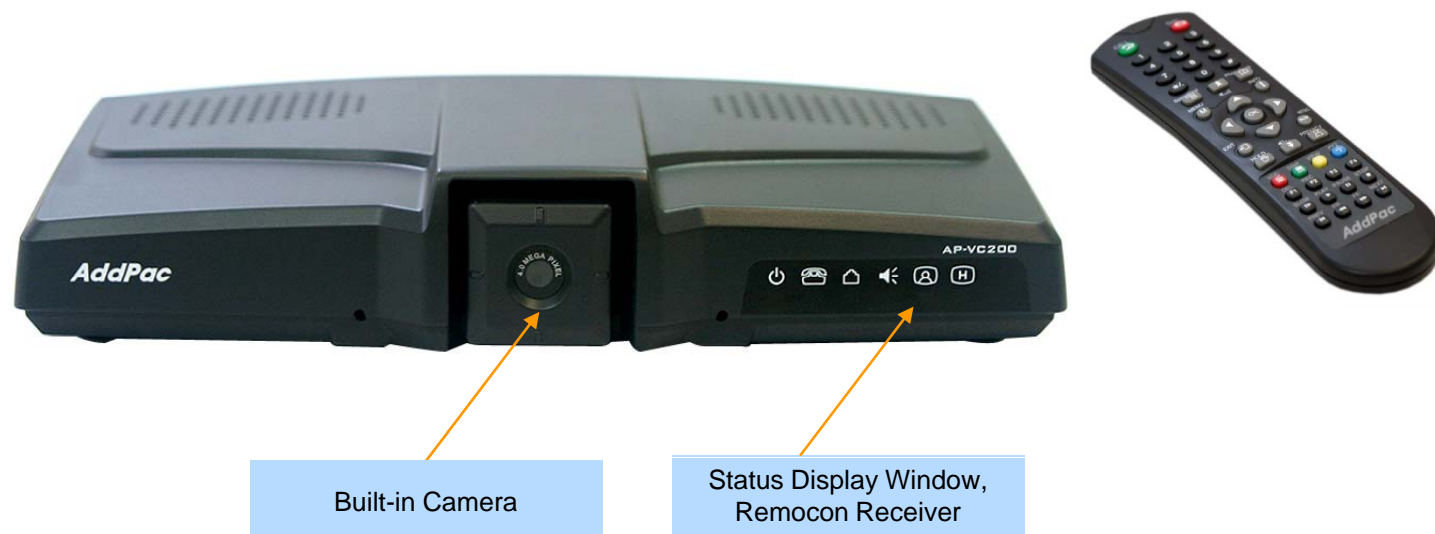
# Video Conference

AP-VC200 IP Video Conference Equipment

RISC  
CPU

High-end  
DSP

## Hardware Specification



# Video Conference

AP-VC200 IP Video Conference Equipment

RISC  
CPU

High-end  
DSP

## Hardware Specification



- 1. Power ON/OFF Switch
- 2. External Power Input (DC5V)
- 3. RS232-C Console (RJ-45)
- 4. 10/100Mbps Ethernet 0 (LAN)
- 5. 10/100Mbps Ethernet 1(PC)

- 6. USB Interface (Host Mode)
- 7. FXS Voice Port for Analog Phone, FAX
- 8. FXO Voice Port for PSTN
- 9. 3.5mm Audio Input
- 10. 3.5mm Audio Output

- 11. Component Y OUT
- 12. Component Pb OUT
- 13. Component Pr OUT
- 14. S-video Output
- 15. RCA Output



# Thank you!

**AddPac Technology Co., Ltd.**  
Sales and Marketing

Phone +82.2.568.3848 (KOREA)

FAX +82.2.568.3847 (KOREA)

E-mail [sales@addpac.com](mailto:sales@addpac.com)