



AP-RS2000

RTP Proxy Server

High Performance RTP Proxy Server Solution

RTP Proxy Server for Private IP Problem Solving



AddPac

AddPac Technology

Sales and Marketing

www.addpac.com

Contents

AP-RS2000 RTP Proxy Server

- Product Overview
- Hardware Specification
- RTP Proxy Configuration
 - Public/Private RTP proxy
 - Asymmetric/Symmetric NAT
 - RTP Broadcast
 - RTP Conference
 - IPv4/IPv6 RTP Proxy
- Signal Flow Diagram
- Ordering Information

Product Overview

AP-RS2000 RTP Proxy Server

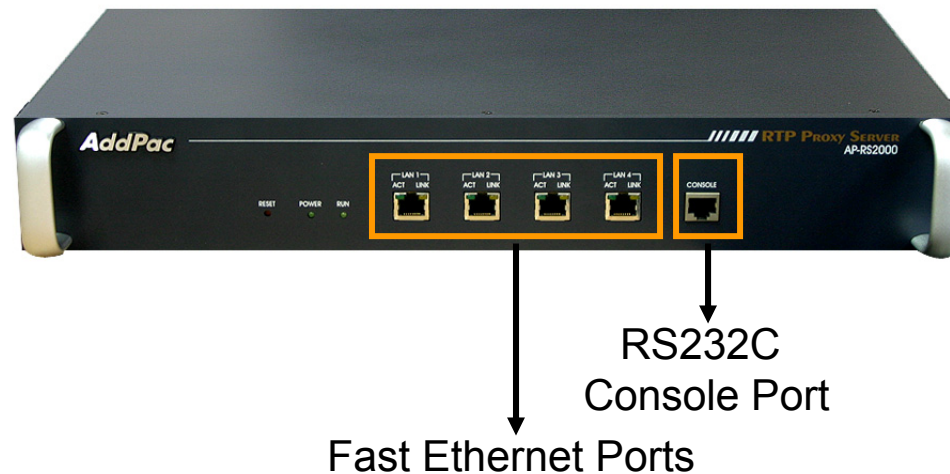
- Protocol Independence (H.323, SIP, MGCP)
- Support RTP Proxy without NAT
- Support Symmetric / Asymmetric NAT
- Support IPv4/IPv6 RTP Proxy
- Support RTP Broadcast
- Support RTP Conference
- High Performance
- Firmware Upgradeable Architecture

Hardware Specification

AP-RS2000 RTP Proxy Server

64bit
CPU

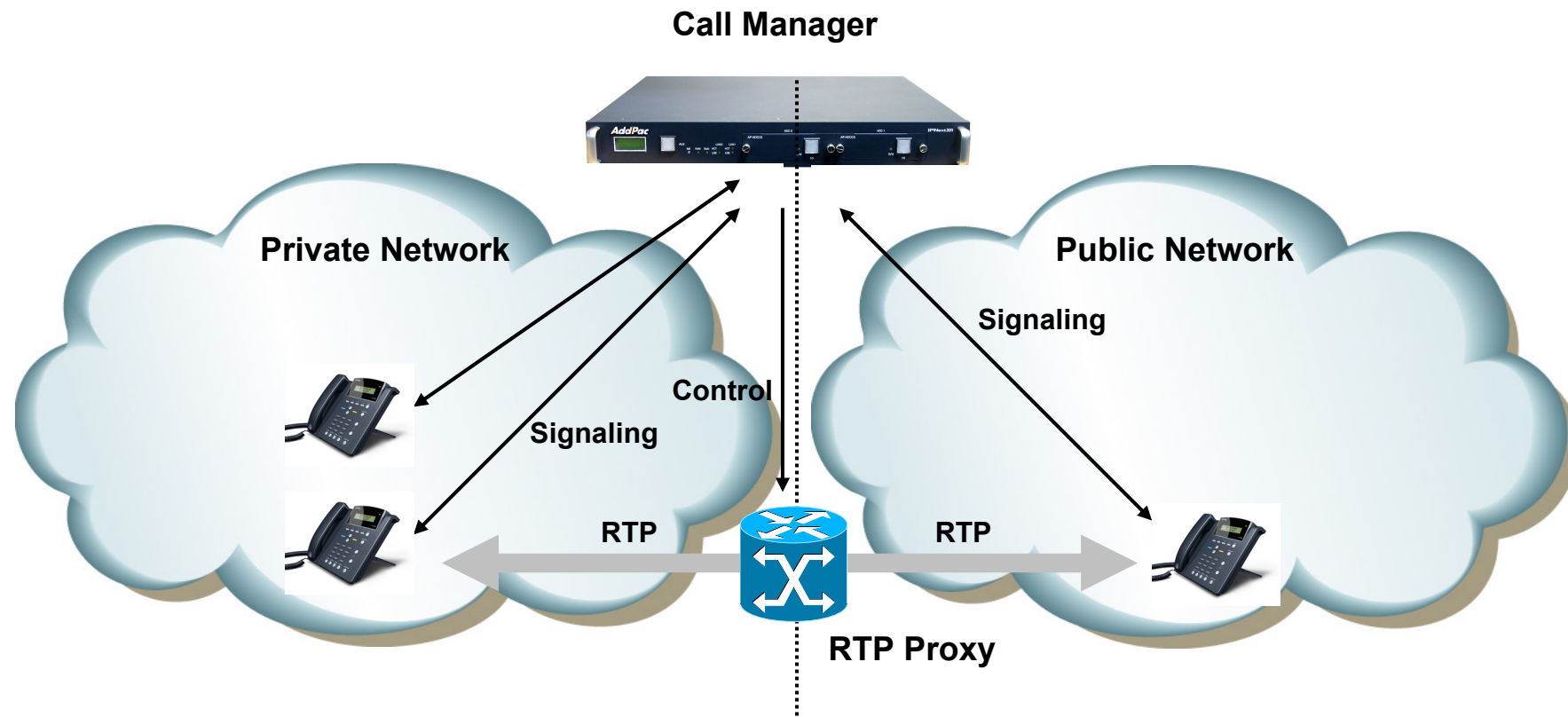
- **RISC Microprocessor Computing Power**
- **Network Interface**
 - Four(4) 10/100Mbps Fast Ethernet
 - One(1) RS-232C Console
- **Memory Interface**
 - Flash Memory : 8Mbyte
 - Main Memory : 128Mbyte High Speed SRAM
 - Boot Loader : 512K Flash Memory



RTP Proxy Configuration

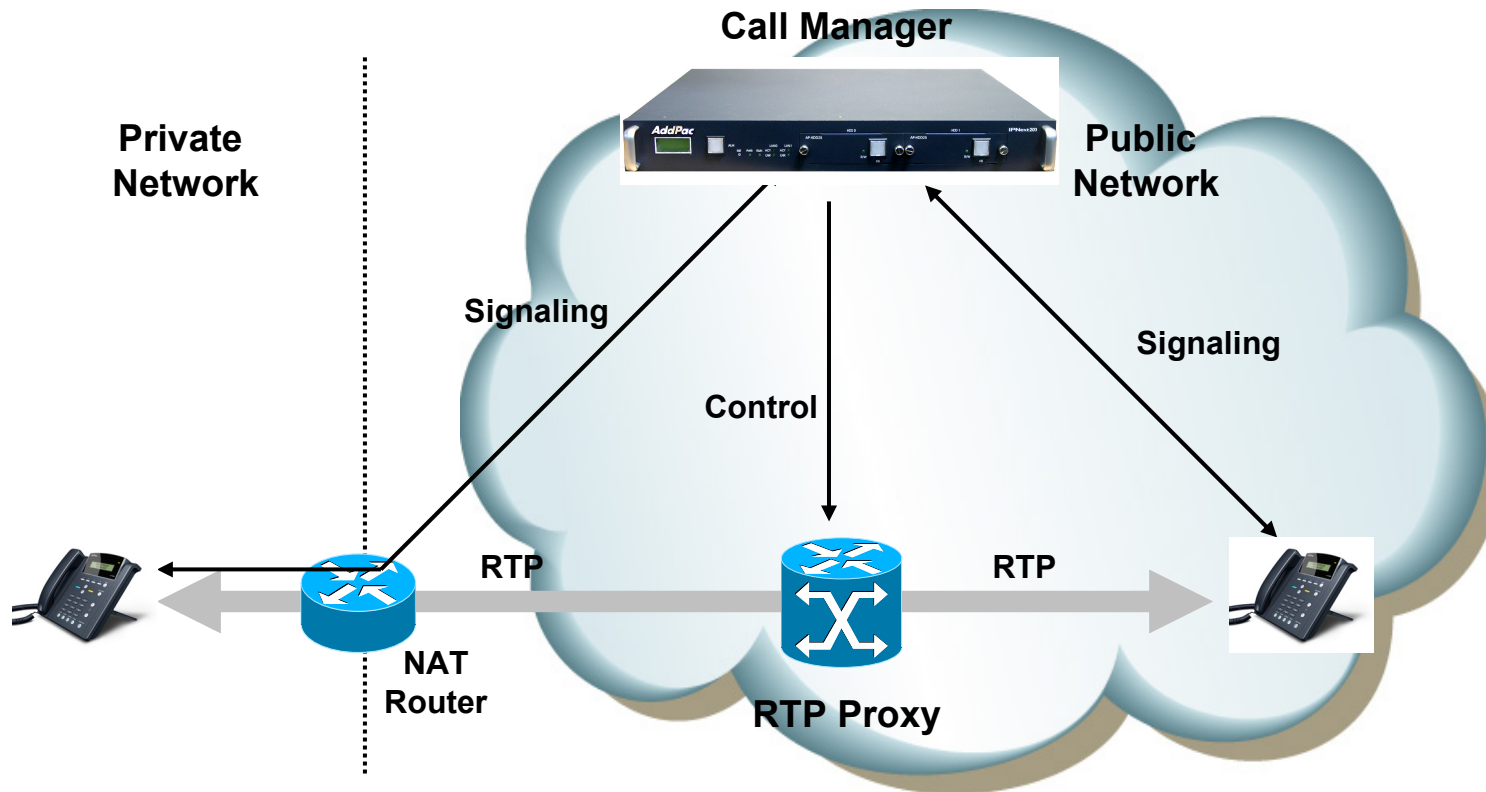


Public/Private RTP Proxy without NAT Router



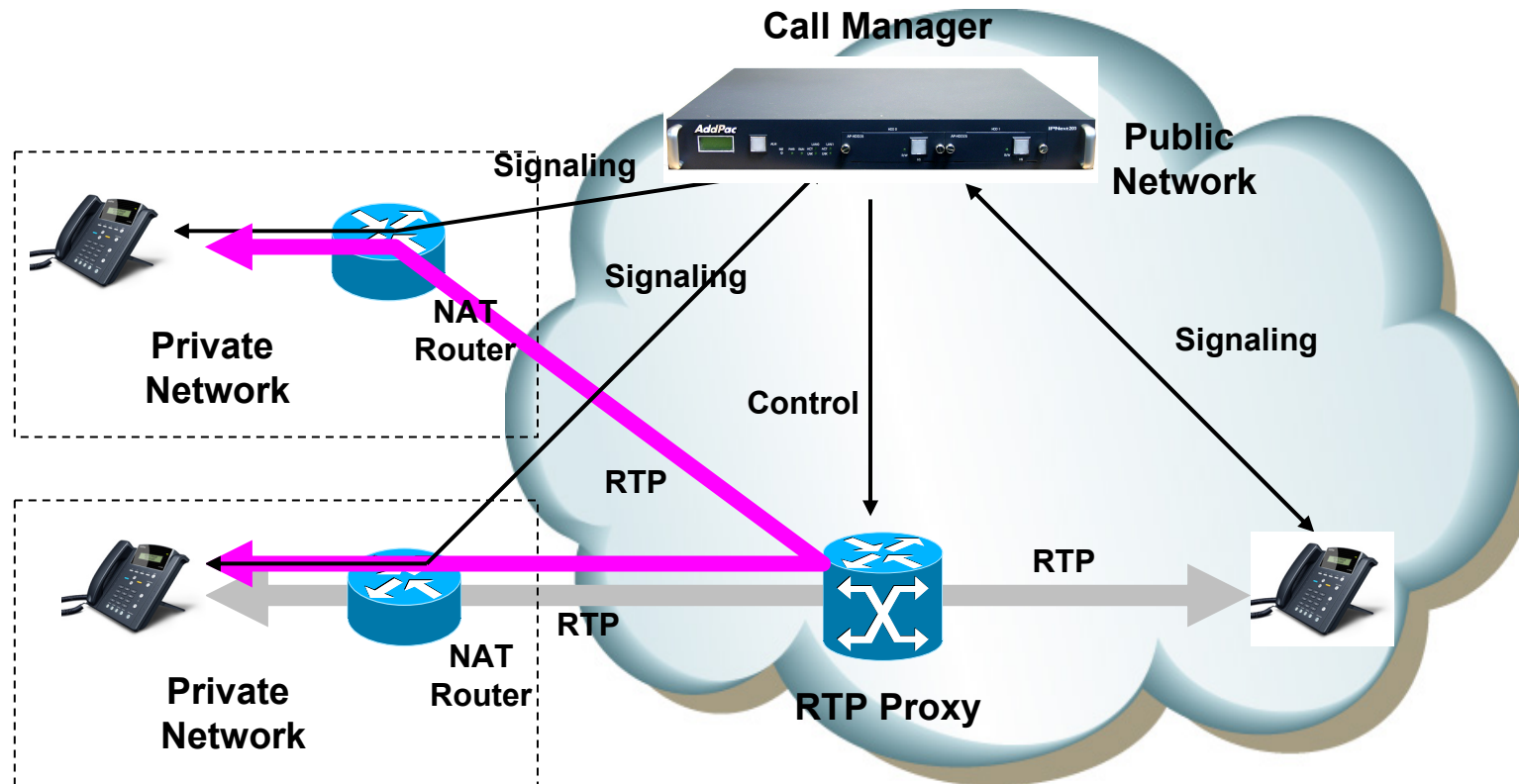
- Located between public and private network
- Call manager and RTP proxy has public and private address
- Call manager determine that the call is internal or external

Asymmetric/Symmetric NAT



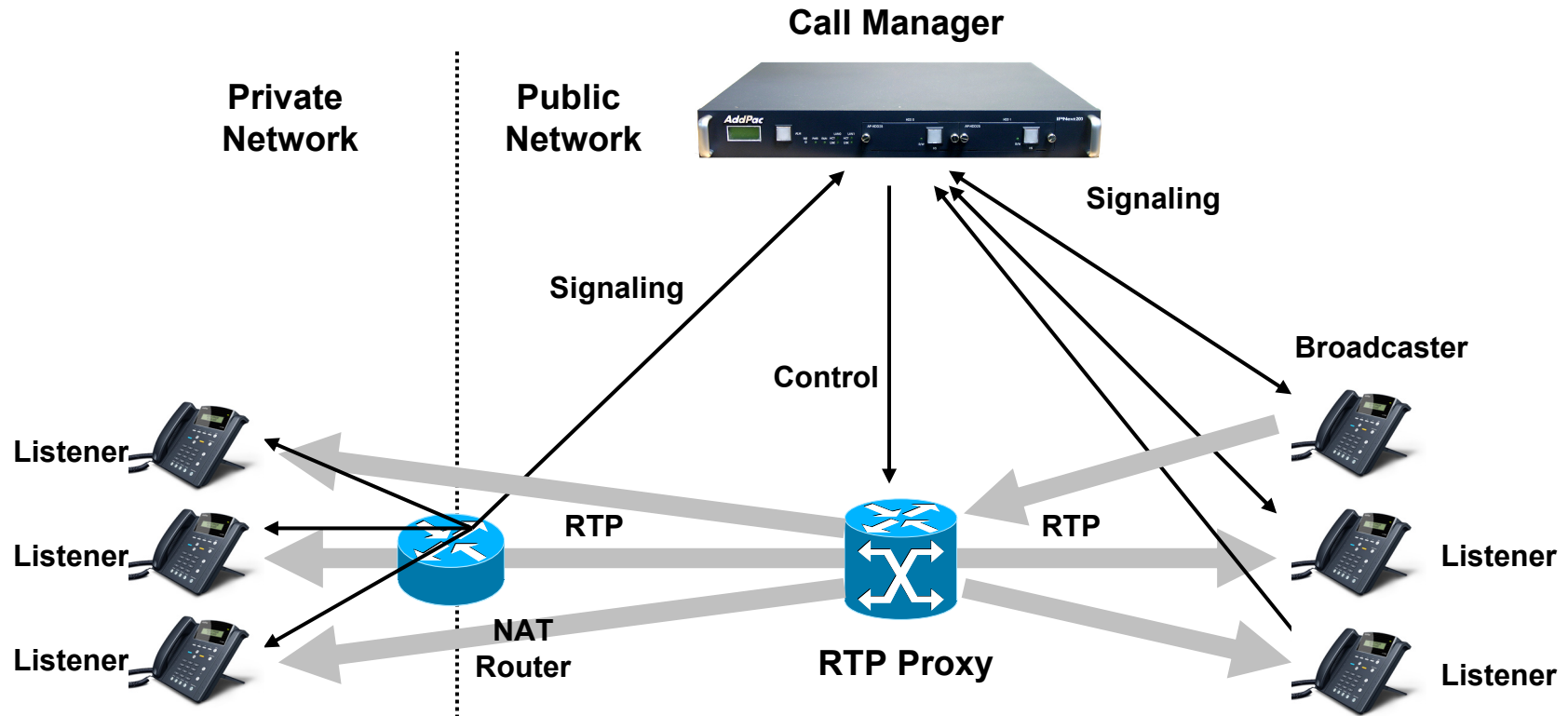
- Located in public network
- RTP Proxy has single public address
- Auto detect for asymmetric NAT via incoming RTP packet

RTP Proxy Communication between Private IP



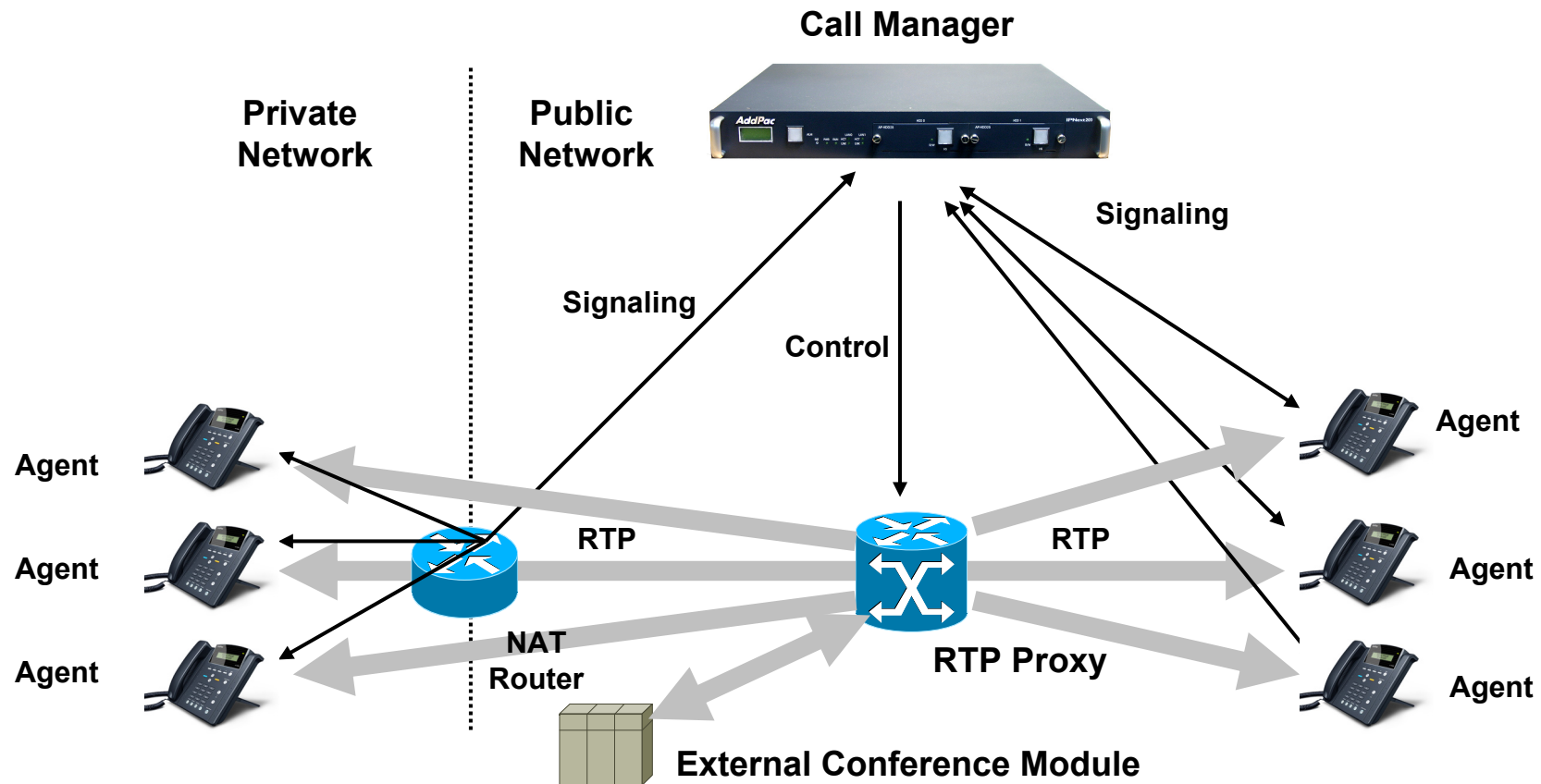
- Located in public network
- RTP Proxy has single public address
- Auto detect for asymmetric NAT via incoming RTP packet

RTP Broadcast



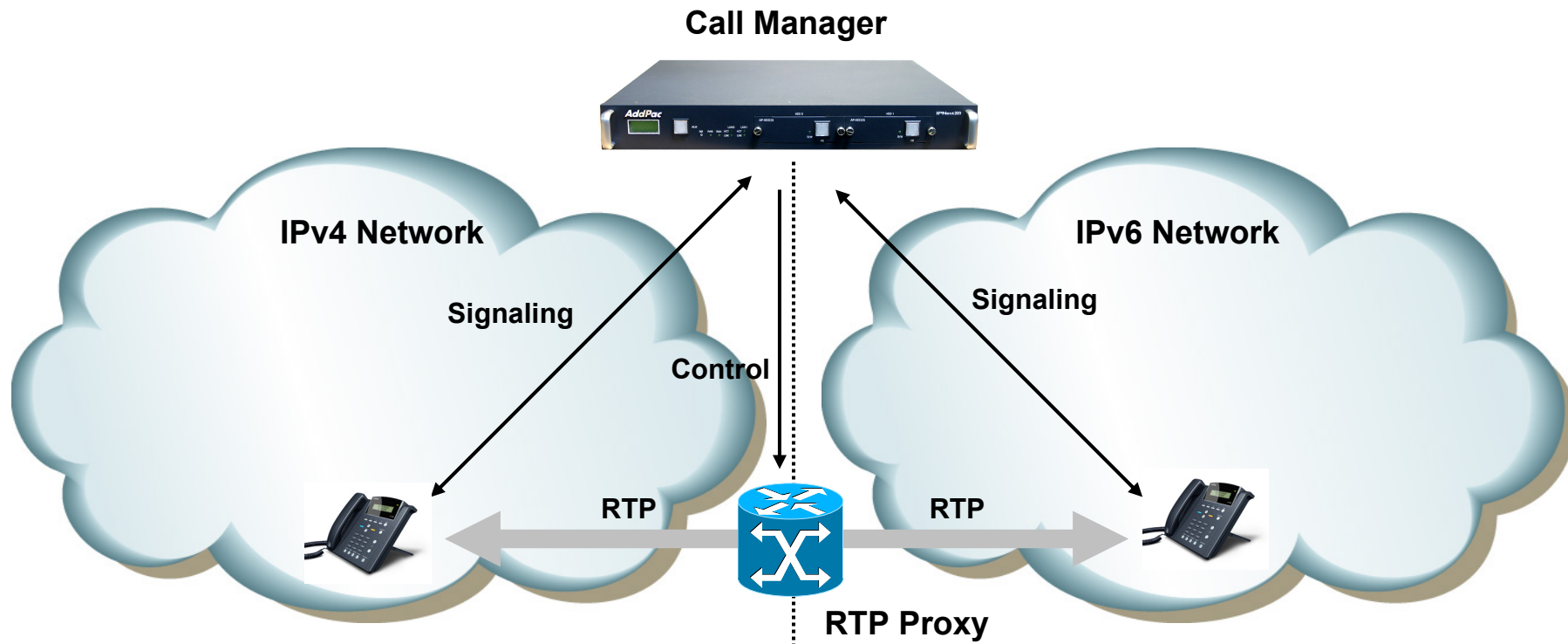
- Call Manager set the broadcaster and listener via control message
- One broadcaster and multiple listener
- RTP proxy relay for broadcaster RTP traffic
- RTP proxy never relay for listener traffic

RTP Conference



- RTP Proxy communicate with external/internal conference module (mixer)
- Conference support for private address, asymmetric NAT

IPv4/IPv6 RTP Proxy

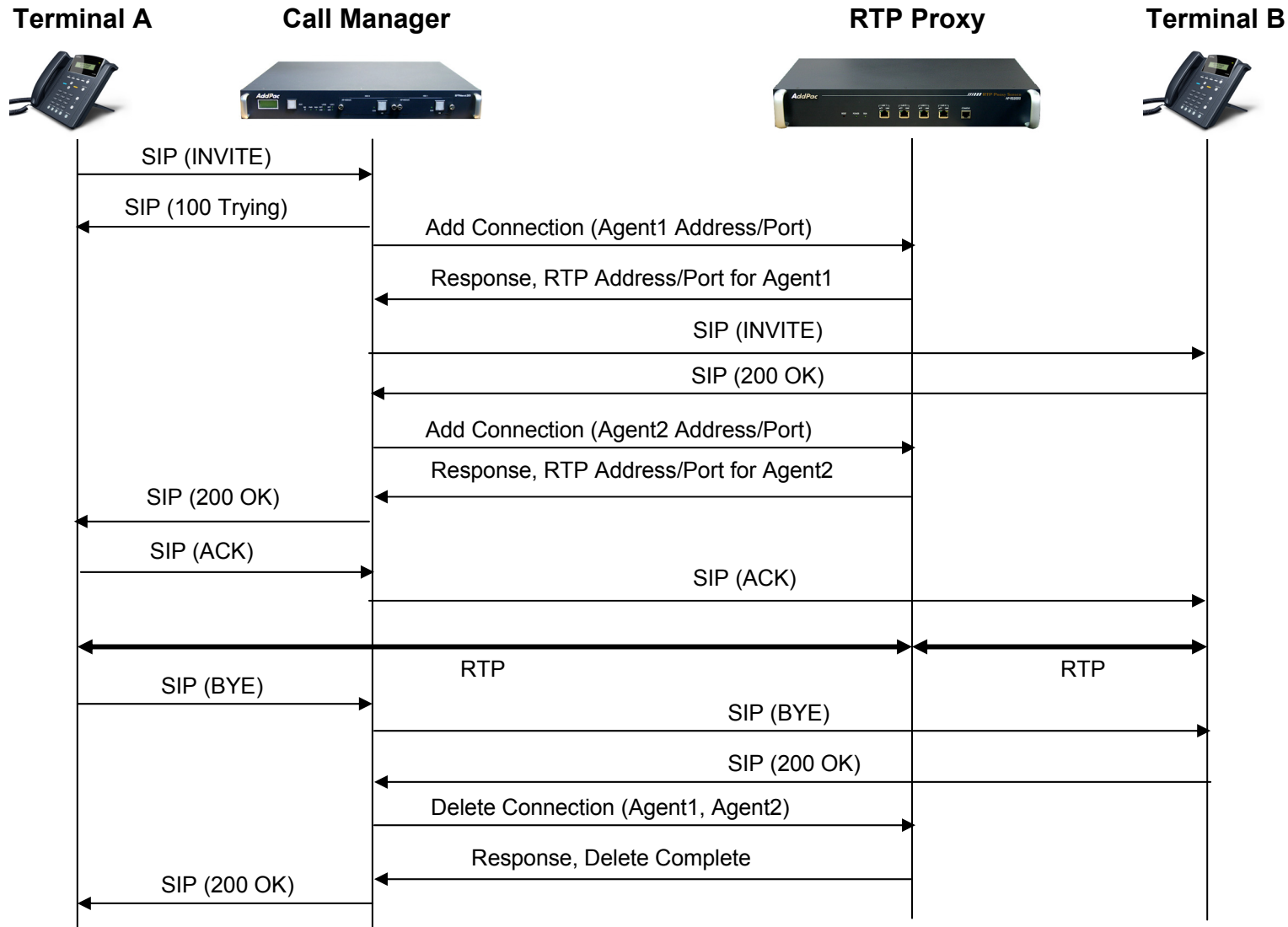


- Call manager and RTP proxy has IPv4 and IPv6 address
- Support RTP broadcasting

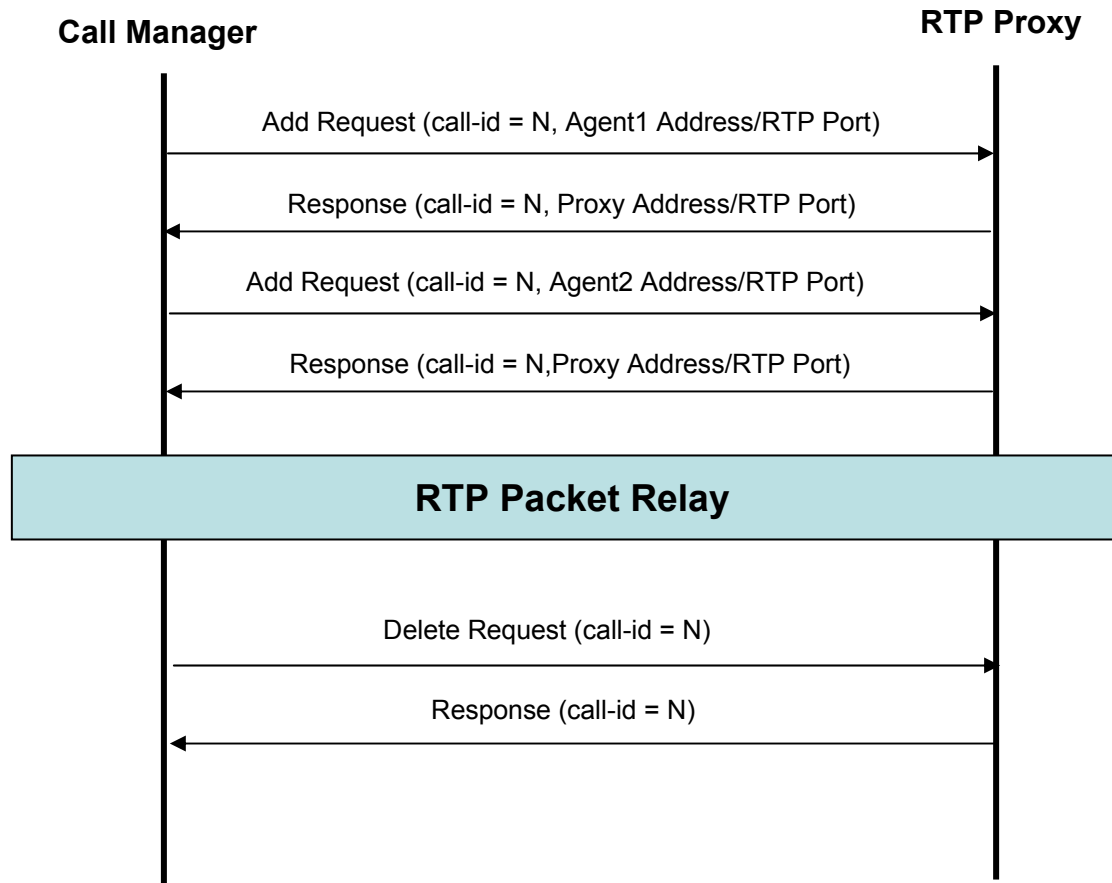


Signal Flow Diagram

Signal Flow Diagram (Ex: SIP)



RTP Proxy Control Message



Ordering Information

- **AP-RS2000 RTP Proxy Server Hardware**
 - AP-RS2000 RTP Proxy Server Main Body
 - 64bit RISC Microprocessor Architecture
 - 4-ports 10/100Mbps Fast Ethernet and 1-port RS-232C Console
 - Built-In Free Voltage Power Supply
 - Including Network Cable Set, etc.
- **Built-in APOS Internetworking Software for AP-RS2000**
- **Including 1 Year Hardware Warranty**
- **Product Documents**
 - Install and Operation Guide (PDF)
- **Pricing**
 - AddPac Technology Regional Sales Manager
 - Authorized Sales and Marketing Representatives
 - Please Contact www.addpac.com



Thank you!

AddPac Technology Co., Ltd.
Sales and Marketing

Phone +82.2.568.3848 (KOREA)

FAX +82.2.568.3847 (KOREA)

E-mail sales@addpac.com