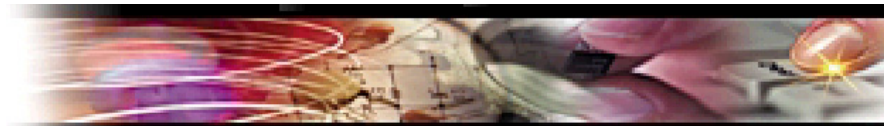


AP1501 WAN-Router High-performance, Cost-effective Design

AddPac



Product Highlights

- Standard WAN-to-LAN Router for Data Networking Applications
- Multi-protocol Routing Solutions between WAN and LAN Access
- Powerful 32bit RISC Microprocessor Architectures
- Fixed a Single Fast Ethernet and Serial (WAN) Port for E1/T1 Data Link
- AddPac APOS Internetworking Software to provide Scalability, Functionality, Stability, and QoS Control for AddPac Router I
- High-performance IP-Routing Capability with Reliability
- Static, RIP v1/2, and OSPF v2 Routing Protocols
- Support Traffic Queuing,
- SNMP MIB v2 for Network Management Features
- Web Based Management
- Standard & Extended Access List for Security Functions
- Essential Scalability Features such as DHCP Server & Relay, NAT/PAT, IEEE Transparent Bridging, IP Accounting, and Debugging/Diagnostics, etc.
- Remote Software Upgrade using FTP & TFTP
- Cisco Style Command Line Interface(CLI)
- Compact Size Design

PassFinder AP1501 WAN Router

PassFinder AP1501 leased-line router provides high-performance IP-routing connectivity for small enterprise, government and other public offices as well as Internet game room and Internet based cyber apartment. Moreover, PassFinder AP1501 router is able to guarantee almost 100% line utilization with E1/T1(2,048/1,544Mbps) data networking speed for high-speed Internet connectivity via WAN-to-LAN Routing

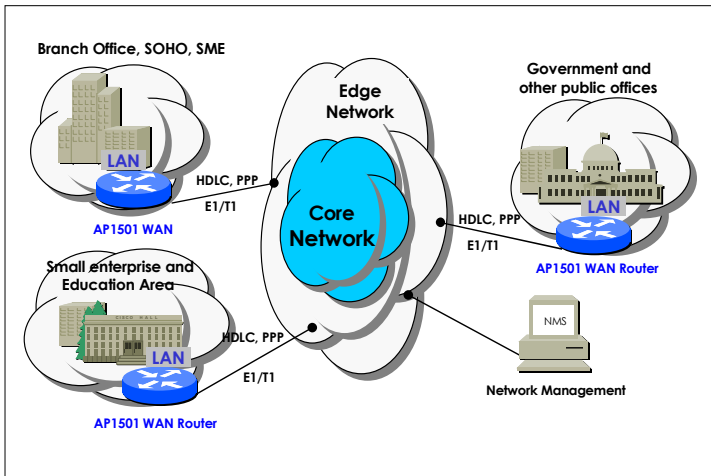
In addition, AP1501 router supports various WAN protocols such as X.25*, PPP, Frame-Relay, HDLC, including Static, RIP v1/2, OSPF v2 routing protocols and network management features such as SNMP MIB v2, CLI, etc. This router is typically fixed configuration with the following interface: 10/100Mbps fast Ethernet, a single synchronous serial port (V.35 serial interface), asynchronous serial Port for console.

APOS Internetworking Software for AP Router

AddPac PassFinder Operating System (APOS) is best **Router** software to provide scalability, reliability, stability, and QoS for internetworking solutions. APOS also provides optimized performance and industry standard network functionality with easy-to-use, easy-to-installation, and maintenance.

PassFinder The AP1501router provides [best price-performance ratio](#) and [effective networking solution](#) for customer satisfaction.

Network Diagram Using AP1501 WAN Router



Hardware Specification

Microprocessor

- CPU 32bit RISC Microprocessor

Memory

- Flash Memory 4Mbyte
- Main Memory 16M bps High-Speed SDRAM
- Boot Memory 512Kbyte Flash Memory

Network Interface

- Fixed WAN Port One(1) E1/T1 Serial Port
- Fixed LAN Port One(1) 10/100Mbps Ethernet
- Console Port One(1) RS-232C Interface

Power & Operation Environments

- Power Requirement VAC 110~220V, 50/60Hz, 15Watt
- Operating Temperature 0°C to + 45°C (32° to 112°F)
- Storage Temperature -40°C to + 85°C (-40° to 176°F)
- Relative Humidity 5% to 95% (Non-condensing)

Dimensions

- H X W X D (mm) 36mm X 215mm X 208mm
- Weight(Kg) 1.3Kg

Support Protocols & Services

IP Routing Protocols

- Static, RIP v1/v2, OSPF v2, and IEEE 802.1Q VLAN Routing

WAN Protocols

- X.25* Standard Protocol Support
- Point-to-Point Protocol(PPP)
- Frame-Relay PVC with Inverse ARP
- High-level Data Link Control(HDLC) Protocol
- HDLC Encapsulation (Interoperability with CISCO HDLC)

Network Managements

- Standard SNMP Agent (MIB v2) Support
- Traffic Queuing and Frame-Relay Flow Control
- Access Control and Data Protections
- Remote Management using Console, Rlogin, Telnet
- Web based Managements using HTTP Server

Security Functions

- Standard & Extended IP Access List
- Enable/Disable for Specific Protocols
- Multi-Level User Account Management
- Auto-disconnect for Telnet/Console Sessions
- PPP User Authentication Supports
 - Password Authentication Protocol(PAP)
 - Challenge Handshake Authentication Protocol (CHAP)

Operation & Managements

- System Performance Analysis for Process, CPU, Connection I/F
- Configuration Backup & Restore for APOS Managements
- Debugging, System Auditing, and Diagnostics Support
- System Booting and Auto-rebooting with Watchdog Feature
- System Managements with Data Logging
- IP Traffic Statistics with Accounting

Other Scalability Features

- DHCP Server & Relay Functions
- Network Address Translation (NAT) Function
- Port Address Translation (PAT) Function
- Transparent Bridging (IEEE Standard) Function
 - Spanning Tree Bridging Protocol Support
 - Remote Bridging Support
 - Concurrent Routing and Bridging Support
- Cisco Style Command Line Interface(CLI)
- Network time Protocol(NTP) Support
- Remote Upgrade for APOS Management using FTP/TFTP

Ordering Information

- AP1501-01 : AP1501 WAN Router Standard Configuration
 - One(1) Serial(WAN),One(1) Fast Ethernet,Console
 - 32bit RISC CPU, 4MB Flash, 16MB SDRAM
 - APOS v3.xx with Operation Manual
 - Including CAB-V35, CAB-LAN, CAB-CON
- CAB-V35 : V.35 DTE Cable
- CAB-LAN : RJ45 Ethernet Cable
- CAB-CON: RJ45 RS-232C Console Cable

Contact Information

Web site : <http://www.addpac.com>

E-mail : info@addpac.com

AddPac Technology Co., Ltd.

3F, Jeong-Am Bldg., 769-12, Yeoksam-Dong

Kangnam-Gu, Seoul, 135-080, KOREA

Phone +82 2 568 3848

Fax + 82 2 568 3847