

# IPNext500

## System Redundancy IP-PBX

High-performance Next Generation IP-PBX Solution

### Preliminary Product Overview

(Without notice, following described technical spec. can be changed)



# **AddPac**

**AddPac Technology**

Sales and Marketing

[www.addpac.com](http://www.addpac.com)

# Contents

- Product Overview
- Hardware Specification
- System Redundancy Features
- Software Service
- IP Telephony Service and Features
- RTP Proxy Service
- User Presence Service
- Network Service and Features
- Application Area
- Ordering Information

# Product Overview

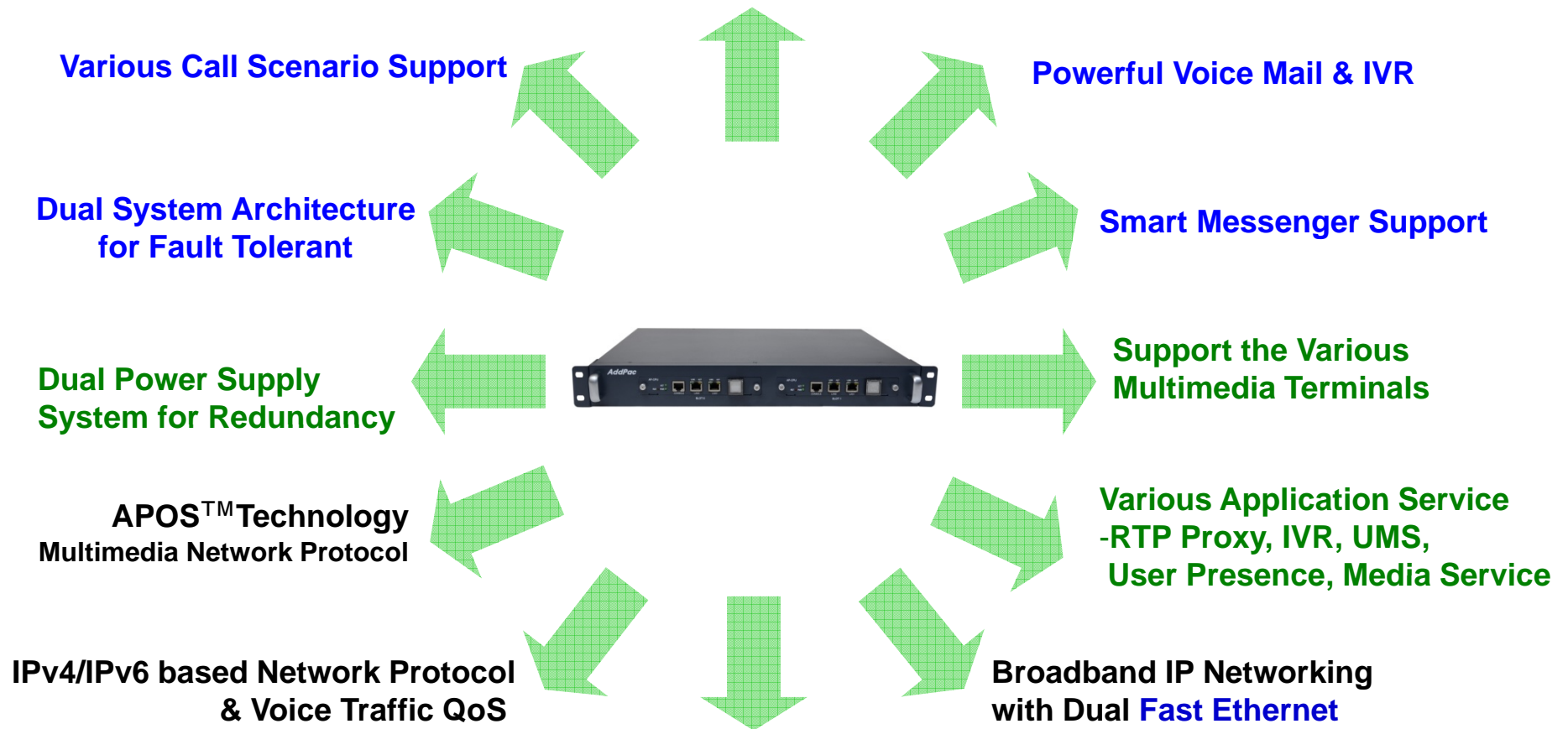
## IPNext500 Next Generation IP-PBX System

- SIP Application Server, Proxy, Registrar and Location Server
- Multiple ITSP Trunk with SIP & H.323 Accounts Support
- Dual System Redundancy Architecture
  - Two(2) Gigabit Ethernet Interface / System
- High Performance RISC Architecture
- Powerful Network Protocols (PPPoE, DHCP, Static Routing, etc)
- IPv4/IPv6 Dual Stack
- RTP Proxy Function Embedded for Private IP and IPv6 Address Interworking
- User Presence Service Features for Smart Multimedia Messenger and Smart IP Phone
- IVR Scenario Editor, Voice Mail, Media Service (Coloring), Conference
- Firmware Upgradeable Architecture
- Smart Multimedia Manager for IP-PBX Management
- Smart Messenger Service (click to dial) for Unified Communication
- Smart NMS (Network Management System) for Large Scale Deployment
- Advanced Voice QoS Mechanism
- Dual Power Supply for Redundancy

# Product Highlights

IPNext500 Next Generation IP-PBX System

## IP based Advanced IP-PBX



**AddPac**

[www.addpac.com](http://www.addpac.com)

# Hardware Specification

IPNext500 Next Generation IP-PBX System

A square logo with a dark blue background and a light blue border. The text "RISC" is positioned above "CPU" in white, sans-serif font.

RISC  
CPU

- High-End Microprocessor Computing Power
- Main Chassis
  - Dual Redundancy CPU Boards for System Fault Tolerant
    - Two(2) 10/100/1000Mbps Gigabit Ethernet
    - One(1) RS-232C Console (RJ45)
  - Dual Redundancy Power Supply
  - Hot-Swap Features

# Hardware Specification

IPNext500 Next Generation IP-PBX System

RISC  
CPU

## IPNext500 Front Side



CPU Board  
(Hot-Swap)

LAN0 for Active CPU

LAN1 for Active CPU

LAN0 for Standby  
CPU

LAN1 for Standby  
CPU

Hot-Swap Button

# Hardware Specification

IPNext500 Next Generation IP-PBX System

RISC  
CPU

## IPNext500 Back Side



PSU A

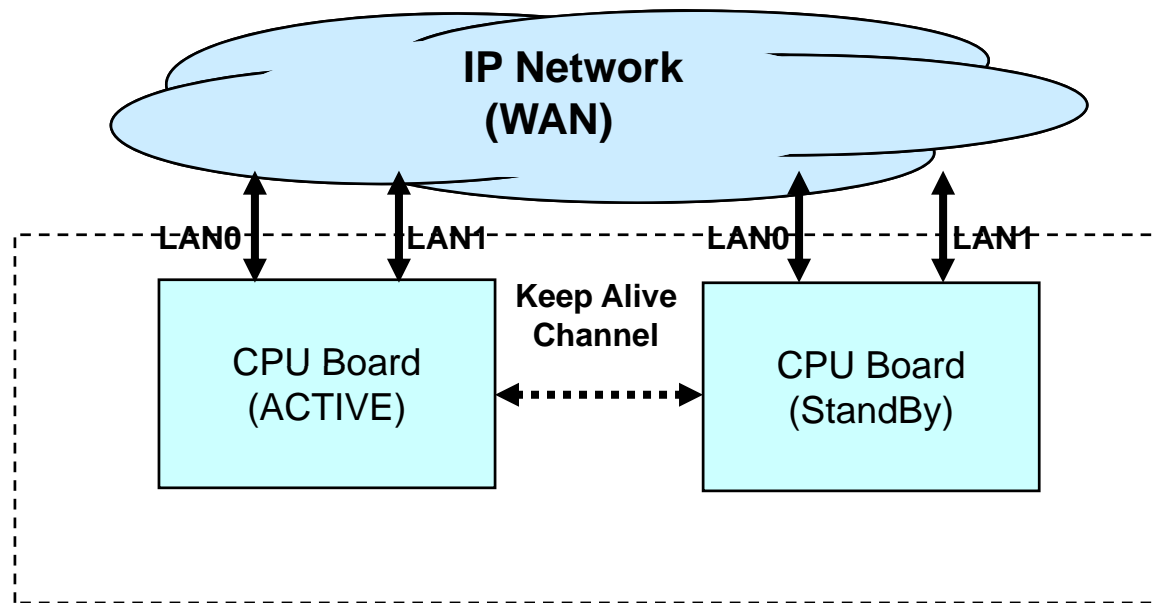
PSU B

Power On/Off Switch

# System Redundancy Features

IPNext500 Next Generation IP-PBX System

## IPNext500 System Block Diagram

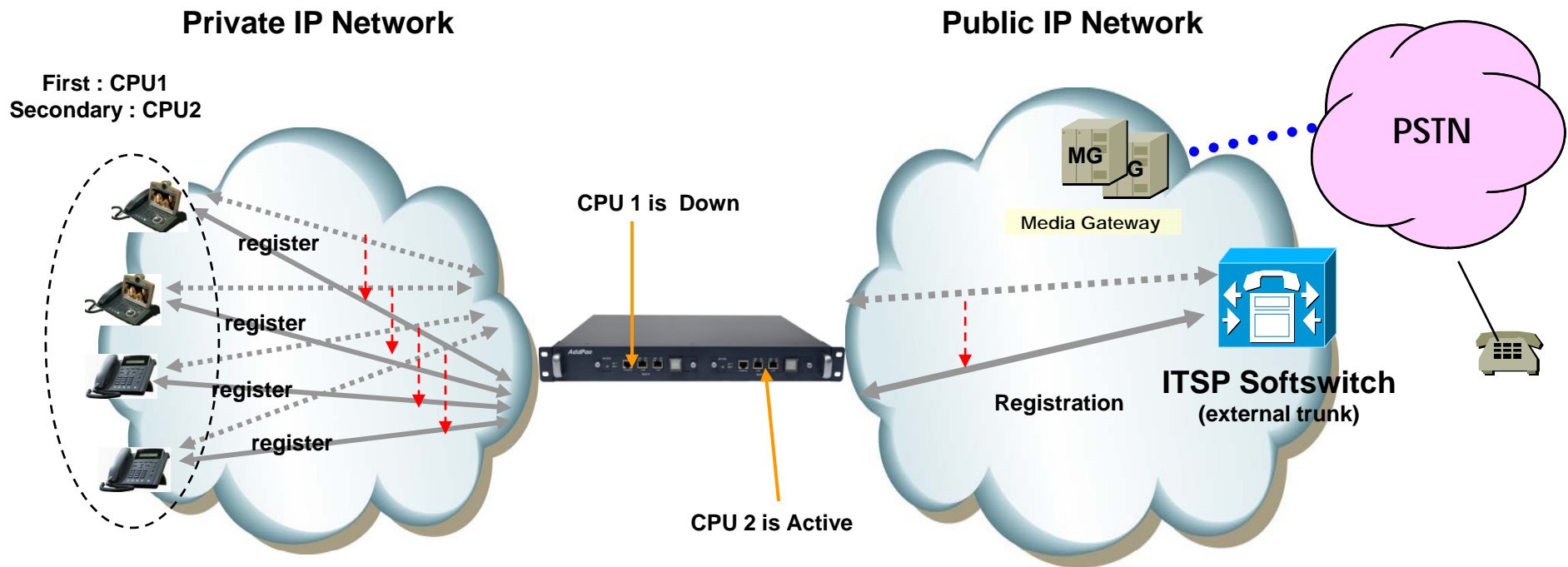




# System Redundancy Features

IPNext500 Next Generation IP-PBX System

- Active– Active Duplication Scheme
- Active – Standby Duplication Scheme
- VRRP based Duplication Scheme



Active – Standby Duplication Scheme (example)

# Software Service

IPNext500 Next Generation IP-PBX System

- **Built-in AddPac APOS Internetworking Software**

- Scalability, Functionality, and Stability Features
- Advanced IP-PBX Call Manager Features
- QoS Control Features

- **Programmable Video, Audio, and Voice Services**

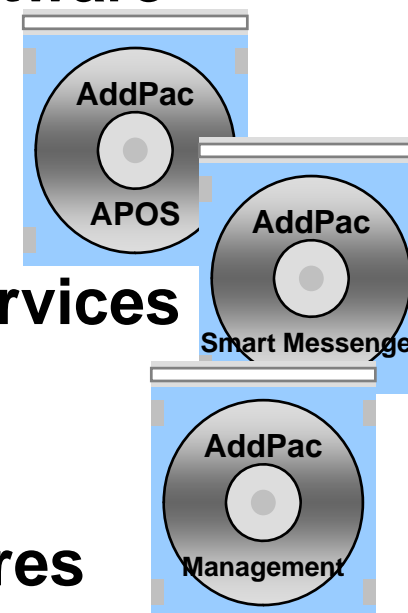
- Audio, Video and Voice Codec

- **Firmware Upgradeable Architecture**

- **Industry Standard Network Protocol Features**

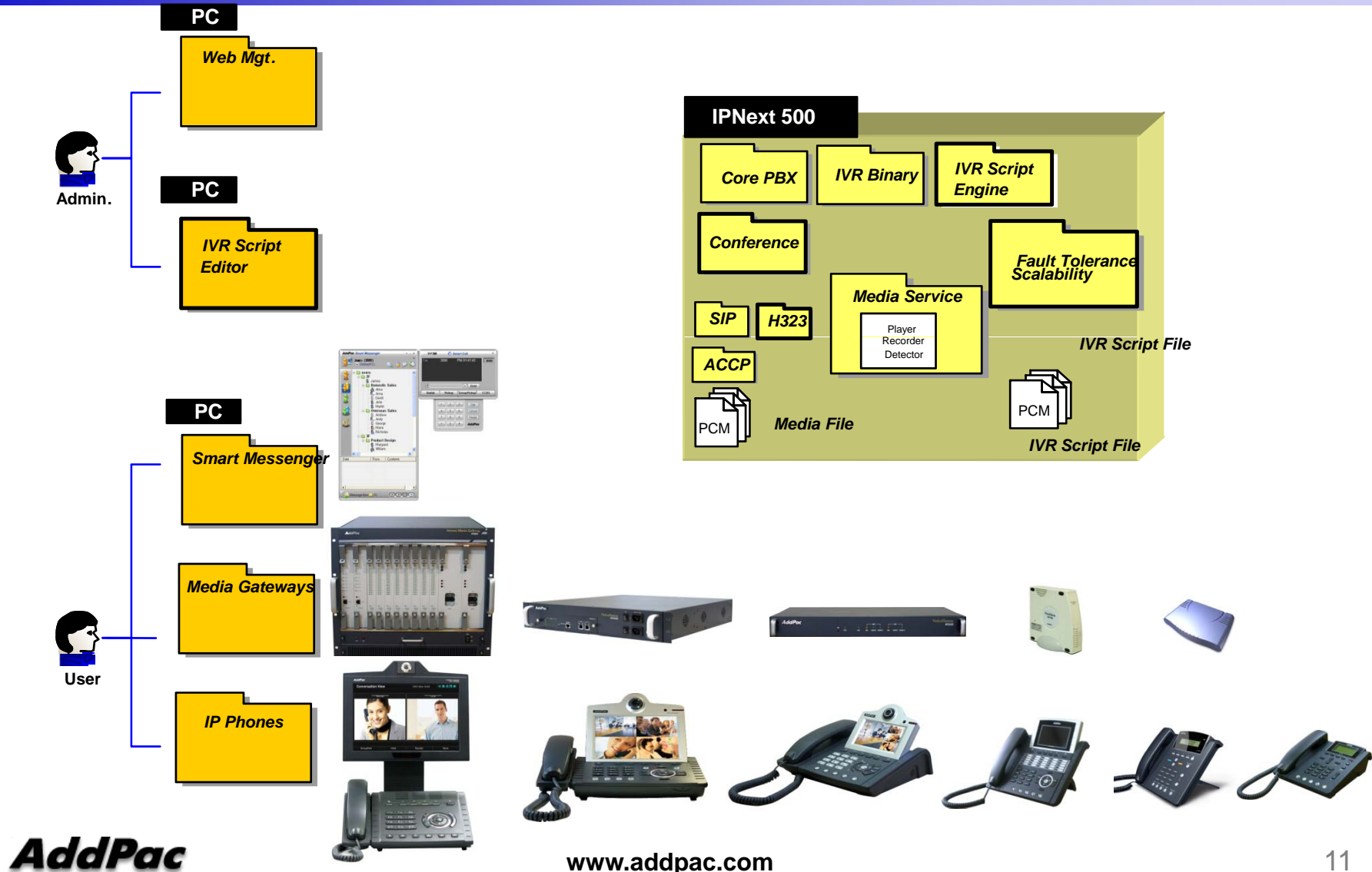
- **Highly User Friendly Management Features**

- PC based Smart Messenger
- Smart Multimedia Manager for Operation & Management



# IP-PBX Software Components

IPNext500 Next Generation IP-PBX System



# IP Telephony Service and Features

## IPNext500 Next Generation IP-PBX System

- **Signaling Server**

- SIP Application Server, Proxy, Registrar and Location Server (RFC3261)
- Multiple ITSP Trunk with SIP & H.323 Accounts Support
  - IP UA Client Role for Registering to ITSP SIP Server
  - H.323 Gatekeeper Client Role for Registering to ITSP H.323 Gatekeeper Server

- **IVR & Auto Attendant**

- Default Auto Attendant Support
- Interactive Voice Response (IVR)
  - Provides with GUI-based Smart IVR Scenario Editor
  - Upload/Download Scenario by Smart IVR Scenario Editor
  - Supports Multiple Concurrent Scenarios
  - Supports Recordable IVR Prompts

- **Voice Mail**

- Support Voice Mail with IVR
- Access from Remote Site via Trunk Support
- Voice Mail Notification Support

# IP Telephony Service and Features

## IPNext500 Next Generation IP-PBX System

- **Number & Call Routing**

- Trunk Hunting by Preference or Sequential
- Call Hunting by Preference, Simultaneous, Random
- Call Hunting by Chained Hunting Group
- Partition for Address Grading
- Call Class for Call Access Control
- Number Translation Rule for Inbound/Outbound Call
- Centrex with Prefix Support
- Multiple Shared Devices with One Number
- Multiple Numbers on One Device
- Individual Call Park within Park Number Pool
- Group Call Park within a Group or Other Group
- Call Pickup of Ringing Call of Same Group or Other Group
- Call Pickup of Parked Call
- Call Transfer - Blind, Consult
- Call Forwarding - Unconditional, Busy, No Answer, Voice Mail
- Call Waiting
- Call Swaping
- Call Hold

# IP Telephony Service and Features

## IPNext500 Next Generation IP-PBX System

- **IP-PBX Advanced Features with AddPac IP Phones**

- Multiple Call Handling with Call Status and Calling Line Number and Name
- Plug and Play with Auto Discovery Function
- Softkey Map Download and Control
- Time and Date Setting
- Voice Mail List View
- Parked Call List View
- Call Forward Setting
- Recent Call List View
- Calling Number and Name Identification
- Individual Call Park within Park Number Pool by Softkey
- Group Call Park within a Group or Other Group by Softkey
- Call Pickup of Ringing Call of Same Group or Other Group by Softkey
- Call Pickup of Parked Call by Softkey
- Call Transfer - Blind, Consult by Softkey
- Call Waiting Indication
- Call Swaping by Softkey
- Call Hold by SoftKey
- Conference Control



# IP Telephony Service and Features

## IPNext500 Next Generation IP-PBX System

- **Conference**

- G.711 (4-party Conference, 2 session) : Basic
- Ad-hoc Conference
- Dial-Out Conference
- Meet-me Conference
- Multiple External MCU support( Video, Audio, etc) : AddPac AP-MC1000, etc
- Conference Chair and Participants Management

- **Music & Announcement**

- Music on Hold
- Replaceable Announcements
- Dialing Music / Tone Service

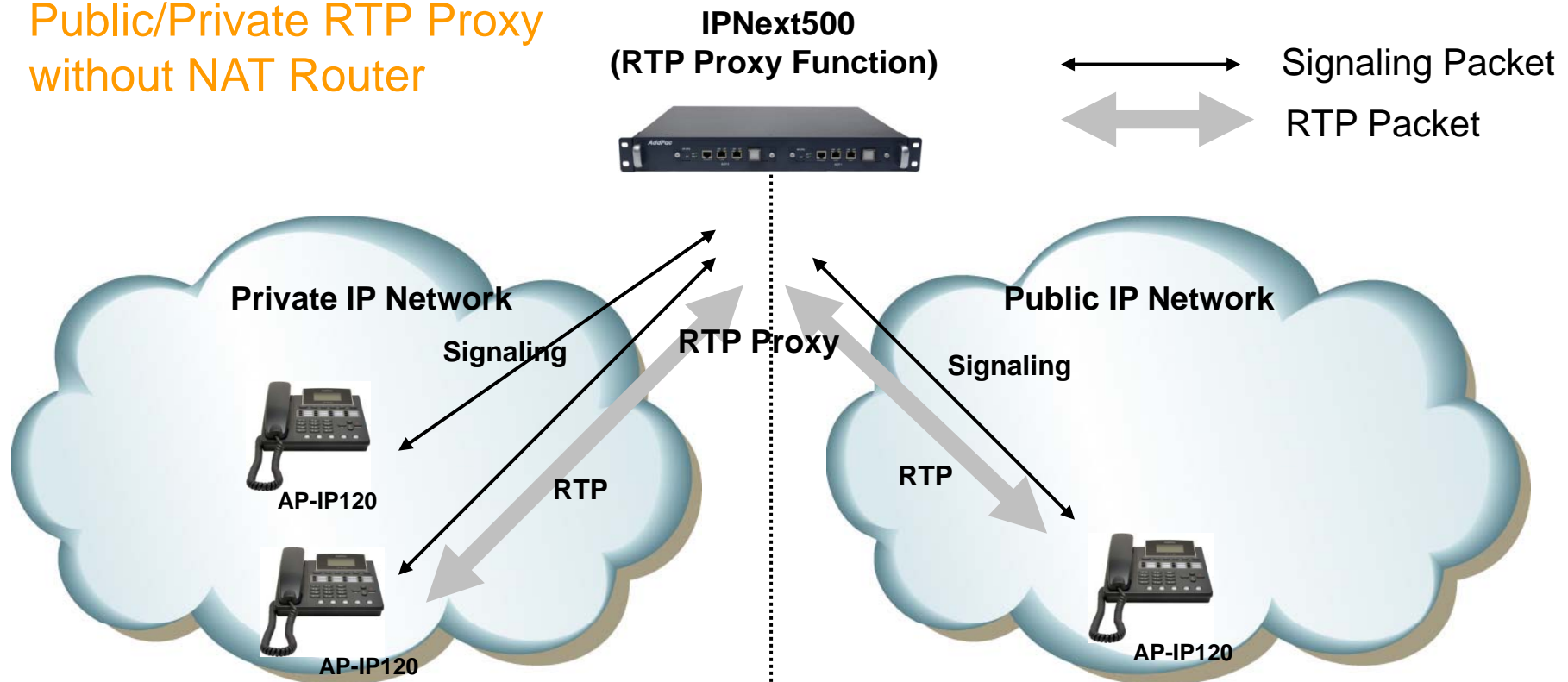




# RTP Proxy Service

IPNext500 Next Generation IP-PBX System

Public/Private RTP Proxy  
without NAT Router

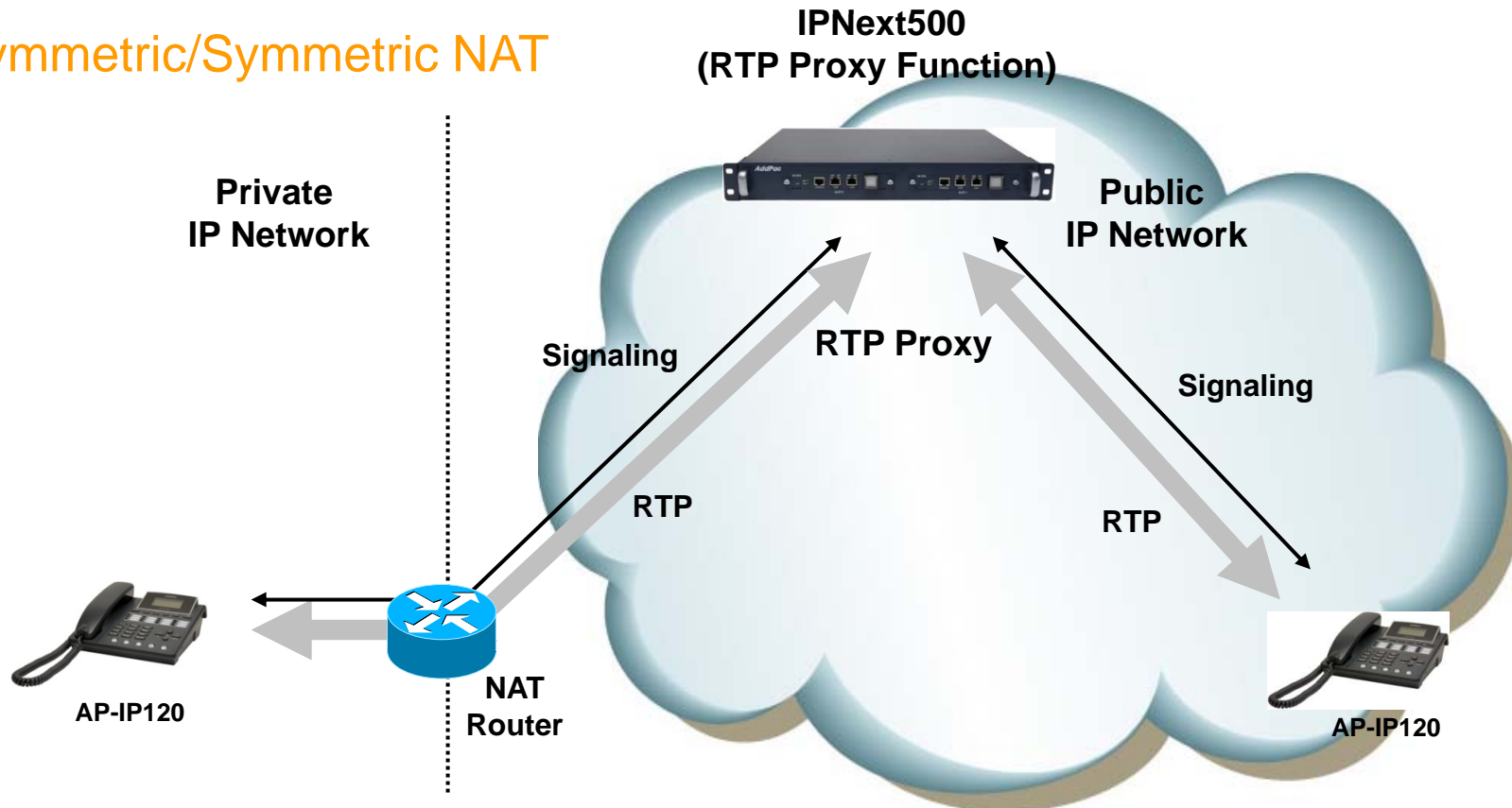


- Located between public and private network
- IPNext500(Call manager + RTP proxy) has public and private address
- IPNext500 determine that the call is internal or external

# RTP Proxy Service

IPNext500 Next Generation IP-PBX System

## Asymmetric/Symmetric NAT

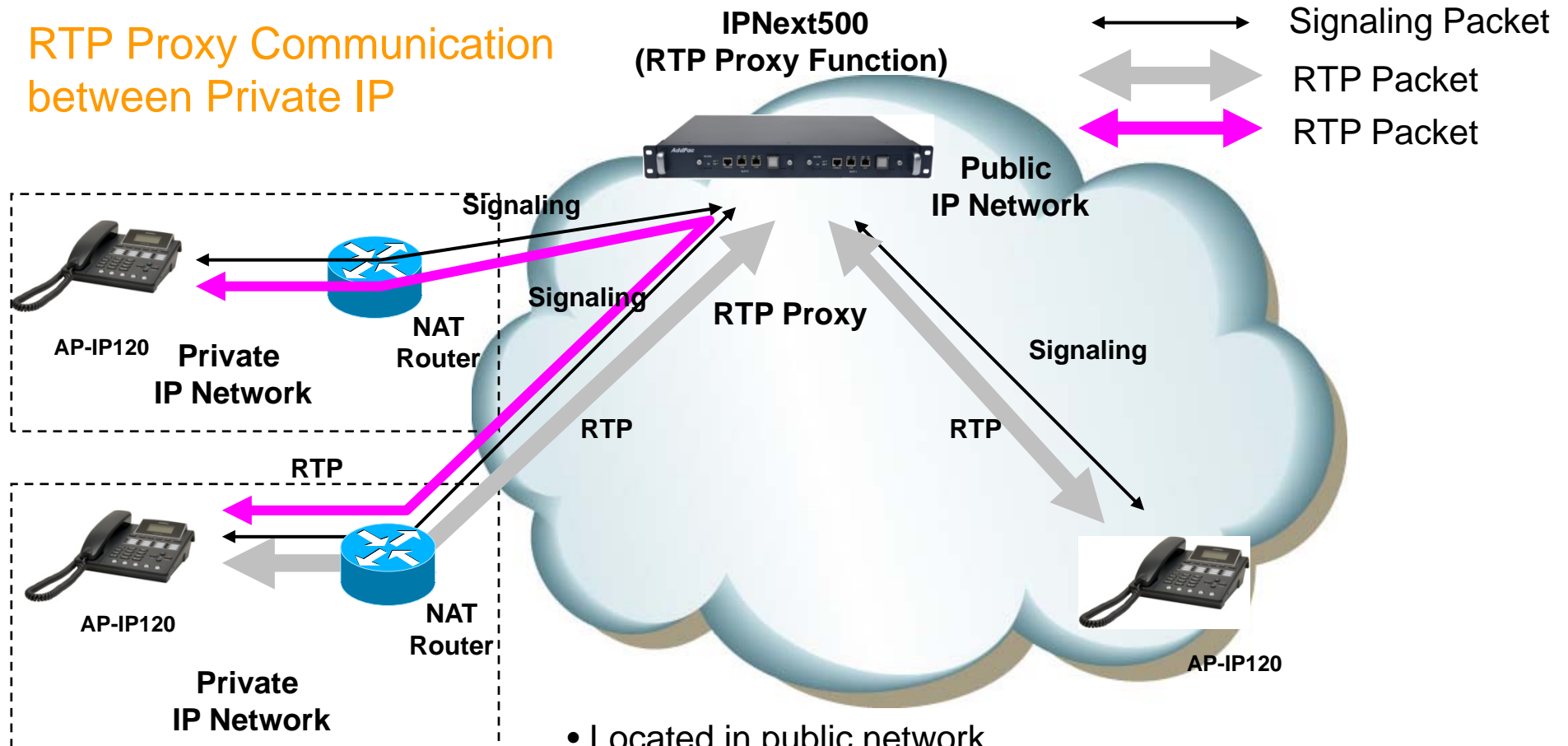


- Located in public network
- RTP Proxy has single public address
- Auto detect for asymmetric NAT via incoming RTP packet

# RTP Proxy Service

IPNext500 Next Generation IP-PBX System

## RTP Proxy Communication between Private IP

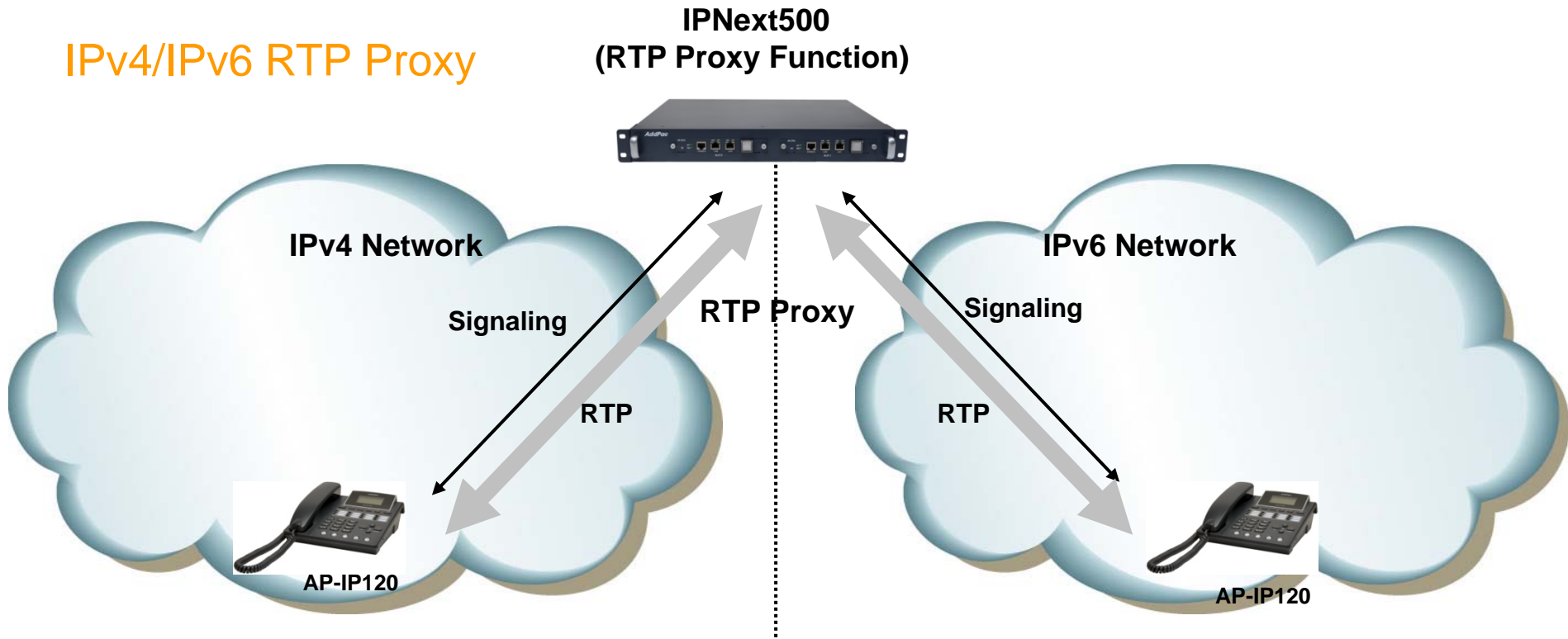


- Located in public network
- RTP Proxy has single public address
- Auto detect for asymmetric NAT via incoming RTP packet

# RTP Proxy Service

IPNext500 Next Generation IP-PBX System

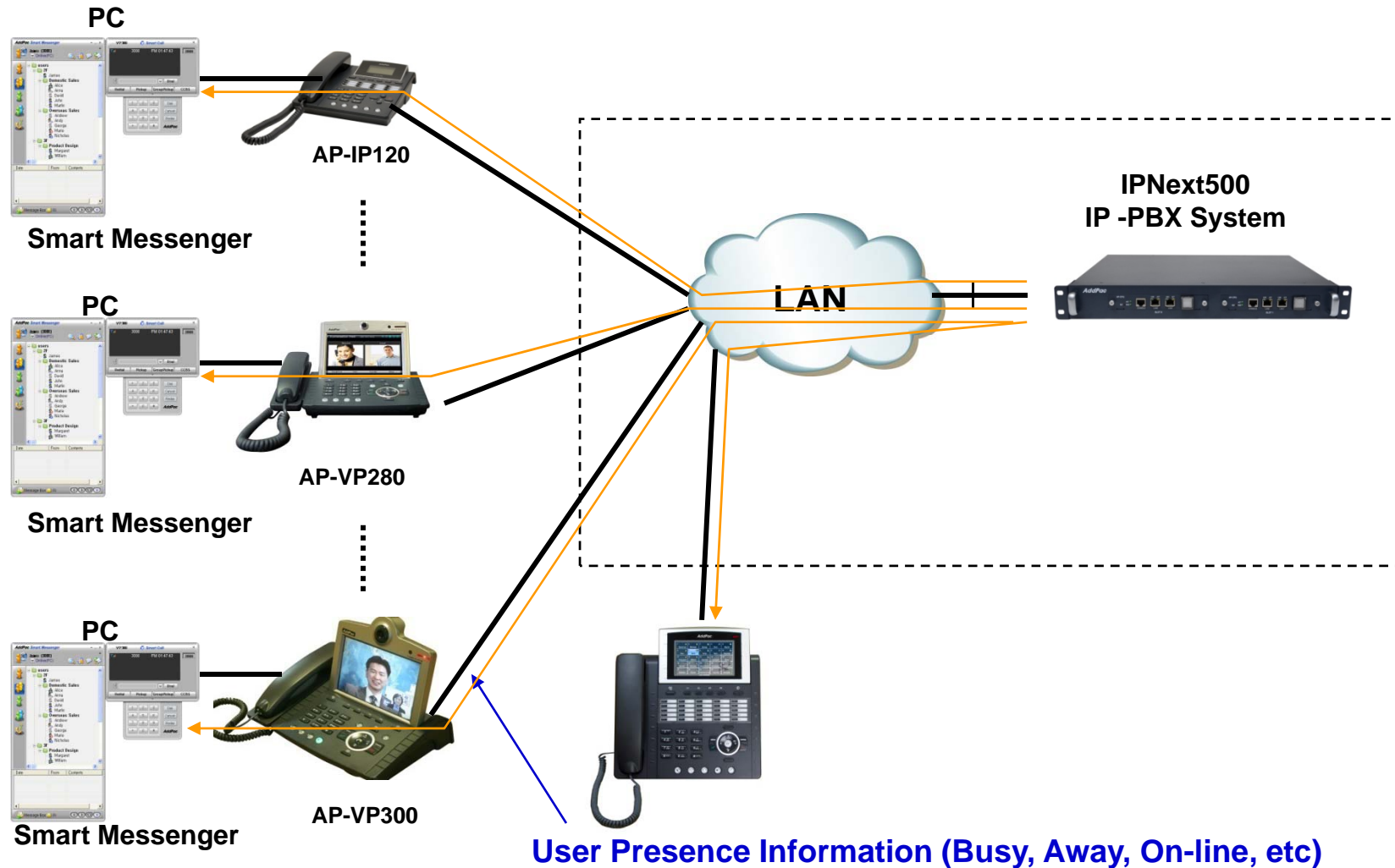
IPv4/IPv6 RTP Proxy



- IPNext500(Call manager + RTP proxy) has IPv4 and IPv6 address

# User Presence Service for UC

IPNext500 Next Generation IP-PBX System



# Network Service and Features

IPNext500 Next Generation IP-PBX

## **Basic Network Protocols**

- ARP, IP, IPv6, TCP, UDP, ICMP, ICMPv6, SCTP, IGMP, MLD

## **Routing Protocol**

- IPv4 : Static
- IPv6 : Static

## **Service Protocol**

- FTP, Telnet, TFTP, DHCP Server/Relay, SNMP Server
- CDP (Cisco Discovery Protocol)
- DNS Resolver , DDNS(nsupdate)
- Bridge
- Syslog
- IP/IPv6 policy control (QoS)
- VPDN (Virtual Private Dial-up Network : L2TP Server)

# Network Service and Features

IPNext500 Next Generation IP-PBX

## **IPv4/IPv6 Interworking**

- NAT/PAT for IPv4
- IP connect (formerly ip-share) and device cascade for IPv4
- IP/IP, IP/GRE tunneling
- NAT-PT
- 6to4, Autoconfig tunneling

## **IPv4 Address Configuration**

- Fixed (Static)
- DHCP
- PPPoE

## **IPv6 Address Configuration**

- Fixed (Static)
- EUI-64
- Autoconfig (Neighbor Advertisement and Solicitation)



# Network Service and Features

IPNext500 Next Generation IP-PBX

## **Miscellaneous**

- Standard & Extended IPv4/IPv6 Access List
- Multi-level User Account Management
- IP accounting
- fsh (Embedded file system shell)
- STUN Client

# Network Service and Features

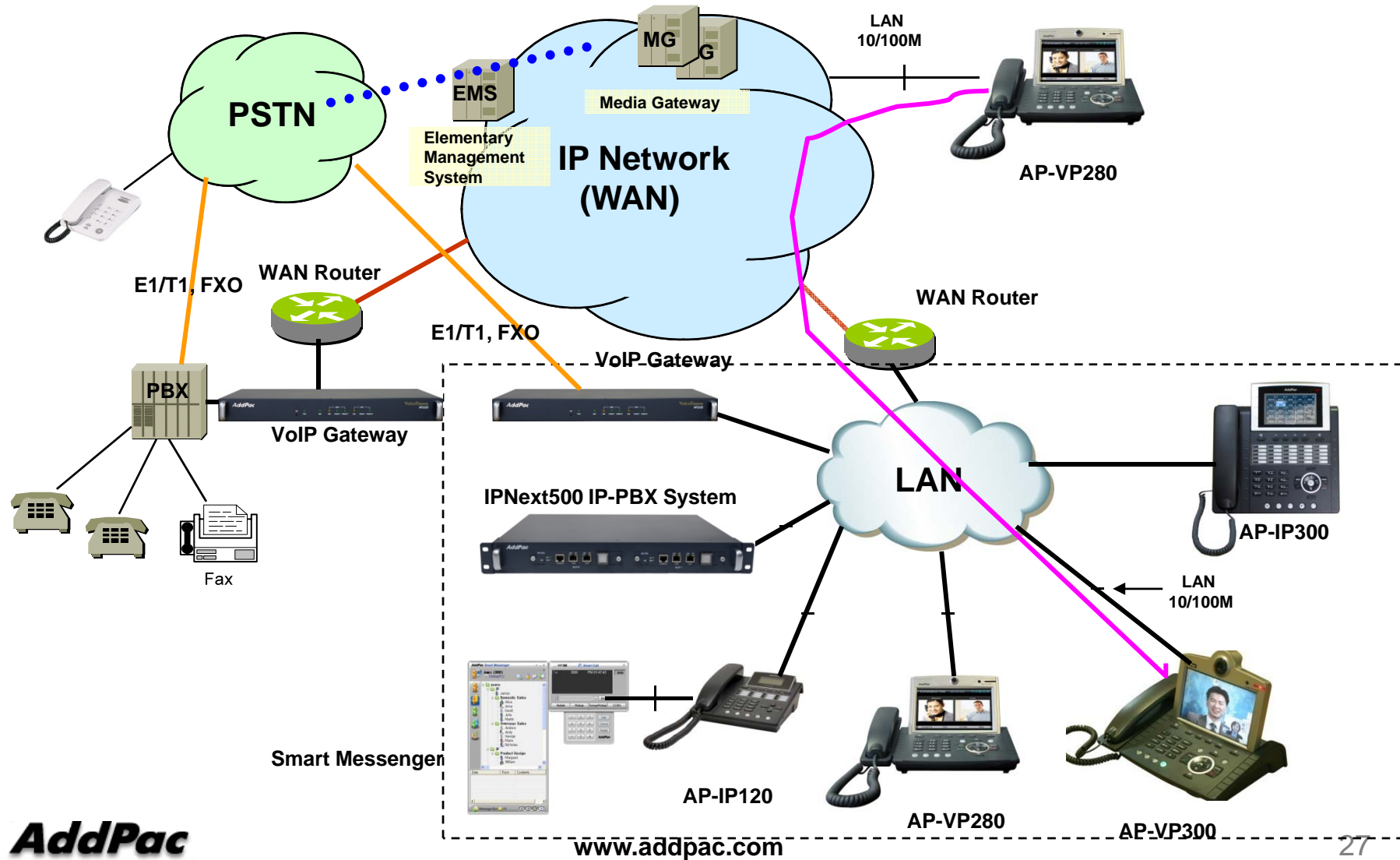
IPNext500 Next Generation IP-PBX

## **SNMP MIBs**

- MIB-II
- RMON MIBs (Statistics, History, Alarm, Hosts Group)
- RFC2465 Management Information Base for IP Version 6: Textual Conventions and General Group
- RFC2466 Management Information Base for IP Version 6: ICMPv6 Group
- RFC2452 IP Version 6 Management Information Base for the Transmission Control Protocol
- RFC2454 IP Version 6 Management Information Base for the User Datagram Protocol
- AddPac Enterprise MIBs
- etc

# Standard IP-PBX System Application

IPNext500 Next Generation IP-PBX System



# Ordering Information

- **IPNext500 Next Generation IP-PBX Hardware**
  - IPNext500 IP-PBX Main Body
  - High Performance CPU board (Hot-Swap)
  - 2-ports Gigabit Ethernet and 1-port RS-232C Console
  - Including Network Cable Set & Internal Power Supply, etc.
  - Built-in Dual Power Supply
  - Additional CPU board for Fault Tolerant (option)
- **Built-in APOS Internetworking Software for IPNext500**
- **Including 1 Year Hardware Warranty**
- **Product Documents**
  - Install and Operation Guide (PDF)
- **Pricing**
  - AddPac Technology Regional Sales Manager
  - Authorized Sales and Marketing Representatives
  - Please Contact [www.addpac.com](http://www.addpac.com)



# Thank you!

**AddPac Technology Co., Ltd.**  
Sales and Marketing

Phone +82.2.568.3848 (KOREA)

FAX +82.2.568.3847 (KOREA)

E-mail [sales@addpac.com](mailto:sales@addpac.com)