

AP-VR2000 Video Service Router

High-performance Multimedia Gateway Solution



AddPac

AddPac Technology

Sales and Marketing

www.addpac.com

AP-VR2000 Video Service Router

- Product Overview
- Benefits and Features
- Hardware Specification
- Software Service
- Video Service & Features
- Audio & Voice Service and Features
- Network Service and Features
- Application Area
- Ordering Information



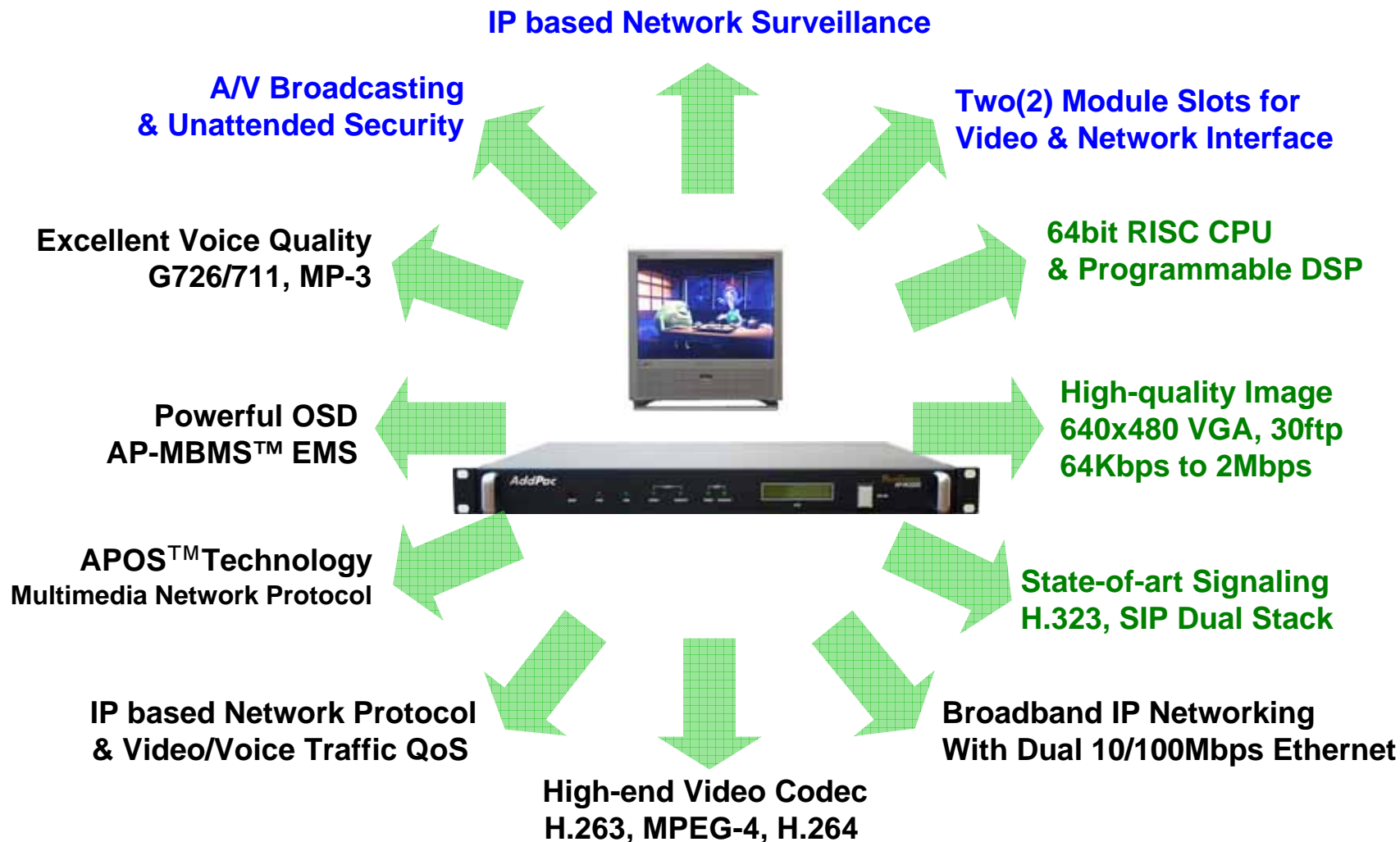
Product Overview

AP-VR2000 Video Service Router

- Two(2) Module Slots for Video and Network Interface
- IP based Audio/Video Broadcasting Solution
- IP based Network Surveillance Solution
- High-performance Video, Audio, and Voice Service
- Firmware Upgradeable Architecture
- Video Solution with Outstanding Network Service Capability
- Audio/Video Privacy Protection

Product Highlights

AP-VR2000 Video Service Router



Benefits and Features

AP-VR2000 Video Service Router

- **High Quality Images up to 64kbps and 2Mbps**
- **High-performance Audio & Video Codec Support**
 - H.263, MPEG-4, and H.264 Video Codec
 - Line IN/OUT : G.726, G.711, MP-3, OGG Vorbis* Audio Codec
- **Up to 30 frame/sec, 640 x 480(VGA) Resolution**
- **Voice over IP Signaling Protocol for Voice over IP Service**
 - H.323, SIP Multiple Stack Support
- **IP based Network Protocol Support**
- **Video Application**
 - Audio & Video Broadcasting Solution
 - Network Surveillance Solution
 - Video on Demand Service Solution

Hardware Specification

AP-VR2000 Video Service Router

64bit
CPU

High-end
DSP

- **64bit RISC Microprocessor Computing Power**
- **Built-in High-end Programmable DSP Hardware Architecture**
- **Main Chassis**
 - **Network Interface**
 - Two(2) 10/100Mbps Fast Ethernet
 - One(1) RS-232C Console (RJ45)



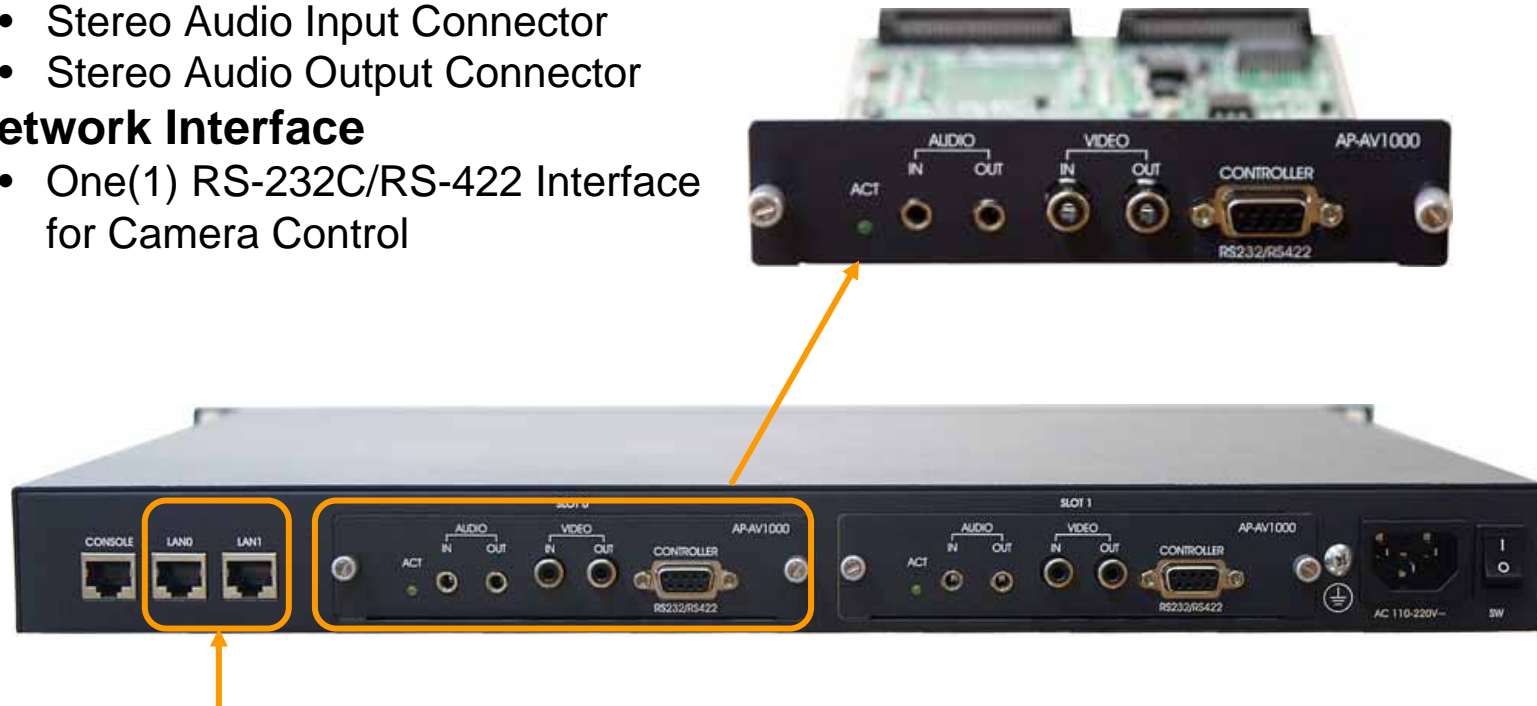
Hardware Specification

AP-VR2000 Video Service Router

64bit
CPU

High-end
DSP

- **Video Codec Module (AP-AV1000)**
 - **Powerful Video Interface**
 - RCA/BNC Video Input/Output
 - **High quality Audio and Voice Interface**
 - Stereo Audio Input Connector
 - Stereo Audio Output Connector
 - **Network Interface**
 - One(1) RS-232C/RS-422 Interface for Camera Control



Two(2) Fast Ethernet

AddPac

www.addpac.com







Hardware Specification

AP-VR2000 Video Service Router

ATM
SAR

V.35

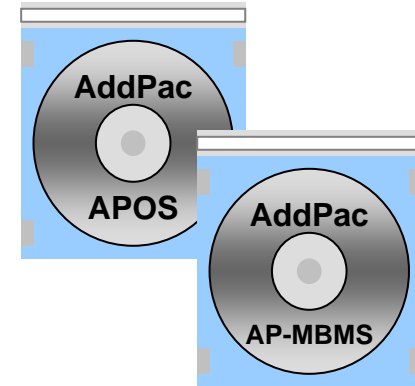
- **Network Module**

AIM-ATMOC3-1		1-Port OC3 155Mbps ATM Network Interface Module
AIM-ATMDS3-1		1-Port DS3 45Mbps ATM Network Interface Module
AIM-ATM1E1		1-Port ATM E1 Network Interface Module
AIM-V35FR1		1-Port V.35 Interface Module
AIM-V35FR2		2-Port V.35 Interface Module
AIM-V35FR6		6-Port V.35 Interface Module

Software Service

AP-VR2000 Video Service Router

- **Built-in AddPac APOS Internetworking Software**
 - Scalability, Functionality, and Stability Features
 - Video Traffic QoS Control
- **Programmable Video, Audio, and Voice Services**
 - Video Codes, Audio, and Voice Codec
- **Firmware Upgradeable DSP Architecture**
- **WAN Router Function Integrated**
- **Industry Standard IP based Network Protocol Features**
- **AP-MBMS (Multi-media Broadcasting Management System) Solution**
 - Server and Client Architecture
 - JAVA based EMS Solution
 - Broadcast Status Monitoring, Scheduling, Login Management, and Remote System Management Support
 - Intel Pentium Machine with MS Window Server OS and MS-SQL



Video Service and Features

AP-VR2000 Video Service Router

- **Various Video Networking Interface**
 - Composite (RCA)
- **High-performance Video Codec Support**
 - H.263, MPEG-4, JPEG, and H.264
- **Powerful Image Resolution Support**
 - QCIF(176x144), CIF(352x288), QVGA(320x240), and VGA(640x480)
- **Up to 30fps at 1Mbps with VGA-Resolution(MPEG-4)**
- **64Kbps to 2Mbps Operating Video Traffic Bandwidth**
- **Rate Control for Video Traffic QoS**
 - Ensuring Optimized Quality
 - Frame Rate with Limited Bandwidth
- **High-end Error Resilient Against Various Packet Error**



Audio & Voice Service and Features

AP-VR2000 Video Service Router

- **Audio & Voice Networking Interface**
 - Audio Input/Output Port (2 x 3.5mm Stereo Female Connector)
- **VoIP based Signaling Protocol Support**
 - H.323, SIP Multiple Signaling Protocol Stack
 - H.323 Gateway, Gatekeeper Support
- **High-performance Audio & Voice Codec Support**
 - Line IN/OUT : G.726, G.711, MP-3 Audio Codec
- **Enhanced QoS Management Features for Voice Traffics**

Network Service and Features

AP-VR2000 Video Service Router

- **Routing Protocols**
 - Static, RIP v1/v2, OSPF v2, and IEEE 802.1Q VLAN Routing
 - IGMP Protocol, Multicasting Join
- **WAN Protocols**
 - Point-to-Point Protocol(PPPoE for ADSL),etc
 - ATM Classes of Service (AAL0,5), ATM Encapsulation(IPOA, PPPoA)
- **Security Functions**
 - Standard & Extended IP Access List
 - Enable/Disable for Specific Network Protocols
 - Multi-level User Account Management
 - Auto-disconnect for Telnet/Console Sessions
 - PPP User Authentication Supports (PAP & CHAP)
- **Operation & Managements**
 - System Performance Analysis for Process, CPU, Connection Interface
 - Debugging, System Auditing, and Diagnostics Support
 - System Booting and Auto-rebooting with Watchdog Feature
 - System Managements with Data Logging
 - IP Traffic Statistics with Accounting

Network Service and Features

AP-VR2000 Video Service Router

- **Network Managements**
 - DHCP Server & Relay Functions
 - Network Address Translation (NAT) Function
 - Port Address Translation (PAT) Function
 - Transparent Bridging (IEEE Standard) Function
 - Spanning Tree Bridging Protocol Support
 - Remote Bridging Support
 - Concurrent Routing and Bridging Support
 - Cisco Style Command Line Interface (CLI)
 - Network time Protocol (NTP) Support
- **Network Managements**
 - Standard SNMP Agent (MIB v2) Support
 - Remote Management using Console, Telnet
 - Web based Management using HTTP Server Interface

AP-VR2000 Video Service Router

Application Area

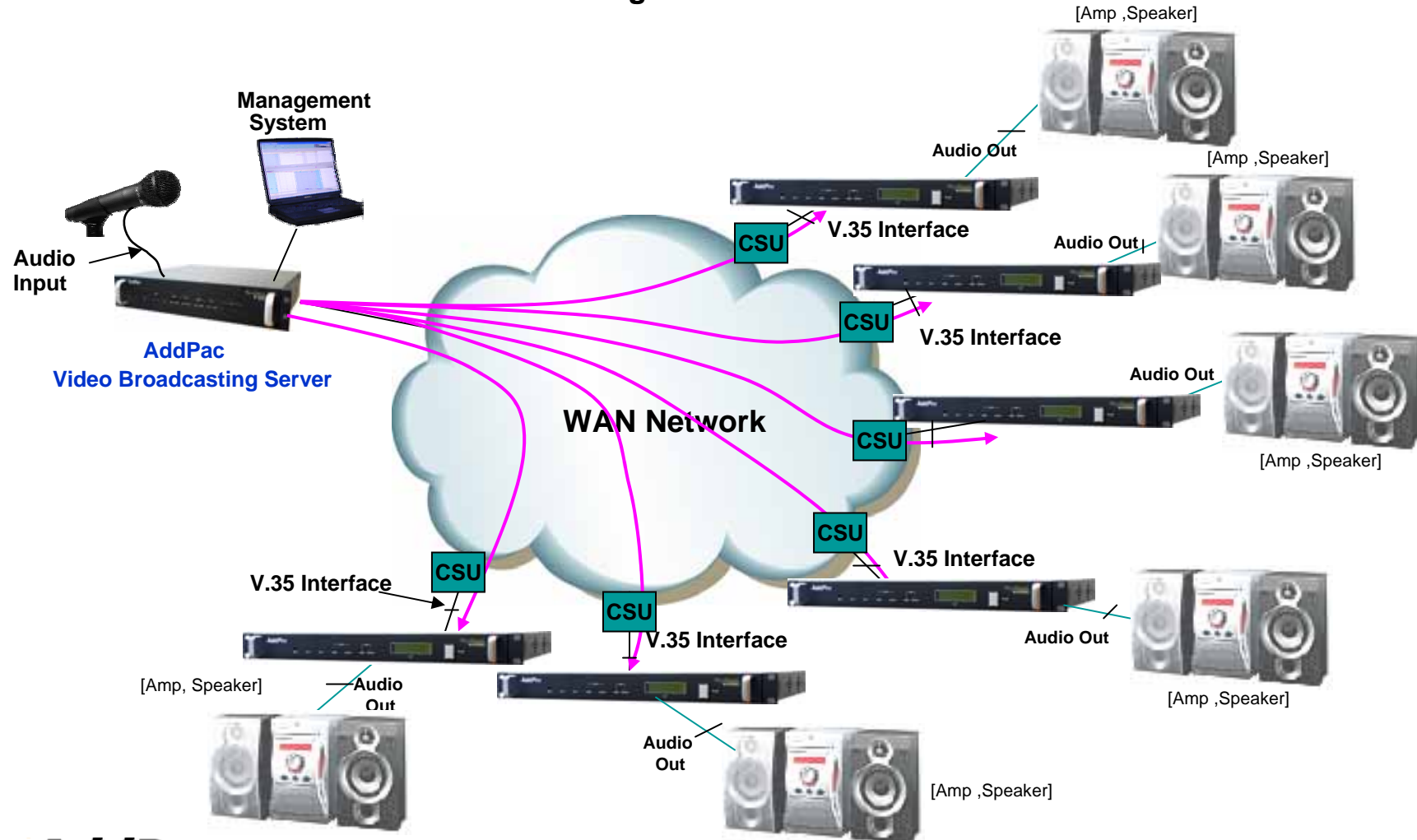
- Audio Real-time Broadcasting
- Audio/Video Real-time Broadcasting
- Network Surveillance
- Video Line Extension



Audio Real-time Broadcasting

AP-VR2000 Video Service Router

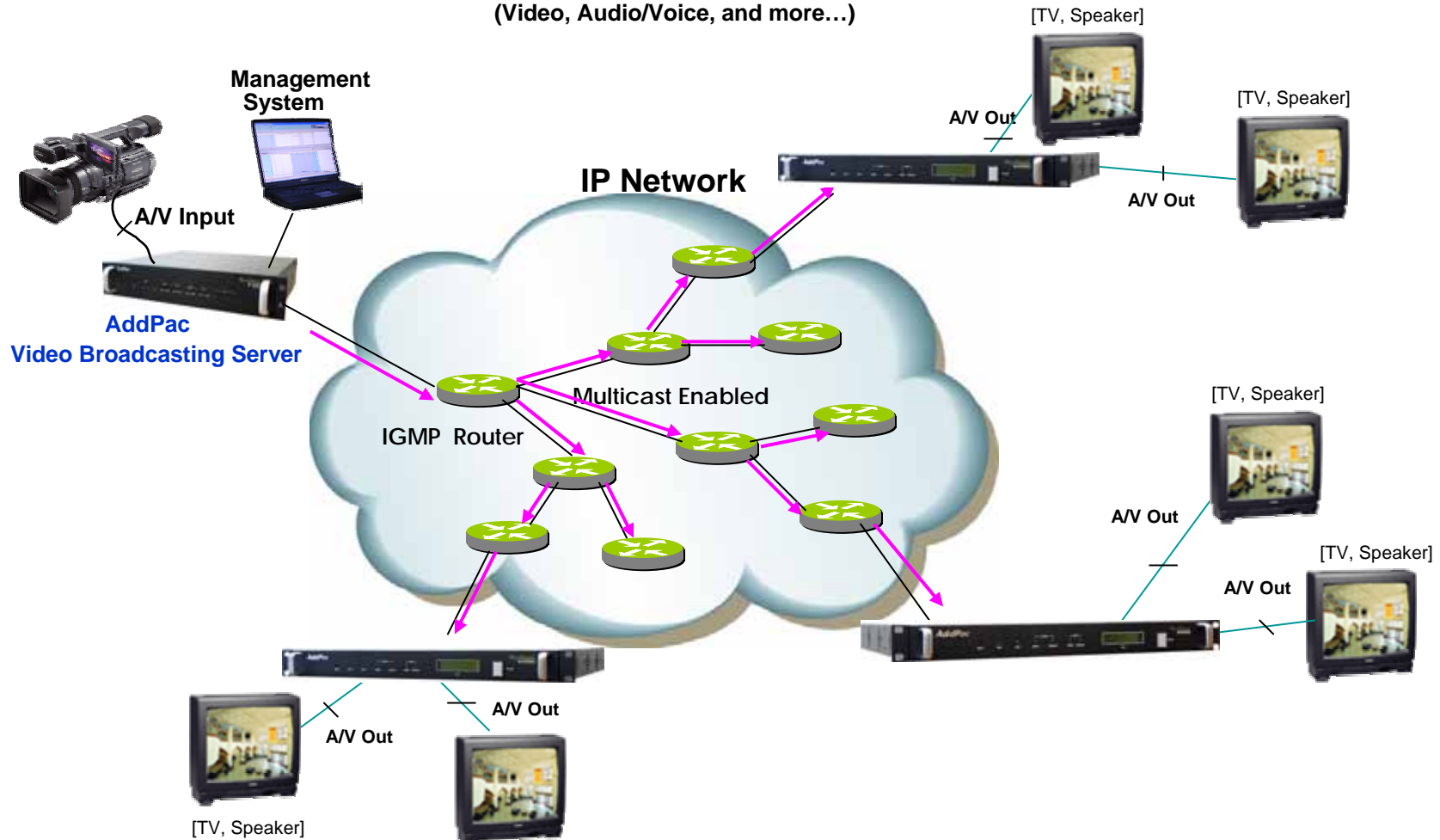
Audio Broadcasting Service via IP Network



Audio/Video Real-time Broadcasting

AP-VR2000 Video Service Router

**Audio and Video Broadcasting Service via
Multicasting IP Network**
(Video, Audio/Voice, and more...)



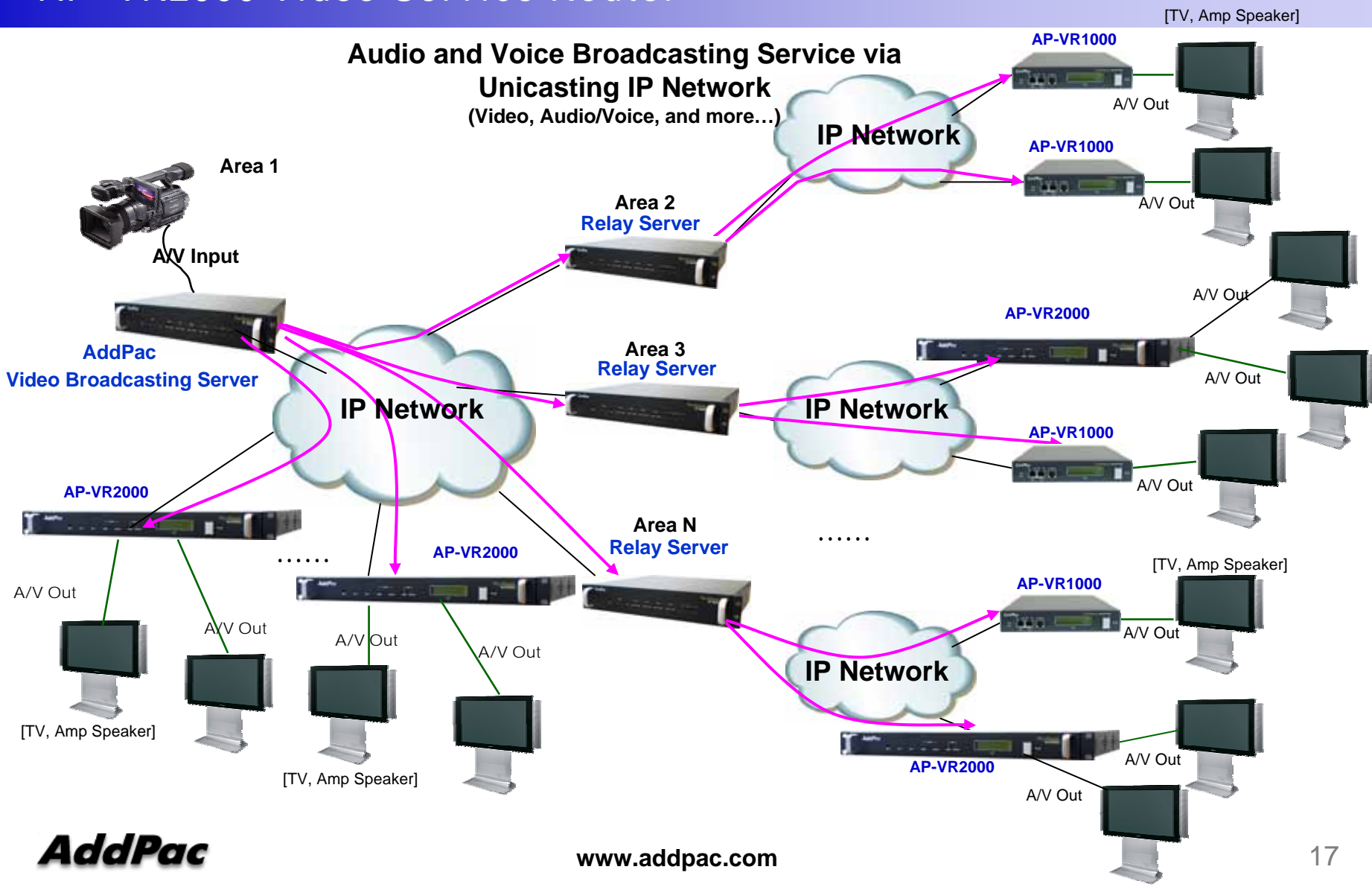
AddPac

[TV, Speaker]

www.addpac.com

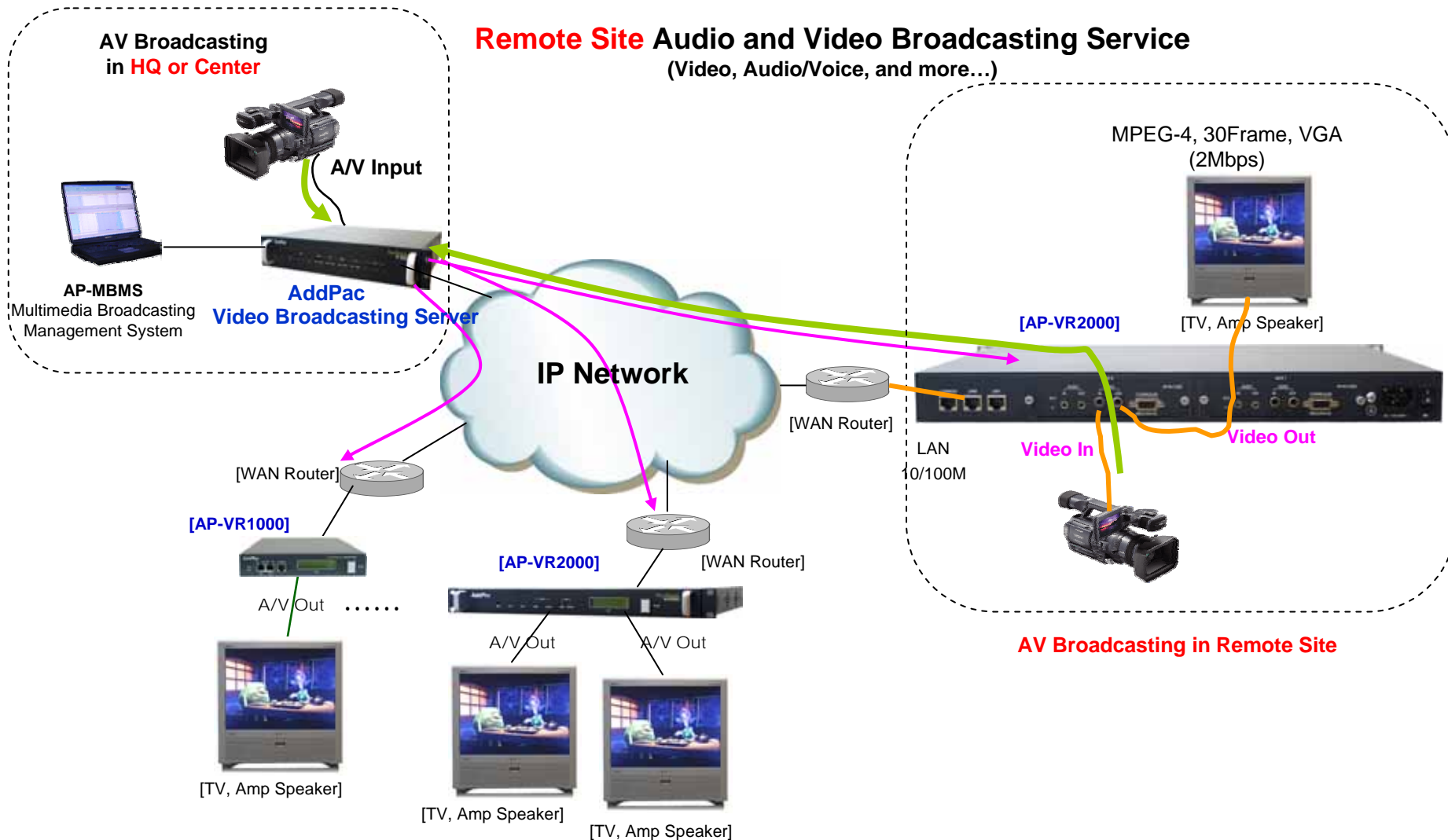
Audio/Video Real-time Broadcasting

AP-VR2000 Video Service Router



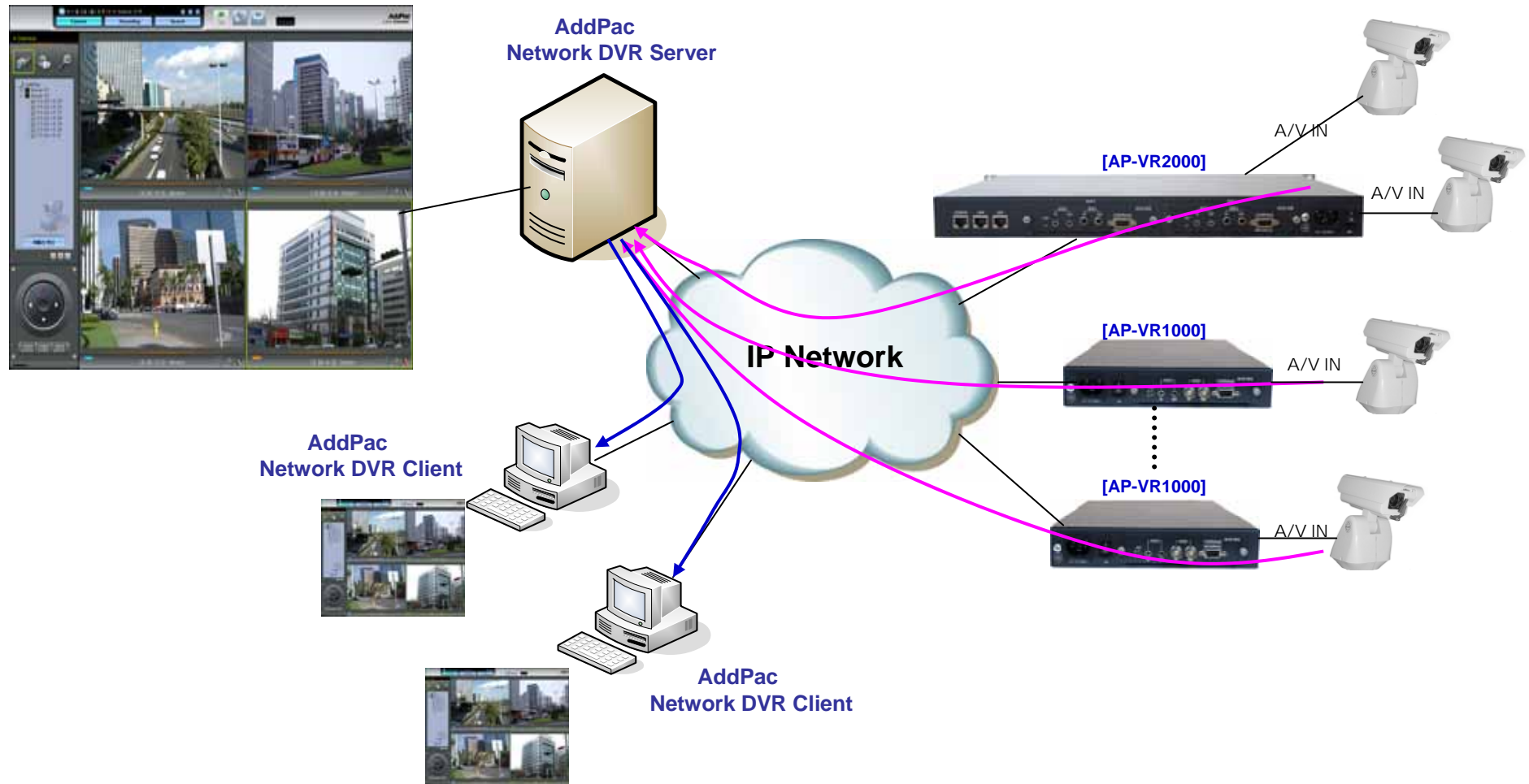
Audio/Video Real-time Broadcasting

AP-VR2000 Video Service Router



Network Surveillance

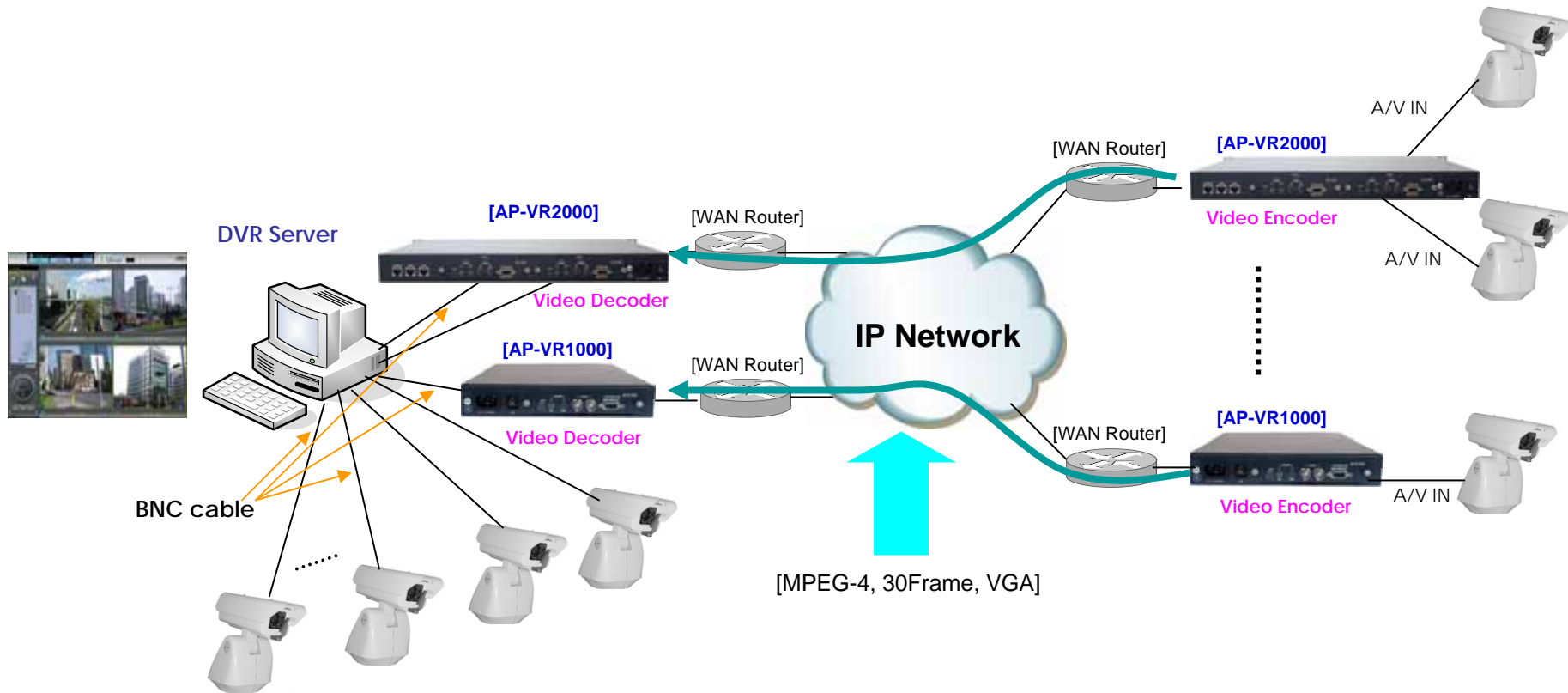
AP-VR2000 Video Service Router



Video Line Extension

AP-VR2000 Video Service Router

Video Encoder



Ordering Information

- **AP-VR2000 Video Service Router Hardware**
 - AP-VR2000 Video Service Router Main Body
 - High-performance 64bit RISC CPU with Programmable DSP Architecture
 - Two(2) Module Slots for Video and Network Interface Cards
 - 2-ports 10/100Mbps Fast Ethernet and 1-port RS-232C Console
 - Including Network Cable Set & Ext. Power Supply, etc.
 - Optional Modules : AP-AV1000, etc
- **Built-in APOS Internetworking Software for AP-VR2000**
- **Including 1 Year Hardware Warranty**
- **Product Documents**
 - Install and Operation Guide (PDF)
- **Pricing**
 - AddPac Technology Regional Sales Manager
 - Authorized Sales and Marketing Representatives
 - Please Contact www.addpac.com



AP-VR2000 Video Service Router

Thank you!

AddPac Technology Co., Ltd.
Sales and Marketing

Phone +82.2.568.3848 (KOREA)

FAX +82.2.568.3847 (KOREA)

E-mail sales@addpac.com