



AP-PCT300 Full HD PTT Control IP Terminal

High Performance PTT (Push to Talk) Control IP Terminal ,
Dispatch Terminal Solution

Product Overview



AddPac

AddPac Technology

Sales and Marketing

www.addpac.com

High Quality, High Resolution



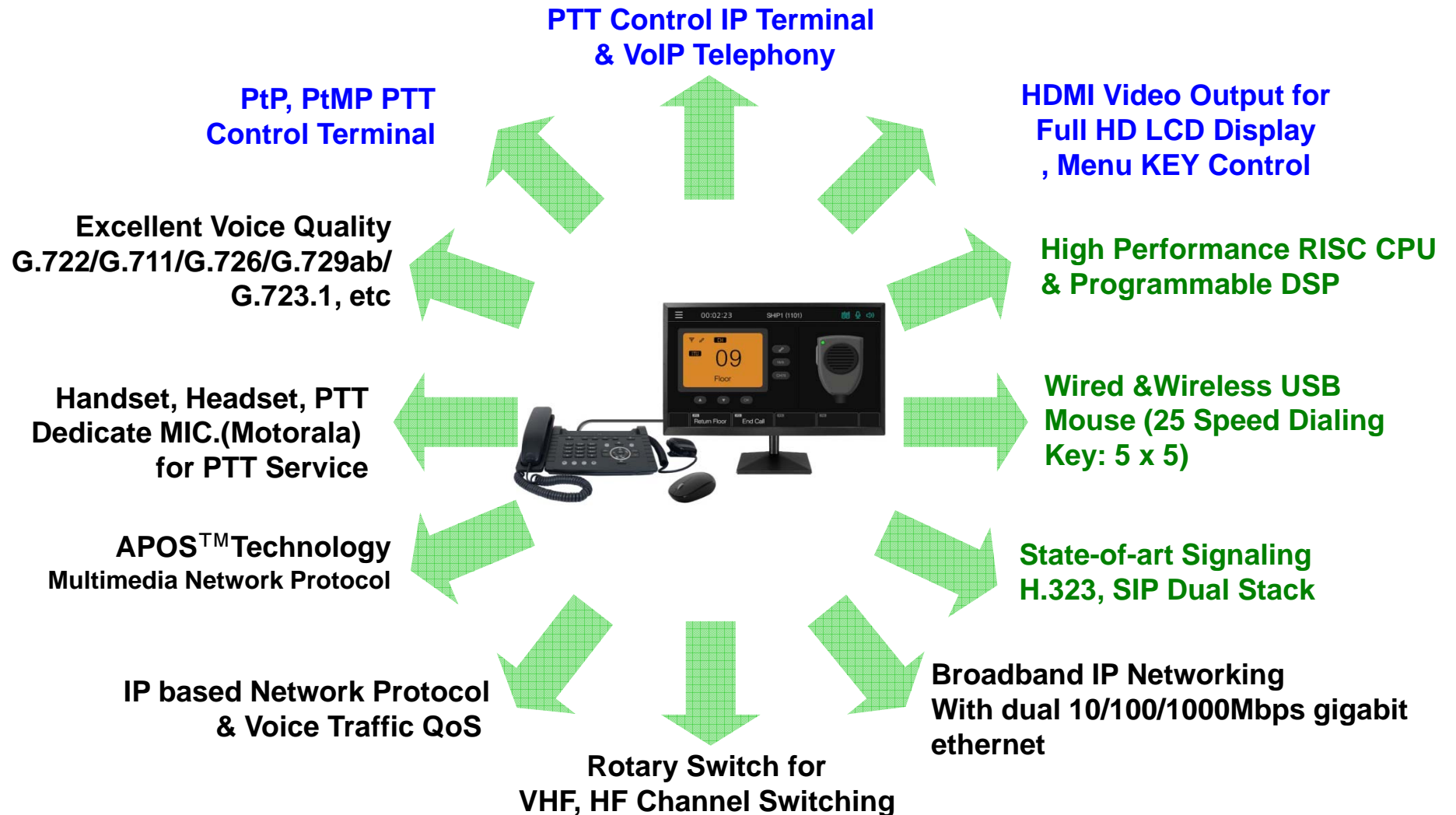
Contents

- Product Overview
- Hardware Specification
- Software Service
- Voice PTT (Push to Talk) Service
- Audio & Voice Service and Features
- Network Service and Features
- Application Area
- Ordering Information

Product Overview

- PTT (Push to Talk) Control IP Terminal Solution
- PTT : Handset, Headset, PTT Dedicate MIC., Rotary Switch for Frequency Change
- RoIP (Radio over IP) Control Terminal Solution for Call Center
- High-Quality Audio and Voice Service
- High Performance Programmable DSPs
- HDMI Video Output Support for Full HD Monitor Display
- H.323 and SIP Dual VoIP Signaling Protocols
- Various VoIP Codec (G.711,G.726,G.729ab,etc) Support for Satellite RoIP Service
- Two(2) 10/100/1000Mbps Gigabit Ethernet
- RTSP H.264 Video Decoder (Full HD, HD, D1)
- Call Status Monitoring Support
- XML Browser Support
- Firmware Upgradeable Architecture
- Video Solution with Outstanding Network Service Capability
- Audio/Video Privacy Protection
- USB Interface Support for Mouse Control

Product Highlights



Hardware Specification

High-end
DSP

- High-end Programmable DSP Hardware Architecture
- High quality Audio and Voice Interface
 - Stereo Audio Input & Output Connector
- Network Interface
 - Two(2) 10/100/1000Mbps Gigabit Ethernet
 - One(1) RS-232C Console
- USB Interface
- HDMI Video Output for External Full HD Monitor Display
- Power Supply
 - External Power Adaptor
- PTT Mic. Interface : Ex. Motorola PTT MIC.
- Rotary Switch for VHF, HF Frequency Switching

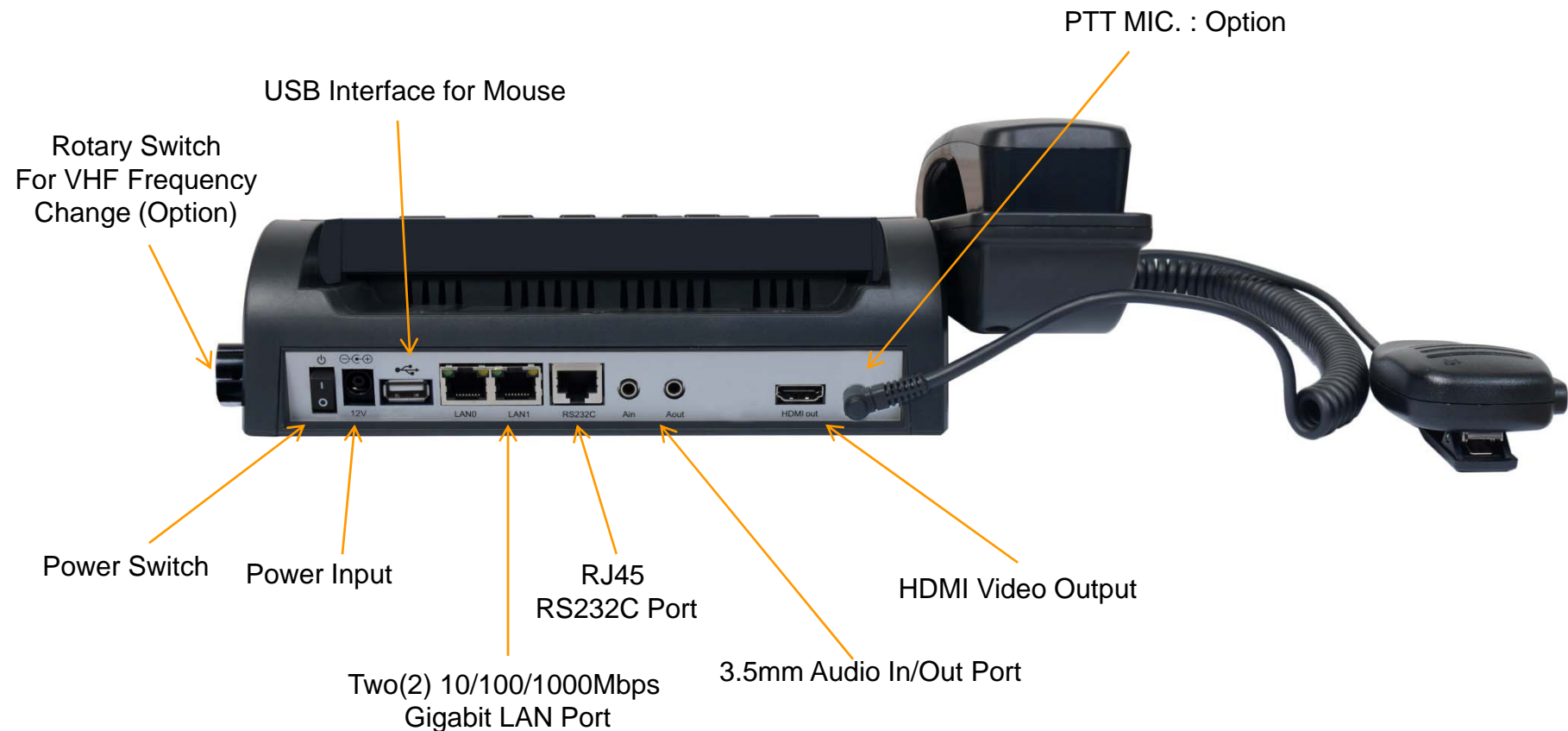
Hardware Specification

High-end
DSP



Hardware Specification

High-end
DSP



Hardware Specification

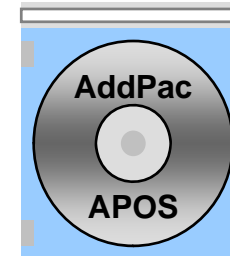
High-end
DSP



Rotary Switch
For VHF Frequency
Change (Option)

Software Service

- Built-in AddPac APOS Internetworking Software
 - Scalability, Functionality, and Stability Features
 - Voice Traffic QoS Control
- Programmable Audio, and Voice Services
 - Audio Codec
- Firmware Upgradeable DSP Architecture
- OSD (On-screen Display) Function Support
- Industry Standard IP based Network Protocol Features
- RoIP (Radio over IP) PTT Service Features



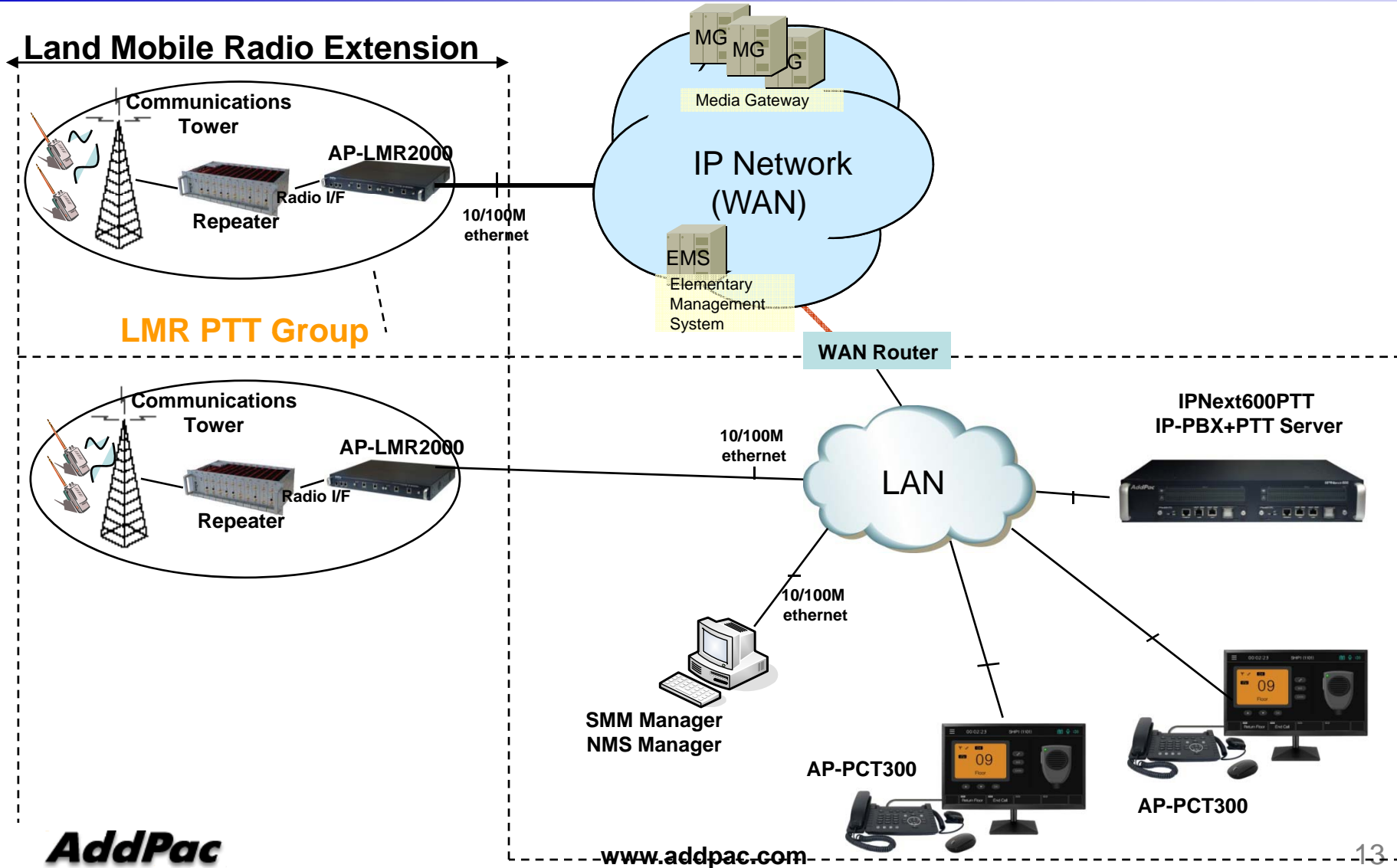


Voice PTT (Push-to-Talk) Service Features

Contents

- PTT Service Network Diagram
- AddPac PTT Service Features
- AP-PCT200 Voice PTT Service UI
 - PTT Idle Mode
 - PTT Call Mode
 - PTT Call Mode (Dialing)
 - PTT Waiting Mode
 - PTT Mode
 - PTT Close Mode

PTT Service Network Diagram



AddPac PTT Service Features

- **Various VoIP & PTT Call Mode Support**
 - VoIP Call & PTT Call Support
 - Call Waiting Support and Incoming Call Indication
 - VoIP Call and PTT Call Mode Change
 - Various PTT Call Mode Support
 - Point-to-Point PTT Call, Group PTT Call, Emergency PTT Call
 - PTT Call Connection using Send/PTT Button
- **Status Display & Indication Function**
 - Various Call Status Display using ICON
 - Call, SMS, Wi-Fi Antenna, PTT Call Status
 - Status Indication using LED
 - Absent Call, Emergency Call
 - Status Indication using Sound
 - PTT Call Start/Incoming Call, Wi-Fi connection and release

AddPac PTT Service Features

- PTT Group List Display Function
 - PTT Member List Display
 - Overall, Personal, Group, Emergency List Display
 - Group Presence Status Display
 - PTT Group Presence Status Display (Option : Presence Server Required)
 - Automatic Presence Status Display
 - Manual Presence Status Display
- VoIP Call List Display
 - Outbound/Incoming/Absent Call List
 - VoIP Call Phone Book
 - VoIP Call List Delete and Redialing Support



AP-PCT300 PTT(Push-to-Talk) Service UI

PTT Idle Mode

1101 Ship1	1102 Ship2	1103 Ship3	1104 Ship4	1105 Ship5
1106 Ship6	1107 Ship7	1108 Ship8	1109 Ship9	1110 Ship10



PTT Call Mode by
Speed Dial Press

PTT Call Mode

1101 Ship1	1102 Ship2	1103 Ship3	1104 Ship4	1105 Ship5
1106 Ship6	1107 Ship7	1108 Ship8	1109 Ship9	1110 Ship10

1101 Ship1	1102 Ship2	1103 Ship3	1104 Ship4	1105 Ship5
1106 Ship6	1107 Ship7	1108 Ship8	1109 Ship9	1110 Ship10



PTT Call Mode (Dialing)

PTT Dialing Number : Ship1(1101)



Push-to-Talk Mode

Push-to-Talk
(F1 Softkey Press)



PTT Close Mode

PTT Close
(F2 Softkey Press & OK)



Audio & Voice Service and Features

- Audio & Voice Networking Interface
 - Audio Input/Output Port (2 x 3.5mm Stereo Female Connector)
- VoIP based Signaling Protocol Support
 - H.323, SIP Multiple Signaling Protocol Stack
 - H.323 Gateway, Gatekeeper Interworking Support
- High-performance Audio & Voice Codec Support
 - Line IN/OUT : G.711, G.726, etc
- Enhanced QoS Management Features for Voice Traffics

Network Service and Features

- **Basic Network Protocols**
 - ARP, IP, IPv6, TCP, UDP, ICMP, ICMPv6, SCTP, IGMP, MLD
- **Routing Protocol**
 - IPv4 : Static
 - IPv6 : Static
- **Service Protocol**
 - FTP, Telnet, TFTP, DHCP Server/Relay, SNMP Server
 - CDP (Cisco Discovery Protocol)
 - DNS Resolver , DDNS(nsupdate)
 - Bridge
 - Syslog
 - IP/IPv6 policy control (QoS)
 - VPDN (Virtual Private Dial-up Network : L2TP Server)

Network Service and Features

- **IPv4/IPv6 Interworking**
 - NAT/PAT for IPv4
 - IP connect (formerly ip-share) and device cascade for IPv4
 - IP/IP, IP/GRE tunneling
 - NAT-PT
 - 6to4, Autoconfig tunneling
- **IPv4 Address Configuration**
 - Fixed (Static)
 - DHCP
 - PPPoE
- **IPv6 Address Configuration**
 - Fixed (Static)
 - EUI-64
 - Autoconfig (Neighbor Advertisement and Solicitation)

Network Service and Features

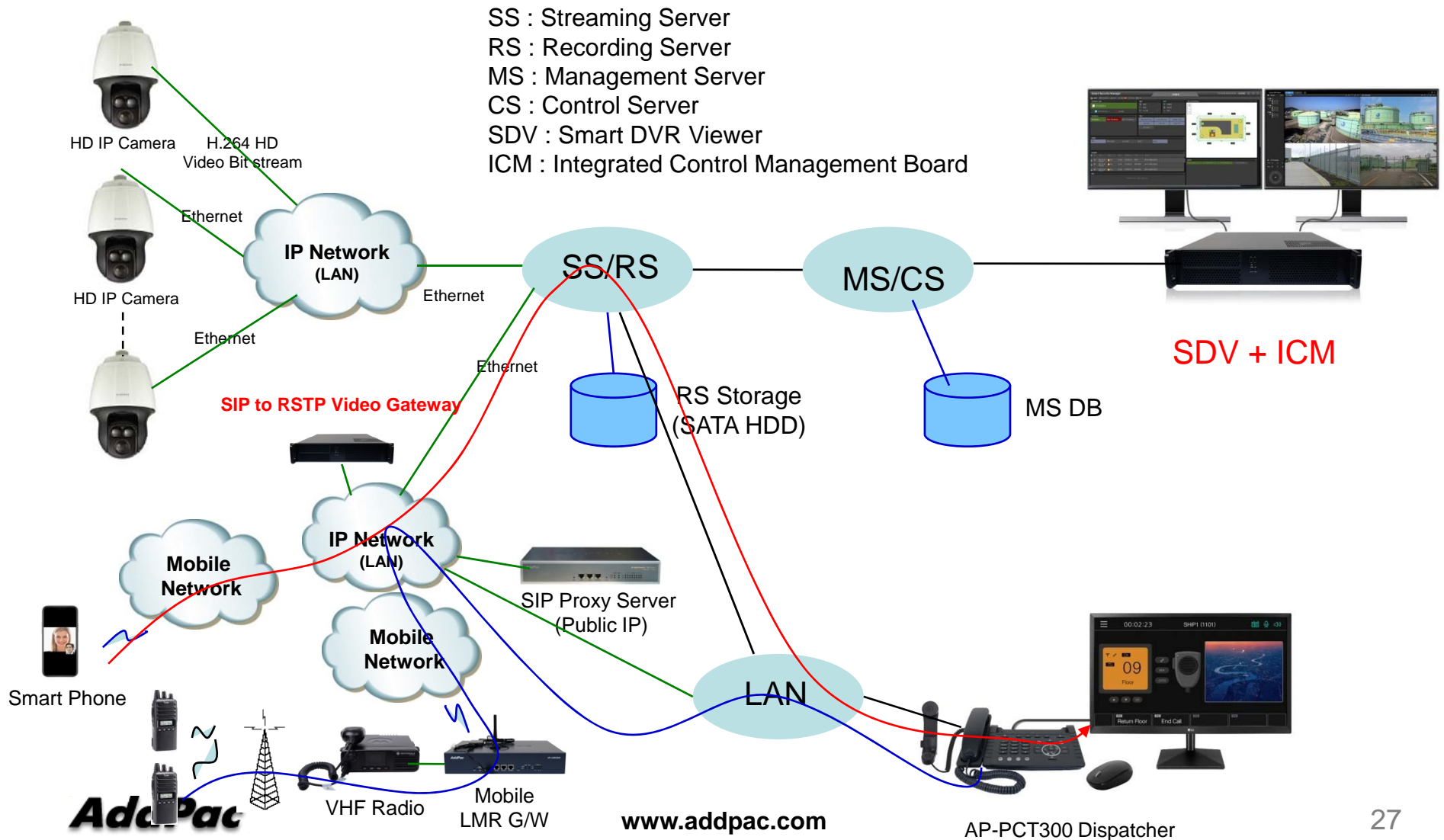
- **Miscellaneous**
 - Cisco Style CLI
 - Standard & Extended IPv4/IPv6 Access List
 - Multi-level User Account Management
 - IP accounting
 - fsh (Embedded file system shell)
 - STUN Client

Network Service and Features

- **SNMP MIBs**
 - MIB-II
 - RMON MIBs (Statistics, History, Alarm, Hosts Group)
 - RFC2465 Management Information Base for IP Version 6: Textual Conventions and General Group
 - RFC2466 Management Information Base for IP Version 6: ICMPv6 Group
 - RFC2452 IP Version 6 Management Information Base for the Transmission Control Protocol
 - RFC2454 IP Version 6 Management Information Base for the User Datagram Protocol
 - AddPac Enterprise MIBs
 - etc

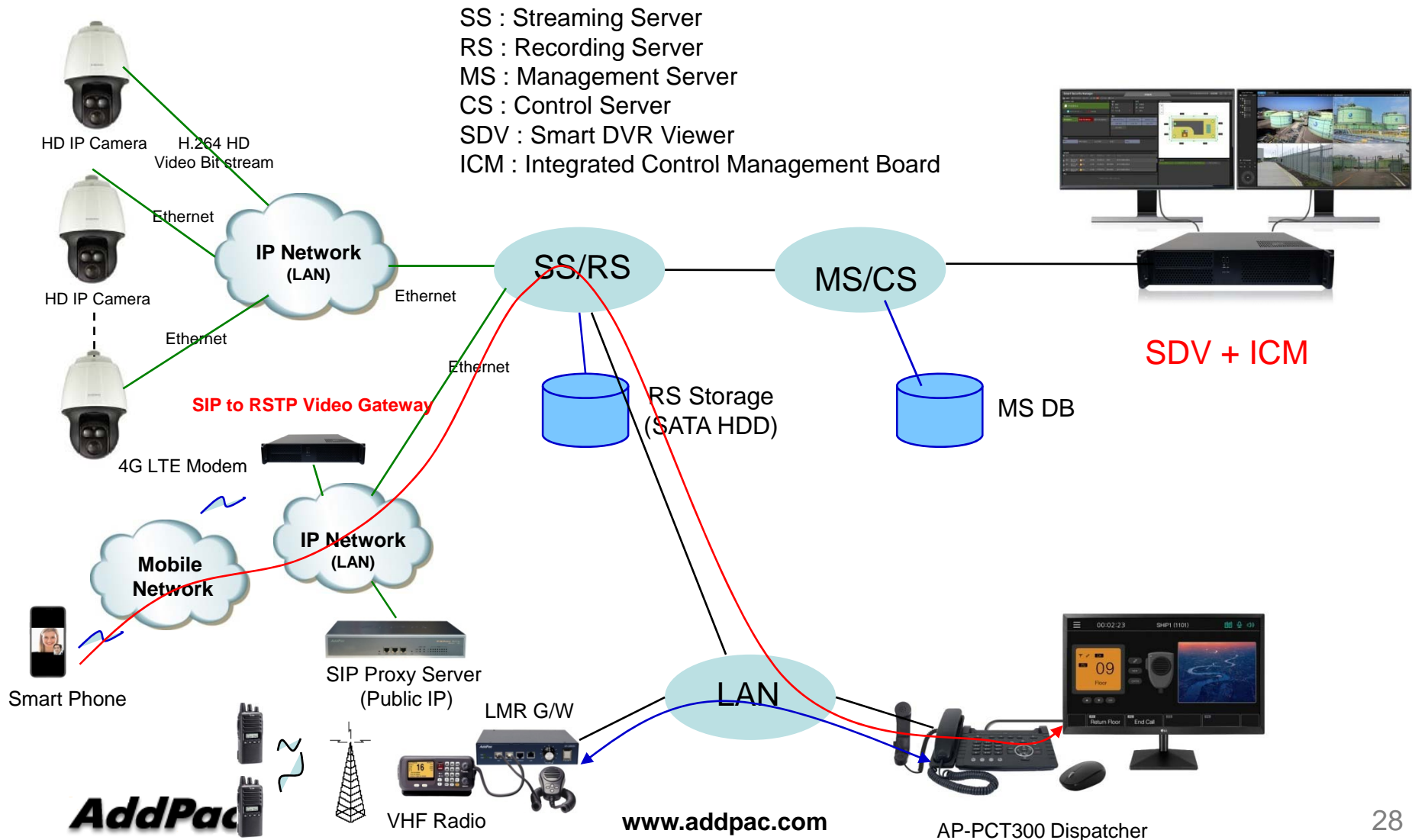
AP-PCT300 PTT Control IP Terminal

RoIP Service + RTSP CCTV Video Display



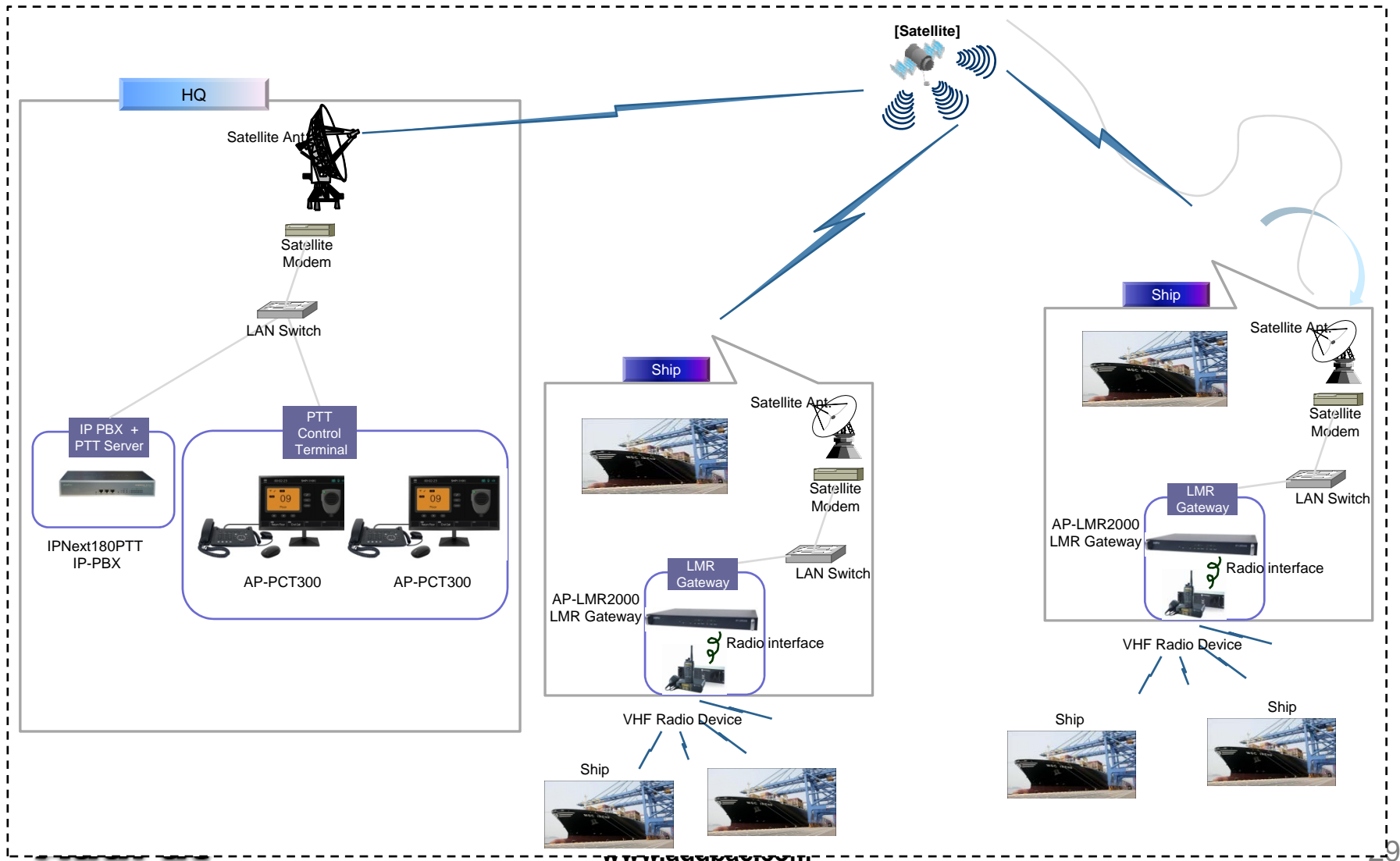
AP-PCT300 PTT Control IP Terminal

RoIP Service + RTSP CCTV Video Display



AP-PCT300 PTT Control IP Terminal

Satellite RoIP Service Application



Ordering Information

- **AP-PCT300 PTT Control IP Terminal Hardware**
 - RISC Microprocessor with High-end Programmable DSP Architecture
 - 3.5mm Audio Input/Output
 - 2-ports 10/100/1000Mbps Gigabit Ethernet and 1-port RS-232C Console
 - Rotary Switch for VHF, HF Frequency Channel Switch
 - 1-Port HDMI Video Output Port for Full HD Monitor Display
 - 1-Port PTT MIC Interface for Motorola PTT MIC. etc.
 - 1-Port USB Interface
 - Including Network Cable Set & Ext. Power Supply, etc.
- **Built-in APOS Internetworking Software for AP-PCT300**
- **Including 1 Year Hardware Warranty**
- **Product Documents**
 - Install and Operation Guide (PDF)
- **Pricing**
 - AddPac Technology Regional Sales Manager
 - Authorized Sales and Marketing Representatives
 - Please Contact www.addpac.com



Thank you!

AddPac Technology Co., Ltd.
Sales and Marketing

Phone +82.2.568.3848 (KOREA)

FAX +82.2.568.3847 (KOREA)

E-mail sales@addpac.com