

AP-PCT200

PTT Control IP Terminal

High Performance PTT (Push to Talk) Control IP Terminal Solution

Product Overview



AddPac

AddPac Technology

Sales and Marketing

www.addpac.com

High Quality, High Resolution



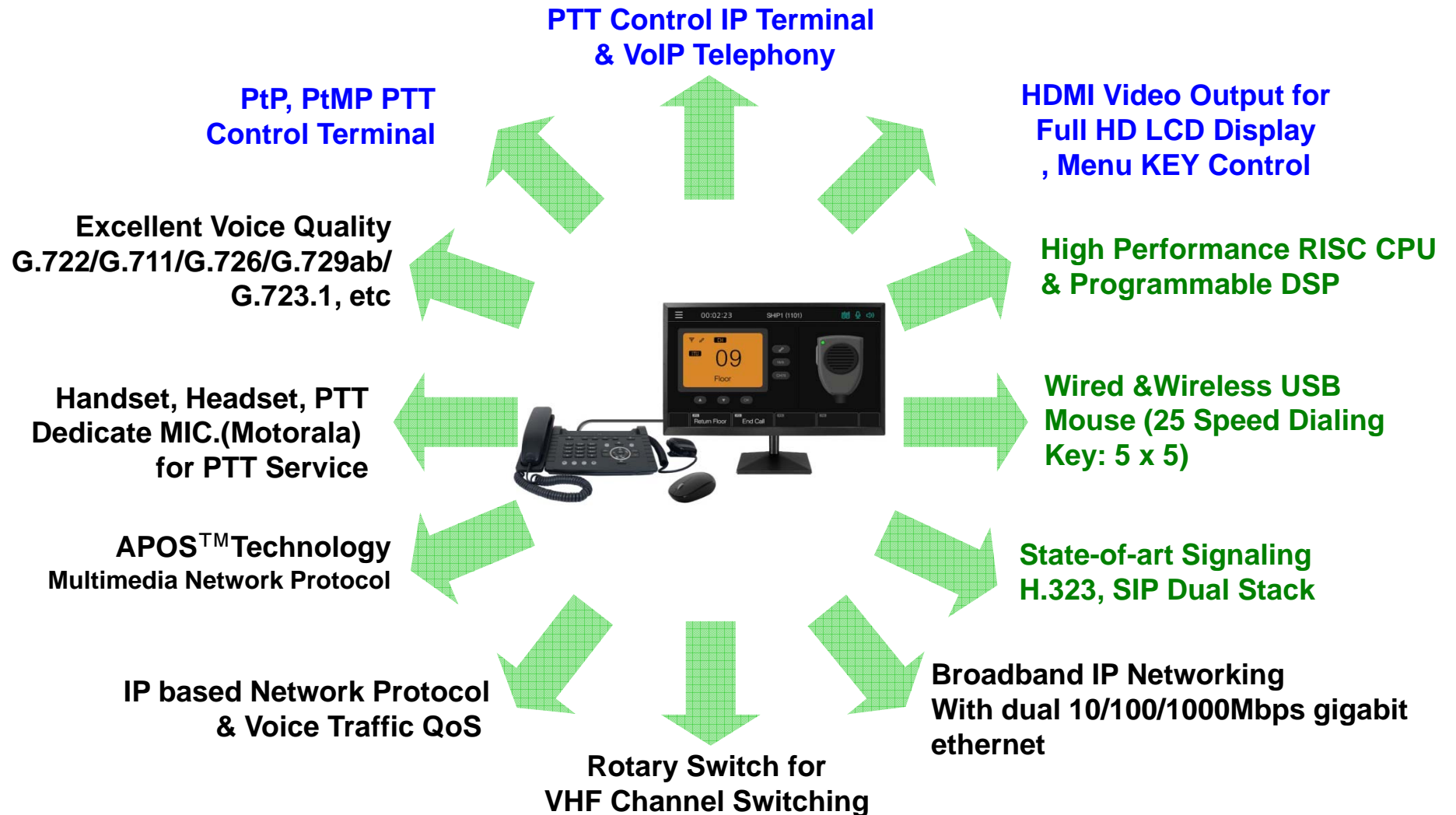
Contents

- Product Overview
- Hardware Specification
- Software Service
- Voice PTT (Push to Talk) Service
- Audio & Voice Service and Features
- Network Service and Features
- Application Area
- Ordering Information

Product Overview

- PTT (Push to Talk) Control IP Terminal Solution
- PTT : Handset, Headset, PTT Dedicate MIC., Rotary Switch for Frequency Change
- RoIP (Radio over IP) Control Terminal Solution for Call Center
- High-Quality Audio and Voice Service
- High Performance Programmable DSP
- HDMI Video Output Support for Full HD Monitor Display
- H.323 and SIP Dual VoIP Signaling Protocols
- Various VoIP Codec (G.711,G.726,G.729,etc) Support for Satellite RoIP Service
- Two(2) 10/100/1000Mbps Gigabit Ethernet
- Call Status Monitoring Support
- XML Browser Support
- Firmware Upgradeable Architecture
- Video Solution with Outstanding Network Service Capability
- Audio/Video Privacy Protection
- USB Interface Support for Mouse Control

Product Highlights



Hardware Specification

High-end
DSP

- High-end Programmable DSP Hardware Architecture
- High quality Audio and Voice Interface
 - Stereo Audio Input & Output Connector
- Network Interface
 - Two(2) 10/100/1000Mbps Gigabit Ethernet
 - One(1) RS-232C Console
- USB Interface
- HDMI Video Output for External Full HD Monitor Display
- Power Supply
 - External Power Adaptor
- PTT Mic. Interface : Ex. Motorola PTT MIC.
- Rotary Switch for VHF Frequency Switching

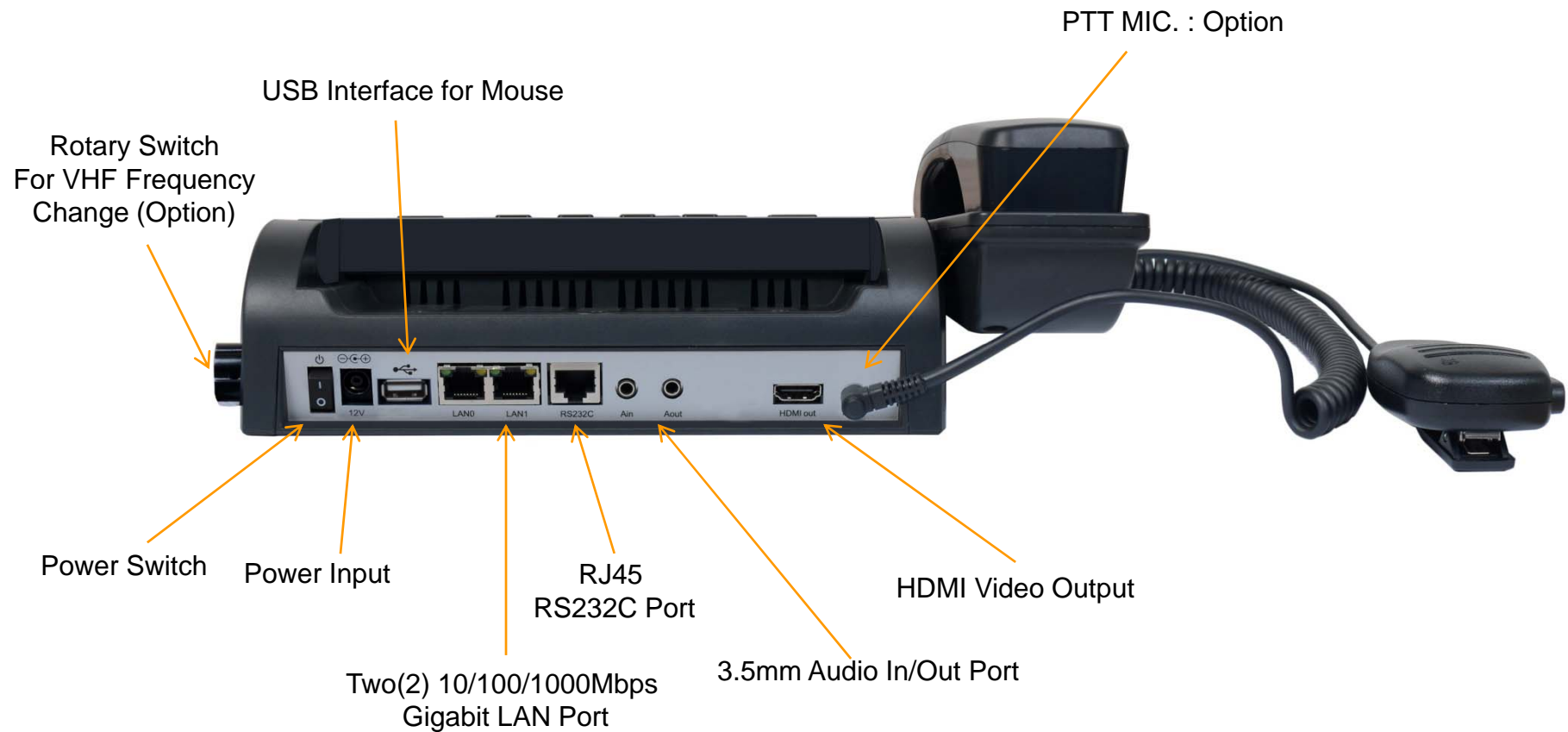
Hardware Specification

High-end
DSP



Hardware Specification

High-end
DSP



Hardware Specification

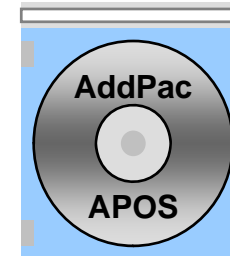
High-end
DSP



Rotary Switch
For VHF Frequency
Change (Option)

Software Service

- **Built-in AddPac APOS Internetworking Software**
 - Scalability, Functionality, and Stability Features
 - Voice Traffic QoS Control
- **Programmable Audio, and Voice Services**
 - Audio Codec
- **Firmware Upgradeable DSP Architecture**
- **OSD (On-screen Display) Function Support**
- **Industry Standard IP based Network Protocol Features**
- **RoIP (Radio over IP) PTT Service Features**



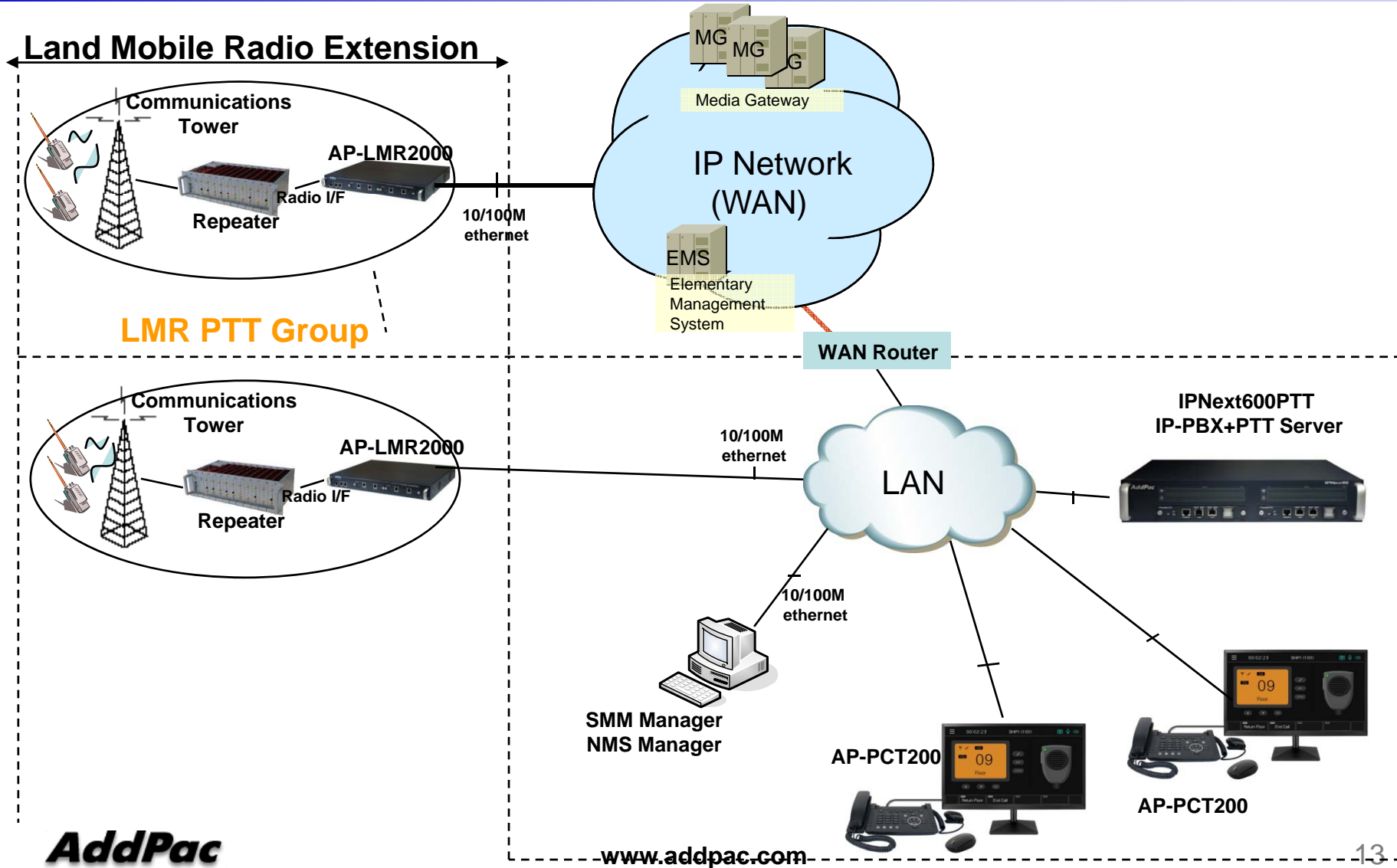


Voice PTT (Push-to-Talk) Service Features

Contents

- PTT Service Network Diagram
- AddPac PTT Service Features
- AP-PCT200 Voice PTT Service UI
 - PTT Idle Mode
 - PTT Call Mode
 - PTT Call Mode (Dialing)
 - PTT Waiting Mode
 - PTT Mode
 - PTT Close Mode

PTT Service Network Diagram



AddPac PTT Service Features

- **Various VoIP & PTT Call Mode Support**
 - VoIP Call & PTT Call Support
 - Call Waiting Support and Incoming Call Indication
 - VoIP Call and PTT Call Mode Change
 - Various PTT Call Mode Support
 - Point-to-Point PTT Call, Group PTT Call, Emergency PTT Call
 - PTT Call Connection using Send/PTT Button
- **Status Display & Indication Function**
 - Various Call Status Display using ICON
 - Call, SMS, Wi-Fi Antenna, PTT Call Status
 - Status Indication using LED
 - Absent Call, Emergency Call
 - Status Indication using Sound
 - PTT Call Start/Incoming Call, Wi-Fi connection and release

AddPac PTT Service Features

- PTT Group List Display Function
 - PTT Member List Display
 - Overall, Personal, Group, Emergency List Display
 - Group Presence Status Display
 - PTT Group Presence Status Display (Option : Presence Server Required)
 - Automatic Presence Status Display
 - Manual Presence Status Display
- VoIP Call List Display
 - Outbound/Incoming/Absent Call List
 - VoIP Call Phone Book
 - VoIP Call List Delete and Redialing Support



AP-PCT200 PTT(Push-to-Talk) Service UI

PTT Idle Mode

| | | | | |
|---------------|---------------|---------------|---------------|----------------|
| 1101 Ship1 | 1102 Ship2 | 1103 Ship3 | 1104 Ship4 | 1105 Ship5 |
| 1106 Ship6 | 1107 Ship7 | 1108 Ship8 | 1109 Ship9 | 1110 Ship10 |
| | | | | |
| | | | | |



PTT Call Mode by
Speed Dial Press

PTT Call Mode

| | | | | |
|---------------|---------------|---------------|---------------|----------------|
| 1101 Ship1 | 1102 Ship2 | 1103 Ship3 | 1104 Ship4 | 1105 Ship5 |
| 1106 Ship6 | 1107 Ship7 | 1108 Ship8 | 1109 Ship9 | 1110 Ship10 |
| | | | | |
| | | | | |
| | | | | |

| | | | | |
|---------------|---------------|---------------|---------------|----------------|
| 1101 Ship1 | 1102 Ship2 | 1103 Ship3 | 1104 Ship4 | 1105 Ship5 |
| 1106 Ship6 | 1107 Ship7 | 1108 Ship8 | 1109 Ship9 | 1110 Ship10 |
| | | | | |
| | | | | |
| | | | | |



PTT Call Mode (Dialing)

PTT Dialing Number : Ship1(1101)



Push-to-Talk Mode

Push-to-Talk
(F1 Softkey Press)



PTT Close Mode

PTT Close
(F2 Softkey Press & OK)



Audio & Voice Service and Features

- **Audio & Voice Networking Interface**
 - Audio Input/Output Port (2 x 3.5mm Stereo Female Connector)
- **VoIP based Signaling Protocol Support**
 - H.323, SIP Multiple Signaling Protocol Stack
 - H.323 Gateway, Gatekeeper Support
- **High-performance Audio & Voice Codec Support**
 - Line IN/OUT : G.711, G.726, G.729A, G.723.1 Audio Codec, etc
- **Enhanced QoS Management Features for Voice Traffics**

Network Service and Features

- **Basic Network Protocols**
 - ARP, IP, IPv6, TCP, UDP, ICMP, ICMPv6, SCTP, IGMP, MLD
- **Routing Protocol**
 - IPv4 : Static
 - IPv6 : Static
- **Service Protocol**
 - FTP, Telnet, TFTP, DHCP Server/Relay, SNMP Server
 - CDP (Cisco Discovery Protocol)
 - DNS Resolver , DDNS(nsupdate)
 - Bridge
 - Syslog
 - IP/IPv6 policy control (QoS)
 - VPDN (Virtual Private Dial-up Network : L2TP Server)

Network Service and Features

- **IPv4/IPv6 Interworking**
 - NAT/PAT for IPv4
 - IP connect (formerly ip-share) and device cascade for IPv4
 - IP/IP, IP/GRE tunneling
 - NAT-PT
 - 6to4, Autoconfig tunneling
- **IPv4 Address Configuration**
 - Fixed (Static)
 - DHCP
 - PPPoE
- **IPv6 Address Configuration**
 - Fixed (Static)
 - EUI-64
 - Autoconfig (Neighbor Advertisement and Solicitation)

Network Service and Features

- **Miscellaneous**
 - Cisco Style CLI
 - Standard & Extended IPv4/IPv6 Access List
 - Multi-level User Account Management
 - IP accounting
 - fsh (Embedded file system shell)
 - STUN Client

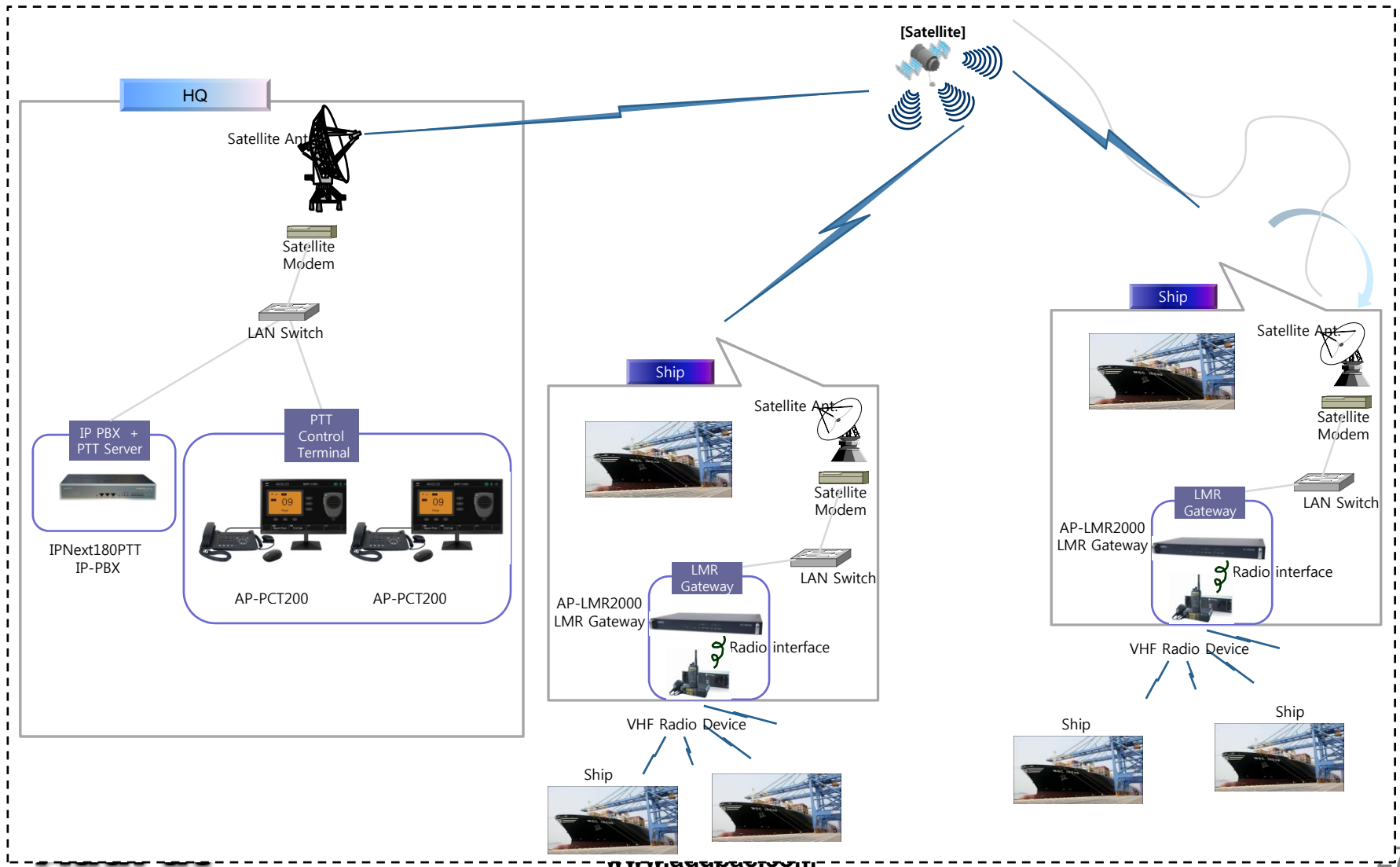
Network Service and Features

AP-PCT200 PTT Control IP Terminal

- **SNMP MIBs**
 - MIB-II
 - RMON MIBs (Statistics, History, Alarm, Hosts Group)
 - RFC2465 Management Information Base for IP Version 6: Textual Conventions and General Group
 - RFC2466 Management Information Base for IP Version 6: ICMPv6 Group
 - RFC2452 IP Version 6 Management Information Base for the Transmission Control Protocol
 - RFC2454 IP Version 6 Management Information Base for the User Datagram Protocol
 - AddPac Enterprise MIBs
 - etc

AP-PCT200 PTT Control IP Terminal

Satellite RoIP Service Application



Ordering Information

- **AP-PCT200 PTT Control IP Terminal Hardware**
 - RISC Microprocessor with High-end Programmable DSP Architecture
 - 3.5mm Audio Input/Output
 - 2-ports 10/100/1000Mbps Gigabit Ethernet and 1-port RS-232C Console
 - Rotary Switch for VHF Frequency Channel Switch
 - 1-Port HDMI Video Output Port for Full HD Monitor Display
 - 1-Port PTT MIC Interface for Motorola PTT MIC. etc.
 - 1-Port USB Interface
 - Including Network Cable Set & Ext. Power Supply, etc.
- **Built-in APOS Internetworking Software for AP-PCT200**
- **Including 1 Year Hardware Warranty**
- **Product Documents**
 - Install and Operation Guide (PDF)
- **Pricing**
 - AddPac Technology Regional Sales Manager
 - Authorized Sales and Marketing Representatives
 - Please Contact www.addpac.com



Thank you!

AddPac Technology Co., Ltd.
Sales and Marketing

Phone +82.2.568.3848 (KOREA)

FAX +82.2.568.3847 (KOREA)

E-mail sales@addpac.com