

# AP-EVG100

## Emergency Call SIP HD Video Gateway

High Performance Emergency Call SIP HD Video Gateway Solution

### Product Overview



**AddPac**

**AddPac Technology**

Sales and Marketing

# Contents

- Product Overview
- Hardware Specification
- Software Service
- Video Service and Features
- Network Service and Features
- Application Area
- Ordering Information

# Product Overview

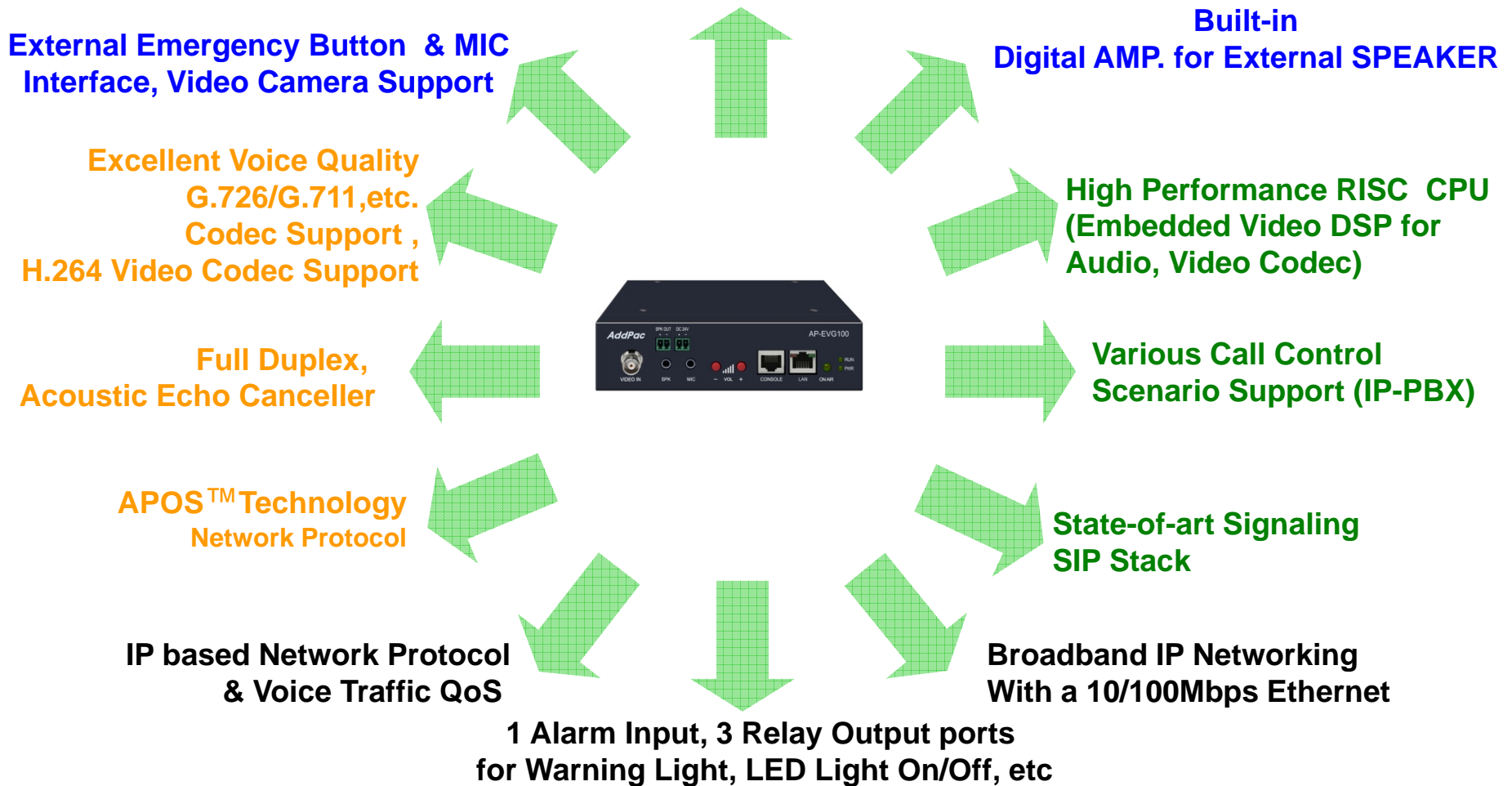
## AP-EVG100 Emergency Call SIP HD Video Gateway

- High Performance Emergency Call Video Gateway Solution
- Emergency Call Button, Camera, MIC Separated SIP Video Gateway Solution
- H.264, MPEG4, H.263 Video Codec Support
- External AHD Video Camera Interface Support , HD Level Video Support
- Full Duplex Voice Communication
- One(1) 10/100Mbps Fast Ethernet
- Internal Built-in Digital AMP. (40Watt at 8ohm) Support
- Alarm Input Ports, Relay Output Ports, Speaker Output Interface Ports for External Loud Speaker, CCTV LED Light On/Off Control, Warning Light On/Off Control
- SIP VoIP Signaling Stack Embedded
- RTSP, RTP Protocol Support
- VoIP Codec : G.711, G.726, etc
- Powerful Acoustic Echo Canceller Chip Embedded
- Powerful Network Protocols (PPPoE, DHCP, Static Routing, etc)
- Firmware Upgradeable Architecture
- Advanced Voice QoS Mechanism

# Product Highlights

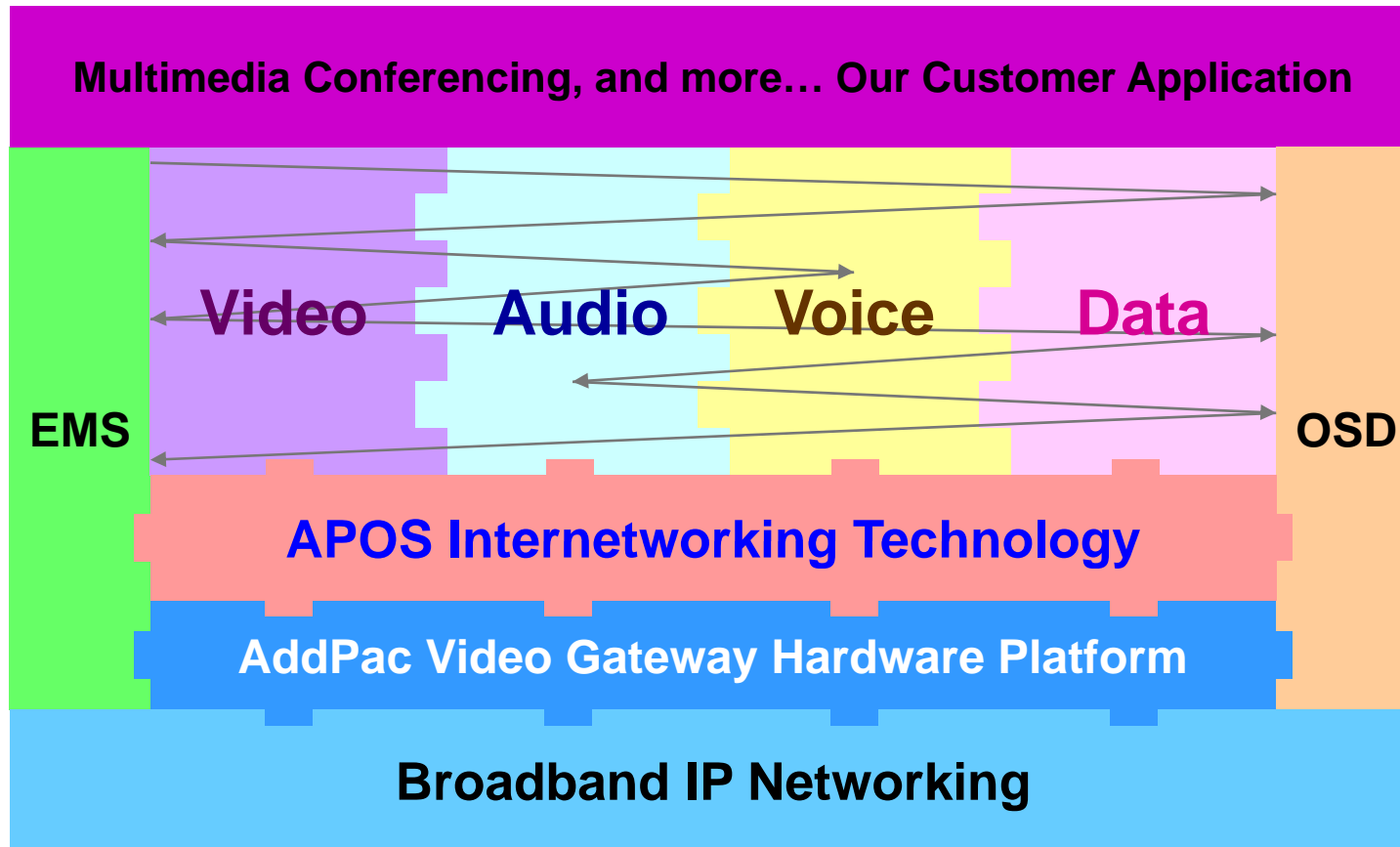
AP-EVG100 Emergency Call SIP HD Video Gateway

## Outdoor Emergency Call SIP Video Gateway Solution



# Multimedia Service

AP-EVG100 Emergency Call SIP HD Video Gateway



- APOS : AddPac Internetworking Operating System
- OSD : On- Screen Display
- EMS : Element Management System

# Hardware Specification

AP-EIG100 Emergency Call SIP HD Video Gateway

RISC  
CPU

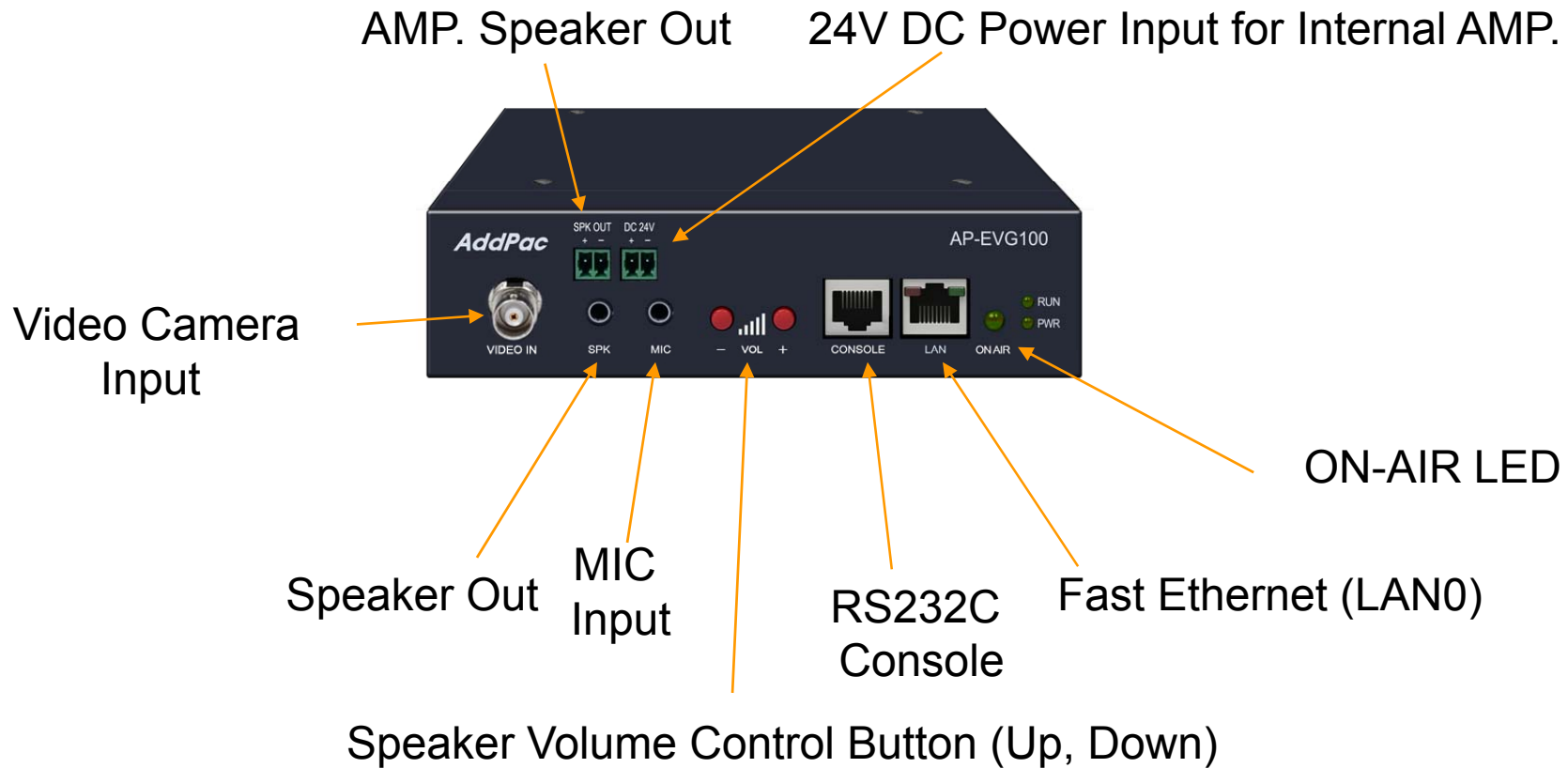
High-end  
DSP

- RISC Microprocessor Computing Power
- High-end Programmable Video DSP Hardware Architecture
- High Quality Video/Audio Encoding Service
- One(1) 10/100Mbps Fast Ethernet (RJ45)
- One(1) RS-232C Interface (RJ45)
- AHD Video Camera Interface Support
- SPK/MIC Audio Interface Support
- Volume Control Button Support (Up, Down)
- External Power Supply Support
- Option : 40Watt Digital AMP. Built-in Speaker Output
- I/O Interface (Alarm Input 1Port, Relay Output 3Port)

# Hardware Specification

AP-EVG100 Emergency Call SIP HD Video Gateway

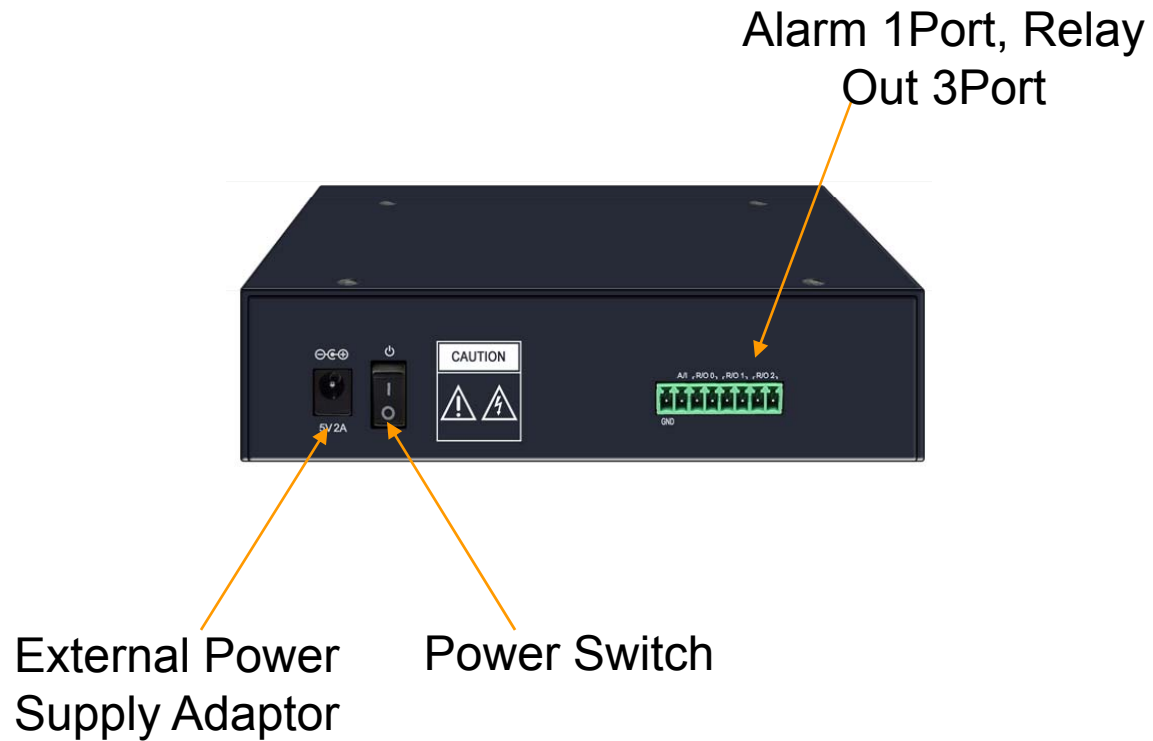
## Front Side



# Hardware Specification

AP-EVG100 Emergency Call SIP HD Video Gateway

## Back Side

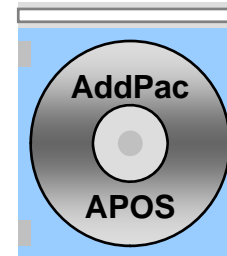




# Software Service

AP-EVG100 Emergency Call SIP HD Video Gateway

- Built-in AddPac APOS Internetworking Software
  - Scalability, Functionality, and Stability Features
  - Audio Traffic QoS Control
- Programmable Video, Audio, and Voice Services
  - Audio, and Voice Codec
- Firmware Upgradeable Architecture
- Industry Standard IP based Network Protocol Features



# Video Service and Features

AP-EVG100 Emergency Call SIP HD Video Gateway

- High-performance Video Codec Support
  - H.264, MPEG4, H.263, etc
- Image Resolution Support
  - Video Encoding : HD (1280 x 720), VGA(640x480), QVGA(320x240)
- Up to 30fps with HD Resolution
- 128Kbps to 4 Mbps Operating Video Traffic Bandwidth
- Rate Control for Video Traffic QoS
  - Ensuring Optimized Quality
  - Frame Rate with Limited Bandwidth
- High-end Error Resilient Against Various Packet Error

# Network Service and Features

## AP-EVG100 Emergency Call SIP HD Video Gateway

- Network Managements
  - Standard SNMP Agent (MIB v2) Support
  - Remote Management using Console, Telnet
  - Web based Management using HTTP Server Interface
- Security Functions
  - Standard & Extended IP Access List
  - Enable/Disable for Specific Network Protocols
  - Multi-level User Account Management
  - Auto-disconnect for Telnet/Console Sessions
  - PPP User Authentication Supports (PAP & CHAP)
- Operation & Managements
  - System Performance Analysis for Process, CPU, Connection Interface
  - Debugging, System Auditing, and Diagnostics Support
  - System Booting and Auto-rebooting with Watchdog Feature
  - System Managements with Data Logging
  - IP Traffic Statistics with Accounting

# Network Service and Features

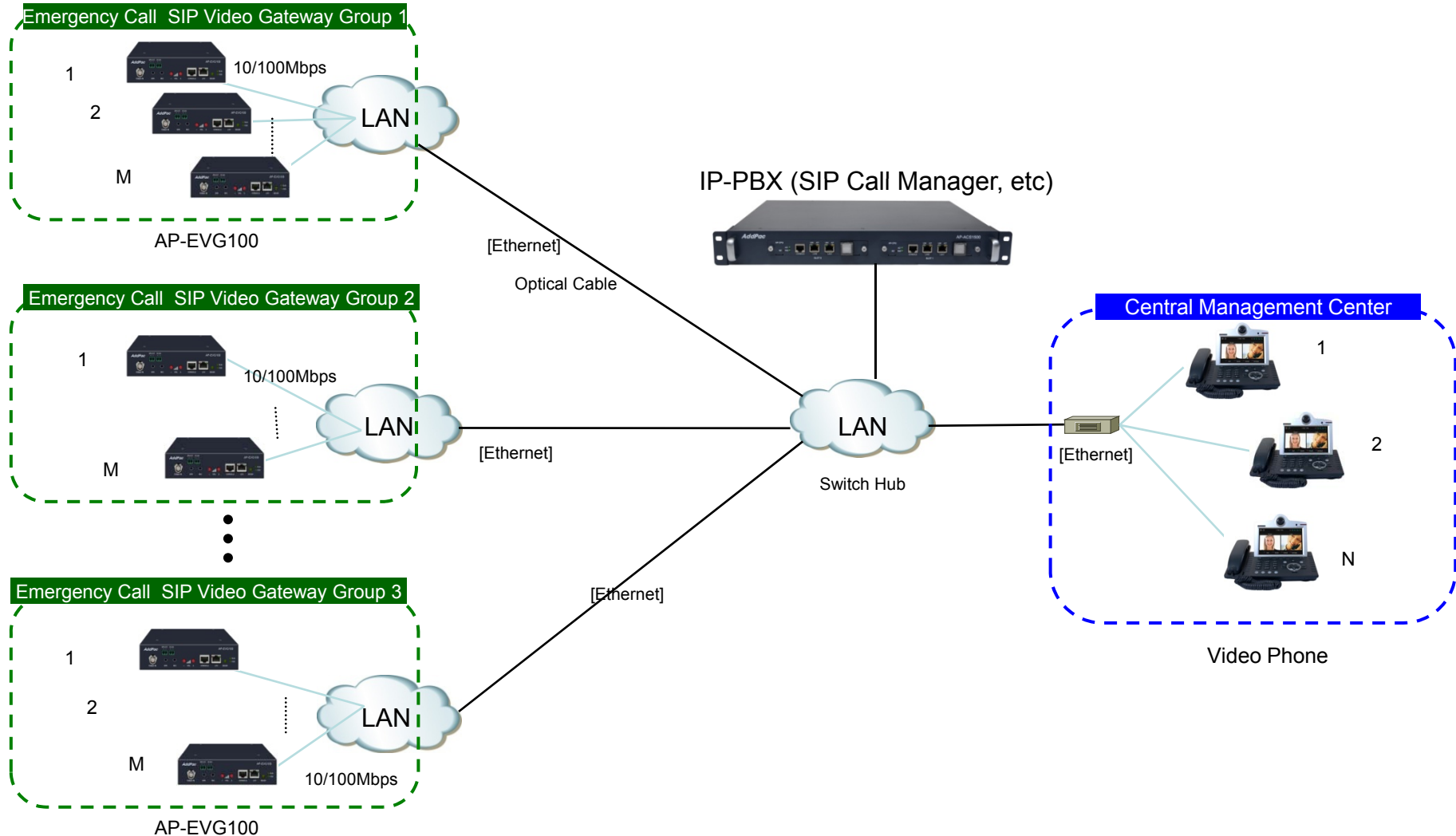
## AP-EVG100 Emergency Call SIP HD Video Gateway

- Network Managements
  - DHCP Server & Relay Functions
  - Network Address Translation (NAT) Function
  - Port Address Translation (PAT) Function
  - Transparent Bridging (IEEE Standard) Function
    - Spanning Tree Bridging Protocol Support
    - Remote Bridging Support
    - Concurrent Routing and Bridging Support
  - Cisco Style Command Line Interface (CLI)
  - Network time Protocol (NTP) Support



# Emergency Call Center Application

## AP-EVG100 Emergency Call SIP Video Gateway



# Ordering Information

- AP-EVG100 Emergency Call SIP HD Video Gateway Hardware
  - AP-EVG100 Emergency Call SIP HD Video Gateway Main Body
  - RISC Microprocessor with Embedded Video DSP Architecture
  - One(1) 10/100Mbps Fast Ethernet
  - One(1) RS-232C Interface (RJ45)
  - One(1) Video Camera Interface (BNC)
  - SPK/MIC Audio Interface Support
  - Volume Control Button Support (Up, Down)
  - External Power Supply Support
  - Option : 40Watt Digital AMP. Built-in Speaker Output
  - I/O Interface (Alarm Input 1Port, Relay Output 3 Port)
- Built-in APOS Internetworking Software for AP-EVG100
- Including 1 Year Hardware Warranty
- Product Documents
  - Install and Operation Guide (PDF)
- Pricing
  - AddPac Technology Regional Sales Manager
  - Authorized Sales and Marketing Representatives



# Thank you!

**AddPac Technology Co., Ltd.**  
Sales and Marketing

Phone +82.2.568.3848 (KOREA)

FAX +82.2.568.3847 (KOREA)

E-mail [sales@addpac.com](mailto:sales@addpac.com)