

AP-EIG100

Emergency Call SIP Gateway

High Performance Emergency Call SIP Gateway Solution

CCTV Interworking Signal Flow



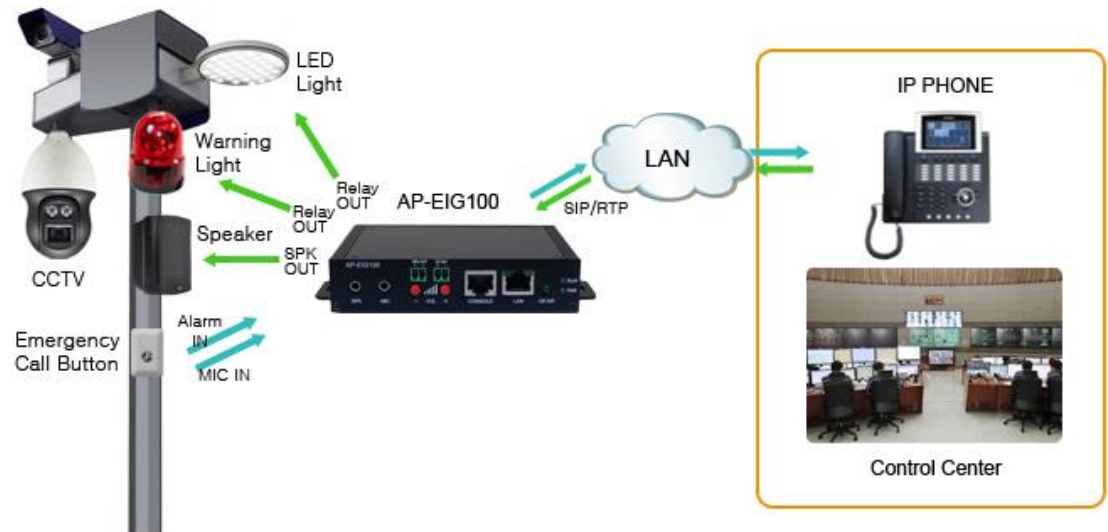
AddPac

AddPac Technology

Sales and Marketing

Contents

- Product Overview
- Hardware Specification
- Network Diagram
- Message Signal Flow



Product Overview

AP-EIG100 Emergency Call IP Gateway

- High Performance Emergency Call VoIP Gateway Solution
- Emergency Call Button, MIC Separated SIP Gateway Solution
- Full Duplex Voice Communication
- One(1) 10/100Mbps Fast Ethernet
- Internal Built-in Digital AMP. (40Watt at 8ohm) Support
- Alarm Input Ports, Relay Output Ports, Speaker Output Interface Ports for External Loud Speaker, CCTV LED Light On/Off Control, Warning Light On/Off Control
- SIP VoIP Signaling Stack Embedded
- High Quality 16KHz Wide-Band Audio Codec Support : G.722
- Various VoIP Codec : G.722, G.711, G.726, G.729A, G.723.1, etc
- Powerful Acoustic Echo Canceller Chip Embedded
- Powerful Network Protocols (PPPoE, DHCP, Static Routing, etc)
- Firmware Upgradeable Architecture
- Advanced Voice QoS Mechanism

Hardware Specification

AP-EIG100 Emergency Call IP Gateway

RISC
CPU

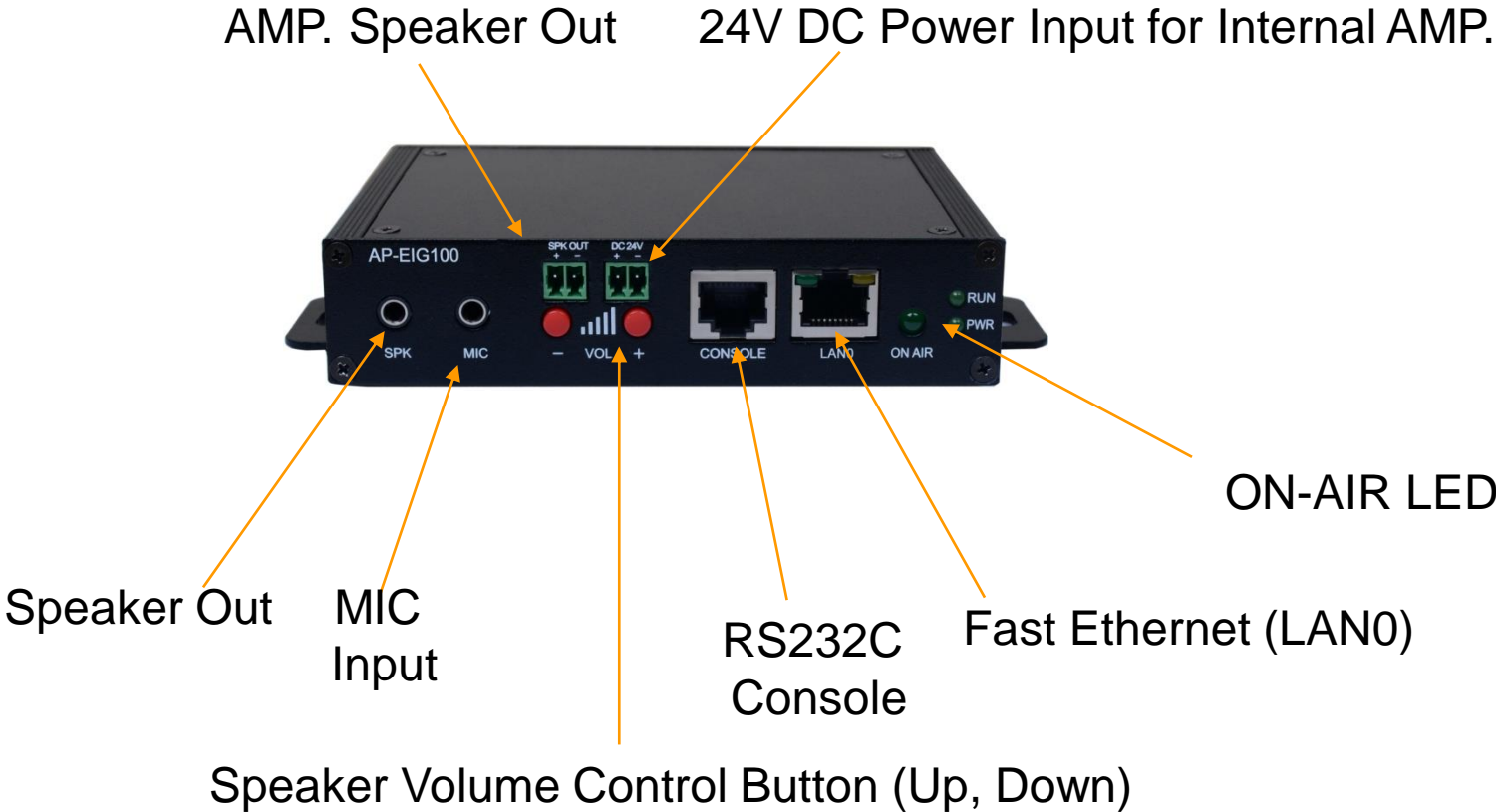
High-end
DSP

- RISC Microprocessor Computing Power
- High-end Programmable Voice DSP Hardware Architecture
- High Quality Audio Encoding/Decoding Service
- One(1) 10/100Mbps Fast Ethernet (RJ45)
- One(1) RS-232C Interface (RJ45)
- SPK/MIC Audio Interface Support
- Volume Control Button Support (Up, Down)
- External Power Supply Support
- Option : 40Watt Digital AMP. Built-in Speaker Output
- I/O Interface (Alarm Input 1Port, Relay Output 3Port)
- Button I/O Interface : Call Button Input, Call Button LED

Hardware Specification

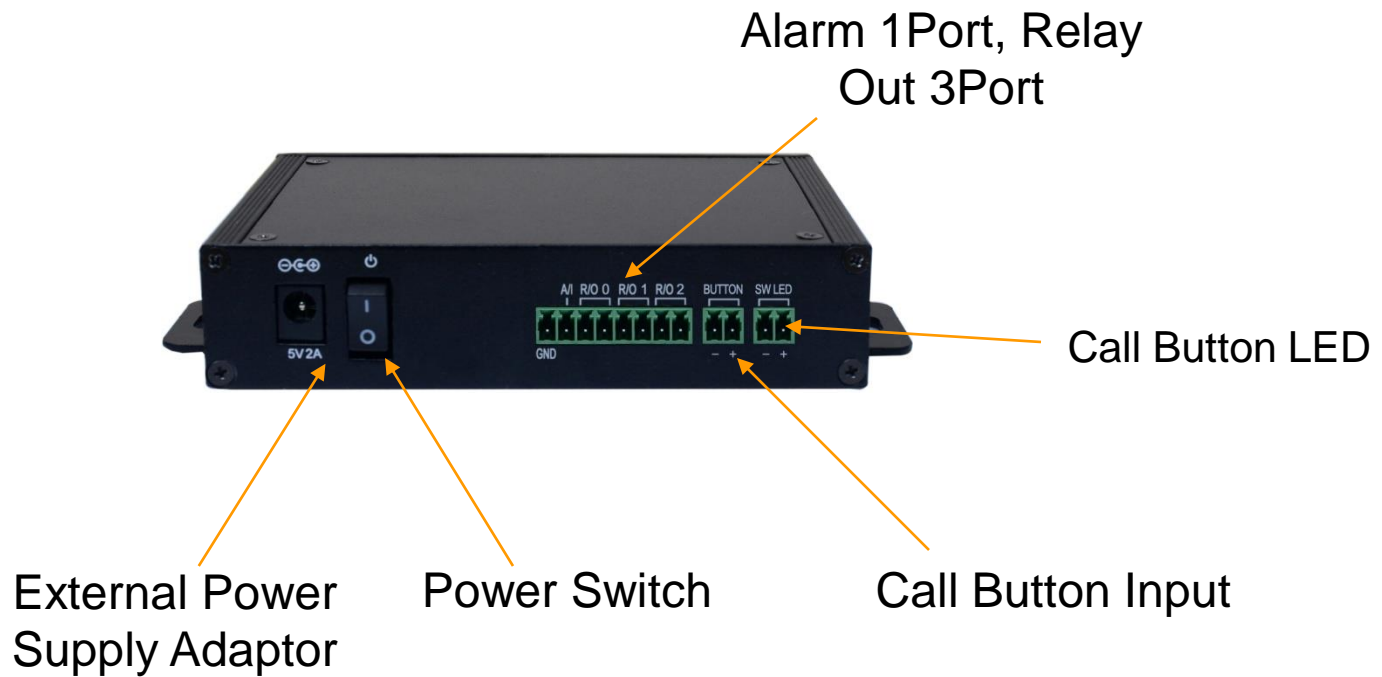
AP-EIG100 Emergency Call IP Gateway

Front Side

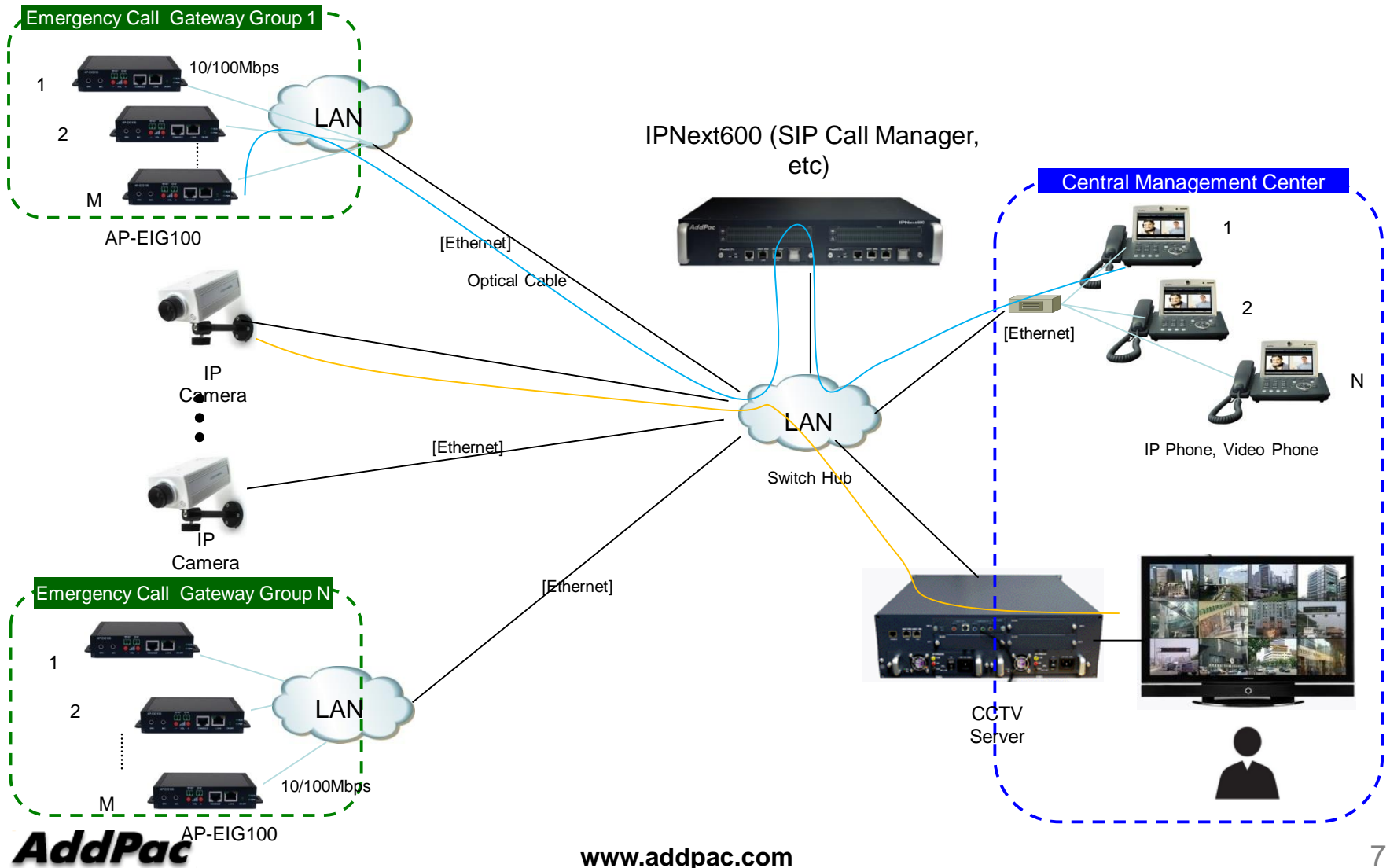


Hardware Specification

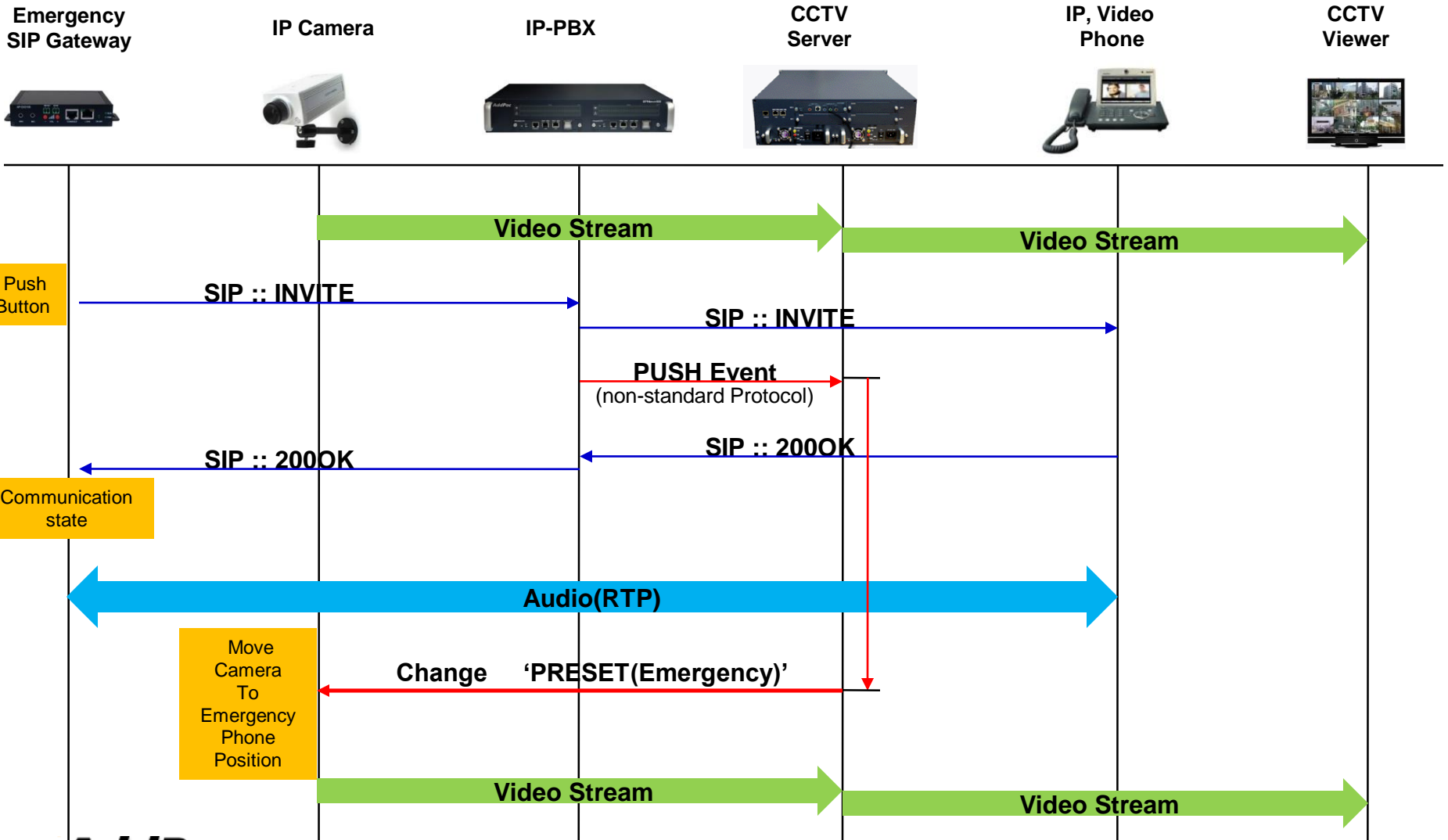
Back Side



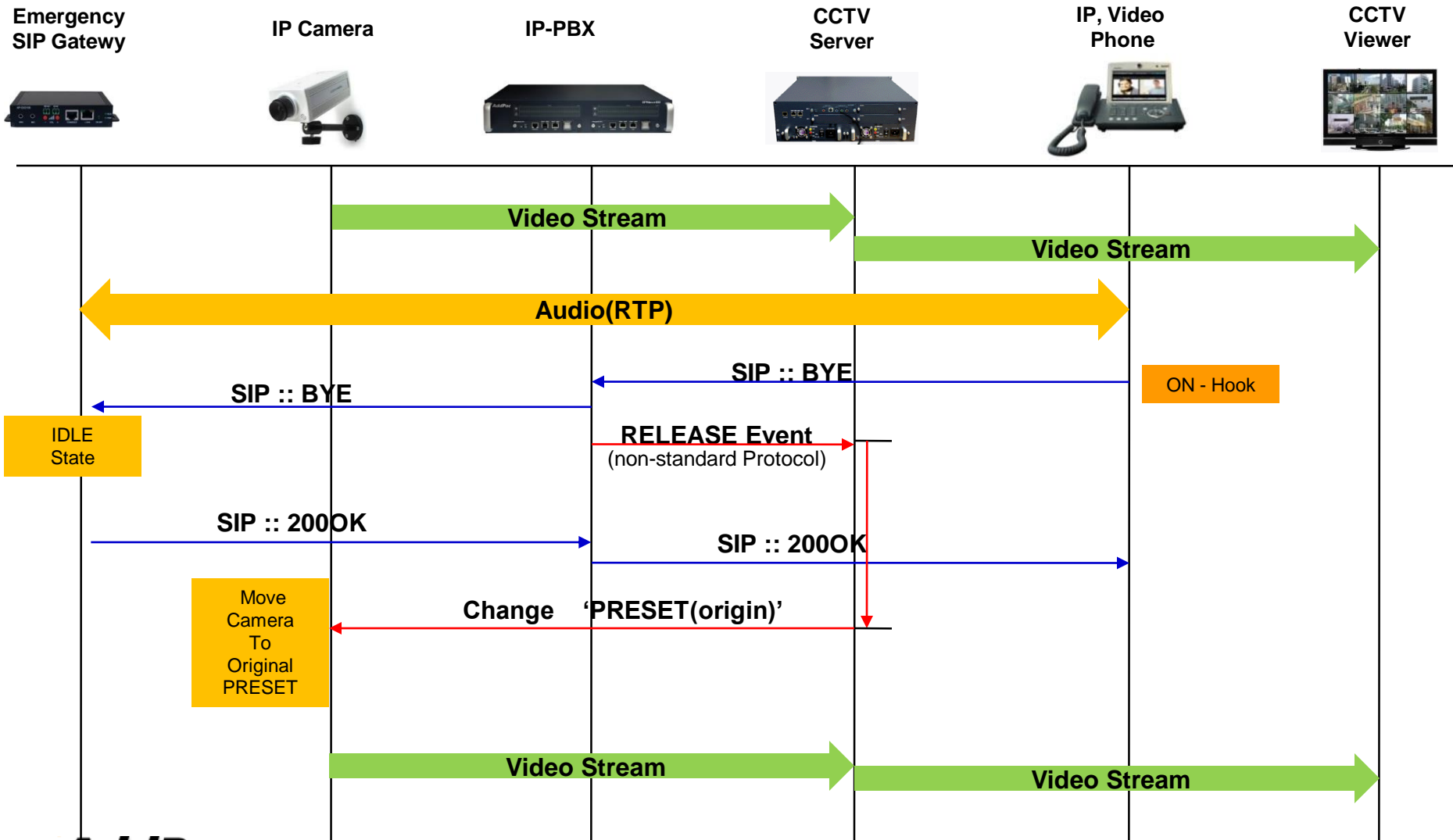
Network Diagram



Message Signal Flow (Emergency Call Start)



Message Signal Flow (Emergency Call Release)



Thank you!

AddPac Technology Co., Ltd.
Sales and Marketing

Phone +82.2.568.3848 (KOREA)

FAX +82.2.568.3847 (KOREA)

E-mail sales@addpac.com