



# AP-PCT100

## PTT Control IP Terminal

High Performance PTT (Push to Talk) Control IP Terminal Solution

### Product Overview



# **AddPac**

**AddPac Technology**

Sales and Marketing

[www.addpac.com](http://www.addpac.com)

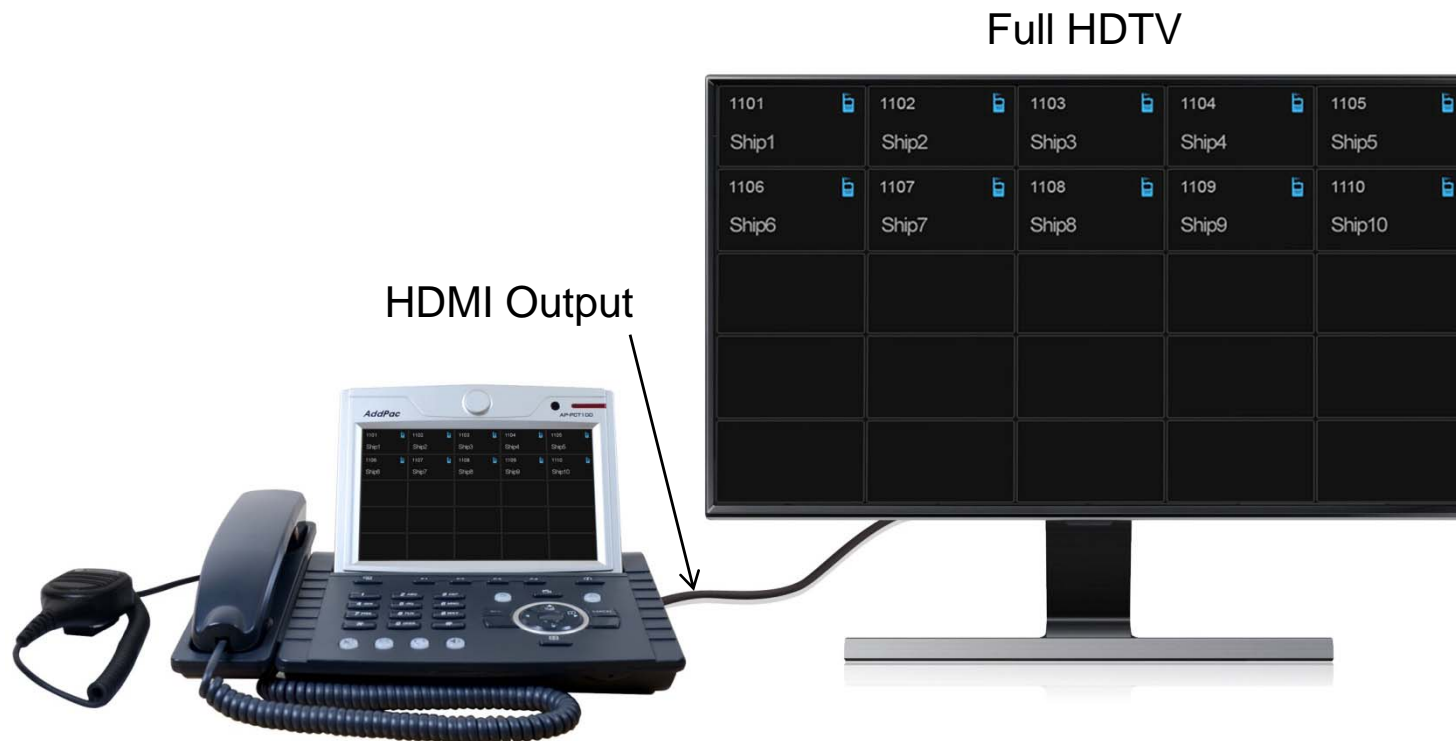
# High Quality, High Resolution

AP-PCT100 PTT Control IP Terminal



# High Quality, High Resolution

AP-PCT100 PTT Control IP Terminal



# Contents

- Product Overview
- Hardware Specification
- Software Service
- Voice PTT (Push to Talk) Service
- Audio & Voice Service and Features
- Network Service and Features
- Application Area
- Ordering Information

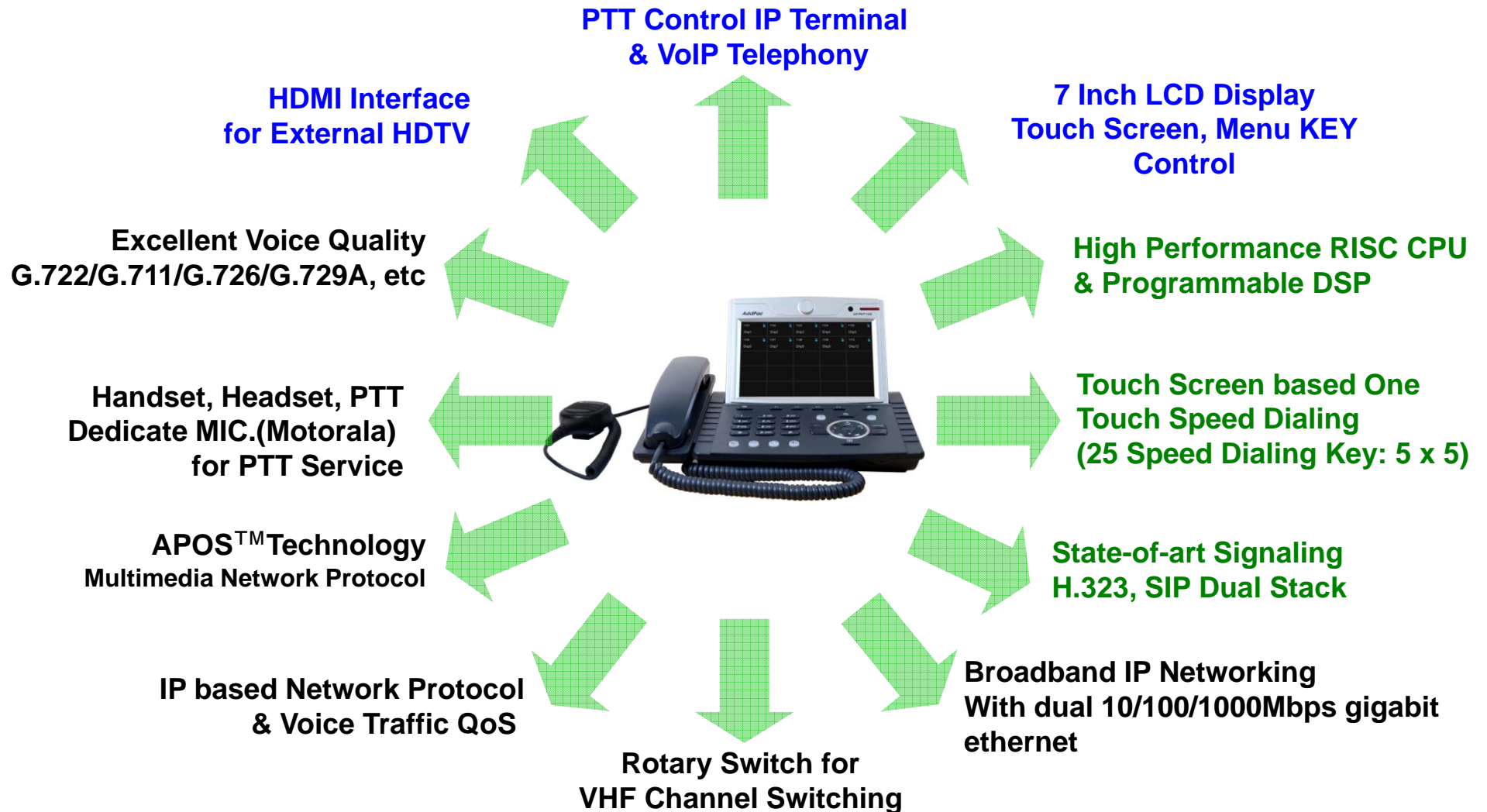
# Product Overview

## AP-PCT100 PTT Control IP Terminal

- PTT (Push to Talk) Control IP Terminal Solution
- PTT : Handset, Headset, PTT Dedicate MIC., Rotary Switch for Frequency Change
- RoIP (Radio over IP) Control Terminal Solution for Call Center
- High-Quality Audio and Voice Service
- High Performance Programmable DSP
- 7Inch Touch Screen LCD Control
- H.323 and SIP Dual VoIP Signaling Protocols
- Various VoIP Codec (G.711,G.726,G.729,etc) Support for Satellite RoIP Service
- Two(2) 10/100/1000Mbps Gigabit Ethernet
- HDMI Interface for External HDTV
- Call Status Monitoring Support
- XML Browser Support
- Firmware Upgradeable Architecture
- Video Solution with Outstanding Network Service Capability
- Audio/Video Privacy Protection

# Product Highlights

AP-PCT100 PTT Control IP Terminal



# Hardware Specification

## AP-PCT100 PTT Control IP Terminal

High-end  
**DSP**

- High-end Programmable DSP Hardware Architecture
- Video Input Interface
  - RCA Video Input
- Video Output Interface
  - RCA Video Output, HDMI Video Output
- High quality Audio and Voice Interface
  - Stereo Audio Input & Output Connector
- Network Interface
  - Two(2) 10/100/1000Mbps Gigabit Ethernet
  - One(1) RS-232C Console
  - One(1) USB Interface
- Power Supply
  - External Power Adaptor
  - PoE (Power over Ethernet) : Option
- PTT Mic. Interface : Ex. Motorola PTT MIC.
- Rotary Switch for VHF Frequency Switching

# Hardware Specification

AP-PCT100 PTT Control IP Terminal

High-end  
DSP

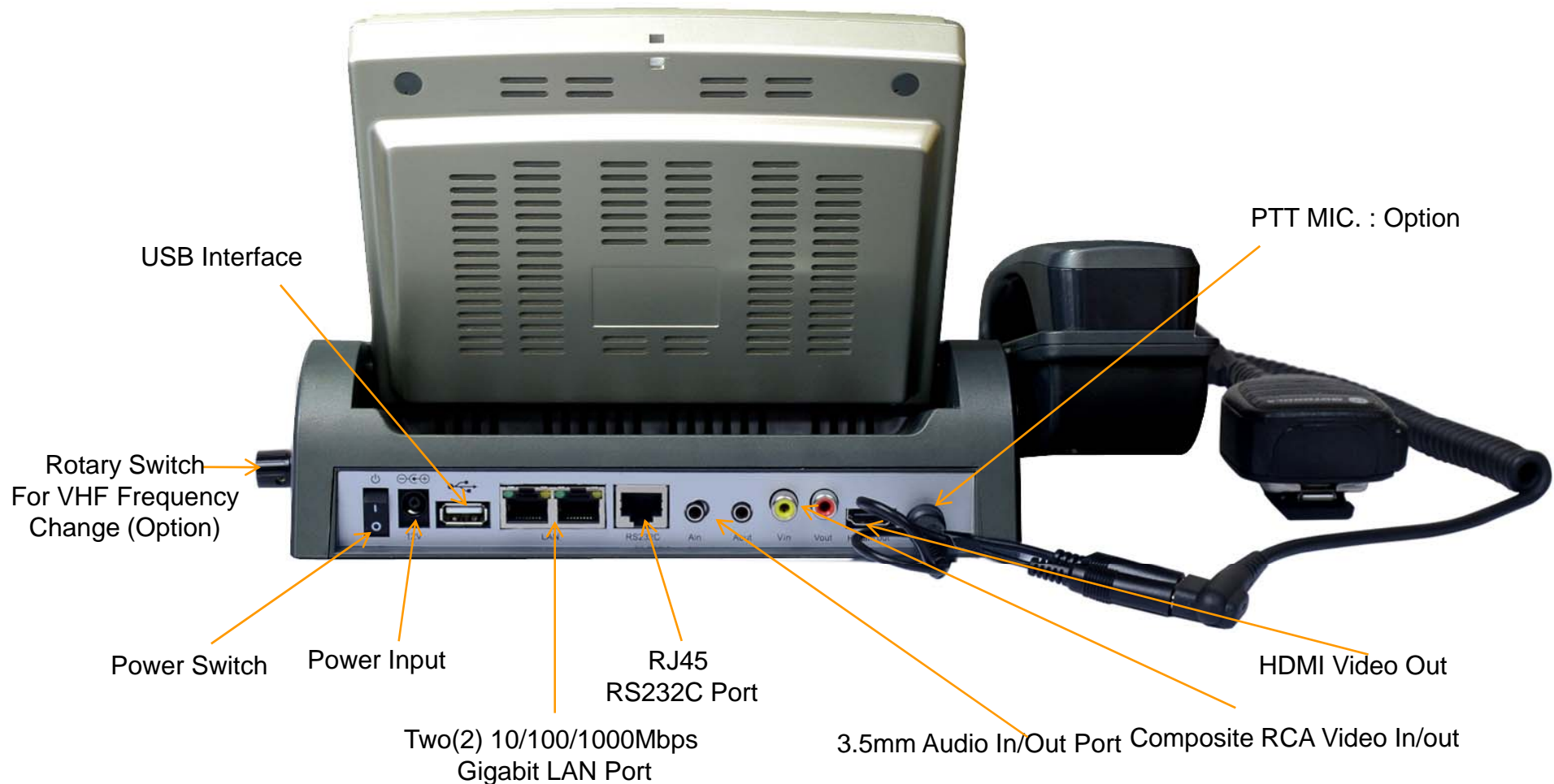




# Hardware Specification

AP-PCT100 PTT Control IP Terminal

High-end  
DSP



# Hardware Specification

AP-PCT100 PTT Control IP Terminal

High-end  
**DSP**

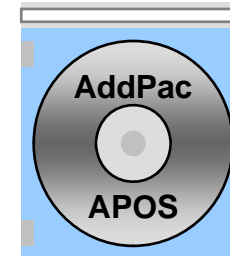


Rotary Switch  
For VHF Frequency  
Change (Option)

# Software Service

AP-PCT100 PTT Control IP Terminal

- **Built-in AddPac APOS Internetworking Software**
  - Scalability, Functionality, and Stability Features
  - Voice Traffic QoS Control
- **Programmable Audio, and Voice Services**
  - Audio, and Voice Codec
- **Firmware Upgradeable DSP Architecture**
- **OSD (On-screen Display) Function Support**
- **Industry Standard IP based Network Protocol Features**
- **RoIP (Radio over IP) PTT Service Features**





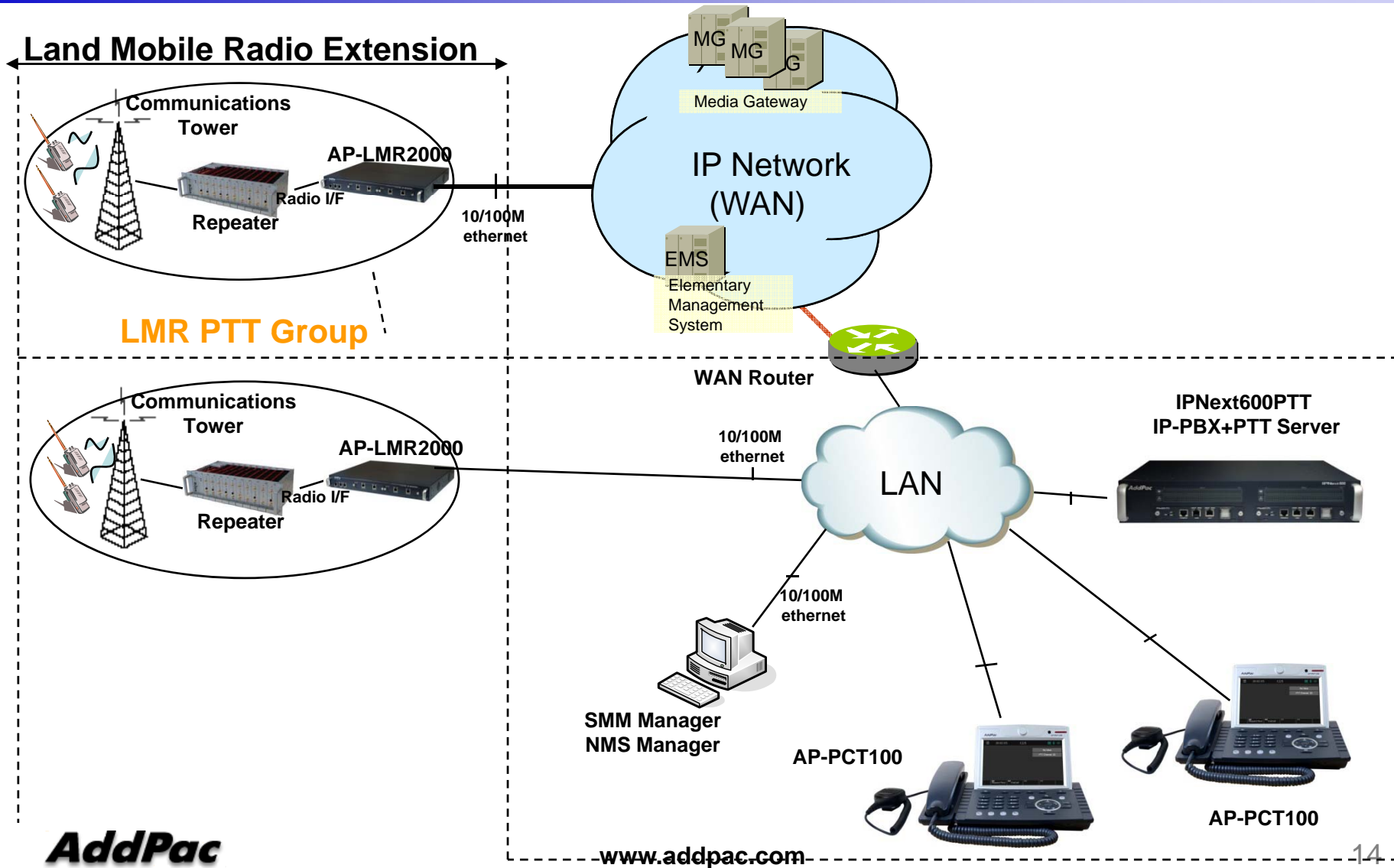
# Voice PTT (Push-to-Talk) Service Features

# Contents

- PTT Service Network Diagram
- AddPac PTT Service Features
- AP-VP300 Voice PTT Service UI
  - PTT Idle Mode
  - PTT Call Mode
  - PTT Call Mode (Dialing)
  - PTT Waiting Mode
  - PTT Mode
  - PTT Close Mode



# PTT Service Network Diagram



# AddPac PTT Service Features

- **Various VoIP & PTT Call Mode Support**
  - VoIP Call & PTT Call Support
  - Call Waiting Support and Incoming Call Indication
  - VoIP Call and PTT Call Mode Change
  - Various PTT Call Mode Support
    - Point-to-Point PTT Call, Group PTT Call, Emergency PTT Call
  - PTT Call Connection using Send/PTT Button
- **Status Display & Indication Function**
  - Various Call Status Display using ICON
    - Call, SMS, Wi-Fi Antenna, PTT Call Status
  - Status Indication using LED
    - Absent Call, Emergency Call
  - Status Indication using Sound
    - PTT Call Start/Incoming Call, Wi-Fi connection and release

# AddPac PTT Service Features

- PTT Group List Display Function
  - PTT Member List Display
    - Overall, Personal, Group, Emergency List Display
  - Group Presence Status Display
  - PTT Group Presence Status Display (Option : Presence Server Required)
    - Automatic Presence Status Display
    - Manual Presence Status Display
- VoIP Call List Display
  - Outbound/Incoming/Absent Call List
  - VoIP Call Phone Book
  - VoIP Call List Delete and Redialing Support





# AP-PCT100 PTT(Push-to-Talk) Service UI

# PTT Idle Mode

1101	1102	1103	1104	1105
Ship1	Ship2	Ship3	Ship4	Ship5
1106	1107	1108	1109	1110
Ship6	Ship7	Ship8	Ship9	Ship10



PTT Call Mode by  
Speed Dial Press

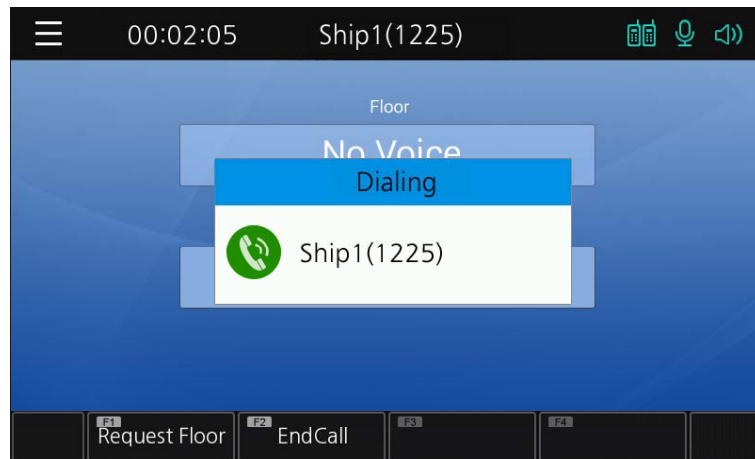
# PTT Call Mode

1101	1102	1103	1104	1105
Ship1	Ship2	Ship3	Ship4	Ship5
1106	1107	1108	1109	1110
Ship6	Ship7	Ship8	Ship9	Ship10

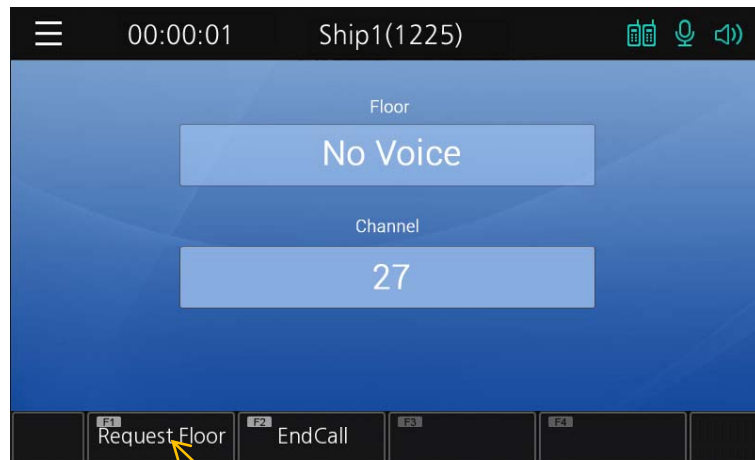


# PTT Call Mode (Dialing)

PTT Dialing Number : Ship1(1225)

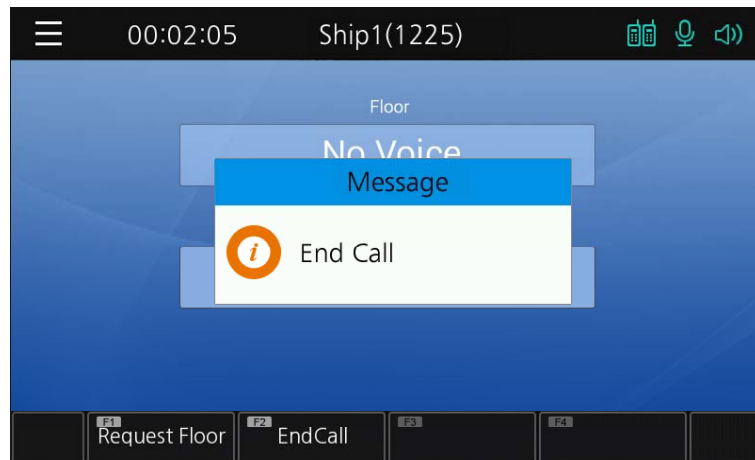


# Push-to-Talk Mode



Push-to-Talk (F1 Softkey  
Press)

# PTT Close Mode



PTT Close (F2 Softkey Press  
& OK)

# Audio & Voice Service and Features

AP-PCT100 PTT Control IP Terminal

- **Audio & Voice Networking Interface**
  - Audio Input/Output Port (2 x 3.5mm Stereo Female Connector)
- **VoIP based Signaling Protocol Support**
  - H.323, SIP Multiple Signaling Protocol Stack
  - H.323 Gateway, Gatekeeper Support
- **High-performance Audio & Voice Codec Support**
  - Line IN/OUT : G.711, G.726, G.729A, G.723.1 Audio Codec, etc
- **Enhanced QoS Management Features for Voice Traffics**

# Network Service and Features

AP-PCT100 PTT Control IP Terminal

- **Basic Network Protocols**
  - ARP, IP, IPv6, TCP, UDP, ICMP, ICMPv6, SCTP, IGMP, MLD
- **Routing Protocol**
  - IPv4 : Static
  - IPv6 : Static
- **Service Protocol**
  - FTP, Telnet, TFTP, DHCP Server/Relay, SNMP Server
  - CDP (Cisco Discovery Protocol)
  - DNS Resolver , DDNS(nsupdate)
  - Bridge
  - Syslog
  - IP/IPv6 policy control (QoS)
  - VPDN (Virtual Private Dial-up Network : L2TP Server)



# Network Service and Features

AP-PCT100 PTT Control IP Terminal

- **IPv4/IPv6 Interworking**
  - NAT/PAT for IPv4
  - IP connect (formerly ip-share) and device cascade for IPv4
  - IP/IP, IP/GRE tunneling
  - NAT-PT
  - 6to4, Autoconfig tunneling
- **IPv4 Address Configuration**
  - Fixed (Static)
  - DHCP
  - PPPoE
- **IPv6 Address Configuration**
  - Fixed (Static)
  - EUI-64
  - Autoconfig (Neighbor Advertisement and Solicitation)

# Network Service and Features

AP-PCT100 PTT Control IP Terminal

- **Miscellaneous**
  - Cisco Style CLI
  - Standard & Extended IPv4/IPv6 Access List
  - Multi-level User Account Management
  - IP accounting
  - fsh (Embedded file system shell)
  - STUN Client

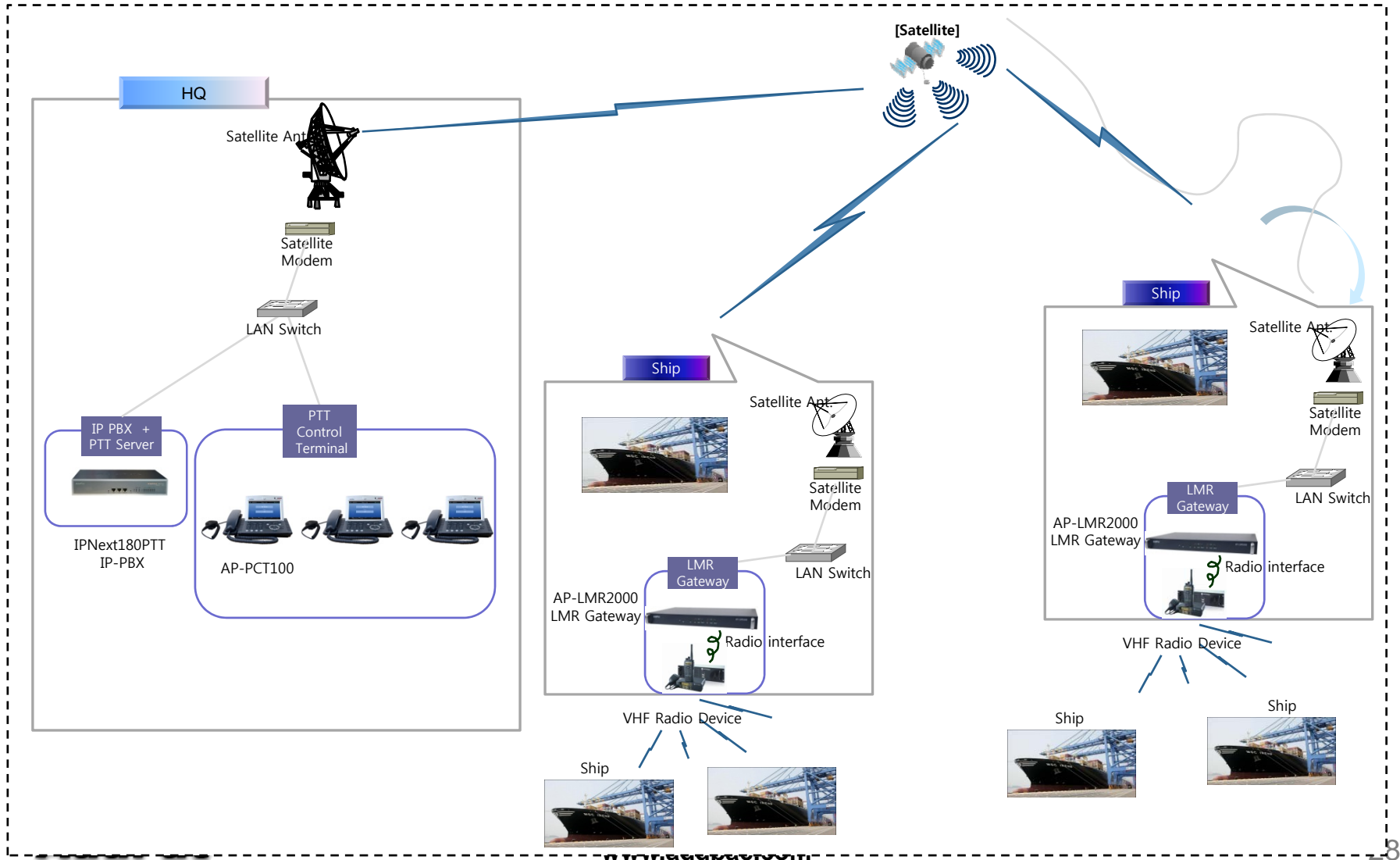
# Network Service and Features

AP-PCT100 PTT Control IP Terminal

- **SNMP MIBs**
  - MIB-II
  - RMON MIBs (Statistics, History, Alarm, Hosts Group)
  - RFC2465 Management Information Base for IP Version 6: Textual Conventions and General Group
  - RFC2466 Management Information Base for IP Version 6: ICMPv6 Group
  - RFC2452 IP Version 6 Management Information Base for the Transmission Control Protocol
  - RFC2454 IP Version 6 Management Information Base for the User Datagram Protocol
  - AddPac Enterprise MIBs
  - etc

# AP-PCT100 PTT Control IP Terminal

## Satellite RoIP Service Application



# Ordering Information

- **AP-PCT100 PTT Control IP Terminal Hardware**
  - RISC Microprocessor with High-end Programmable DSP Architecture
  - 7 Inch LCD, Touch Screen
  - External Video RCA Input/Output, HDMI Video Output
  - 3.5mm Audio Input/Output
  - 2-ports 10/100/1000Mbps Gigabit Ethernet and 1-port RS-232C Console
  - Rotary Switch for VHF Frequency Channel Switch.
  - 1-Port PTT MIC Interface for Motorola PTT MIC. etc.
  - Option : PoE Interface
  - Option : USB Interface
  - Including Network Cable Set & Ext. Power Supply, etc.
- **Built-in APOS Internetworking Software for AP-PCT100**
- **Including 1 Year Hardware Warranty**
- **Product Documents**
  - Install and Operation Guide (PDF)
- **Pricing**
  - AddPac Technology Regional Sales Manager
  - Authorized Sales and Marketing Representatives



# Thank you!

**AddPac Technology Co., Ltd.**  
Sales and Marketing

Phone +82.2.568.3848 (KOREA)

FAX +82.2.568.3847 (KOREA)

E-mail [sales@addpac.com](mailto:sales@addpac.com)