



AP-VP300GPTT PTT Control IP Video Terminal

High Performance PTT (Push to Talk) Control IP Video Terminal Solution

Product Overview



AddPac

AddPac Technology

Sales and Marketing

www.addpac.com

High Quality, High Resolution

AP-VP300GPTT PTT Control IP Video Terminal



High Quality, High Resolution

AP-VP300GPTT PTT Control IP Video Terminal

Full HDTV



Contents

- Product Overview
- Benefits and Features
- Hardware Specification
- Software Service
- Voice PTT (Push to Talk) Service
- Video Service & Features
- Audio & Voice Service and Features
- Network Service and Features
- Application Area
- Ordering Information

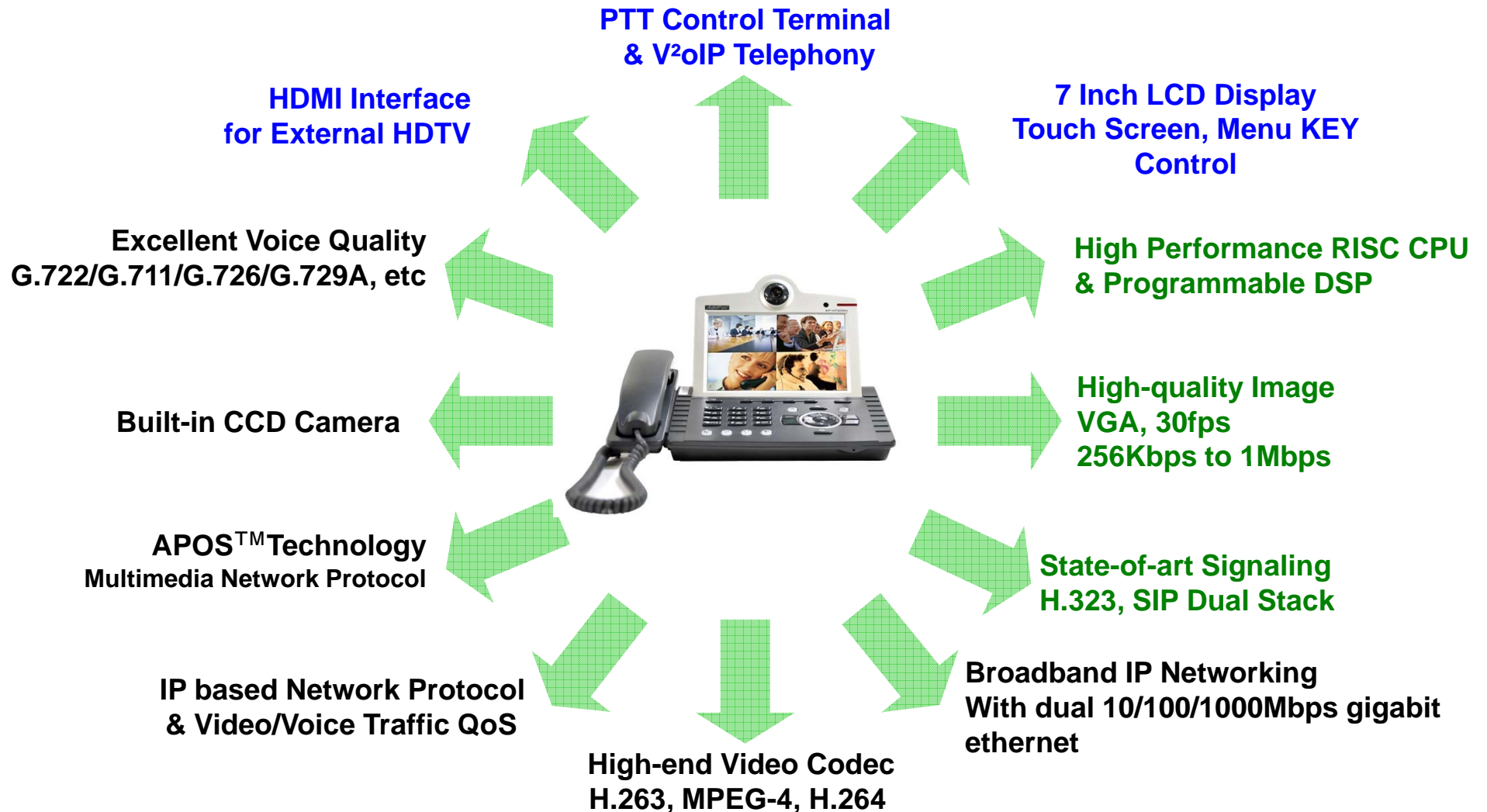
Product Overview

AP-VP300GPTT PTT Control IP Video Terminal

- PTT (Push to Talk) Control IP Video Terminal Solution
- PTT : Handset, Headset, PTT Dedicate MIC., Rotary Switch for Frequency Change
- RoIP (Radio over IP) Control Terminal Solution for Call Center
- High-Quality Video, Audio, and Voice Service
- High Performance Programmable Video DSP
- Video Telephony and Videoconferencing Service Features
- Built-In CCD Camera, 7Inch Touch Screen LCD Control
- H.323 and SIP Dual VoIP Signaling Protocols
- H.264/H.263/MPEG4 Video Codec Support
- Two(2) 10/100/1000Mbps Gigabit Ethernet
- HDMI Interface for External HDTV
- Call Status Monitoring Support
- XML Browser Support
- Firmware Upgradeable Architecture
- Video Solution with Outstanding Network Service Capability
- Audio/Video Privacy Protection

Product Highlights

AP-VP300GPTT PTT Control IP Video Terminal



Benefits and Features

AP-VP300GPTT PTT Control IP Video Terminal

- **7 Inch LCD Display, Built-in CCD Camera**
- **External Video Interface**
 - HDMI Video Out, Composite (RCA) Video In/Out, Audio (RCA) In/Out
- **High-performance Video Codec Support**
 - H.263, MPEG-4, and H.264
- **Powerful Image Resolution Support**
 - QCIF(176x144), CIF(352x288), QVGA(320x240), VGA(640x480)
- **Up to 30fps with VGA-Resolution for Internal LCD, Built-In Camera**
- **HDMI Output Interface for External HD TV**
- **Video Conference Call Support (AddPac External MCU Inter-working)**
- **SIP, H.323 Signaling Support**
- **Rate Control for Video Traffic QoS**
 - Ensuring Optimized Quality
 - Frame Rate with Limited Bandwidth
- **High-end Error Resilient Against Various Packet Error**

Hardware Specification

AP-VP300GPTT PTT Control IP Video Terminal

High-end
DSP

- High-end Programmable DSP Hardware Architecture
- Video Input Interface
 - RCA Video Input
- Video Output Interface
 - RCA Video Output, HDMI Video Output
- High quality Audio and Voice Interface
 - Stereo Audio Input & Output Connector
- Network Interface
 - Two(2) 10/100/1000Mbps Gigabit Ethernet
 - One(1) RS-232C Console
 - One(1) USB Interface
- Power Supply
 - External Power Adaptor
 - PoE (Power over Ethernet) : Option
- PTT Mic. Interface : Ex. Motorola PTT MIC.
- Rotary Switch for VHF Frequency Switching

Hardware Specification

AP-VP300GPTT PTT Control IP Video Terminal

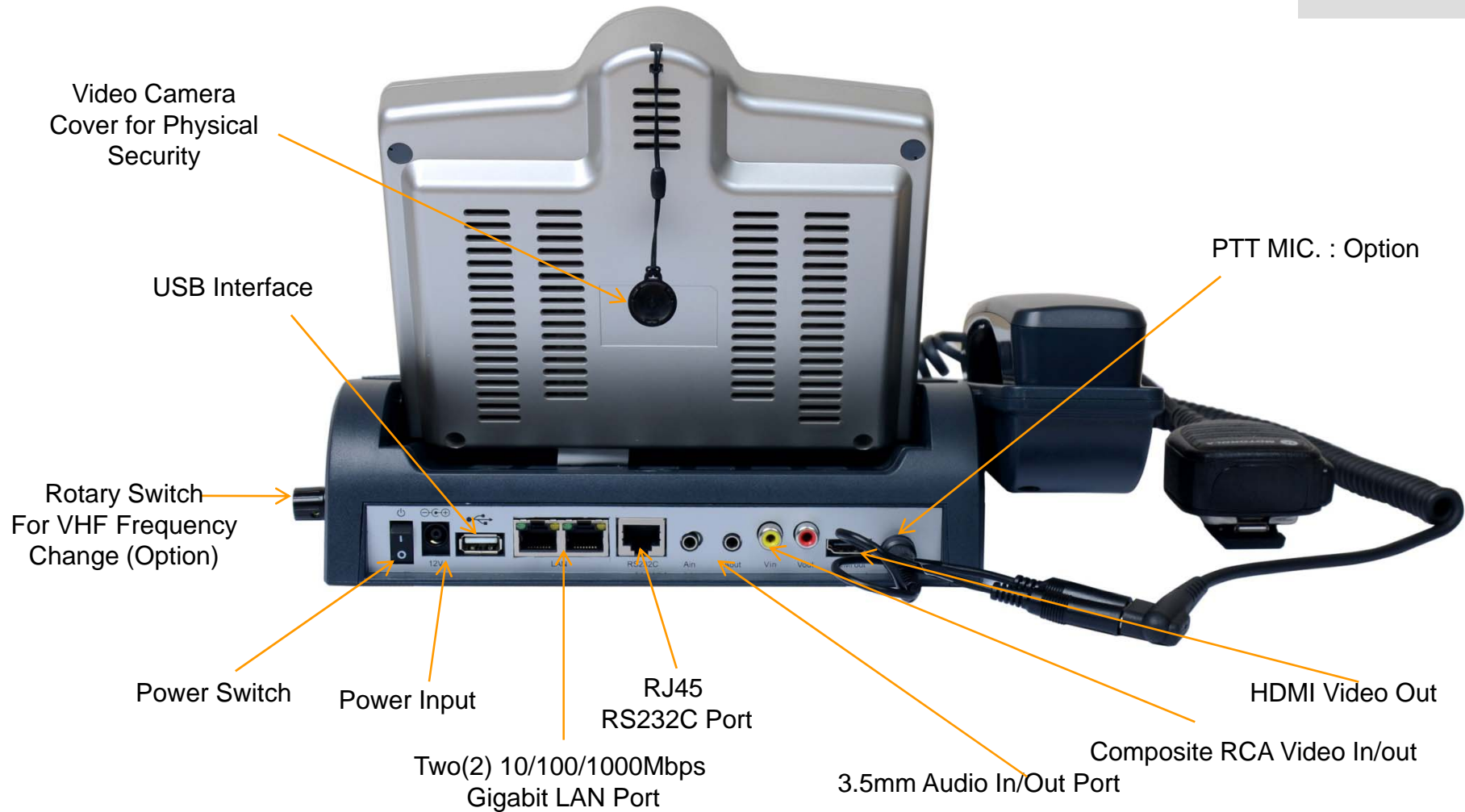
High-end
DSP



Hardware Specification

AP-VP300GPTT PTT Control IP Video Terminal

High-end
DSP



Hardware Specification

AP-VP300GPTT PTT Control IP Video Terminal

High-end
DSP

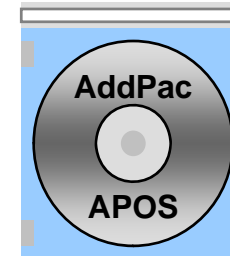


Rotary Switch
For VHF Frequency
Change (Option)

Software Service

AP-VP300GPTT PTT Control IP Video Terminal

- **Built-in AddPac APOS Internetworking Software**
 - Scalability, Functionality, and Stability Features
 - Video Traffic QoS Control
- **Programmable Video, Audio, and Voice Services**
 - Video Codes, Audio, and Voice Codec
- **Firmware Upgradeable DSP Architecture**
- **OSD (On-screen Display) Function Support**
- **Industry Standard IP based Network Protocol Features**
- **RoIP (Radio over IP) PTT Service Features**





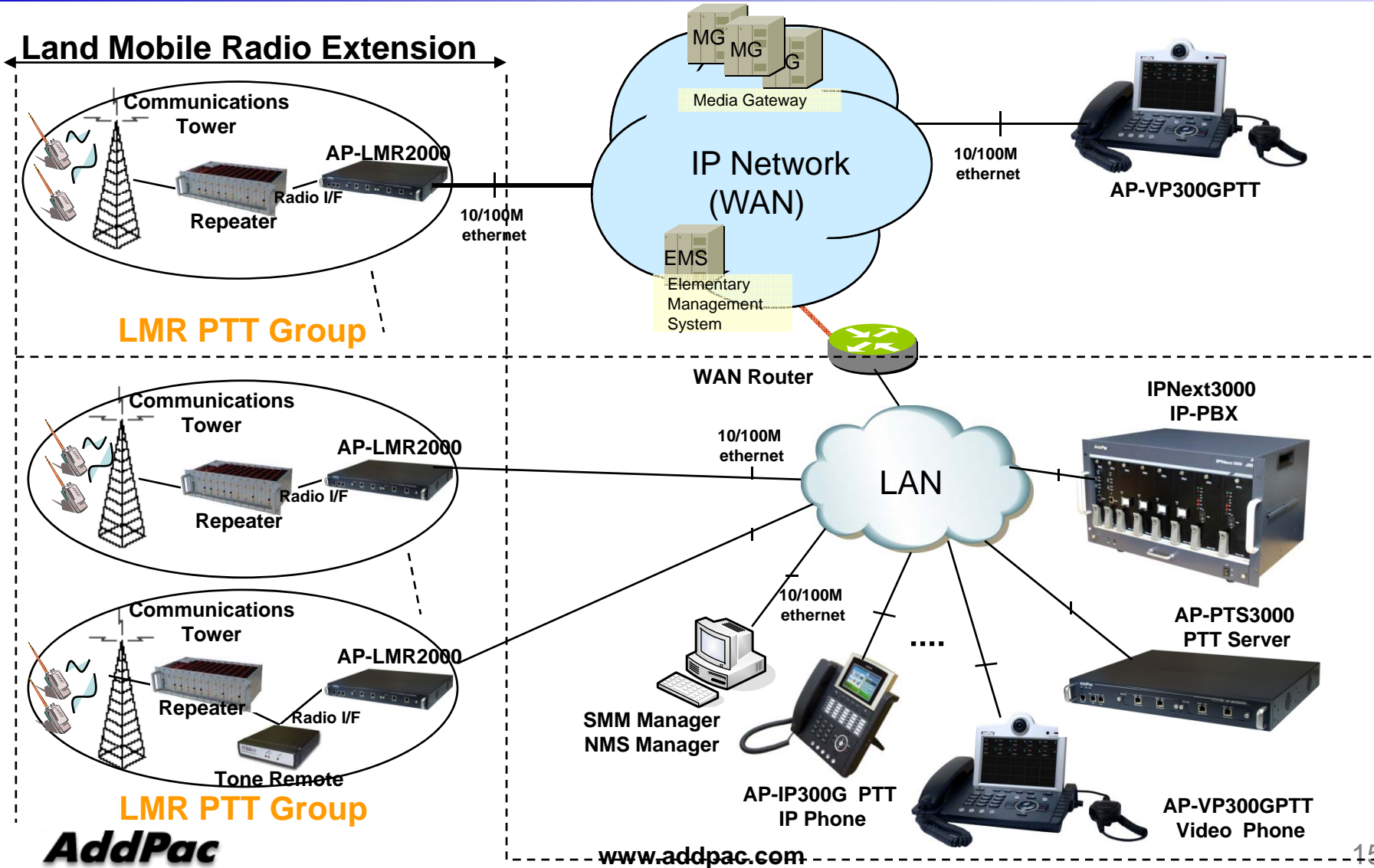
Voice PTT (Push-to-Talk) Service Features

Contents

- PTT Service Network Diagram
- AddPac PTT Service Features
- AP-VP300 Voice PTT Service UI
 - PTT Idle Mode
 - PTT Call Mode
 - PTT Call Mode (Dialing)
 - PTT Waiting Mode
 - PTT Mode
 - PTT Close Mode



PTT Service Network Diagram



AddPac PTT Service Features

- **Various VoIP & PTT Call Mode Support**
 - VoIP Call & PTT Call Support
 - Call Waiting Support and Incoming Call Indication
 - VoIP Call and PTT Call Mode Change
 - Various PTT Call Mode Support
 - Point-to-Point PTT Call, Group PTT Call, Emergency PTT Call
 - PTT Call Connection using Send/PTT Button
- **Status Display & Indication Function**
 - Various Call Status Display using ICON
 - Call, SMS, Wi-Fi Antenna, PTT Call Status
 - Status Indication using LED
 - Absent Call, Emergency Call
 - Status Indication using Sound
 - PTT Call Start/Incoming Call, Wi-Fi connection and release

AddPac PTT Service Features

- PTT Group List Display Function
 - PTT Member List Display
 - Overall, Personal, Group, Emergency List Display
 - Group Presence Status Display
 - PTT Group Presence Status Display (Option : Presence Server Required)
 - Automatic Presence Status Display
 - Manual Presence Status Display
- VoIP Call List Display
 - Outbound/Incoming/Absent Call List
 - VoIP Call Phone Book
 - VoIP Call List Delete and Redialing Support



AP-VP300 PTT(Push-to-Talk) Service UI

PTT Idle Mode

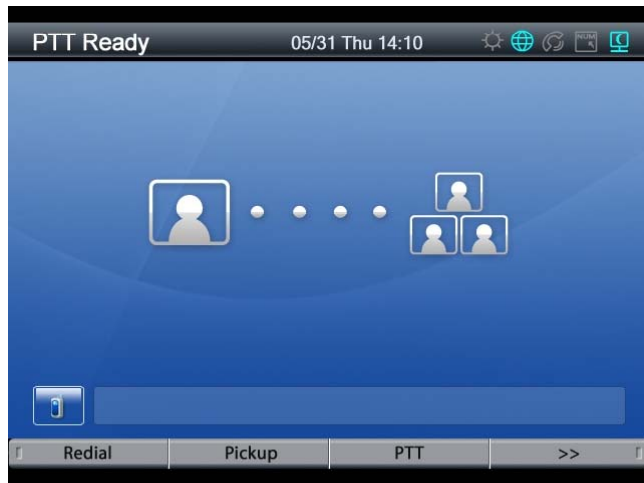


PTT Call Mode Entering by
F3 Softkey Press

AddPac

www.addpac.com

PTT Call Mode



PTT Call Mode (Dialing)

PTT Dialing Number : 1002



PTT Waiting Mode

PTT Waiting Mode after PTT Dialing

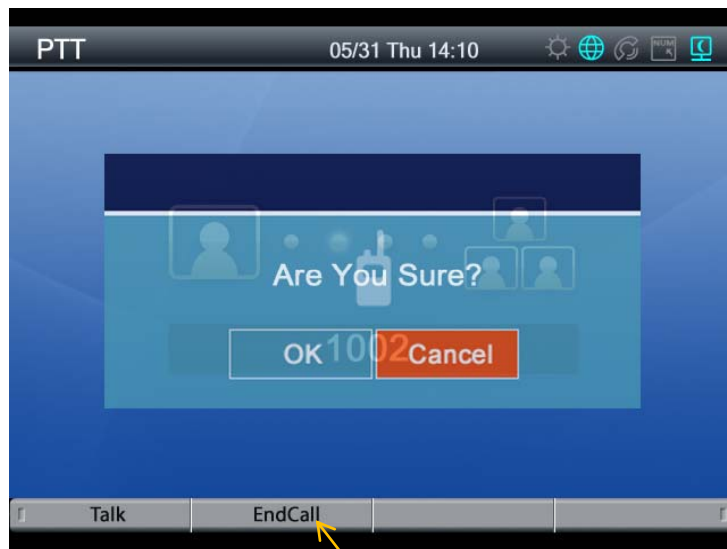


Push-to-Talk Mode



Push-to-Talk (F1 Softkey
Press)

PTT Close Mode



PTT Close (F2 Softkey Press
& OK)

Video Service and Features

AP-VP300GPTT PTT Control IP Video Terminal

- **Various Video Networking Interface**
 - Composite (RCA) for Analog, HDMI for HD Video Display
- **High-performance Video Codec Support**
 - H.263, MPEG-4, and H.264
- **Powerful Image Resolution Support**
 - QCIF(176x144), CIF(352x288), QVGA(320x240),VGA(640x480)
- **Up to 30fps with VGA Resolution for Internal LCD, CCD Camera**
- **HDMI Output Interface for External HDTV**
- **256Kbps to 1Mbps Operating Video Traffic Bandwidth**
- **Rate Control for Video Traffic QoS**
 - Ensuring Optimized Quality
 - Frame Rate with Limited Bandwidth
- **High-end Error Resilient Against Various Packet Error**

Audio & Voice Service and Features

AP-VP300GPTT PTT Control IP Video Terminal

- **Audio & Voice Networking Interface**
 - Audio Input/Output Port (2 x 3.5mm Stereo Female Connector)
- **VoIP based Signaling Protocol Support**
 - H.323, SIP Multiple Signaling Protocol Stack
 - H.323 Gateway, Gatekeeper Support
- **High-performance Audio & Voice Codec Support**
 - Line IN/OUT : G.726, G.711 Audio Codec, etc
- **Enhanced QoS Management Features for Voice Traffics**

Network Service and Features

AP-VP300GPTT PTT Control IP Video Terminal

- **Basic Network Protocols**
 - ARP, IP, IPv6, TCP, UDP, ICMP, ICMPv6, SCTP, IGMP, MLD
- **Routing Protocol**
 - IPv4 : Static
 - IPv6 : Static
- **Service Protocol**
 - FTP, Telnet, TFTP, DHCP Server/Relay, SNMP Server
 - CDP (Cisco Discovery Protocol)
 - DNS Resolver , DDNS(nsupdate)
 - Bridge
 - Syslog
 - IP/IPv6 policy control (QoS)
 - VPDN (Virtual Private Dial-up Network : L2TP Server)

Network Service and Features

AP-VP300GPTT PTT Control IP Video Terminal

- **IPv4/IPv6 Interworking**
 - NAT/PAT for IPv4
 - IP connect (formerly ip-share) and device cascade for IPv4
 - IP/IP, IP/GRE tunneling
 - NAT-PT
 - 6to4, Autoconfig tunneling
- **IPv4 Address Configuration**
 - Fixed (Static)
 - DHCP
 - PPPoE
- **IPv6 Address Configuration**
 - Fixed (Static)
 - EUI-64
 - Autoconfig (Neighbor Advertisement and Solicitation)

Network Service and Features

AP-VP300GPTT PTT Control IP Video Terminal

- **Miscellaneous**

- Cisco Style CLI
- Standard & Extended IPv4/IPv6 Access List
- Multi-level User Account Management
- IP accounting
- fsh (Embedded file system shell)
- STUN Client

Network Service and Features

AP-VP300GPTT PTT Control IP Video Terminal

- **SNMP MIBs**

- MIB-II
- RMON MIBs (Statistics, History, Alarm, Hosts Group)
- RFC2465 Management Information Base for IP Version 6: Textual Conventions and General Group
- RFC2466 Management Information Base for IP Version 6: ICMPv6 Group
- RFC2452 IP Version 6 Management Information Base for the Transmission Control Protocol
- RFC2454 IP Version 6 Management Information Base for the User Datagram Protocol
- AddPac Enterprise MIBs
- etc

AP-V300GPTT PTT Control IP Video Terminal

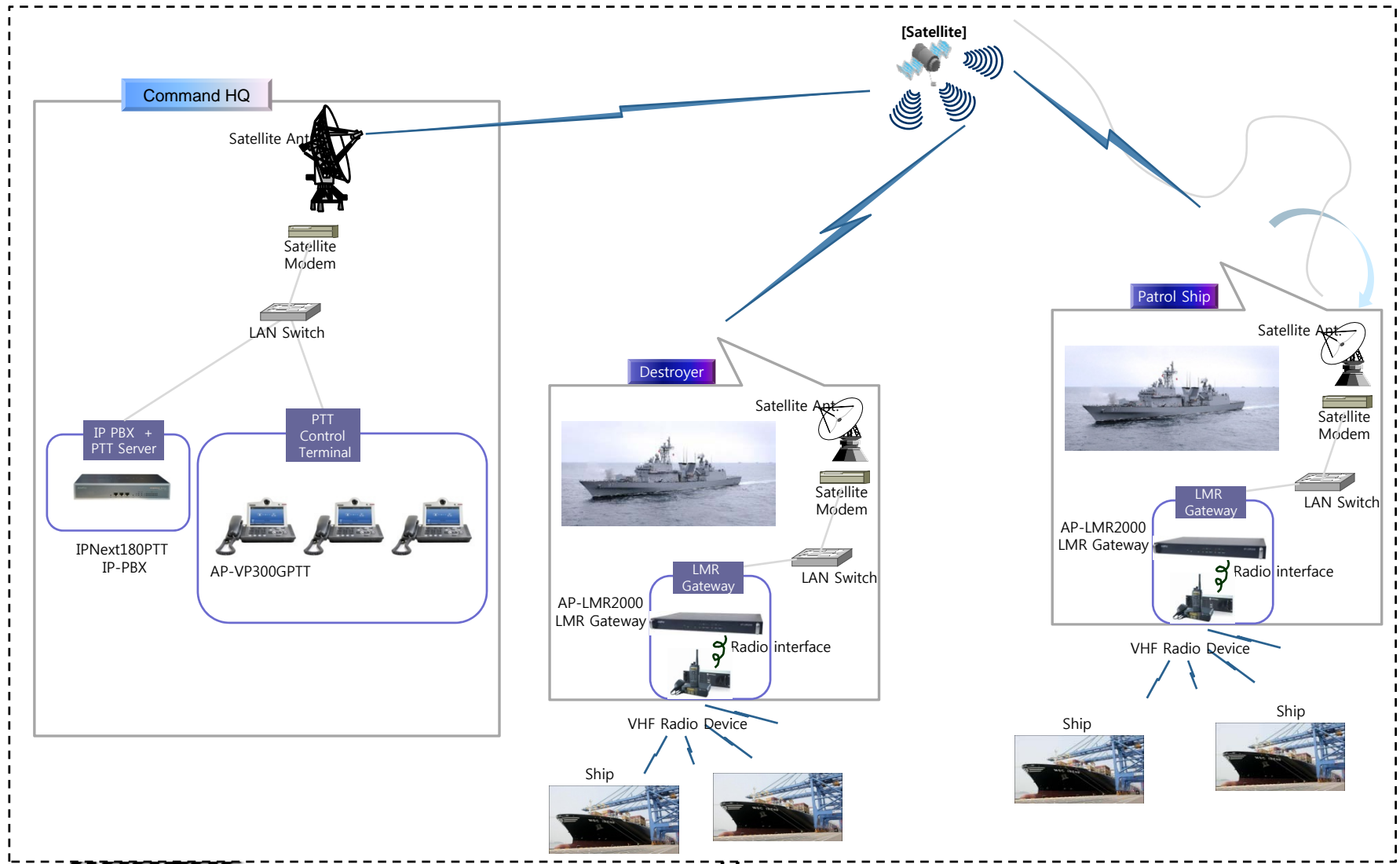
Application Area

- Satellite RoIP Application
- IP-PBX Video Terminal (SIP, H.323, etc)
- Audio/Video Real-time Broadcasting
- Video Telephony



Satellite RoIP Application

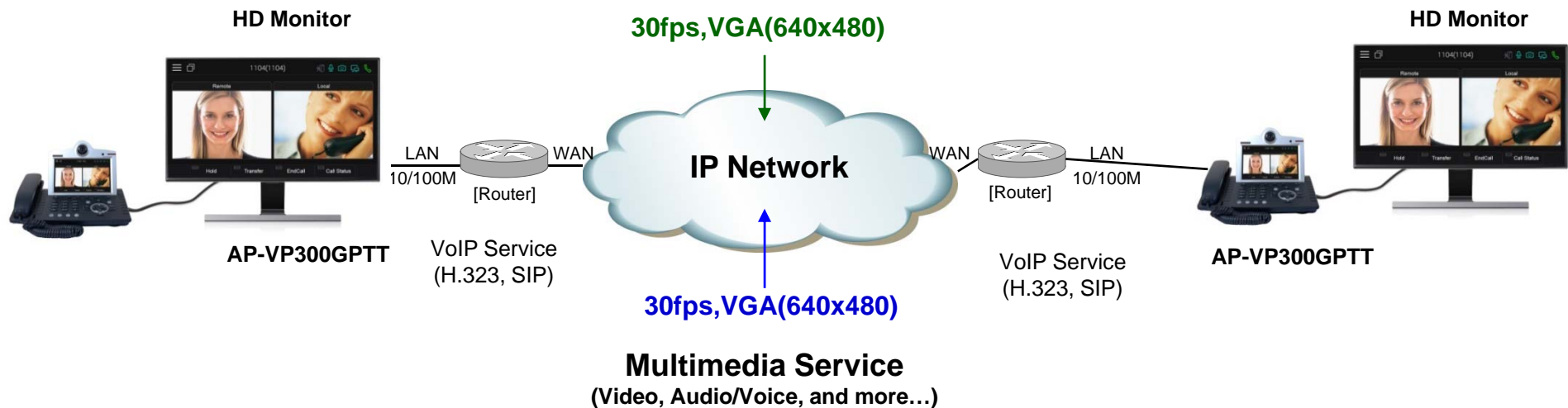
AP-VP300GPTT PTT Control IP Video Terminal



Video Telephony Application

AP-VP300GPTT PTT Control IP Video Terminal

Point-to-Point Video Service (symmetric video quality)



Ordering Information

- **AP-VP300GPTT PTT Control IP Video Terminal Hardware**
 - RISC Microprocessor with High-end Programmable DSP Architecture
 - 7 Inch LCD, Built In CCD Camera, Touch Screen
 - External Video RCA Input/Output, HDMI Video Output
 - 3.5mm Audio Input/Output
 - 2-ports 10/100/1000Mbps Gigabit Ethernet and 1-port RS-232C Console
 - Rotary Switch for VHF Frequency Channel Switch.
 - 1-Port PTT MIC Interface for Motorola PTT MIC. etc.
 - Option : PoE Interface
 - Option : USB Interface
 - Including Network Cable Set & Ext. Power Supply, etc.
- **Built-in APOS Internetworking Software for AP-VP300GPTT**
- **Including 1 Year Hardware Warranty**
- **Product Documents**
 - Install and Operation Guide (PDF)
- **Pricing**
 - AddPac Technology Regional Sales Manager
 - Authorized Sales and Marketing Representatives



Thank you!

AddPac Technology Co., Ltd.
Sales and Marketing

Phone +82.2.568.3848 (KOREA)

FAX +82.2.568.3847 (KOREA)

E-mail sales@addpac.com