

AddPac IP-PBX, IP Phone Interworking with BroadWorks Hosted PBX



Interworking
Demonstration

AddPac

AddPac Technology

Sales and Marketing

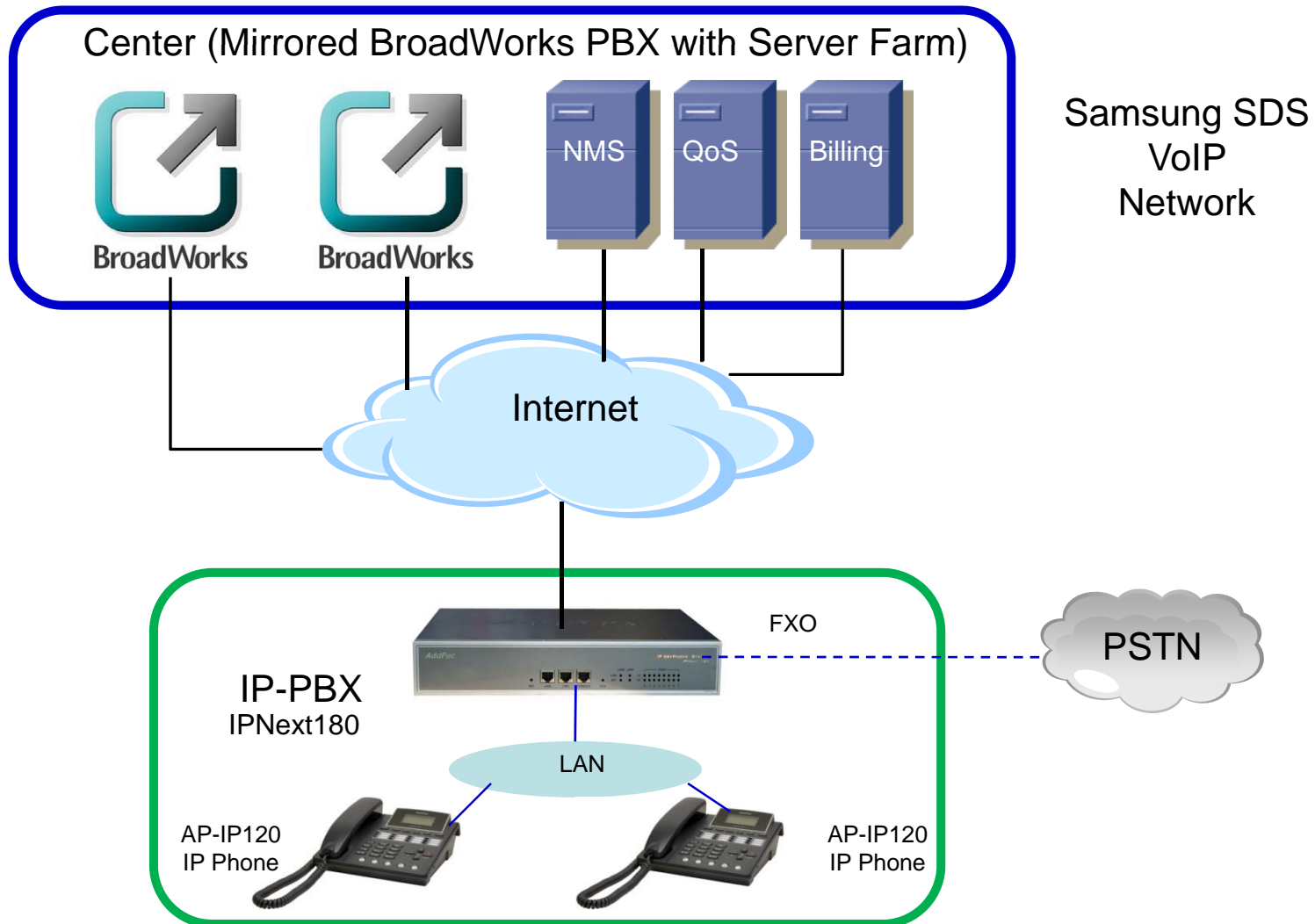
Contents

- Broadworks Softswitch Interworking Overview
- Network Diagram
- IP-PBX IPNext180 Hardware Overview
- AddPac IP-PBX Solution Advantage
 - Flexible Configuration Supporting
 - Advanced Interworking to Broadworks
 - Operating System Supports with Broadworks
- IP Phones
- Interworking Demo.

Overview

- One of the largest bank in Korea, NH Bank, has deployed AddPac's IP-PBX, VoIP Gateway, and IP Phone which are interworking with BroadSoft's BroadWorks Hosted PBX.
- In scalability, more than 5300 AddPac IP-PBX with Gateway have been running well at NH bank Branches since 2008.
- Various AddPac's IP Phone Models and Video Phone Models has been testing for interworking with BroadWorks and will be deployed to the Bank.

Network Diagram



IPNext180 Hybrid IP-PBX



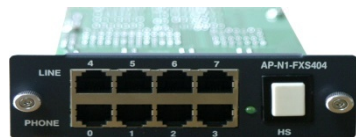
< Front >

- 2 port 10/100Mbps Ethernet Interface
- 1 port RS-232C Console Interface
- PORT LED

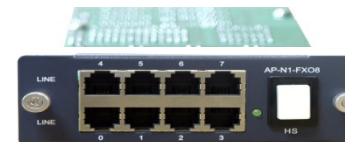


< Back >

- 2 VoIP Module Slot
 - ✓ Max. 16 Port VoIP Analog Interface
 - ✓ Max. 1 Port(30channel) Digital E1 Interface
- Ground



< AP-N1-FXO4S4 Module >



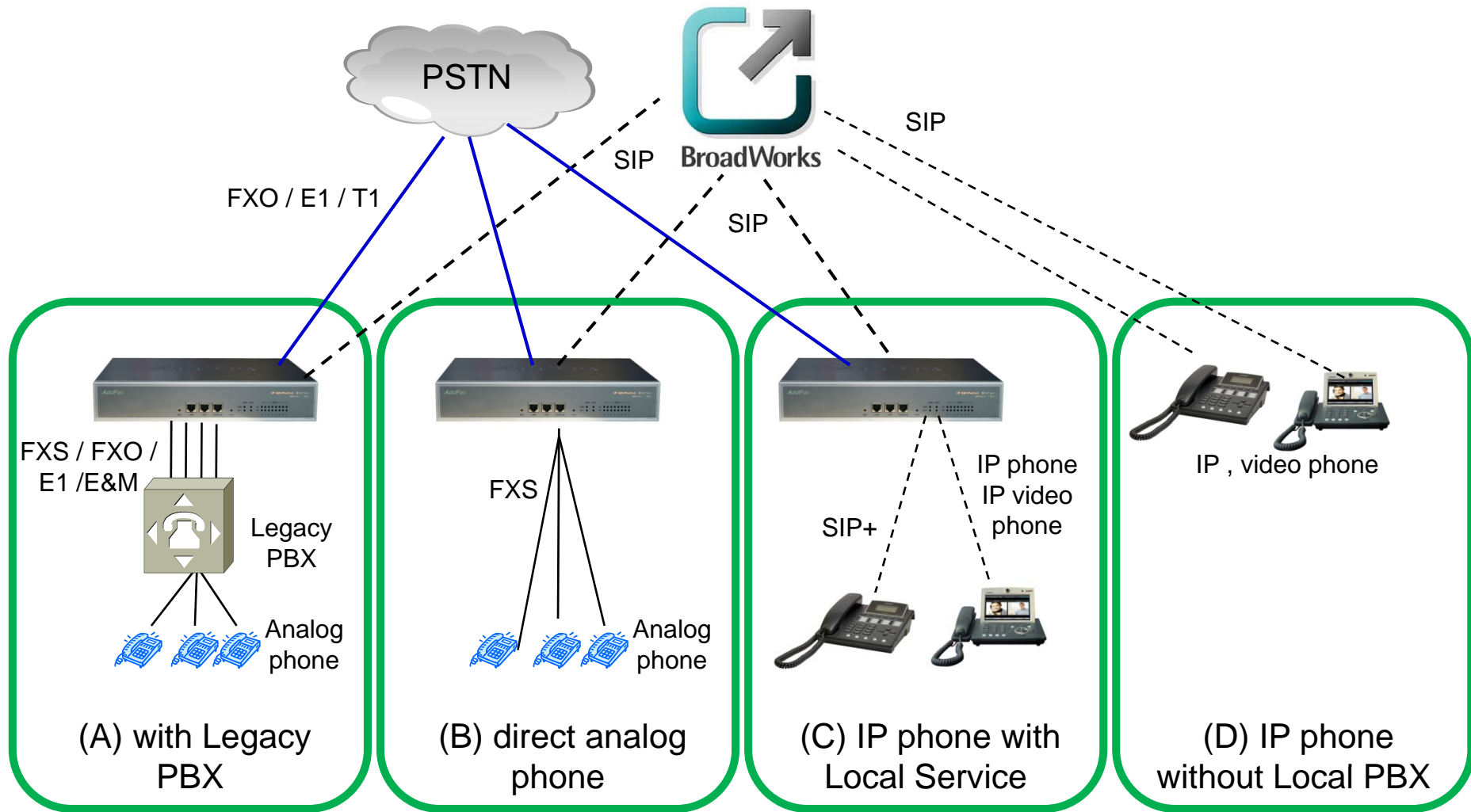
< AP-N1-FXS8 Module >

AddPac IP-PBX Solution Advantage

1. AddPac IP-PBX's Flexible VoIP Modules with Powerful Call Control Feature Supports All Combinations of Branch Phone System Conditions.
2. AddPac IP-PBX Supports Advances Interworking Features with BroadWorks Center PBX, such as Mirrored BroadWorks for Fault Tolerant, 3 Party Call, and BLF(Busy Lamp Field).
3. AddPac IP-PBX Supports Advances Operating Features with the Center Deployed Operating Servers such as Billing Server, QoS Server, NMS Server which use BroadWorks APIs.

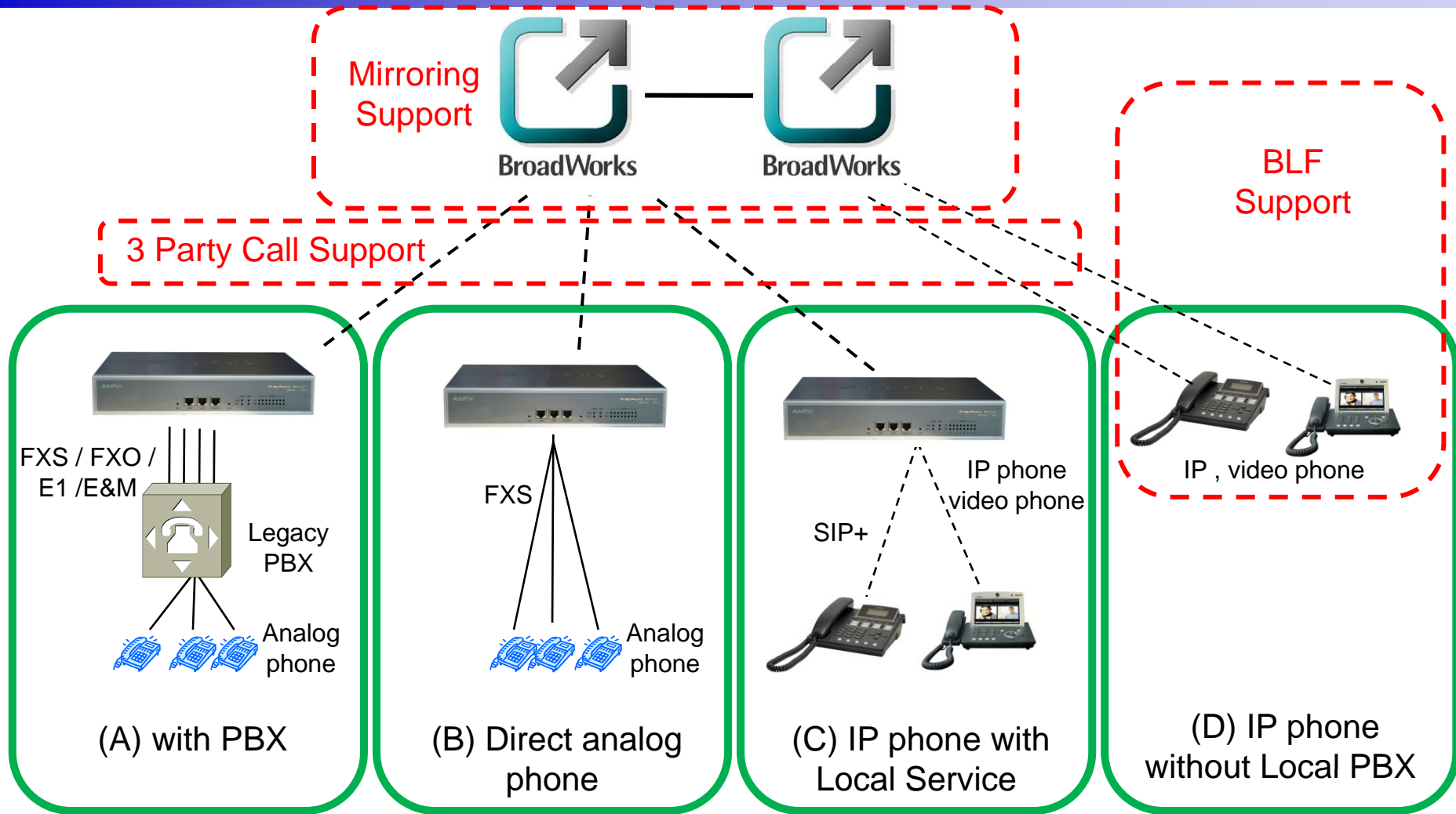
Advantage 1

Flexible Configuration Supporting



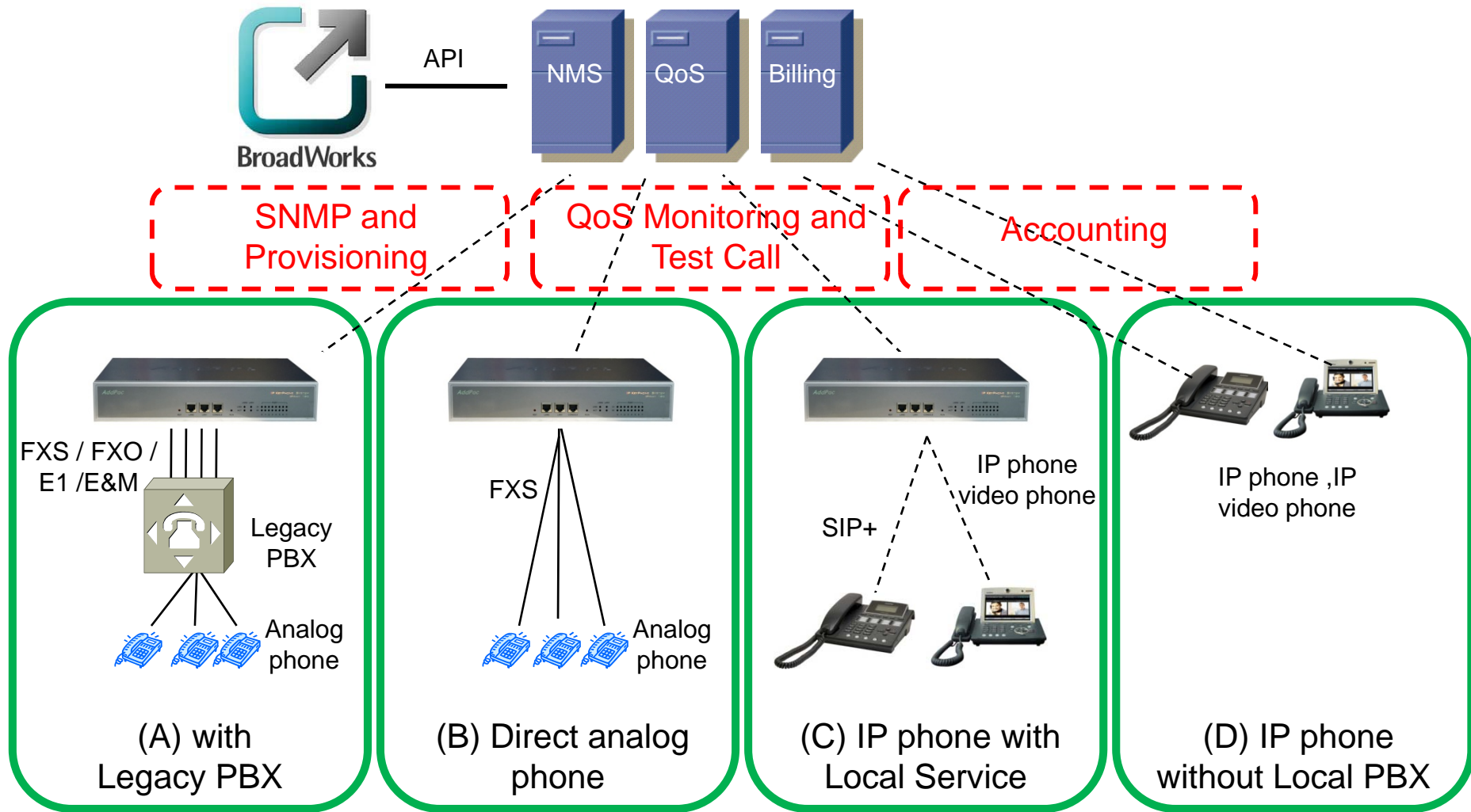
Advantage 2

Advanced Interworking to BroadWorks

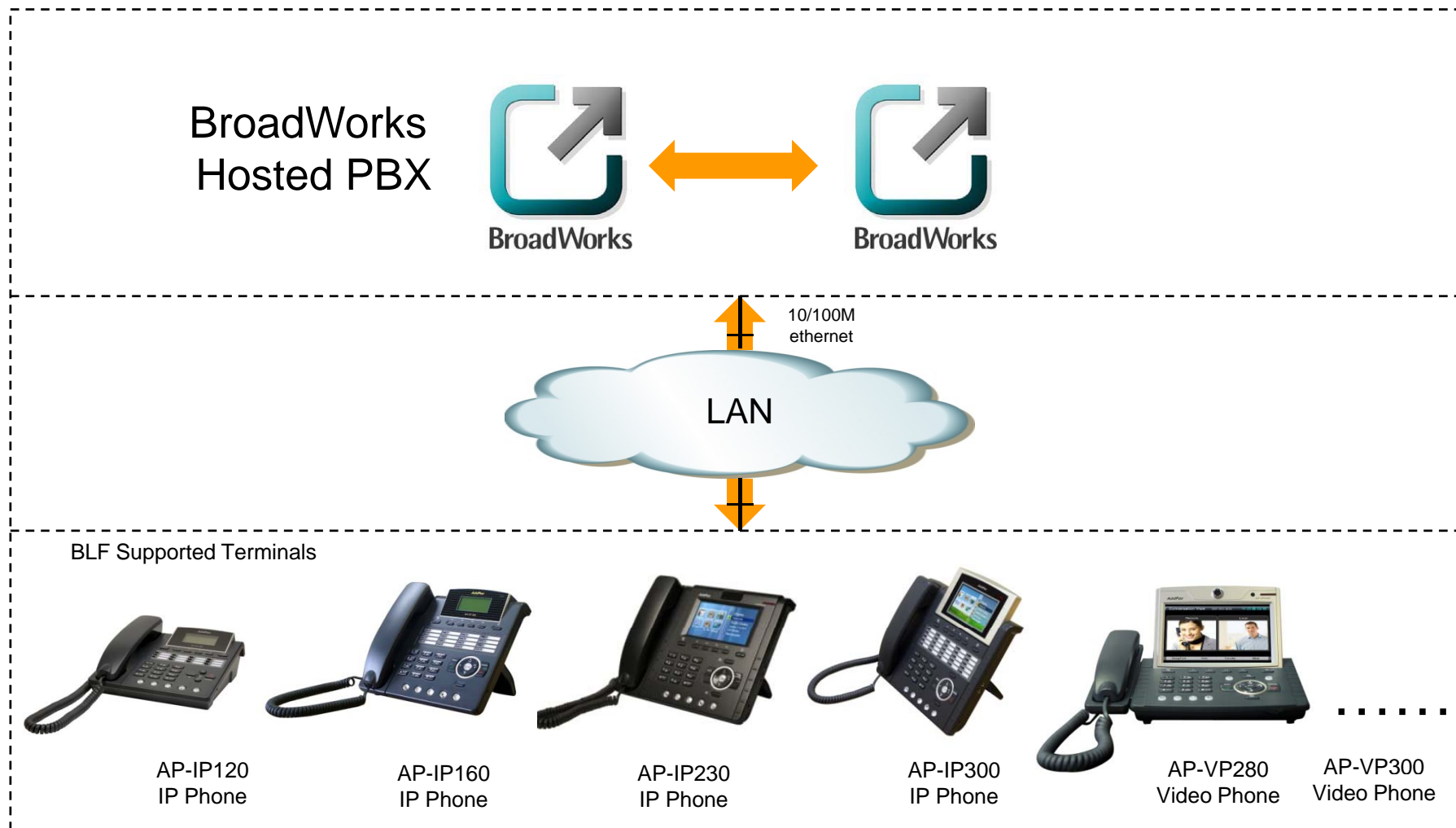


Advantage 3

Operating System Support with BroadWorks



IP Phone Interworking



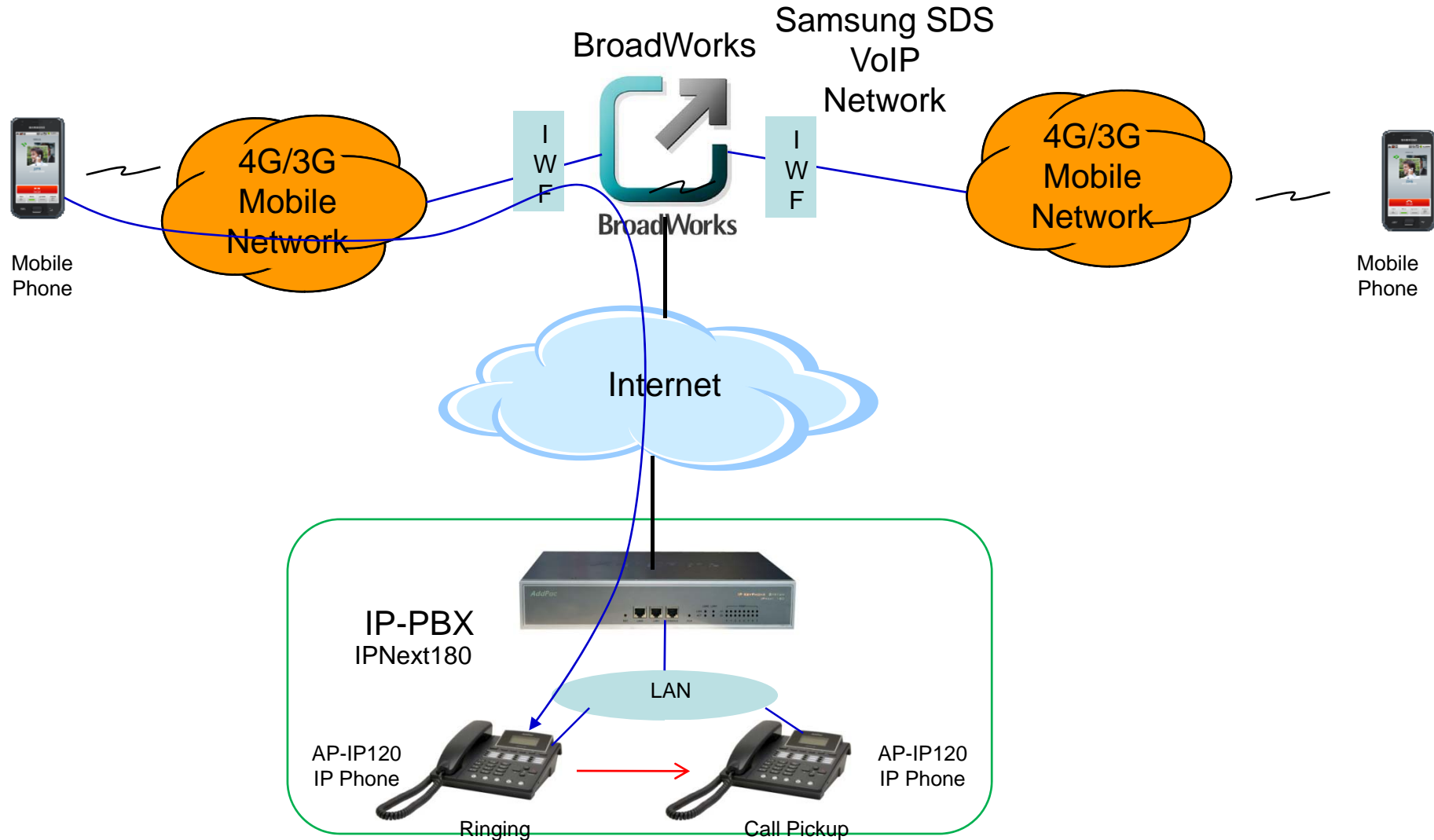
IP Phone Comparison Table

	AP-IP300 	AP-IP230 	AP-IP160 	AP-IP120 	AP-IP90 
LCD Size	4.3 Inch Color LCD	5 Inch Color LCD	4 Text Line Graphic LCD	4 Text Line Graphic LCD	4 Text Line Graphic LCD
Touch Screen	N/A	Support	N/A	N/A	N/A
Speed-Dial Keys	25 Key with Presence LED	Touch Screen based 25 Keys	16 Key with Presence LED	12 Key with Presence LED	N/A
Voice Codec	G.711/G.726/ G.729/G.723	G.711/G.726/ G.729/G.723	G.711/G.726/ G.729/G.723	G.711/G.726/ G.729/G.723	G.711/G.726/ G.729/G.723
Signaling	H.323/SIP	H.323/SIP	H.323/SIP	H.323/SIP	H.323/SIP
3-Party Conversation	Support	Support	Support	Support	Support
LAN Port	2	2	2	2	2
PoE(Optional)	Support	Support	Support	Support	Support
FXO(Optional)	Support	Support	Support	Support	Support

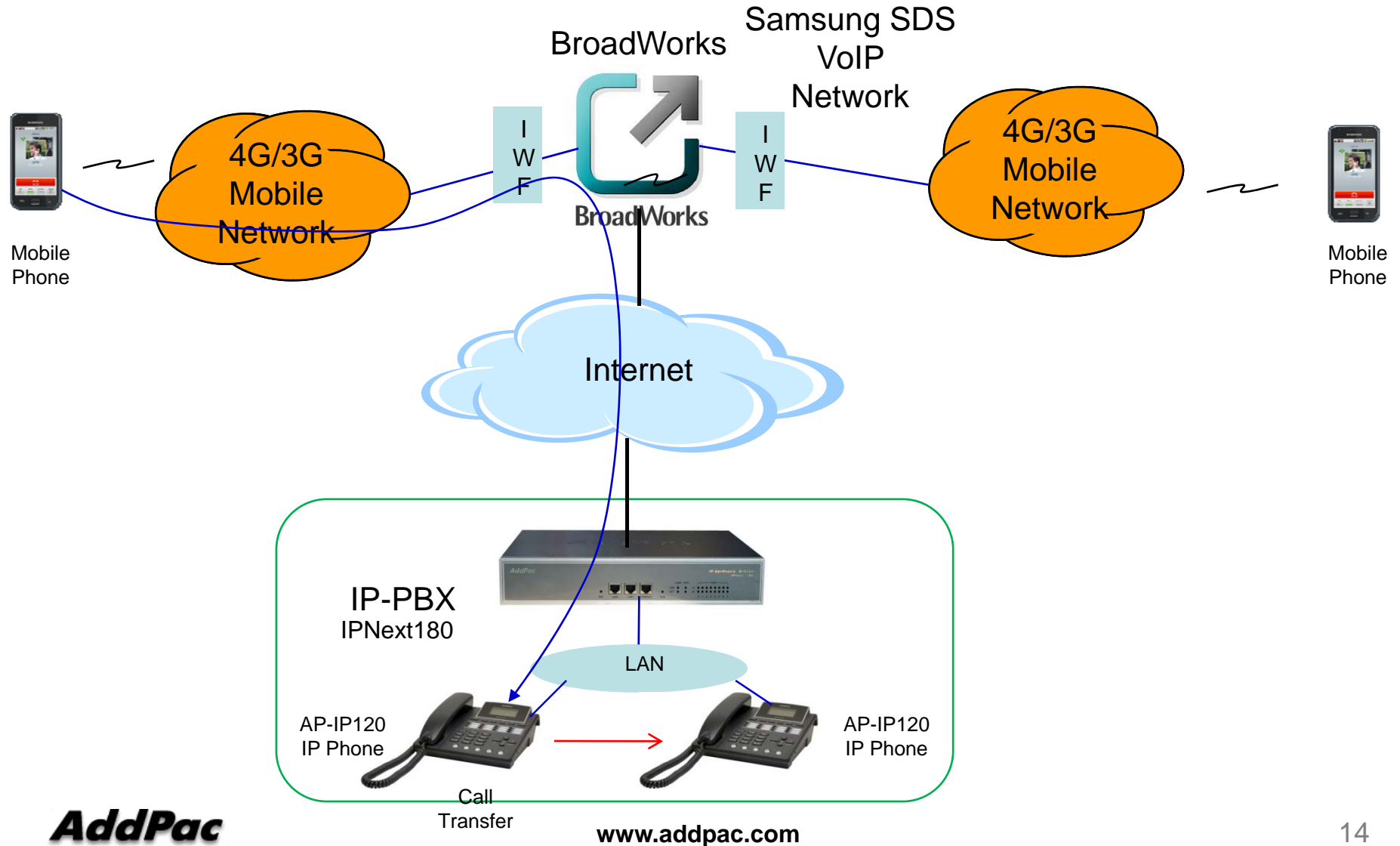


Interworking Demonstration

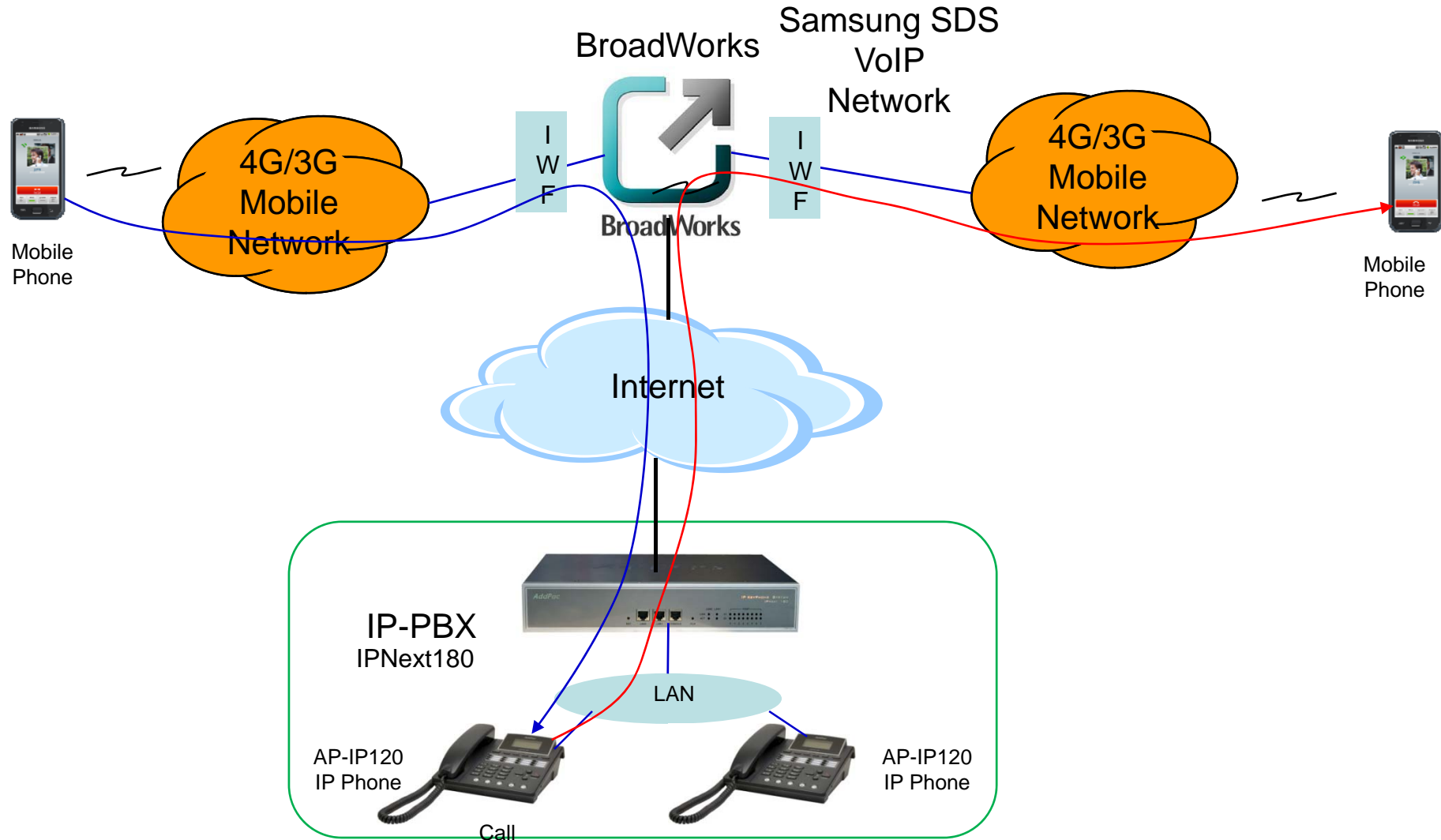
Incoming Call Pickup at Other IP Phone



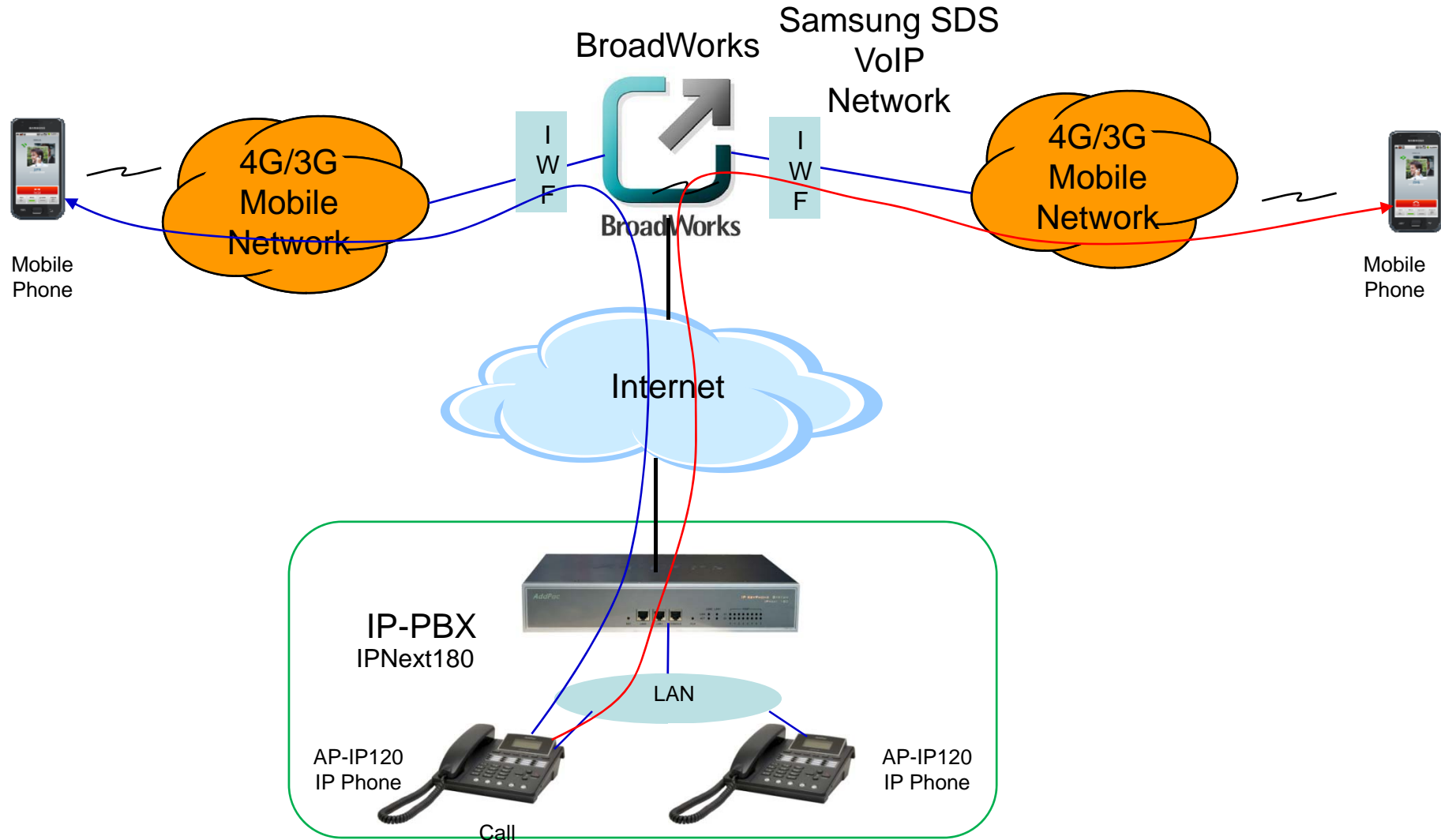
Incoming Call Transfer to Other IP Phone



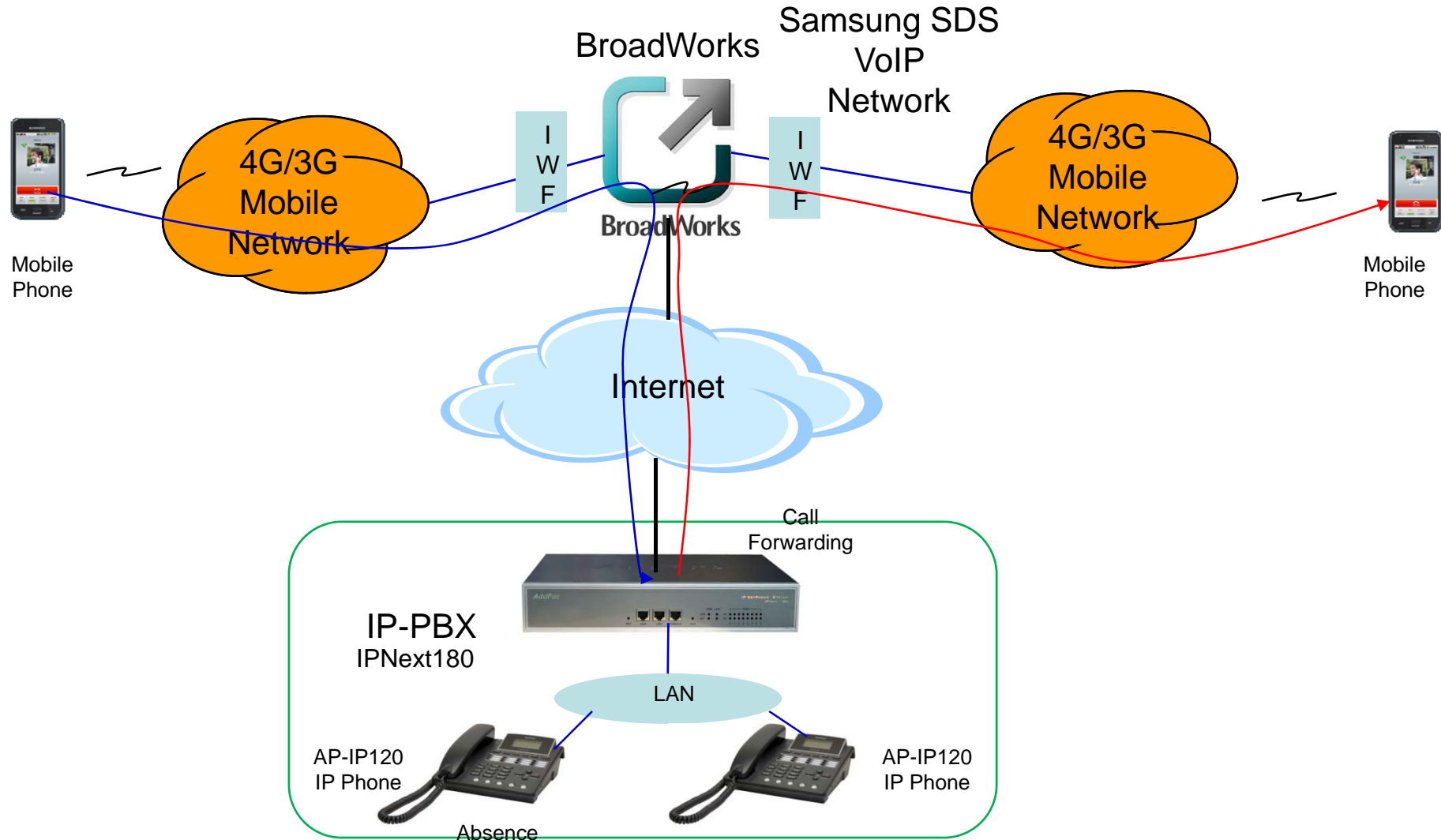
Incoming Call Transfer to Other Smart Phone



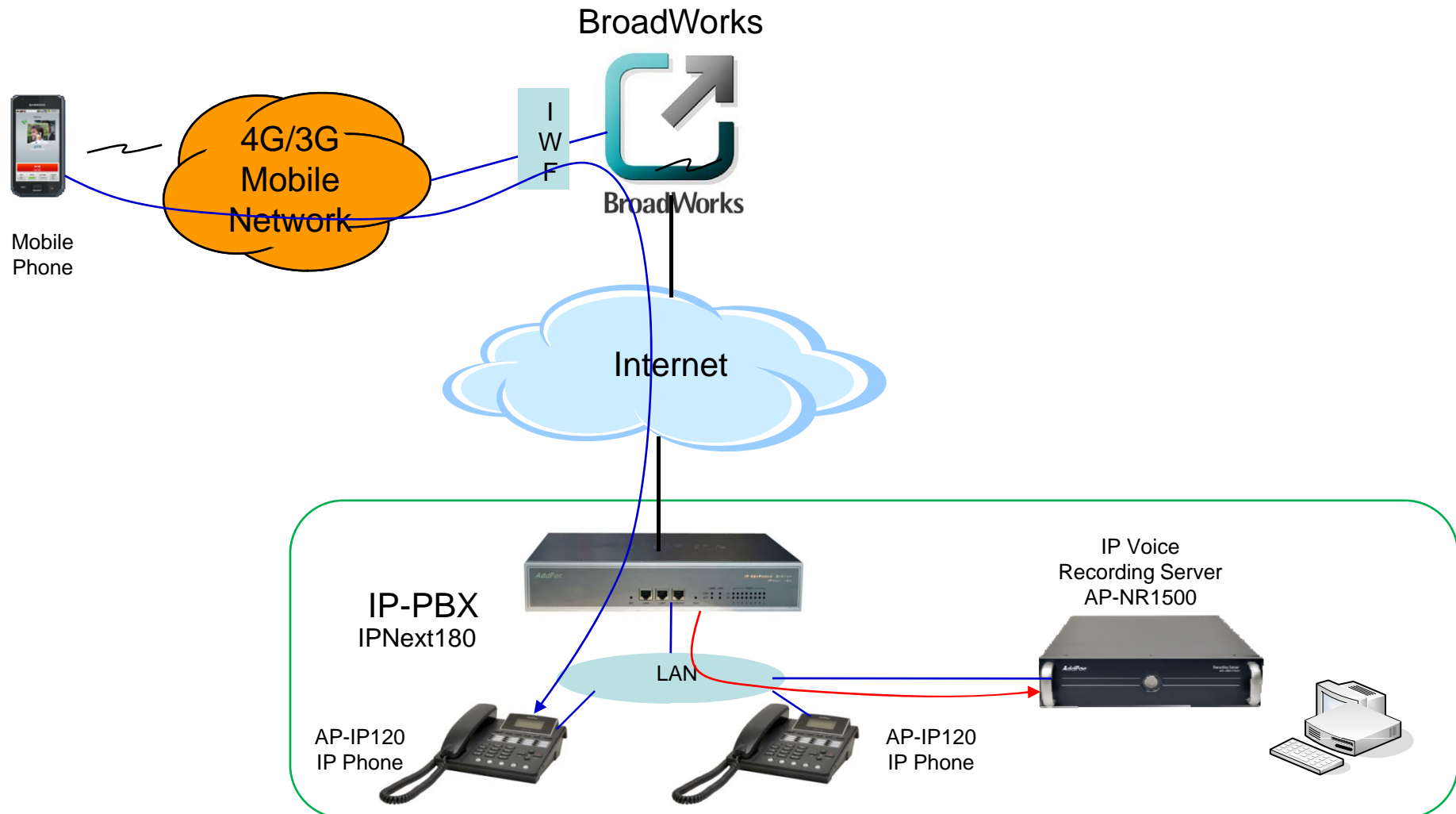
Outgoing Call Transfer to Other Smart Phone



Call Forwarding at Absence



Voice Recording





Thank you!

AddPac Technology Co., Ltd.
Sales and Marketing

Phone +82.2.568.3848 (KOREA)

FAX +82.2.568.3847 (KOREA)

E-mail : sales@addpac.com