

Compact Size SIP Paging Terminal Solution



AddPac

AddPac Technology

Sales and Marketing

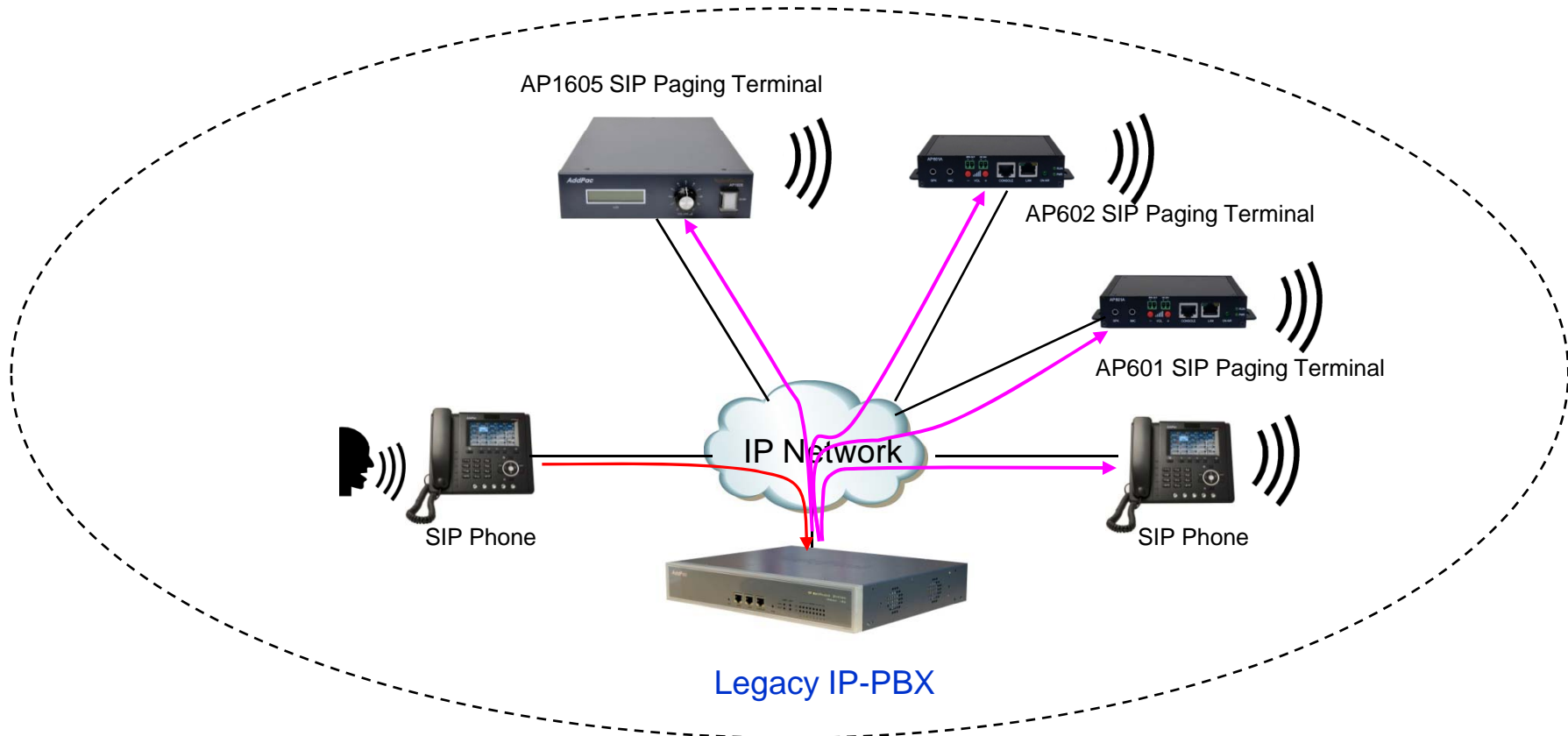
www.addpac.com

Contents

- SIP Paging Call Service Diagram
 - Legacy IP-PBX Service Mode (Simple Service)
 - IP-PBX Clone Service Mode (Advanced Service)
- SIP Paging Product Solution
- SIP Paging Call Source, Destination, and Scenario
- Product Specifications
 - SIP Paging Server : AP-SPS10000, AP-SPS600
 - SIP Paging Terminals: AP601, AP602
 - SIP Phones for Paging Service : AP-IP300, AP-IP120
 - SIP Paging Management Software : AP-SPMS

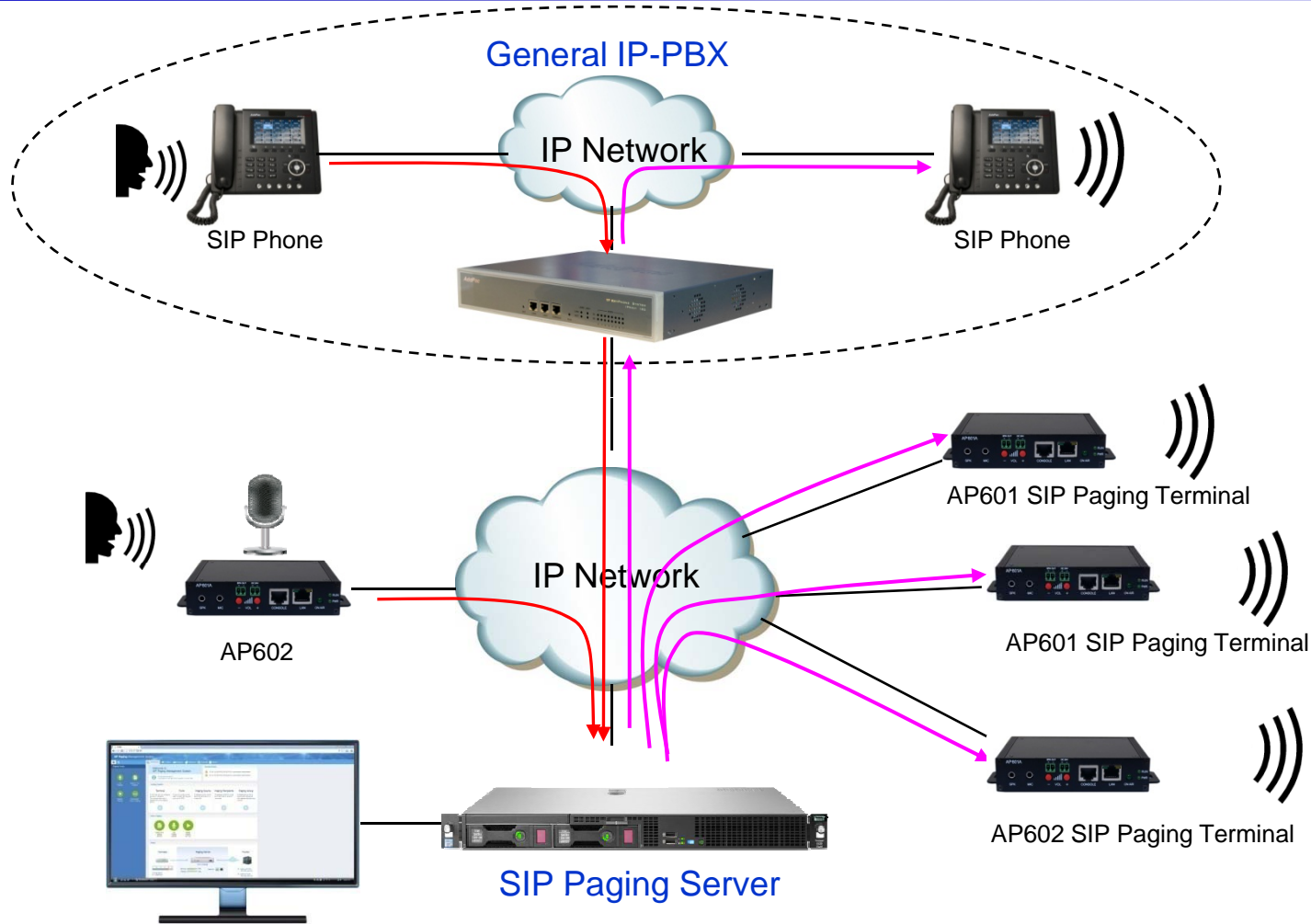
SIP Paging Call Service Network Diagram

- Legacy IP-PBX Service Mode (Simple Service)



SIP Paging Call Service Network Diagram

- IP-PBX Clone Service Mode (Advanced Service)



AP-SPMS : SIP Paging Management Software



SIP Paging Product Solution

SIP Paging Management S/W	SIP Paging Servers	SIP Paging Terminals	SIP Phone for Paging Service
 AP-SPMS	 AP-SPS10000	 AP601	 AP-IP300 + AP-PT20x2
	 AP-SPS600	 A602	 AP-IP120 + AP-PT20x2

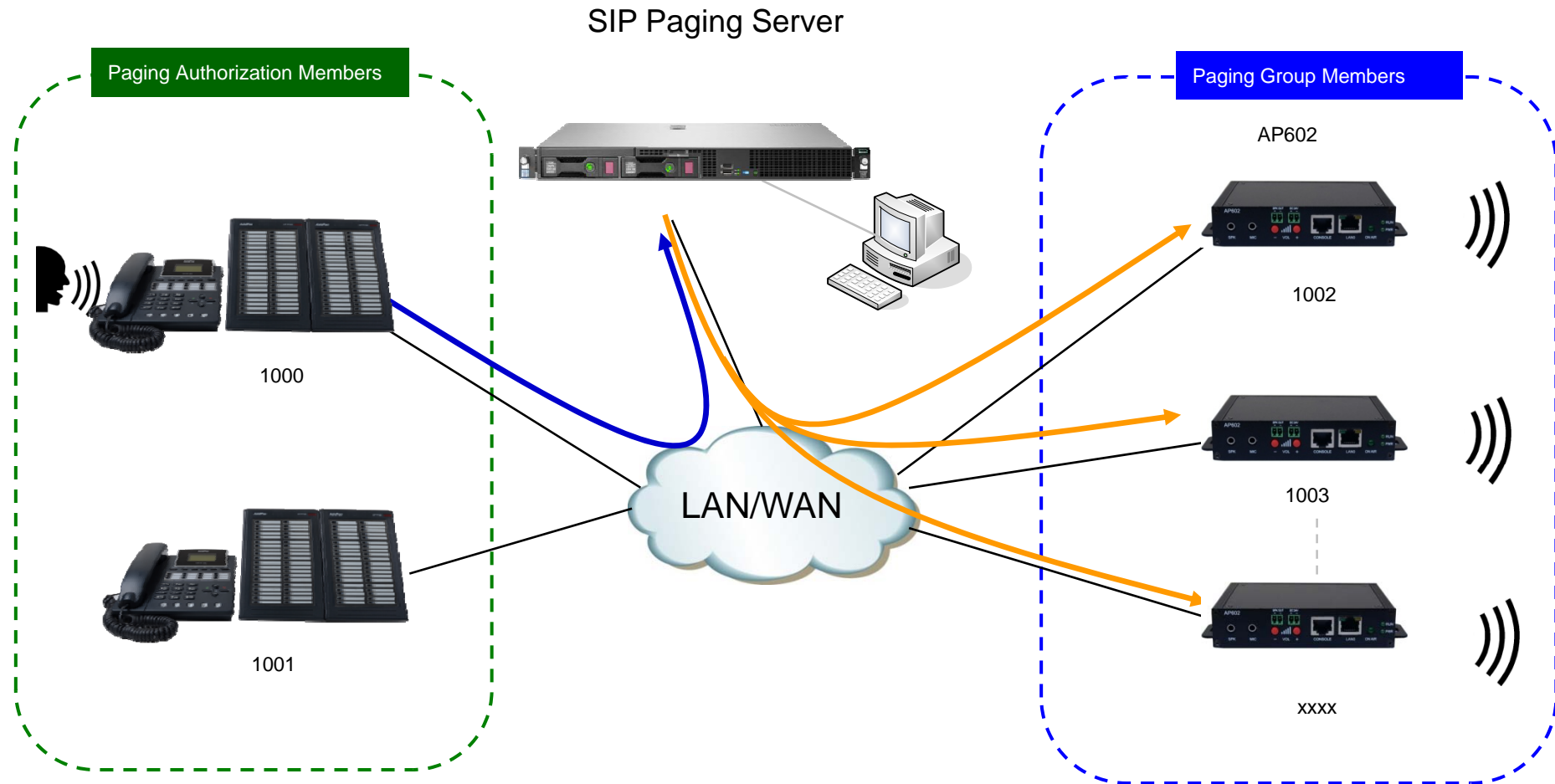


SIP Paging Terminals

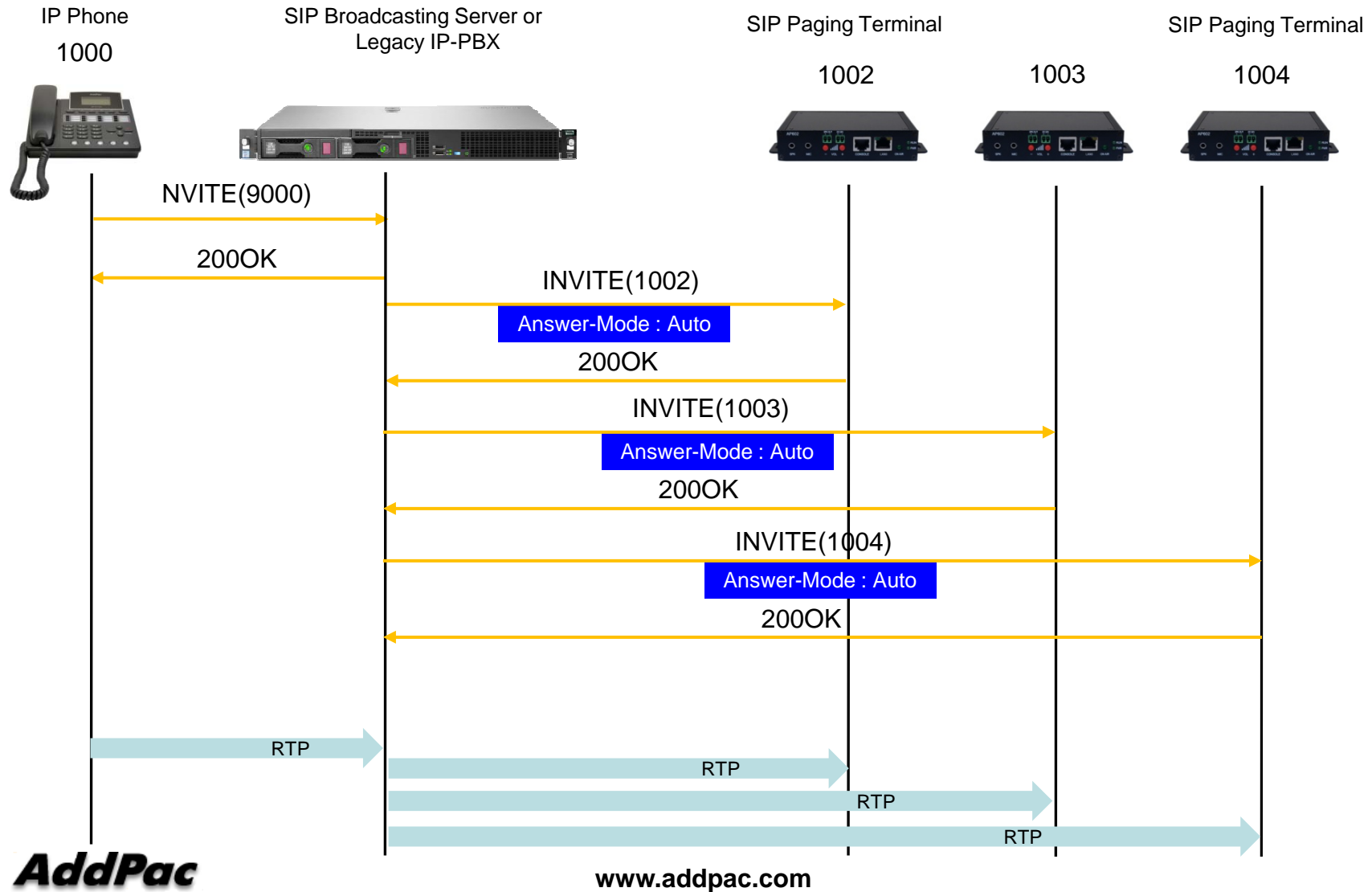
Comparison Table

	AP601	AP602
		
VoIP Paging Protocol	SIP, Proprietary Protocol	SIP, Proprietary Protocol
VoIP Codecs	G.722(16Khz),G.711,G.726,G.729A,etc	G.722(16Khz),G.711,G.726,G.729A,etc
Built-in AMP. (Option)	40watt at 8ohm (Terminal Block, SPK+-Connector)	40watt at 8ohm (Terminal Block, SPK+-Connector)
LAN Port	One(1) 10/100Mbps Fast Ethernet (1 x RJ45)	Two(2) 10/100Mbps Fast Ethernet (2 x RJ45)
Volume Control	UP, DOWN Button	UP, DOWN Button
ON-AIR LED	Support	Support
Audio Interface	3.5mm SPK Output, MIC. Input	3.5mm SPK Output, MIC. Input
RS232C Port	Support	Support
I/O Interface	N/A	Alarm Input 1Port, Relay Output 1Port
I2C Interface	N/A	Support

SIP Broadcasting Network Diagram



Paging Group Signaling Flow



AP601

SIP Paging Terminal



Product Overview

AP601 SIP Paging Terminal

- SIP based Voice Broadcasting Terminal Solution
- Hardware Architecture for Voice Broadcasting Terminal Service
- Remote Broadcasting Service at terminal side
- High Quality Voice Codec Support (G.722(16KHz), G.711, G.726, G.729A, etc)
- RTP/UDP Protocol Support
- Unicast and Multicast Broadcasting Scheme
- SPMS (SIP Paging Management Software) Support
- One(1) channel SPK/MIC Port
- Volume Control Button Support (Up, Down)
- Option (AP601A) : AMP. Built-in, 40watt
- High-Quality Audio/Voice Service
- Firmware Upgradeable Architecture
- Broadcasting Solution with Outstanding Network Service Capability
- External Power Supply

Hardware Specification

AP601 SIP Paging Terminal



RISC
CPU

High-end
DSP

- RISC Microprocessor Computing Power
- High-end Programmable DSP Hardware Architecture
- High Quality Audio Encoding/Decoding Service
- One(1) 10/100Mbps Fast Ethernet (RJ45)
- One(1) RS-232C Interface (RJ45)
- SPK/MIC Audio Interface Support
- Volume Control Button Support (Up, Down)
- External Power Supply Support
- Option : 30Watt Digital AMP. Built-in (AP601A)

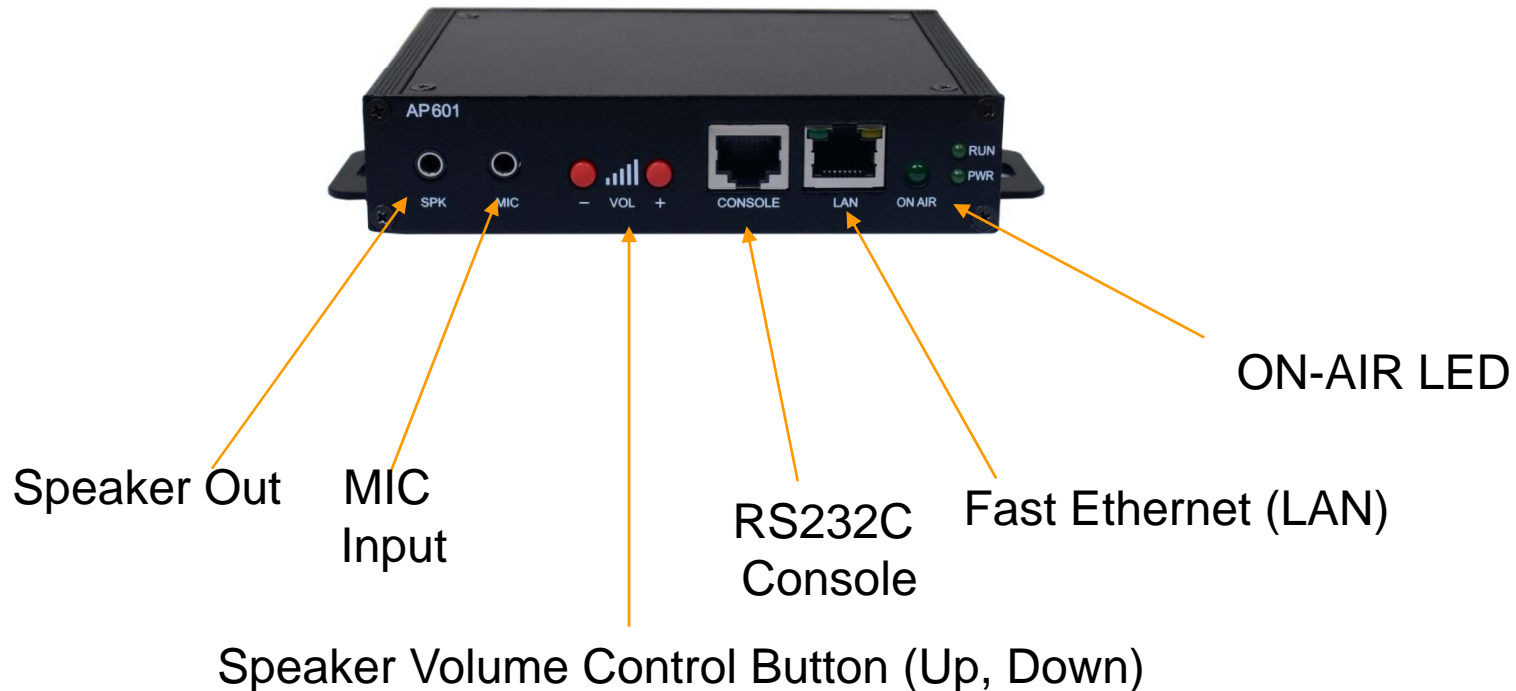
Hardware Specification

AP601 SIP Paging Terminal

RISC
CPU

High-end
DSP

Front Side



Hardware Specification

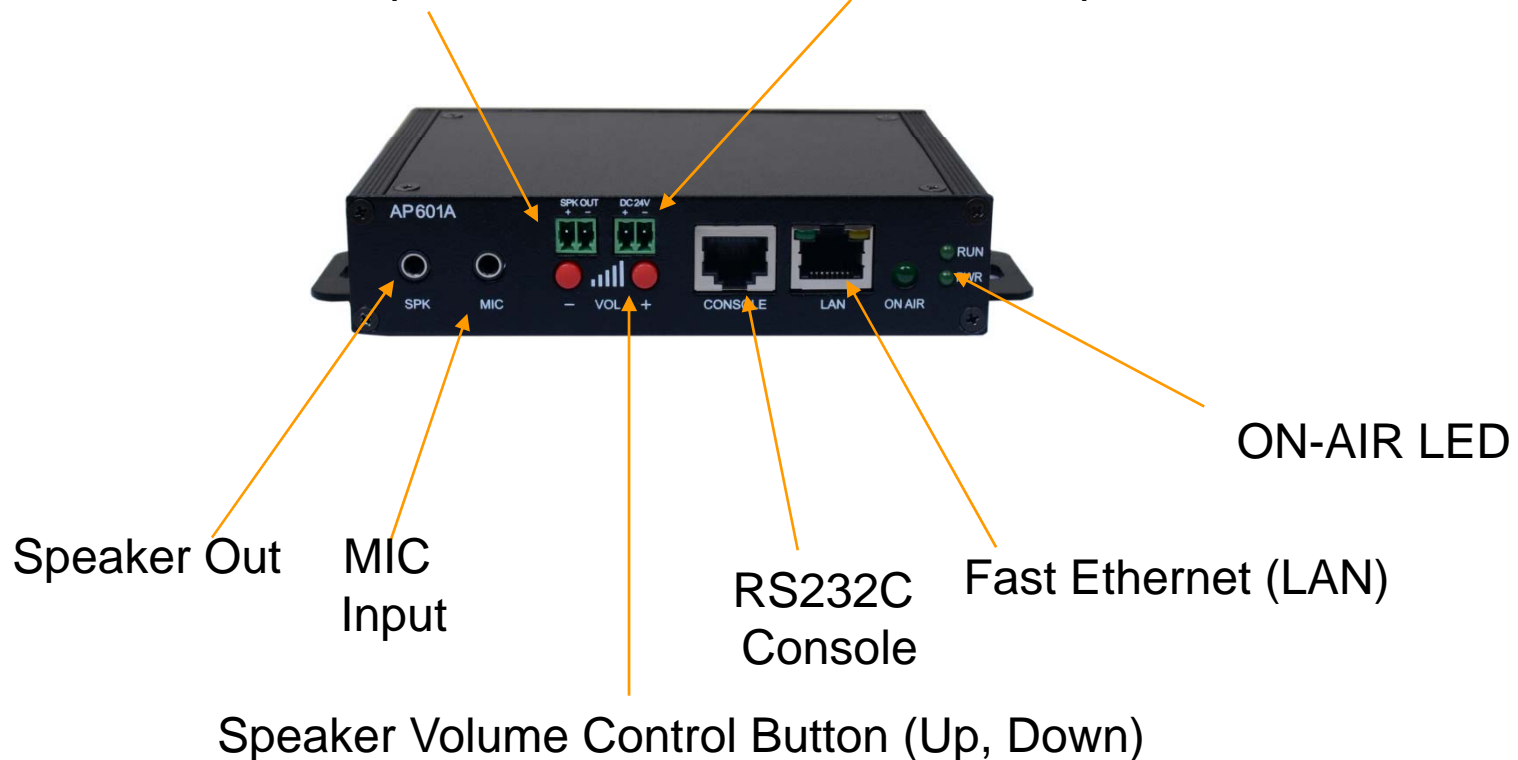
AP601 SIP Paging Terminal

RISC
CPU

High-end
DSP

Front Side (AMP. Built-In Model : AP601A)

AMP. Speaker Out 24V DC Power Input for Internal AMP.



Hardware Specification

AP601 SIP Paging Terminal

RISC
CPU

High-end
DSP

Back Side



External Power
Supply Adaptor

Power Switch

AP602

SIP Paging Terminal



Product Overview

AP602 SIP VoIP Paging Terminal


- SIP based Voice Broadcasting Terminal Solution
- Hardware Architecture for Voice Broadcasting Terminal Service
- Remote Broadcasting Service at terminal side
- High Quality Voice Codec Support (G.722(16KHz), G.711, G.726, G.729A, etc)
- RTP/UDP Protocol Support
- Unicast and Multicast Broadcasting Scheme
- SPMS (SIP Paging Management Software) Support
- One(1) MIC Port 3.5mm Connector, One(1) SPK Port : 3.5mm Connector
- Volume Control Button Support (Up, Down)
- Option (AP602 : Model A) : AMP. Built-in, Terminal SPK Port
- Two(2) 10/100Mbps Fast Ethernet LAN Port
- High-Quality Audio/Voice Service
- Firmware Upgradeable Architecture
- Broadcasting Solution with Outstanding Network Service Capability
- External Power Supply

Hardware Specification

AP602 SIP VoIP Paging Terminal

A dark blue square with a light blue border containing the text "RISC CPU" in white.

RISC
CPU

A dark blue square with a light blue border containing the text "High-end DSP" in white.

High-end
DSP

- RISC Microprocessor Computing Power
- High-end Programmable DSP Hardware Architecture
- High Quality Audio Encoding/Decoding Service
- Two(2) 10/100Mbps Fast Ethernet (RJ45)
- One(1) RS-232C Interface (RJ45)
- SPK/MIC Audio Interface Support
- Volume Control Button Support (Up, Down)
- External Power Supply Support
- Option : 40Watt Digital AMP. Built-in (AP602 : Model A)
- Option : I/O Interface (Alarm Input 1Port, Relay Output 1Port, I2C Interface)

Hardware Specification

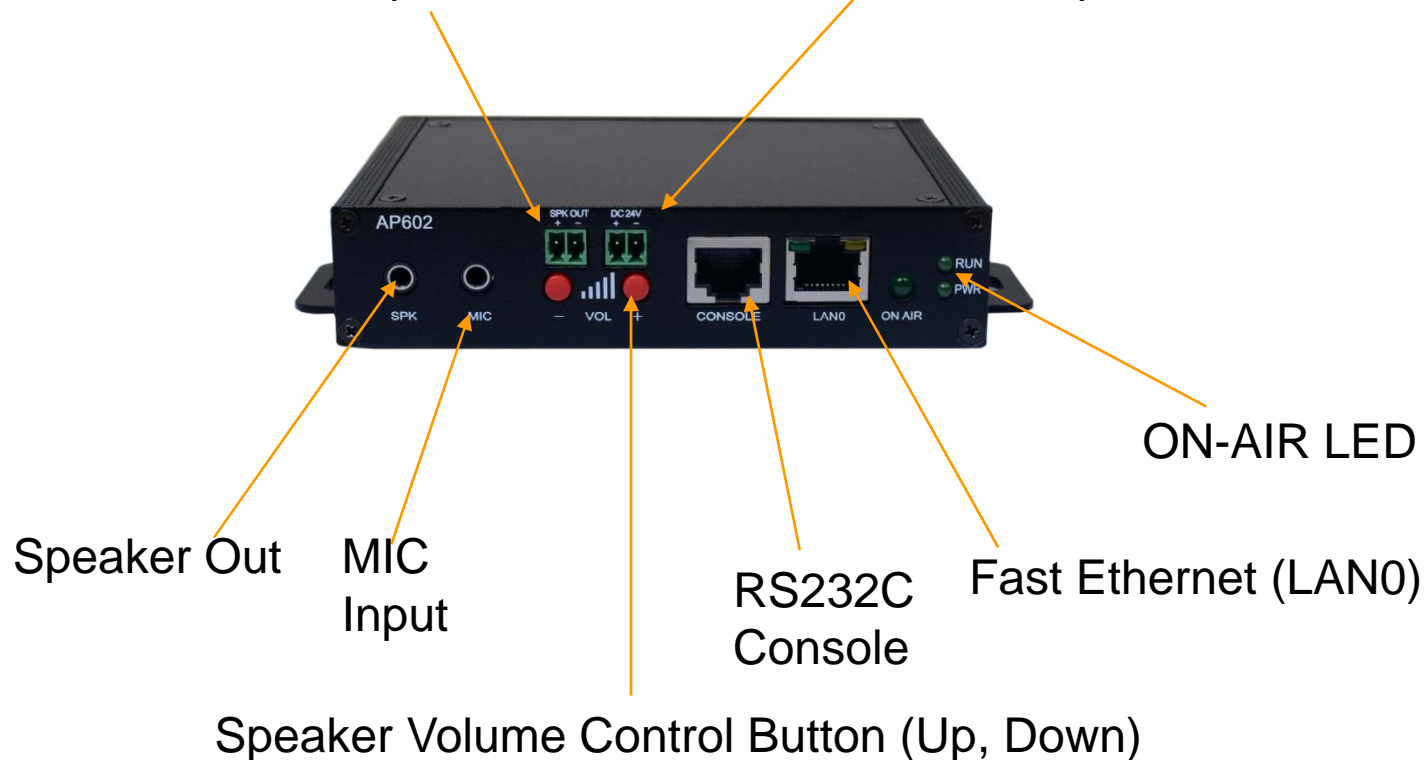
AP602 SIP VoIP Paging Terminal

RISC
CPU

High-end
DSP

Front Side (AMP. Built-In Model : AP602 : Model A)

AMP. Speaker Out 24V DC Power Input for Internal AMP.



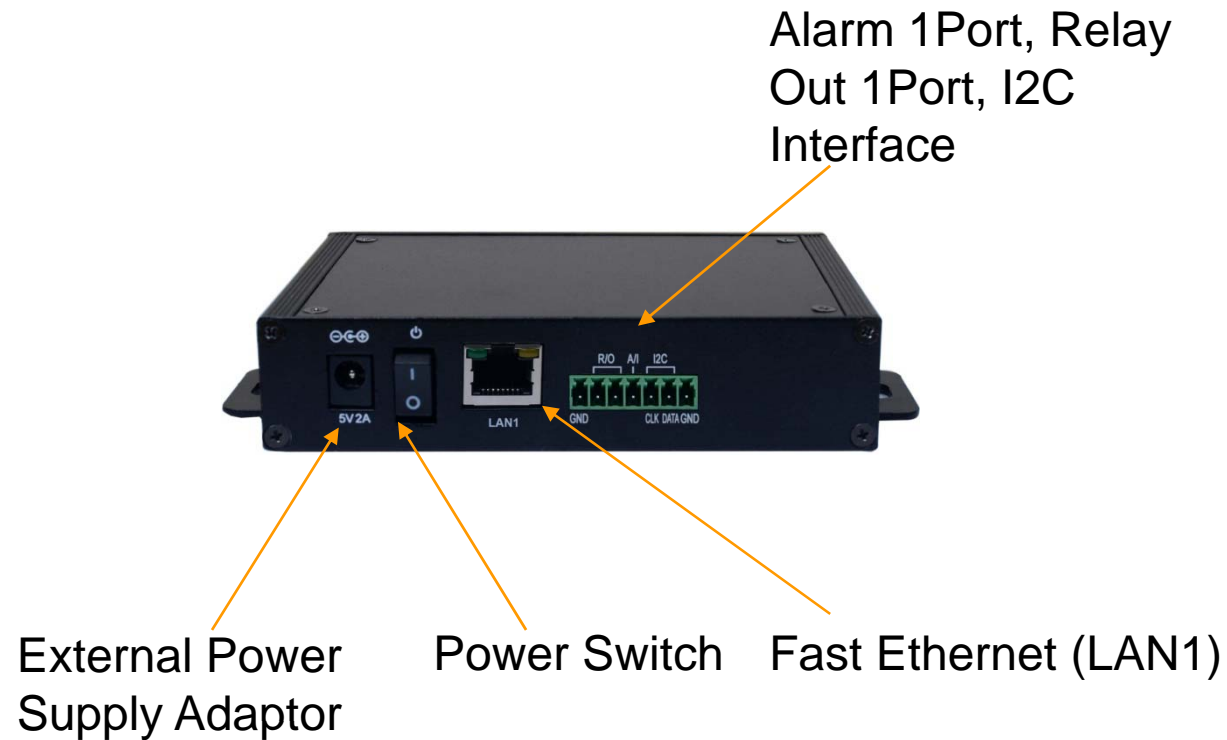
Hardware Specification

AP602 SIP VoIP Paging Terminal

RISC
CPU

High-end
DSP

Back Side





Thank you!

AddPac Technology Co., Ltd.
Sales and Marketing

Phone +82.2.568.3848 (KOREA)

FAX +82.2.568.3847 (KOREA)

E-mail sales@addpac.com