

AP3840N V.35 Leased-Line Gigabit Ethernet Router

High Performance V.35 Leased Line Routing Solution

V.35 Leased-Line Gigabit Ethernet Router



AddPac

AddPac Technology

Sales and Marketing

www.addpac.com

Contents

- Product Overview
- Product Highlights
- Hardware Specification
- Software Service
- Network Service and Features
- Application Area
- Ordering Information

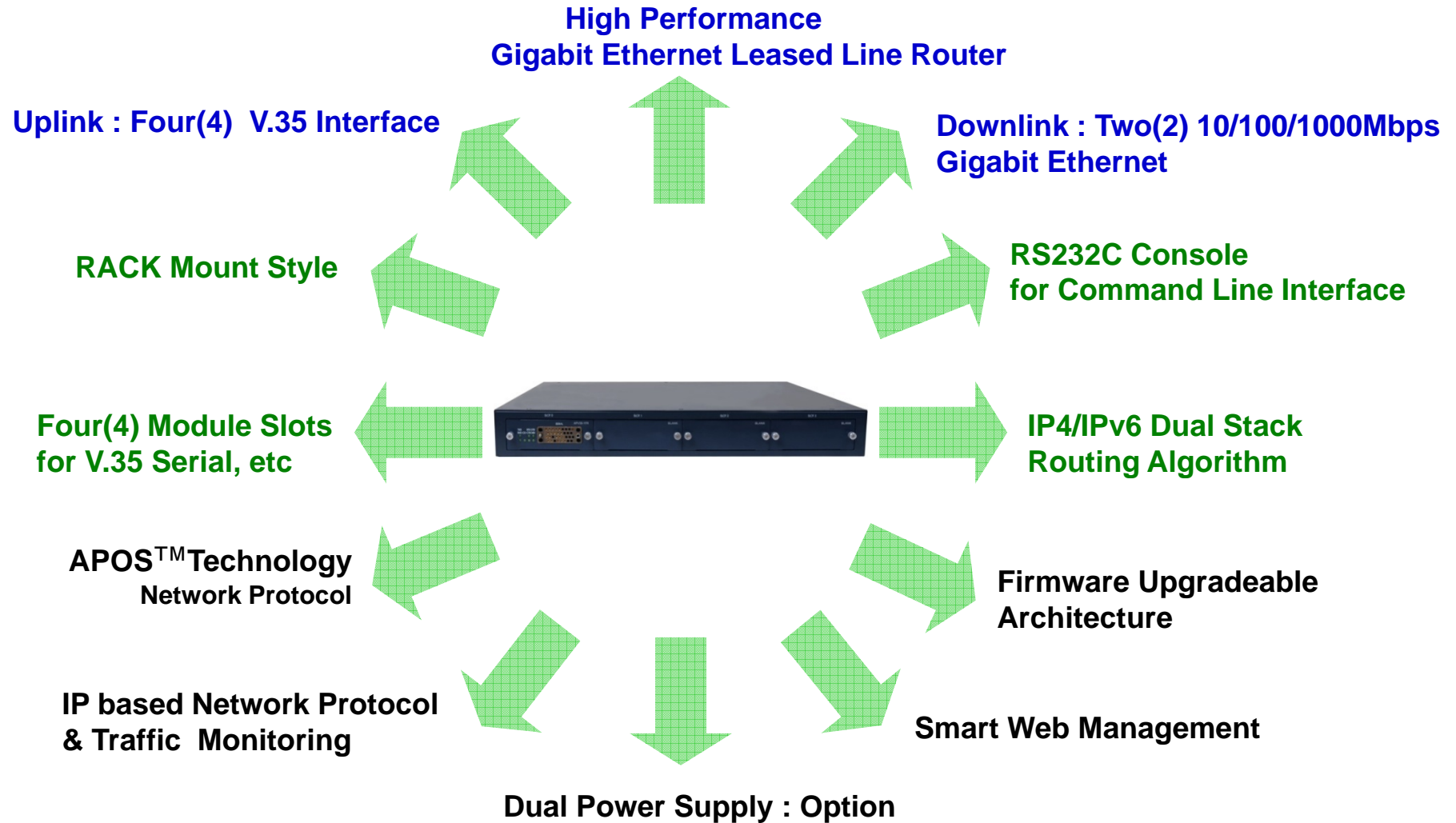
Product Overview

AP3840N Gigabit Ethernet V.35 Leased-Line Router

- Embedded Hardware System and Real-Time OS
- V.35-to-LAN Routing Support
- IPv4/IPv6 Dual Stack Support
- Overload Control Support
- Support Various Network Protocols
- Uplink : Four(4) V.35 Interface, Downlink : Two(2) Gigabit Ethernet
- Four(4) Module Slots for V.35 Serial Interface, etc
- Dual Power Supply : Option
- Powerful Management and User Friendly Features
- CLI Interface for Detailed Control
- Smart Web Management
- Firmware Upgradeable Architecture

Product Highlights

AP3840N Gigabit Ethernet V.35 Leased-Line Router



Hardware Specification

AP3840N Gigabit Ethernet V.35 Leased-Line Router

- High-End RISC Microprocessor Computing Power
- Main Chassis
 - Network Interface
 - Uplink : Four(4) Module Slots for V.35 Serial Interface, etc
 - Downlink : Two(2) 10/100/1000Mbps Gigabit Ethernet
 - One(1) RS-232C Console (RJ45)
 - Memory
 - DDR memory : Up to 4G
 - Flash Memory : Up to 8G NAND
 - Power Supply
 - Internal Power Supply (Free Voltage)
 - Dual Power Supply : Option



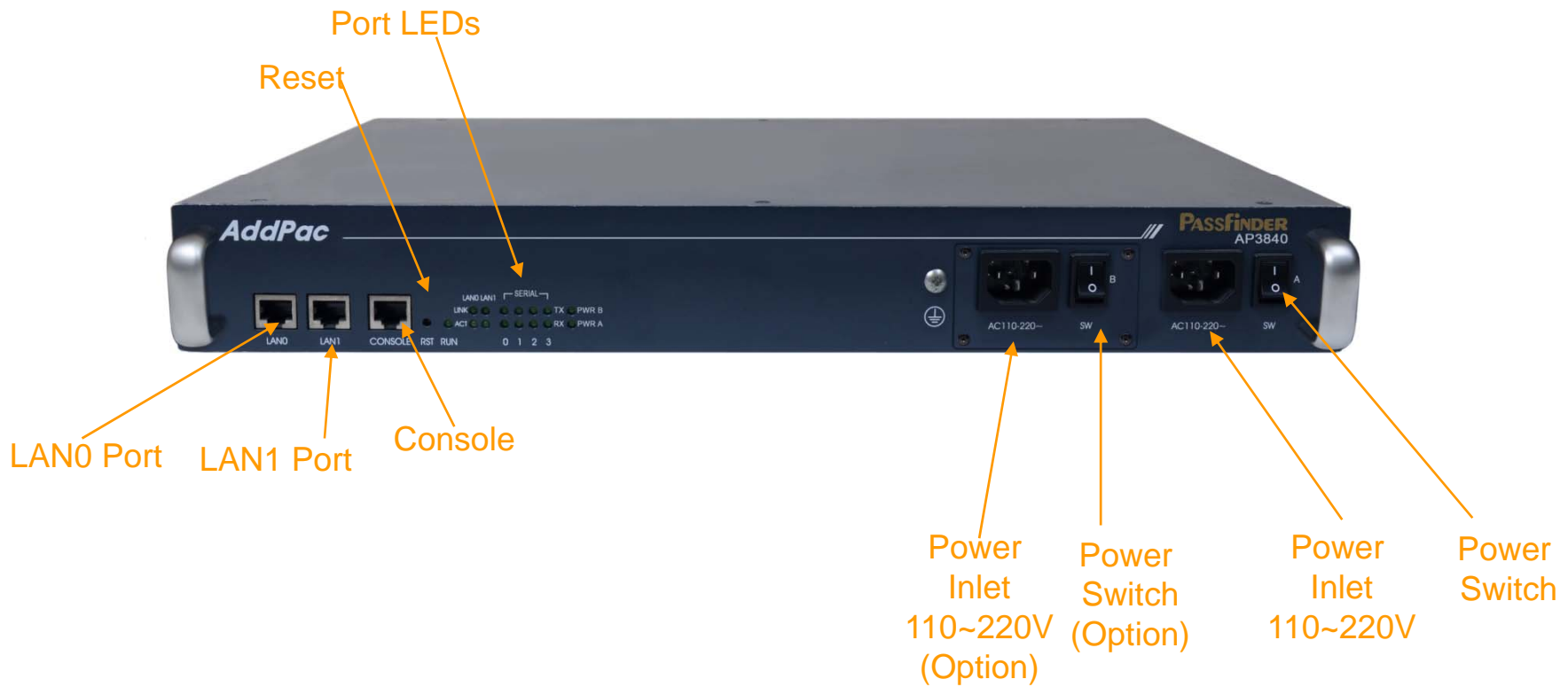
AddPac

www.addpac.com

Hardware Specification

AP3840N Gigabit Ethernet V.35 Leased-Line Router

Front Side



Hardware Specification

AP3840N Gigabit Ethernet V.35 Leased-Line Router

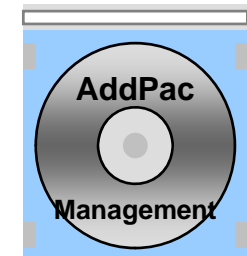
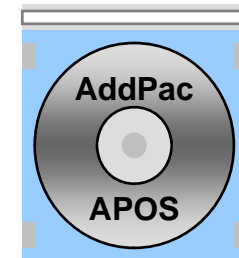


V.35 Port for WAN

Software Service

AP3840N Gigabit Ethernet V.35 Leased-Line Router

- Built-in AddPac APOS Internetworking Software
 - LAN to V.35 Routing Features
 - WAN Interface Features
- Firmware Upgradeable Architecture
- Industry Standard Network Protocol Features
- Highly User Friendly Management Features
 - Smart Web Manager



Network Service and Features (Cont..)

AP3840N Gigabit Ethernet V.35 Leased-Line Router

- Protocol Stack
 - IPv4/IPv6 Dual Stack
 - Over Traffic Control, Over Load Control
- Network Protocol
 - PPP/PPPOE
 - DHCP Client / Server / Relay
 - Frame Relay
 - Bridge
 - CDP (Cisco Discovery Protocol)
 - HTTP, SSH, Telnet
 - VLAN

Network Service and Features (Cont..)

AP3840N Gigabit Ethernet V.35 Leased-Line Router

- Protocol Stack
 - IP/UDP/TCP/ICMP/IGMP
 - PIM-SM Multicast
 - RIP/RIPng
 - BGP4
 - OSPF/OSPFv6
 - IPX (Optional)
 - VRRP, VRRPv6
 - NAT
 - NATPT
 - NTP
 - HTP (HTTP Time Protocol)
 - IP Access-List
 - RADIUS Authentication

Network Service and Features (Cont..)

AP3840N Gigabit Ethernet V.35 Leased-Line Router

- Tunneling
 - L2TP/PPTP
 - IPIP
 - IPv6 in IP
- Management
 - SNMP
 - RMON
 - HTTP
 - CLI (Cisco Style Command Line Interface)
 - FTP
 - TFTP
- QoS
 - QoS Control for LAN and WAN Interface
 - CoS (DSCP)

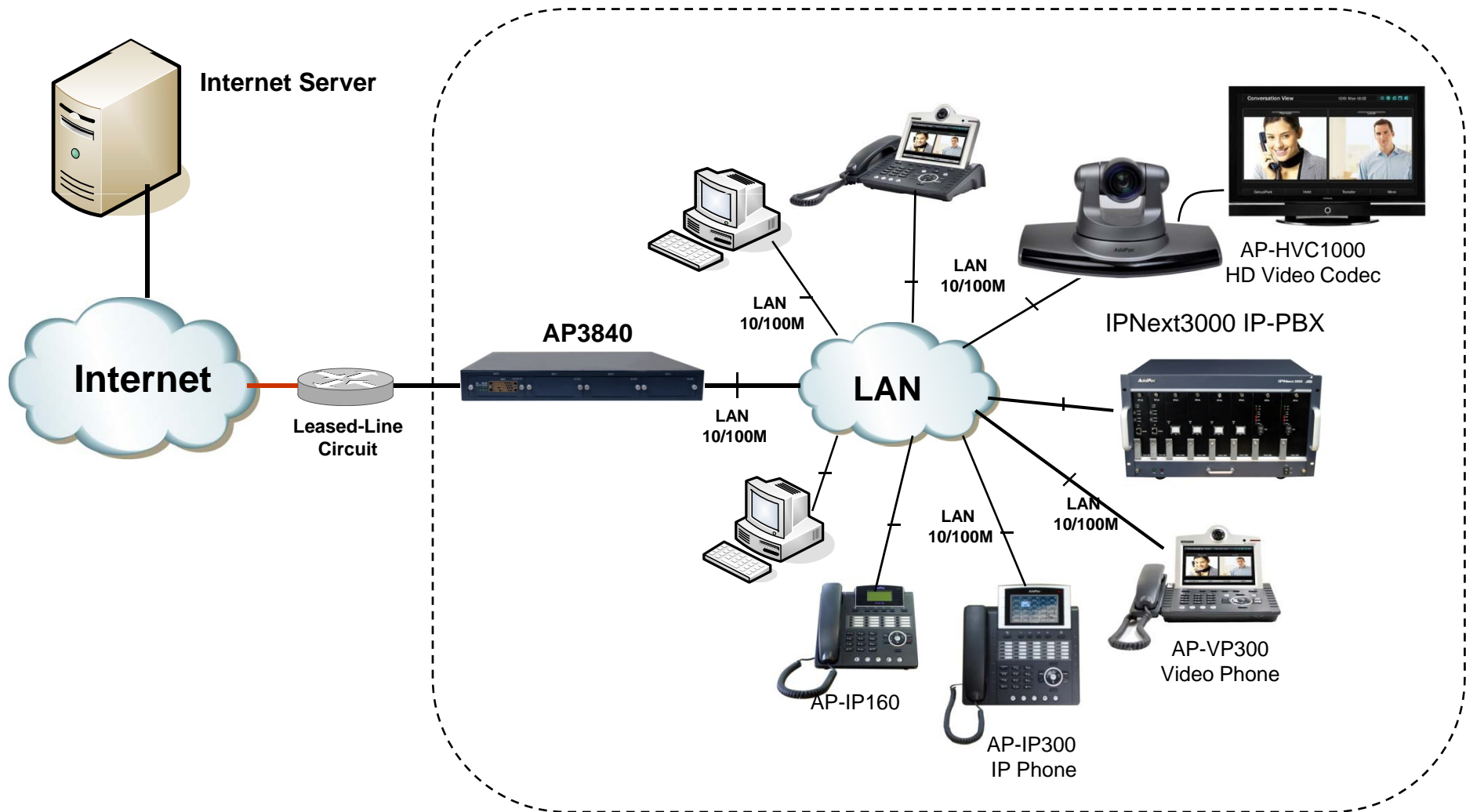
Network Service and Features (Cont..)

AP3840N Gigabit Ethernet V.35 Leased-Line Router

- Security Functions
 - Standard & Extended IP Access List
 - Enable/Disable for Specific Network Protocols
 - Multi-level User Account Management
 - Auto-disconnect for Telnet/Console Sessions
 - PPP User Authentication Supports (PAP & CHAP)
- Operation & Managements
 - System Performance Analysis for Process, CPU, Connection Interface
 - Debugging, System Auditing, and Diagnostics Support
 - System Booting and Auto-rebooting with Watchdog Feature
 - System Managements with Data Logging
 - IP Traffic Statistics with Accounting

Application Diagram

AP3840N Gigabit Ethernet V.35 Leased-Line Router



Ordering Information

- AP3840N Gigabit Ethernet V.35 Leased Line Router
 - AP3840N Main Body
 - High-performance RISC CPU
 - Four(4) Module Slots for V.35 Access, etc
 - Two(2) 10/100/1000Mbps Gigabit Ethernet for LAN Access
 - 1-port RS-232C Console
 - Including Network Cable Set & Internal Power Supply, etc.
- Built-in APOS Internetworking Software for AP3840N
- Including 1 Year Hardware Warranty
- Product Documents
 - Install and Operation Guide (PDF)
- Pricing
 - AddPac Technology Regional Sales Manager
 - Authorized Sales and Marketing Representatives
 - Please Contact www.addpac.com



Thank you!

AddPac Technology Co., Ltd.
Sales and Marketing

Phone +82.2.568.3848 (KOREA)

FAX +82.2.568.3847 (KOREA)

E-mail:sales@addpac.com