

IP Telephony Solution for AIR Traffic Control Center



AddPac

AddPac Technology

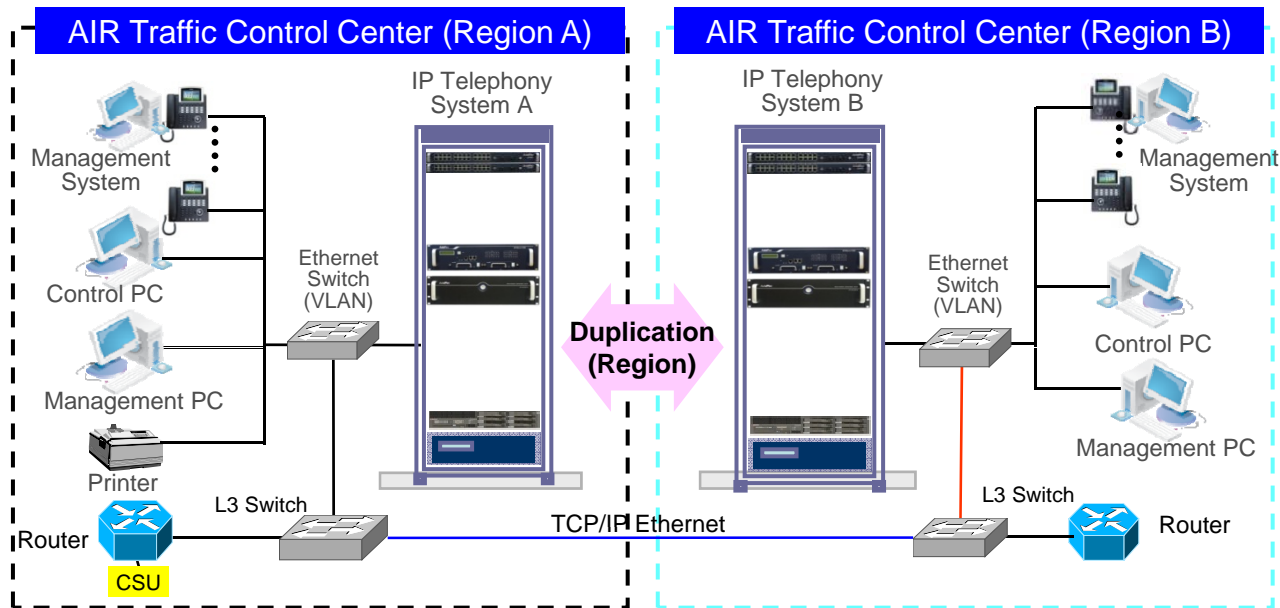
Sales and Marketing

www.addpac.com

Contents

- IP Telephony Network Diagram for AIR Traffic Control Center
- IP Telephony Solution Components (Example)
 - IPNext600 Call Manager
 - AP-NR1500 IP Voice Recording Server
 - AP-MC1500 Voice MCU
 - AP-IP300 IP Phone
 - AP-SAC Smart Attendant Console
 - AP-SNMS Smart IP Telephony NMS

IP Telephony Network Diagram





IP Telephony Solution Components

IPNext600 Call Manager



Product Overview

IPNext600 Next Generation IP-PBX System

- SIP Application Server, Proxy, Registrar and Location Server
- Multiple ITSP Trunk with SIP & H.323 Accounts Support
- Dual System Redundancy Architecture
 - Two(2) Fast Ethernet Interface / System
- High Performance RISC Architecture
- Powerful Network Protocols (PPPoE, DHCP, Static Routing, etc)
- IPv4/IPv6 Dual Stack
- RTP Proxy Function Embedded for Private IP and IPv6 Address Interworking
- User Presence Service Features for Smart Multimedia Messenger and Smart IP Phone
- IVR Scenario Editor, Voice Mail, Media Service (Coloring), Conference
- Firmware Upgradeable Architecture
- Smart Multimedia Manager for IP-PBX Management
- Smart Messenger Service (click to dial) for Unified Communication
- VPMS (VoIP Plug&Play Management System) & Smart NMS for Large Scale Deployment
- Advanced Voice QoS Mechanism
- Dual Redundancy Power Module

Hardware Specification

IPNext600 Next Generation IP-PBX System

A square logo with a dark blue background and a light blue border. The text "RISC" is positioned above "CPU" in white, sans-serif font.

RISC
CPU

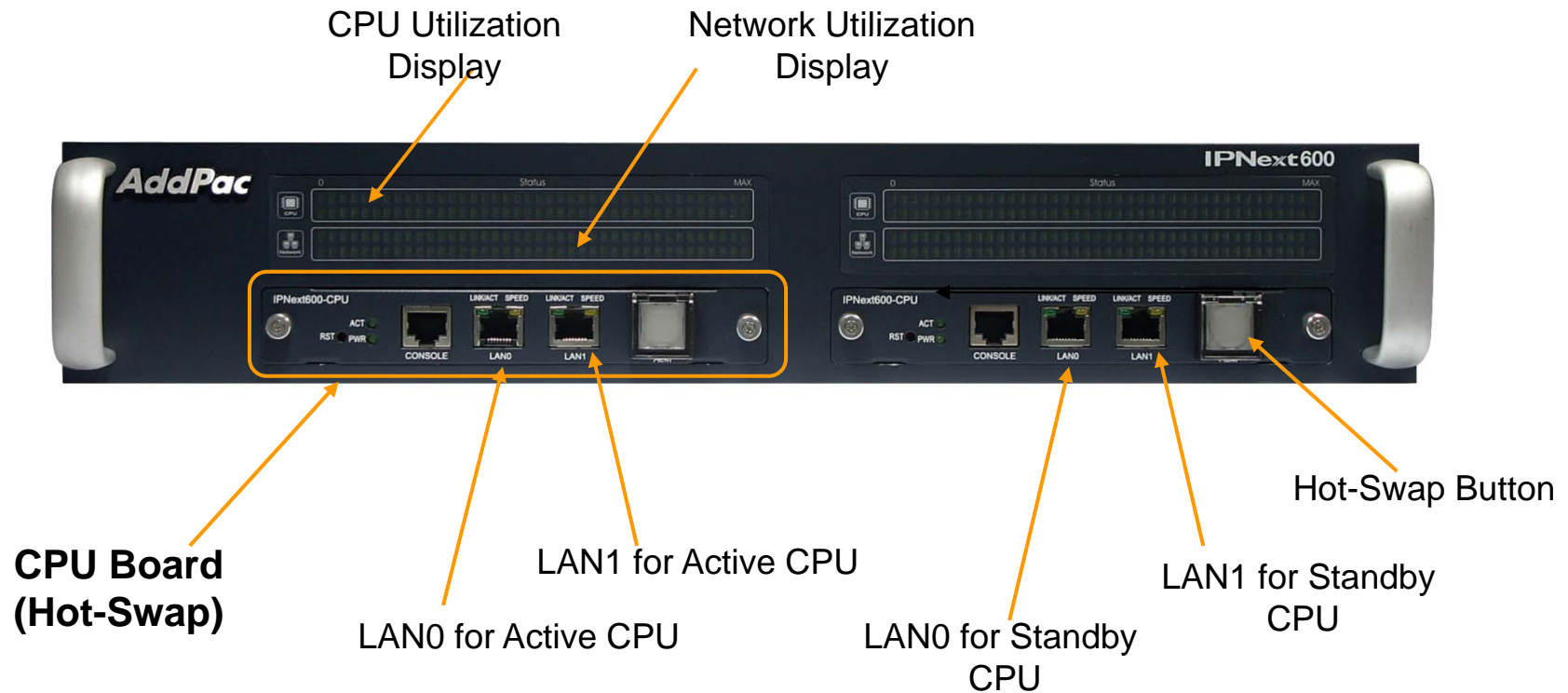
- High-End Microprocessor Computing Power
- Main Chassis
 - Dual Redundancy CPU Boards for System Fault Tolerant
 - Two(2) 10/100Mbps Gigabit Ethernet
 - One(1) RS-232C Console (RJ45)
 - Dual Redundancy Power Supply Module
 - Hot-Swap Features

Hardware Specification

IPNext600 Next Generation IP-PBX System

RISC
CPU

IPNext 600 Front Side



Hardware Specification

IPNext600 Next Generation IP-PBX System



IPNext 600 Back Side

Dual Power Supply Modules
(Hot-Swap)



PSU Module A

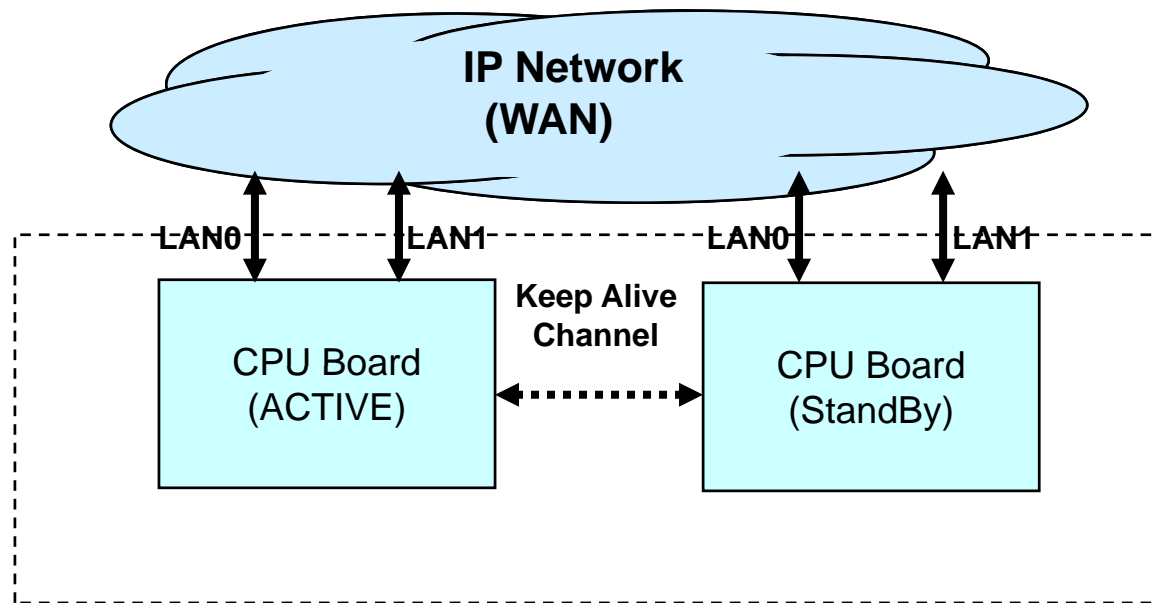
PSU Module B

Power On/Off Switch
for System

System Redundancy Features

IPNext600 Next Generation IP-PBX System

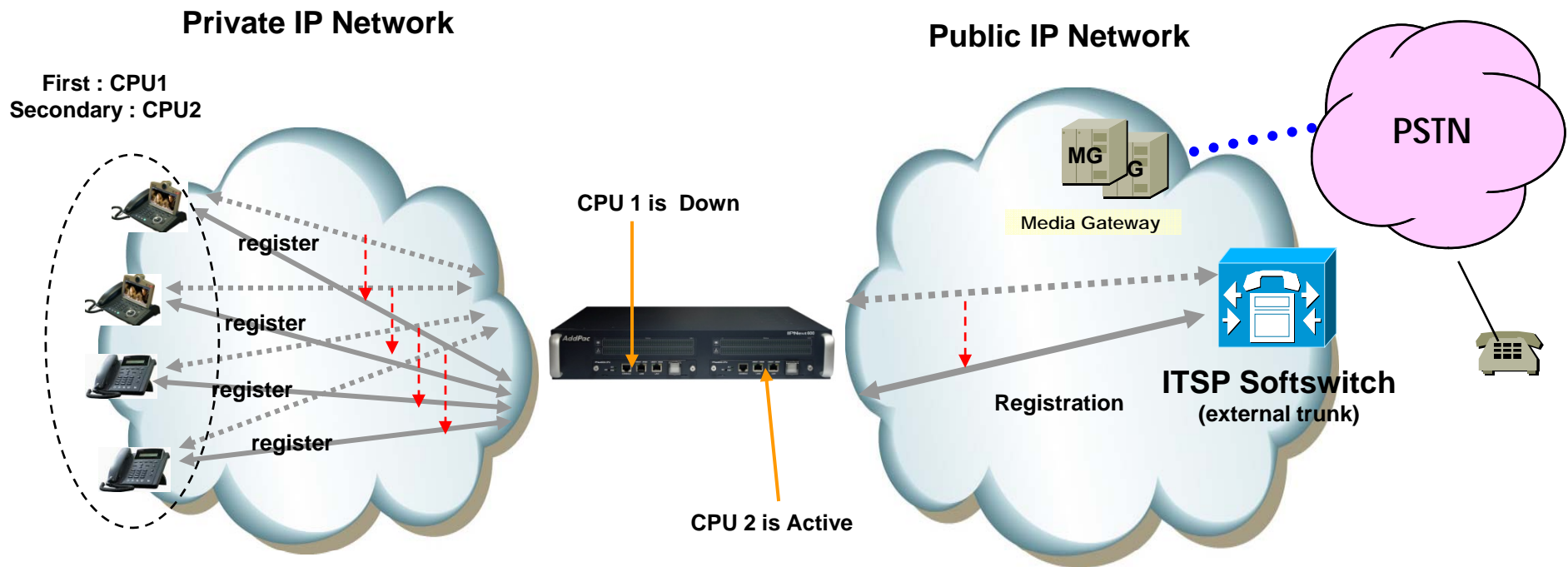
IPNext600 System Block Diagram



System Redundancy Features

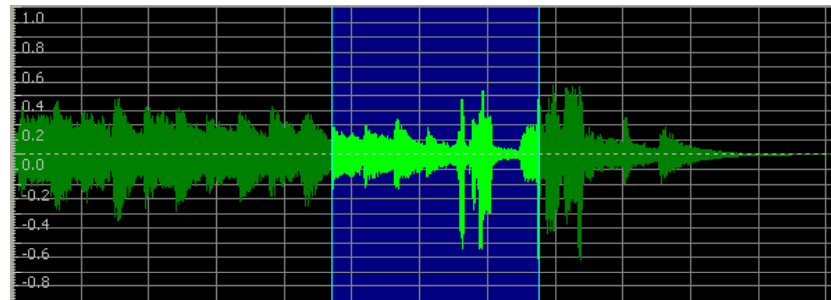
IPNext600 Next Generation IP-PBX System

- Active– Active Duplication Scheme
- Active – Standby Duplication Scheme
- VRRP based Duplication Scheme



Active – Standby Duplication Scheme (example)

AP-NR1500 IP Voice Recording Server



Product Overview

AP-NR1500 IP Voice Call Recording Server

- IP based Network Voice Call Recording Server
- Linux Operating System
- Powerful Management and User Friendly Features
- High-performance Voice Recording Service
- External AddPac IP Terminal (Ex: IP Phone, IP Intercom, IP Emergency Phone) Interworking Support
- Firmware Upgradeable Architecture
- One(1) 10/100/1000Mbps Gigabit Ethernet Interface
- Up to Two(2) 3.5Inch SATA Hard Disk Interface Support
- Two(2) USB Interface Support
- One(1) RS232C Console Interface

Hardware Specification

AP-N1500 IP Voice Call Recording Server

- High Performance Computing Power
- Network Interface
 - One(1) 10/100/1000Mbps Gigabit Ethernet Port
- Two(2) USB 2.0 Interfaces for Mouse, Secondary Storage, etc
- One(1) RS232C Console Interface (RJ45)
- Up Two(2) SATA type Hard Disk (4~8 Tera HDD Capacity)
- Power On/Off Soft Switch with LED Indication Lamp (Front Side)

Hardware Specification

AP-NR1500 IP Voice Call Recording Server

AP-NR1500 Front Side

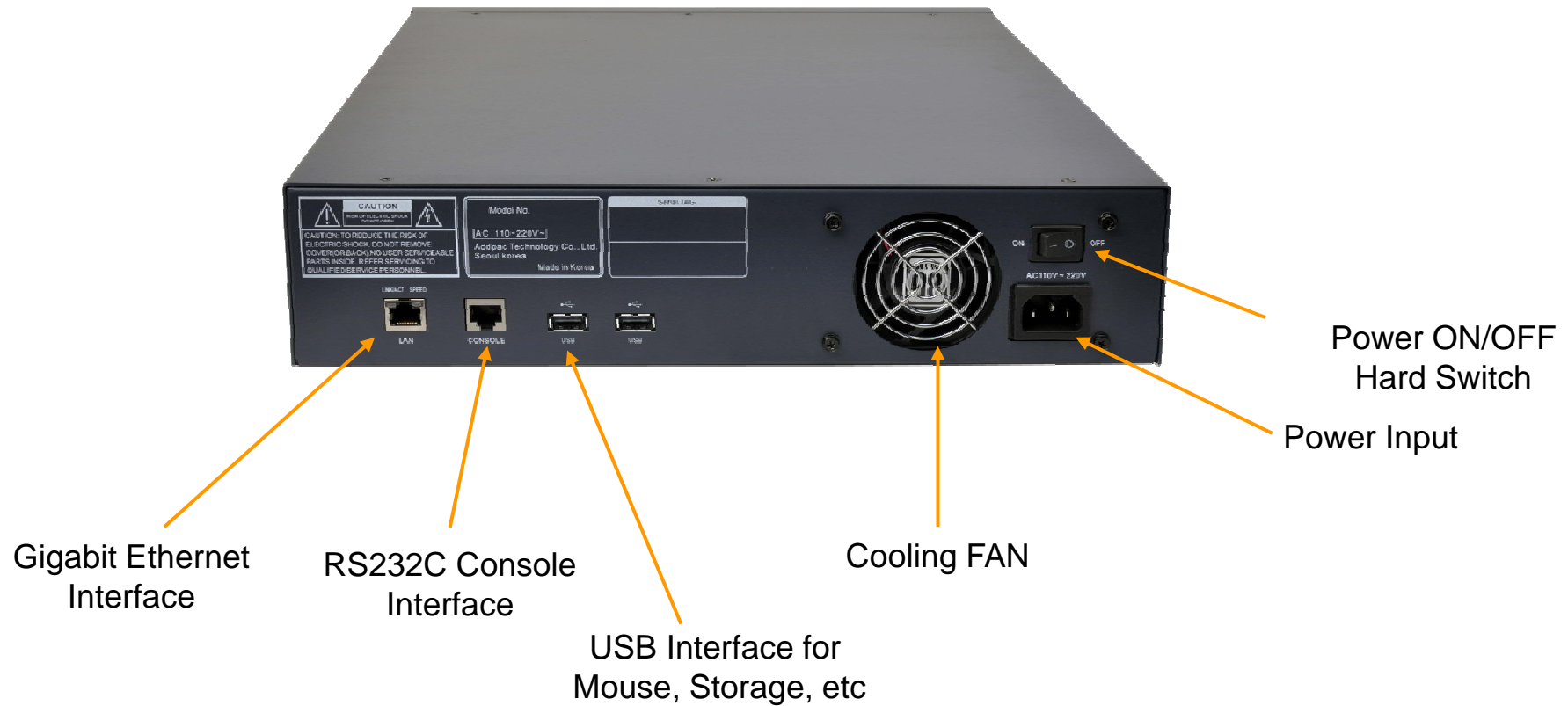


Power On/Off Switch with LED Indication LAMP

Hardware Specification

AP-NR1500 IP Voice Call Recording Server

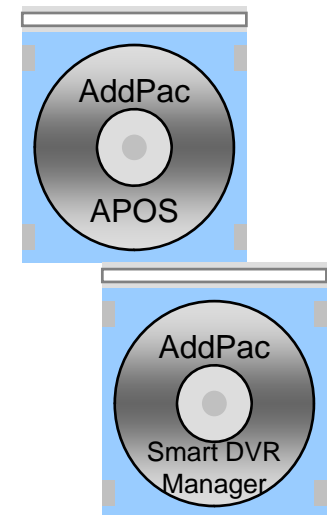
AP-NR1500 Back Side



Software Service

AP-NR1500 IP Voice Call Recording Server

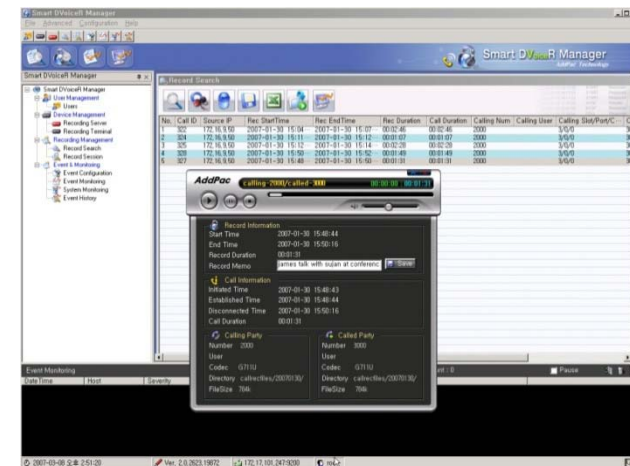
- Built-in AddPac Internetworking Software
 - Scalability, Functionality, and Stability Features
 - Advanced Network DV_{oice}R Recording & Live Streaming Features
 - QoS Control Features
- Firmware Upgradeable Architecture
- Industry Standard Network Protocol Features
- Highly User Friendly Management Features
 - PC based Window Program
 - Smart DV_{oice}R Manager



Smart DVoiceR Management Program

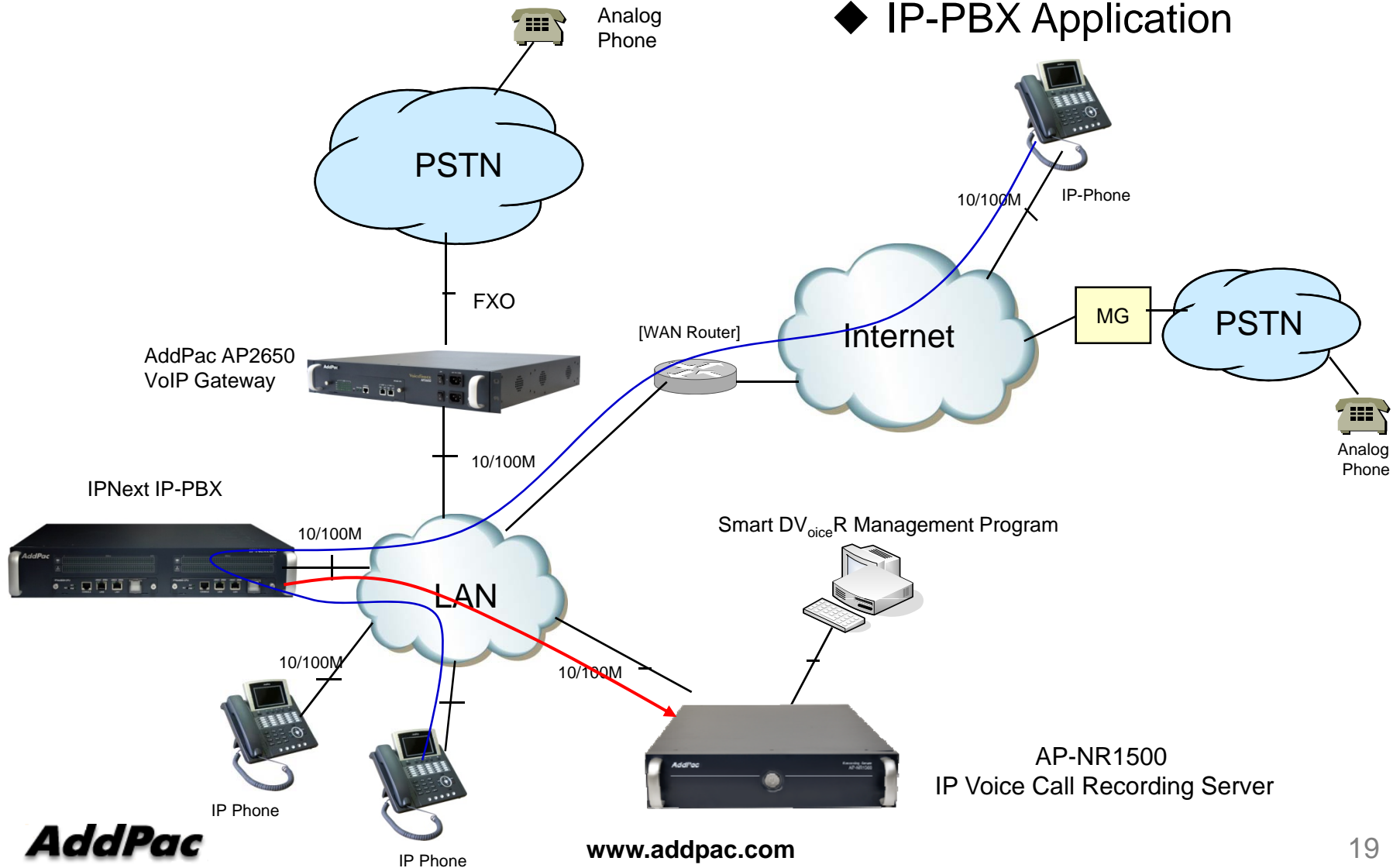
AP-NR1500 IP Voice Call Recording Server

- Call History Management (search/modify/delete/save)
- Media Play Management (Play/Stop/Seek/Pause)
- Live Call List Management, Live Call Monitoring
- Local Backup (File Manager Support, PC HDD, DVD) and Local Play
- User Management (registration/modify/delete/search)
- Server Status (CPU/Memory/HDD) & Event Monitoring
- Waveform Analyzing Function
- Recording Source Management (VoIP Gateway, IP Phone, etc)
- Live Recording Board



Voice Recording App. for All IP Environment

◆ IP-PBX Application





AP-MC1500 Audio MCU

Main Features

AP-MC1500 Voice MCU

- IP based Hardware Audio Mixing Solution
- Two(2) DSP Module Slots for Audio Mixing
- 64Ch, 128ch Audio Mixing DSP Modules
- Compact PCI Style Hot-Swap Support
- Support Various Conference System Model
- Scalability and Flexibility
- High-performance Voice Mixing Service
- SIP and H.323 VoIP Signaling Support
- Various Voice Codec Support (G.711,G.729, G.723, etc)
- Two(2) 10/100Mbps Fast Ethernet Interface
- Firmware Upgradeable Architecture
- Audio Solution with Outstanding Network Service Capability

Hardware Specification

AP-MC1500 Audio MCU

PowerPC
CPU

High-end
DSP

- High Performance RISC Microprocessor Computing Power
- Built-in High-end Programmable DSP Hardware Architecture
- Main Chassis
 - Network Interface
 - Two(2) 10/100Mbps Fast Ethernet
 - One(1) RS-232C Console (RJ45)



Hardware Specification

AP-MC1500 Audio MCU

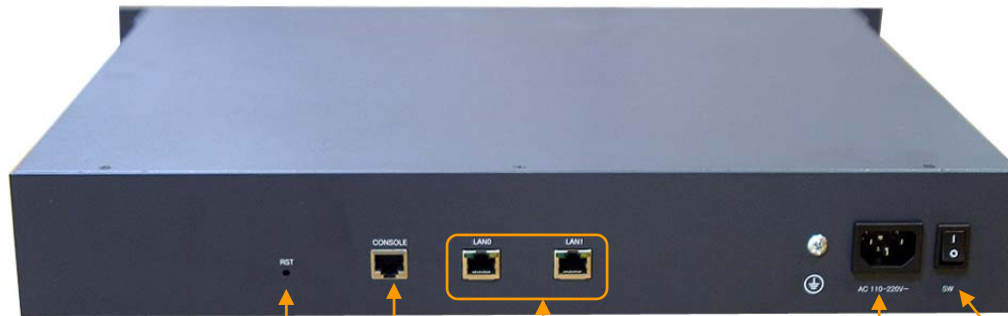
PowerPC
CPU

High-end
DSP



DSP Module

Hot-Swap Ejector



Reset

Console Port

Two(2)
LAN Port

Power Inlet

Power Switch

Hardware Specification

AP-MC1500 Audio MCU

PowerPC
CPU

High-end
DSP

- MCU Module (HIM-AMCU128)
 - High quality Audio Mixing
 - 128Channel Audio Mixing
 - Compact PCI Style Hot-Swap Function
 - High-End Programmable DSPs
 - Parallel DSP Processing for High Quality Audio Mixing
 - Concurrent Different Audio Codec Support
- MCU Module (HIM-AMCU64)
 - High quality Audio Mixing
 - 64 Channel Audio Mixing
 - Compact PCI Style Hot-Swap Function
 - High-End Programmable DSPs
 - Parallel DSP Processing for High Quality Audio Mixing
 - Concurrent Different Audio Codec Support
 - Cascade Support

AP-IP300 IP Phone



Main Features

AP-IP300 IP Phone

- 4.3 Inch Color LCD Display
- External I/O Interface
 - Audio In/Out
 - Two(2) Fast Ethernet Interface
 - PSTN FXO Interface (optional)
- PoE (Power over Ethernet) Support
- 25 Speed Dial button with Presence Indication Lamp
- Audio Broadcasting Controller & Terminal
- Providing Powerful Push-to-Talk Service
- Powerful Color GUI
- IPv4/IPv6 Address Support
- SIP, H.323 Signaling Support
- High-end Error Resilient Against Various Packet Error

Hardware Specification

AP-IP300 IP Phone

- RISC+DSP Microprocessor Computing Power (Dual Processor Architecture)
- High Quality 4.3 Inch Color LCD Panel
- 25 Speed Dial Key & User Presence Indication LED
- Optional PSTN Backup Interface
 - FXO Interface
- High quality Audio and Voice Interface
 - Stereo Audio Input Connector
 - Stereo Audio Output Connector
- Network Interface
 - Two(2) 10/100Mbps Fast Ethernet
- USB Host Mode Interface
 - USB Memory(Flash, HDD), etc
- Power Supply
 - Power over Ethernet
 - External Power Adaptor (5V, 3A)



Hardware Specification

AP-IP300 IP Phone



IP Extend Key Pack Comparison Table

Model	AP-PT100	AP-PT50	AP-PT20
Service Features			
Key Type	7 inch LCD Touch Screen	Push Button with User Presence Indication LAMP	Push Button with User Presence Indication LAMP
Key Number	Default : 9(row) x 4(column) = 36	60 Key	40 Key
User Presence Indication	Support	LED on, LED off, LED Blink	LED on, LED off, LED Blink
Multiple Cascading	Support	Support	Support
Speaker	Support	Support	Support
LAN Port	2	2	2
PoE(Optional)	Support	Support	Support
Application	IP Phone or Video Phone Extend Key Pack	IP Phone or Video Phone Extend Key Pack	IP Phone or Video Phone Extend Key Pack

Main Features

AP-PT50 IP Extend Key Pack

- Speed Dialing Terminal with User Presence Indication LAMP
- 60 (3 Column x 20 Row) Speed-Dial Key Buttons
- Inter-working with IP Terminal, Presence Server, Call Manager
- Multiple Terminal Cascading Feature
- User Presence Indication LED (on, off, blink)
- User Presence Group Feature
- Firmware Upgradeable Architecture
- PoE (Power over Ethernet) Function

Hardware Specification

AP-PT50 IP Extend Key Pack

RISC
CPU

- RISC+DSP Microprocessor Computing Power
- 60 Speed Dial Key with User Presence LAMP
- Optional PoE (Power over Ethernet) Interface
- Network Interface
 - Two(2) 10/100Mbps Fast Ethernet
- Power Supply
 - Power over Ethernet (Option)
 - External Power Adaptor (5V, 2A)
 - Power Switch
- Connector for Cascading

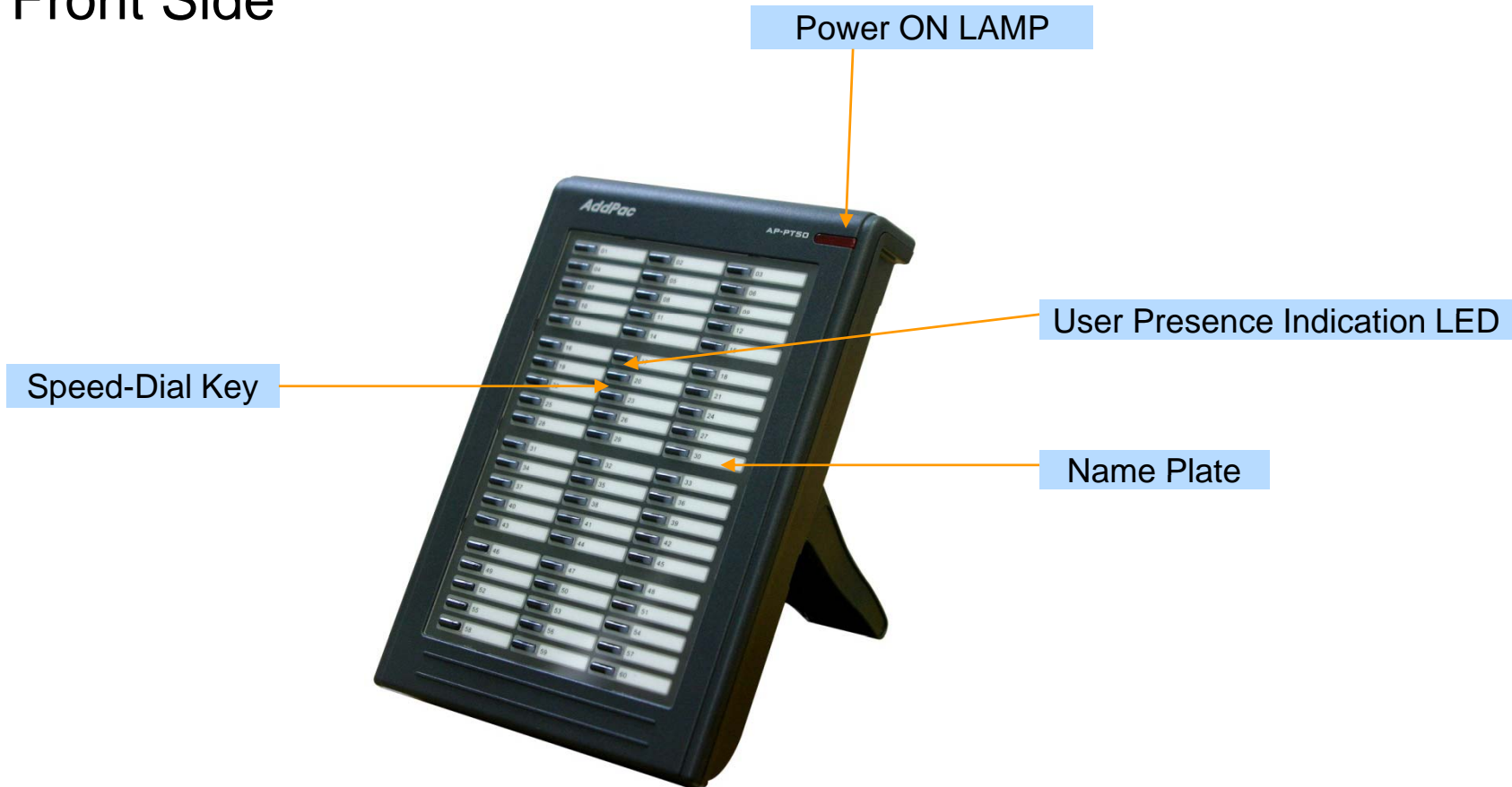


Hardware Specification

AP-PT50 IP Extend Key Pack

RISC
CPU

Front Side

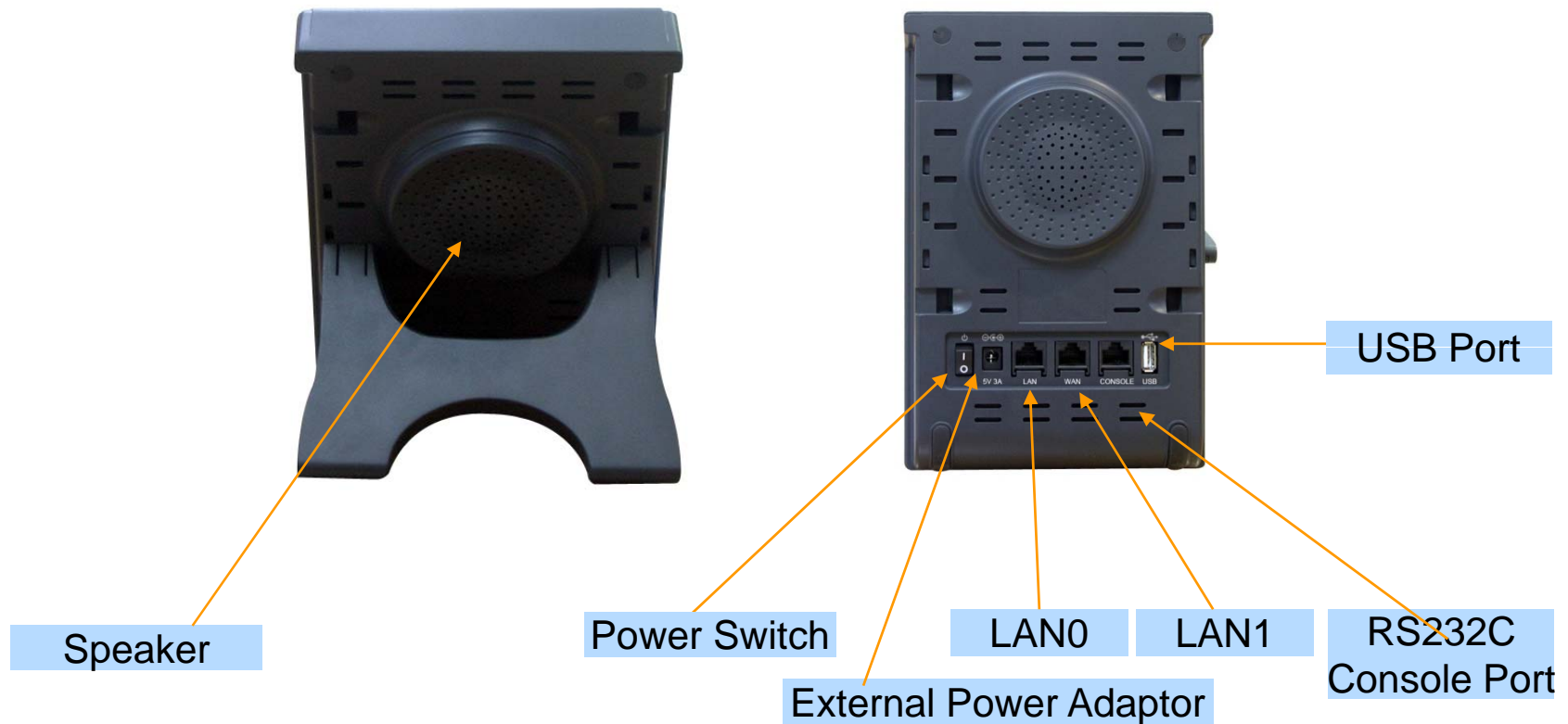



Hardware Specification

AP-PT50 IP Extend Key Pack

RISC
CPU

Back Side





AP-SAC Smart Attendant Console (Touch Screen Version)

Contents

- Overview
- Touch Screen based Attendant Console System Diagram
- Touch Screen based Attendant Console Feature
- Touch Screen based Attendant Console UI
 - Login Feature
 - Main Screen Feature

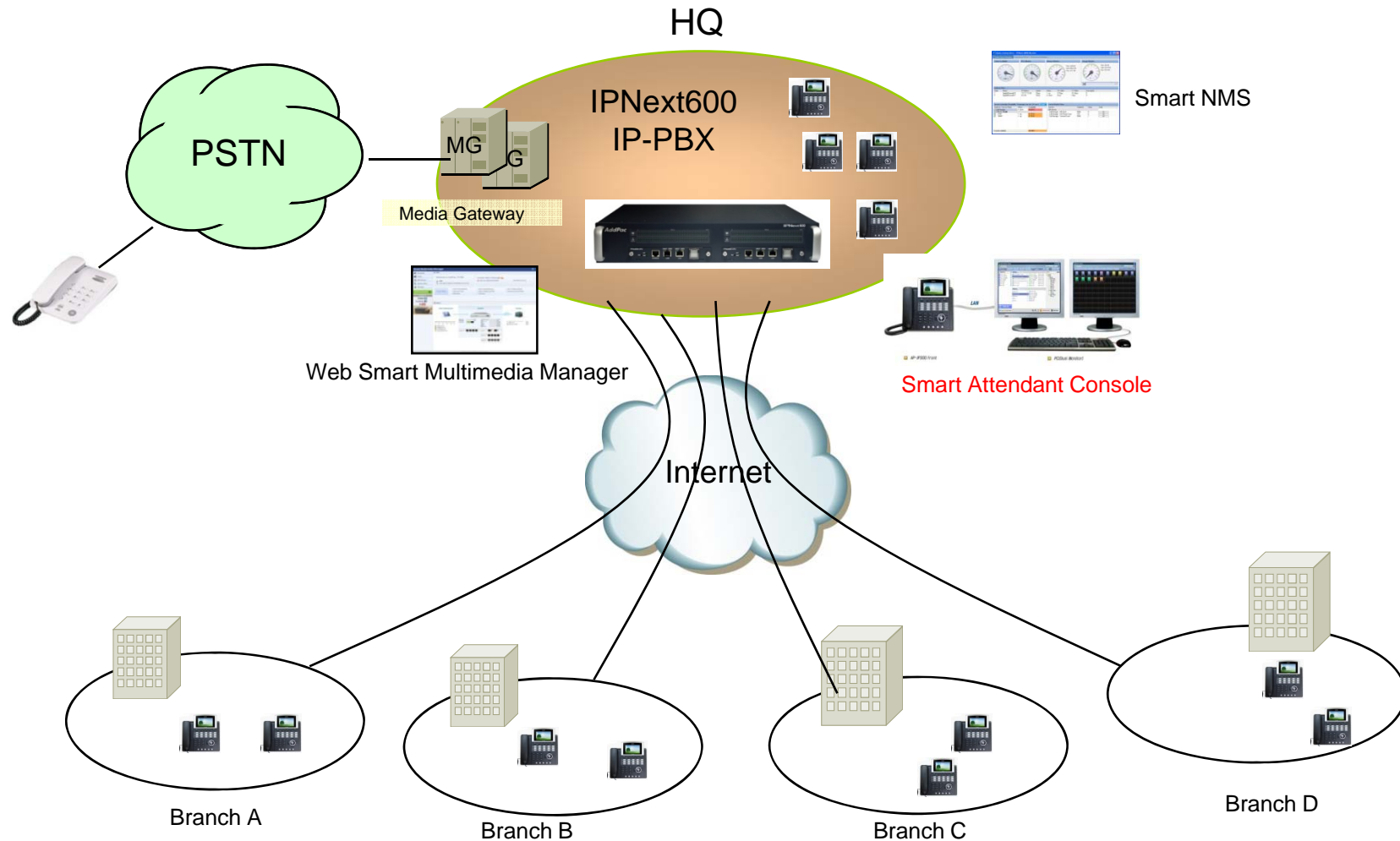


Overview

Support Efficiently Call Routing and Smart Presence Service

- Touch Screen based Attendant Console Function
 - Support Call Routing Service
 - Support User Presence Information
 - Support Phone Number Presence Information
 - Support Attendant Phone Call Control
 - Support Call Status Display
 - Support Group Call(Conference)
 - Support Various Monitoring Group

Touch Screen based Attendant Console System Diagram



Touch Screen based Attendant Console Feature

- User Login Service
 - User Login and Logout Feature
- Monitoring and Group Management Service
 - Support Various Group
 - Attendant and Direct Phone Group
 - Office Phone Group
 - Conference Call Group
 - Support Group Management Feature
 - Add Group, Rename Group, Delete Group
 - Add User, Delete User
 - Add Conference Room, Delete Conference Room

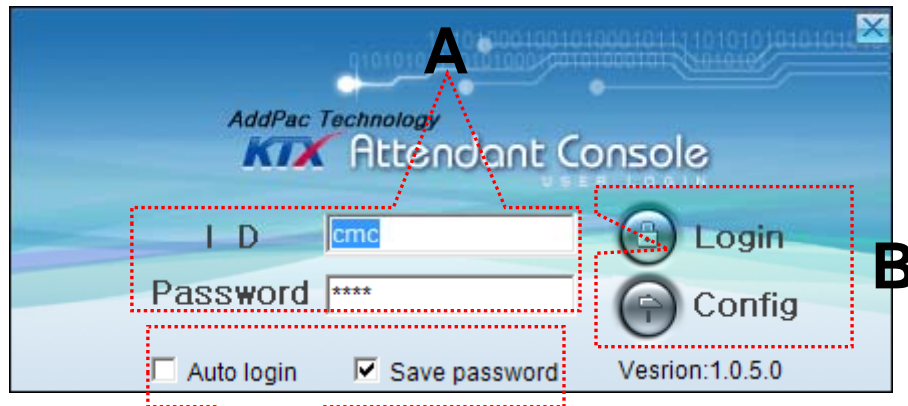
Touch Screen based Attendant Console Feature

- Monitoring and Group Management Service
 - Presence Feature
 - Phone Presence Status
 - Online, Working, Away, Absence
 - Be In Conference, Call Busy
 - User Presence Status
 - PC Online, Phone Online, PC-Phone Online
 - Working, Away, Absence
 - Be In Conference, Call Busy
 - Display Call Status
 - Display Call Status Icon for Talking Time
 - Call Control Feature
 - Interoperate with Monitoring Phone Information
 - Manual Call Dial
 - Drag and Drop Call Transfer and Manual Call Transfer

Touch Screen based Attendant Console Feature

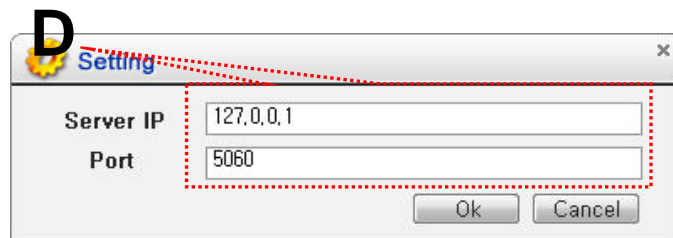
- Attendant Phone Call Control Service
 - Display Phone Call Status
 - Display Call Status Icon for Call Stat
 - Display Talking Call Status Icon for Talking Time
 - Support Multi-Call
 - Phone Call Control Feature
 - Dial to Monitoring Phone and Conference
 - Incoming Call Answer
 - Active Call Hold and UnHold
 - Call Transfer
 - Call Disconnect
 - Interoperate with Monitoring Phone Information
 - Drag and Drop Call Transfer and Manual Call Transfer

Touch Screen based Attendant Console User Login



[Figure 1]

C



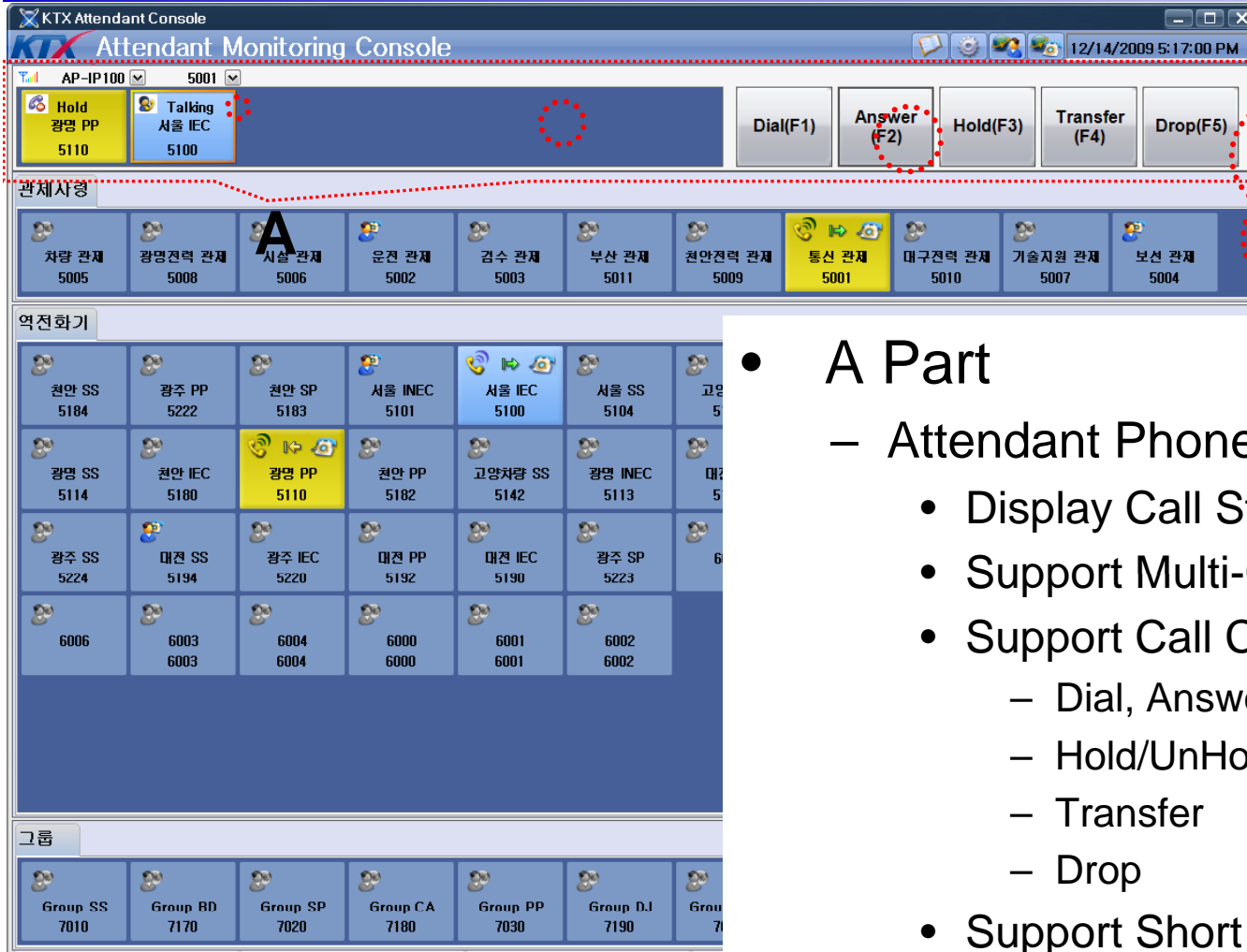
[Figure 2]



[Figure 3]

- Attendant Console Login
 - [Figure 1] shows the login picture of KTX Attendant Console program. “E” of [Figure3] is Icon of KTX Attendant Console Program.
 - When program is started initially, user should set the network configuration parameter such as IP address, Port number of Presence Server.[Figure2]
 - After inputting ID and Password, press the login button

Touch Screen based Attendant Console Main Screen –Call Control



- A Part
 - Attendant Phone Call Control Part
 - Display Call Status
 - Support Multi-Call Display
 - Support Call Control Feature
 - Dial, Answer
 - Hold/UnHold
 - Transfer
 - Drop
 - Support Short Key Call Control

Touch Screen based Attendant Console Main Screen –Monitoring



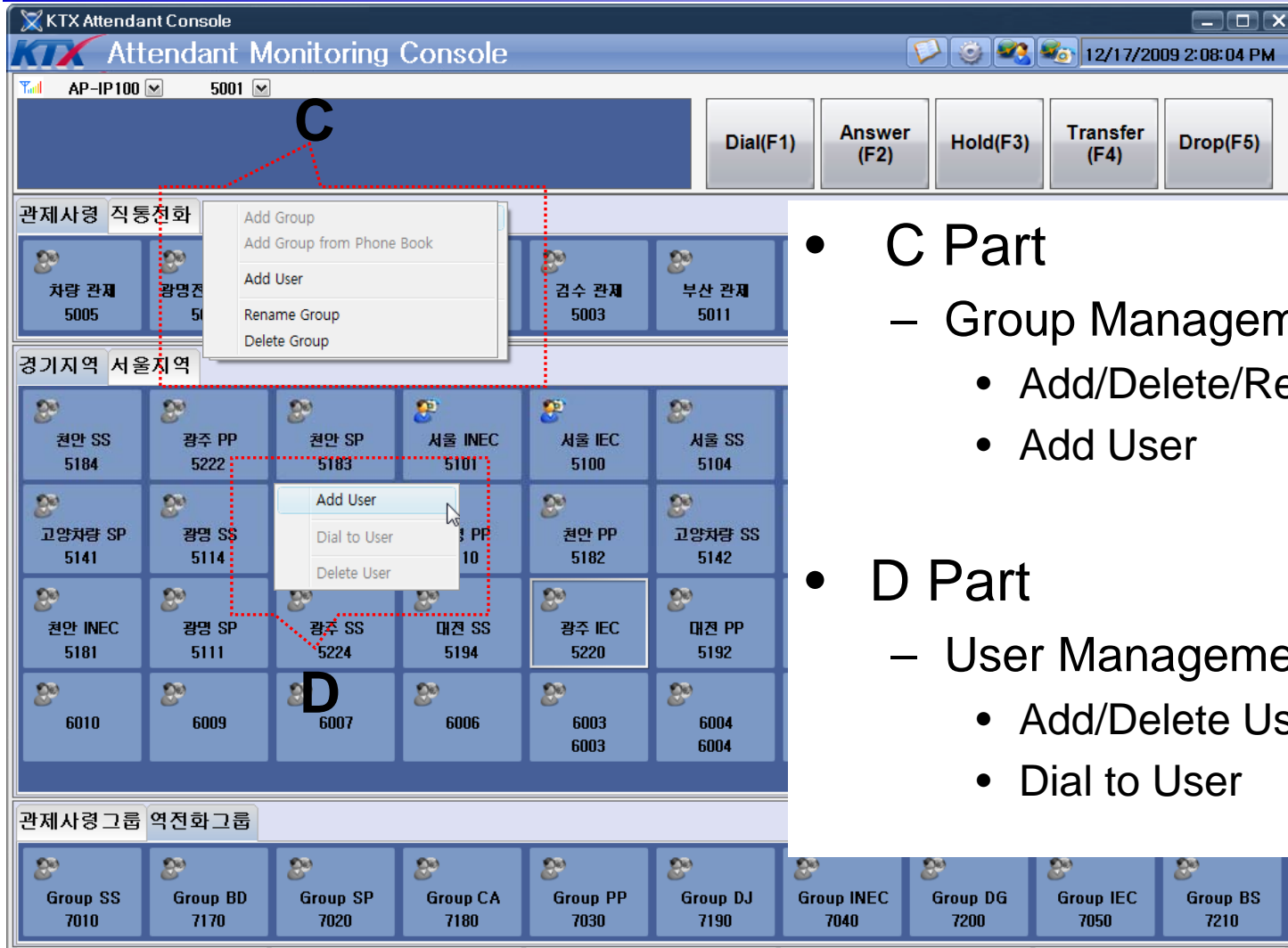
• B Part

– Monitoring Group Part

- Support Various Group
 - Attendant and Direct Phone Group
 - Office Phone Group
- Support Group Management Feature
 - Add Group, Rename Group, Delete Group
 - Add User, Delete User
- Provide Various User Presence Status
 - » PC Online, PC-Phone Online, Phone Online
 - » Offline, Away, Absence
 - » Be in Conference, Call Busy
- Display Call Status

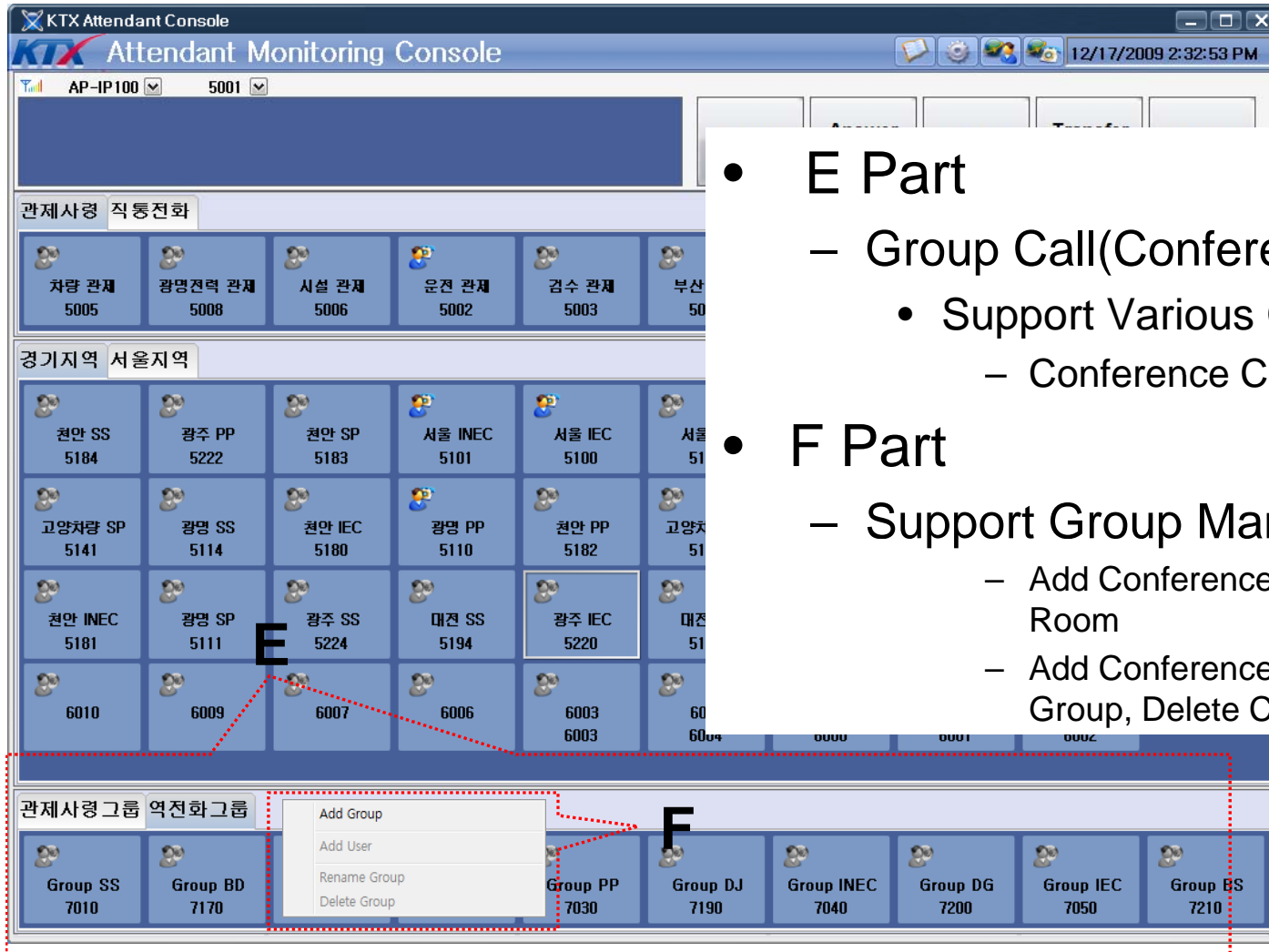


Touch Screen based Attendant Console Main Screen –Monitoring Group



- C Part
 - Group Management Feature
 - Add/Delete/Rename Group
 - Add User
- D Part
 - User Management Feature
 - Add/Delete User
 - Dial to User

Touch Screen based Attendant Console Main Screen – Group Call



- E Part
 - Group Call(Conference) Part
 - Support Various Group
 - Conference Call Group
- F Part
 - Support Group Management Feature
 - Add Conference Room, Delete Conference Room
 - Add Conference Group, Rename Conference Group, Delete Conference Group



Smart NMS

Smart Network Management System

Main Features

- Web-based Management
- Network Resource Management
- Device Fault Management
- Device Fault History Management
- Device Status Information
- Notification Management
- Fault Statistics
- Model & Service Management





Thank you!

AddPac Technology Co., Ltd.
Sales and Marketing

Phone +82.2.568.3848 (KOREA)

FAX +82.2.568.3847 (KOREA)

E-mail sales@addpac.com