

# SIP Paging Terminal Solution



***AddPac***

**AddPac Technology**

Sales and Marketing

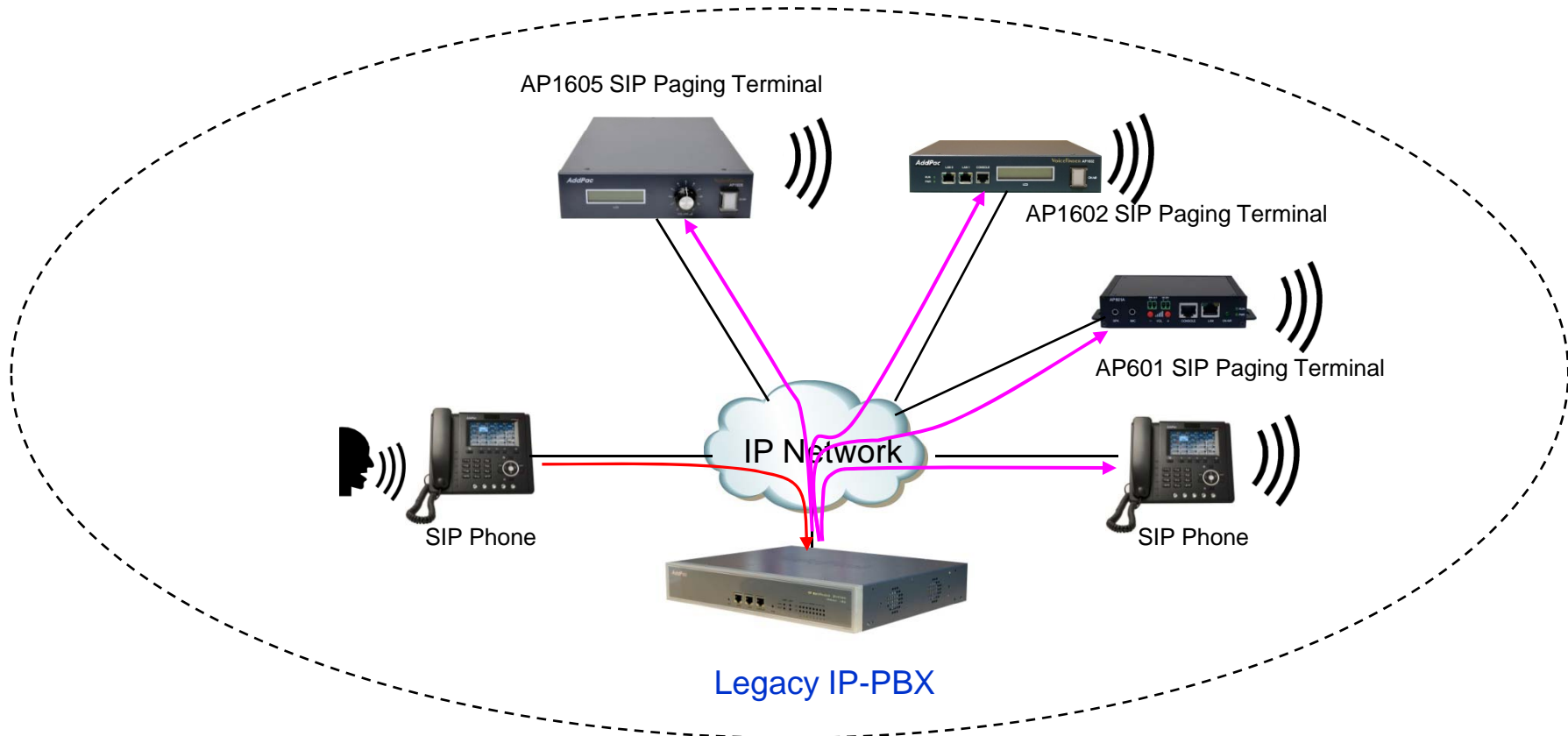
[www.addpac.com](http://www.addpac.com)

# Contents

- SIP Paging Call Service Diagram
  - Legacy IP-PBX Service Mode (Simple Service)
  - IP-PBX Clone Service Mode (Advanced Service)
- SIP Paging Product Solution
- SIP Paging Call Source, Destination, and Scenario
- Product Specifications
  - SIP Paging Server : AP-SPS10000, AP-SPS2000, AP-SPS600
  - SIP Paging Terminals: AP601, AP1602, AP1605
  - SIP Phones for Paging Service : AP-IP300, AP-IP120
  - SIP Paging Management Software : AP-SPMS

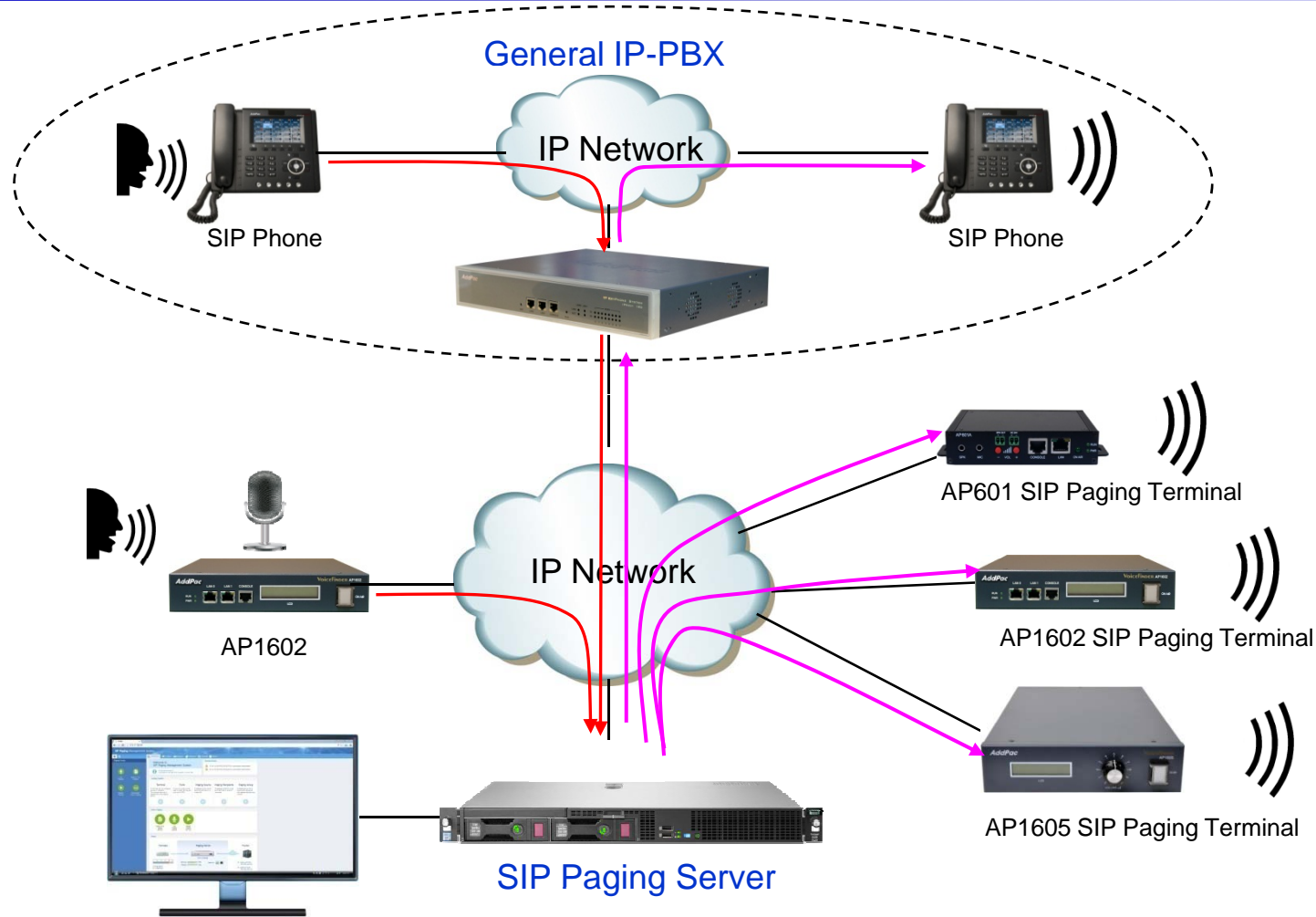
# SIP Paging Call Service Network Diagram

- Legacy IP-PBX Service Mode (Simple Service)



# SIP Paging Call Service Network Diagram

## - IP-PBX Clone Service Mode (Advanced Service)



AP-SPMS : SIP Paging Management Software

# SIP Paging Product Solution

SIP Paging Management S/W	SIP Paging Servers	SIP Paging Terminals	SIP Phone for Paging Service
 AP-SPMS	 AP-SPS10000	 AP601	 AP-IP300 + AP-PT20x2
	 AP-SPS2000	 AP1602	 AP-IP120 + AP-PT20x2
	 AP-SPS600	 AP1605	



# SIP Paging Terminals

# AP601

## SIP Paging Terminal



# Product Overview

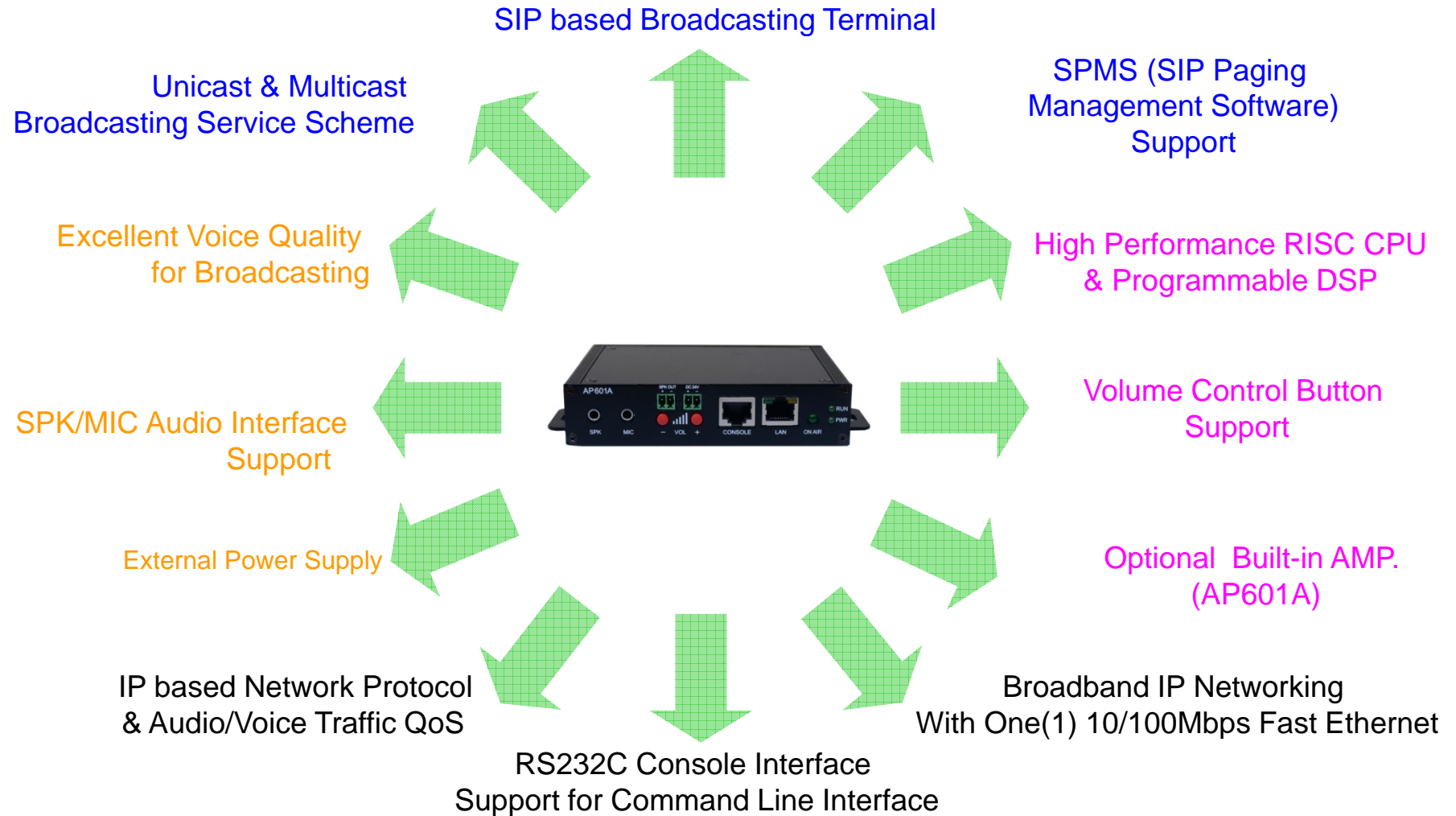
## AP601 SIP Paging Terminal

- SIP based Voice Broadcasting Terminal Solution
- Hardware Architecture for Voice Broadcasting Terminal Service
- Remote Broadcasting Service at terminal side
- High Quality Voice Codec Support (High Quality Codec, G.711, G.726, etc)
- RTP/UDP Protocol Support
- Unicast and Multicast Broadcasting Scheme
- SPMS (SIP Paging Management Software) Support
- One(1) channel SPK/MIC Port
- Volume Control Button Support (Up, Down)
- Option (AP601A) : AMP. Built-in
- High-Quality Audio/Voice Service
- Firmware Upgradeable Architecture
- Broadcasting Solution with Outstanding Network Service Capability
- External Power Supply



# Product Highlights

## AP601 SIP Paging Terminal



# Hardware Specification

AP601 SIP Paging Terminal



RISC  
CPU

High-end  
DSP

- RISC Microprocessor Computing Power
- High-end Programmable DSP Hardware Architecture
- High Quality Audio Encoding/Decoding Service
- One(1) 10/100Mbps Fast Ethernet (RJ45)
- One(1) RS-232C Interface (RJ45)
- SPK/MIC Audio Interface Support
- Volume Control Button Support (Up, Down)
- External Power Supply Support
- Option : 30Watt Digital AMP. Built-in (AP601A)

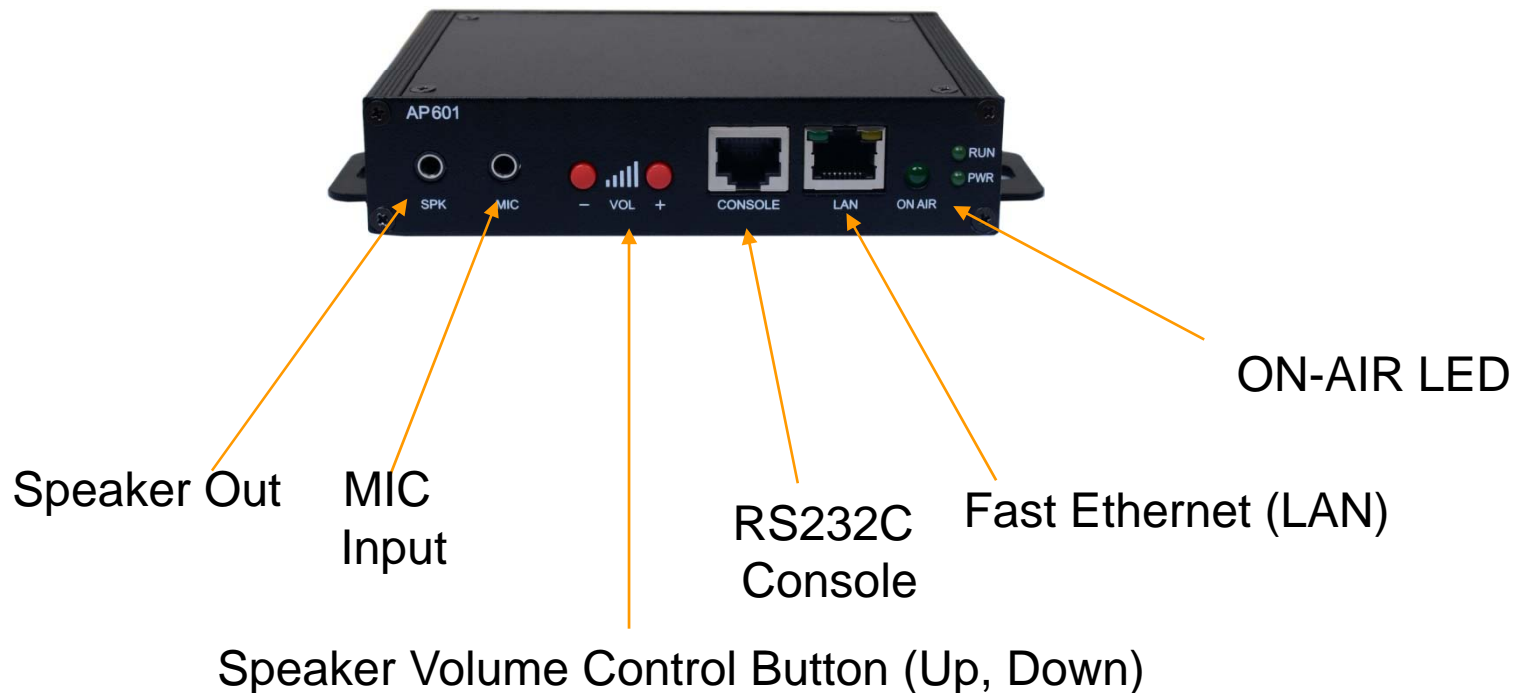
# Hardware Specification

AP601 SIP Paging Terminal

RISC  
CPU

High-end  
DSP

## Front Side



# Hardware Specification

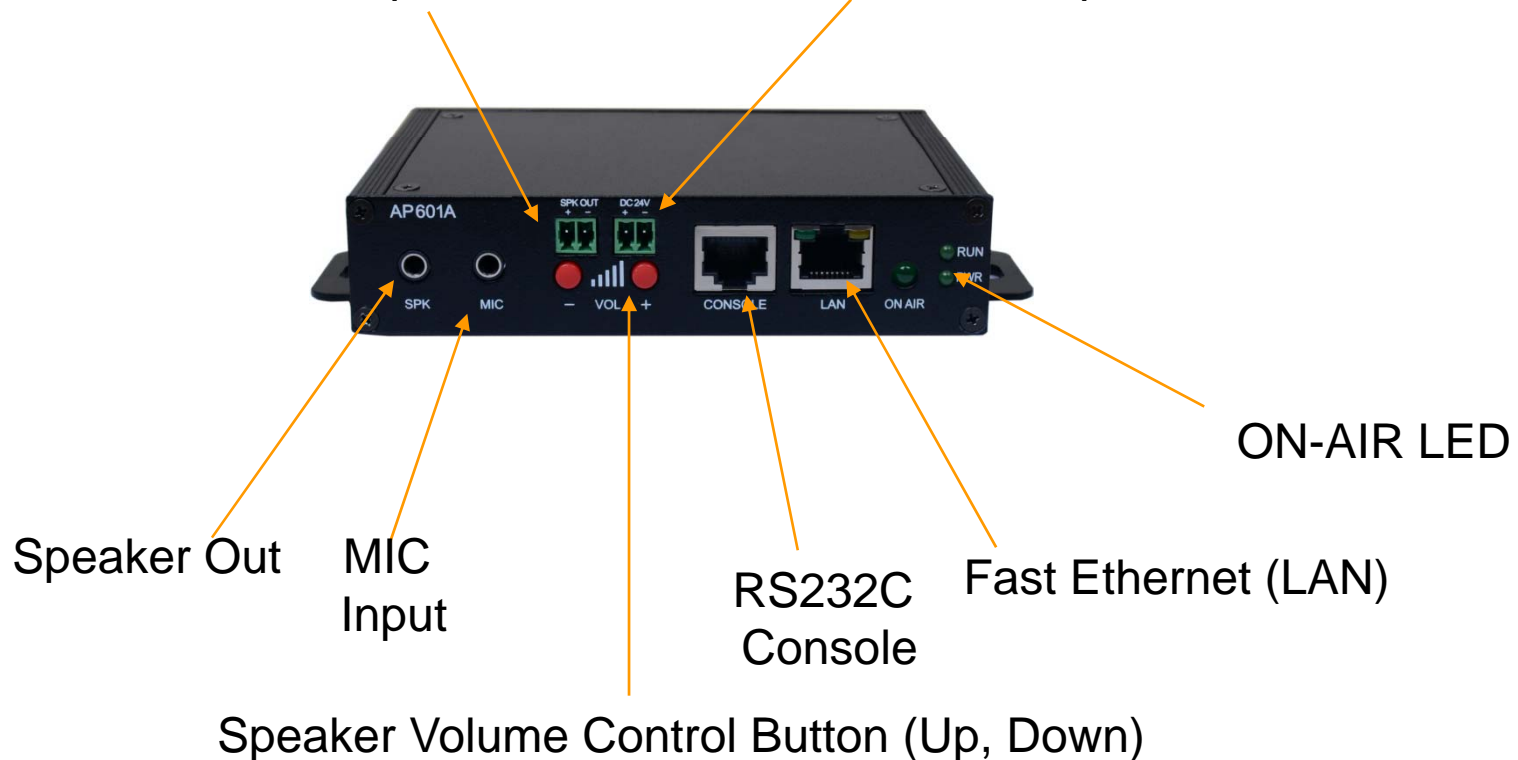
AP601 SIP Paging Terminal

RISC  
CPU

High-end  
DSP

## Front Side (AMP. Built-In Model : AP601A)

AMP. Speaker Out      24V DC Power Input for Internal AMP.



# Hardware Specification

AP601 SIP Paging Terminal

RISC  
CPU

High-end  
DSP

## Back Side



External Power  
Supply Adaptor

Power Switch

# AP1602

## SIP Audio Broadcasting Terminal



# Product Overview

## AP1602 SIP Audio Broadcasting Terminal

- SIP Protocol based Audio Broadcasting Terminal Solution
- RTP (Real-time Transport Protocol) Support for Media Transmission
- IP based Audio Broadcasting Terminal Solution (AddPac Proprietary Protocol)
- Hardware Architecture for Audio Broadcasting Terminal Service
- One(1) Module Slot for Audio Encoding & Decoding Service
- Remote Broadcasting Service at terminal side
- VoIP Codec Support (G.711, G.726, etc)
- Unicast and Multicast Broadcasting Scheme
- SPMS (SIP Paging Management Software) Support
- Various Audio Broadcasting Module Support
- On-AIR Blue LAMP
- Firmware Upgradeable Architecture
- Broadcasting Solution with Outstanding Network Service Capability

# Hardware Specification

AP1602 SIP Audio Broadcasting Terminal

A dark blue square with a light blue border containing the text "RISC CPU" in white.

RISC  
CPU

A dark blue square with a light blue border containing the text "High-end DSP" in white.

High-end  
DSP

- RISC Microprocessor Computing Power
- High-end Programmable DSP Hardware Architecture
- One(1) Module Slot for Audio Broadcasting Codec Module
- VoIP Audio Encoding/Decoding Service
- ON-AIR Blue LAMP
- Two(2) 10/100Mbps Fast Ethernet Interface
- Option Module : AP-AUDIO2
  - Two(2) 3.5mm Audio Input/Output Interface
- Option Module : AP-AUD1S3
  - One(1) 3.5mm Audio Input/Output Interface
  - Three(3) FXS VoIP Interface



# Hardware Specification

AP1602 SIP Audio Broadcasting Terminal

RISC  
CPU

High-end  
DSP

## AP1602 Front Side



Two(2) 10/100Mbps  
LAN

RS232C Console

Status LCD

On-Air Blue LAMP  
& Switch

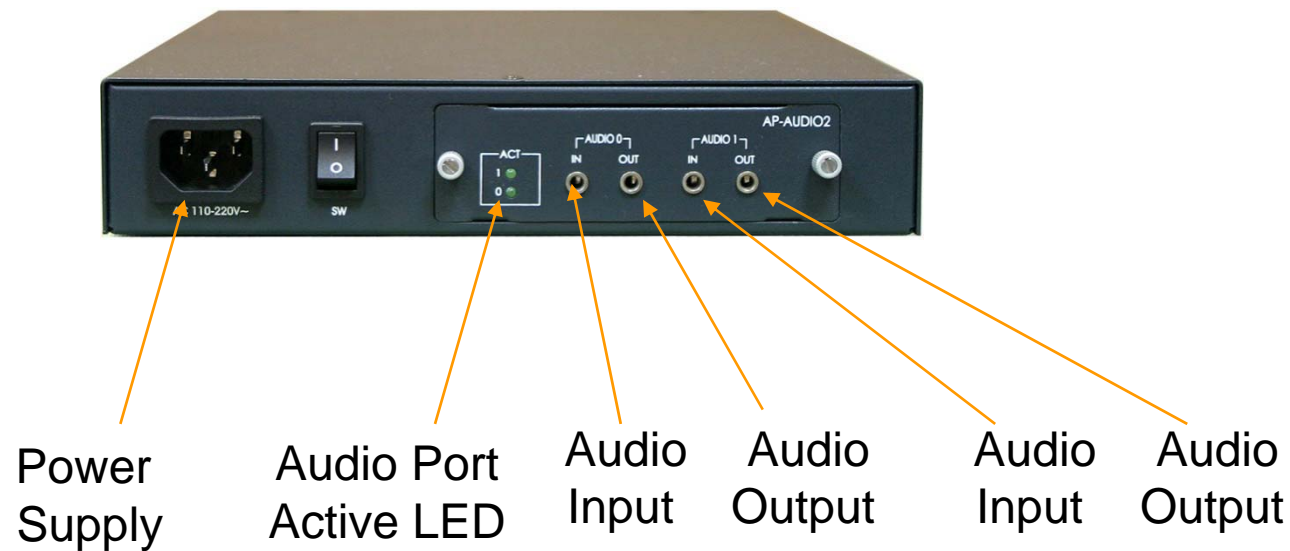
# Hardware Specification

AP1602 SIP Audio Broadcasting Terminal

RISC  
CPU

High-end  
DSP

## AP1602 Back Side



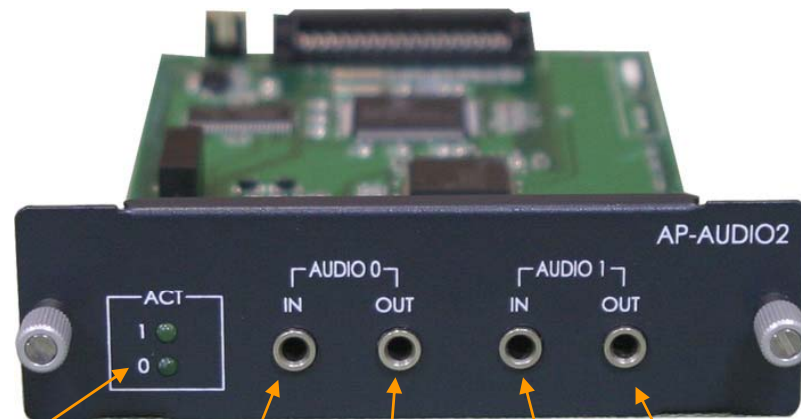
# Hardware Specification

AP1602 SIP Audio Broadcasting Terminal

RISC  
CPU

High-end  
DSP

## AP-AUDIO2 Board



Audio Port  
Active LED

Audio  
Input

Audio  
Output

Audio  
Input

Audio  
Output

Audio 0 Channel

Audio 1 Channel

**AddPac**

[www.addpac.com](http://www.addpac.com)

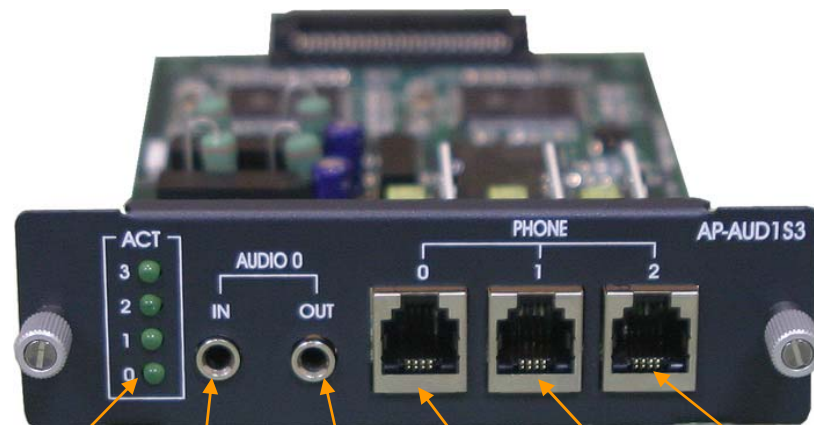
# Hardware Specification

AP1602 SIP Audio Broadcasting Terminal

RISC  
CPU

High-end  
DSP

## AP-AUD1S3 Board



Audio Port  
Active LED

Audio  
Input

Audio  
Output

FXS  
Port 0

FXS  
Port 1

FXS  
Port 2

Audio 0 Channel

# Hardware Specification

AP1602 SIP Audio Broadcasting Terminal

RISC  
CPU

High-end  
DSP

## AP1602 Audio Module

Audio Module Type	Audio Module Features
AP-AUDIO2	Two(2)-Channel Audio In/Out Port
	Audio Encoding/Decoding Service
	Audio IN : MIC IN Audio OUT :Line OUT 3.5mm Stereo JACK
	G.711, G.726, G.729A, G.723.1 Audio Codec


# Hardware Specification

AP1602 SIP Audio Broadcasting Terminal

RISC  
CPU

High-end  
DSP

## AP1602 Audio Module

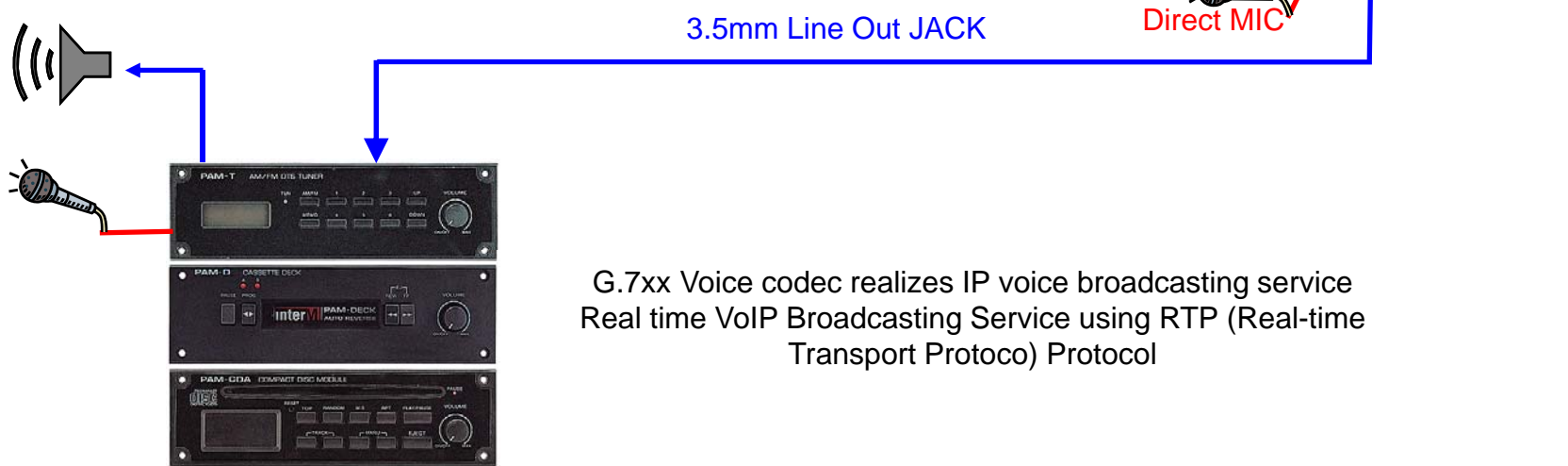
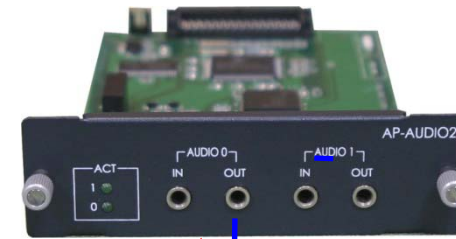
Audio Module Type	Audio Module Features
AP-AUD1S3	One(1)-Channel Audio In/Out Port
	Audio Encoding/Decoding Service
	Audio IN : MIC IN
	Audio OUT :Line OUT 3.5mm Stereo JACK
	Three(3) FXS Port Interface (RJ11 x 3)
	G.711, G.726, G.729A, G.723.1 Audio Codec

# AP-AUDIO2 Module

AP1602 SIP Audio Broadcasting Terminal

RISC  
CPU

High-end  
DSP



G.7xx Voice codec realizes IP voice broadcasting service  
Real time VoIP Broadcasting Service using RTP (Real-time Transport Protocol) Protocol

Headphon  
e

# AP1605

## SIP Audio Broadcasting Terminal





# Product Overview

## AP1605 SIP Audio Broadcasting Terminal

- SIP Protocol based Audio Broadcasting Terminal Solution
- RTP (Real-time Transport Protocol) Support for Media Transmission
- IP based Audio Broadcasting Terminal Solution (AddPac Proprietary Protocol)
- Hardware Architecture for Audio Broadcasting Terminal Service
- One(1) Module Slot for Audio Encoding & Decoding Service
- Remote Broadcasting Service at terminal side
- High Quality Audio Codec Support (High Quality Codec, G.711, G.726, etc)
- Unicast and Multicast Broadcasting Scheme
- SPMS (SIP Paging Management Software) Support
- **Optional Built-In Digital AMP.**
- On-AIR Blue LAMP
- **Volume Control Rotary Switch at front panel**
- High-Quality Audio/Voice Service
- Firmware Upgradeable Architecture
- Broadcasting Solution with Outstanding Network Service Capability

# Hardware Specification

## AP1605 SIP Audio Broadcasting Terminal

RISC  
CPU

High-end  
DSP

- RISC Microprocessor Computing Power
- High-end Programmable DSP Hardware Architecture
- One(1) Module Slot for Audio Broadcasting Codec Module
- High Quality Audio Encoding/Decoding Service
- ON-AIR Blue LAMP
- Rotary Volume Control Switch
- Option Module : AP-N3-HQA1000
  - One(1) 10/100Mbps Fast Ethernet (RJ45)
  - One(1) RS-232C Interface (RJ45) for Command Line Interface
  - Stereo Audio Input/Output Connector
- Option Module : AP-N3-HQA1000A
  - One(1) 10/100Mbps Fast Ethernet (RJ45)
  - One(1) RS-232C Interface (RJ45) for Command Line Interface
  - Stereo Audio Input/Output Connector
  - Built-in Audio AMP.

# Hardware Specification

AP1605 SIP Audio Broadcasting Terminal

RISC  
CPU

High-end  
DSP

## AP1605 Front Side



Status LCD

Rotary Volume  
Control Switch

On-Air Blue LAMP

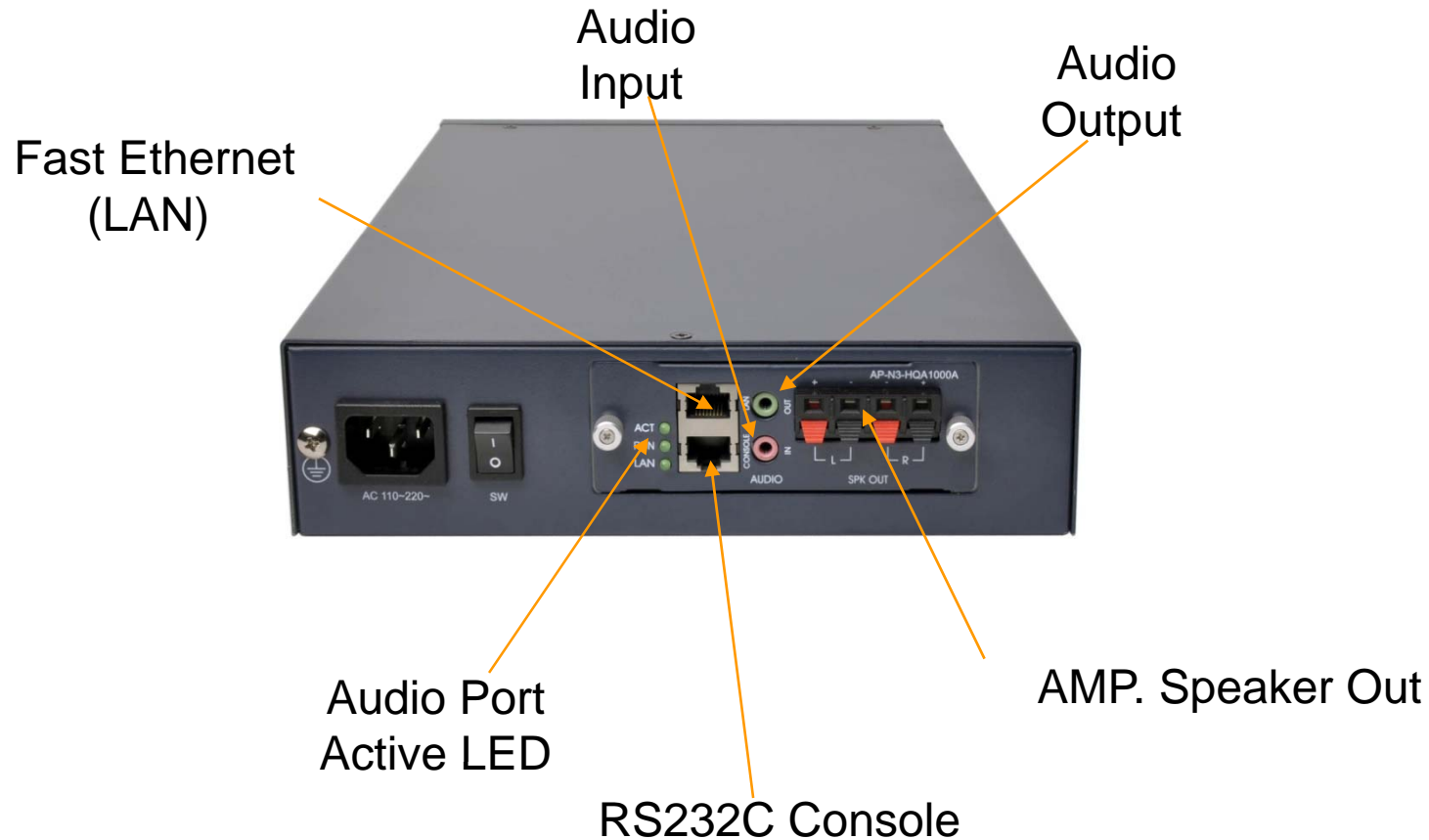
# Hardware Specification

AP1605 SIP Audio Broadcasting Terminal

RISC  
CPU

High-end  
DSP

## AP1605 Back Side



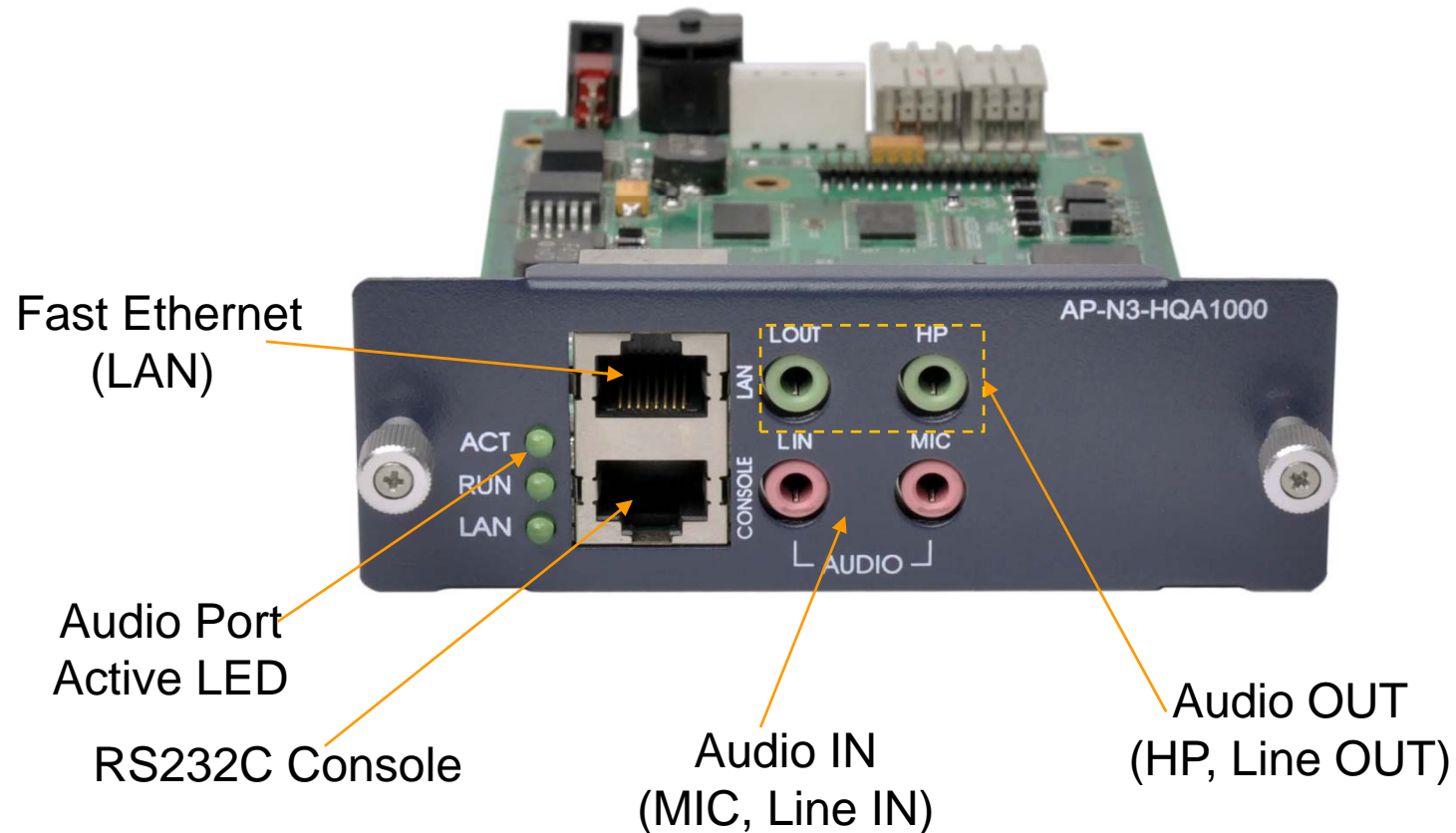
# Hardware Specification

AP1605 SIP Audio Broadcasting Terminal

RISC  
CPU

High-end  
DSP

## AP-N3-HQA1000 Board



**AddPac**

[www.addpac.com](http://www.addpac.com)

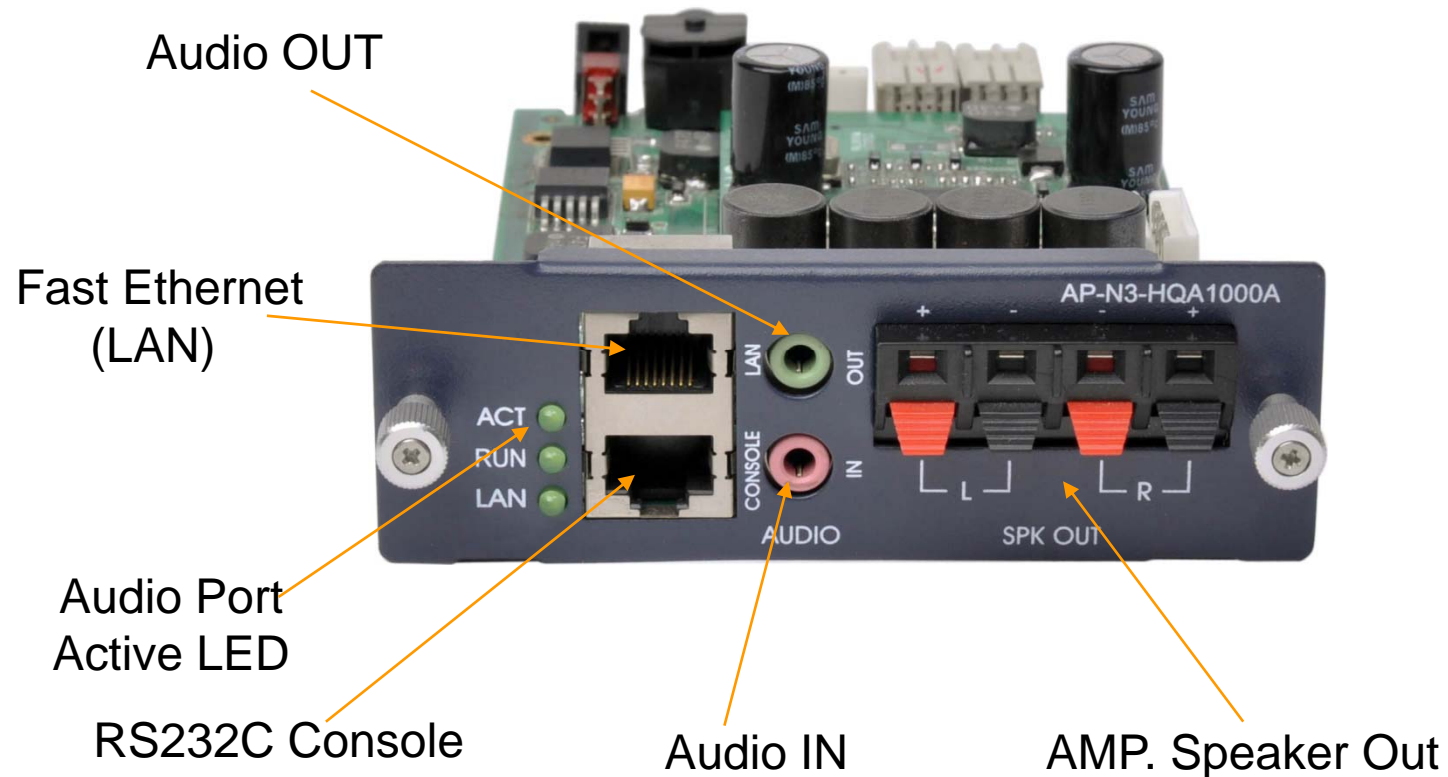
# Hardware Specification

AP1605 SIP Audio Broadcasting Terminal

RISC  
CPU

High-end  
DSP

## AP-N3-HQA1000A Board



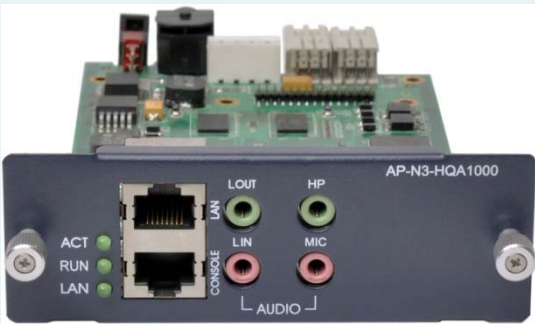
# Hardware Specification

AP1605 SIP Audio Broadcasting Terminal

RISC  
CPU

High-end  
DSP

## AP1605 Audio Module

Audio Module Type	Audio Module Features
<p data-bbox="562 703 893 743">AP-N1-HQA1000</p>  <p>The image shows a dark grey audio module with a green PCB. On the front panel, there are three green LEDs labeled ACT, RUN, and LAN. To the right of the LEDs are a BNC connector, a LAN port, and a console port. Further right are two pairs of audio ports: a green LOUT and HP port, and a red LIN and MIC port. The model number AP-N3-HQA1000 is printed on the top right of the front panel.</p>	<ul style="list-style-type: none"><li data-bbox="1178 699 1742 738">One(1)-Channel Audio In/Out Port</li><li data-bbox="1178 762 1608 802">One(1) Fast Ethernet Port</li><li data-bbox="1178 826 1525 866">One(1) RS232C Port</li><li data-bbox="1178 890 1742 930">Audio Encoding/Decoding Service</li><li data-bbox="1178 954 1559 994">Audio IN : MIC, Line IN</li><li data-bbox="1178 1010 1765 1050">Audio OUT : Headphone, Line OUT</li><li data-bbox="1178 1066 1518 1106">3.5mm Stereo JACK</li><li data-bbox="1178 1153 1843 1193">High Quality Codec, G.711 Audio Codec</li></ul>

# Hardware Specification

AP1605 SIP Audio Broadcasting Terminal

RISC  
CPU

High-end  
DSP

## AP1605 Audio Module

Audio Module Type	Audio Module Features
AP-N1-HQA1000A	One(1)-Channel Audio In/Out Port
	One(1) Fast Ethernet Port
	One(1) RS232C Port
	Audio Encoding/Decoding Service
	Audio IN
	Audio OUT
	AMP. Built-in Speaker Out (Left, Right)
	4ohm Speaker : 50Watt
	8ohm Speaker : 30Watt
	High Quality Codec, G.711 Audio Codec



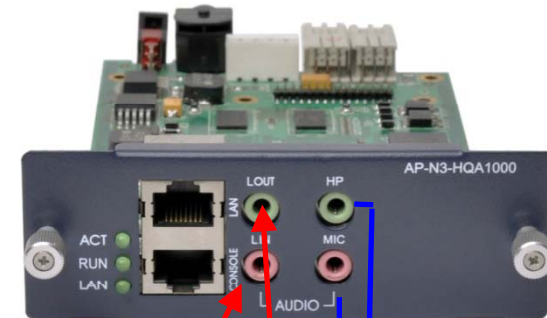


# AP-N3-HQ1000 Module

AP1605 SIP Audio Broadcasting Terminal

RISC  
CPU

High-end  
DSP



Connect with 1:2 Stereo Jack

Connect with 2:1 Stereo Jack

Direct MIC

- High Quality audio codec realizes high quality audio service
- Direct MIC-In/ Headphone In Port for monitoring
- Real time High Quality Audio Band Broadcasting



Headphon  
e



# Thank you!

**AddPac Technology Co., Ltd.**  
Sales and Marketing

Phone +82.2.568.3848 (KOREA)

FAX +82.2.568.3847 (KOREA)

E-mail [sales@addpac.com](mailto:sales@addpac.com)