

# AP-GTR1000

## IP GPS Time Receiver Terminal

High Performance IP GPS Time Receiver Terminal Solution

NTP Server Application



**AddPac**

**AddPac Technology**

Sales and Marketing

[www.addpac.com](http://www.addpac.com)

# Contents

- Product Overview
- Hardware Specification
- Simple NTP (Network Time Protocol)
- Network Diagram



# Product Overview

## AP-GTR1000 IP based GPS Time Receiver Terminal

- High Performance GPS Time Receiver Terminal Solution
- IP based GPS Time Receiver (Location Free, etc)
- NTP (Network Time Protocol) Sever Solution
- Dual RS232 Port for GPS Time Information Transmission
- LCD Display for GPS Time Information
- External Antenna Interface Support
- Various Antenna Support for GPS Signal
- Blue LAMP for Device Status
- Smart Web Manager for System Configuration & Management
- Window, Linux Simple Socket API Program Support
- Firmware Upgradeable Architecture
- Broadcasting Solution with Outstanding Network Service Capability

# Hardware Specification

AP-GTR1000 IP based GPS Time Receiver Terminal

RISC  
CPU

High-end  
GPS

- RISC Microprocessor Computing Power
- High-end GPS Module Hardware Architecture
- One(1) Module Slot for GPS Module
- LCD Display at Front Side
- Blue LAMP
- One(1) 10/100Mbps Fast Ethernet Interface
- Dual(2) DB-9 RS232C Interface
- Internal Power Supply
- Rack Mount Bracket (Option)
- GPS Antenna (Option)
- Option Module : AP-GPS-RS232
  - Two(2) DB-9 RS232C Interface Port
  - GPS Antenna Interface Port

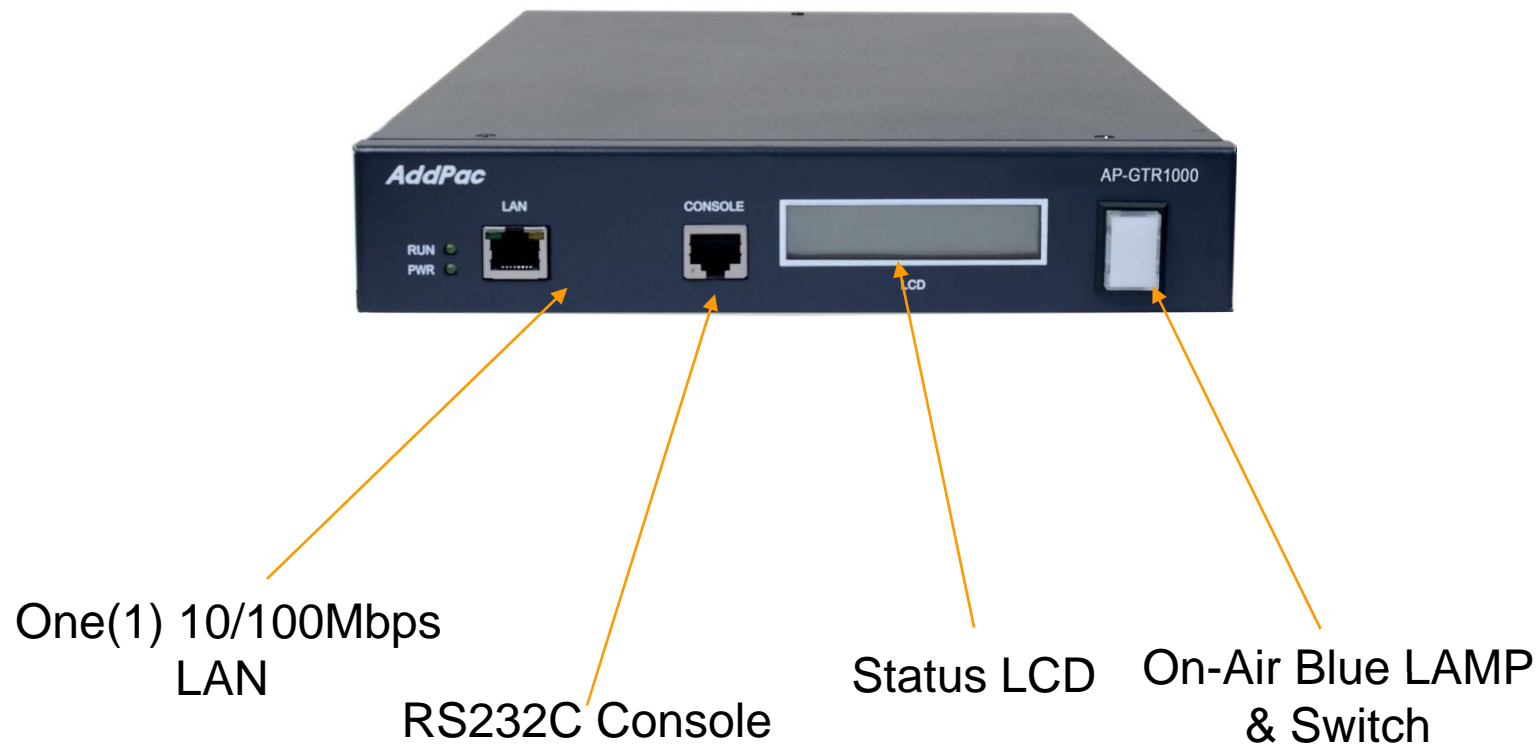
# Hardware Specification

AP-GTR1000 IP based GPS Time Receiver Terminal

RISC  
CPU

High-end  
GPS

## Front Side



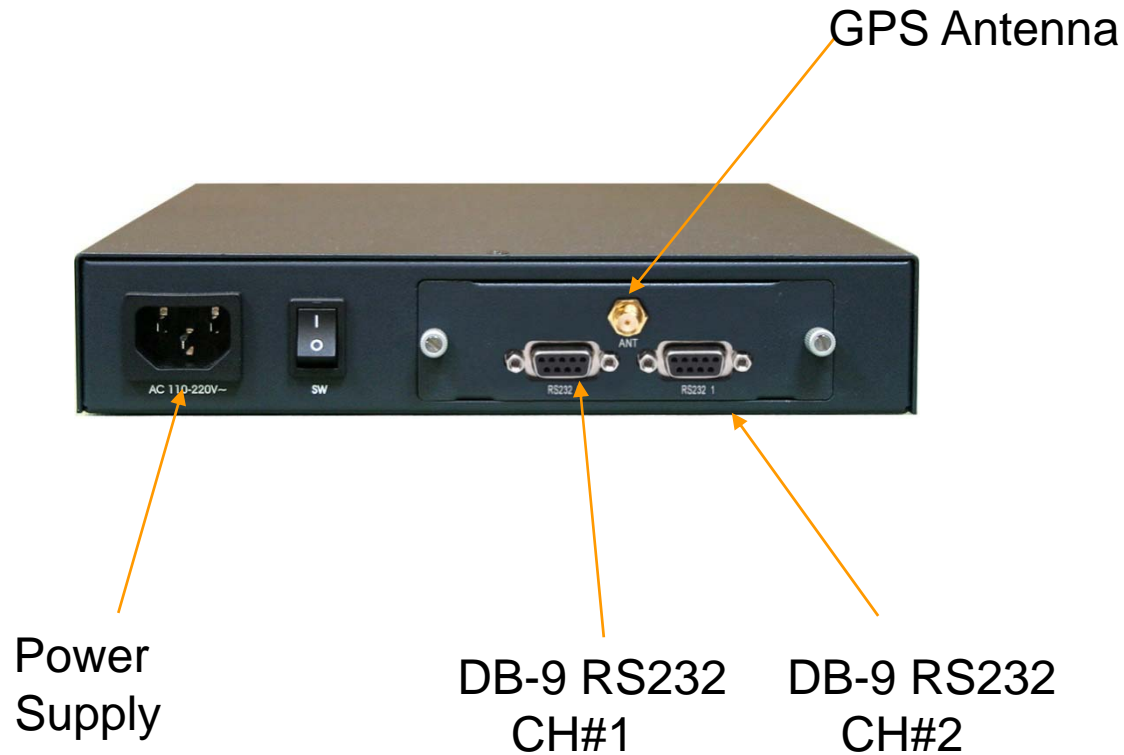
# Hardware Specification

AP-GTR1000 IP based GPS Time Receiver Terminal

RISC  
CPU

High-end  
GPS

## Back Side



# Hardware Specification

AP-GTR1000 IP based GPS Time Receiver Terminal

RISC  
CPU

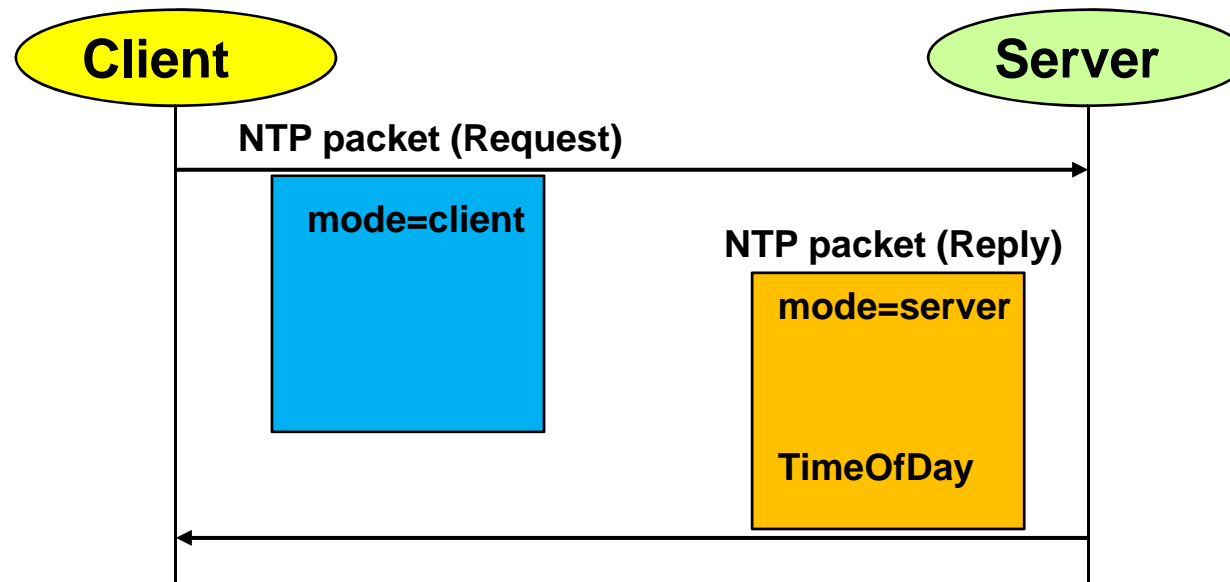
High-end  
GPS

## GPS Antenna



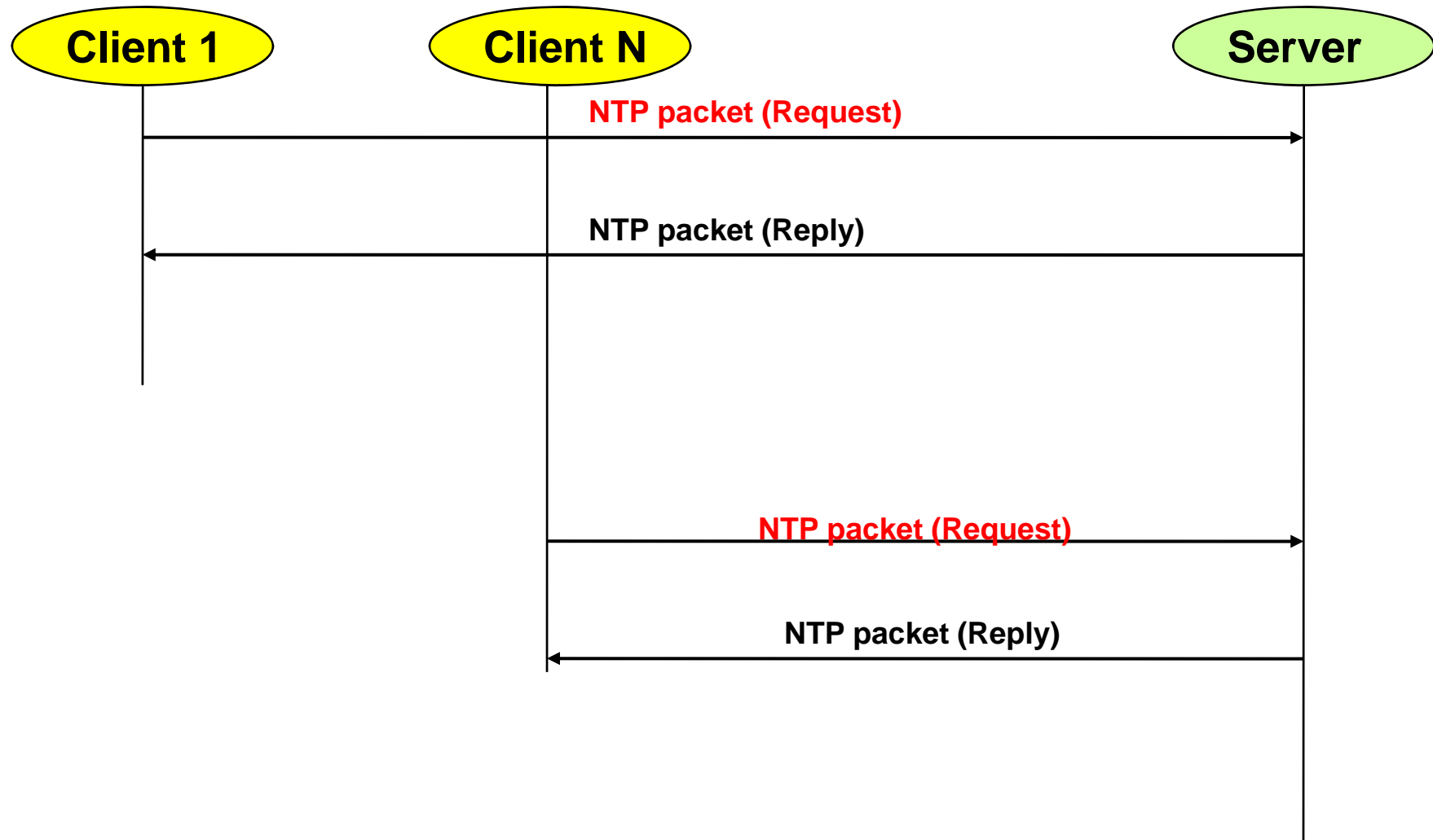
# SNTP (Simple Network Time Protocol)

- Transport : UDP (port number 123)
- Protocol Version : 4
- Client/Server Mode

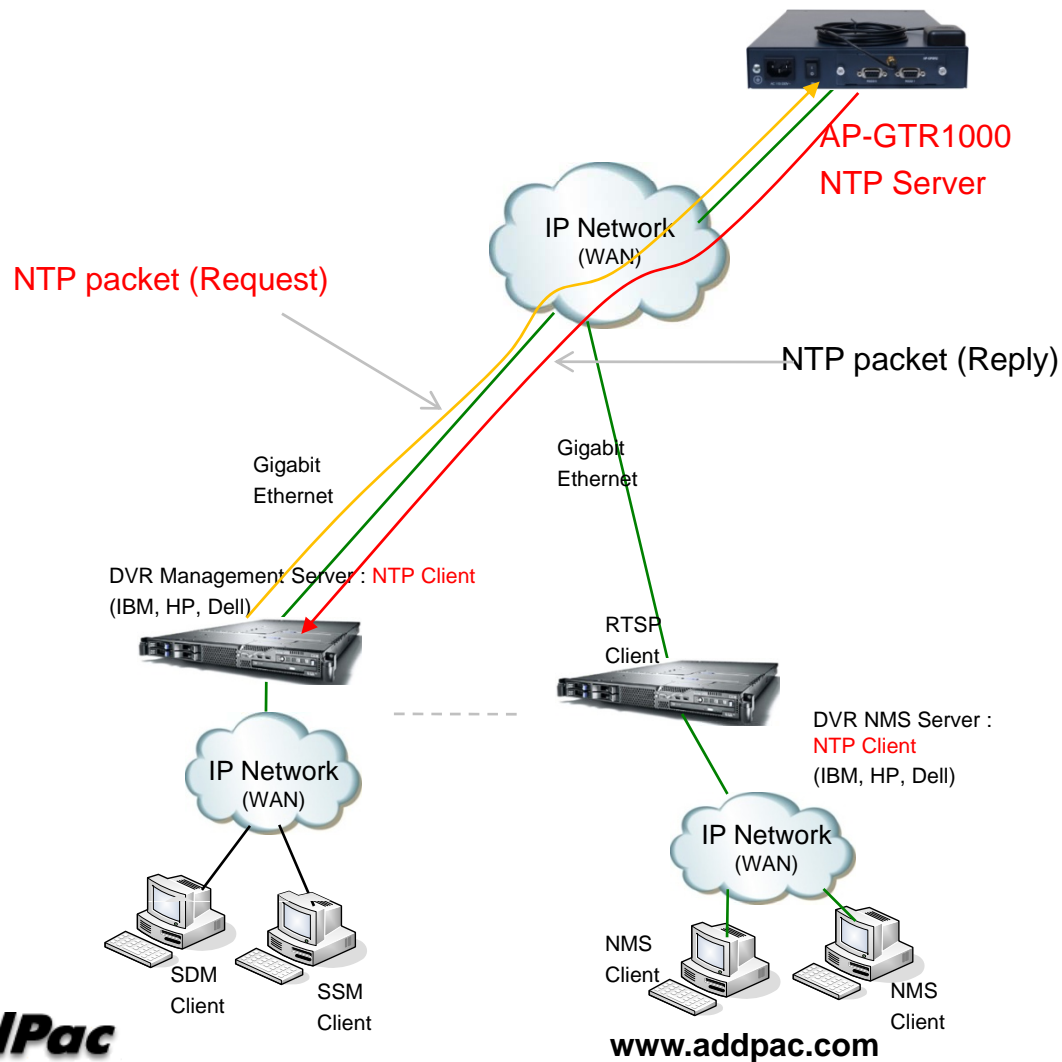




# SNTP (Simple Network Time Protocol)

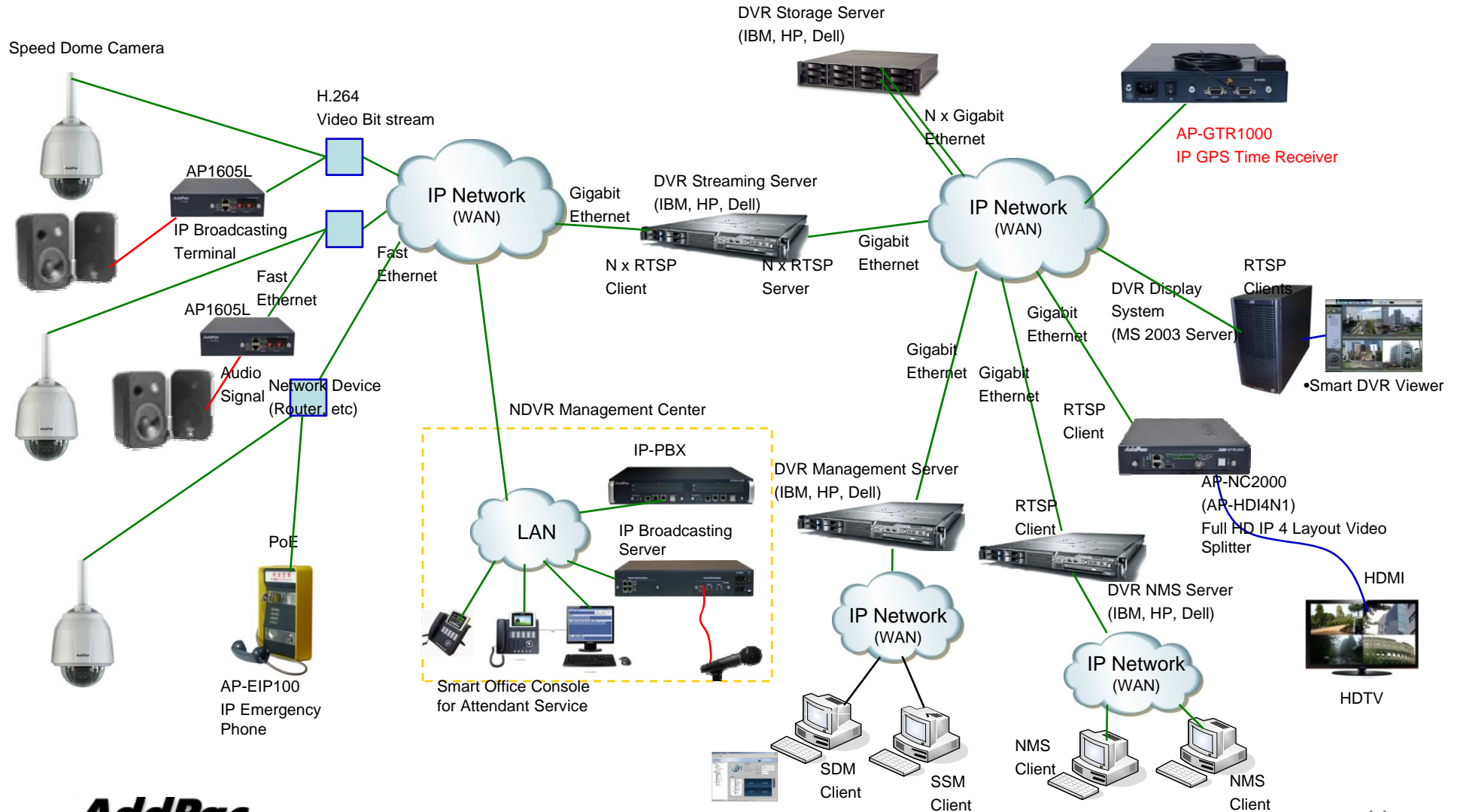


# SNTP (Simple Network Time Protocol)



# Network Diagram

## AP-GTR1000 IP based GPS Time Receiver Terminal





# Thank you!

**AddPac Technology Co., Ltd.**  
Sales and Marketing

Phone +82.2.568.3848 (KOREA)

FAX +82.2.568.3847 (KOREA)

E-mail [sales@addpac.com](mailto:sales@addpac.com)