

AP-ICS100

Emergency IP Call System

High Performance Emergency IP Call System Solution

Yellow Color Design



AddPac

AddPac Technology

Sales and Marketing

Contents

- Product Overview
- Hardware Specification
- Software Service
- Network Service and Features
- Application Area
- Ordering Information

Product Overview

AP-ICS100 Emergency IP Call System

- High Performance Emergency IP Call System Solution
- Emergency IP Caller Solution for Indoor Application
- One(1) 10/100Mbps Fast Ethernet Interface Port
- Emergency Call Button with Backlight LED
- Emergency Call Button with Speaker Sound
- Speaker Interface Support for future use (Paging, etc)
- Power over Ethernet (PoE) : Option
- Powerful Network Protocols (PPPoE, DHCP, Static Routing, etc)
- Wall Mount Service
- IoT Alarm Service Application
- Firmware Upgradeable Architecture

Hardware Specification

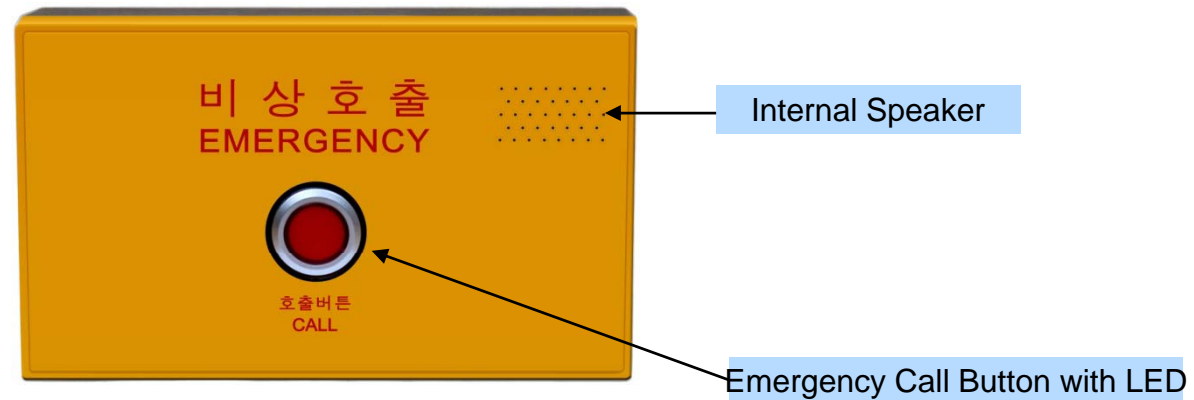
AP-ICS100 Emergency IP Call System

- RISC Microprocessor Computing Power
- Audio and Voice Interface
 - Internal Speaker
- Emergency Call Button & LAMP
- Network Interface
 - One(1) 10/100Mbps Fast Ethernet
- Power Supply
 - Power over Ethernet (Option)
 - External Power Adaptor

Hardware Specification

AP-ICS100 Emergency IP Call System

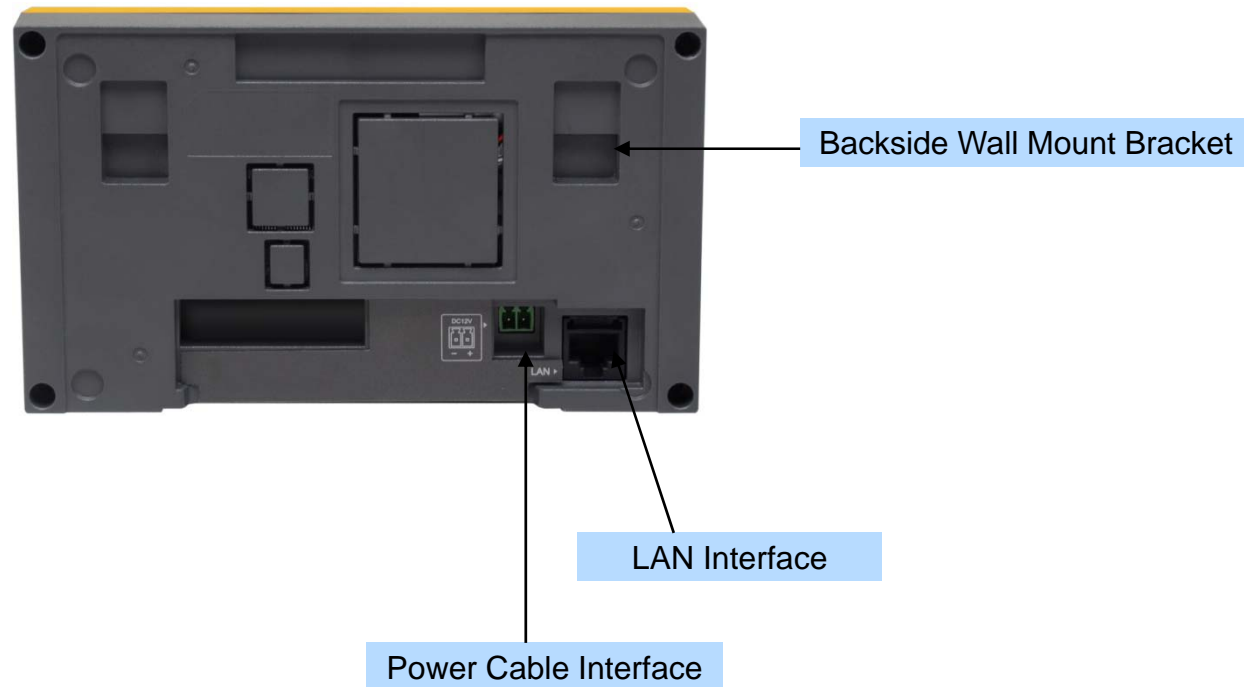
Front Side



Hardware Specification

AP-ICS100 Emergency IP Call System

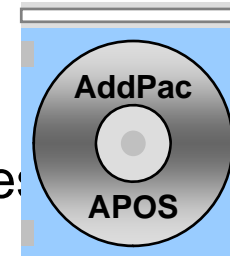
Back Side



Software Service

AP-ICS100 Emergency IP Call System

- Built-in AddPac APOS Internetworking Software
 - Scalability, Functionality, and Stability Features
- Firmware Upgradeable Architecture
- Industry Standard IP based Network Protocol Features



Network Service and Features

AP-ICS100 Emergency IP Call System

- Network Managements
 - Standard SNMP Agent (MIB v2) Support
 - Remote Management using Console, Telnet
 - Web based Management using HTTP Server Interface
- Security Functions
 - Standard & Extended IP Access List
 - Enable/Disable for Specific Network Protocols
 - Multi-level User Account Management
 - Auto-disconnect for Telnet/Console Sessions
 - PPP User Authentication Supports (PAP & CHAP)
- Operation & Managements
 - System Performance Analysis for Process, CPU, Connection Interface
 - Debugging, System Auditing, and Diagnostics Support
 - System Booting and Auto-rebooting with Watchdog Feature
 - System Managements with Data Logging
 - IP Traffic Statistics with Accounting

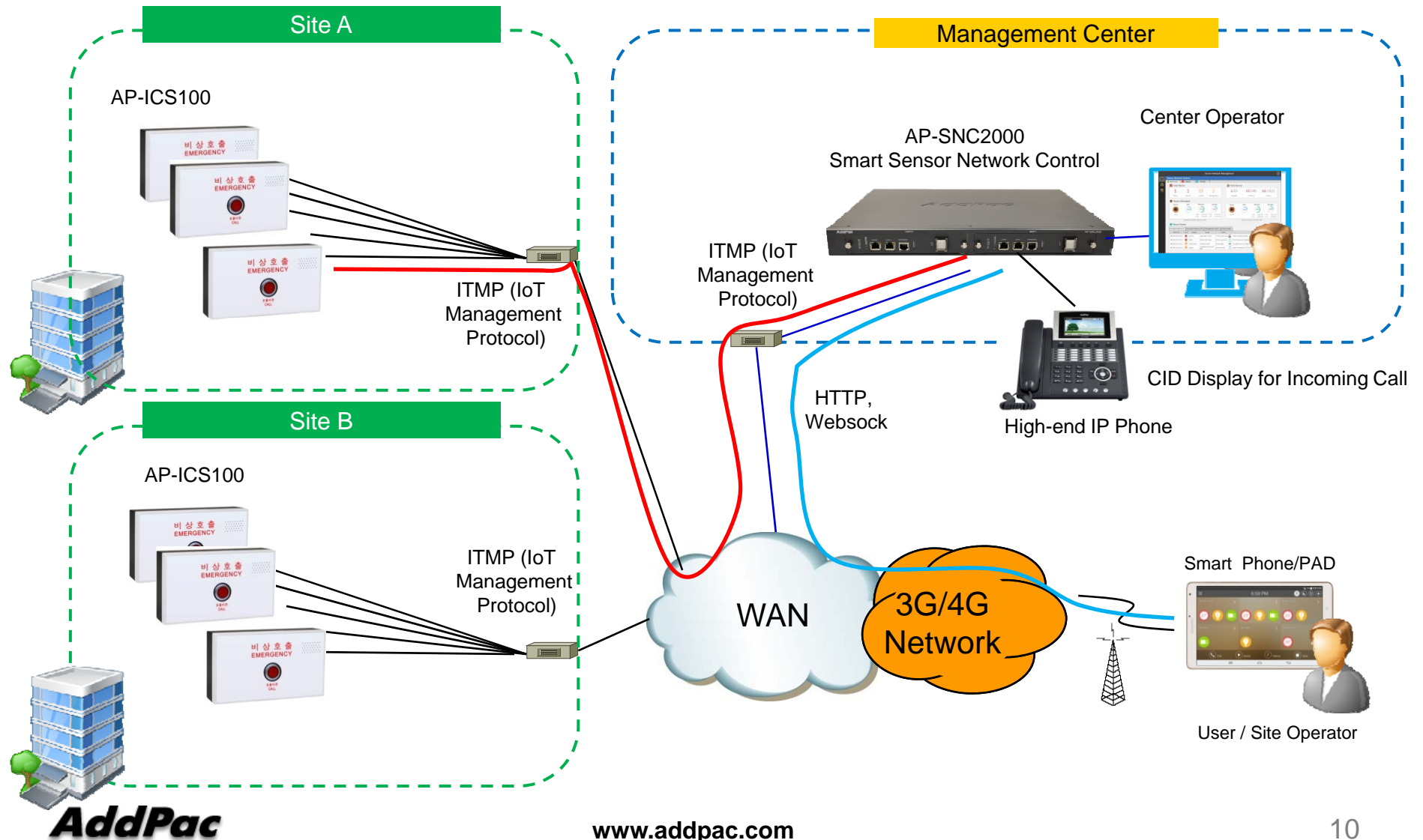
Network Service and Features

AP-ICS100 Emergency IP Call System

- Network Managements
 - DHCP Server & Relay Functions
 - Network Address Translation (NAT) Function
 - Port Address Translation (PAT) Function
 - Transparent Bridging (IEEE Standard) Function
 - Spanning Tree Bridging Protocol Support
 - Remote Bridging Support
 - Concurrent Routing and Bridging Support
 - Network time Protocol (NTP) Support

Emergency Call Center Application

AP-ICS100 Emergency IP Call System



Ordering Information

- AP-ICS100 Emergency IP Call System Hardware
 - AP-ICS100 Emergency IP Call System Main Body
 - RISC Microprocessor with Embedded DSP Architecture
 - Internal Speaker
 - Emergency Call Button with Back Light LED
 - One(1) 10/100Mbps Fast Ethernet
- Built-in APOS Internetworking Software for AP-ICS100
- Including 1 Year Hardware Warranty
- Product Documents
 - Install and Operation Guide (PDF)
- Pricing
 - AddPac Technology Regional Sales Manager
 - Authorized Sales and Marketing Representatives
 - Please Contact www.addpac.com



Thank you!

AddPac Technology Co., Ltd.
Sales and Marketing

Phone +82.2.568.3848 (KOREA)

FAX +82.2.568.3847 (KOREA)

E-mail sales@addpac.com