

AddPac VoIP Gateway Series

Release Note

V6.067

AddPac Technology Co., Ltd.

Phone (82 2)568-3848

Fax (82 2)568-3847

E-mail : info@addpac.com

<http://www.addpac.com>

[INDEX]

1.	가	3
1.1.	console	3
1.2.	ip-share	3
1.3.	ip-tos	5
1.4.	service-port	5
1.5.	vlan-pri	5
1.6.	encapsulation pptp	6
1.7.	ipcp default-route 가	6
1.8.	ipcp ms-dns 가	6
1.9.	ppp compression 가	6
1.10.	ETSI(European Telecommunications Standards Institute) type Caller-ID	7
1.11.	Tone Frequency	7
1.12.	minimize-voip-port service command 가	8
1.13.	arq attach-domain	8
1.14.	attach-src-e164	8
1.15.	LRQ option 가	9
1.16.	Display option 가	9
1.17.	codec 가	9
1.18.	DTMF relay 가	10
1.19.	fixed-ras-port parameter 가	10
1.20.	RADIUS Accounting 가	11
1.21.	SIP-UA	12
1.22.	gatekeeper 가	14
1.23.		14
1.24.	resource	15
1.25.	All-up-ace(ez-setup_for GUI) 가	15
2.		15
2.1.	Auto-Upgrade	15
3.	Bug Fix	16

1. 가

1.1. console

- command
- router(config)# console ?
 - access :
 - password <password>:
- default : disable

1.2. ip-share

Public IP AddPac interface PC()가
 AddPac IP 가 (, PC
 1)

- command
- router(config)# ip-share ?
 - enable : ip-share
 - interface ?
 - net-side : VoIP interface
 - local-side : interface
 - config ?
 - fin-timeout : Set Timeout value after TCP FIN
 - group-static-entry : Add group IP Share static entry
 - icmp-timeout : Set Timeout value for ICMP entry
 - static-entry : Add single IP Share static entry
 - syn-timeout : Set Timeout value after TCP SYN
 - tcp-timeout : Set Timeout value for TCP entry
 - udp-timeout : Set Timeout value for UDP entry
- Cable Modem(DHCP IP)

```
router(config)# dhcp-list 0 type server
router(config)# dhcp-list 0 address server interface ether0.0
router(config)# dhcp-list 0 option dhcp-lease-time 600
router(config-ether0.0)# ip address dhcp
router(config-ether1.0)# no ip address
router(config-ether1.0)# ip dhcp-group 0
router(config)# ip-share interface net-side ether0.0
router(config)# ip-share interface local-side ether1.0
router(config)# ip-share enable
```

- ADSL MyIP(ip)
router(config-ether0.0)# ip add 123.46.44.3 255.255.255.0
router(config-ether1.0)# no ip address
router(config)# route 0.0.0.0 0.0.0.0 123.46.44.1
router(config)# ip-share interface net-side ether0.0
router(config)# ip-share interface local-side ether1.0
router(config)# ip-share enable

- ADSL(PPPoE ip)
router(config)# dhcp-list 0 type server
router(config)# dhcp-list 0 address server interface ether0.0
router(config)# dhcp-list 0 option dhcp-lease-time 600
router(config-ether0.0)# no ip address
router(config-ether0.0)# encapsulation pppoe
router(config-ether0.0)# ppp authentication pap callin
router(config-ether0.0)# ppp pap sent-username <string> password <string>
router(config-ether1.0)# no ip address
router(config-ether1.0)# ip dhcp-group 0
router(config)# ip-share interface net-side ether0.0
router(config)# ip-share interface local-side ether1.0
router(config)# ip-share enable
router(config)# route 0.0.0.0 0.0.0.0 ethernet 0 0

- default
AP200, AP1000, AP1100 model default Enable , model
Disable .

1.3. ip-tos

Diffserv

Diffserv	IP	6	IP
Diffserv	PHB(Per Hop Behavior)		64

- command

router(config)# ip-tos ?

default : Data packet

delay : Request Low Delay

throughput : Request High Throughput

reliability : Request High Reliability

precedence : Specify Datagram Precedence

value : Specify the value directly

forward : local Data packet

bypass : local packet DS field VoIP

clear : local packet DS field 0x00

set : local packet DS field

rtp : udp/rtp data packet

sig : H.323/SIP signaling packet

- default : disable

1.4. service-port

service-port 가

- command

router(config)# service-port ?

ftpd <port>: FTP server port

httpd <port> : HTTP server port

snmpd <port> : SNMP agent port

telnetd <port> : Telnet Server port

tftpd <port> : TFTP server port

- default

ftpd : 21, httpd : 80, snmpd : 161, telnetd : 23, tftpd : 69

1.5. vlan-pri

IEEE802.1P/Q VLAN Priority field

- command

```

router(config)# vlan-pri ?
    default <0-7>:          data packet   VLAN
    rtp <0-7>: UDP/RTP data packet   VLAN
    sig <0-7>: H.323/SIP signaling packet   VLAN

```

- default : disable

1.6. encapsulation pptp

LAN interface encapsulation type pptp(point to point tunneling protocol) 가.

- command

```

router(config-ether0.0)# encapsulation pptp
router(config-ether0.0)# pptp ?
    ip local : local ip address
    ip remote : remote ip address
    mode ppp :                ppp
    mode dhcp :                dhcp

```

- default : disable

1.7. ipcp default-route 가

PPPoE default-router WAN interface , default-router
ADSL RAS

- command

```
router(config-ether0.0)# ppp ipcp default-route <cr>
```

- default : disable

1.8. ipcp ms-dns 가

PPPoE dnshost user가 , ADSL RAS

- command

```
router(config-ether0.0)# ppp ipcp ms-dns <cr>
```

- default : disable

1.9. ppp compression 가

PPP Compression control negotiation 가

- command

```
router(config-ether0.0)# ppp compression <pfc / acfc> <allow / <cr>>
```

- parameter

- Parameter

pfc Protocol-Field-Compression

- default

Tag Low(Hz) High(Hz) On1(ms) Off1(ms) On2(ms) Off2(ms) dBm Description

Tag	Low(Hz)	High(Hz)	On1(ms)	Off1(ms)	On2(ms)	Off2(ms)	dBm	Description
-	350	440	10000	0	0	0	-15	Dial tone
-	440	480	1000	2000	0	0	-12	RingBack tone
-	480	620	500	500	0	0	-12	LineBusy tone
-	480	620	300	200	0	0	-12	Reorder tone
-	1400	2060	100	100	0	0	0	LineLock tone

1.12. minimize-voip-port service command 가

```

firewall
range
가
start
end address
minimize-voip-port

```

- command

```

router(config-vservice-voip)# minimize-voip-ports service ?
signal-tcp-src : H.225 signalling source port
control-tcp-src : H.245 control source port
control-tcp-listen : H.245 contro listen port
rtp-udp-listen : RTP/RTCP port

```
- default : disable

1.13. arq attach-domain

```

ARQ Message Destination Info E.164
, Destination Info domain name H323-ID 가
가 H323-ID가 acct@addpac.com , Destination E.164가 5551234
Destination Info H323 ID = 5551234@addpac.com
ARQ Message Destination Info E.164 = 5551234 가

```

- command

```

router(config-gateway)# arq attach-domain <cr>

```
- default : disable

1.14. attach-src-e164

```

ARQ LRQ message Source Info E.164
- command
router(config-gateway)# attach-src-e164 <cr>
- default : enable

```

1.15. LRQ option 가

- LRQ(Location Request) Gateway , ARQ
 LRQ option .
- command
 router(config-gateway)# lrq ?
 no-arp : LRQ
 with-arp : LRQ , fail , AQR
 domain-with-arp : H.323 domain LRQ
 - default : disable

1.16. Display option 가

- Q.931 display field h323-ID가 , file H323-ID E.164
 address file .
- command
 router(config-vservice-voip)# display send ?
 h323id : h323-id display field
 e164 : E.164 display field
 none : q931 message display field .
 - default : h323-id

1.17. codec 가

- codec type , codec type 가
- codec type 가
- command
 router(dialpeer-1000-voice)# codec-variant ?
 g7231 ?
 standard : G7231 standard type, no SID
 annex-a : G7231 annex A type, on SID
 g729 ?
 standard : G729 standard type, no SID, High Complexity
 annex-a : G729 annex A type, no SID, low Complexity
 annex-b : G729 annex B type, on SID, High Complexity
 annex-ab : G729 annex AB type, on SID, low Complexity
 - default
 g7231 : annex A type
 g729 : g729 standard type

1.18. DTMF relay 가

- dtmf-relay rtp-2833
DTMF RTP gateway generation RFC-2833 . port inband dtmf real-time dtmf tone remote 가

RFC-2833

- dtmf-relay rtp
DTMF RTP gateway가 DTMF tone generation inband inband packet DTMF 가

- dtmf-relay h245-signal
DTMF H245 duration inband user가 digit h245-alphanumeric 가 dtmf h245-signal user가 tone remote

- No dtmf-relay

- h245-alphanumeric

- command
router (config-dialpeer-voip-1000)# dtmf-relay < rtp | rtp-2833 | h245-alphanumeric | h245-signal>

- default
dtmf-relay h245-alphanumeric]

1.19. fixed-ras-port parameter 가

- : RAS source port 22000 fix 가 .
- : RAS source port parameter 가
- command
router (config-gateway)# fixed-ras-port <<0-65536> | <cr> >

1.20. RADIUS Accounting 가

Before : Syslog Protocol (CDR)

After : Syslog RADIUS Protocol

Cisco , Cisco

- command
- router(config)# radius ?
 - accounting set accounting option
 - cisco-vsa enable Cisco Vender Specific Attributes
 - key set shared key (secret key)
 - host set radius server address
 - retransmit set retransmit counter value (default 3 times)
 - timeout set retransmit timeout value (default 3 seconds)

host

radius server IP address UDP port(def. 1646)

key

radius server shared key(password)

retransmit

radius server ack (def. 3)

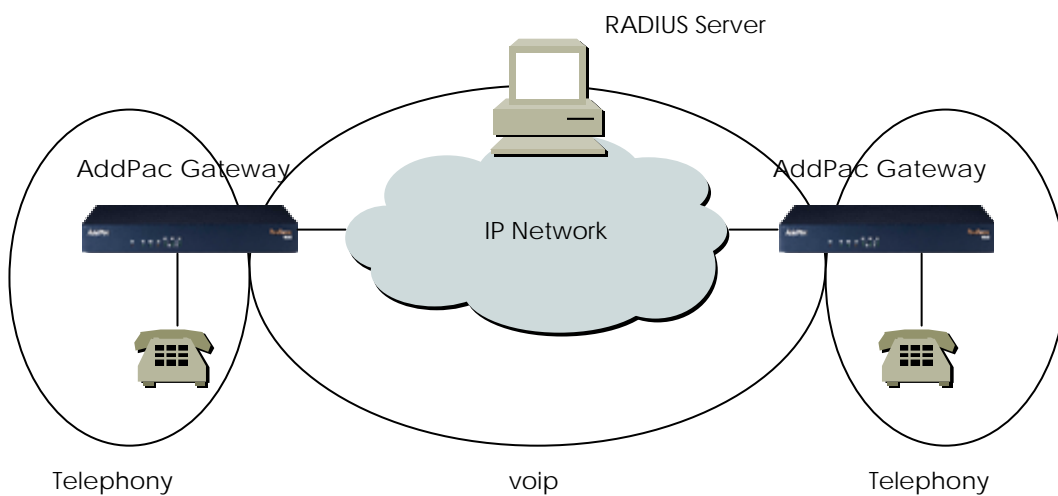
timeout

radius server ack (def. 3)

cisco-vsa

Cisco Vender Specific enable

accounting



- router(config)# radius accounting ?

telephony set telephony accounting event option

voip set voip accounting event option

telephony : h323-call-type

voice-port (. Hook-off time, hook-on time)

voip : h323-call-type

voip (. Setup time, connect time, disconnect time)

- router(config)# radius accounting telephony ?

none *disable all event*

start-stop *start and stop of a session*

stop-only *only stop of a session*

start-stop : start, stop session

stop-only : stop session

none : session (default)

- default : disable

1.21. SIP-UA

SIP User Agent 가

SIP System User Agent Network Server . User Agent H.323

UAC(User Agent Client)

UAS(User Agent Server)

User Agent 가 Network Server

command

router(config)# sip-ua

router(config-sip-ua)# ?

no set to default configuration

register try registration to sip registrar

signalling-port set SIP signalling port (default 5060)

sip-server Configure a SIP Server Interface

sip-username Set Username of SIP User Agent

sip-password Set Password of SIP User Agent

timeout Set timeout value

end Go to Top menu
 exit Exit from the EXEC

router(config-sip-ua)# sip-server ?

<A.B.C.D> set SIP Server IP address
 <cr>

router(config-sip-ua)# register ?

e164 set SIP REGISTER with E164 port
 gateway set SIP REGISTER with Gateway

register e.164 register , gateway register
 e.164 register port , pots peer register gateway register
 gateway register

router(config-sip-ua)#timeout ?

retry set SIP retry timeout value (msec)
 reg set SIP REGISTER timeout value (sec)

timeout register retry 가

router(config-sip-ua)# sip-username <string>

proxyserver username . ()

router(config-sip-ua)# sip-password <string>

proxyserver password . ()
 default : disable

router(config-dialpeer-voip-1000)# session protocol ?

sip use SIP

 session protocol sip voip-peer sip protocol

h.323 , no session protocol

 proxy-server

router(config-dialpeer-voip-100)# session target ?

- <A.B.C.D> Set session target IP address.
- ras Use gatekeeper to get IP address.
- sip-server Use SIP server to get IP address.

session target sip-server .

1.22. gatekeeper 가

Gatekeeper 가

AddPac VoIP Gateway Gatekeeper Main-Branch Office
 Gateway , (Dynamic)Ip
 Primary Gatekeeper Gateway service , Secondary
 Gatekeeper Primary Gatekeeper (monitoring)
 Primary Gatekeeper가 , Secondary Gatekeeper가
 service
 , Primary Gatekeeper가 service Secondary
 Gatekeeper service , Primary Gatekeeper .

- command
- router(config)# gatekeeper
 router(config-gk)# ?
 primary-gk <Ip-Address>
 : Secondary GK , Primary G/K Ip- address
 default : disable
 server {identifier | port} : {Gatekeeper ID | service UDP port }
 default : {AddPacGK | 1719}
 shutdown <cr> : Gatekeeper shutdown .(GK)
 GK 'no shutdown' ()
 default : disable
 timer ttl <seconds> : TimeToLive value
 default : 60
 no {primary-gk | server | shutdown | timer} : default
- default : disable

1.23.

AddPac VoIP Gateway 가 가

ICMP Echo Request (Ping)

가

VoIP Gateway Call

PSTN Call

PSTN

ICMP Echo Request

가

PSTN

VoIP Call

PSTN 가

ICMP Echo Request (Ping)

PSTN

- command
- router(config-ether0.0)# ip echo {host | interval | timeout}
 - host <Ip-Address> : host Ip-Address
 - interval <10~65535> : ICMP Echo Request (default 20)
 - timeout : timeout count (default 3)
- default : disable

1.24.resource

- command
- router(config-gateway)# resource threshold {<1-100> | <cr>}
- default : disable

1.25.All-up-ace(ez-setup_for GUI) 가

All-up-ace(EZ-setup)

2. _____

2.1. Auto-Upgrade

Web Server APOS config file Remote Gateway file download

auto-script file download

- command
- router(config)# auto-script <filename> Auto running scriptor file name (filename.inf)
- router(config)# auto-upgrade url < http://hostname/URL >
- router(config)# auto-upgrade authentication login <login name> password <password>
- router(config)# auto-upgrade configuration-serial <serial number>
- router(config)# auto-upgrade action <auto>

-

Web Server file , .

C:/www/addpac/apos/

- ap200.inf
- ap1100.inf
- ap200rom.v6.067.bin
- ap1100rom.v6.067.bin
- config.cfg
- packing.lst

packing list

```
./ap200rom_v6_067.bin 6.067 20 Jan 2003 16:30:00
./ap1100rom_v6_067.bin 6.067 20 Jan 2003 16:30:00
./config.cfg 20030120 20 Jan 2003 16:30:00 2002
./ap200.inf 20030120 20 Jan 2003 16:30:00
./ap1100.inf 20030120 20 Jan 2003 16:49:00
```

auto-script file (가 , ap200.inf)

```
!
voice service voip
no busyout monitor gatekeeper
no busyout monitor voip-interface
!
voice-port 0/0
caller-id enable
voice-port 0/1
caller-id enable
!
```

3. Bug Fix

