

GSM Voice Recording Solution



AP-GS3000 GSM Gateway
(Voice Recording Feature Embedded)

AddPac

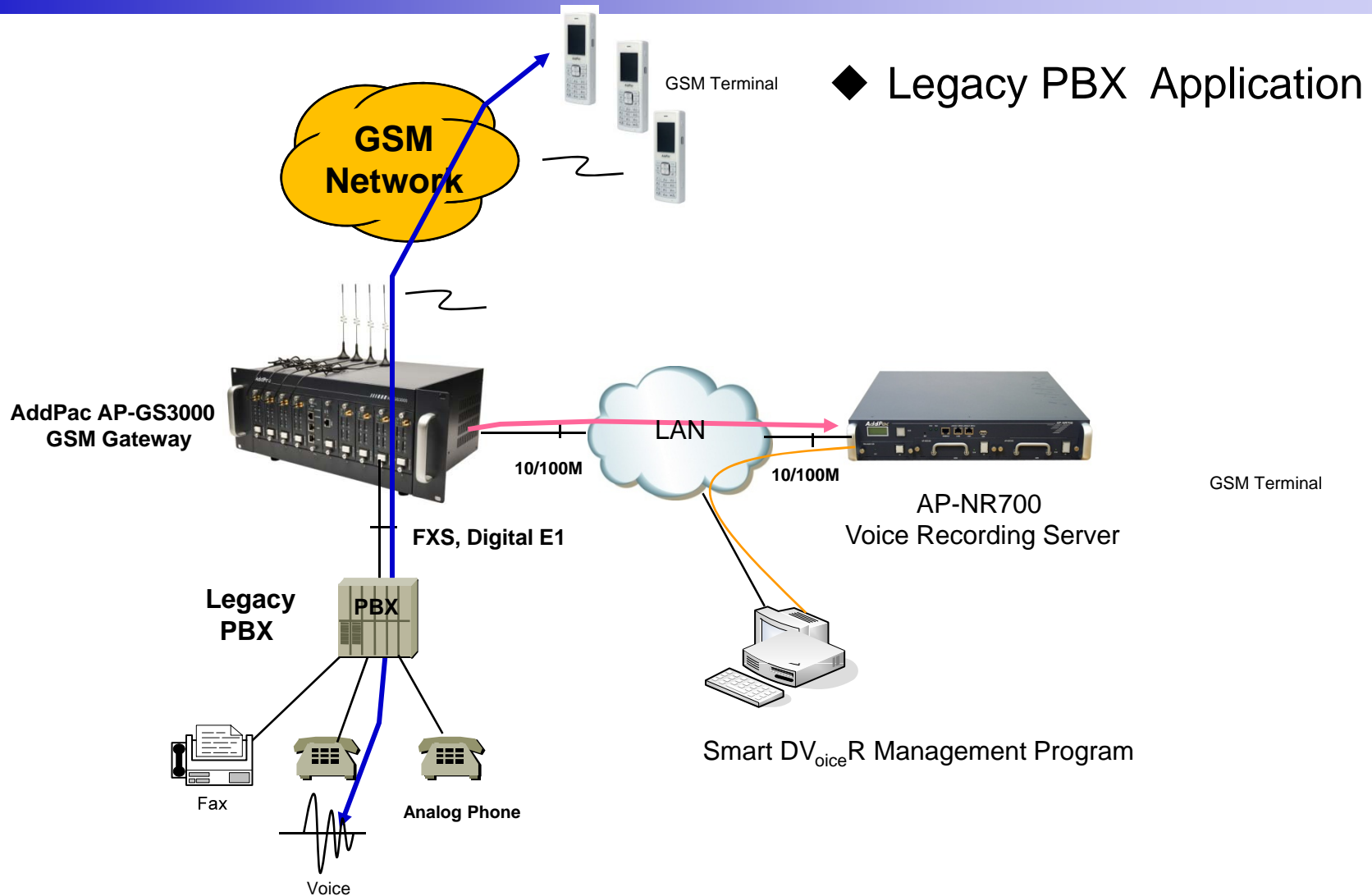
AddPac Technology

2012, Sales and Marketing

Contents

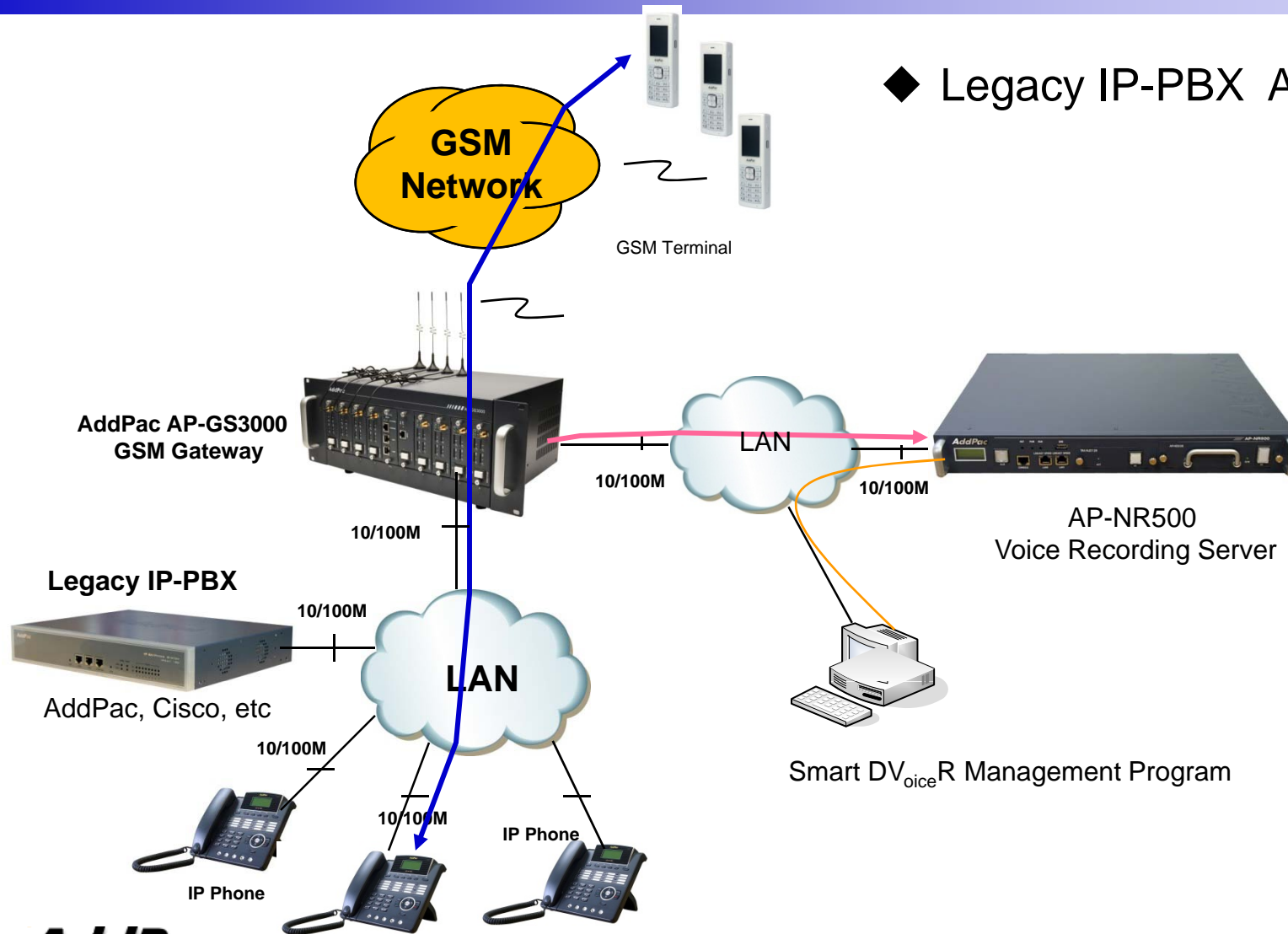
- Network Diagrams
- Product Specifications
 - Voice Recording Server : AP-NR3000, AP-NR2000, AP-NR700, AP-NR500
 - GSM Gateways for Voice Recording Extension: AP-GS3000, AP-GS2800, AP-GS2500, etc
 - Smart Digital Voice Recording Management Program

Network Diagram (HQ : Case 1)



Network Diagram (HQ : Case 2)





◆ Legacy IP-PBX Application





IP Voice Recording Server

IP Voice Recording Servers

Product	AP-NR500	AP-NR700	AP-NR2000	AP-NR3000
				
Concurrent Recording User	32channel	64channel	64channel	256channel
Voice Transcoder Module(Optional)	Internal module (32channel)	Internal module (64channel)	External (AP-VTC1000)	External (AP-VTC1000)
HDD Module Slot Number	One(1) : IDE	Two(2) : IDE	Ten(10) : IDE	Four(4) : SATA
LAN Port	2 (Fast Ethernet)	2 (Fast Ethernet)	2 (Fast Ethernet)	1 (Gigabit)
Console	1	1	1	N/A
Power	Single PSU	Single PSU	Dual PSU	Single PSU

AP-NR3000

IP Voice Recording Server

- IP based Network Voice Recording Server
- Linux Operating System
- External GSM Gateway(ex:AP-GS3000) Interworking Support
- One(1) 10/100/1000Mbps Gigabit Ethernet Interface
- One(1) DVD Writer for Audio File Backup
- Up to Four(4) 3.5Inch SATA Hard Disk Interface Support
- USB Interface Support (Front Side, Back Side)



AP-NR2000

IP Voice Recording Server

- Embedded Platform
- High-End 64bit RISC Processor
- Real-time Voice Recording
- RTP/RTSP Support
- RISC Microprocessor Computing Power
- Main Chassis
 - One(1) RS-232C Console (RJ45)
 - Two(2) Giga Ethernet Port
 - Ten(10) Hard Disk Interface Slot



AP-NR700

IP Voice Recording Server

- Embedded Platform
- High-End 64bit RISC Processor
- Real-time Voice Recording
- RTP/RTSP Support
- RISC Microprocessor Computing Power
- Transcoding DSP Module (64ch)
- Main Chassis
 - One(1) RS-232C Console (RJ45)
 - Two(2) Giga Ethernet Port
 - Two(2) Hard Disk Interface Slot for RAID1 Configuration



AP-NR500

IP Voice Recording Server



- Embedded Platform
- High-End 64bit RISC Processor
- Real-time Voice Recording
- RTP/RTSP Support
- RISC Microprocessor Computing Power
- Transcoding DSP Module(32ch)
- Main Chassis
 - One(1) RS-232C Console (RJ45)
 - Two(2) Giga Ethernet Port
 - Single(1) Hard Disk Interface Slot





GSM Gateways for Voice Recording Extension

GSM Gateways with Voice Recording Extension

Model	AP-GS2500	AP-GS2800	AP-GS3000
			
Available Modules	AP-N1-GSM4 AP-N1-FXS8 AP-N1-FXO8 AP-N1-FXS4O4 AP-N1-E1	AP-N1-GSM4 AP-N1-FXS8 AP-N1-FXO8 AP-N1-FXS4O4 AP-N1-E1	AP-N1-GSM4 AP-N1-FXS8 AP-N1-FXO8 AP-N1-FXS4O4 AP-N1-E1
GSM Channel	Up to 16 Ch.	Up to 28 Ch.	Up to 36 Channel
GSM Antenna	One(1) / 4 Channel GSM Module (AP-N1-GSM4)	One(1) / 4 Channel GSM Module (AP-N1-GSM4)	One(1) / 4 Channel GSM Module (AP-N1-GSM4)
Module Slot	Four(4) Module Slots for GSM	Seven(7) Module Slots for GSM, E1/T1 Module Slot	Nine(9) Module Slots for GSM, E1/T1 Module Slot
LAN Port	2	2	2
Console	1	1	1
Power	Single PSU	Single PSU	Single PSU



AP-GS3000 GSM Gateway for Voice Recording Extension

Main Features

AP-GS3000 Multi-Port GSM Gateway

- Ten(10) Module Slots for 4-Port GSM Module, 8FXS/8FXO Analog Interface (Up to 32-Port GSM, Digital E1/T1 Module, CPU Module)
- **IP Voice Recording Probe Function Support**
- H.323/SIP Dual Concurrent Stack Embedded
- High Performance RISC & Programmable DSP Architecture
- G.711/G.726/G.723/G.729, T.38 Fax , VAD, etc
- Powerful Network Protocols (PPPoE, DHCP, Static Routing, etc)
- Two(2)10/100Mbps Fast Ethernet
- One(1) RS-232C Port for Command Line Interface
- Firmware Upgradeable Architecture
- VPMS (VoIP Plug&Play Management System) & NMS for Large Scale Deployment
- Advanced Voice QoS Mechanism
- Powerful Web based Management
- Rack Mountable Chassis with Internal Power Supply

Hardware Specification

AP-GS3000 Multi-Port GSM Gateway

- RISC Microprocessor Computing Power
- Ten(10) Module Slot for GSM, Analog/Digital Interface
- 4-Port GSM Module(AP-N1-GSM4), Hot-Swap
 - 4-Port SIM Card Slot
 - One(1) GSM Antenna Interface (Internal 4 Channel Combiner)
- VoIP Interface Module, Hot-Swap
 - 8-Port FXS Module (AP-N1-FXS8)
 - 8-Port FXO Module (AP-N1-FXO8)
 - Digital E1/T1 Module (AP-N1-E1)
- Network Interface
 - Two(2) 10/100Mbps Fast Ethernet (RJ45)
- RS232C Console Interface for CLI
- Run LED, LAN LED, Port LEDs
- Internal Power Supply





AP-GS2800 GSM Gateway for Voice Recording Extension

Main Features

AP-GS2800 Multi-Port GSM Gateway

- Seven(7) Module Slots for 4-Port GSM Module, 8FXS/8FXO Analog Interface (Up to 28-Port GSM, Digital E1/T1 Module, CPU Module)
- **IP Voice Recording Probe Function Support**
- H.323/SIP Dual Concurrent Stack Embedded
- High Performance RISC & Programmable DSP Architecture
- G.711/G.726/G.723/G.729, T.38 Fax , VAD, etc
- Powerful Network Protocols (PPPoE, DHCP, Static Routing, etc)
- Two(2)10/100Mbps Fast Ethernet
- One(1) RS-232C Port for Command Line Interface
- Firmware Upgradeable Architecture
- VPMS (VoIP Plug&Play Management System) & NMS for Large Scale Deployment
- Advanced Voice QoS Mechanism
- Rack Mountable Chassis with Internal Power Supply

Hardware Specification

AP-GS2800 Multi-Port GSM Gateway

RISC
CPU

High-end
DSP

- RISC Microprocessor Computing Power
- Seven(7) Module Slot for GSM, CDMA, Analog /Digital VoIP Interface
- 4-Port GSM Module(AP-N1-GSM4)
 - 4-Port SIM Card Slot
 - One(1) GSM Antenna Interface (Internal 4 Channel Combiner)
 - Hot-Swap
- VoIP Interface Modules (Hot-Swap)
 - 8-Port FXS Module (AP-N1-FXS8)
 - 8-Port FXO Module (AP-N1-FXO8)
 - Digital E1/T1 Module (AP-N1-E1)
- Network Interface
 - Two(2) 10/100Mbps Fast Ethernet (RJ45)
- RS232C Console Interface for CLI
- Run LED, LAN LED, Port LEDs
- Internal Power Supply





AP-GS2500 GSM Gateway for Voice Recording Extension

Main Features

AP-GS2500 Multi-Port GSM Gateway

- Four(4) Module Slots for 4-Port GSM Module, 8FXS/8FXO Analog Interface (Up to 16-Port GSM)
- **IP Voice Recording Probe Function Support**
- H.323/SIP Dual Concurrent Stack Embedded
- High Performance RISC & Programmable DSP Architecture
- G.711/G.726/G.723/G.729, T.38 Fax , VAD, etc
- Powerful Network Protocols (PPPoE, DHCP, Static Routing, etc)
- Two(2)10/100Mbps Fast Ethernet
- One(1) RS-232C Port for Command Line Interface
- Firmware Upgradeable Architecture
- VPMS (VoIP Plug&Play Management System) for Large Scale Deployment
- Advanced Voice QoS Mechanism
- Rack Mountable Chassis with Internal Power Supply

Hardware Specification

AP-GS2500 Multi-Port GSM Gateway

RISC
CPU

High-end
DSP

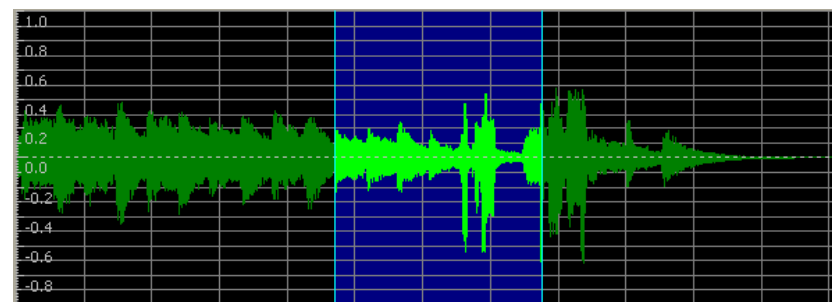
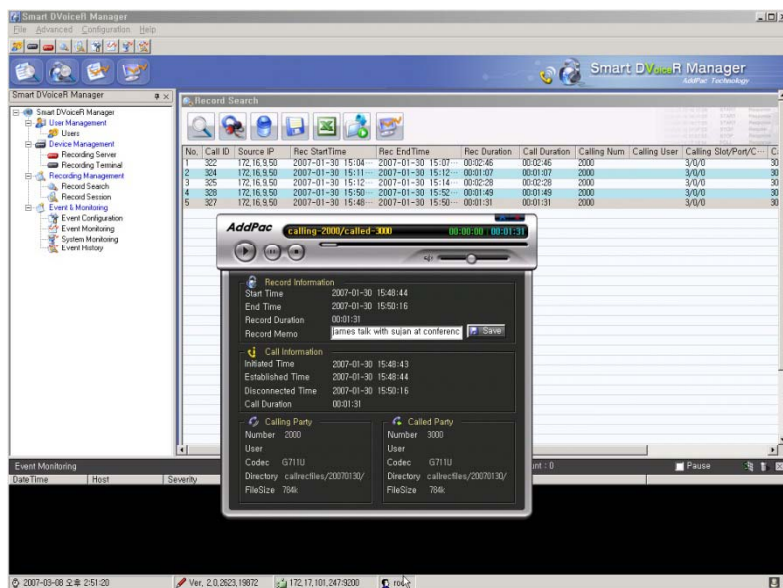
- RISC Microprocessor Computing Power
- Three Module Slot for GSM, Analog Interface
- 4-Port GSM Module(AP-N1-GSM4)
 - 4-Port SIM Card Slot
 - One(1) GSM Antenna Interface (Internal 4 Channel Combiner)
 - Hot-Swap
- VoIP Interface Module
 - 8-Port FXS Module (AP-N1-FXS8)
 - 8-Port FXO Module (AP-N1-FXO8)
 - Digital E1/T1 Module (AP-N1-E1)
 - Hot-Swap
- Network Interface
 - Two(2) 10/100Mbps Fast Ethernet (RJ45)
- RS232C Console Interface for CLI
- Run LED, LAN LED, Port LEDs
- Internal Power Supply





Smart DVoiceR Management Program for Voice Recording Server

Smart DVoiceR Management Program for HQ



- Call History Management (search/modify/delete/save)
- Media Play Management (Play/Stop/Seek/Pause)
- Live Call List Management, Live Call Monitoring
- Local Backup (File Manager Support, PC HDD, DVD) and Local Play
- User Management (registration/modify/delete/search)
- Server Status (CPU/Memory/HDD) & Event Monitoring
- Waveform Analyzing Function
- Recording Source Management (VoIP Gateway, IP Phone, etc)
- Live Recording Board



Thank you!

AddPac Technology Co., Ltd.
Sales and Marketing

Phone +82.2.568.3848 (KOREA)

FAX +82.2.568.3847 (KOREA)

E-mail sales@addpac.com