

# Local Government CCTV Solution



**AddPac**

**AddPac Technology**

2010, Sales and Marketing

[www.addpac.com](http://www.addpac.com)

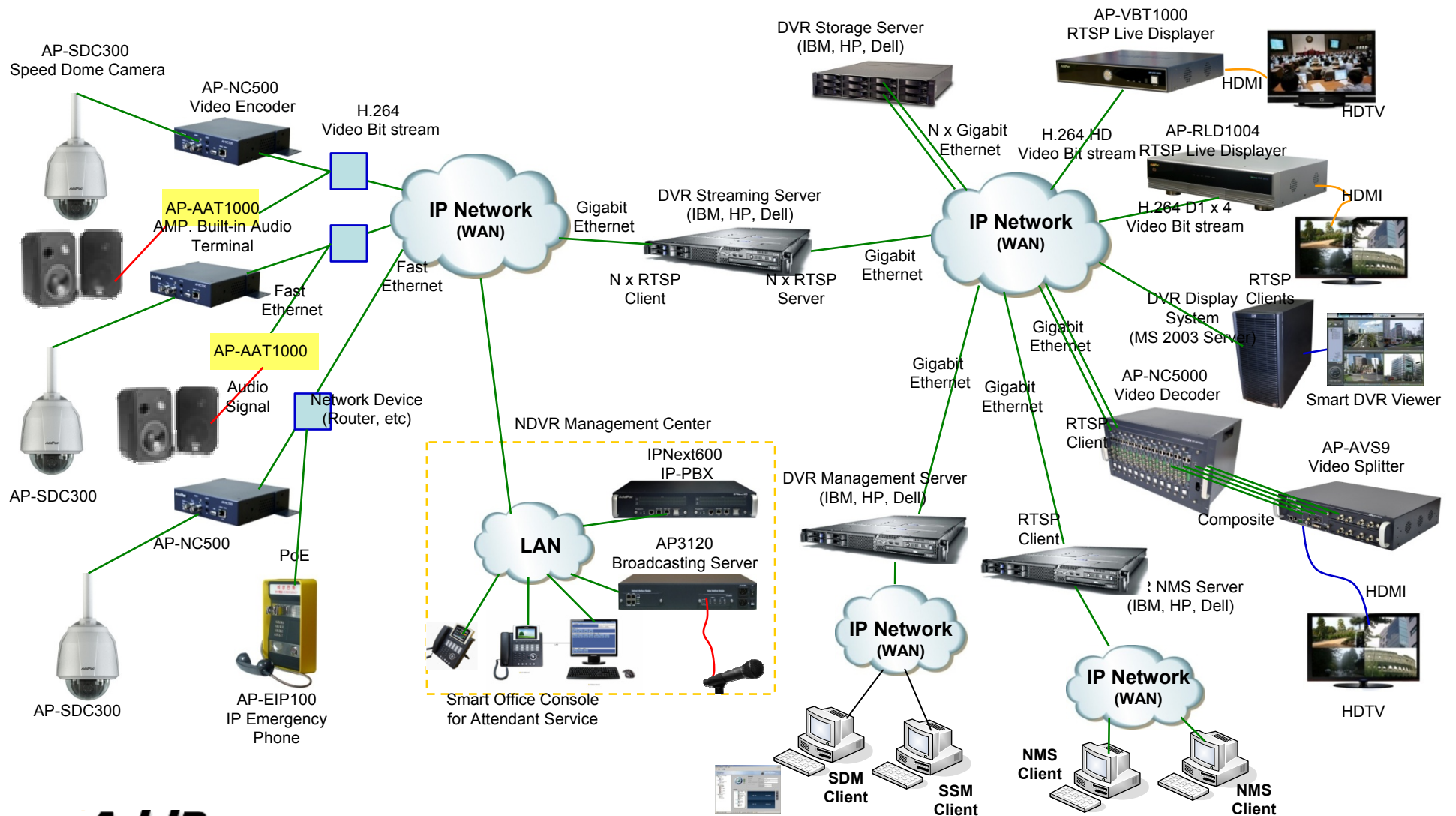


# Local Government CCTV Solution Component(D1)

# Contents

- AddPac Network DVR Service Diagram
- AddPac Network DVR Solution Components
  - Analog Speed Dome Camera for Outdoor App.
  - Video Codecs (H.264, RTSP)
  - Subtitle Generator (NTSC, PAL)
  - Digital AMP for External Speaker
  - Video Splitter
  - Video Signal Converter(NSTC/PAL, RGB, DVI, HDMI)
  - Live Video Displayers
  - IP Emergency Call Solution for NDVR
  - Audio Broadcasting Solution for Emergency
  - NDVR Streaming Server
  - NDVR Storage Server
  - NDVR Management Server
  - NMS (Network Management System) for NDVR Systems

# Network DVR Service Diagram





# Analog Speed Dome Camera for Outdoor Application

# Analog Speed Dome Camera

## AP-SDC300 Speed Dome Camera

### Main Features

- High-End Speed Dome Video Camera Features
- ¼ inch, Double Density Interline Transfer SONY CCD Image Sensor
- D1 (720x480)/30frame Video Resolution Support
- Speed PAN/TILT/Zoom Features
- Optional Housing Features for Outdoor Application
- Optical 37x Zoom, Digital 12 x Zoom Camera
- DNR (Digital Noise Reduction) Feature Support
- Day & Night (ICR) Feature Support
- Motion Detection Support
- NSTC : AP-SDC300N, PAL : AP-SDC300P

# Analog Speed Dome Camera

## AP-SDC300 Speed Dome Camera

### Camera Module Specifications



CCD	1/4" , Double Density Interline Transfer CCD Image Sensor
	Effective Pixels(NSTC) : 768(H) x 494(V) Effective Pixels (PAL): 752(H) x 582(V)
Pixel	410,000 Pixel
Optics	37x, f=3.5 to 129.5.0mm(F 1.6 to 3.9) 12x Digital Zoom (On/Off)
Scanning System	2:1 Interlace
Frequency	NTSC : 15.734KHz(H) / 59.94Hz (V) PAL : 15.625KHz(H) / 50.00Hz (V)
Resolution	550 TV Lines(Min.) : Color, 680TV Lines(Min.) : B/W
Min. illumination	Color : 0.7 Lux/F1.6 (50 IRE) B/W : 0.03 Lux/F1.6 (50 IRE), 0.03 Lux/256 = 0.0001171 Lux 256 is Shutter Speed.
S/N (Y Signal)	50dB
Focus	Auto/Manual/One-Push
Zoom Speed	2.5 Sec(Fast)/3.1Sec(Middle)/5.6Sec(Slow)
IRIS Control	Auto/Manual
Day & Night	Auto /Color/BW/Ext
White Balance	ATW/AWC/MANUAL/INDOOR/OUTDOOR
Backlight	WDR/BLC/HLC/OFF
Motion Detection	ON/OFF (Output via communication)
Preset	128 Positions
Electronic Shutter Speed	Auto/Manual/A.FLK X256 ~ 1/120,000

**AddPac**

[www.addpac.com](http://www.addpac.com)

# Analog Speed Dome Camera

AP-SDC300 Speed Dome Camera

## Hardware Specification



37x Optical Zoom Camera  
Module

**AddPac**

[www.addpac.com](http://www.addpac.com)





# Video Codecs

# Video Codec

## AP-NC500 Video Codec

### Main Features

- IP based Audio/Video Encoding/Decoding Solution
- Various Video Codec Support : H.264, MPEG4
- Up to D1 Video Resolution
- RTSP, TCP/UDP Protocol Support
- IP based Network Surveillance Solution
- High-performance Video, Audio, and Voice Service
- Firmware Upgradeable Architecture
- Video Solution with Outstanding Network Service Capability
- Audio/Video Privacy Protection
- External DC Power Supply Adaptor
- Compact Chassis

# Video Codec

## AP-NC500 Video Codec

### Hardware Specification

### AP-NC500 Front View



Video In/Out Port



Power On/Off Switch

[www.addpac.com](http://www.addpac.com)

DC Power Supply

2 Alarm Input, 1 Relay Out

RS-232C, RS422 Interface

# Video Codec

## AP-NC1200 Video Codec

### Main Features

- IP based Audio/Video Encoding/Decoding Solution
- Various Video Codec Support : H.264
- One(1) Module 2-Card Slot for Video/Audio Codec Modules
- Up to D1 Video Resolution
- RTSP, TCP/UDP Protocol Support
- IP based Network Surveillance Solution
- High-performance Video, Audio, and Voice Service
- Firmware Upgradeable Architecture
- Video Solution with Outstanding Network Service Capability
- Audio/Video Privacy Protection
- External DC Power Supply Adaptor
- Compact Chassis

# Video Codec

AP-NC1200 Video Codec

High-end  
**DSP**

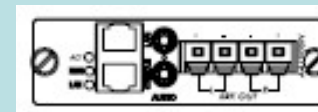
## AP-NC1200 Video Codec Modules

AV1500N D1 Video Encoder Module  
(H.264 D1, CIF Dual Encoding)



## AP-NC1200 Audio Codec Modules

AA1000N AMP built-in Audio Broadcasting  
Module (G.711, G.726, etc)



# Video Codec

AP-NC1200 Video Codec

High-end  
**DSP**

## AP-NC1200 Subtitle Generator Modules

AS1000N Analog Subtitle Generator Module



# Video Codec

## AP-NC1200 Video Codec

### Hardware Specification

### AP-NC1200 Front Side View



AP-AV1500N Module  
Dual Channel D1 Encoder Module

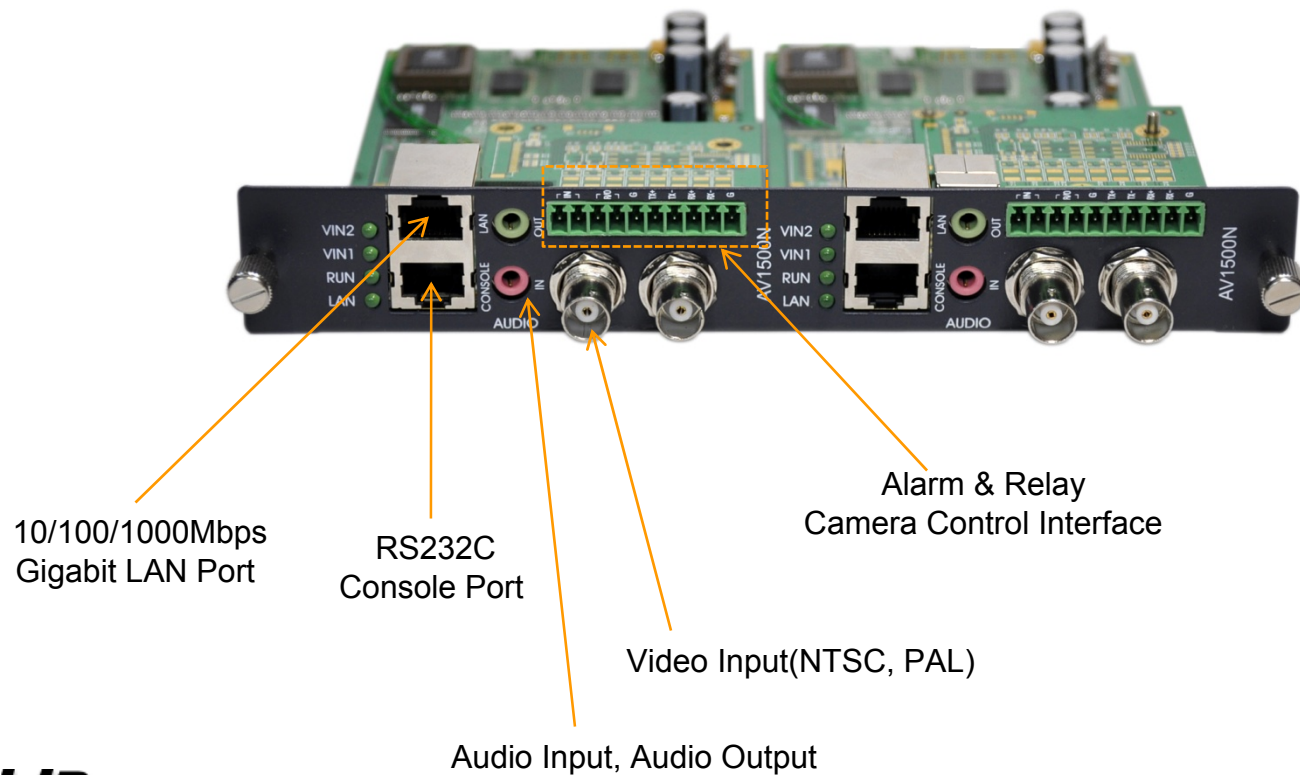
AP-AA1000N  
AMP Built-in Audio Broadcasting  
Module

# Video Codec

## AP-NC1200 Video Codec

### Hardware Specification

Two(2) AP-AV1500N Dual Channel D1 Video Encoder Module



10/100/1000Mbps  
Gigabit LAN Port

RS232C  
Console Port

Video Input(NTSC, PAL)

Audio Input, Audio Output

Alarm & Relay  
Camera Control Interface



# Video Codec

## AP-NC1500 Video Codec

### Main Features

- IP based Audio/Video Encoding/Decoding Solution
- Various Video Codec Support : H.264
- Two(2) Module 4-Card Slot for Video/Audio Codec Modules
- Up to D1 Video Resolution
- RTSP, TCP/UDP Protocol Support
- IP based Network Surveillance Solution
- High-performance Video, Audio, and Voice Service
- Firmware Upgradeable Architecture
- Video Solution with Outstanding Network Service Capability
- Audio/Video Privacy Protection
- Internal Power Module
- Compact Chassis

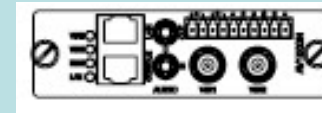
# Video Codec

AP-NC1500 Video Codec

High-end  
**DSP**

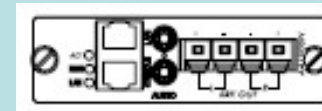
## AP-NC1500 Video Codec Modules

AV1500N D1 Video Encoder Module  
(H.264 D1, CIF Dual Encoding)



## AP-NC1500 Audio Codec Modules

AA1000N AMP built-in Audio Broadcasting  
Module  
(G.711, G.726, etc)



# Video Codec

AP-NC1500 Video Codec

High-end  
**DSP**

## AP-NC1500 Subtitle Generator Modules

AS1000N Analog Subtitle Generator Module



# Video Codec

## AP-NC1500 Video Codec

### Hardware Specification

AP-NC1500 Front Side View



AP-AV1500N Module  
Dual Channel D1 Encoder Module

AP-AA1000N  
AMP Built-in Audio Broadcasting  
Module

AP-NC1500 Back Side View



# Video Codec

## AP-NC2000D Video Codec

### Main Features

- IP based Audio/Video Encoding/Decoding Solution
- Single Slot for Video Modules
- Various Video Codec Modules Support
- H.264 Video Codec : D1 Module(D1, CIF Dual Encoding)
- RTSP, TCP/UDP Protocol Support
- IP based Network Surveillance Solution
- High-performance Video, Audio, and Voice Service
- Firmware Upgradeable Architecture
- Video Solution with Outstanding Network Service Capability
- Audio/Video Privacy Protection
- External DC Power Supply Adaptor
- Compact Chassis

# Video Codec

## AP-NC2000D Video Codec

### Hardware Specification

AP-NC2000D Front View



AV2000 D1 Video Module



Power On/Off Switch

DC Power Supply

# Video Codec

AP-NC2000D Video Codec

High-end  
**DSP**

## AP-NC2000D Video Codec Modules

AV5000E HD Video Encoder Module  
(H.264 720P, D1 Dual Encoding)



AV5000D HD Video Decoder Module



AV3000 HD Video Encoder/Decoder Module  
(H.264 720P, D1 Dual Encoding)



AV2000 D1 Video Encoder/Decoder Module  
(H.264 D1, CIF Dual Encoding)



# Video Codec

AP-NC2000D Video Codec

High-end  
**DSP**

## AP-NC2000D Video Codec Modules

AV1800 D1 Video Decoder Module  
(H.264/MPEG4 D1 Decoding)





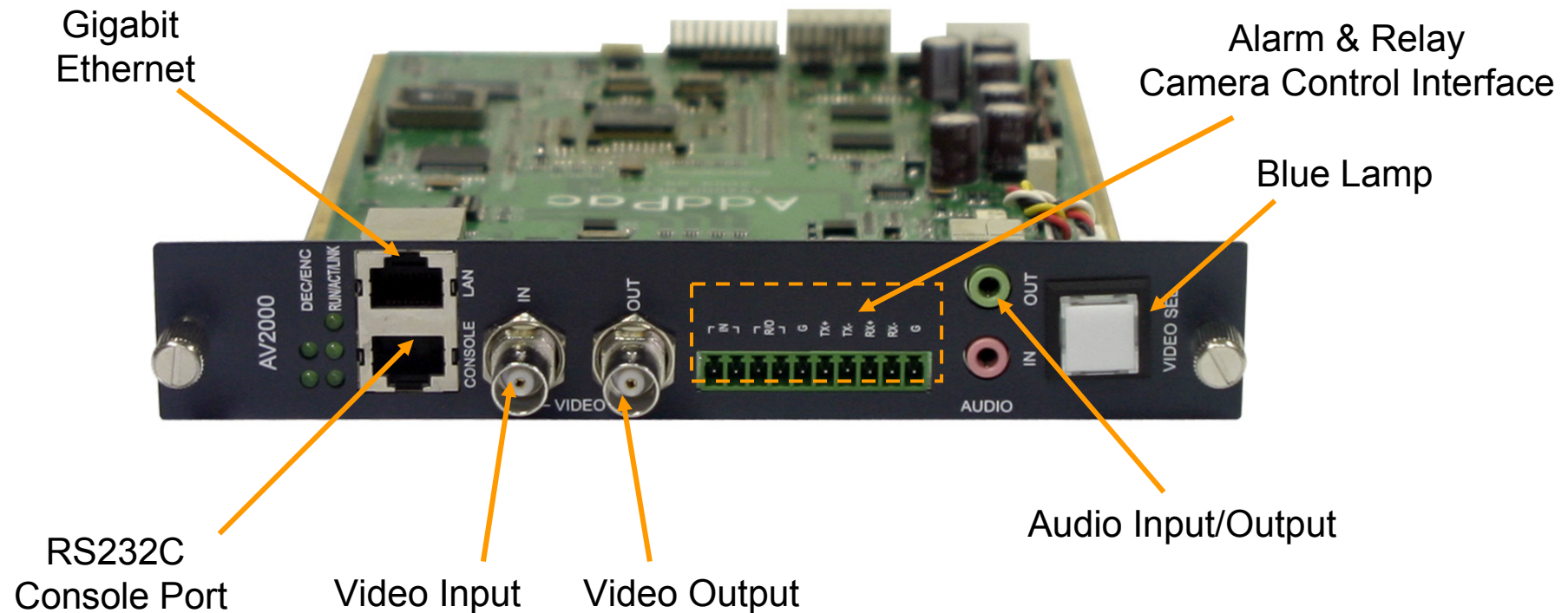
# Video Codec

AP-NC2000D HD Video Codec

High-end  
**DSP**

## Hardware Module Specification

AV2000 D1 Video Encoder/Decoder Module (H.264)



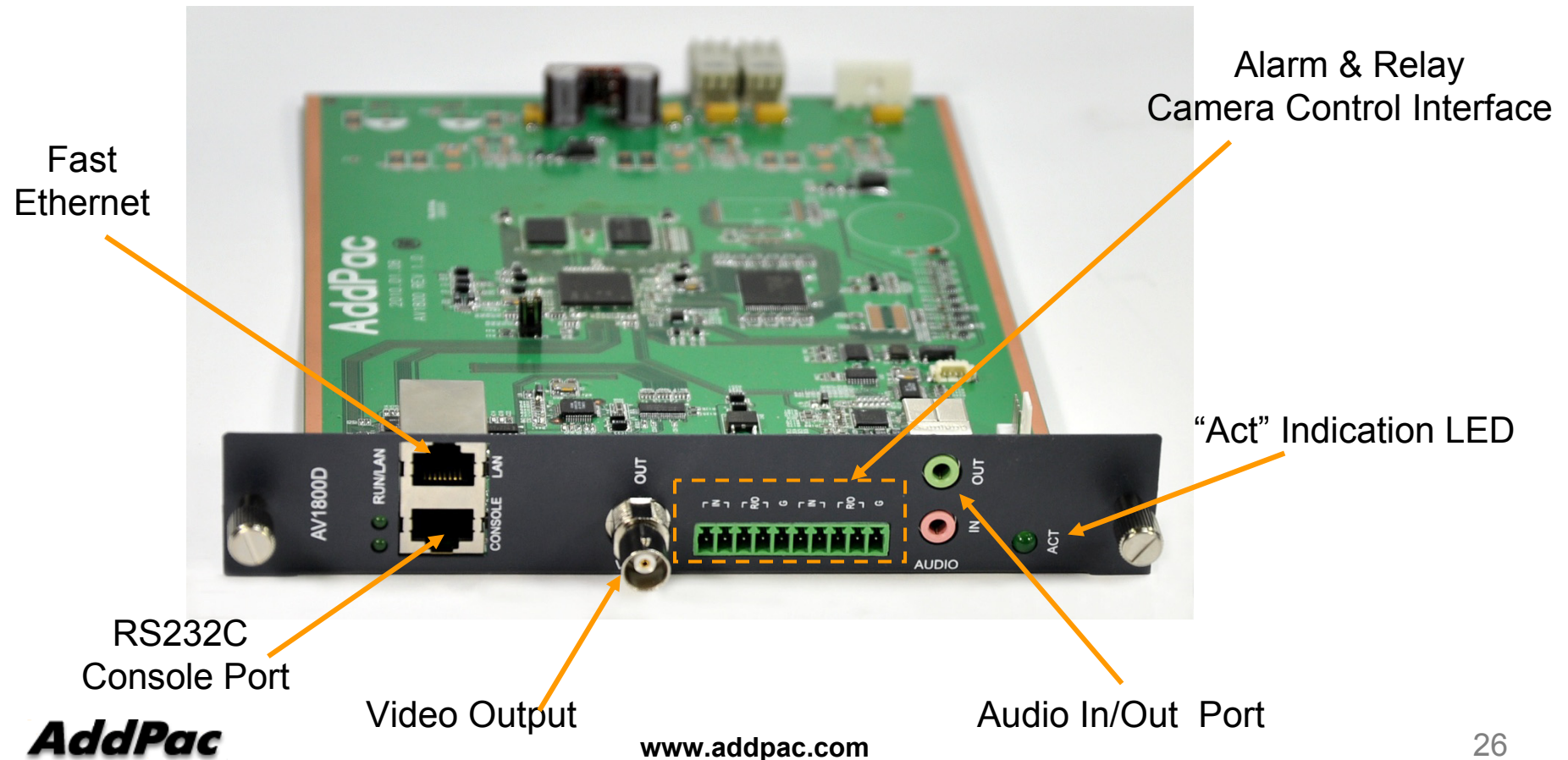
# Video Codec

AP-NC2000D HD Video Codec

High-end  
**DSP**

## Hardware Module Specification

AV1800 Video Decoder Module  
(H.264, MPEG4, Up to D1 Resolution)



**AddPac**

[www.addpac.com](http://www.addpac.com)

# Video Codec

## AP-NC2000 Video Codec

### Main Features

- IP based Audio/Video Encoding/Decoding Solution
- Single Slot for Video Modules
- Various Video Codec Modules Support
- H.264 Video Codec : D1 Module(D1, CIF Dual Encoding)
- RTSP, TCP/UDP Protocol Support
- IP based Network Surveillance Solution
- High-performance Video, Audio, and Voice Service
- Firmware Upgradeable Architecture
- Video Solution with Outstanding Network Service Capability
- Audio/Video Privacy Protection
- **Internal Power Supply**
- Compact Chassis

# Video Codec

## AP-NC2000 HD Video Codec

### Hardware Specification



AV2000 D1 Video Module

AP-NC2000 Front View



Power On/Off Switch

AC Power Supply

# Video Codec

## AP-NC3000 Video Codec

### Main Features

- IP based Audio/Video Encoding/Decoding Solution
- Two(2) Slot for Video Modules
- Various Video Codec Modules Support
- H.264 Video Codec : D1 Module (D1, CIF Dual Encoding)
- RTSP, TCP/UDP Protocol Support
- IP based Network Surveillance Solution
- High-performance Video, Audio, and Voice Service
- Firmware Upgradeable Architecture
- Video Solution with Outstanding Network Service Capability
- Audio/Video Privacy Protection
- Internal Power Supply
- 19 Inch Rack Mountable

# Video Codec

## AP-NC3000 Video Codec

### Hardware Specification



AV2000 D1 Video Module

AS2000 Analog Subtitle Generator Module

AP-NC3000 Front View



AC Power Supply

Power On/Off Switch

# Video Codec

## AP-NC3000 Video Codec

### AP-NC3000 Video Codec Modules

AV5000E HD Video Encoder Module  
(H.264 720P, D1 Dual Encoding)



AV5000D HD Video Decoder Module



AV3000 HD Video Encoder/Decoder Module  
(H.264 720P, D1 Dual Encoding)



AV2000 D1 Video Encoder/Decoder Module  
(H.264 D1, CIF Dual Encoding)



# HD Video Codec (HD-SDI)

AP-NC3000 HD Video Codec

## AP-NC3000 Subtitle Generator Modules

HS3000 HD-SDI Subtitle Generator Module



AS2000 Analog Subtitle Generator Module





# Video Codec

## AP-NC5000 Video Codec

### Main Features

- IP based Audio/Video Encoding/Decoding Solution
- Twelve(12) Slot for Video Modules
- Various Video Codec Modules Support
- H.264 Video Codec : D1 Module (D1, CIF Dual Encoding)
- RTSP, TCP/UDP Protocol Support
- IP based Network Surveillance Solution
- High-performance Video, Audio, and Voice Service
- Firmware Upgradeable Architecture
- Video Solution with Outstanding Network Service Capability
- Audio/Video Privacy Protection
- Module Type Power Supply

# Video Codec

## AP-NC5000 Video Codec

### AP-NC5000 Video Codec Modules

AV5000D HD Video Decoder Module



AV3000 HD Video Encoder/Decoder Module  
(H.264 720P, D1 Dual Encoding)



AV2000 D1 Video Encoder/Decoder Module  
(H.264 D1, CIF Dual Encoding)



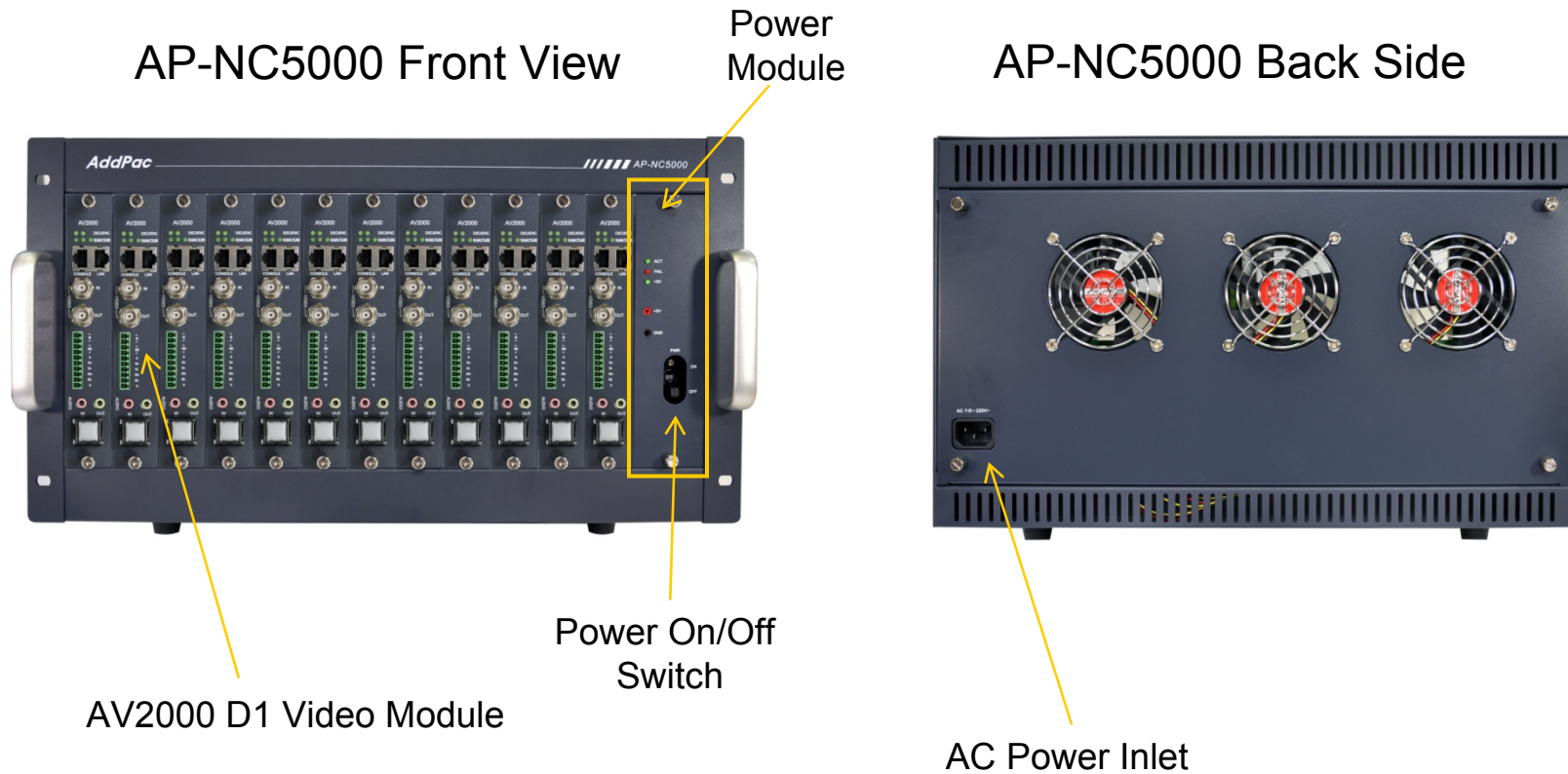
AV1800 D1 Video Decoder Module  
(H.264/MPEG4 D1 Decoding)



# Video Codec

## AP-NC5000 Video Codec

### Hardware Specification



# Video Codec

## AP-NC5000 HD Video Codec

### Hardware Specification

AP-NC5000 Front View



AV1800D Video Decoder Module (H.264/MPEG4, Up to D1)



# Subtitle Generator

# Subtitle Generator

AP-SG1000 Subtitle Generator

## Main Features

- Subtitle Generation Service Features
- XML based Subtitle Controller Software (MS-Window)
- Single Slot for Subtitle Modules (HD-SDI, Analog)
- IP based Network Surveillance Solution
- High-performance Video, Audio, and Voice Service
- Firmware Upgradeable Architecture
- Video Solution with Outstanding Network Service Capability
- Audio/Video Privacy Protection
- Compact Chassis

# Subtitle Generator

AP-SG1000 Subtitle Generator

## Subtitle Generator Service Features

- Display Object at specific position(Character, Figure, Diagram, Bitmap)
- Character Object : Color, Font Size, Font, Boundary Color, Box, Box Color, Position, etc
- Character Scrolling Service
- Variable Subtitle Service by PTZ Position Information
- Erase Object within specific area
- Erase All Object
- Status Information Service (S/W Version, Flash Size, etc)
- Network Configuration

# Subtitle Generator

AP-SG1000 Subtitle Generator

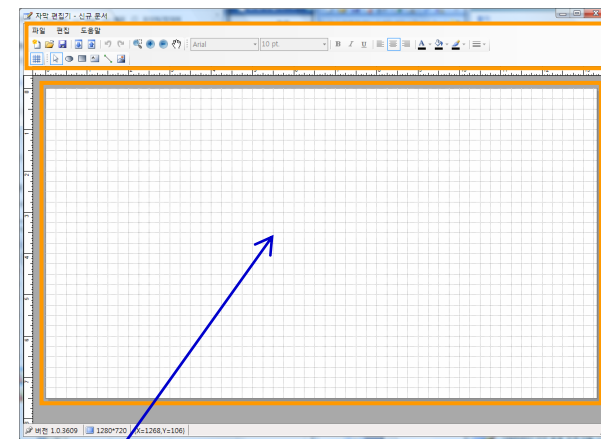
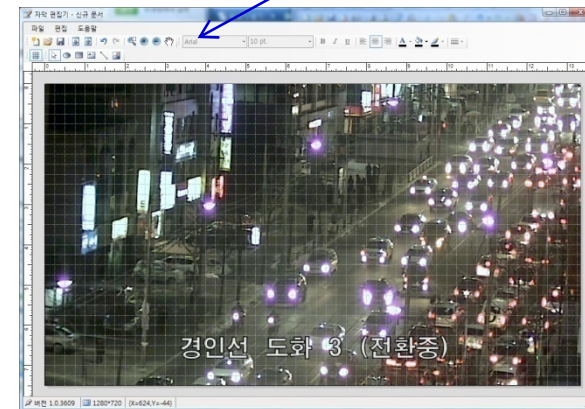
## Subtitle Generator Service Features

- Subtitle Generation Management
  - Open, Save
  - Import, Export
- Subtitle Generation Edit
  - Polygon (ellipse, rectangle)
  - Line
  - Image
  - Text
- Subtitle Generation Option
  - Font (Font, Size, Style, Align, Color)
  - Style (BackColor, LineColor, Line style)
- Miscellaneous
  - Background image
  - Screen size
  - Zoom (+, -)
  - Undo, Redo, Copy, Paste, Cut

**AddPac**

www.addpac.com

Program Tool Area for SG Editing



SG Editing Layout Area



# Subtitle Generator

## AP-SG1000 Subtitle Generator

### Hardware Specification



AS2000 Analog Subtitle Generator Module

AP-SG1000 Front View



Power On/Off Switch

AC Power Supply

# Subtitle Generator

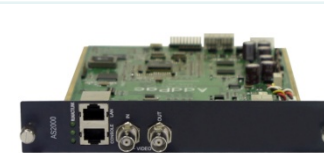
AP-SG1000 Subtitle Generator

## Hardware Specification

HS3000 HD-SDI Subtitle Generator Module



AS2000 Analog Subtitle Generator Module

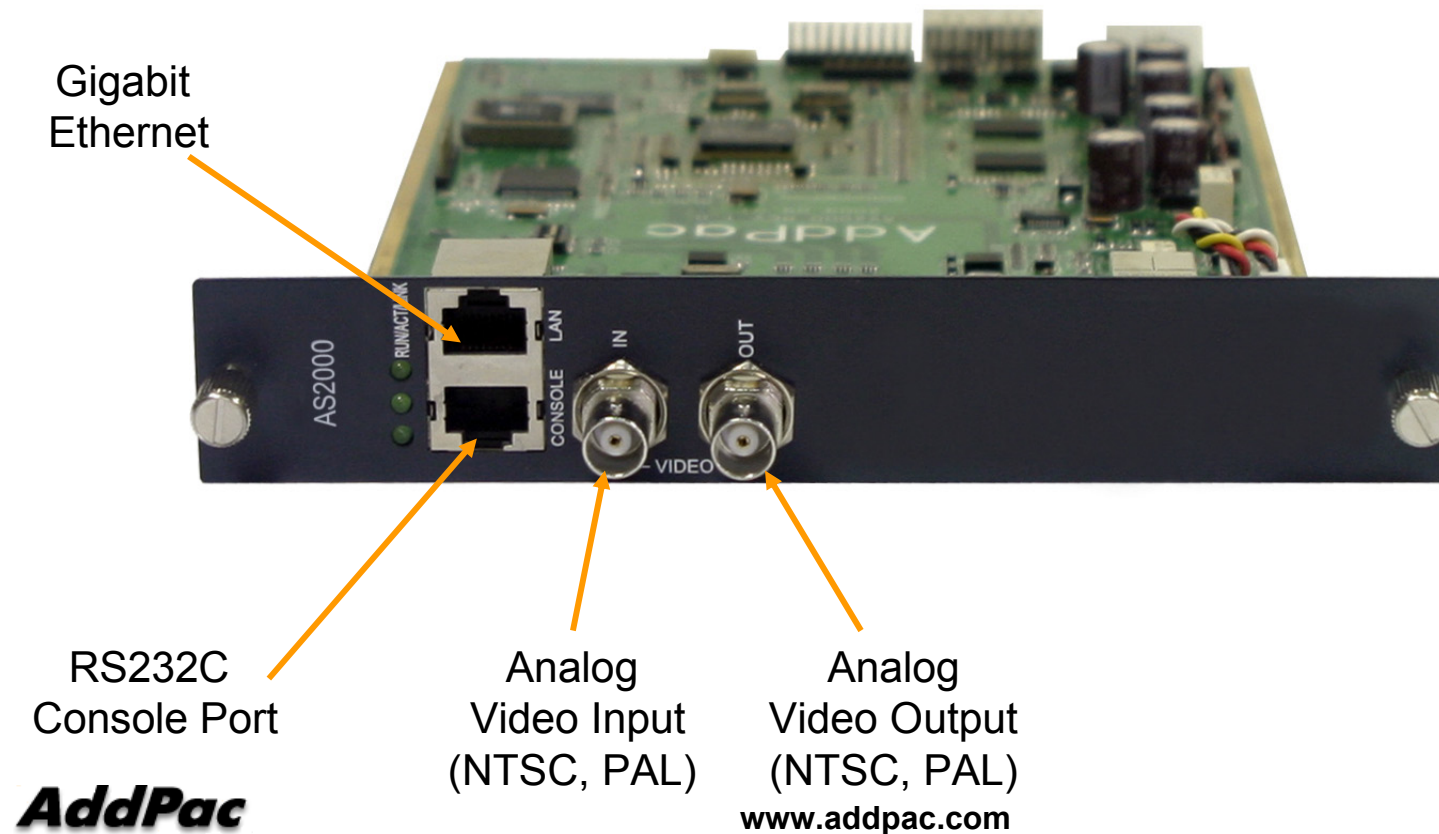


# AS2000 Module (Analog)

AP-SG1000 Subtitle Generator

High-end  
**DSP**

## AS2000 Analog Subtitle Generation Module Specification



**AddPac**



# Video Splitter

# Analog Video Splitter

## AP-AVS9 Video Splitter

### Main Features

- Video Splitting Service Features
  - Various View Mode Layout (9ch, 4ch, 1ch, etc)
- Nine(9) Channel Analog Video Signal Input (NSTC, PAL)
- Analog Video Signal Loop-Out
- One(1) Channel HDMI Output for HDTV Display (Full HD, Upscaling)
- IP based Network Surveillance Solution
- High-performance Video, Audio, and Voice Service
- Web based Management
- Firmware Upgradeable Architecture
- Video Solution with Outstanding Network Service Capability
- Internal Power Supply Adaptor



# Video Signal Converter

# Video Signal Converter

## AP-VSC1000 Video Signal Converter

### Main Features

- Video Signal Converting Service Features
- Analog Video Signal Input or Output Port
- RGB 15 Pin VGA Signal Output Port
- HD-SDI Input Port
- HD-SDI Output Port
- One(1) Channel HDMI Output for HDTV Display (Full HD, Upscaling)
- IP based Network Surveillance Solution
- High-performance Video, Audio, and Voice Service
- Firmware Upgradeable Architecture
- Video Solution with Outstanding Network Service Capability
- Internal Power Supply Adaptor

# Video Signal Converter

## AP-VSC1000 Video Signal Converter

### Video In/Out Signal Converting Matrix

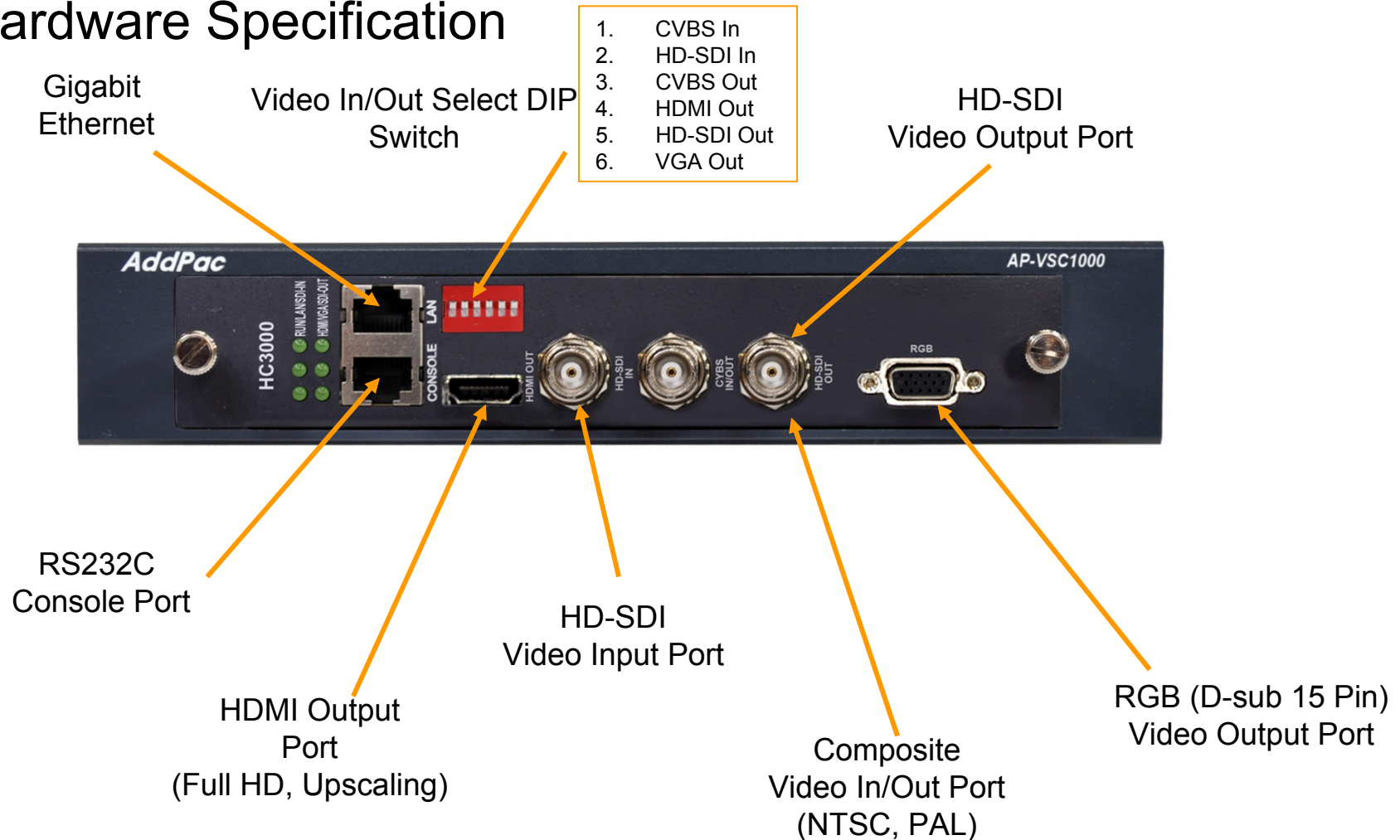
Video Input	Video Output		
Analog Composite Video Input (BNC Connector, NSTC/PAL)	Upscaling	Upscaling	-
	HD-SDI Output (720P,1080i)	HDMI Output (720P, 1080i) 1024x768 for DVI Monitor	RGB Output (VGA)
HD-SDI Video Input (720P, 1080i)	Downscaling	Upscaling	Downscaling
	Analog Video Output (NTSC,PAL)	HDMI Output (720P, 1080i) 1024x768 for DVI Monitor	RGB Output (VGA)



# Video Signal Converter

## AP-VSC1000 Video Signal Converter

### Hardware Specification





# Live Video Displayers

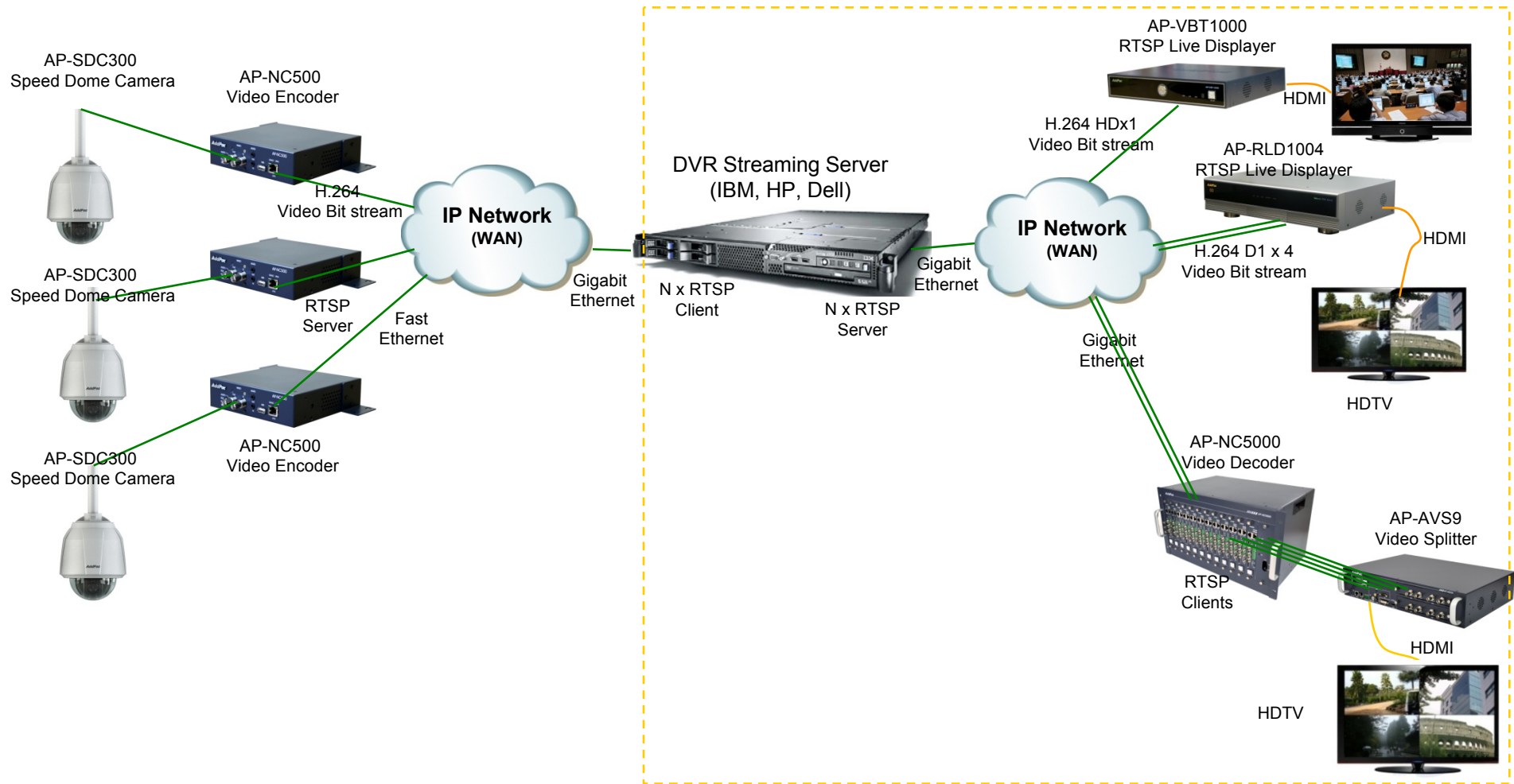
# RTSP based Video Displayers

## Contents

- Network Diagram
- RTSP based Live Video Displayer
  - AP-VBT1000 Live Video Displayer
  - AP-RLD1004 Live Video Displayer

	<b>AP-VBT1000</b>	<b>AP-RLD1004</b>
Codec	H.264, MPEG4	H.264, MPEG4
Protocol	RTSP/RTP TCP/UDP	RTSP/RTP TCP/UDP
Performance	HD : 1Channel D1 : 1Channel	HD : 1 Channel D1 : 4/9 Channel
Display	HDMI, Full HD	HDMI, Full HD

# RTSP based Video Displayers Network Diagram



# RTSP based Live Video Displayer

AP-VBT1000 Live Video Displayer

## Main Features

- IP based Audio/Video Decoding Solution
- H.264, MPEG4 Single Channel Video Decoding
- RTSP based Network Surveillance Solution
- RTSP/RTP (TCP/UDP) Protocol Support
- H.264 BP/MP/HP HD(720P), D1 Video Resolution Support
- Full HD Live Display Support for HDTV Display via HDMI
- High-performance Video, Audio, and Voice Service
- Firmware Upgradeable Architecture
- Video Solution with Outstanding Network Service Capability
- Remote Controller Support
- Compact Chassis



# RTSP based Live Video Displayer

AP-VBT1000 Live Video Displayer

High-end  
Video  
Processor

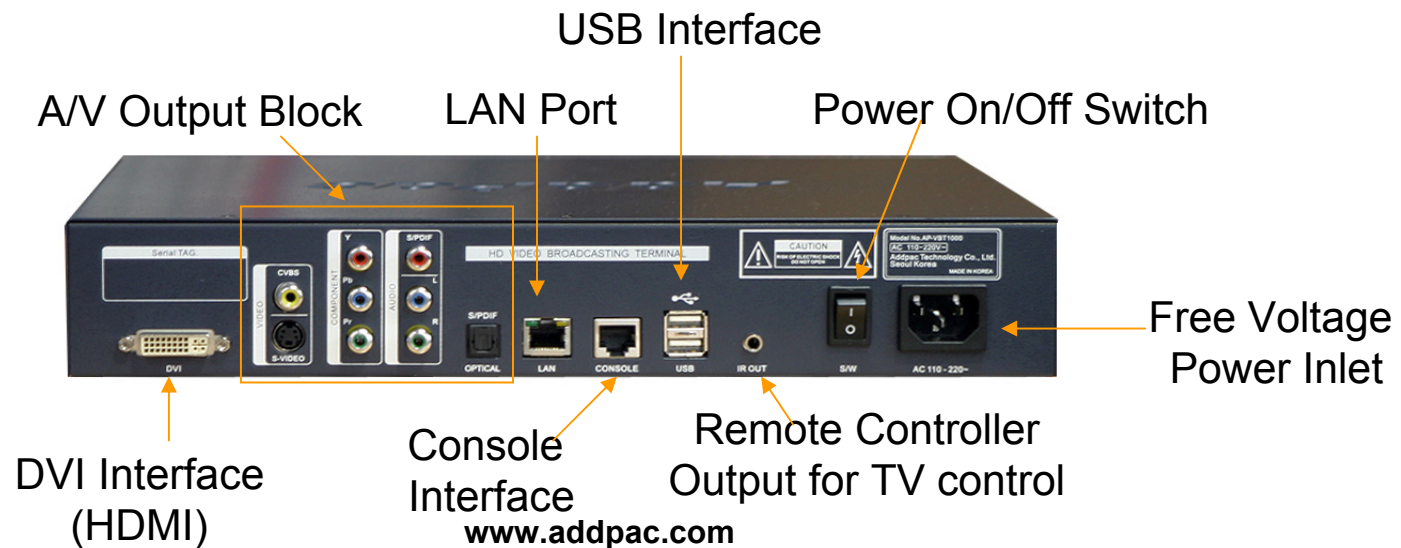
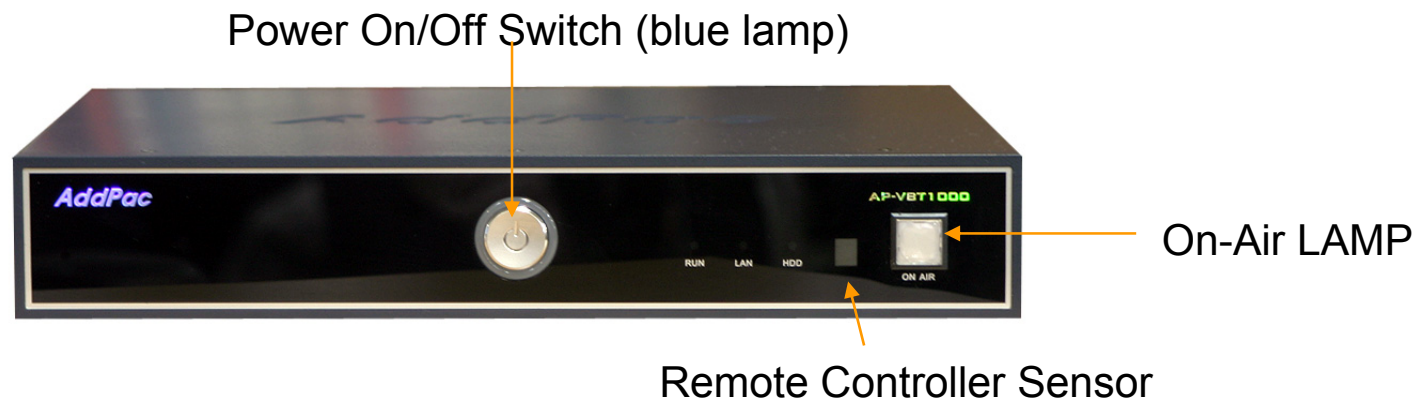
## Hardware Specification

- High-End Audio/Video Processor
- Main Chassis
  - Power On/Off Switch (Front Panel)
  - Remote Controller Sensor (Front Panel)
  - On-AIR Indication LAMP (Front Panel)
  - Network Interface
    - Two(2) 10/100Mbps Fast Ethernet
    - Two(2) USB 2.0 Interface
    - One(1) RS-232C Console (RJ45)
    - IR-Out Interface for External TV Control
  - Powerful Video Interface
    - S-Video, Component Output, DVI Interface(HDMI)
  - High quality Audio and Voice Interface
    - Stereo Audio Output Connector
    - S/PDIF RCA Interface
    - S/PDIF Optical Interface

# RTSP based Live Video Displayer

AP-VBT1000 Live Video Displayer

## Hardware Specification



# RTSP based Live Video Displayer

AP-RLD1004 Live Video Displayer

## Main Features

- IP based Audio/Video Decoding Solution
- H.264, MPEG4 Video Decoding
- RTSP based Network Surveillance Solution
- RTSP/RTP (TCP/UDP) Protocol Support
- H.264 BP/MP/HP HD(720P), D1 Video Resolution Support
- Full HD Live Display Support for HDTV Display via HDMI
- HD : One(1) Channel, D1 : Up to Four(4) Channel Decoding
- High-performance Video, Audio, and Voice Service
- Firmware Upgradeable Architecture
- Video Solution with Outstanding Network Service Capability
- Remote Controller Support
- Compact Chassis





# RTSP based Live Video Displayer

AP-RLD1004 Live Video Displayer

High-end  
Video  
Processor

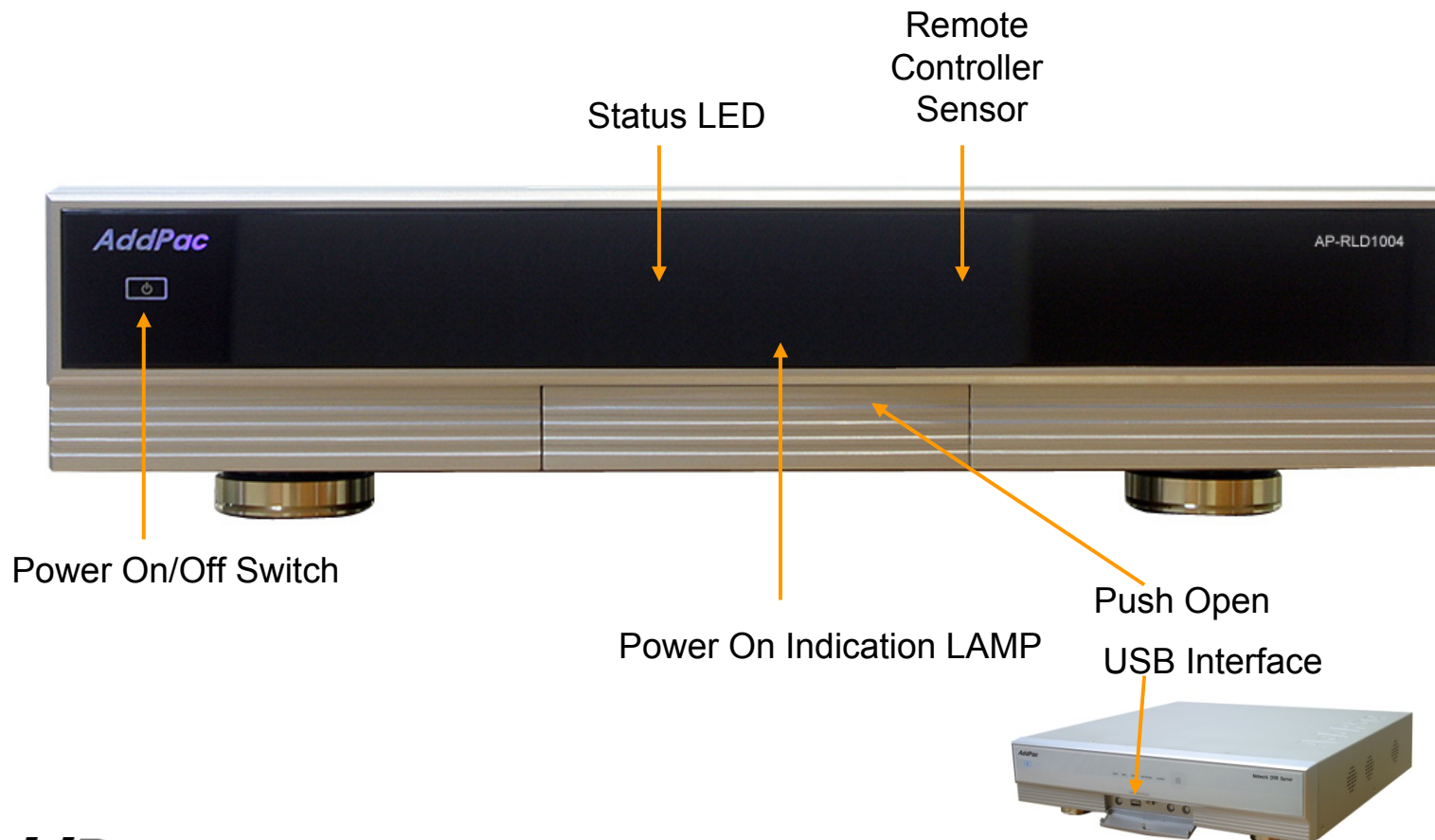
## Hardware Specification

- RISC Microprocessor + Video Processor Computing Power
- Main Chassis
  - Network Interface
    - One(1) 10/100/1000Mbps Gigabit Ethernet
  - Video Interface
    - Composite/S-video Video Output
    - DVI (HDMI) Video Output
    - Component Video Output for HDTV(720P)
  - Audio Interface
    - One(1) Audio 3.5mm Stereo Input Channel
    - Two(2) Audio RCA Output Channel (Left, Right)
  - Two(2) USB Host Mode Interface for Mouse (Front, Back), etc

# RTSP based Live Video Displayer

AP-RLD1004 Live Video Displayer

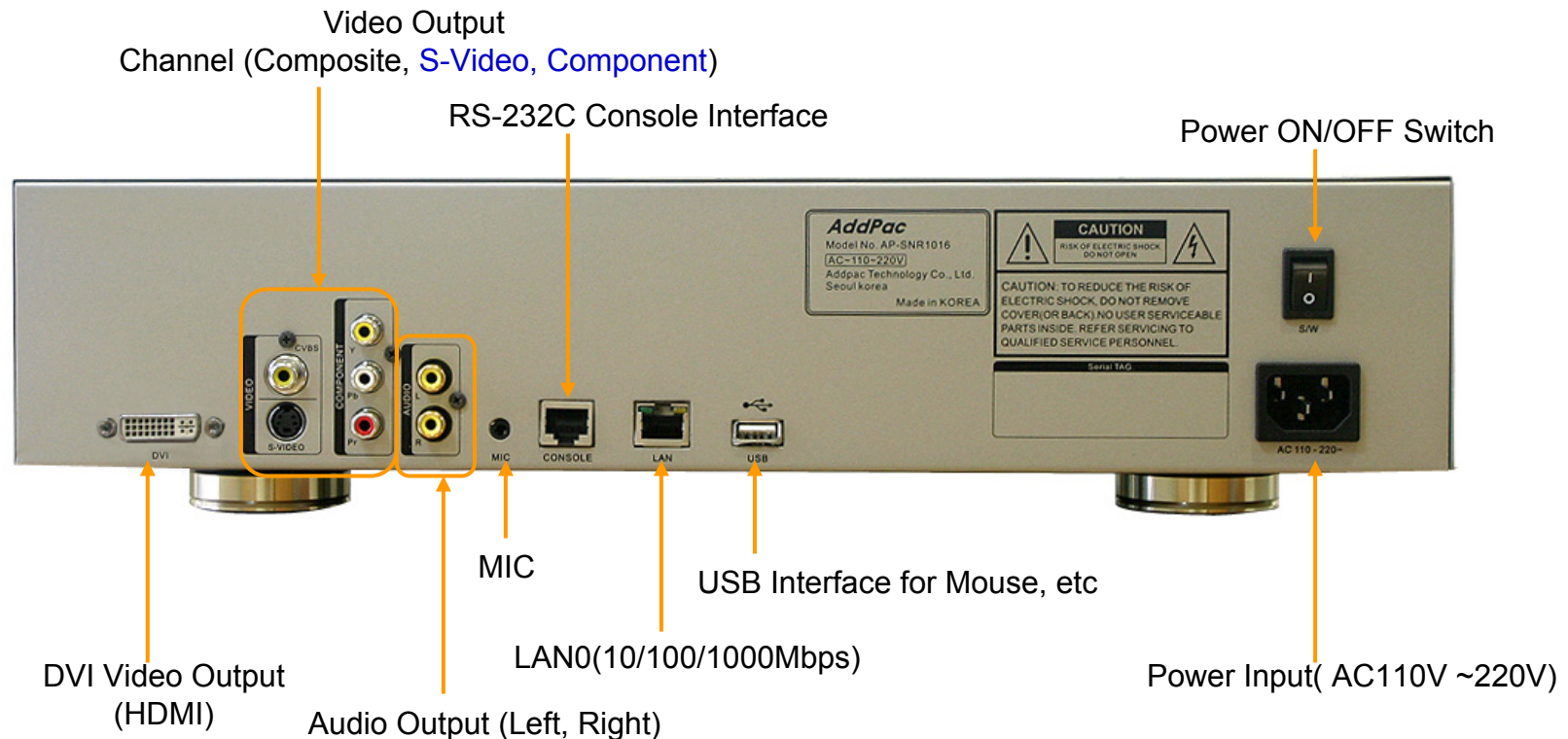
## Hardware Specification



# RTSP based Live Video Displayer

AP-RLD1004 Live Video Displayer

## Hardware Specification





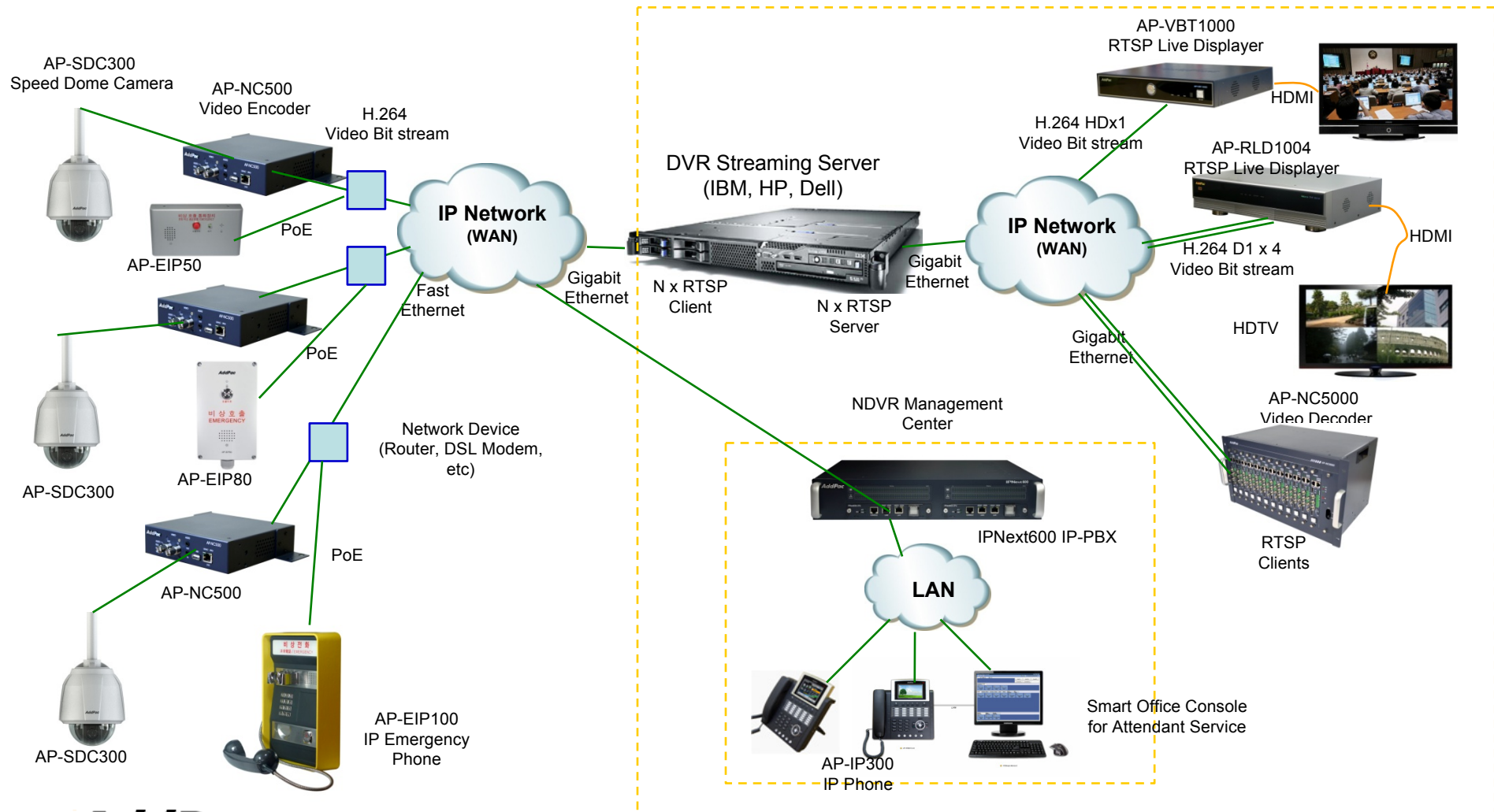
# IP Emergency Call Solution for NDVR

# IP Emergency Call Solution




## Contents

- Network Diagram
- IP Emergency Call Solution for NDVR
  - AP-EIP50 IP Phone for Indoor Emergency Call
  - AP-EIP80 IP Phone for Outdoor Emergency Call
  - AP-EIP100 IP Phone for Indoor Emergency Call
  - IPNext Next Generation IP-PBX Series (example : IPNext600,etc)
  - AP-IP300 IP Phone for Emergency Call Attendant
  - Smart Office Console Software for Emergency Call Attendant
  - AP-NR500 Emergency Call Voice Recoding Server

# IP Emergency Call Network Diagram



# IP Phones for Emergency Call

	<b>AP-EIP50</b>	<b>AP-EIP80</b>	<b>AP-EIP100</b>
<b>Model</b>			
Voice Codec	G.711,G.729,G.723.1	G.711,G.729,G.723.1	G.711,G.729,G.723.1
Duplex	Full Duplex	Full Duplex	Full Duplex
AEC	Support	Support	Support
Handset	N/A (MIC & Speaker)	N/A (MIC & Speaker)	Support
Protocol	SIP Protocol	SIP Protocol	SIP Protocol
Power Supply	PoE (Power over Ethernet)	PoE (Power over Ethernet)	PoE (Power over Ethernet)
Application	Indoor Application	Outdoor Application (Water Proof, etc)	Indoor Application

# Next Generation IP-PBX for Attendant Service

## IPNext600 NGN IP-PBX

### Main Features

- SIP Application Server, Proxy, Registrar and Location Server
- Multiple ITSP Trunk with SIP & H.323 Accounts Support
- Dual System Redundancy Architecture
  - Two(2) Fast Ethernet Interface / System
- High Performance RISC Architecture
- Powerful Network Protocols (PPPoE, DHCP, Static Routing, etc)
- IPv4/IPv6 Dual Stack
- RTP Proxy Function Embedded for Private IP and IPv6 Address Interworking
- User Presence Service Features for Smart Multimedia Messenger and Smart IP Phone
- IVR Scenario Editor, Voice Mail, Media Service (Coloring), Conference
- Firmware Upgradeable Architecture
- Smart Multimedia Manager for IP-PBX Management
- Smart Messenger Service (click to dial) for Unified Communication
- VPMS (VoIP Plug&Play Management System) & Smart NMS for Large Scale Deployment
- Advanced Voice QoS Mechanism
- Dual Redundancy Power Module

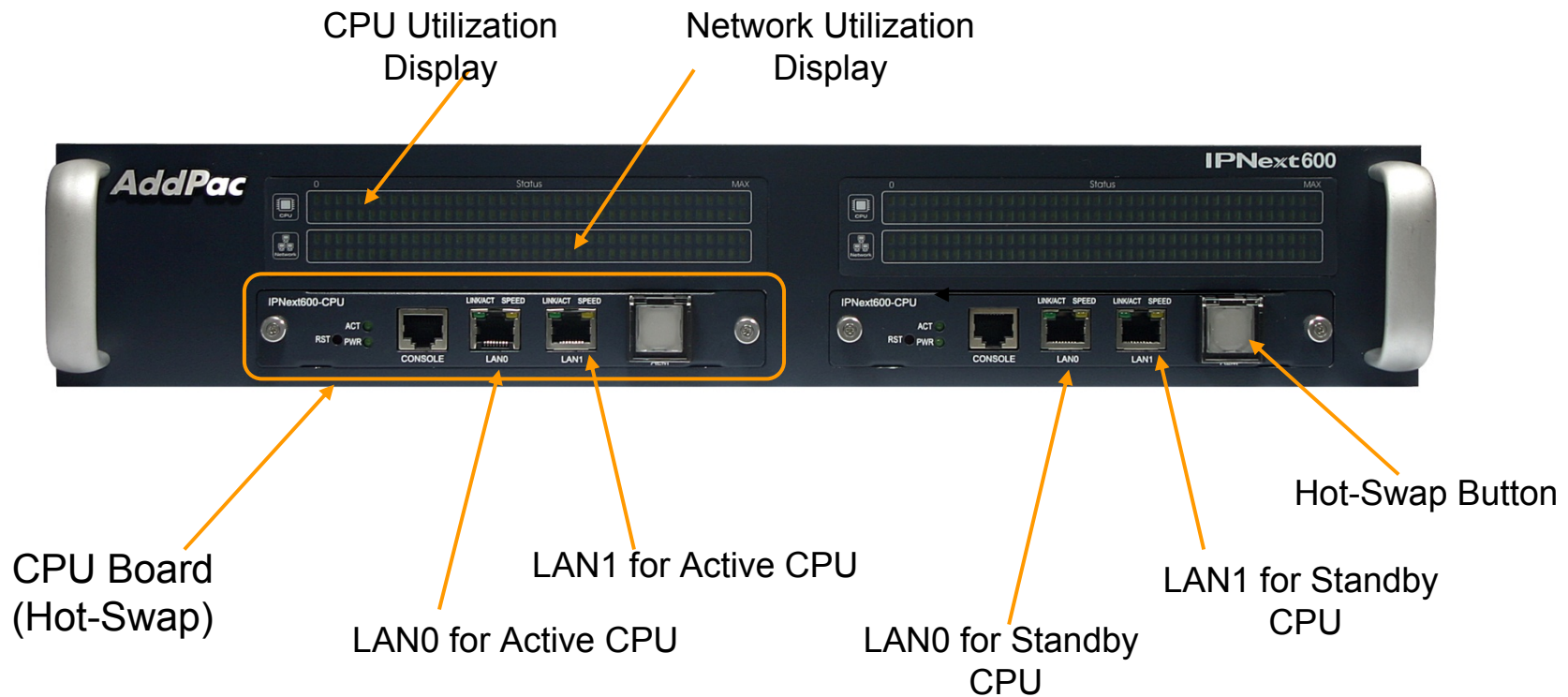


# Next Generation IP-PBX for Attendant Service

## IPNext600 NGN IP-PBX

### Hardware Specification

### IPNext 600 Front Side

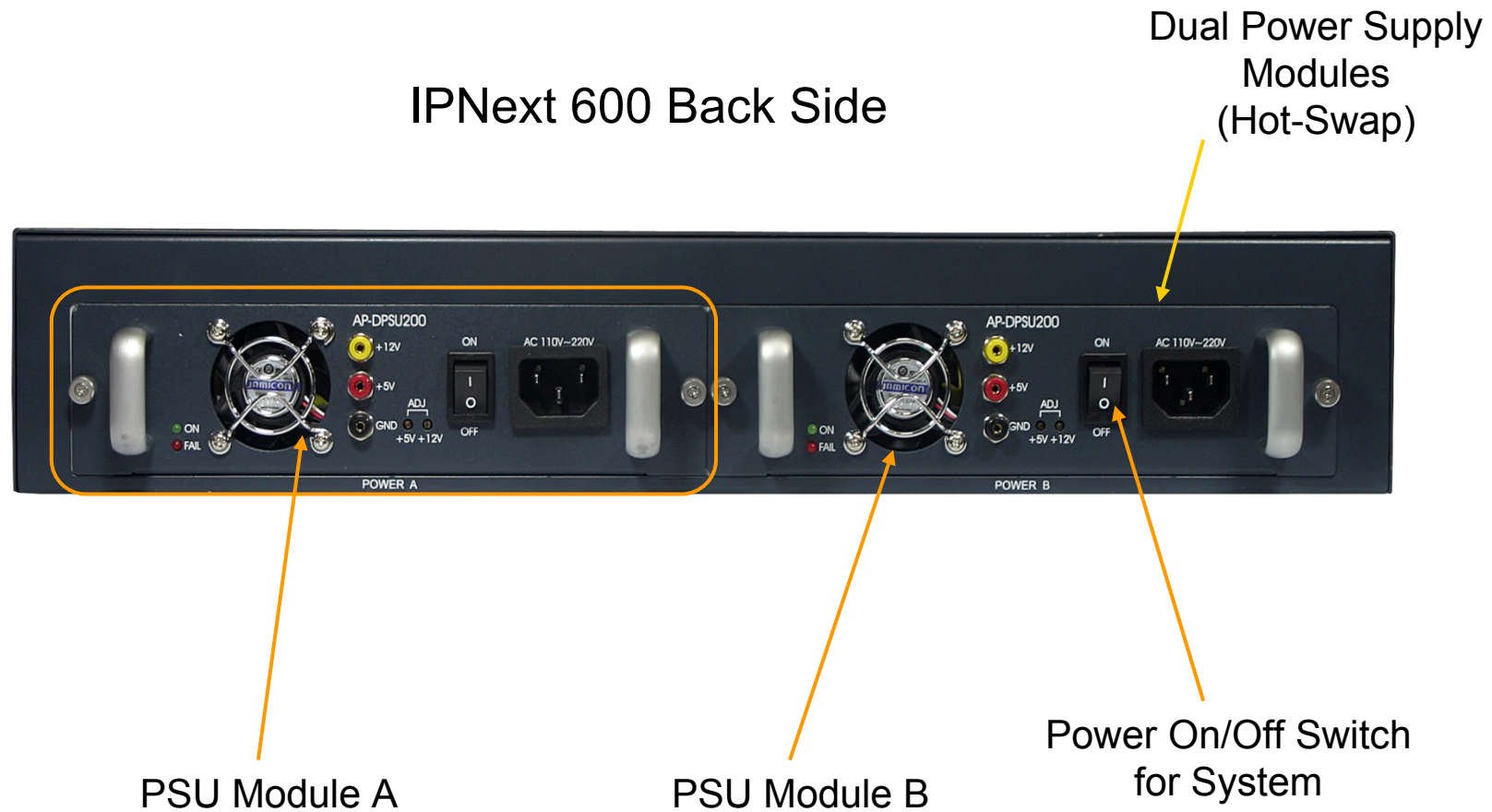


# Next Generation IP-PBX for Attendant Service

IPNext600 NGN IP-PBX

## Hardware Specification

IPNext 600 Back Side



# IP Phone for Emergency Call Attendant Service

AP-IP300 IP Phone

## Main Features

- 4.3 Inch Color LCD Display
- External I/O Interface
  - Audio In/Out
  - Two(2) Fast Ethernet Interface
  - PSTN FXO Interface (optional)
- PoE (Power over Ethernet) Support
- 25 Speed Dial button with Presence Indication Lamp
- Audio Broadcasting Controller & Terminal
- Powerful Color GUI
- IPv4/IPv6 Address Support
- SIP, H.323 Signaling Support
- High-end Error Resilient Against Various Packet Error

# IP Phone for Emergency Call Attendant Service

AP-IP300 IP Phone

## Hardware Specification

- RISC+DSP Microprocessor Computing Power (Dual Processor Architecture)
- High Quality 4.3 Inch Color LCD Panel
- 25 Speed Dial Key & User Presence Indication LED
- Optional PSTN Backup Interface
  - FXO Interface
- High quality Audio and Voice Interface
  - Stereo Audio Input Connector
  - Stereo Audio Output Connector
- Network Interface
  - Two(2) 10/100Mbps Fast Ethernet
- USB Host Mode Interface
  - USB Memory(Flash, HDD), etc
- Power Supply
  - Power over Ethernet
  - External Power Adaptor (5V, 3A)



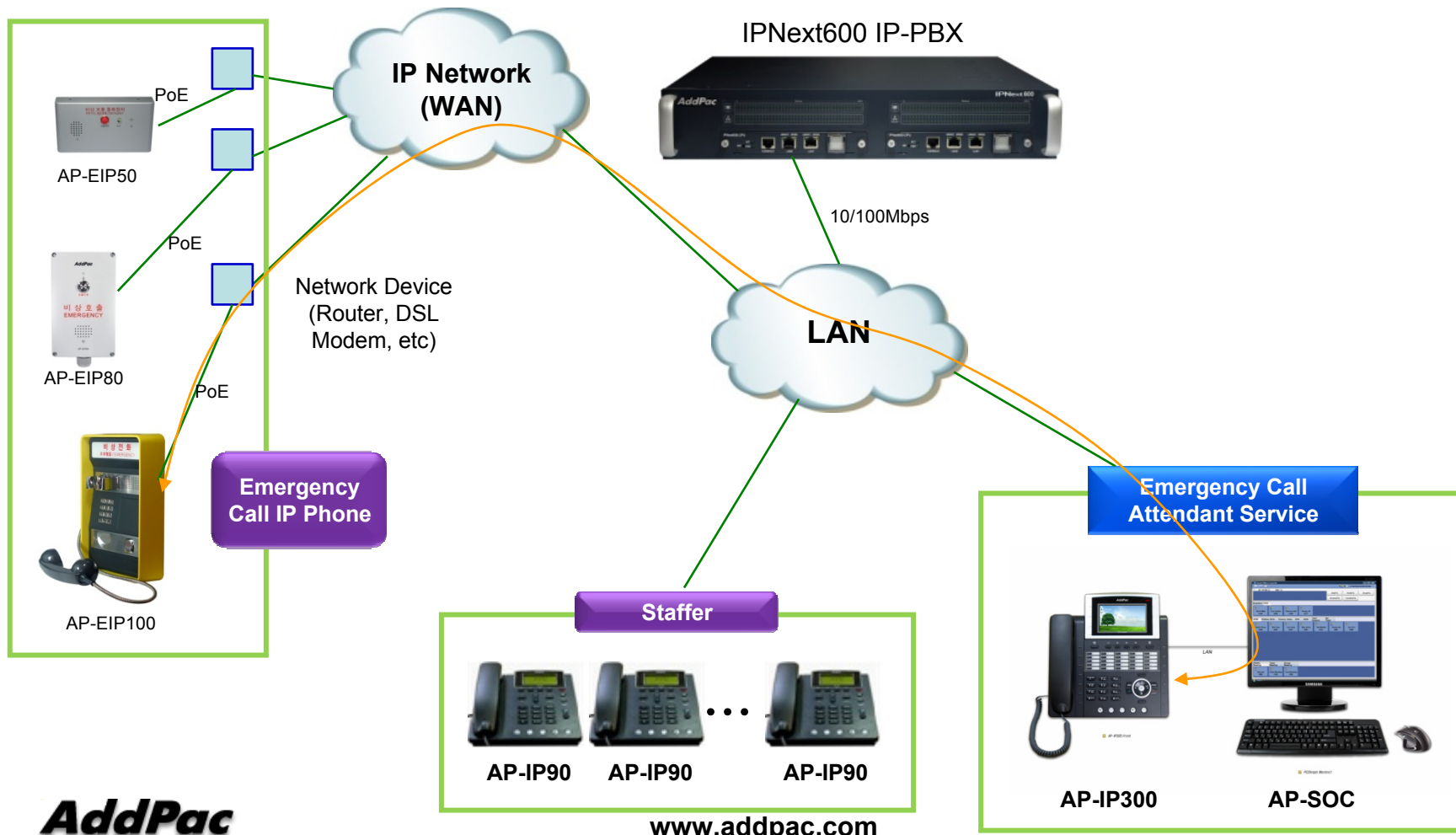
# Smart Office Console for Emergency Call Attendant Service

## Main Features

- MS-Window based Attendant Console
- Touch Screen Monitor Support
- AP-IP300 IP Phone Support
- Support Call Routing Service
  - Support User Presence Information
  - Support Phone Presence Information
  - Support Attendant Phone Call Control
  - Support Call Status Display
  - Support Group Call(Conference)
  - Support Various Monitoring Group

# Smart Office Console for Emergency Call Attendant Service

## Network Diagram



# Emergency Call Voice Recording Server

AP-NR500 Network Voice Recording Server

## Main Features

- IP based Network Voice Recording Server
- Powerful Management and User Friendly Features
- Fault Tolerant and Scalability Architecture
- High-performance Voice Recording Service
- Voice Transcoding (Up to 32 Channel) Function Support
- Smart DV<sub>oice</sub>R Manager for AP-NR500 Management
- Firmware Upgradeable Architecture
- Two(2) Gigabit Ethernet Interface
- One(1) 3.5Inch IDE Type HDD Module Slot

# Emergency Call Voice Recording Server

AP-NR500 Network Voice Recording Server

## Hardware Specification

- RISC Microprocessor Computing Power
- Main Chassis
  - Network Interface
    - Two(2) 10/100/1000Mbps Gigabit Ethernet
    - One(1) RS-232C Console (RJ45)
  - USB Host Mode Interface for DVD Backup, etc
  - One(1) Hard Disk Interface Slot



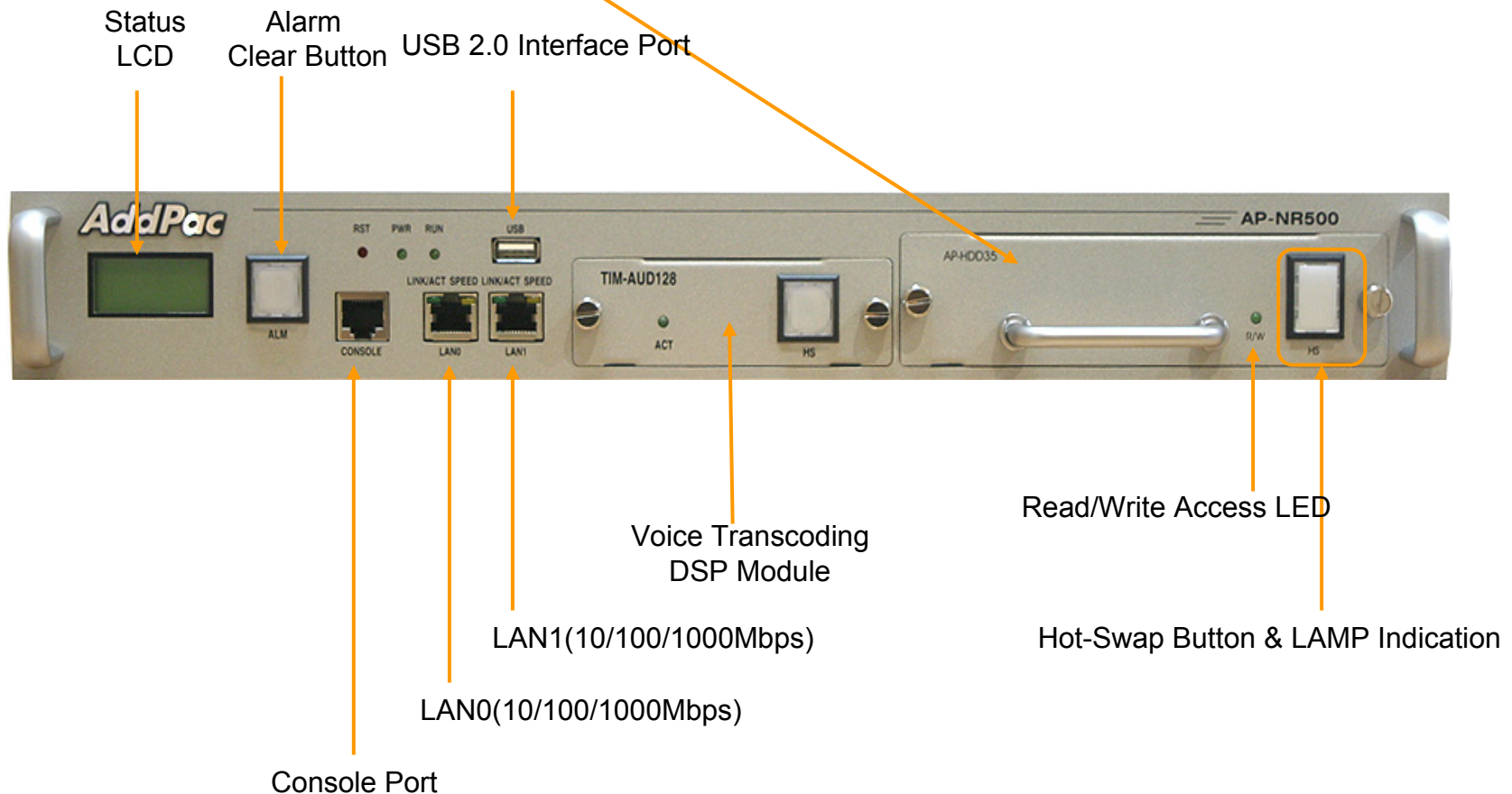


# Emergency Call Voice Recording Server

AP-NR500 Network Voice Recoding Server

- **Hard Disk Module**

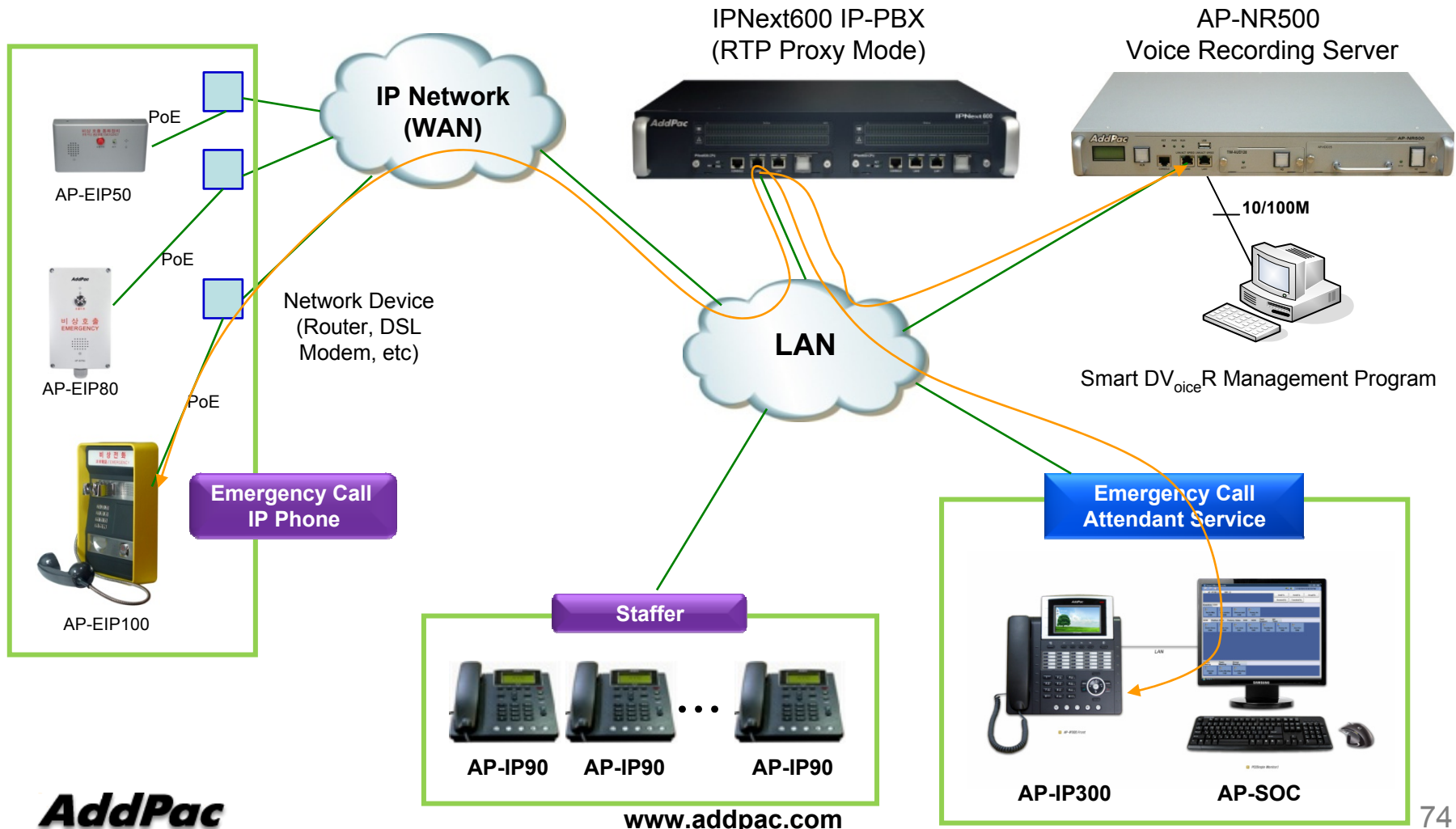
**AP-NR500 Front Side**



# Emergency Call Voice Recording Server

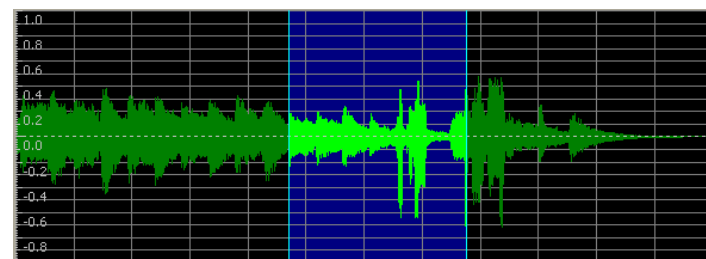
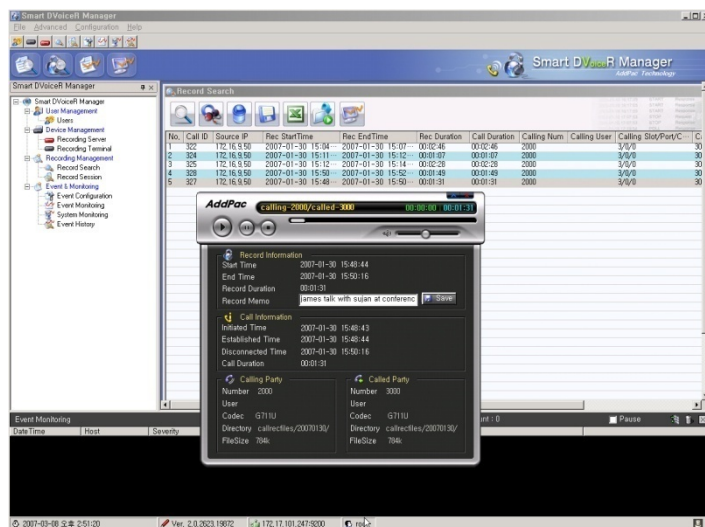
AP-NR500 Network Voice Recording Server

## Network Diagram



# Smart DVoiceR Management Program

## AP-NR500 Network Voice Recoding Server



- Call History Management (search/modify/delete/save)
- Media Play Management (Play/Stop/Seek/Pause)
- Live Call List Management, Live Call Monitoring
- Local Backup (File Manager Support, PC HDD, DVD) and Local Play
- User Management (registration/modify/delete/search)
- Server Status (CPU/Memory/HDD) & Event Monitoring
- Waveform Analyzing Function
- Recording Source Management (VoIP Gateway, IP Phone, etc)
- Live Recording Board



# Audio Broadcasting Solution for Emergency

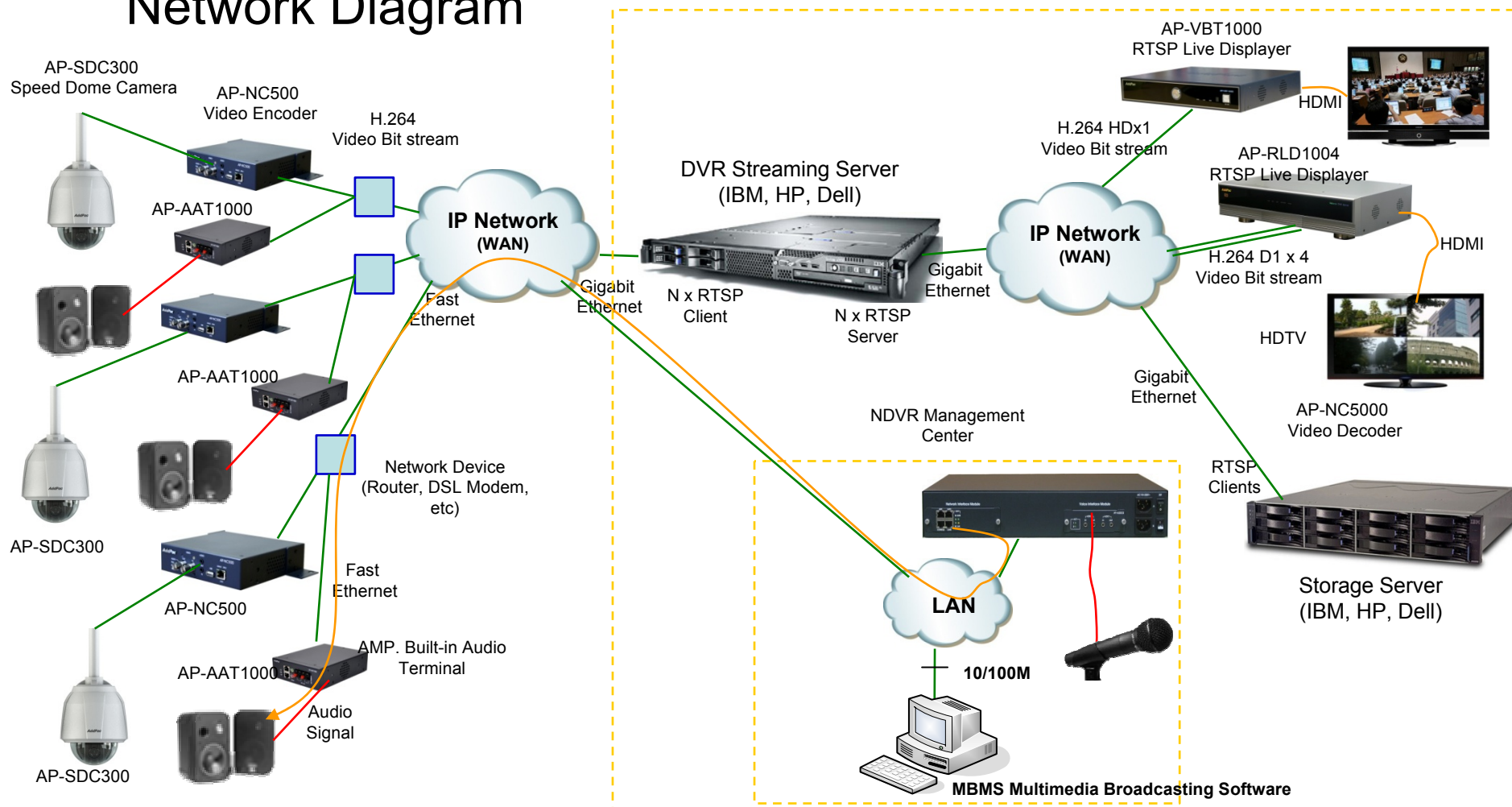
# IP Emergency Broadcasting Solution

## Contents

- Network Diagram
- IP Audio Broadcasting Solution for Emergency
  - AP-AAT1000 AMP built-in Audio Terminal for NDVR
  - AP-AA1000N AMP built-in Audio Terminal Module
  - AP3120 Audio Broadcasting Server
  - MBMS Multimedia Broadcasting Software

# IP Emergency Broadcasting Solution

## Network Diagram



# IP Emergency Broadcasting Solution

AP-AAT1000 AMP. Built-in Audio Terminal

## Main Features

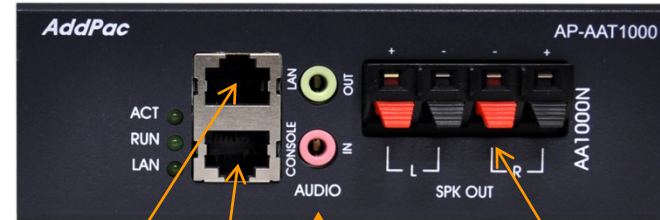
- IP based Audio Broadcasting
- AMP.(up to 100W) Built-in Audio Terminal for Speaker Direct Connection
- Audio Input Port Support for Video Codec Interworking
- IP and Analog Audio Port Both Support
- G.711/G.726 Voice Codec Support
- RTP/UDP Protocol Support
- IGMP Protocol Support for Multicasting
- Firmware Upgradeable Architecture
- One(1) Fast Ethernet Interface
- One(1) RS232C Port for CLI
- External Power Supply

# IP Emergency Broadcasting Solution

AP-AAT1000 AMP. Built-in Audio Terminal

## Hardware Specification

### AP-AAT1000 Front Side View



10/100Mbps Fast Ethernet

RS232C Console for CLI

Audio Input, Audio Output

Speaker Output



# IP Emergency Broadcasting Solution

AP-AA1000N AMP. Built-in Audio Terminal Module

## Main Features

- Audio Broadcasting Terminal Module for AP-NC1500 Target
- AMP.(up to 100W) Built-in Audio Terminal Module for Speaker Direct Connection
- Audio Input Port Support for Video Codec Interworking
- IP and Analog Audio Port Both Support
- G.711/G.726 Voice Codec Support
- RTP/UDP Protocol Support
- IGMP Protocol Support for Multicasting
- Firmware Upgradeable Architecture
- One(1) Fast Ethernet Interface
- One(1) RS232C Port for CLI

# IP Emergency Broadcasting Solution

AP-AA1000N AMP. Built-in Audio Terminal Module

## Hardware Specification

# IP Emergency Broadcasting Solution

## AP3120 Audio Broadcasting Server

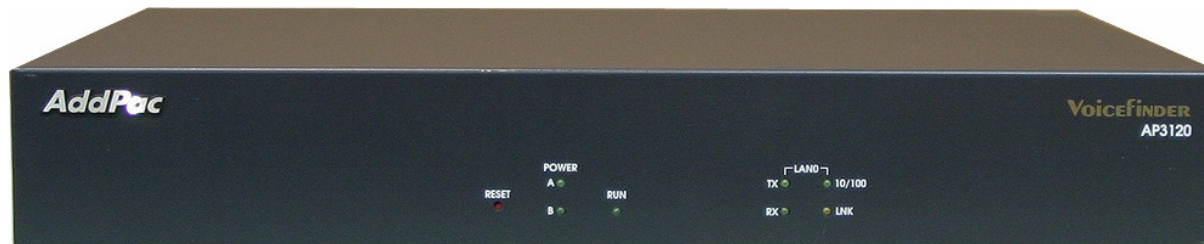
### Main Features

- IP based Audio Broadcasting Server
- Powerful Management and User Friendly Features
- Fault Tolerant and Scalability Architecture
- High-performance Audio Broadcasting Service
- Unicast and Multicasting Audio Broadcasting Service
- Point-to-Point Announcement Service
- Multi-Group/Multi-Session Broadcasting Service
- IGMP Protocol Support for Multicasting
- MBMS Software for AP3120 Management
- Firmware Upgradeable Architecture
- Two(2) Fast Ethernet Interface
- One(1) RS232C Port for CLI
- One(1) Audio Broadcasting Module Slot
- Various Audio Broadcasting Modules

# IP Emergency Broadcasting Solution

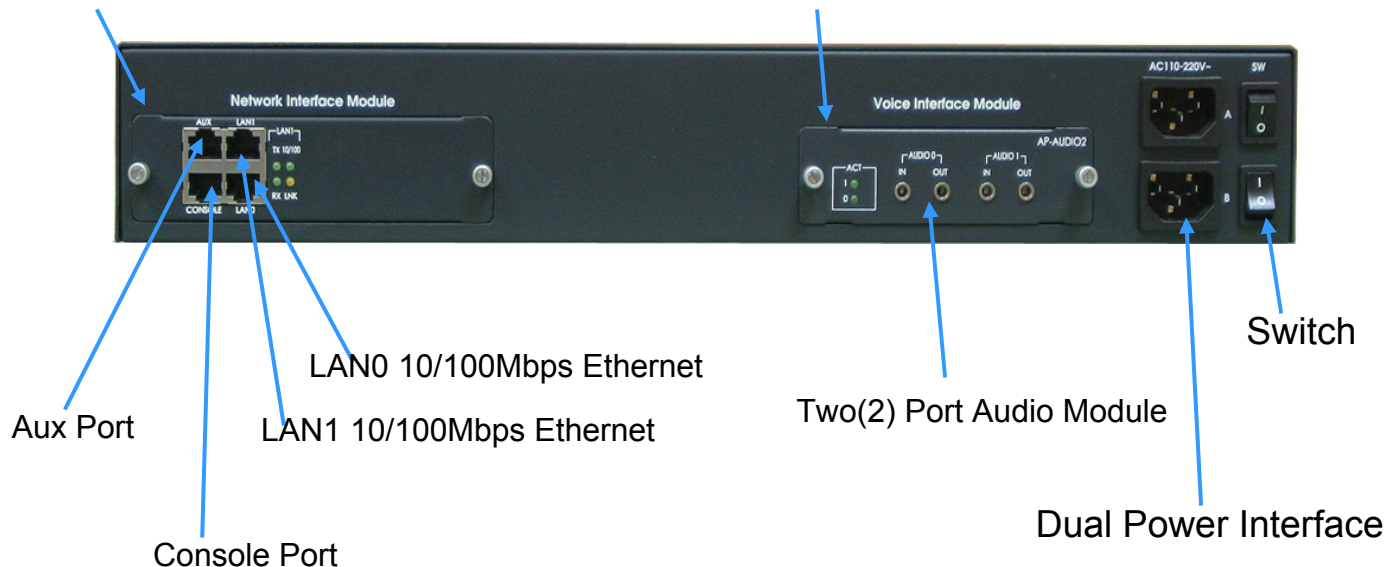
## AP3120 Audio Broadcasting Server

### Hardware Specification



Network Module Slot





Voice Interface Slot




# IP Emergency Broadcasting Solution

## AP3120 Audio Broadcasting Server

### Hardware Specification

Voice Modules	Module Features	Module Picture
AP-MP3	1-Pair Audio-In/Out Port, Direct MIC-In, Headphone High Quality <b>Audio Band</b> IP Broadcasting	
AP-AUDIO2	2-Pair Audio-In/Out Ports <b>Voice Band</b> IP Broadcasting	
AP-AUD1S3	1-Pair Audio-In/Out Ports, FXS Analog Interface <b>Voice Band</b> IP Broadcasting	
AP-AUD1S2O1	1-Pair Audio-In/Out Ports, FXS 2-Ports, FXO 1-Port <b>Voice Band</b> IP Broadcasting	



# DVR Streaming Server (AP-SDS)

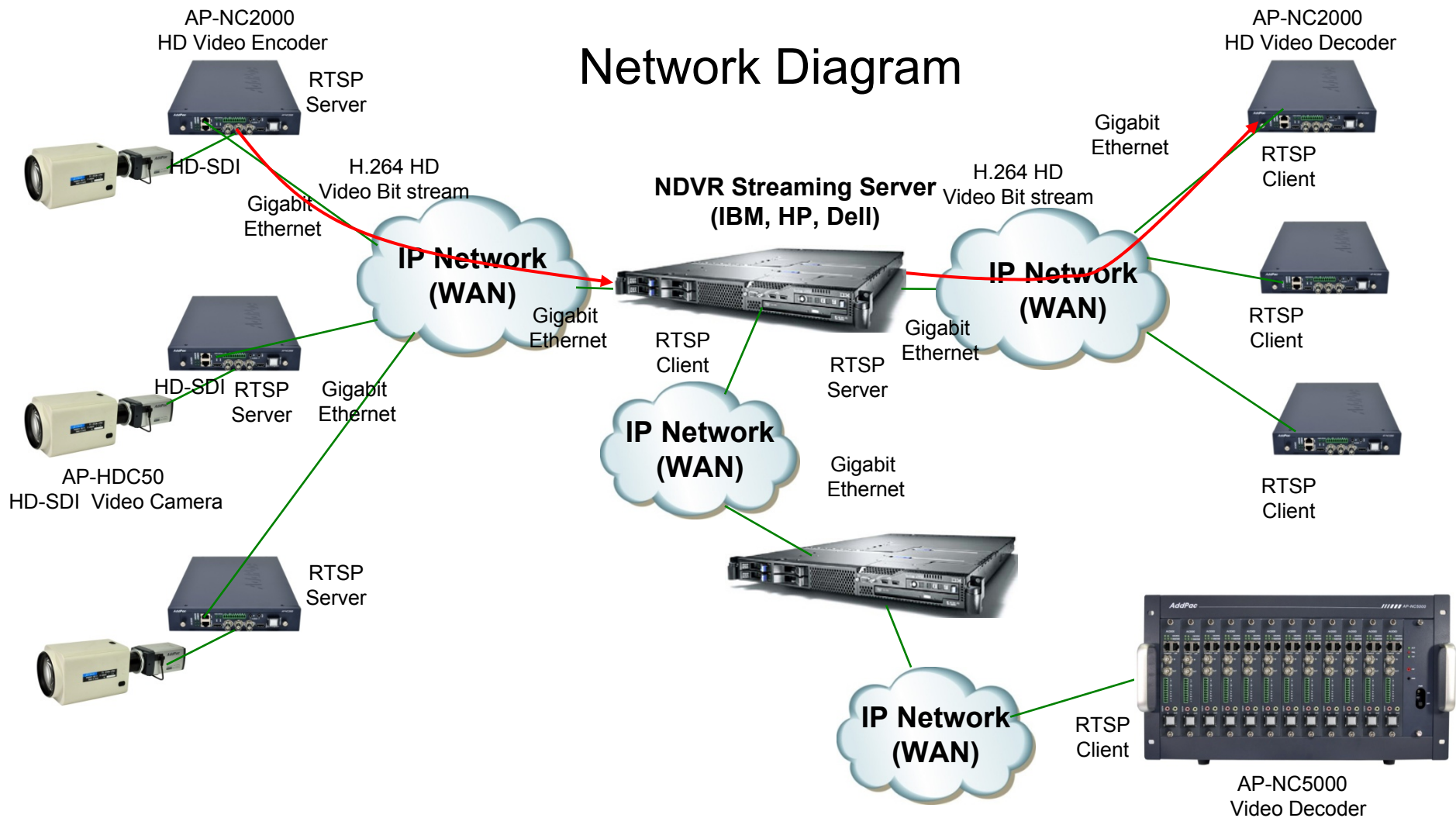
# RTSP based NDVR Streaming Server

## Contents

- Network Diagram
- RTSP based Network DVR Streaming Server
  - AP-SDS10000 NDVR Streaming Server
  - AP-SDS7000 NDVR Streaming Server
  - AP-SDS5000 NDVR Streaming Server

	<b>AP-SDS5000</b>	<b>AP-SDS7000</b>	<b>AP-SDS10000</b>
Platform	Embedded, APOS	Embedded, APOS	Commercial Server (HP, IBM, Dell, etc), Linux
Protocol	In :RTSP/TCP Out :RTSP/TCP,UDP	In :RTSP/TCP Out :RTSP/TCP,UDP	In :RTSP/TCP Out :RTSP/TCP,UDP
Performance (Basic Configuration)	HD(8M) : 16ch In, 32ch Out D1(1M) : 32ch In, 64ch Out	HD(8M) : 40ch In, 80ch Out D1(1M) : 80ch In, 160ch Out	HD(8M) : 64ch In, 128ch Out D1(1M) : 128ch In, 256ch Out
Module	4 Slot	10 Slot	N/A

# RTSP based NDVR Streaming Server





# RTSP based NDVR Streaming Server

AP-SDS10000 NDVR Streaming Server

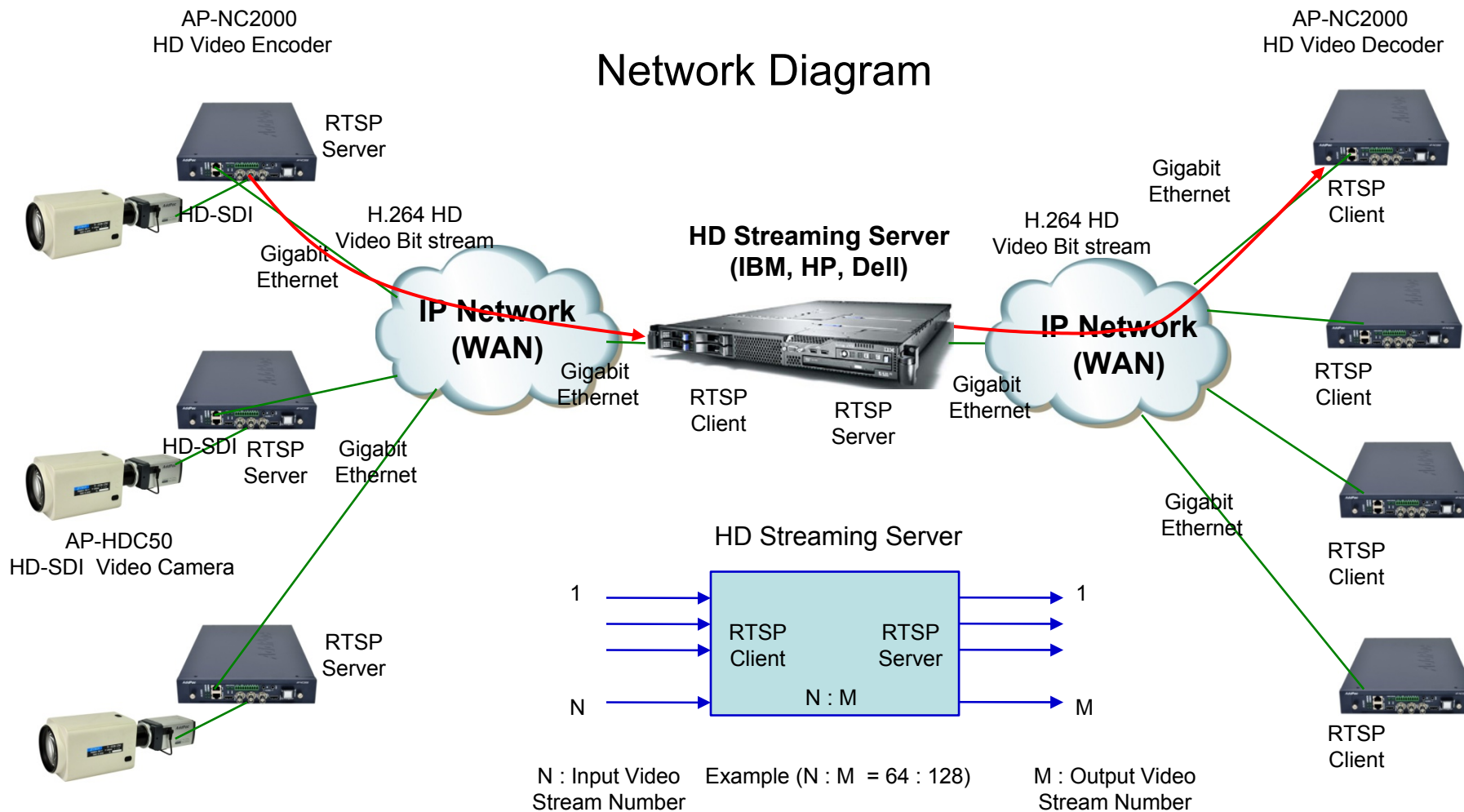
## Main Features

- RTSP based HD Streaming Server
- Linux based Commercial Server Platform
- RTSP Server & Client Architecture
- RTSP Client : Video Decoder, Storage Server, Display Server Interworking, etc
- RTSP Server : Video Encoder Interworking
- Maximum 64 Channel HD Video Bit-Stream Input (~8 Mbps/ch)
- Maximum 128 Channel HD Video Bit-Stream Output
- Server Function for Web based Smart DVR Manager
- Video Solution with Outstanding Network Service Capability

# RTSP based NDVR Streaming Server

AP-SDS10000 NDVR Streaming Server

## Network Diagram



# RTSP based NDVR Streaming Server

AP-SDS7000 NDVR Streaming Server

## Main Features

- RTSP based NDVR Streaming Server
- High-End RISC Microprocessor Architecture
- Embedded Platform, Hot-Swap Modules
- Ten(10) Module Slots for Elementary Streaming Service Module
- Fault Tolerant and Scalability Architecture
- RTSP Server & Client Architecture
- RTSP Client : Video Decoder, Storage Server, Display Server Interworking, etc
- RTSP Server : Video Encoder Interworking
- Server Function for Web based Smart DVR Manager
- Video Solution with Outstanding Network Service Capability
- Dual Power Supply Module for Power Redundancy Service

# RTSP based NDVR Streaming Server

AP-SDS7000 NDVR Streaming Server

## AP-SDR7000 Streaming Service Modules

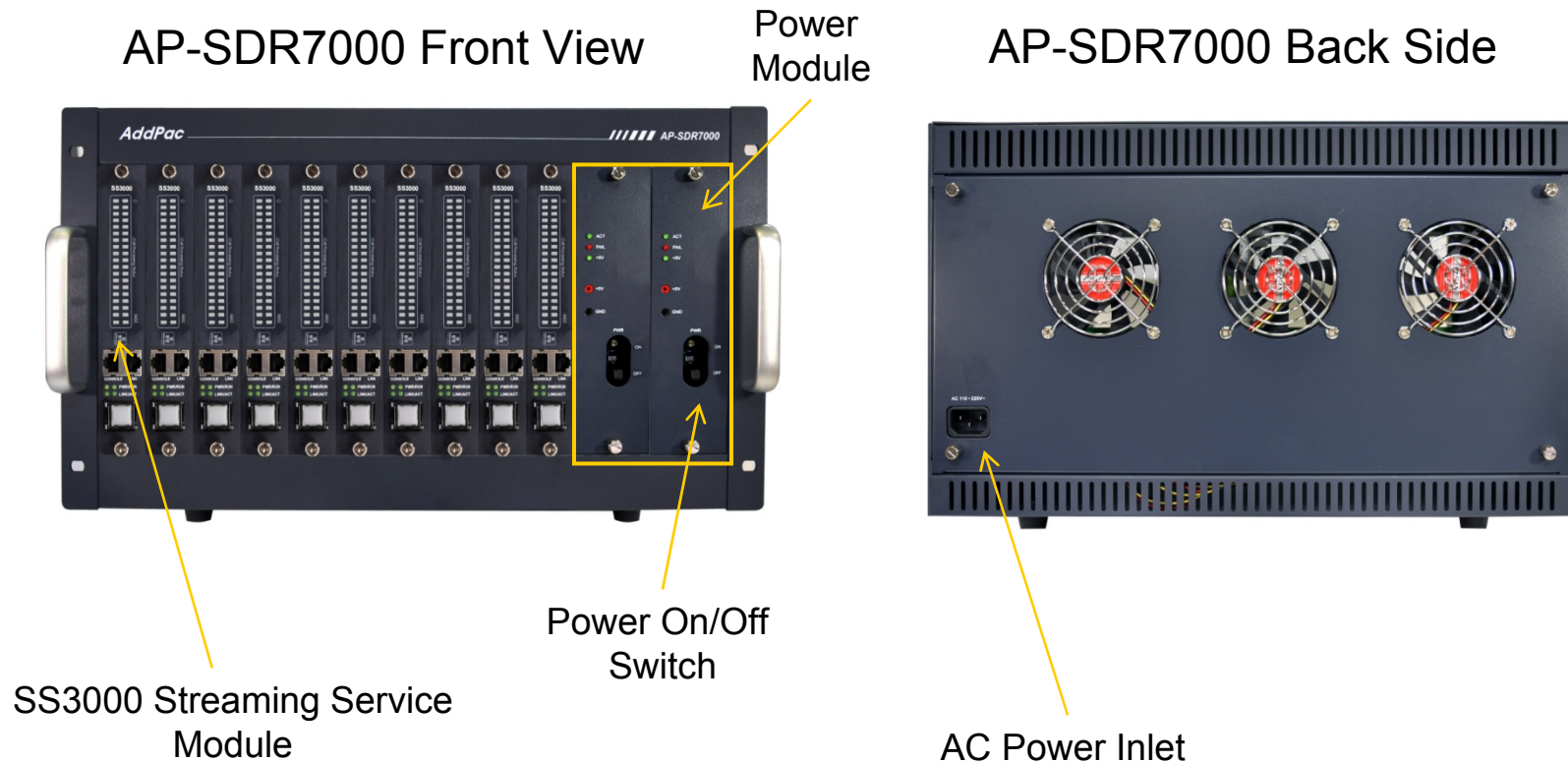
SS3000 Streaming Service Module  
(Gigabit Ethernet)



# RTSP based NDVR Streaming Server

## AP-SDS7000 NDVR Streaming Server

### Hardware Specification



# RTSP based NDVR Streaming Server

AP-SDS5000 NDVR Streaming Server

## Main Features

- RTSP based NDVR Streaming Server
- High-End RISC Microprocessor Architecture
- Embedded Platform, Hot-Swap Modules
- Four(4) Module Slots for Elementary Streaming Service Module
- Fault Tolerant and Scalability Architecture
- RTSP Server & Client Architecture
- RTSP Client : Video Decoder, Storage Server, Display Server Interworking
- RTSP Server : Video Encoder Interworking
- Server Function for Web based Smart DVR Manager
- Video Solution with Outstanding Network Service Capability

# RTSP based NDVR Streaming Server

AP-SDS5000 NDVR Streaming Server

## AP-SDR5000 Streaming Service Modules

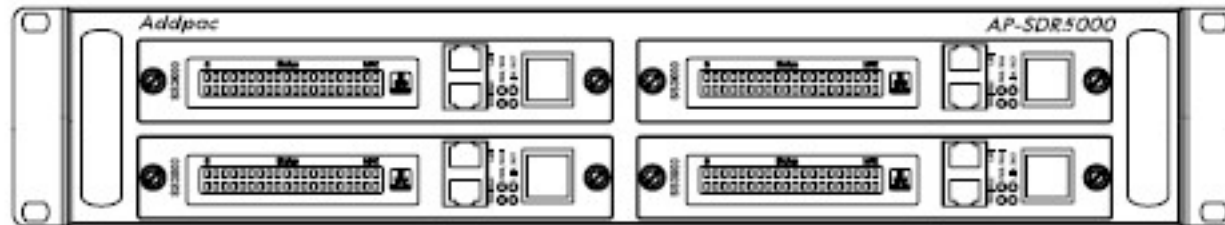
SS3000 Streaming Service Module  
(Gigabit Ethernet)



# RTSP based NDVR Streaming Server

AP-SDS5000 NDVR Streaming Server

## Hardware Specification







# DVR Streaming Relay Server (AP-SDR)

# NDVR Streaming Relay Server

AP-SDR10000 NDVR Streaming Relay Server

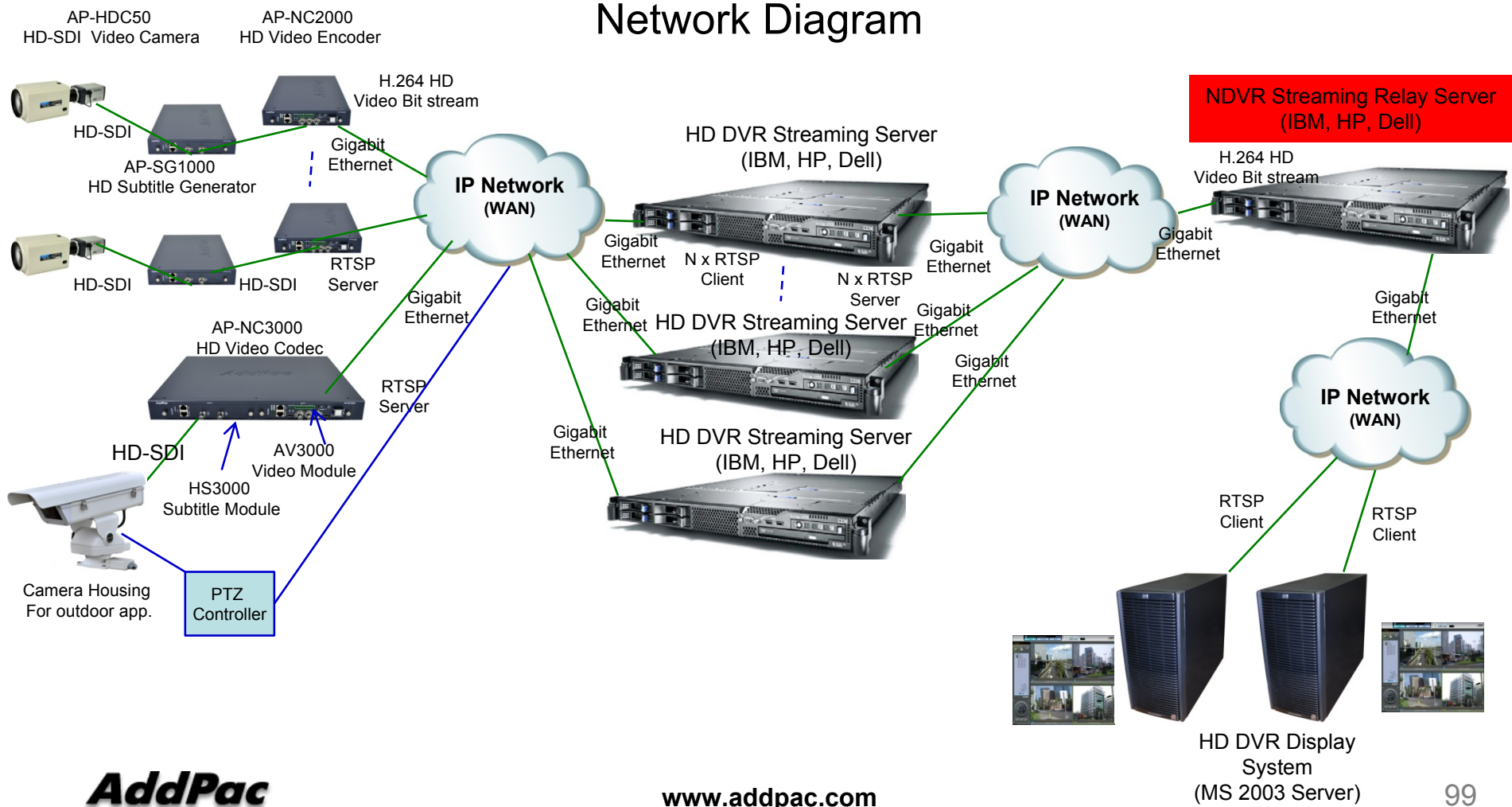
## Main Features

- RTSP based HD Streaming Relay Server
- Linux based Commercial Server Platform
- RTSP Server & Client Architecture
- HD Streaming Server, HD Display Server Interworking
- Maximum 64 Channel HD Video Bit-Stream Input (~8 Mbps/ch)
- Maximum 128 Channel HD Video Bit-Stream Output
- Maximum 128 Input, 256 Output Channel (D1)
- Camera Database Information Support
- Smart DVR Viewer Support
- Video Solution with Outstanding Network Service Capability

# NDVR Streaming Relay Server

## AP-SDR10000 NDVR Streaming Relay Server

### Network Diagram





# DVR Storage Server (AP-NR)

# RTSP based NDVR Storage Server

## Contents

- Network Diagram
- RTSP based Network DVR Streaming Server
  - AP-NR10000 NDVR Streaming Server
  - AP-NR5000L NDVR Streaming Server
  - AP-NR2000L NDVR Streaming Server

	<b>AP-NR2000L</b>	<b>AP-NR5000L</b>	<b>AP-NR10000</b>
Platform	Embedded, Linux	Embedded, Linux	Commercial Server (HP, IBM, Dell, etc), Linux
Protocol	RTSP/UDP	RTSP/UDP	RTSP/TCP,UDP
Performance (Basic Configuration)	D1(1M) : 16 Ch	D1(1M) : 16 Ch	HD(8M) : 16 Ch D1(1M) : 64 Ch
Module	10 Slot x 1 Shelf, 1 Slot : 500G HDD	10 Slot x N Shelf 1 Slot : 500G HDD	N/A

# NDVR Storage Server

AP-NR10000 NDVR Recording Server

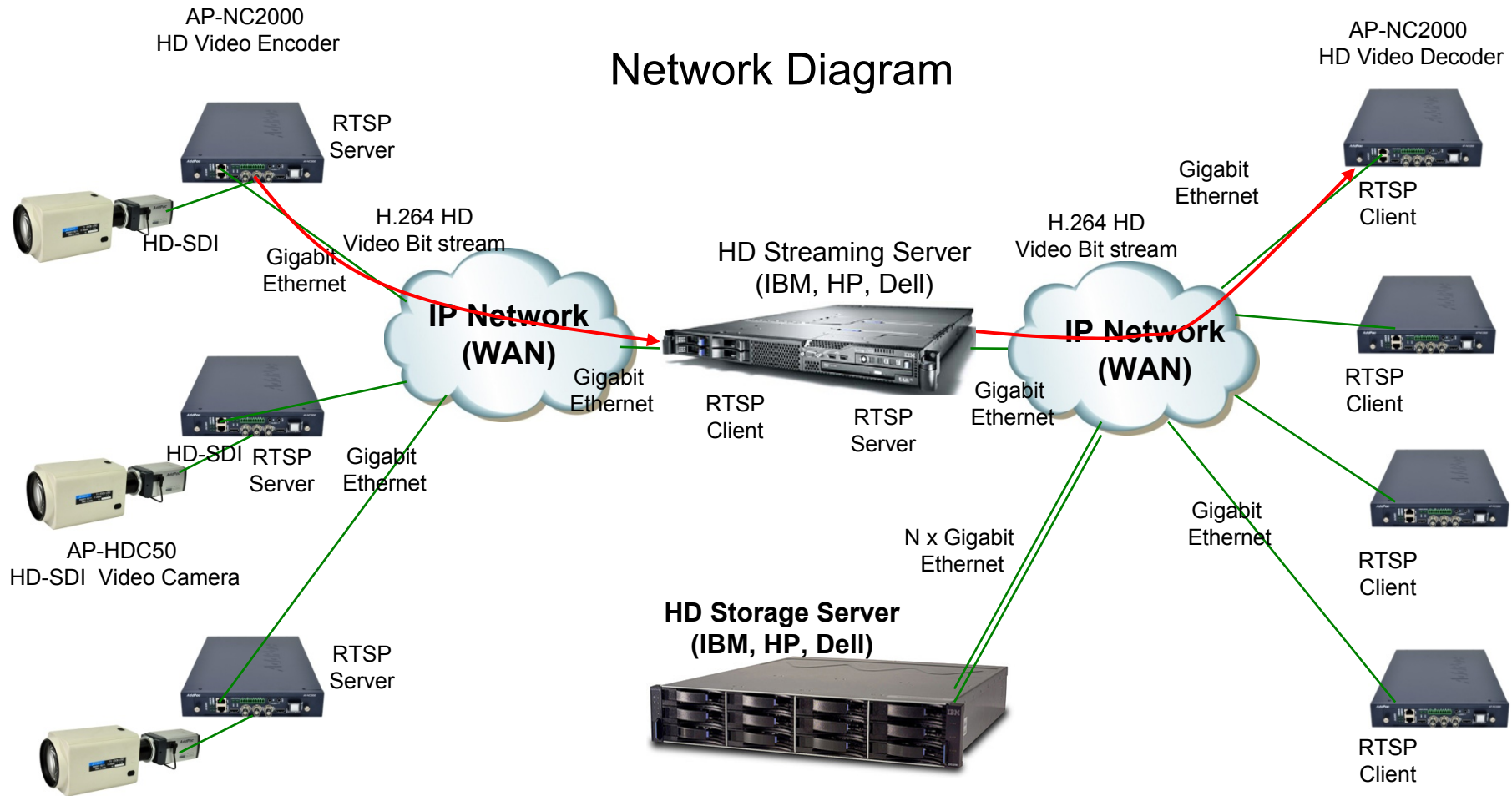
## Main Features

- RTSP based HD Storage Server
- Linux based Commercial Server Platform
- RTSP Server & Client Architecture
- HD Display System Interworking
- HDD Capacity : User Requirement
- Server Function for Web based Smart DVR Manager
- Video Solution with Outstanding Network Service Capability

# NDVR Storage Server

## AP-NR10000 NDVR Recording Server

### Network Diagram





# DVR Management Server (AP-SDMS)



# DVR Management Server

AP-SDMS Smart DVR Management Server

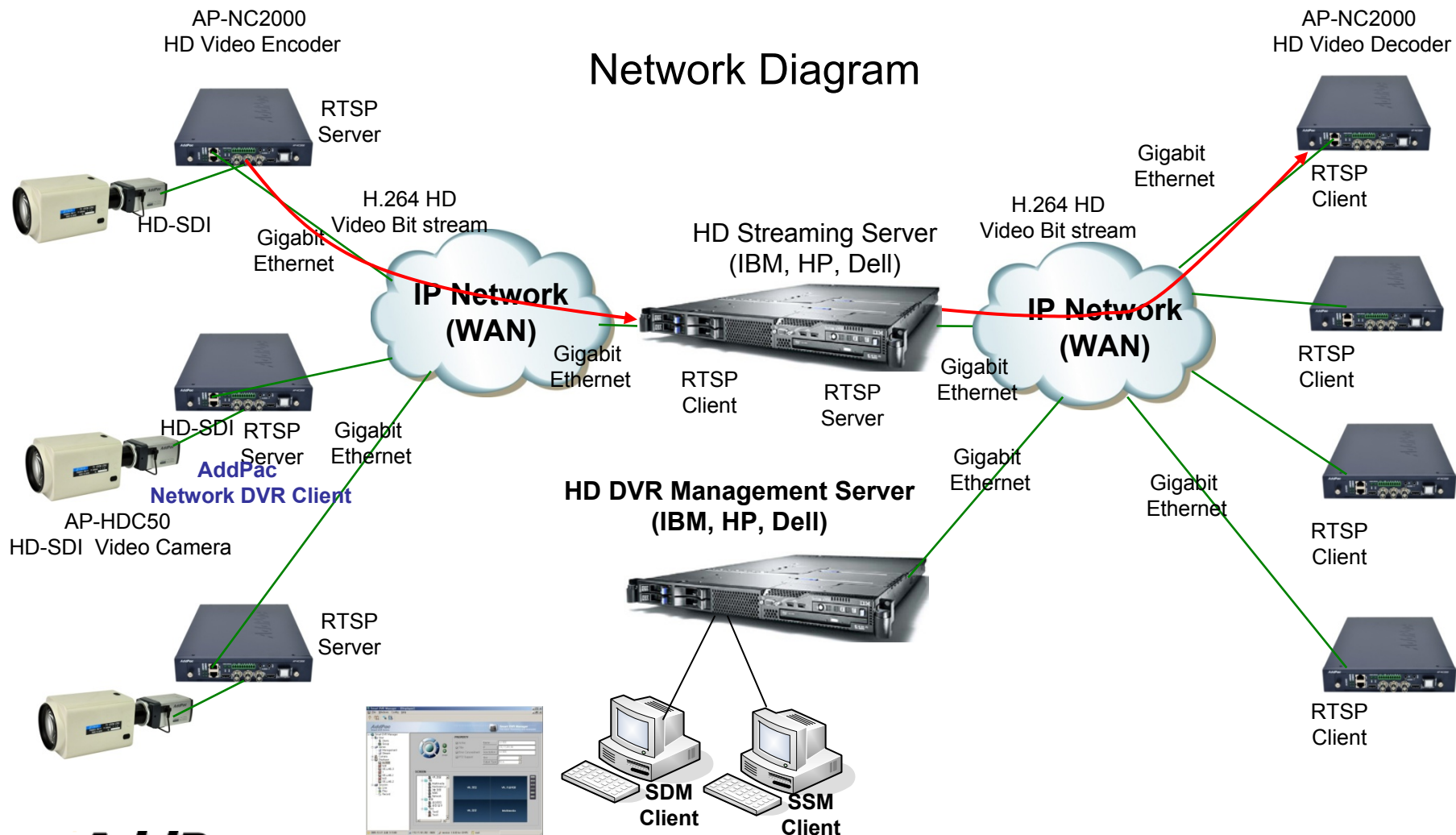
## Main Features

- Linux based Commercial Server Platform
- SDM(Smart DVR Manager) Web Server
- SSM(Smart Subtitle Manager ) Web Server
- Smart DVR Streaming Server Interworking
- AP-SG1000(HS3000) HD Subtitle Generator Interworking
- PTZ Controller Interworking
- Video Solution with Outstanding Network Service Capability

# DVR Management Server

## AP-SDMS Smart DVR Management Server

### Network Diagram



**AddPac**



[www.addpac.com](http://www.addpac.com)

# DVR Management Server

## AP-SDMS Smart DVR Management Server

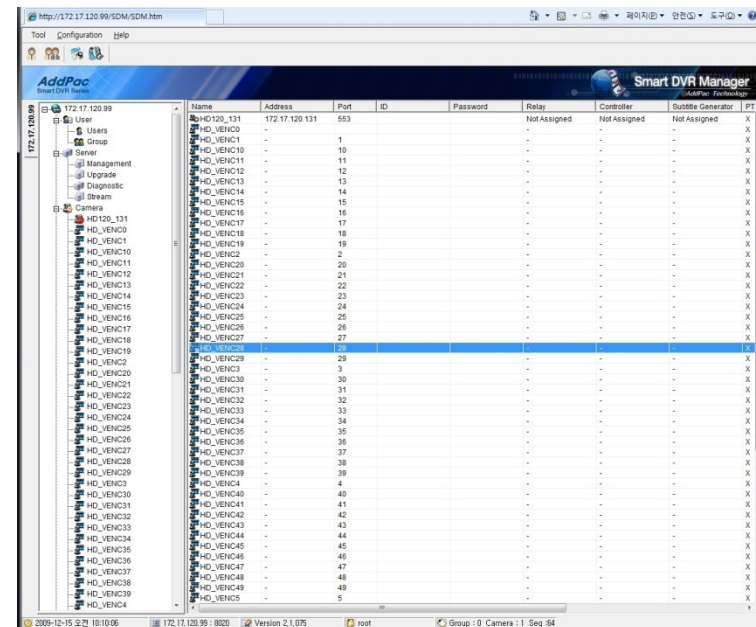
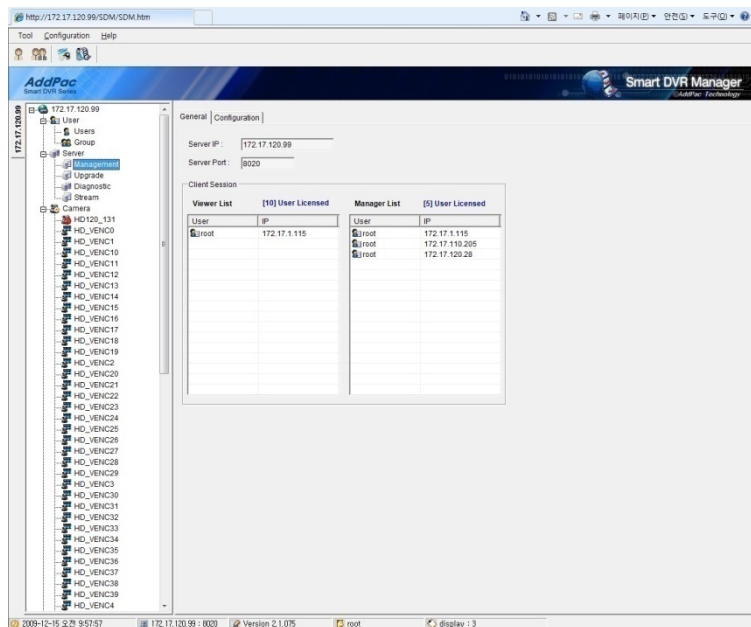
### Web based SDM Feature

- Login Management
- User and Group Management
- Management Server
  - CPU, Memory Utilization
  - Server IP address, Port , etc
- Network Camera Management
  - Registration, Model, IP address, PTZ Support, Video Encoder Control, etc

# DVR Management Server

## AP-SDMS Smart DVR Management Server

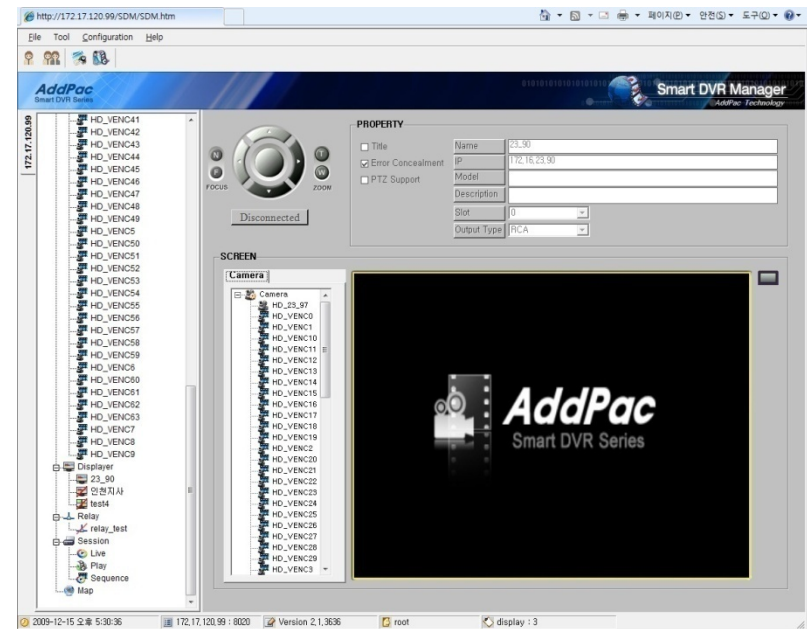
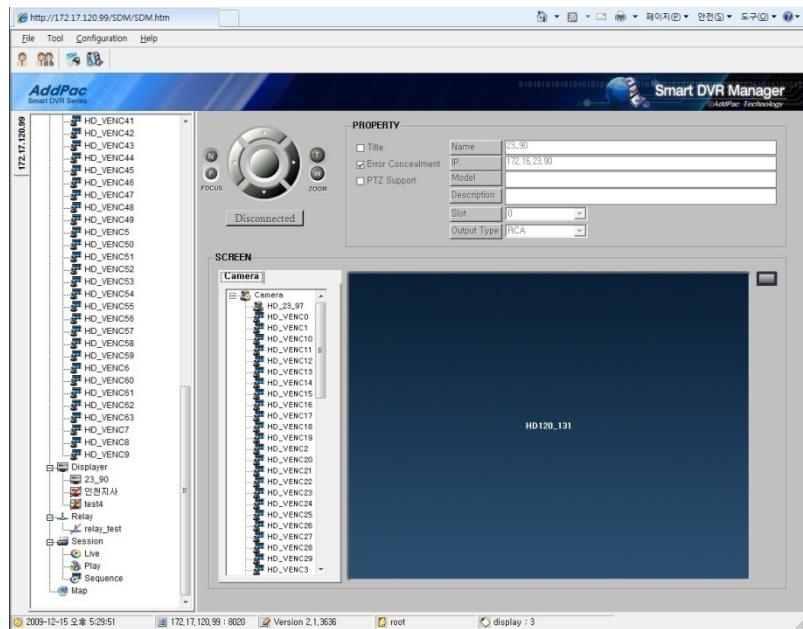
Web based SDM (screen capture)



# DVR Management Server

## AP-SDMS Smart DVR Management Server

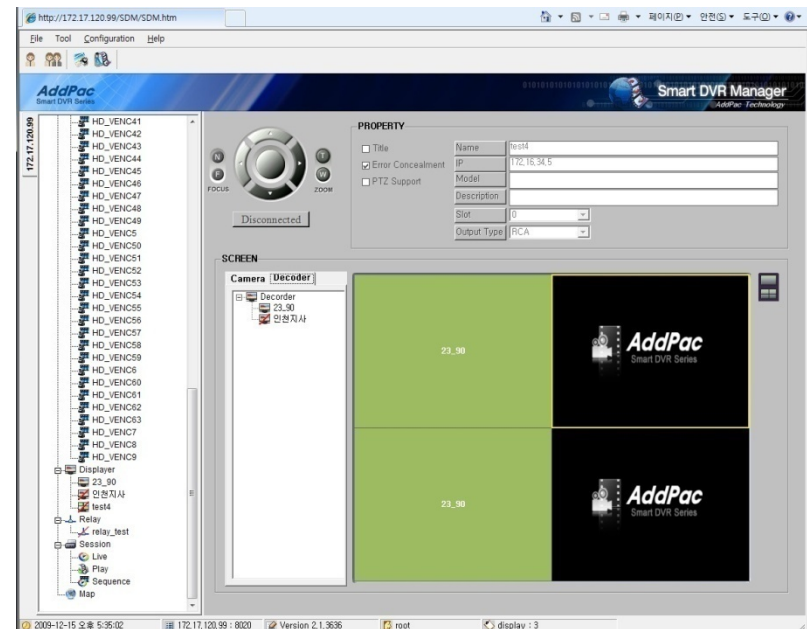
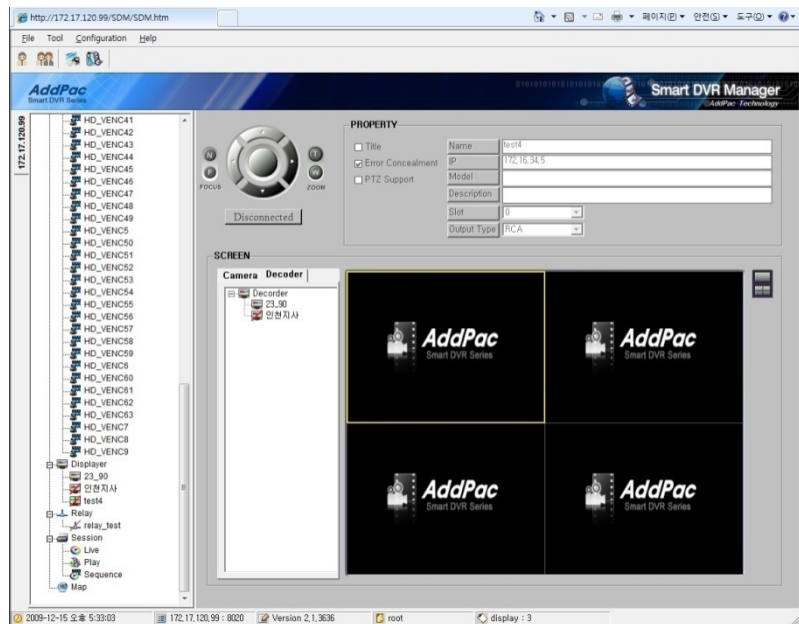
Web based SDM (screen capture)



# DVR Management Server

## AP-SDMS Smart DVR Management Server

Web based SDM (screen capture)



# Ordering Information

- **Large Scale Network DVR Solution**
- **Including 1 Year Hardware Warranty**
- **Product Documents**
  - Install and Operation Guide (PDF)
- **Pricing**
  - AddPac Technology Regional Sales Manager
  - Authorized Sales and Marketing Representatives
  - Please Contact [www.addpac.com](http://www.addpac.com)



# Thank you!

**AddPac Technology Co., Ltd.**  
Sales and Marketing

Phone +82.2.568.3848 (KOREA)

FAX +82.2.568.3847 (KOREA)

E-mail [sales@addpac.com](mailto:sales@addpac.com)