



AP-WP100 Wi-Fi Phone

AP-WP100, AddPac Wi-Fi IP Phone is the wireless LAN IP Phone. Through the wireless LAN Access Point, this Wi-Fi Phone provides IP telephony service at optimum, in an ordinary Internet environment with the AddPac IP-PBX Solution. AP-WP100 opens the new world of IP communications with high voice quality. The AddPac AP-WP100 is a new Wi-Fi IP Phone, which is integrated with the wireless IP telephony and broadcasting service. This Wi-Fi IP Phone provides the advanced features and service of SIP-based VoIP Signaling Protocol, the voice codec of G.711, stereo audio with input/output interface for headset, large-sized graphic LCD, a variety of function keys (Push-to-Talk Button), 802.11 b/g wireless interface, power adapter and USB interface, QoS, and IP broadcasting.

In many features, AP-WP100 is surely distinctive. The large-sized LCD provides information display. By using audio input/ output interface, you can enjoy listening to Telephony Service and IP Voice Broadcasting, through a headset and external AMP built-in speaker. To cope with many different delays in Internet and packet error in the condition of low-bandwidth, QoS and error concealment is used to guarantee the optimal voice quality. Internetworking with a variety of the AddPac IP Telephony Solutions (IP-PBX, MCU, Video Codec, VoIP Gateway, IP Terminals and others) and the PC-based Smart Messenger, you can enjoy the convenient and intelligent IP Telephony Service.

You can use Push-to-Talk service, which is the feature of radio set, by pressing the buttons on a side of AP-WP100 Wi-Fi IP Phone. Push-to-Talk service can be provided for multiple-party and between groups by using the AddPac IP-PBX and Audio MCU (AP-MC1500), in IP network environment. Push-to-Talk service is basically provided between AP-WP100 Wi-Fi IP Phones. Interworking between fixed and wireless networks, the service also can be provided to the remote location with the fixed IP Phone (AP-IP300).

AP-WP100 provides not only the security feature for network access but also the service level of security. SRTP and TLS 1.0 secure protocol S/W version firmware for encryption of end-to-end media and signaling information will be released in near future.

AddPac Technology is not just another vendor provides only Wi-Fi IP Phone terminal, but also a variety of products based on the systematic solution, which is suitable to the customer's network environment including VoIP and Media Gateway, all different kinds of audio/ video IP terminals, IP video codec (HD, SD), external audio/ video broadcasting, VoD Solution, Network DVR, Audio/Video Recording Solutions, Traffic Controller and QoS Solutions. As All-IP-based multimedia telephony is emerging, converging territorial solutions and end-to-end total solution become crucially important. The AddPac IP Telephony solution has been designed for the total integration of multimedia solution to satisfy the customer's wants and needs.

Product Highlights

- High Performance Wi-Fi IP Phone for Complete IP Telephony Solution with Voice, Audio, Data Integrated
- Optimum Voice Quality on Wireless LAN and Internet
- Audio In/Out Interfaces for External Devices such as Headset, Amp Speaker
- IP based Voice Broadcasting Service
- Push-to-Talk Service (Option)
- SRTP and TLS 1.0 Security (Option)
- Easy System Firmware Upgrade On the Basis of High Performance Mobile Embedded RISC CPU
- Voice Mail Feature Interworking With AddPac IP-PBX
- Support SIP VoIP Signaling
- LCD Control Service for Quick and Easy Setup
- LCD : 220 X 176 260K Color 2" TFT LCD
- Wireless Specification
 - IEEE802.11b/g Support
 - Operating Frequency : 2.4GHz
 - 802.11g: 54, 48, 36, 24, 18, 12, 9, 6Mbps, auto rate
 - 802.11b: 11, 5.5, 2, 1Mbps, auto rate
 - Operating Channels :IEEE Channels 1-14
- Easy-to-Use Hot Keys
- EMS Solution for Network Maintenance
- APOS Guarantees Scalability, Reliability, Stability

AP-WP100 Applications

- IP Telephony System
- IP Voice Broadcasting System
- IP based Push-to-Talk Service
- Secure IP Telephony Solution

Hardware Specifications

Main Chassis	High Solidity ABS Chassis
CPU	High Performance Mobile RISC CPU
Memory	32MB NAND Flash Memory 32MB mSDRAM Main Memory
WI-FI Interface	IEEE802.11b/g Support Operating Frequency : 2.4GHz 802.11g: 54, 48, 36, 24, 18, 12, 9, 6Mbps, auto rate 802.11b: 11, 5.5, 2, 1Mbps, auto rate Operating Channels :IEEE Channels 1-14
LCD Window	LCD : 220 X 176 260K Color 2" TFT LCD
IO Port	Ear-phone jack 2.5mm, 4 Contact 24PIN Data Connector USB Device, RS232 TTL, Battery Charge 4.2V or 5V(USB) 3PIN Battery Charge Connector(4.2V)
Other	23 Keys (Front) + 4 Keys (Side) , 8 Back Light LEDs Vibration Motor Battery : 3.7V, 1330mAh Lithium Polymer Battery (Inner Pack Type)
Operation Environment	Temperature 0℃ ~ +45℃(operating), -40℃ ~ +85℃ (storage), Humidity 5% ~ 95%
Power Supply	AC10~220VAC 50/60Hz, 4.2V 0.75Amp.
Dimension	AP-WP100 : 49mm x 130mm x 17.5 (WxHxD) AP-WP100 Cradle : 76.5mm x 99mm x 35mm(WxHxD)
Weight	AP-WP100 : 0.1Kg AP-WP100 Cradle : 0.06Kg

IP Telephony Services (AddPac IP-PBX)

VoIP Signaling Protocol	SIP VoIP Signaling Protocol SIP Proxy Server Interoperability
IP-PBX Signaling Protocol	SIP Protocol between IP-PBX and Wi-Fi IP Phone
Voice Mail	Voice Mail with IVR Voice Mail Notification
Number & Call Routing	Basic Call, Music on Hold, Blind Transfer, Call Pickup, Call Waiting, Call Park, , Hunt Group, individual Call Park, Group Call Park, Call Forwarding ? Unconditional, Busy, No Answer, Etc.
Messenger Interworkng	MS Window based Smart Messenger Program Support
Conference support	AddPac IP-PBX Audio MCU or External MCU

Wi-Fi Security Features

Wi-Fi Security	WPA-PSK, WPA2-PSK 802.11i Security Standard Support (WEP with TKIP security, 64/128bit WEP)
-----------------------	---------------------------------------------------------------------------------------------------

Audio Service and Signaling Protocol Features

Voice and Audio Codec	G.711 ulaw, G.711 alaw
Voice Processing	VAD, CNG, Dynamic Jitter Buffer Operation
DTMF	Detection and Generation, RFC 2833 Compliant
Telephone Features	On-screen Dial Pad, Caller ID & Hold
Voice QoS	Enhanced QoS Management for Voice Traffic

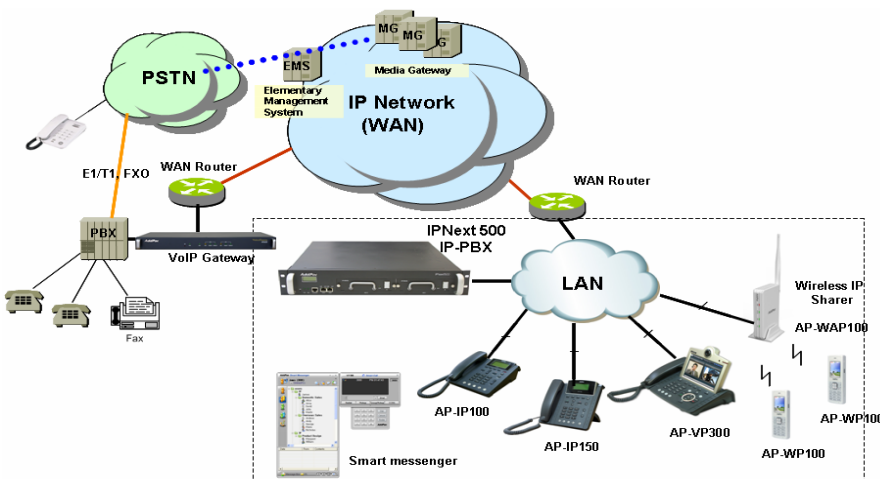
Application Service (Option, Future Release)

Push-to-Talk Service	with AddPac IP-PBX, MCU Between Wi-Fi Phones, Between Wi-Fi Phone and IP Phone(AP-IP300)
Secure IP Telephony Service	SRTP, TLS1.0 for Secure VoIP Service

IP Routing and Other Features

IP Routing	IPv4/IPv6 and IEEE 802.1Q VLAN Routing Static / DHCP /PPPoE
Network Management	Standard SNMP Agent v2/v3 Support, Standard & Enterprise MIB Support Telnet, Rlogin, SSH Interface Remote Firmware Upgrade via FTP/TFTP Support
Security Features	IP Packet Filtering, Access List, Access Control and Data Protections, Enable/Disable for Specific Protocols Multi-level User Account Management, Auto-disconnect for Telnet/Console Sessions, HTTPS / SSH Interface
Operation & Management	Performance Analyzing (Process, CPU, Interface), Configuration Backup and Restore for APOS Management, Debugging and Diagnosis Features, System Booting/Rebooting through Watch-Dog, Data Logging Features, FTP/TFTP/Telnet/SSH Server And Client, HTTP Server
Other Features	DHCP Server and Relay, Network Time Protocol (NTP), etc.
Control and Setting	OSD (On Screen Display)

AP-WP100 Network Diagram



Ordering Information

- AP-WP100 Wi-Fi IP Phone Main Body
- Wi-Fi Phone Cradle with External Battery Charge Function
- Including Battery Pack
- External Power Adaptor : Option

