

AP-WP100™ Wi-Fi IP Phone

High Performance Wi-Fi IP Phone Solution

Preliminary Product Overview

(Without notice, following described technical spec. can be changed)



AddPac

AddPac Technology

2009, Sales and Marketing

www.addpac.com

Contents

AP-WP100 Wi-Fi IP Phone

- Product Overview
- Hardware Specification
- Software Service
- Audio & Voice Service and Features
- Network Service and Features
- Application Area
- Ordering Information



AddPac

www.addpac.com



IPNext20W
IP-PBX with AP



AP-WAP100
802.11b/g AP

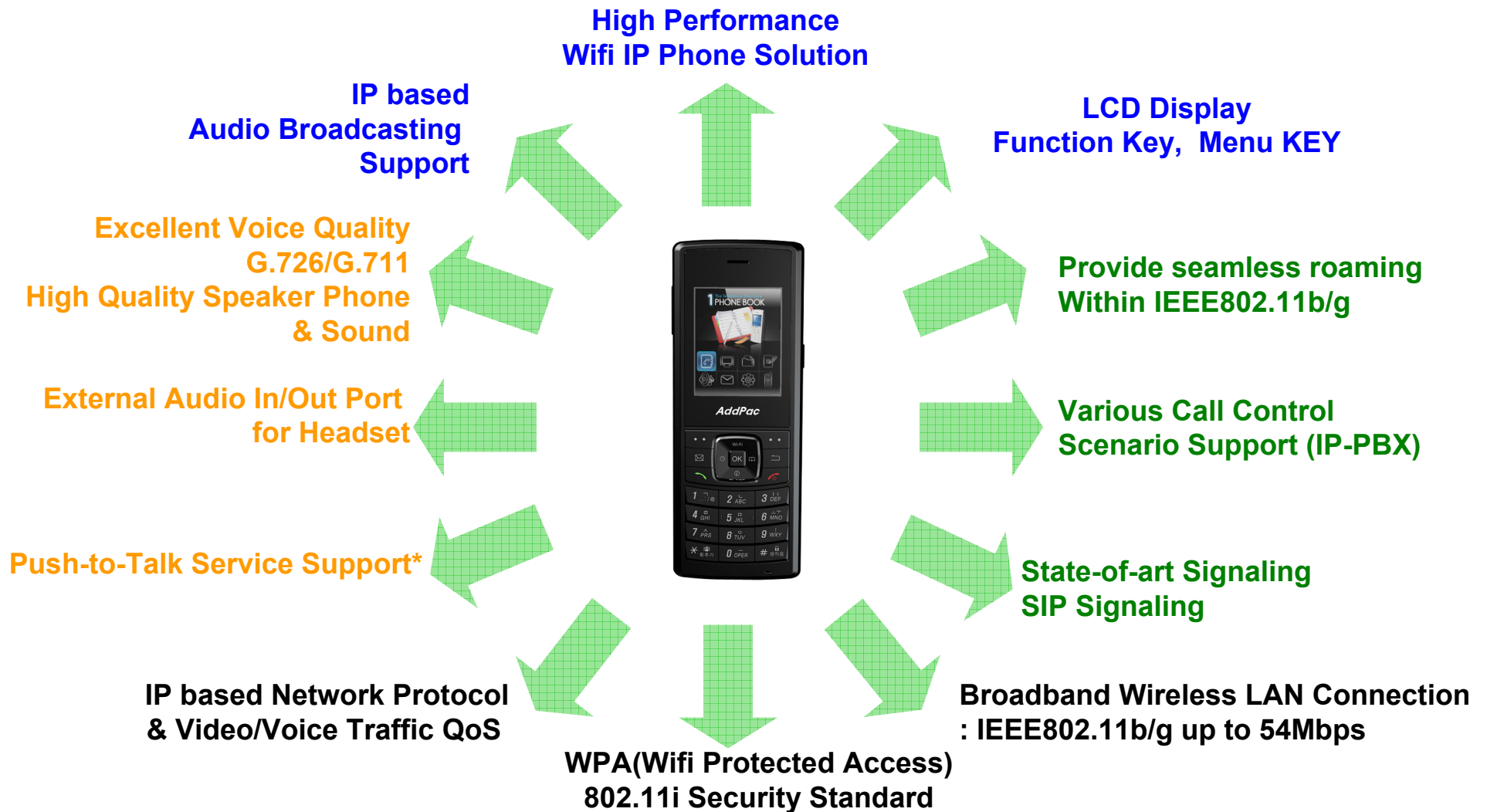
Product Overview

AP-WP100 Wi-Fi IP Phone

- Wifi IP Phone Solution
- Wifi IP Audio Broadcasting Terminal Solution
- High-performance Audio, and Voice Service
- Firmware Upgradeable Architecture
- VoIP Solution with Outstanding Network Service Capability
- Audio Privacy Protection

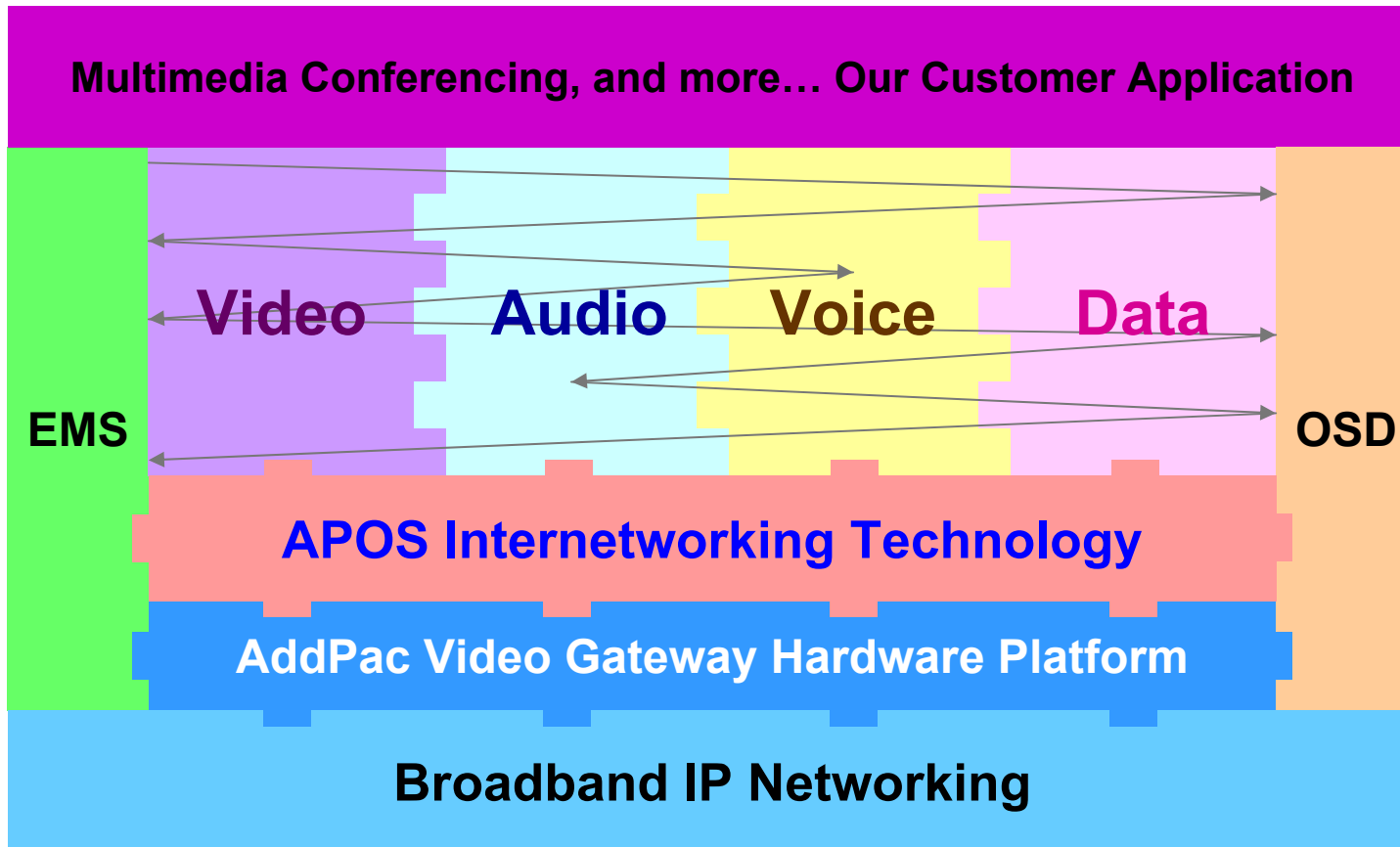
Product Highlights

AP-WP100 Wi-Fi IP Phone



Multimedia Service

AP-WP100 Wi-Fi IP Phone

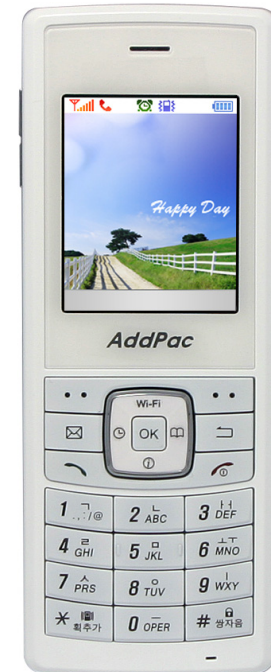


- APOS : AddPac Internetworking Operating System
- OSD : On- Screen Display
- EMS : Element Management System

Hardware Specification

AP-WP100 Wi-Fi IP Phone

- **Microprocessor**
 - RISC processor(ARM920T CPU core)
- **Memory**
 - NAND FLASH : 32Mbyte
 - mSDRAM : 32MByte
- **Wireless**
 - IEEE802.11b/g Support
 - Operating Frequency : 2.4GHz
 - 802.11g: 54, 48, 36, 24, 18, 12, 9, 6Mbps, auto rate
 - 802.11b: 11, 5.5, 2, 1Mbps, auto rate
 - Operating Channels :IEEE Channels 1–14
- **Audio Interface**
 - 2 x MIC-IN, Receiver OUT, Speaker OUT , Head Phone OUT
 - Interface : I2S (Chip Set : CS42L52)
- **Display**
 - LCD : 220 X 176 260K Color 2" TFT LCD (16bit data bus)



Hardware Specification

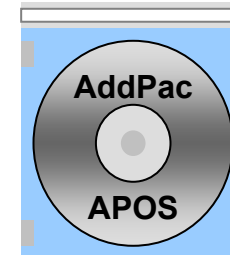
AP-WP100 Wi-Fi IP Phone

- **IO PORT**
 - Ear-phone jack 2.5mm, 4 Contact
 - 24PIN Data Connector
 - USB Device, RS232 TTL, Battery Charge 4.2V or 5V(USB)
 - 3PIN Battery Charge Connector(4.2V)
- **Other**
 - 23 Keys (Front) + 4 Keys (Side) , 8 Back Light LEDs
 - Vibration Motor
 - Battery : 3.7V, 1330mAh Lithium Polymer Battery (Inner Pack Type)

Software Service

AP-WP100 Wi-Fi IP Phone

- **Built-in AddPac APOS Internetworking Software**
 - Scalability, Functionality, and Stability Features
 - Audio Traffic QoS Control
- **Programmable Audio, and Voice Services**
 - Audio, and Voice Codec
- **Firmware Upgradeable Architecture**
- **Industry Standard IP based Network Protocol Features**



Network Service and Features

AP-WP100 Wi-Fi IP Phone

Basic Network Protocols

- ARP, IP, IPv6, TCP, UDP, ICMP, ICMPv6, SCTP, IGMP, MLD

Routing Protocol

- IPv4 : Static
- IPv6 : Static

Service Protocol

- FTP, Telnet, TFTP, DHCP Server/Relay, SNMP Server
- CDP (Cisco Discovery Protocol)
- DNS Resolver , DDNS(nsupdate)
- Bridge
- Syslog
- IPv4/IPv6 policy control (QoS)
- VPDN (Virtual Private Dial-up Network : L2TP Server)

Network Service and Features

AP-WP100 Wi-Fi IP Phone

IPv4/IPv6 Interworking

- NAT/PAT for IPv4
- IP connect (formerly ip-share) and device cascade for IPv4
- IP/IP, IP/GRE tunneling
- NAT-PT
- 6to4, Autoconfig tunneling

IPv4 Address Configuration

- Fixed (Static)
- DHCP
- PPPoE

IPv6 Address Configuration

- Fixed (Static)
- EUI-64
- Autoconfig (Neighbor Advertisement and Solicitation)

Network Service and Features

AP-WP100 Wi-Fi IP Phone

Miscellaneous

- Cisco Style CLI
- Standard & Extended IPv4/IPv6 Access List
- Multi-level User Account Management
- IP accounting
- fsh (Embedded file system shell)
- STUN Client

Network Service and Features

AP-WP100 Wi-Fi IP Phone

SNMP MIBs

- MIB-II
- RMON MIBs (Statistics, History, Alarm, Hosts Group)
- RFC2465 Management Information Base for IP Version 6: Textual Conventions and General Group
- RFC2466 Management Information Base for IP Version 6: ICMPv6 Group
- RFC2452 IP Version 6 Management Information Base for the Transmission Control Protocol
- RFC2454 IP Version 6 Management Information Base for the User Datagram Protocol
- AddPac Enterprise MIBs
- etc

Application Area

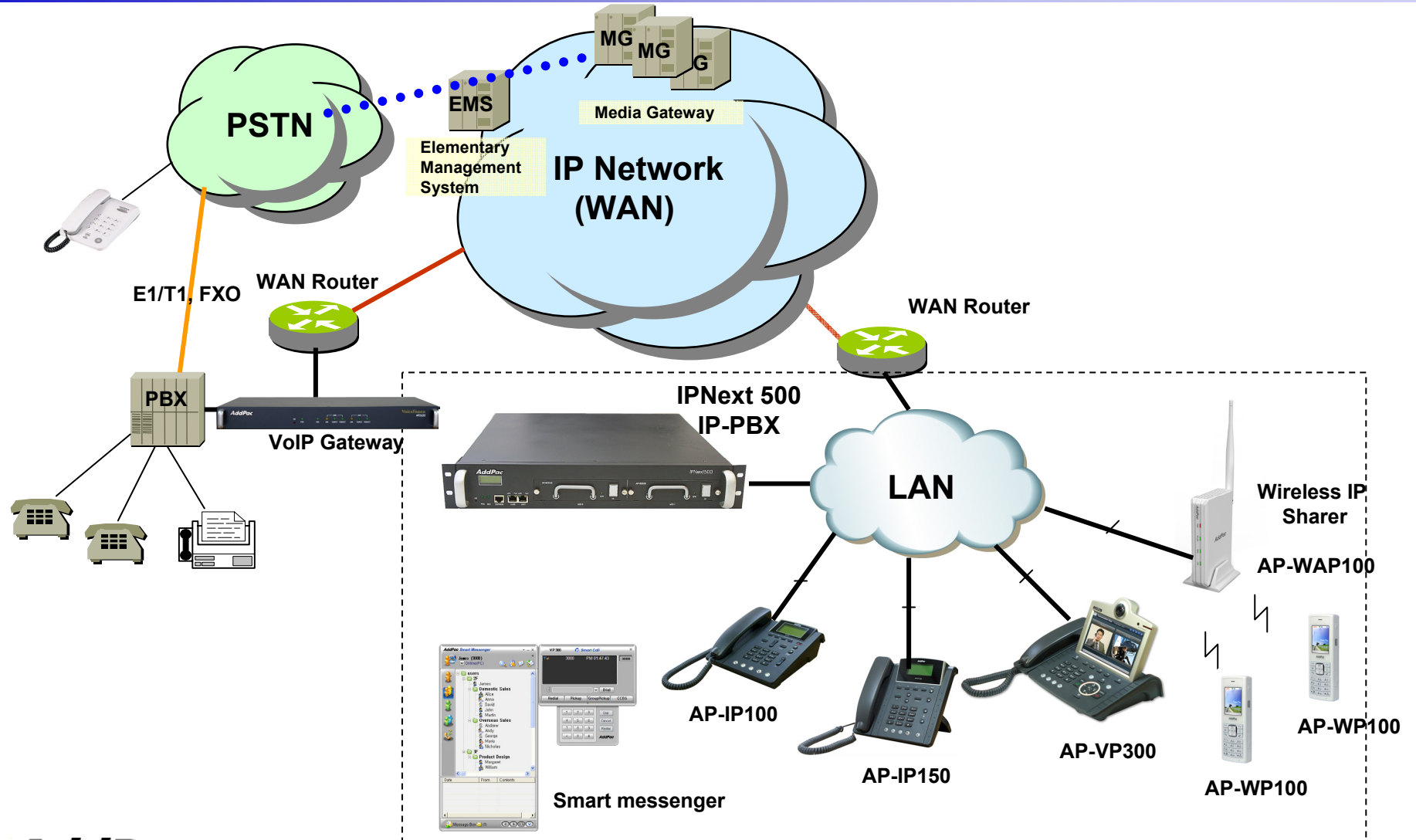
AP-WP100 Wi-Fi IP Phone

- IP-PBX IP Phone Terminal (SIP Signaling)
- IP Audio Real-time Broadcasting
- Audio Conference
- Push-talk Service
- ISP Model (Large Scale, Ex: IP Centric Service)



Standard IP-PBX Application

AP-WP100 Wi-Fi IP Phone



AddPac

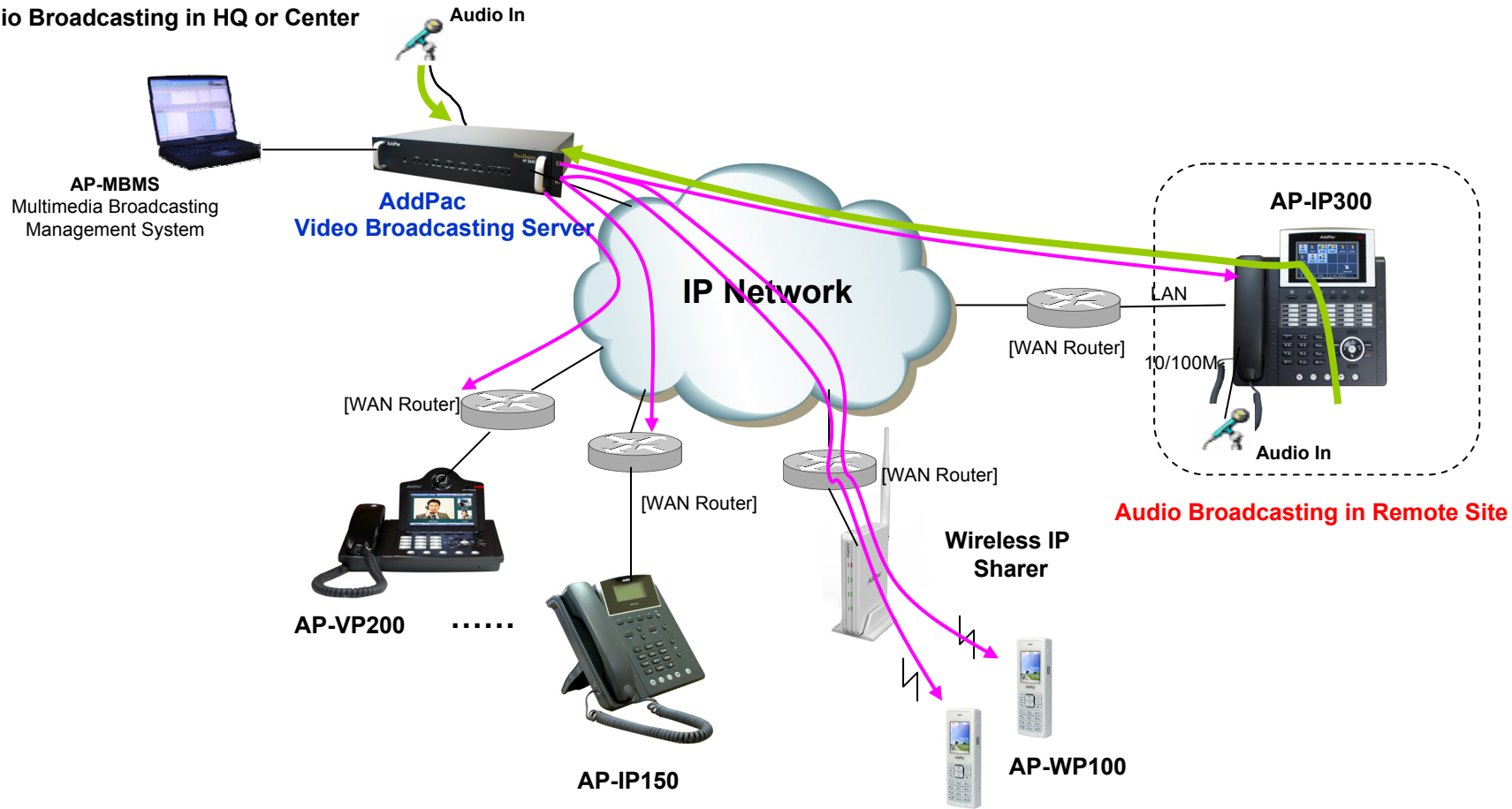
www.addpac.com

Audio Real-time Broadcasting

AP-WP100 Wi-Fi IP Phone

Remote Site Audio and Video Broadcasting Service (Video, Audio/Voice, and more...)

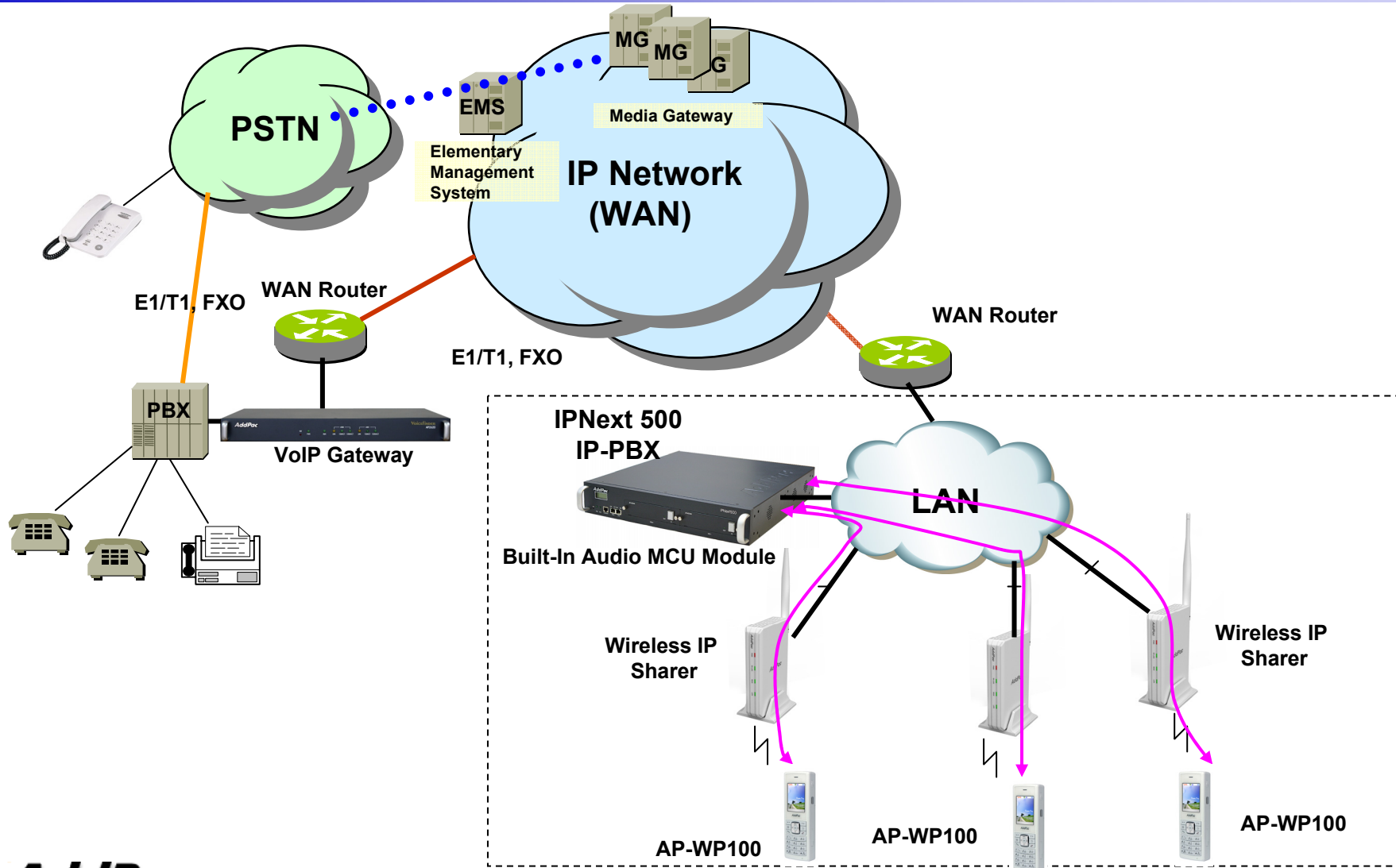
Audio Broadcasting in HQ or Center



Audio Broadcasting in Remote Site

Audio Conferencing (IPNext Built-In Audio MCU)

AP-WP100 Wi-Fi IP Phone

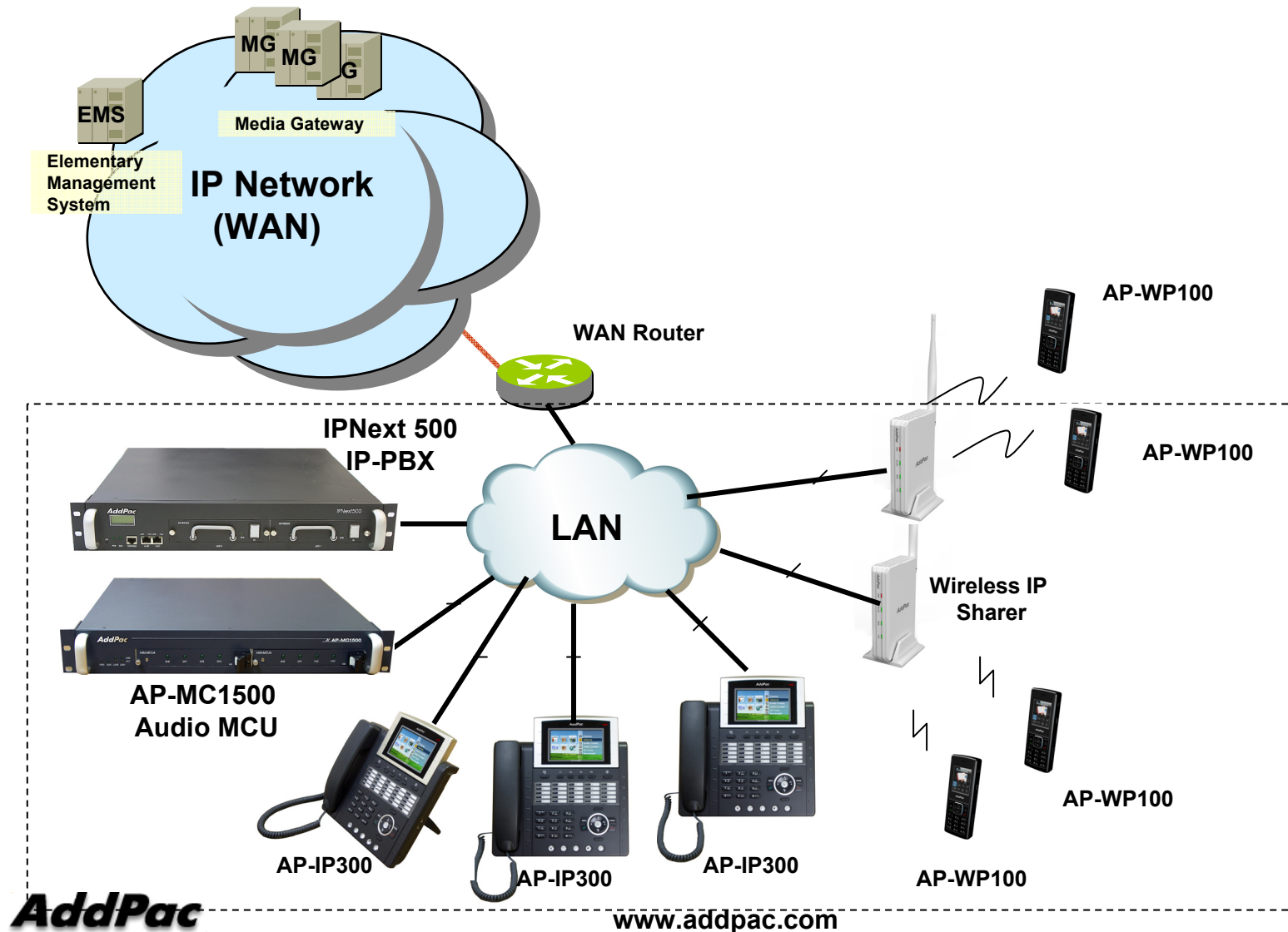


AddPac

www.addpac.com

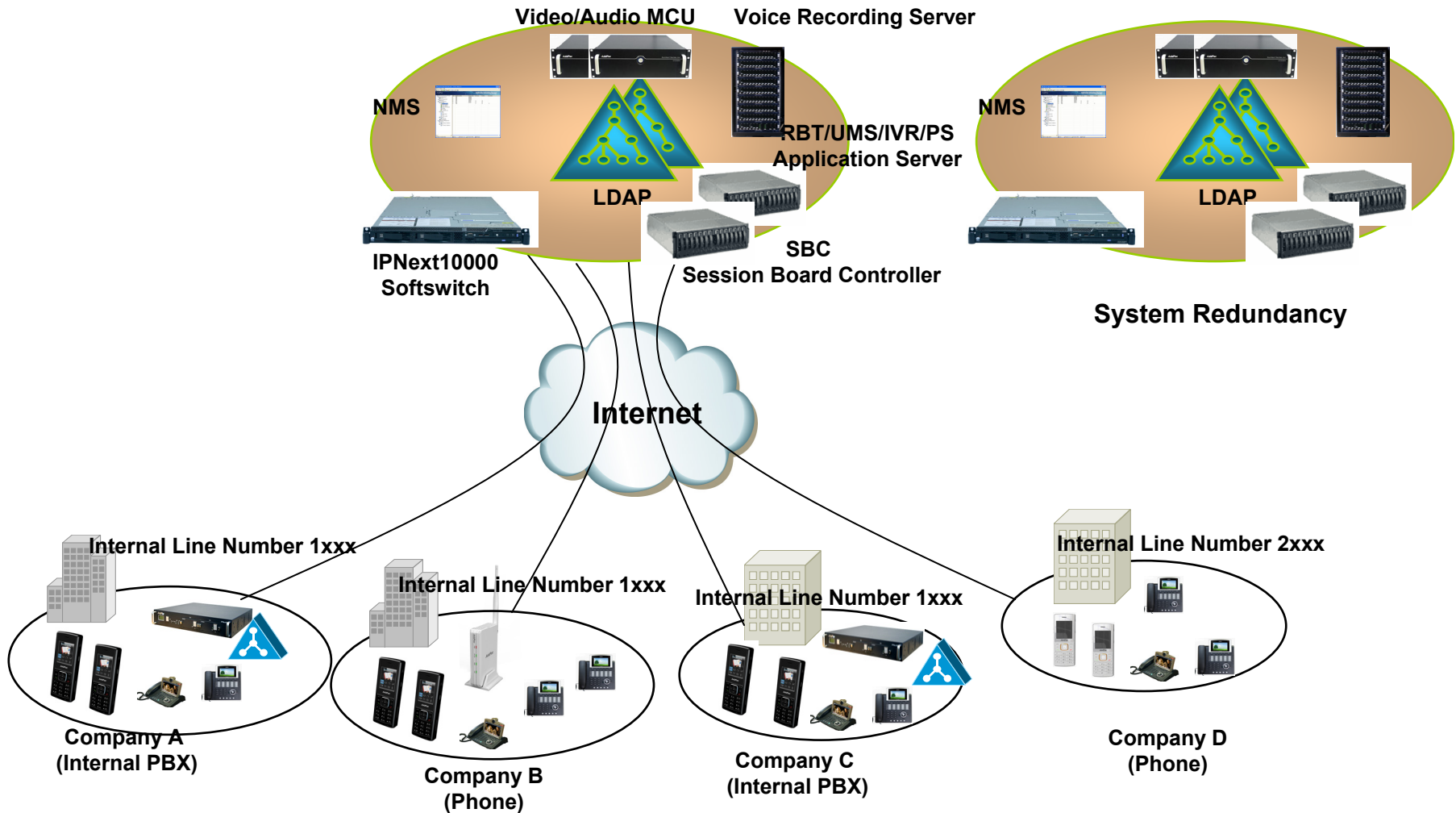
Push-talk-Service (Wire-to-Wireless)

AP-WP100 Wi-Fi IP Phone



IP Centrex Service

AP-WP100 Wi-Fi IP Phone



Ordering Information

- **AP-WP100 Wi-Fi IP Phone Hardware**
 - AP-WP100 Wifi IP Phone Main Body
 - Wifi Phone Stand with External Battery Charge Function
 - External Power Adaptor : Option
 - Including Battery Pack etc.
- **Built-in APOS Internetworking Software for AP-WP100**
- **Including 1 Year Hardware Warranty**
- **Product Documents**
 - Install and Operation Guide (PDF)
- **Pricing**
 - AddPac Technology Regional Sales Manager
 - Authorized Sales and Marketing Representatives
 - Please Contact www.addpac.com



Thank you!

AddPac Technology Co., Ltd.
Sales and Marketing

Phone +82.2.568.3848 (KOREA)

FAX +82.2.568.3847 (KOREA)

E-mail sales@addpac.com