

PassFinder AP4810

MultiService Router



Oct. 2003

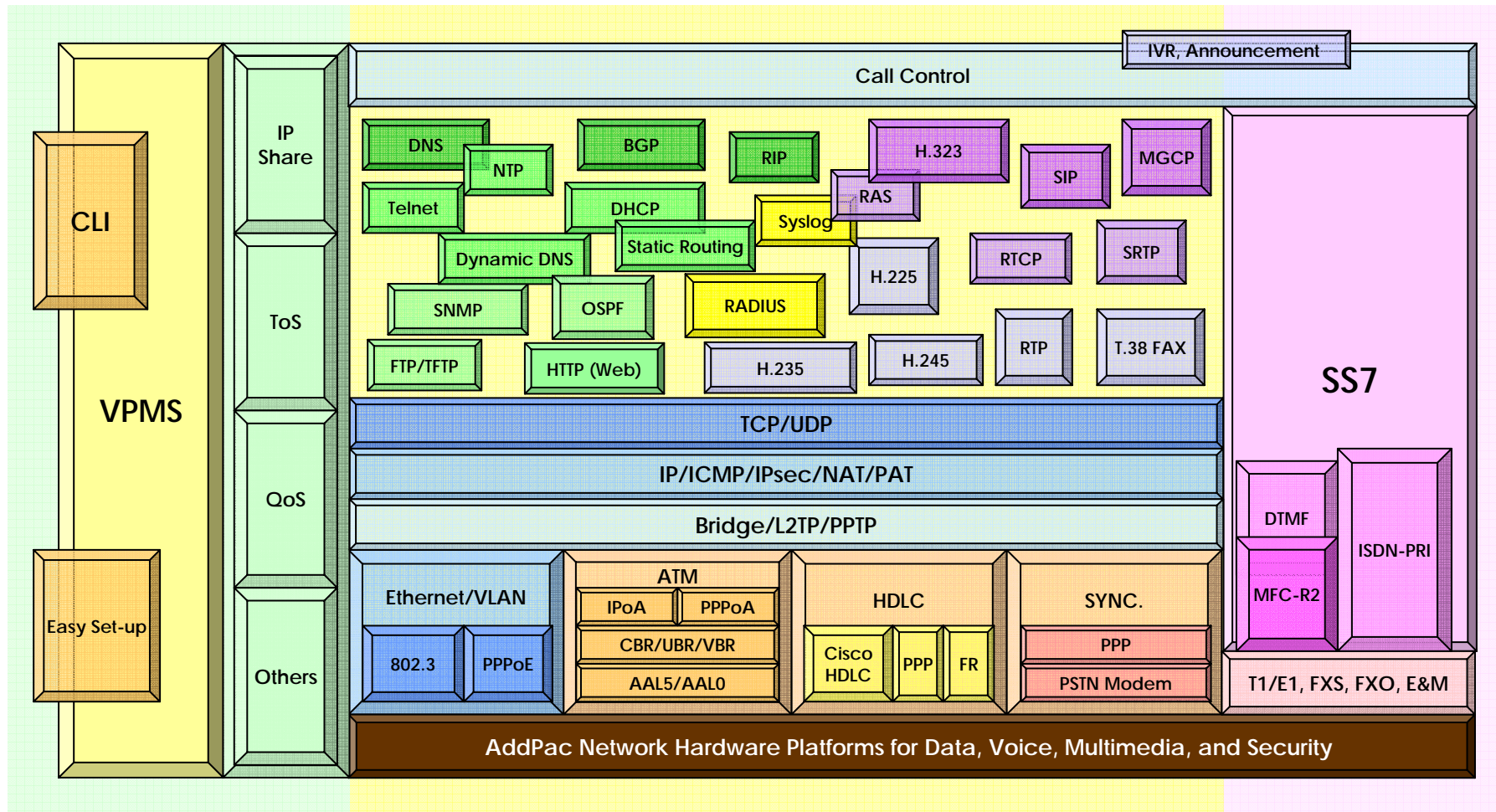
Technical Sales and Marketing

AddPac Technology

www.addpac.com

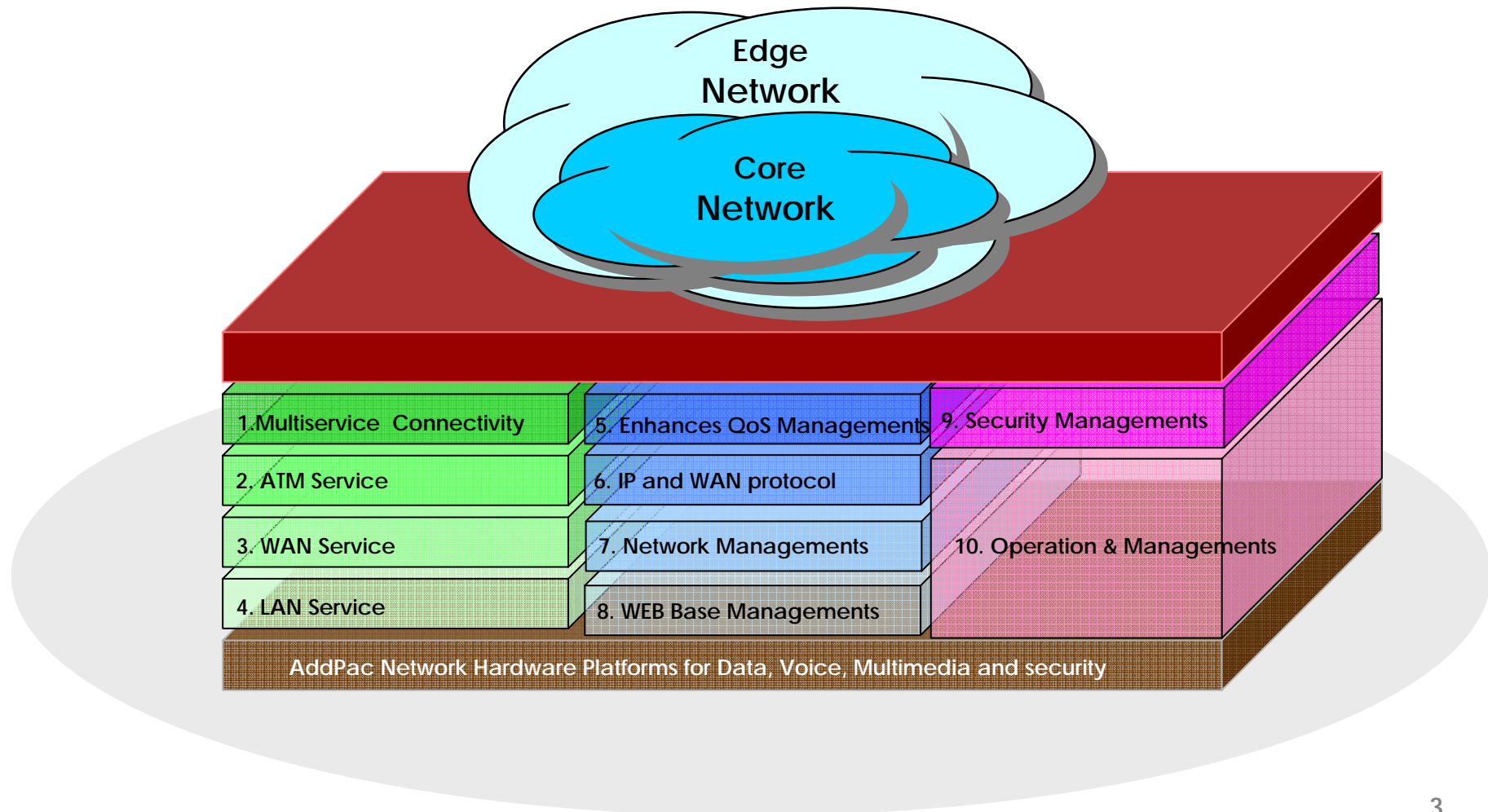
AP4810 MultiService Router Product Overview

APOS Internetworking Protocol Stack



AP4810 Multiservice Router Product Overview

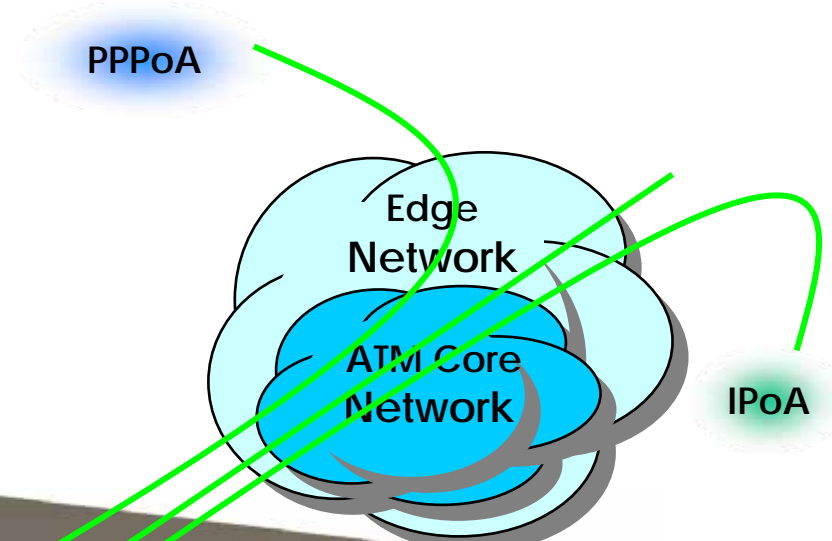
APOS Internetworking S/W World (cont.)



AP4810 Multiservice Router Product Overview

ATM Service

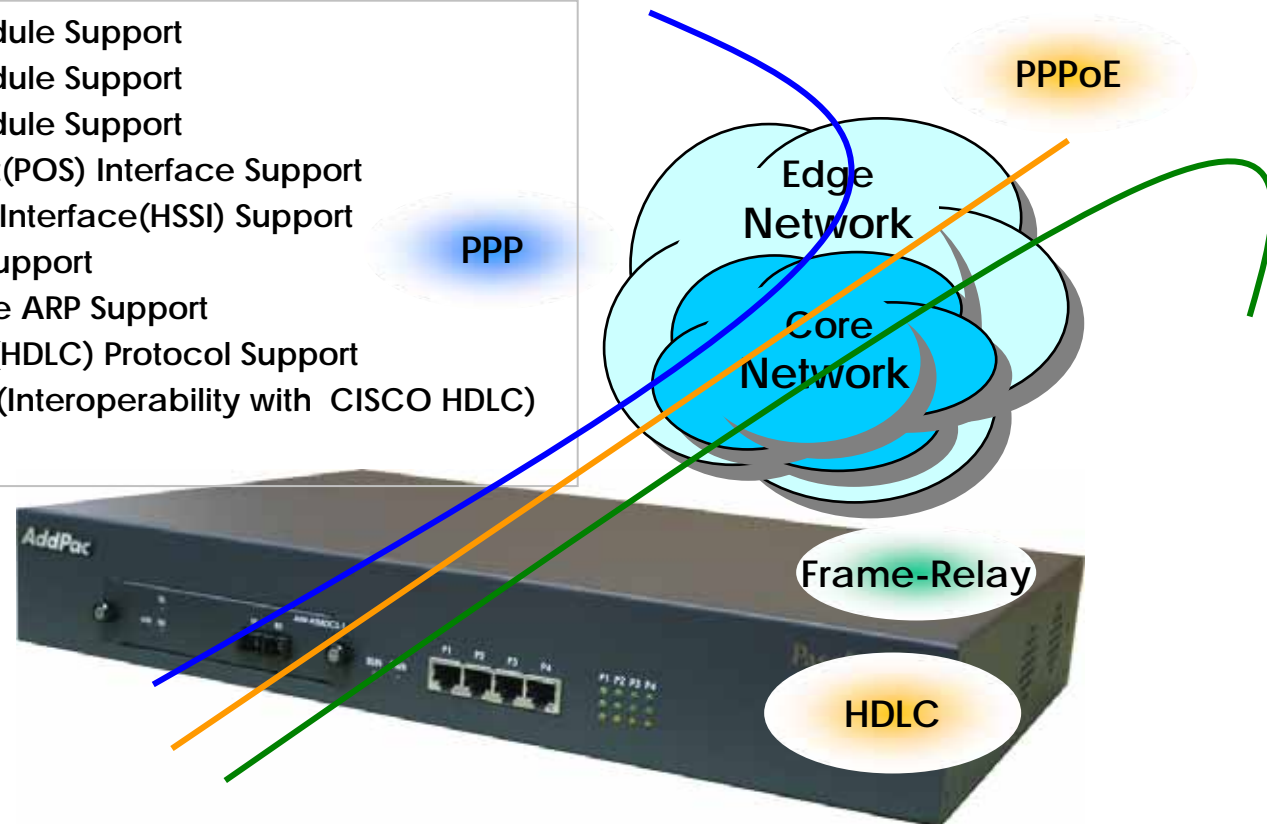
- Standard 2Mbps E1 ATM service
- Standard 45Mbps DS3 ATM service
- Standard 155Mbps OC3(STM-1) ATM Service
- ATM PVC UNI3.0, 3.1, 4.0 Support
- RFC1483 and RFC1577 based IPoA Service
- PPPoA and PPPoE Services
- ATM Classes of Service Support
 - ATM PVCs and SVCs Service
 - CBR, rt-VBR, nrt-VBR, UBR, and UBR+ Support
 - AAL0 ,AAL5
- PCR and MCR Service
- ATM Traffic Management Support
- VBR Type 1 and Type2 Support
- provide Priority Level of 8-layer with ATM Pace Control
- Traffic shaping on a per-VC basis



AP4810 Multiservice Router Product Overview

WAN Service

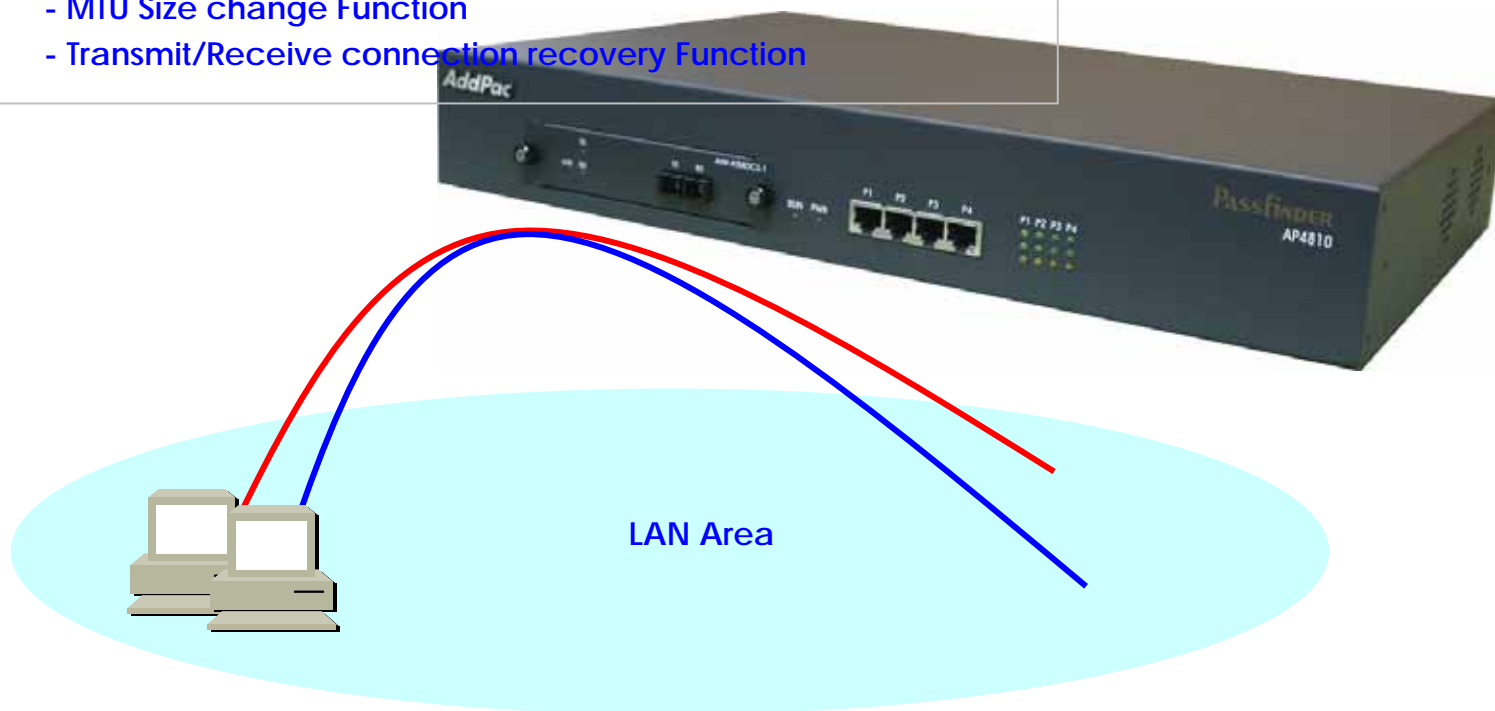
- 1 channel V.35 Interface Module Support
- 2 channel V.35 Interface Module Support
- 6 channel V.35 Interface Module Support
- 45Mbps T3 Packet over Sonet(POS) Interface Support
- 45Mbps T3 High Speed Serial Interface(HSSI) Support
- Point-to-Point Protocol(PPP) Support
- Frame-Relay PVC with Inverse ARP Support
- High-level Data Link Control (HDLC) Protocol Support
- HDLC Encapsulation Support (Interoperability with CISCO HDLC)



AP4810 Multiservice Router Product Overview

LAN Service

- Ethernet Interface
 - Four(4) Port Independent 10/100Mbps Fast Ethernet Interface
 - Auto Sensing
- Configuration Management Function
 - Port Configuration Function
 - Secondary/Subnet Support
 - MTU Size change Function
 - Transmit/Receive connection recovery Function



AP4810 Multiservice Router Product Overview

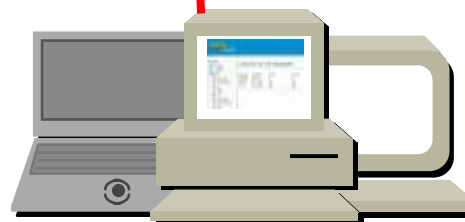
WEB Based Management

- WEB Based Management (GUI)
 - Web Based Management using HTTP Server Interface
 - Easy Setup
 - Graphical User Interface (GUI)



Ethernet

<http://a.b.c.d>



AP4810 Multiservice Router Product Overview

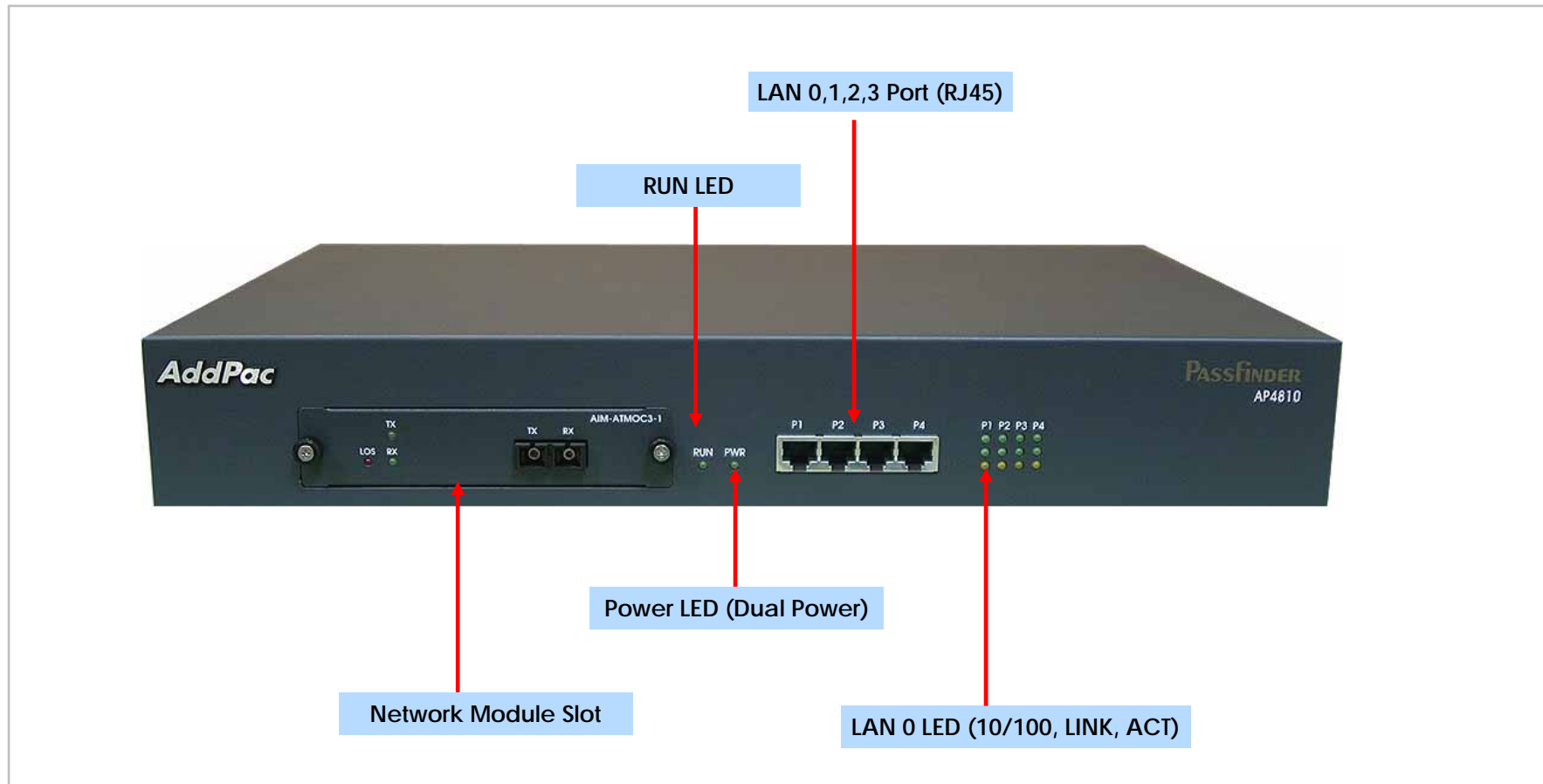
Operation & Management

- System Performance Analysis
 - Process Check Analysis
 - CPU, Connection Interface Analysis
- Configuration Management
 - APOS and Configuration Backup, Restore
 - Configuration Erase, Save
- Debugging and Diagnostics
 - Data Packet Decoding for APOS Protocols
- System Booting and Auto Rebooting
 - Fast booting into 30 second
 - Watch Dog Function for High-Availability
- System Managements
 - Data Logging and IP Traffic Statistics
 - Command HELP and History
 - Command Line Interface (CLI)



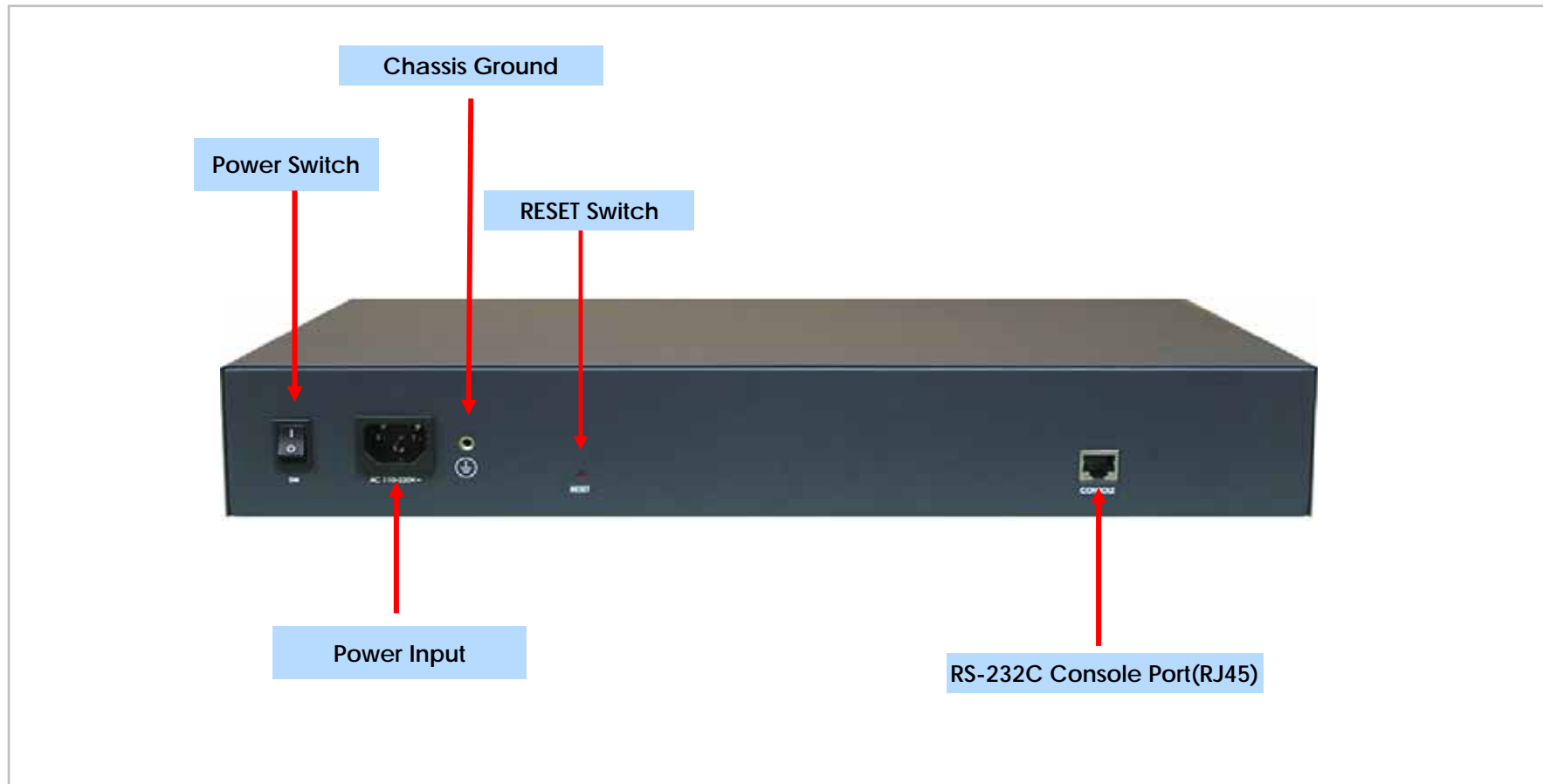
AP4810 Multiservice Router Product Overview

AP4810 Front Side Hardware Specification



AP4810 Multiservice Router Product Overview

AP4810 Back Side Hardware Specification



AP4810 Multiservice Router Product Overview

AP4810 Hardware Specification (Cont.)

AP4810 ATM Router	Basic Specifications
CPU	64Bit RISC Microprocessor
Network Modules	One(1) Multiservice Network Modules Slots
Fixed Network Interface	4-Ports 10/100Mbps Fast Ethernet Interface 1-Port Asynchronous Serial Interface (RJ45)
Network Interface Module	1-Port 2Mbps E1 ATM Interface Module (RJ45)
	1-Port 25Mbps ATM25 Interface Module (RJ45)
	1-Port 45Mbps DS3 ATM Interface Module (BNC)
	1-Port 155Mbps OC-3 ATM Interface Module
	1-Port 45Mbps T3 POS Network Module (BNC)
	1-Port 45Mbps T3 HSSI Network Module (D-Sub)
	1,2,6-Port V35 WAN Interface Module
	1Channel Audio/Video Interface Module
Memory	8Mbyte High-speed Flash Memory
	128Mbyte High-speed SDRAM
	512Kbyte Flash Memory
Power Requirement	VAC 110~ 220V Auto sensing, 50/60Hz
Operating Temperature	0°C ~ 55°C (32 °F ~ 112°F)
Storage Temperature	-40°C ~ 85°C (-40°C ~ 185°F)
Relative Humidity	5% ~ 95% (Non-condensing)
Dimensions	43mm x435mm x 248mm (H x W x D)

AP4810 Multiservice Router Product Overview

AP4810 Network Interface Module



• 2Mbps ATM Network Interface Module



• OC3(155Mbps) ATM Network Interface Module



• 25Mbps ATM Network Interface Module



• DS3(45Mbps) ATM Network Interface Module



• High Speed Serial Interface Module



• DS3(45Mbps) POS/SDH Network Interface Module

AP4810 Multiservice Router Product Overview

AP4810 Network Interface Module



• 1 Channel V.35 Network Interface Module



• 2 Channel V.35 Network Interface Module

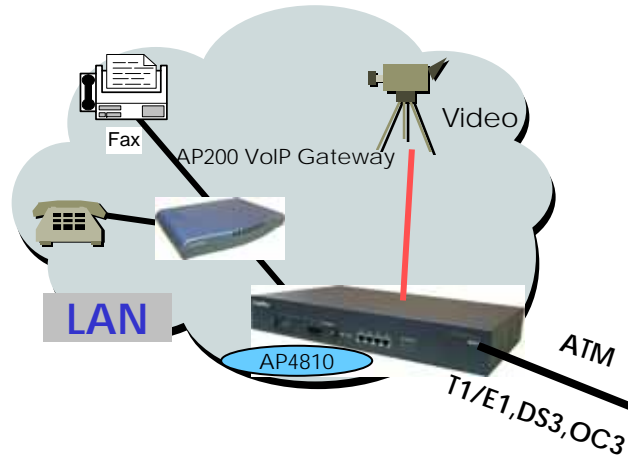


• 6 Channel V.35 Network Interface Module

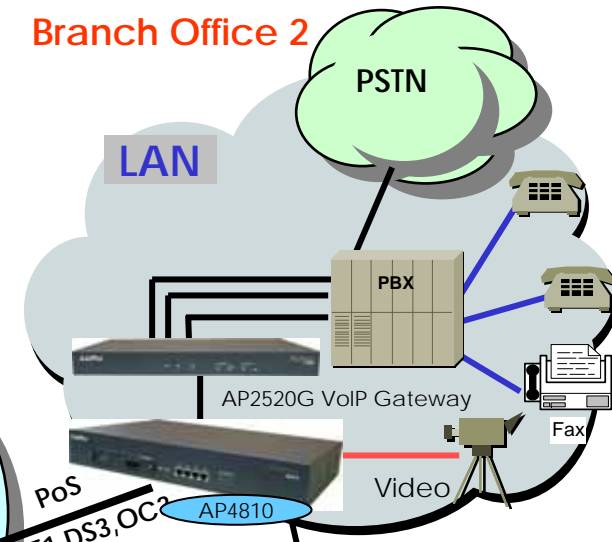
AP4810 Networking Configuration

Multi-Service and Router Application

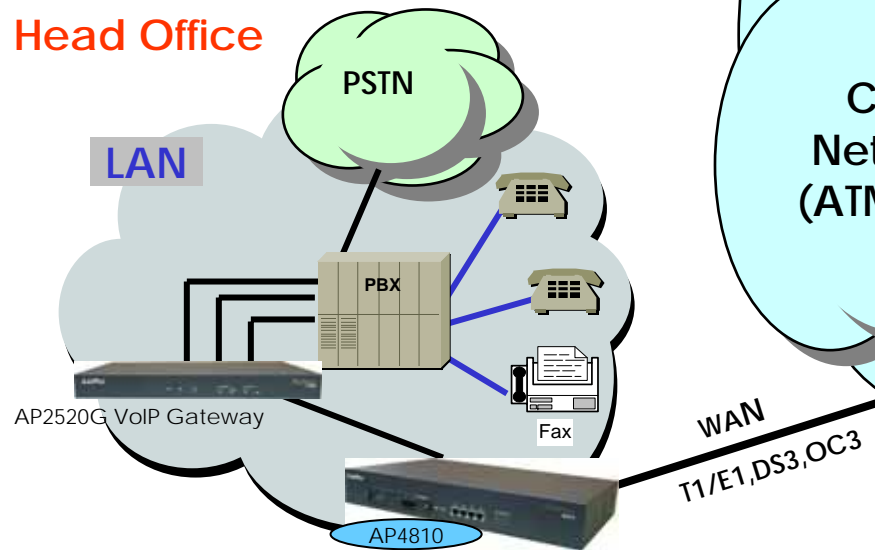
Branch Office 1



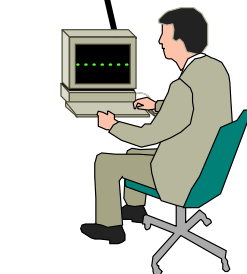
Branch Office 2



Head Office



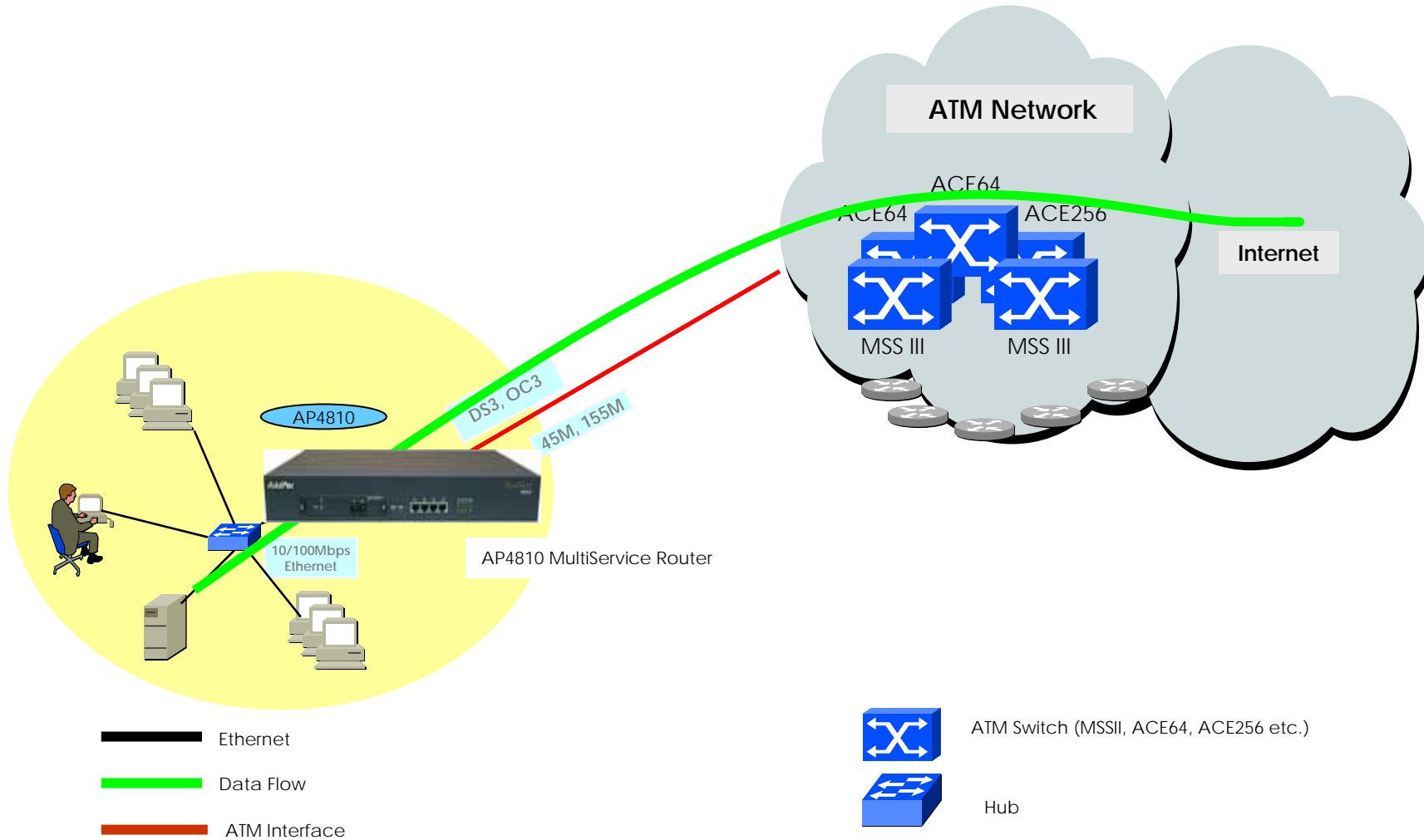
Core Network (ATM, etc)



Network Managements

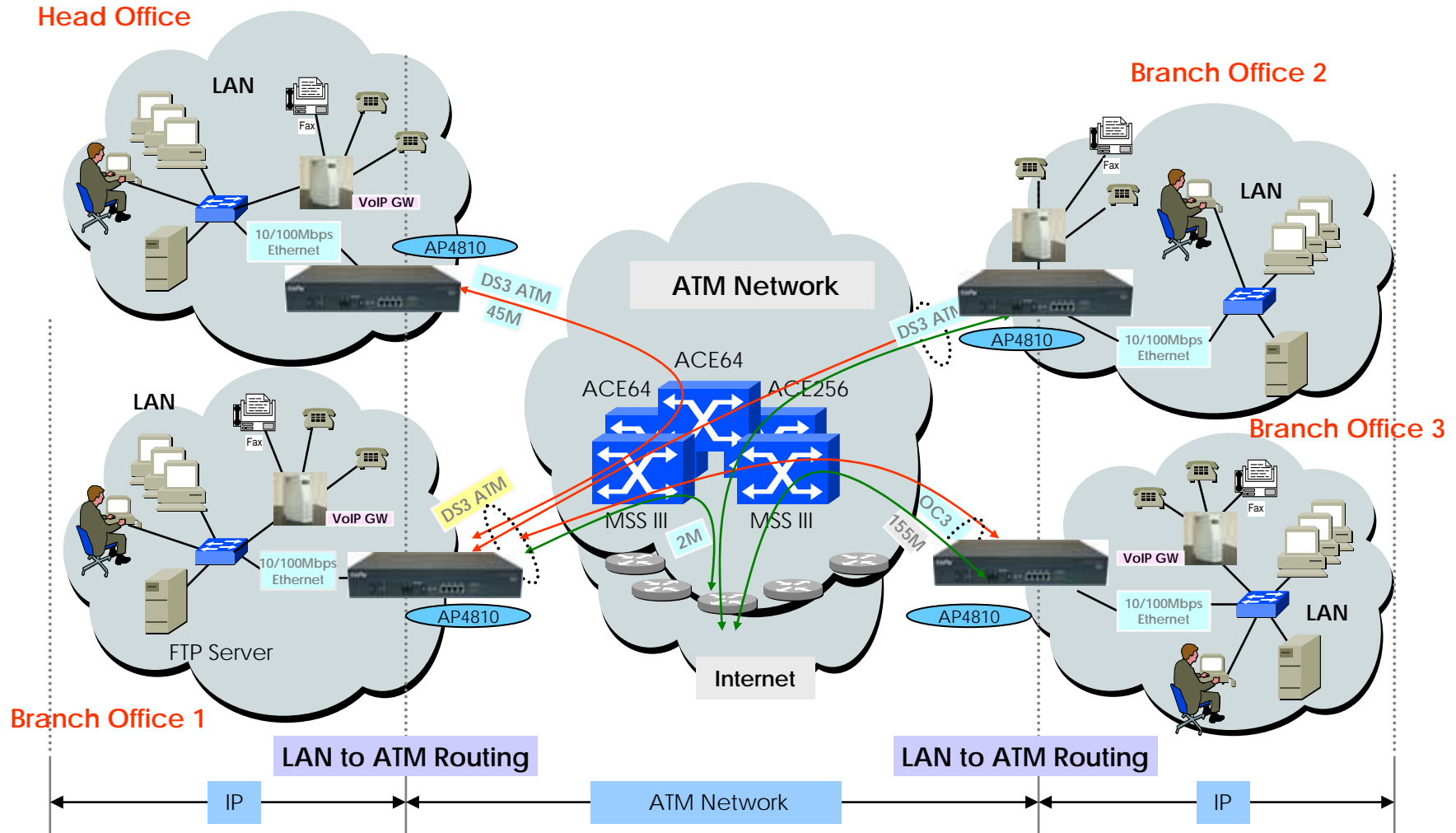
AP4810 Networking Configuration

ATM Data Service



AP4810 Networking Configuration

ATM Router Application



AP4810 Multiservice Router Product Overview

AP4810 Ordering and Pricing

- **AP4810 Multiservice Router Series**

- Order No:

- AP4810-01 : AP4810 Multiservice Router Standard Configuration

- Hardware

- High-speed 64bit RISC CPU
 - One(1) High-performance Network Module Slots for ATM, WAN, PoS, Video Interface
 - Four(4) Ports 10/100Mbps Fast Ethernet (RJ45)
 - One(1) port Async Serial Console Interface (RJ45)
 - 8MB Flash, 128MB SDRAM
 - Built-in APOS Internetworking Software
 - Dual-Power Supply Unit/AC Input(Free Voltage)
 - 1.5Ux19" Rack Mountable Chassis
 - Including CAB-LAN, CAB-CON

- CAB-LAN : RJ45 Ethernet Cable

- CAB-CON : RJ45 RS-232C Console Cable



- **Pricing**

- AddPac Technology Regional Sales Managers
 - Authorized Sales and Marketing Representatives
 - Please Contact www.addpac.com

Thank you !

www.addpac.com