

# AP-EIP90

## Emergency Call IP Phone for Outdoor Application

High Performance Emergency Call IP Phone Solution



**AddPac**

**AddPac Technology**

2013, Sales and Marketing

[www.addpac.com](http://www.addpac.com)

# Contents

- Product Overview
- Hardware Specification
- Software Service
- Audio & Voice Service and Features
- Network Service and Features
- Application Area
- Ordering Information



# Product Overview

## AP-EIP90 Emergency Call IP Phone

- High Performance Emergency Call IP Phone Solution
- Emergency Call IP Phone Solution for Outdoor Application
- Water Resistance Function Support
- Full Duplex Voice Communication
- One(1) 10/100Mbps Fast Ethernet
- PoE(Power over Ethernet) Support
- High Quality Speaker Phone Features
- SIP VoIP Signaling Stack Embedded
- Powerful Acoustic Echo Canceller Chip Embedded
- Optional External Audio In/Out Interface Support for Noisy Street Installation
- Powerful Network Protocols (PPPoE, DHCP, Static Routing, etc)
- Firmware Upgradeable Architecture
- Advanced Voice QoS Mechanism
- Die-Casting Steel Chassis

# Product Highlights

## AP-EIP90 Emergency Call IP Phone

### Outdoor Emergency Call IP Phone Solution

Emergency Button & Speaker Phone

Internal MIC & SPEAKER

Excellent Voice Quality  
G726/711/G.729/G.723 etc  
High Quality Speaker Phone  
& Sound

High Performance RISC CPU  
(Embedded DSP for Codec)

Full Duplex,  
Acoustic Echo Canceller

Various Call Control  
Scenario Support (IP-PBX)

APOS™ Technology  
Network Protocol

State-of-art Signaling  
SIP Stack

IP based Network Protocol  
& Video/Voice Traffic QoS

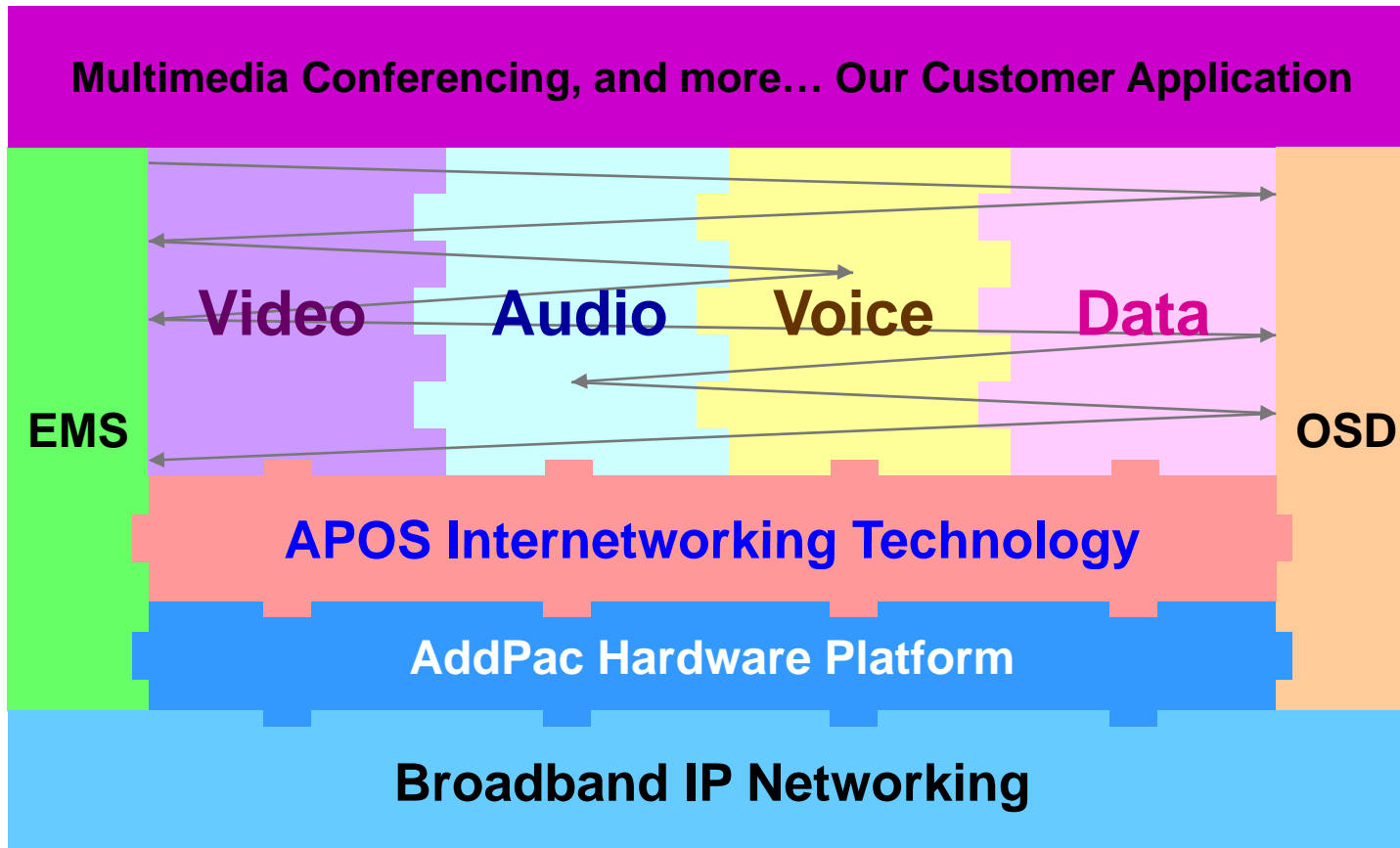
Broadband IP Networking  
With a 10/100Mbps Ethernet

Power over Ethernet Support



# Multimedia Service

AP-EIP90 Emergency Call IP Phone



- APOS : AddPac Internetworking Operating System
- OSD : On- Screen Display
- EMS : Element Management System

# Hardware Specification

## AP-EIP90 Emergency IP Phone

- RISC+DSP Microprocessor Computing Power
- Audio and Voice Interface
  - Internal MIC
  - Internal Speaker
- Emergency Call Button & LAMP
- Network Interface
  - One(1) 10/100Mbps Fast Ethernet
- Alarm & Relay Out Interface (door open, etc)
- RS232/RS485 Interface
- External RCA Audio Line Out and MIC In (back side)
- Power Supply
  - Power over Ethernet (Option)
  - External Power Adaptor
- Die-Casting Steel Chassis

# Hardware Specification

AP-EIP90 Emergency IP Phone

## Front Side



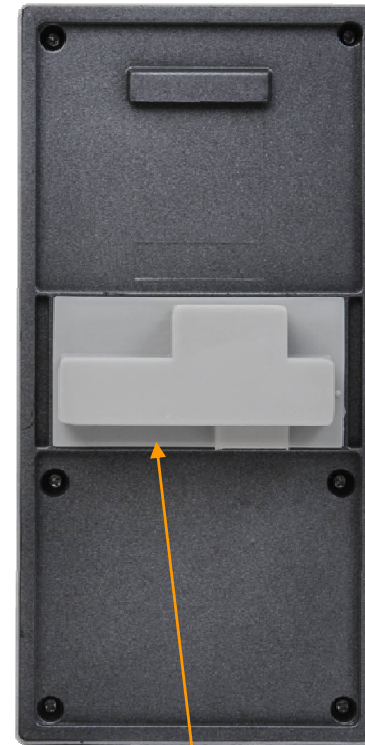
# Hardware Specification

AP-EIP90 Emergency IP Phone

## Back Side



Backside Wall Mount Bracket



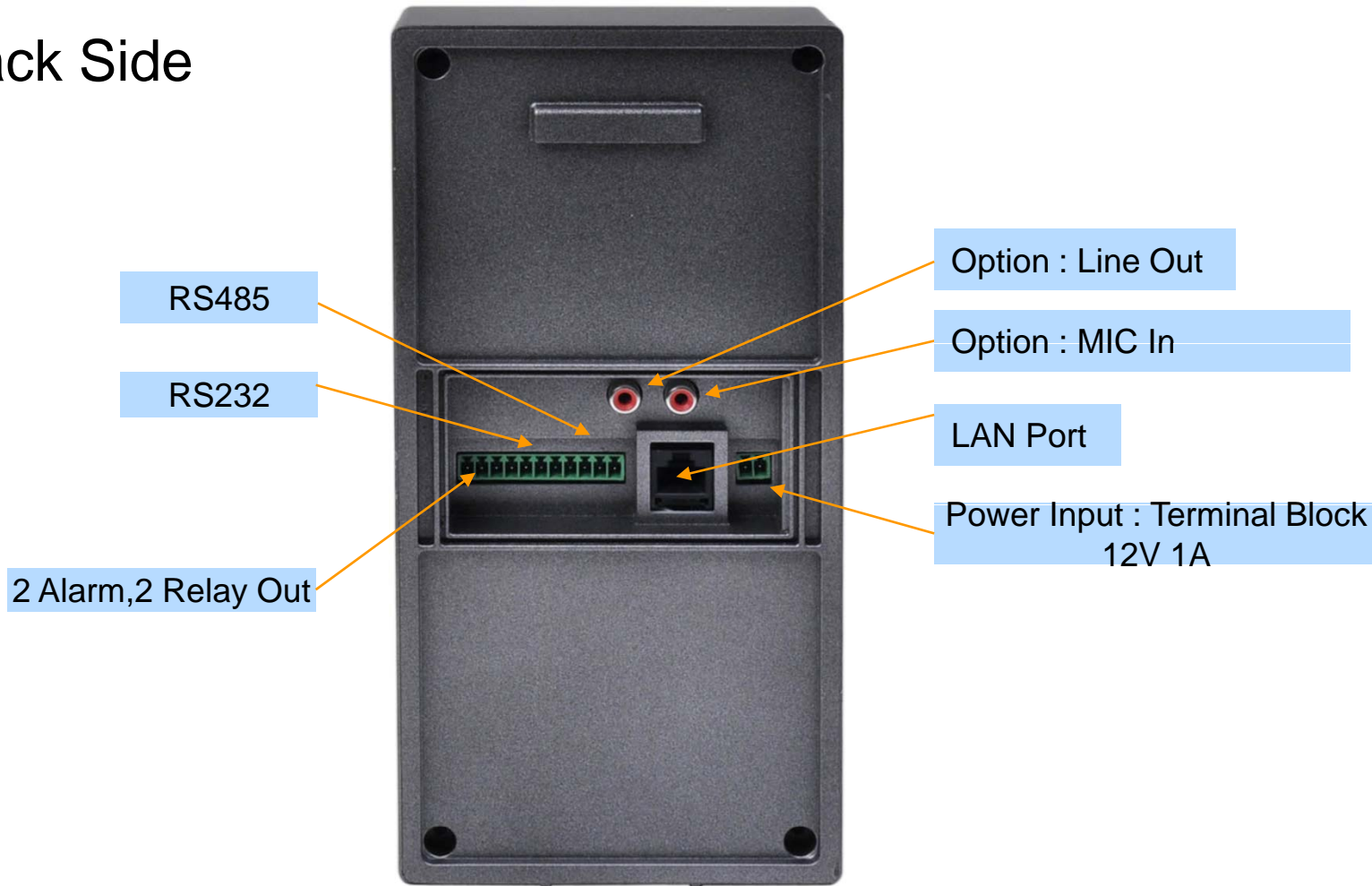
Rubber Cover for Water Protect



# Hardware Specification

AP-EIP90 Emergency IP Phone

## Back Side



# Hardware Specification

## AP-EIP90 Emergency IP Phone

### Power Supply

Terminal Block



12V 1A Power Adaptor

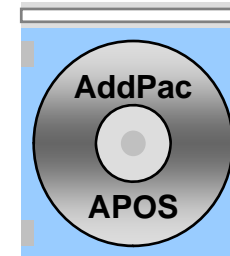
Example



# Software Service

## AP-EIP90 Emergency Call IP Phone

- Built-in AddPac APOS Internetworking Software
  - Scalability, Functionality, and Stability Features
  - Audio Traffic QoS Control
- Programmable Video, Audio, and Voice Services
  - Audio, and Voice Codec
- Firmware Upgradeable Architecture
- Industry Standard IP based Network Protocol Features



# Network Service and Features

## AP-EIP90 Emergency Call IP Phone

- Network Managements
  - Standard SNMP Agent (MIB v2) Support
  - Remote Management using Console, Telnet
  - Web based Management using HTTP Server Interface
- Security Functions
  - Standard & Extended IP Access List
  - Enable/Disable for Specific Network Protocols
  - Multi-level User Account Management
  - Auto-disconnect for Telnet/Console Sessions
  - PPP User Authentication Supports (PAP & CHAP)
- Operation & Managements
  - System Performance Analysis for Process, CPU, Connection Interface
  - Debugging, System Auditing, and Diagnostics Support
  - System Booting and Auto-rebooting with Watchdog Feature
  - System Managements with Data Logging
  - IP Traffic Statistics with Accounting

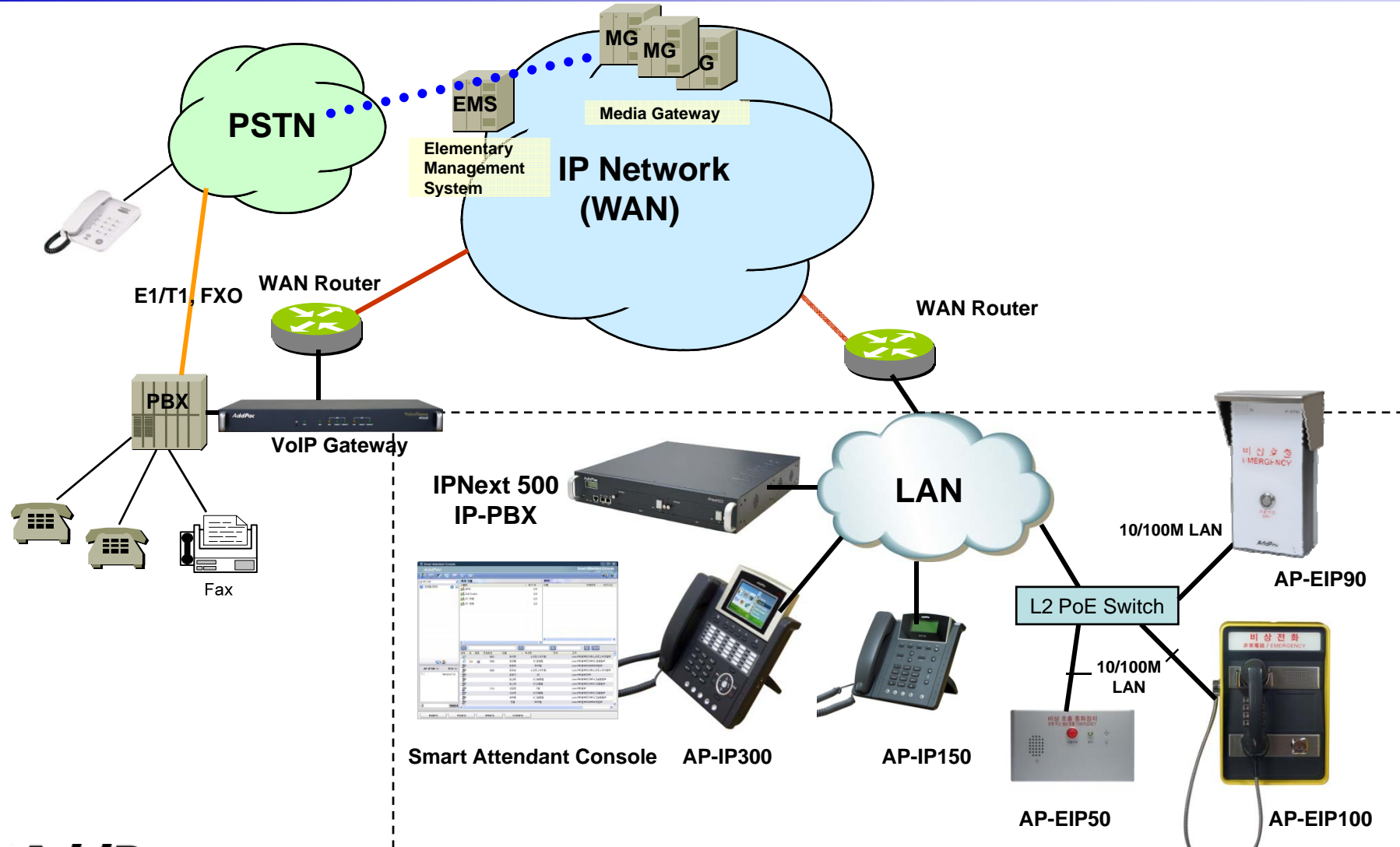
# Network Service and Features

## AP-EIP90 Emergency Call IP Phone

- Network Managements
  - DHCP Server & Relay Functions
  - Network Address Translation (NAT) Function
  - Port Address Translation (PAT) Function
  - Transparent Bridging (IEEE Standard) Function
    - Spanning Tree Bridging Protocol Support
    - Remote Bridging Support
    - Concurrent Routing and Bridging Support
  - Cisco Style Command Line Interface (CLI)
  - Network time Protocol (NTP) Support

# Standard IP-PBX Application

## AP-EIP90 Emergency Call IP Phone



# Ordering Information

- AP-EIP90 Emergency IP Phone Hardware
  - AP-EIP90 Emergency Call IP Phone Main Body
  - RISC Microprocessor with Embedded DSP Architecture
  - Internal Speaker, MIC
  - Emergency Call Button
  - One(1) 10/100Mbps Fast Ethernet
- Built-in APOS Internetworking Software for AP-EIP90
- Including 1 Year Hardware Warranty
- Product Documents
  - Install and Operation Guide (PDF)
- Pricing
  - AddPac Technology Regional Sales Manager
  - Authorized Sales and Marketing Representatives
  - Please Contact [www.addpac.com](http://www.addpac.com)



# Thank you!

**AddPac Technology Co., Ltd.**  
Sales and Marketing

Phone +82.2.568.3848 (KOREA)

FAX +82.2.568.3847 (KOREA)

E-mail [sales@addpac.com](mailto:sales@addpac.com)