



# AP-SH1000 Enterprise Smart Hub for Z Sensors

High Performance Enterprise Smart Home Solution for  
Zigbee/Zwave Sensors



**AddPac**

**AddPac Technology**

2015, Sales and Marketing

# Contents

- Product Overview
- Hardware Specification
- APOS Technology
- Network Protocols
- Network Management
- Security Management
- Application Service
- Ordering Information

# Product Overview

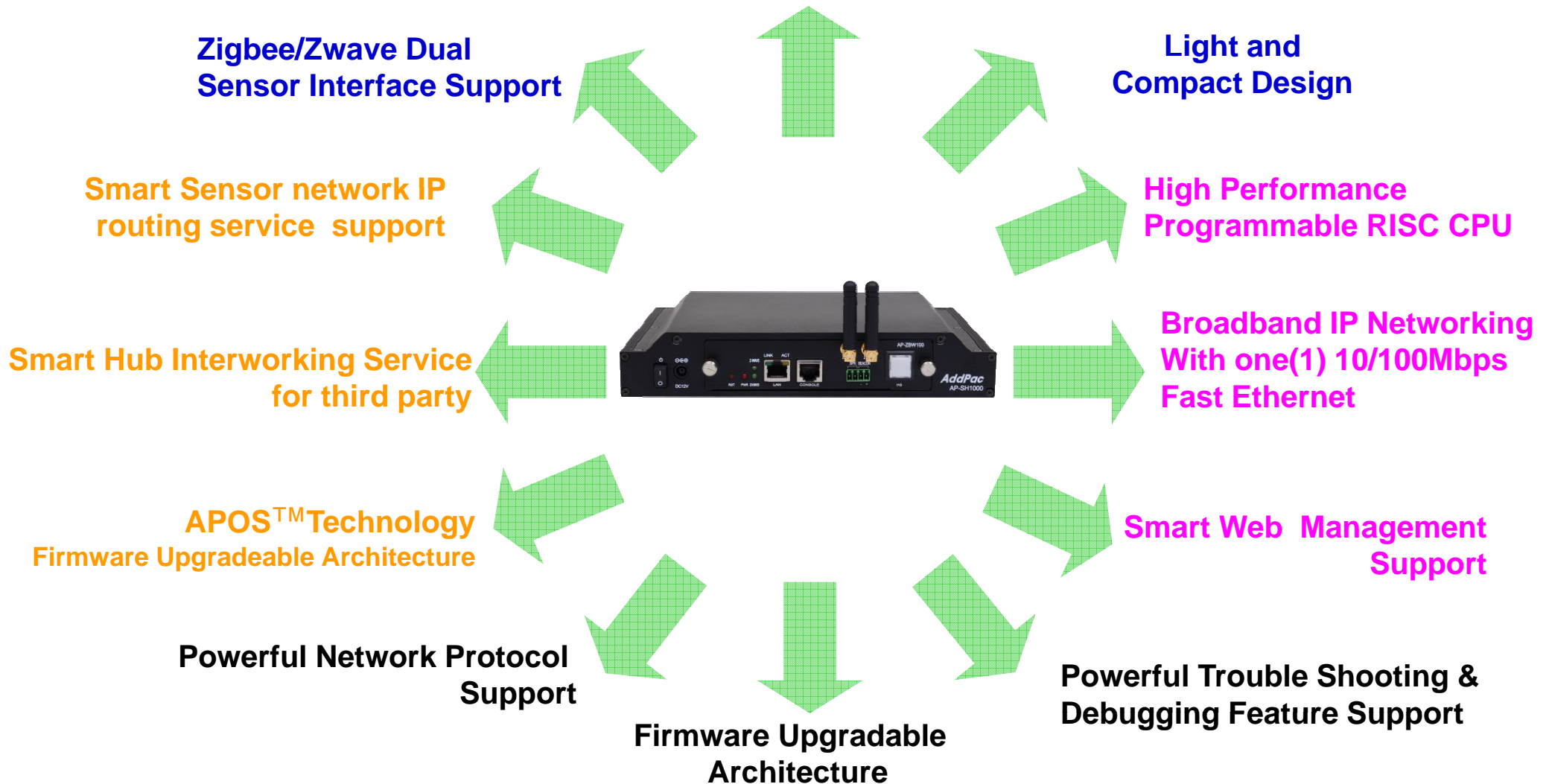
## AP-SH1000 Enterprise Smart Hub for Z sensors

- Advanced Smart Enterprise Solution
- Zigbee/Zwave Dual Sensor Interface Support
- Smart IP Routing Service Features for Sensor Network
- AddPac IoT Solution Interworking Service Features
- Smart Hub Interworking Support for Third Party
- Module Type Hardware Architecture for Flexibility and Scalability
- High Performance RISC Programmable Architecture
- One 10/100Mbps Fast Ethernet
- External Antenna Support for Zwave/ZigBee Sensor Device
- High Performance LAN-to-Zigbee/Zwave Routing Capability
- Powerful Network Protocols (PPPoE, DHCP, Static Routing, etc)
- Firmware Upgradeable Architecture
- Smart Web based Management
- Light and Compact Design with External Power Supply

# Product Highlights

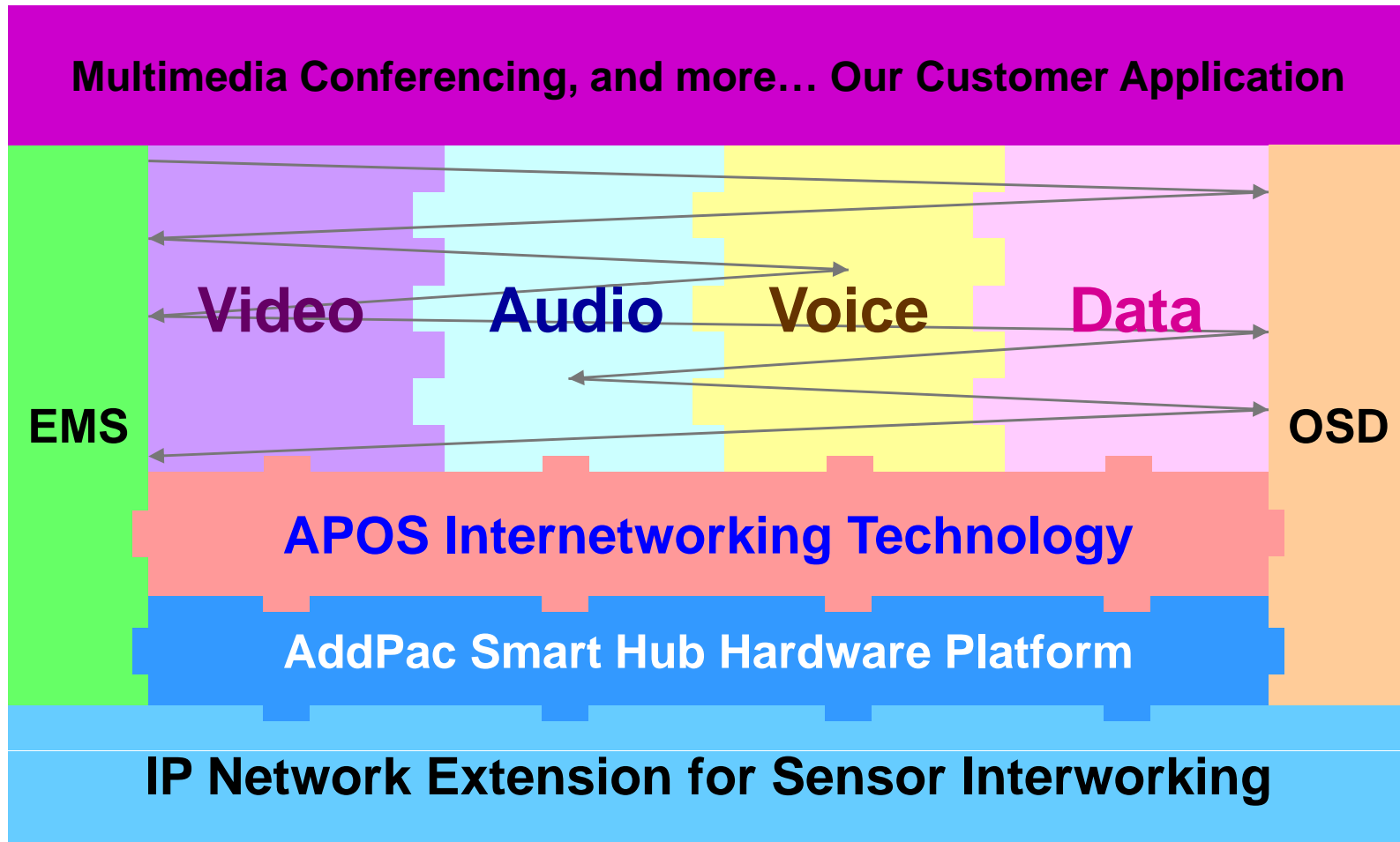
AP-SH1000 Enterprise Smart Hub for Z sensors

## Powerful Smart Hub for Z sensors



# APOS Technology

AP-SH1000 Enterprise Smart Hub for Z sensors



- APOS : AddPac Internetworking Operating System
- OSD : On- Screen Display
- EMS : Element Management System

# Hardware Specification




AP-SH1000 Enterprise Smart Hub for Z sensors

RISC  
CPU

- RISC Microprocessor Computing Power
- Z Sensor Interface Modules
  - AP-ZBW100 : ZigBee and ZWave DualInterface
  - AP-ZW100 : ZWave Interface, One(1) Antenna
  - AP-ZW104 : Zwave Interface, Four(4) Antenna
- Speaker & Beacon Port
- Network Interface
  - One(1) 10/100Mbps Fast Ethernet (RJ45)
- One(1) RS232C Console Port
- Run LED, LAN LED, etc
- External Power Supply

# Hardware Specification

## AP-SH1000 Enterprise Smart Hub for Z sensors

Module	AP-ZBW100	AP-ZW100	AP-ZW104
Specification			
ZigBee Interface	Support	N/A	N/A
ZigBee Antenna	1	N/A	N/A
ZWave Interface	Support	Support	Support
ZWave Antenna	1	1	4
Network Interface	10/100Mbps Fast Ethernet	10/100Mbps Fast Ethernet	10/100Mbps Fast Ethernet
RS232C Console	1	1	1
Speaker & Beacon Port	Support	Support	Support

# Hardware Specification

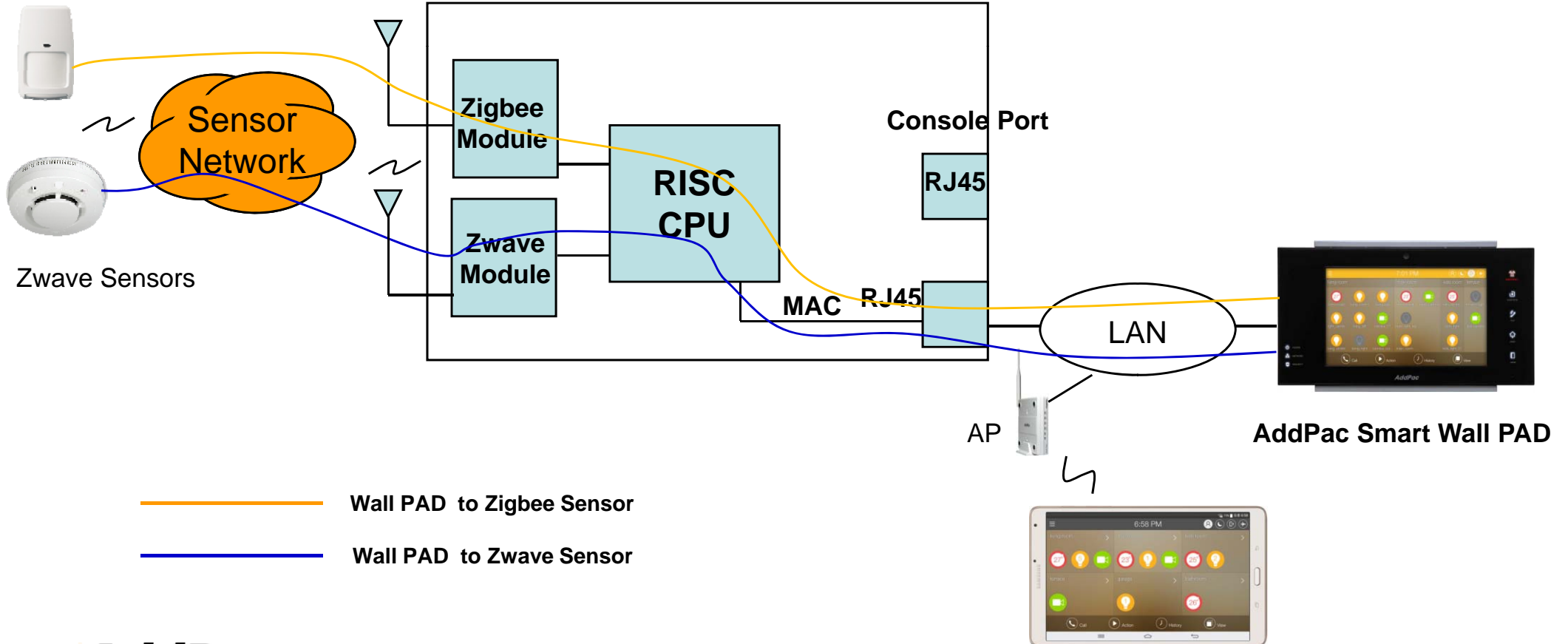
AP-SH1000 Enterprise Smart Hub for Z sensors

RISC  
CPU

## Smart Hub Service Diagram

AP-SH1000 Enterprise Smart Hub Internal H/W Block Diagram

Zigbee Sensors





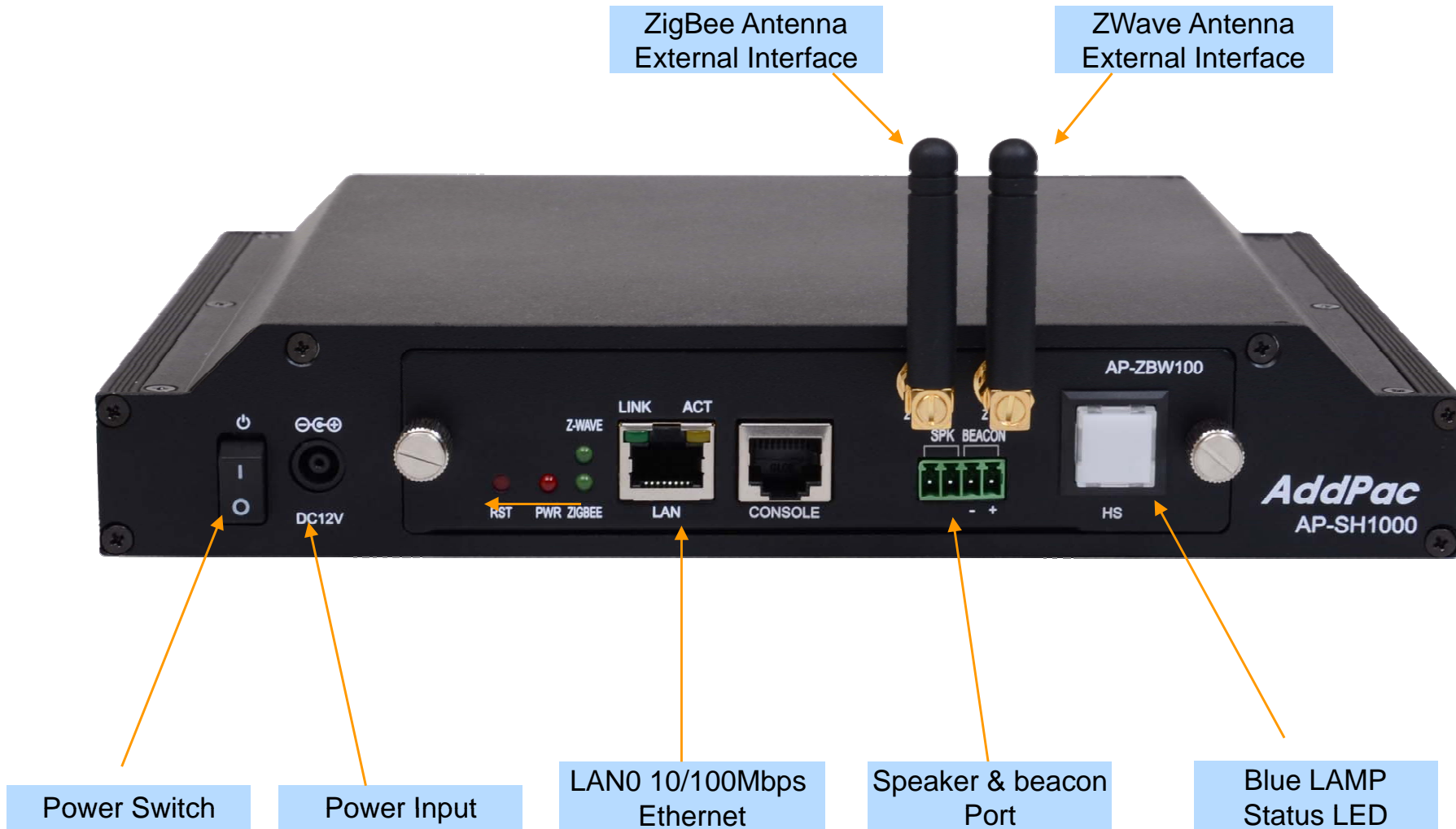
# Hardware Specification

## AP-SH1000 Enterprise Smart Hub for Z sensors

<b>AP-SH1000 Enterprise Smart Hub</b>	<b>Basic Specifications</b>
<b>AP-ZBW100 Sensor Interface Module</b>	One(1)-Port ZigBee Interface with One(1) Antenna Port
	One(1)-Port ZWave Interface with One(1) Antenna Port
<b>AP-ZW100 Sensor Interface Module</b>	One(1)-Port ZWave Interface with One(1) Antenna Port
<b>AP-ZW104 Sensor Interface Module</b>	One(1)-Port ZWave Interface with Four(4) Antenna Port
<b>Ethernet Interface</b>	1-Port 10/100Mbps Ethernet Interface(1 x RJ45)
<b>Console Interface</b>	1-Port RS-232C Console Interface ( 1 x RJ45)
<b>Flash Memory</b>	4Mbyte High-speed Flash Memory
<b>Base Memory</b>	32Mbyte High-speed SDRAM
<b>Power Requirement</b>	Power Supply Adaptor / VAC 110~220V, 50/60Hz, 12V, 1A
<b>Operating Temperature</b>	0°C ~ 45°C (32 °F ~ 122°F)
<b>Storage Temperature</b>	-40°C ~ 85°C (-40°C ~ 185°F)
<b>Relative Humidity</b>	5% ~ 95% (Non-condensing)
<b>Dimension (H x W x D)</b>	40 mm x 230 mm x 175 mm
<b>Weight (Kg)</b>	1.25Kg

# Hardware Specification

AP-SH1000 Enterprise Smart Hub for Z sensors



# Network Protocols

AP-SH1000 Enterprise Smart Hub for Z sensors

## Basic Network Protocols

- ARP, IPv4, TCP, UDP, ICMP, SCTP, IGMP, MLD

## Routing Protocol

- IPv4 : Static

## Service Protocol

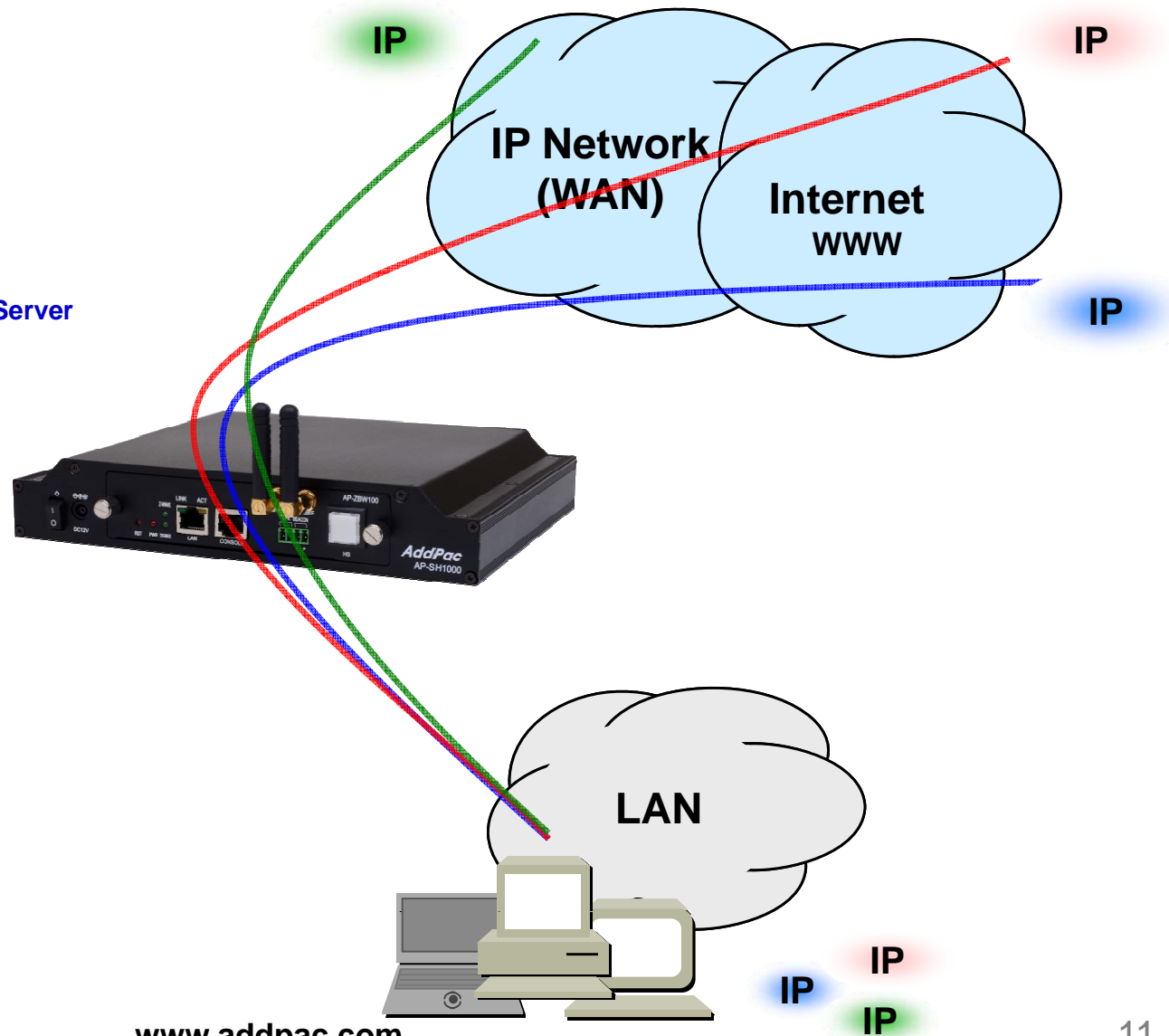
- FTP, Telnet, TFTP, DHCP Server/Relay, SNMP Server
- CDP (Cisco Discovery Protocol)
- DNS Resolver , DDNS(nsupdate)
- Bridge
- Syslog

## IPv4 Address Configuration

- Fixed (Static)
- DHCP
- PPPoE

## Miscellaneous

- Cisco Style CLI
- Standard & Extended IPv4 Access List
- Multi-level User Account Management
- IP accounting
- STUN Client



# Network Management

## AP-SH1000 Enterprise Smart Hub for Z sensors

- **SNMP**

- Standard Simple Network Management Protocol( SNMP) Agent support
- MIB v1 and v2 Support

- **Web-based Management**

- Smart Easy Setup
- Standard Voice Interface
- Standard PSTN Back-up Interface

- **Watch-dog Function**

- Hardware, Software watch-dog services

- **Remote Management**

- Telnet
- Rlogin

- **Auto Upgrade Service**

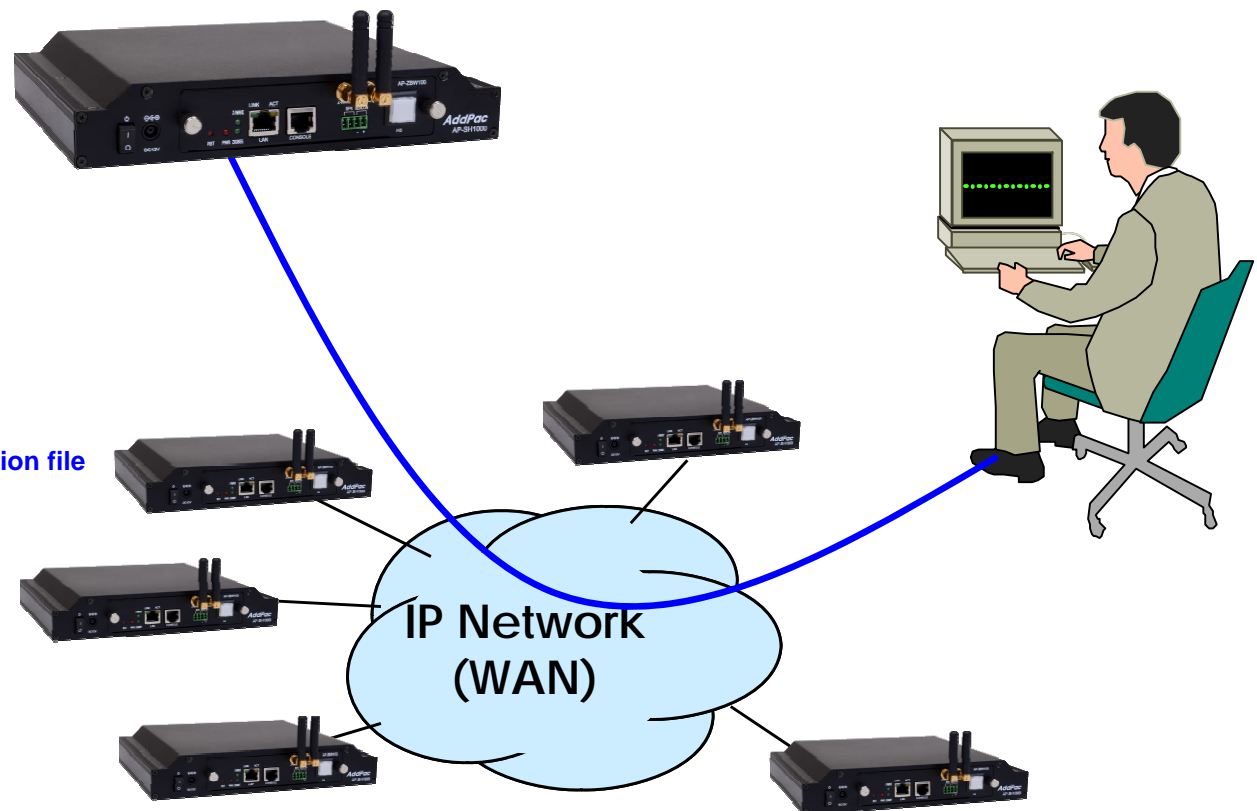
- HTTP server based APOS image and configuration file auto-upgrade support

- **Batch Job Function**

- Text based script downloading

- **Interoperable with AP-NMS Service**

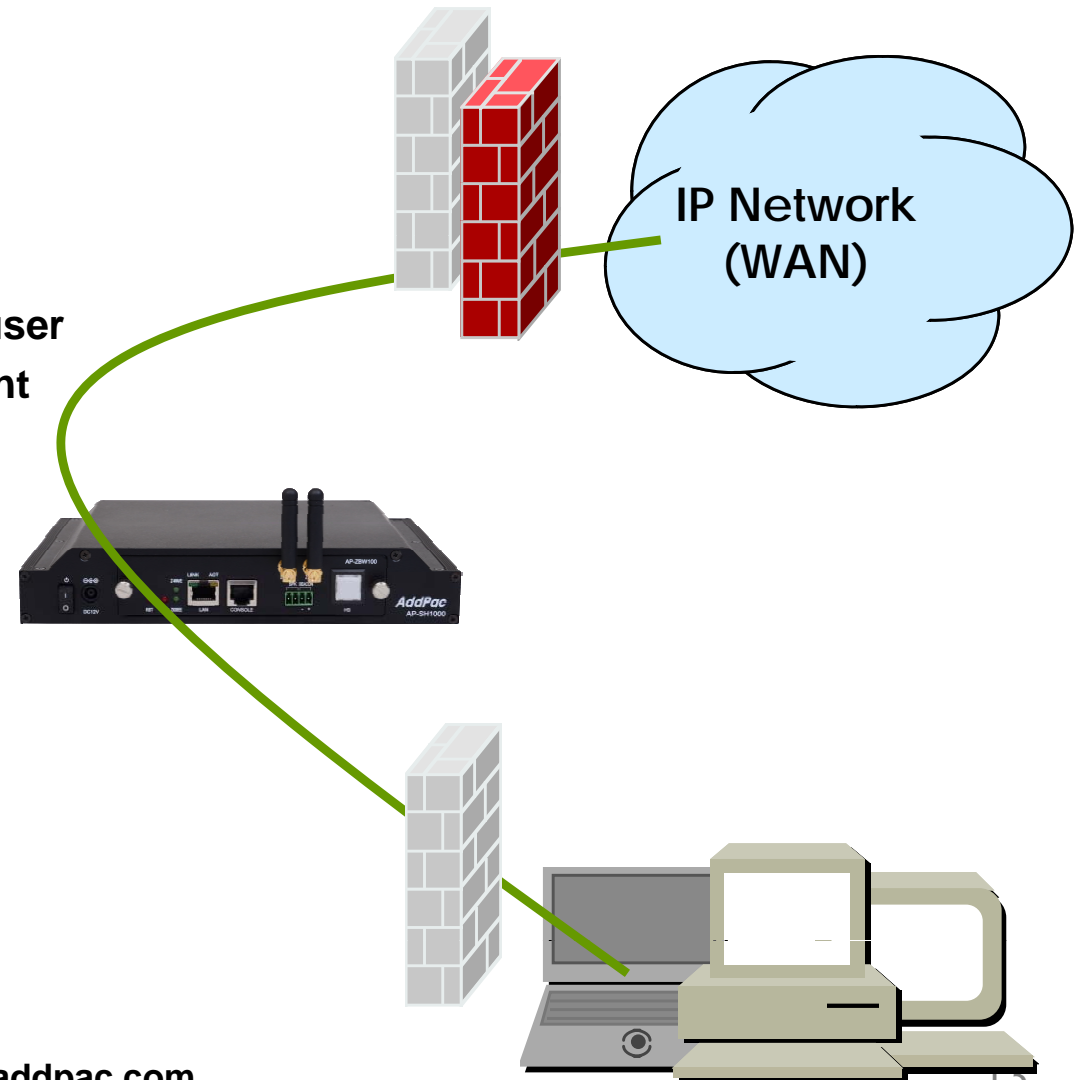
- AddPac Smart Network Management System



# Security Management

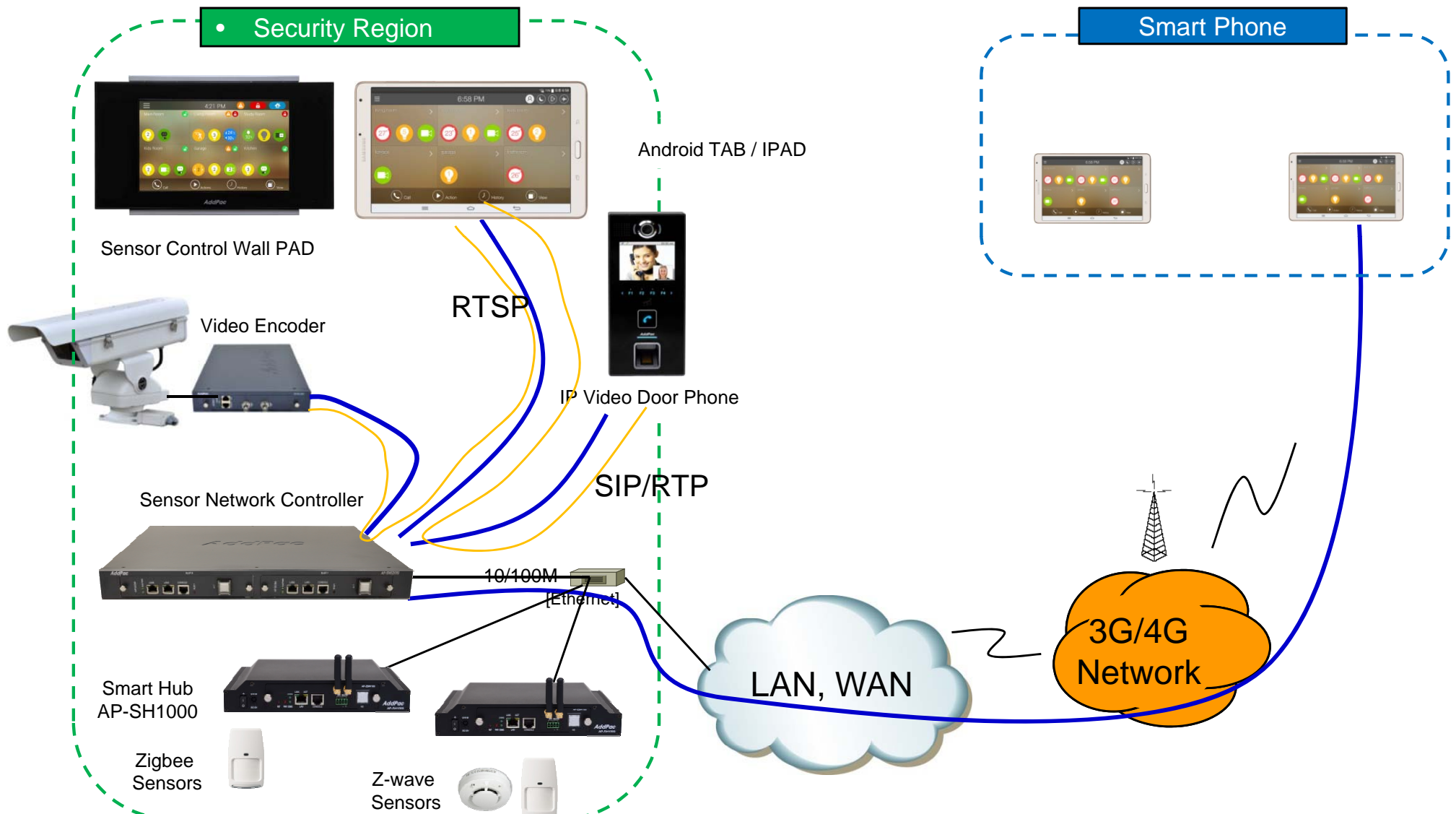
AP-SH1000 Enterprise Smart Hub for Z sensors

- IP packet filtering
- IP access list
- User authentication function
  - Password Authentication Protocol (PAP)
  - Challenge Handshake Authentication Protocol (CHAP)
- Enable/Disable specific protocols
- Auto-square connect of Telnet session
- Account Management function for multi-level user
- SNMP/TELNET/FTP/HTTP/TFTP port assignment function
- SNMP/TELNET/FTP access list management
- Boot mode security checking function



# Standard Application

## AP-SH1000 Enterprise Smart Hub for Z sensors



# Ordering Information

- **AP-SH1000 Enterprise Smart Hub Hardware**
  - AP-SH1000 Enterprise Smart Hub Main Body
  - Sensor Modules : AP-ZBW100, AP-ZW100, AP-ZW104
  - Including Network Cable, Antenna & Ext. Power Supply, etc.
- **Built-in APOS Internetworking Software for AP-SH1000**
- **Including 1 Year Hardware Warranty**
- **Product Documents**
  - Install and Operation Guide (PDF)
- **Pricing**
  - AddPac Technology Regional Sales Manager
  - Authorized Sales and Marketing Representatives
  - Please Contact [www.addpac.com](http://www.addpac.com)

# Smart Hub Series

# Thank you!

**AddPac Technology Co., Ltd.**  
Sales and Marketing

Phone +82.2.568.3848 (KOREA)

FAX +82.2.568.3847 (KOREA)

E-mail [sales@addpac.com](mailto:sales@addpac.com)