

AP-SHC300

Smart Hub Control PAD

High Performance ZWave/ZigBee Smart Hub Control PAD Solution

Preliminary Product Overview

(Without notice, following described technical spec. can be changed)



AddPac

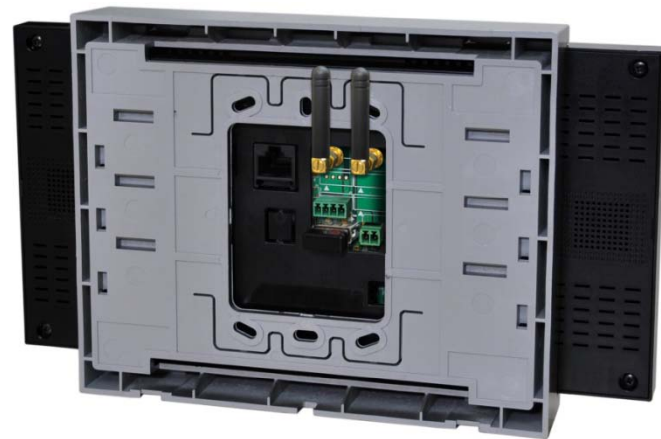
AddPac Technology

2015, Sales and Marketing

www.addpac.com

Contents

- Product Overview
- Product Highlights
- Hardware Specification
- Software Service
- Network Protocols
- Network Management
- Security Management
- Application Area
- Ordering Information



Product Overview

AP-SHC300 Smart Hub Control PAD for Z sensors

- High Performance Smart Hub Control PAD Solution for ZigBee/Zwave Sensor Devices
- Advanced Enterprise Sensor Device Control Solution
- ZigBee/Zwave Dual Sensor Interface Support
- Smart IP Routing Solution for Sensor Network
- Smart Hub + Control PAD Hybrid Solution
- TFT Color LCD, Touch Screen, Touch Sensor, Internal MIC & Speaker
- High Quality “7 Inch LCD, 800x480 Video Resolution
- Network Interface
 - One(1) 10/100Mbps Fast Ethernet
 - One(1) USB 2.0 Interface for External WiFi USB Module (Option)
- PoE(Power over Ethernet) or Internal SMPS Power Support (Option)
- Powerful Network Protocols (PPPoE, DHCP, Static Routing, etc)
- Firmware Upgradeable Architecture
- Advanced Voice QoS Mechanism

Product Highlights

AP-SHC300 Smart Hub Control PAD for Z Sensors

Powerful Smart Hub for Z sensors

IP based Smart Sensor Control
Wall PAD

ZigBee/ZWave Dual
Sensor Interface Support

Touch Screen LCD
Touch Sensor

High Performance RISC CPU
& Programmable DSP

7 Inch LCD Display
800 x 480 Resolution

Smart Hub Interworking Service
for third party

APOS™ Technology
Multimedia Network Protocol

Smart Sensor network IP
routing service support

IP based Network Protocol

Broadband IP Networking
with one 10/100Mbps ethernet,
USB 2.0 Interface for External
Wifi USB Module

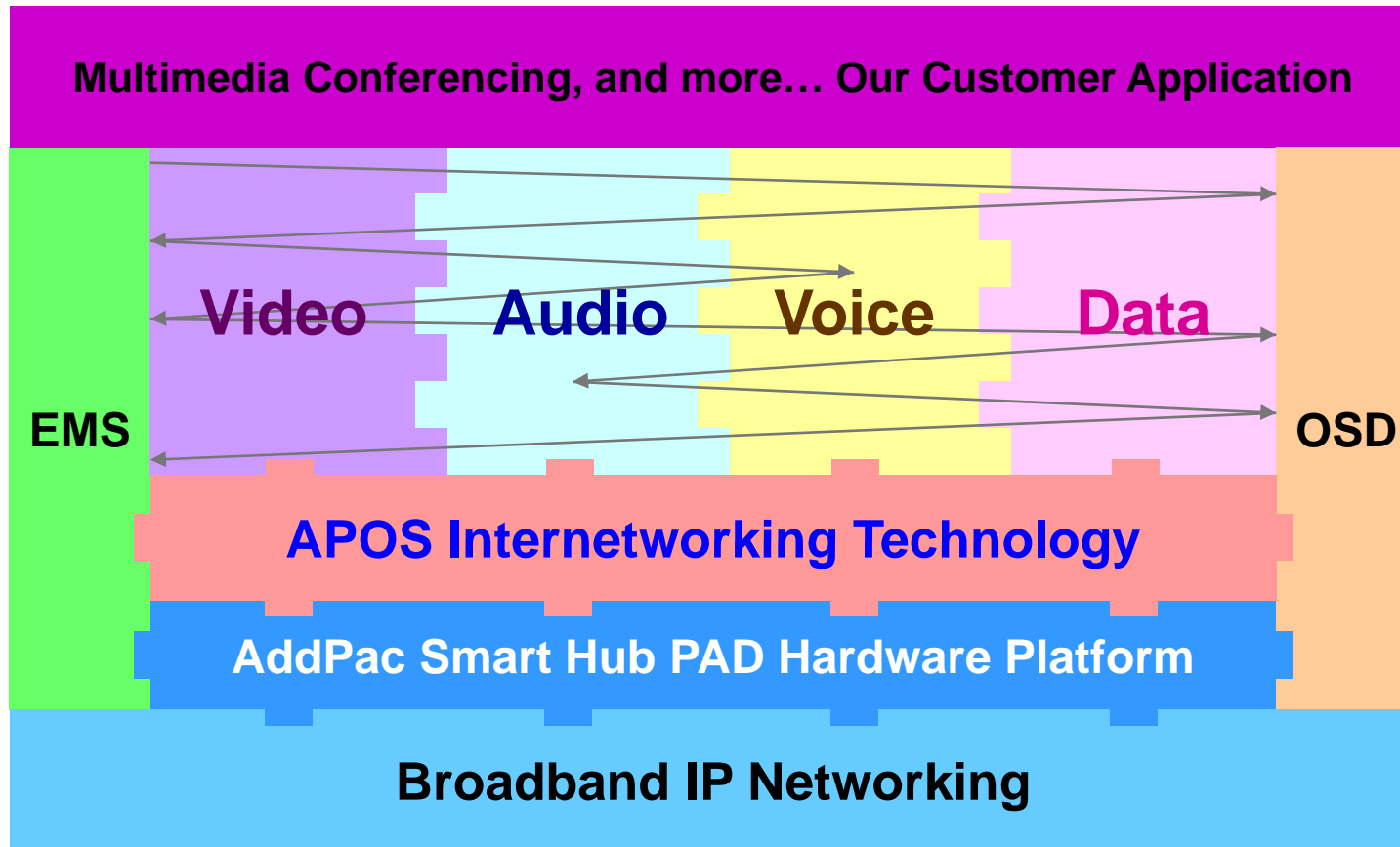
Firmware Upgradable
Architecture

www.addpac.com

AddPac

Multimedia Service

AP-SHC300 Smart Hub Control PAD for Z Sensors



- APOS : AddPac Internetworking Operating System
- OSD : On- Screen Display
- EMS : Element Management System

Hardware Specification

AP-SHC300 Smart Hub Control PAD for Z Sensors

- RISC+DSP Microprocessor Computing Power
- Audio and Voice Interface
 - Internal MIC
 - Internal Speaker
- TFT Color LCD Interface with Touch Screen
 - 7 Inch LCD, 800 x 480, D1 Video Resolution
- 1-Port ZigBee Interface + External Antenna
- 1-Port ZWave Interface + External Antenna
- Network Interface
 - One(1) 10/100Mbps Fast Ethernet
 - One(1) USB 2.0 Interface for External WiFi USB Module (Option)
- Wall Mount
- Power Supply
 - Power over Ethernet (Option)
 - Internal SMPS Power (Option)
 - External Power Adaptor (Default)

Hardware Specification

AP-SHC300 Smart Hub Control PAD for Z Sensors

- **LCD Controller**
 - One-Chip Solution for amorphous TFT-LCD
 - Support resolution up to 480xRGBx800
 - Built-in 172800 bytes internal RAM
 - 6,8,16, and 18-bit RGB Interface
 - Resize Function (x ½, x ¼)
 - On-Chip Power Management System
- **Speaker**
 - Impedance : 8 +/-15%ohm at 1kHz, 1.0 Vrms
 - Sound Pressure : 90 +/- 3dB at 0.1W/10 CM at 800Hz, 1.0kHz, 1.2kHz, 1.5kHz
 - Resonance Level : 550Hz +/- 20%Hz at Fo Hz, 1.0Vrms
 - Frequency Range : Fo Hz ~20kHz
 - Input Power : Normal : 1.0 W, Max : 2.0W
- **Audio Amplifier**
 - 1-W BTL Output(5V, 0.11 % THD+N)
 - Uncompensated Gains of 2 to 20 (BTL Mode)
 - Thermal and Shot-circuit Protection
 - High Supply Ripple Rejection Ratio
- **PoE(Power over Ethernet), Option**
 - IEEE802.3af compliant
 - Input voltage range 36V to 57V
 - Short-circuit Protection

Hardware Specification

AP-SHC300 Smart Hub Control PAD for Z Sensors

Front Side



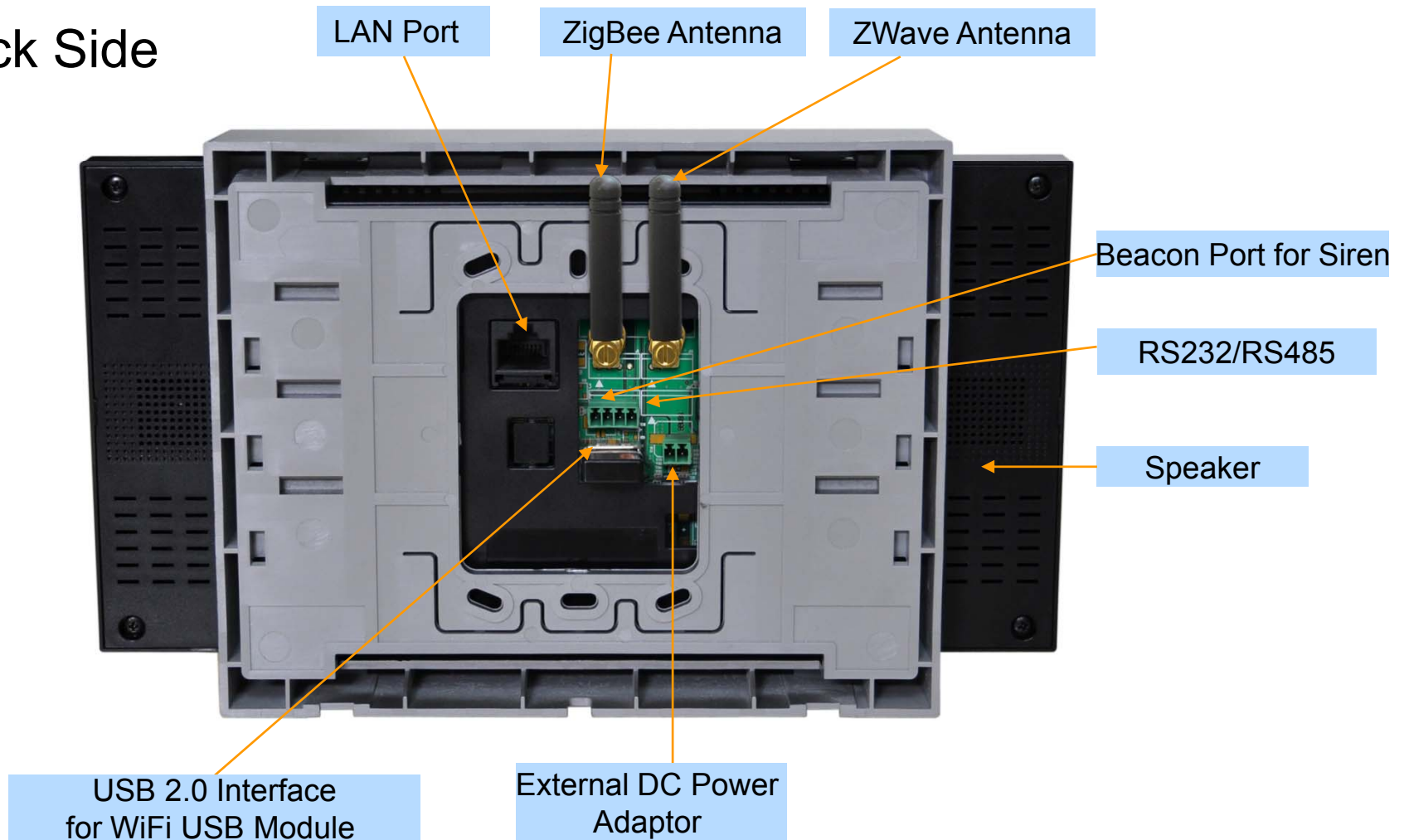
7inch
TFT LCD Display
with Touch
Screen

Internal MIC Input

Hardware Specification

AP-SHC300 Smart Hub Control PAD for Z Sensors

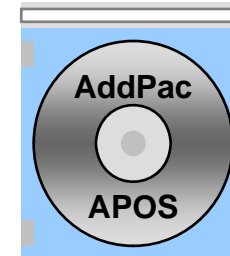
Back Side



Software Service

AP-SHC300 Smart Hub Control PAD for Z Sensors

- Built-in AddPac APOS Internetworking Software
 - Scalability, Functionality, and Stability Features
 - Smart Hub Function for Z-Sensor Devices
- Firmware Upgradeable DSP Architecture
- OSD (On-screen Display) Function Support
- Industry Standard IP based Network Protocol Features



Network Protocols

AP-SHC300 Smart Hub Control PAD for Z Sensors

Basic Network Protocols

- ARP, IPv4, TCP, UDP, ICMP, SCTP, IGMP, MLD

Routing Protocol

- IPv4 : Static

Service Protocol

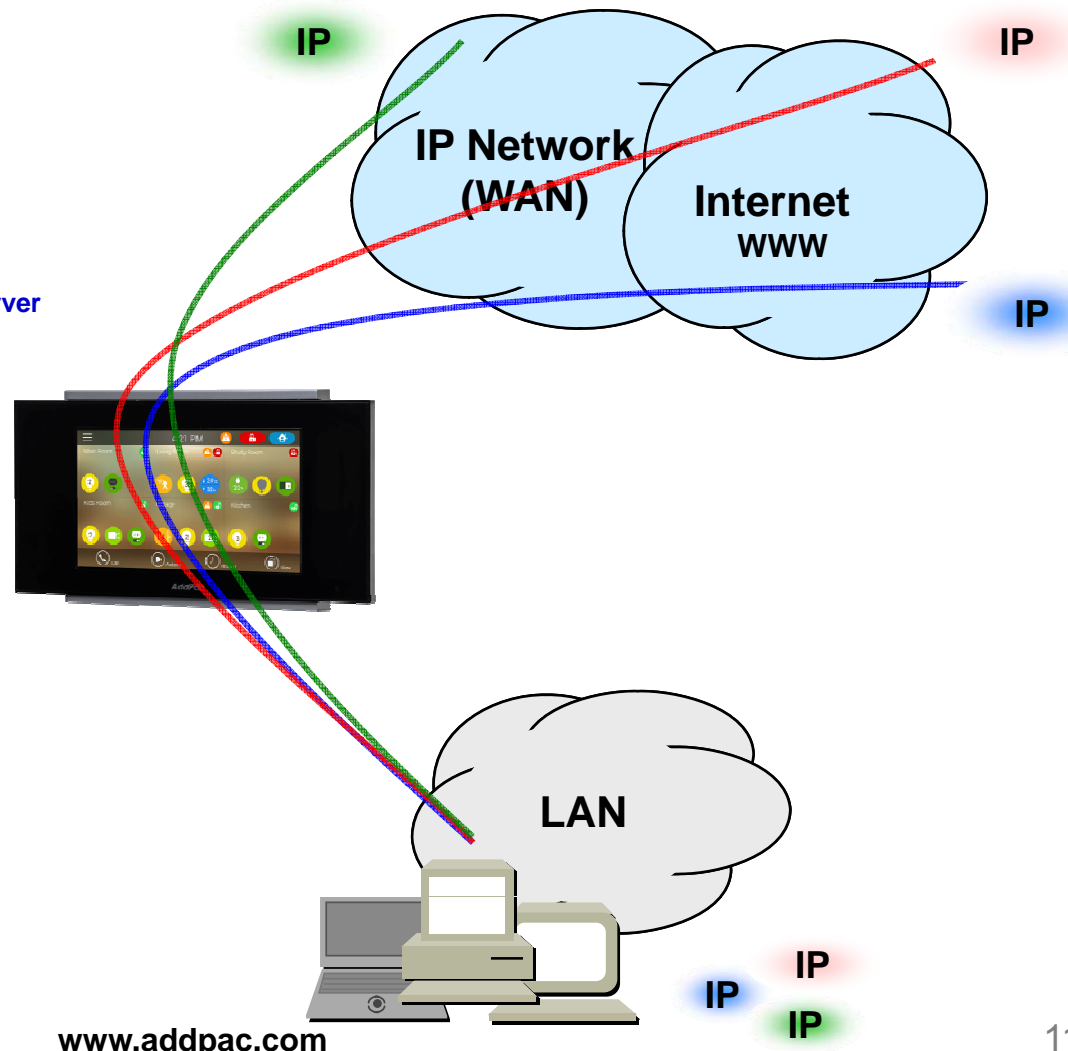
- FTP, Telnet, TFTP, DHCP Server/Relay, SNMP Server
- CDP (Cisco Discovery Protocol)
- DNS Resolver , DDNS(nsupdate)
- Bridge
- Syslog

IPv4 Address Configuration

- Fixed (Static)
- DHCP
- PPPoE

Miscellaneous

- Standard & Extended IPv4 Access List
- Multi-level User Account Management
- IP accounting
- STUN Client



Network Management

AP-SHC300 Smart Hub Control PAD for Z Sensors

- **SNMP**

- Standard Simple Network Management Protocol(SNMP) Agent support
- MIB v1 and v2 Support

- **Web-based Management**

- Smart Easy Setup
- Standard Voice Interface
- Standard PSTN Back-up Interface

- **Watch-dog Function**

- Hardware, Software watch-dog services

- **Remote Management**

- Telnet
- Rlogin

- **Auto Upgrade Service**

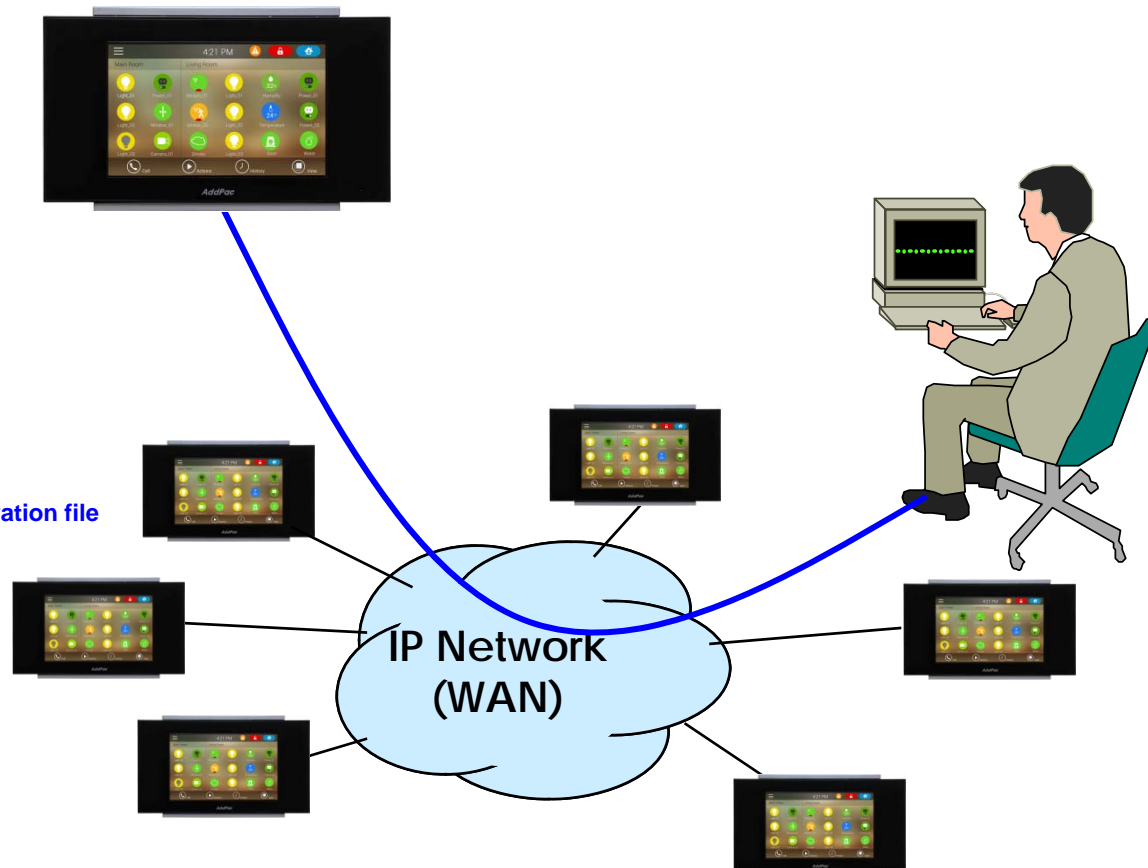
- HTTP server based APOS image and configuration file auto-upgrade support

- **Batch Job Function**

- Text based script downloading

- **Interoperable with AP-VPMS Service**

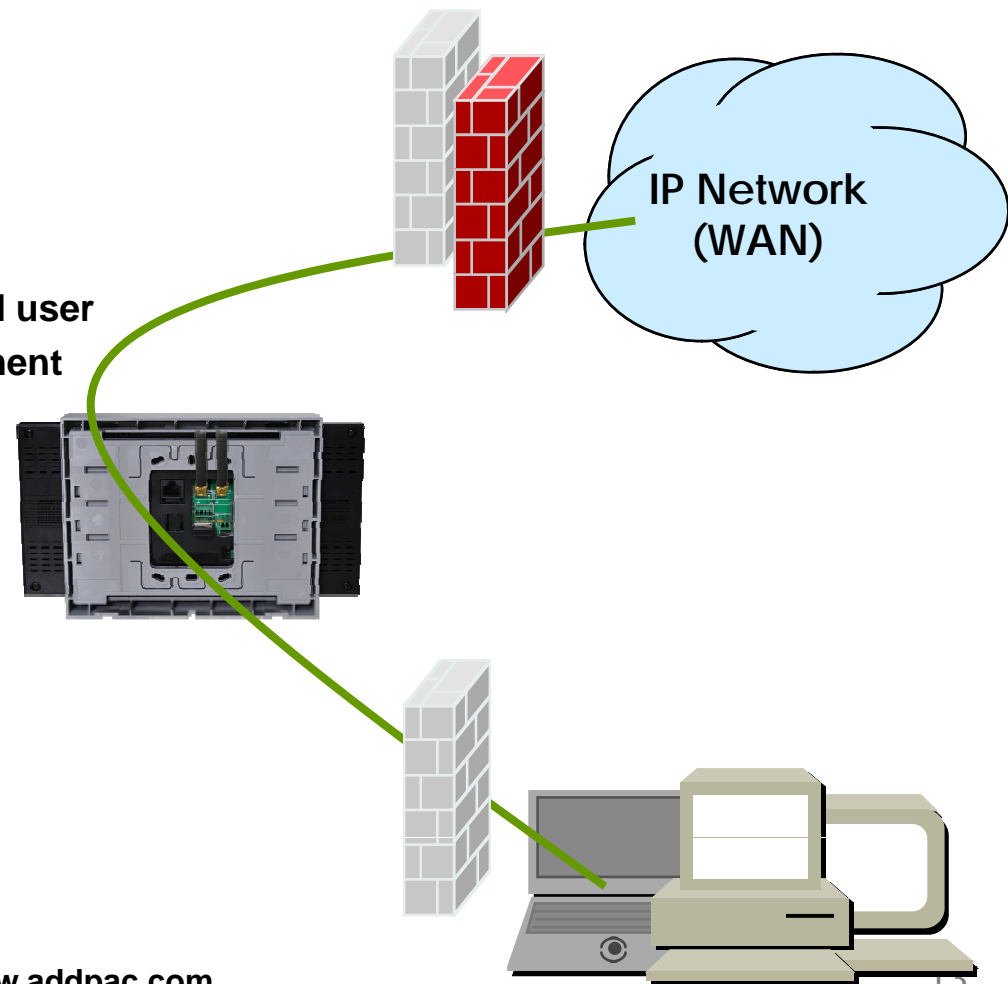
- AddPac VoIP Plug & Play Management System (AP-VPMS)



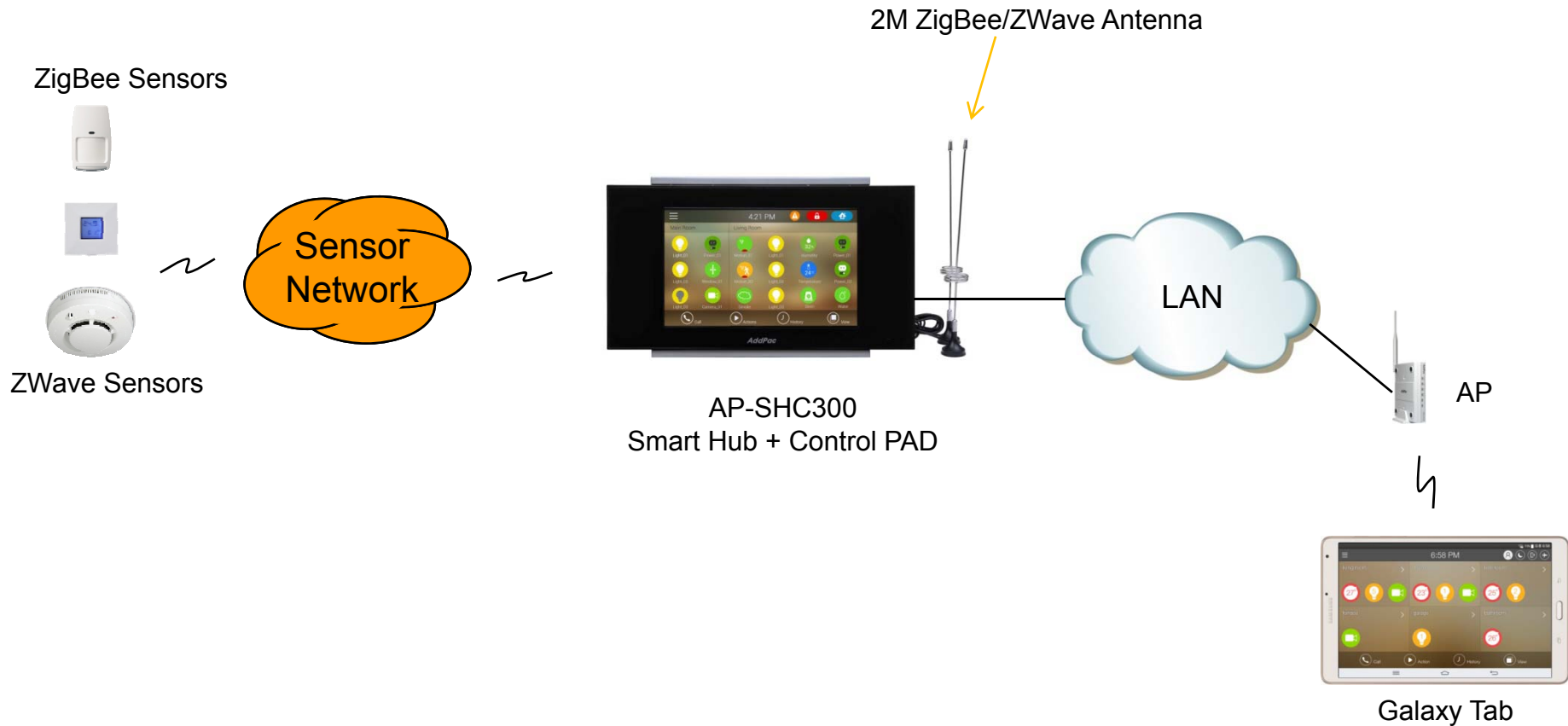
Security Management

AP-SHC300 Smart Hub Control PAD for Z Sensors

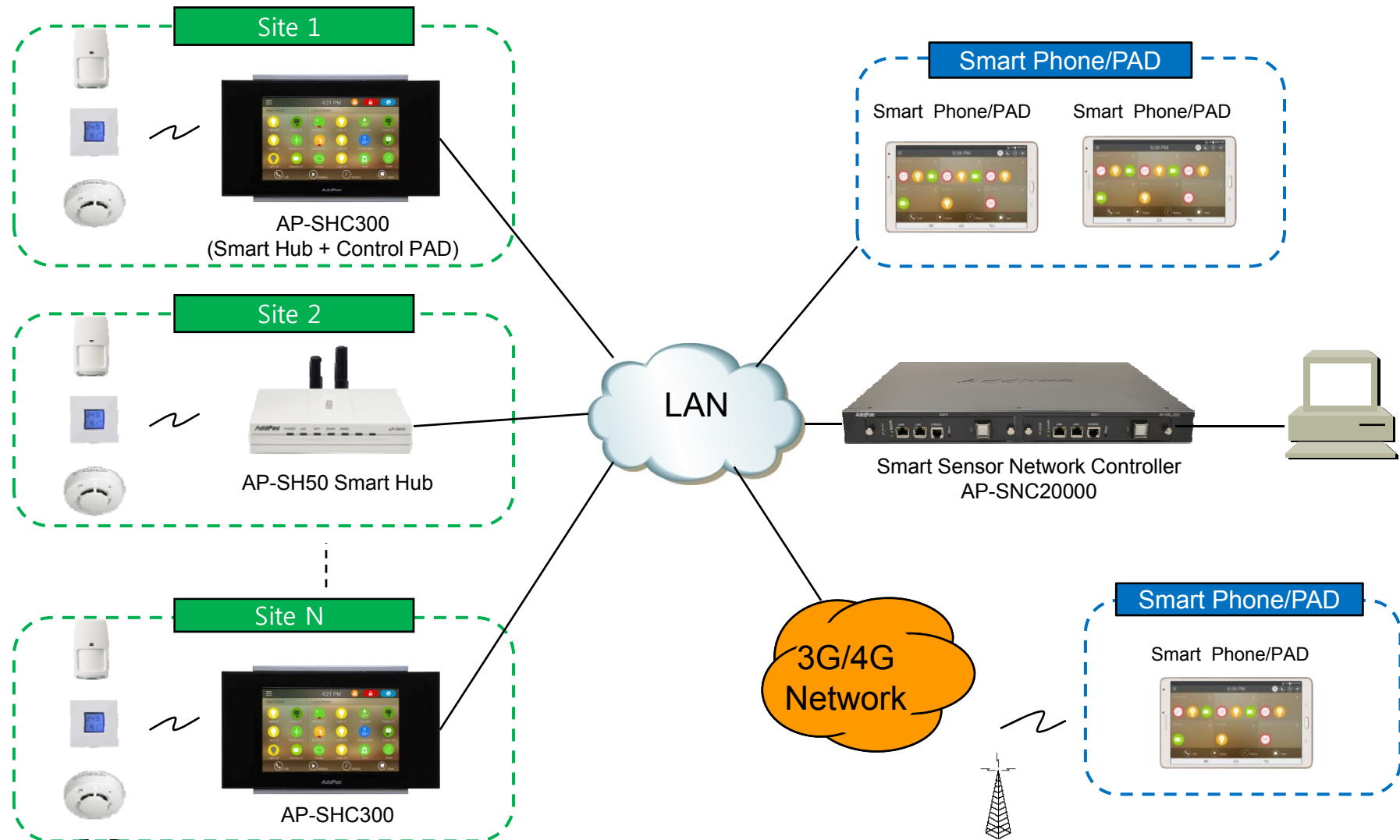
- IP packet filtering
- IP access list
- User authentication function
 - Password Authentication Protocol (PAP)
 - Challenge Handshake Authentication Protocol (CHAP)
- Enable/Disable specific protocols
- Auto-square connect of Telnet session
- Account Management function for multi-level user
- SNMP/TELNET/FTP/HTTP/TFTP port assignment function
- SNMP/TELNET/FTP access list management
- Boot mode security checking function



AP-SHC300 Smart Hub Control PAD for Z Sensors : Standard Application



AP-SHC300 Smart Hub Control PAD for Z Sensors : Large Scale Application



Ordering Information

- **AP-SHC300 Smart Hub Control PAD Hardware**
 - AP-SHC300 Smart Hub Control PAD Main Body
 - RISC Microprocessor with High-end Programmable DSP Architecture
 - 7 Inch LCD with Touch Screen Features
 - Internal MIC, Internal Speaker
 - 1-Port Zigbee Interface with external antenna
 - 1-Port Zwave Interface with external antenna
 - 1-Port 10/100Mbps Fast Ethernet
 - 1-Port USB 2.0 Interface for Wifi USB Module
 - PoE Interface (Option)
 - Including Network Cable Set & External Power Supply, etc.
- **Built-in APOS Internetworking Software for AP-SHC300**
- **Including 1 Year Hardware Warranty**
- **Product Documents**
 - Install and Operation Guide (PDF)
- **Pricing**
 - AddPac Technology Regional Sales Manager
 - Authorized Sales and Marketing Representatives



Thank you!

AddPac Technology Co., Ltd.
Sales and Marketing

Phone +82.2.568.3848 (KOREA)

FAX +82.2.568.3847 (KOREA)

E-mail sales@addpac.com