

AP-VAC300

IP Video Door Phone

High Performance IP Video Door Phone Solution

Motion Sensor Interworking Service for Video Door Monitoring



Motion Sensor

AddPac

AddPac Technology

2015, Sales and Marketing

www.addpac.com

Contents

- Video Monitoring Service Overview using Motion Sensor
- Smart Video Controller Overview
- Video Monitoring Service Diagram
- Video Monitoring Service Scenario
- Video Monitoring Service RTSP Call Flow
- Smart Video Controller Configuration
 - Configuration
 - Program Setup

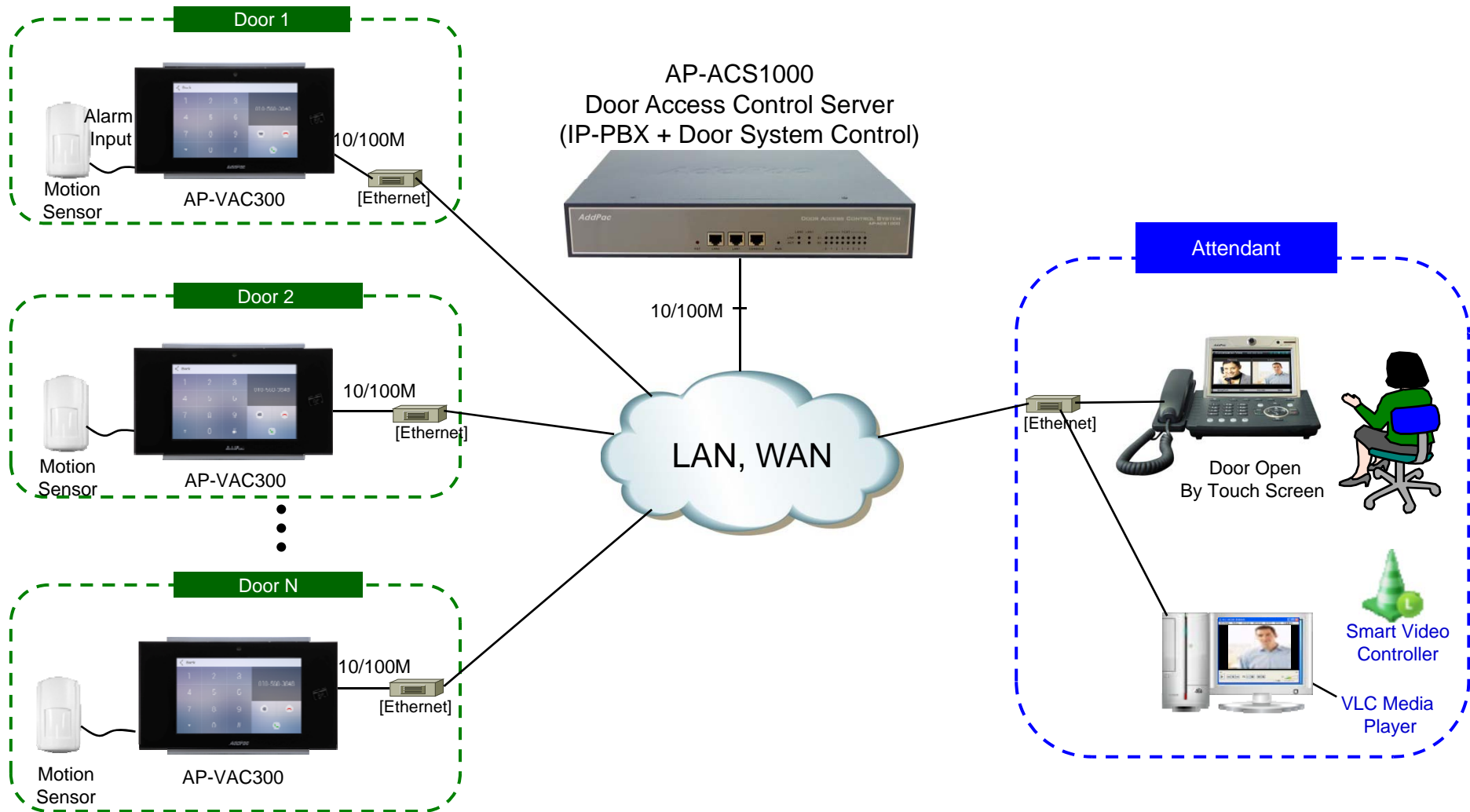
Overview

- Motion Sensor Interworking Service for Video Monitoring Service
- Video Door Phone Side : External Motion Sensor
- PC Side : Smart Video Controller Software and MS-window based Video Decoder Program such as VLC, etc
- RTSP(Real Time Streaming Protocol) Protocol Support
- Multiple Video Decoder & Displayer Controlling
- Application Aware Motion Detection Algorithm

Smart Video Controller Overview

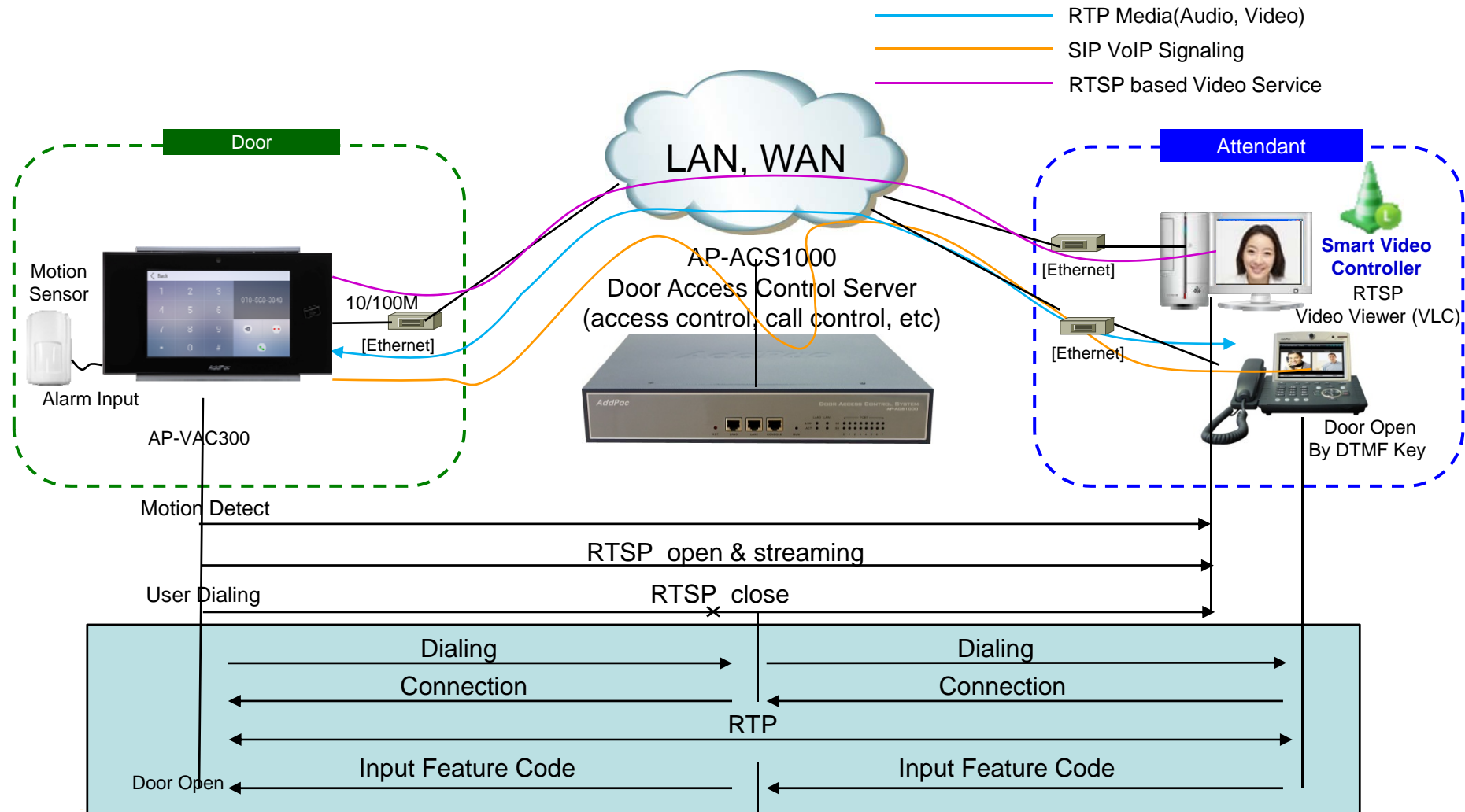
- Smart Video Controller Features
 - MS Window based Program : XP, Vista, Window7 support
 - Video: MS Window Program, PC based Video Decoder & Displayer
 - RTSP(Real Time Streaming Protocol) Protocol Support
 - Multiple Video Displayer Controlling
 - Video Monitoring Service using external motion sensor
 - I. AP-VAC300 Video Monitoring with VLC Player

Video Monitoring Service Diagram

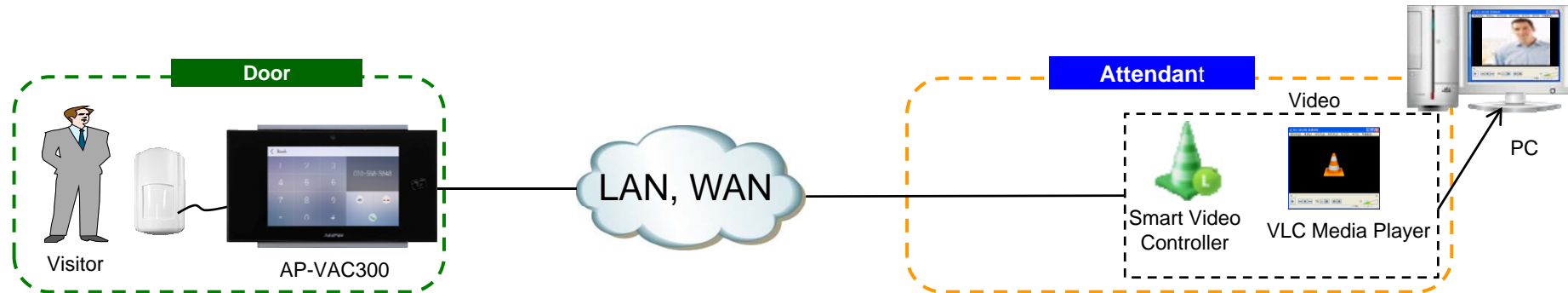


Video Monitoring Service Scenario

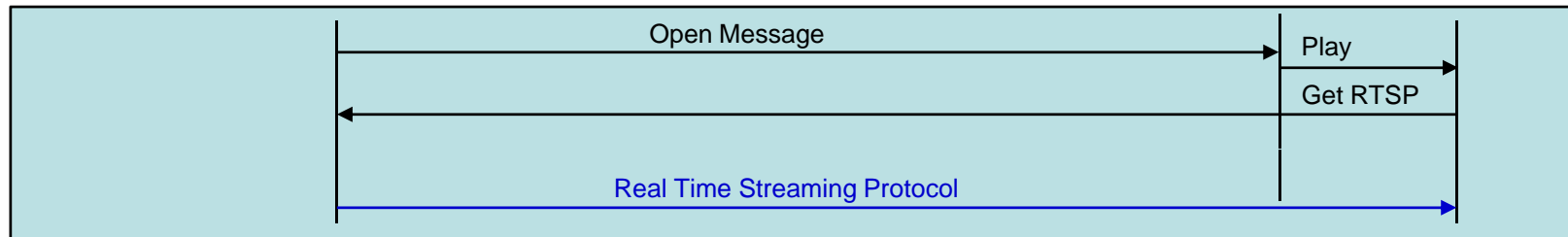
: AP-VAC50 Video Monitoring with VLC



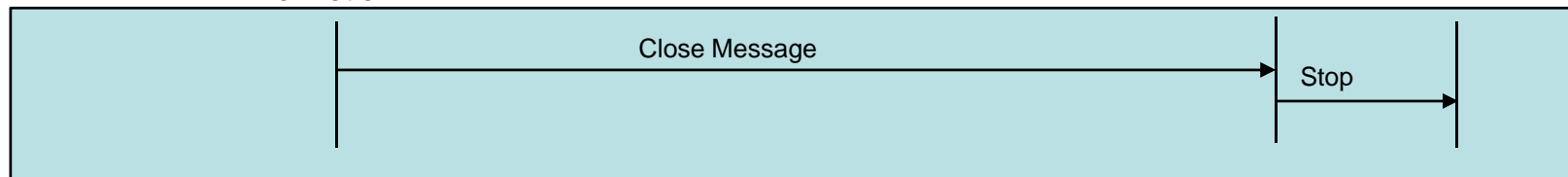
Video Monitoring Service RTSP Call Flow



Motion Detect



No Motion



Smart Video Controller Configuration

Called-Number

IP Address

Port

Smart Web Manager
www.addpac.com

SVC Configuration

No.	Called-Number	IP Address	Port
1	1000	172.17.117.20	19999
2	2000	172.17.117.28	19999
3			
4			
5			
6			
7			
8			
9			
10			
11			

Information

AddPac Technology
Model : VAC50_G2
DACS : 172.17.216.250 (4080)
DACS Registration : Success
SIP : 172.17.250.250(5060)
SIP Registration : Success

Description

Setup VLC IP Address and Port.

[Figure 1]
AP-VAC50 Smart Web

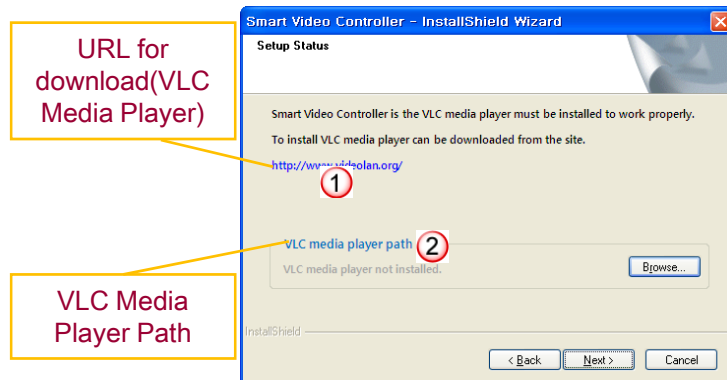
- 1 Internal extension (line) number
- 2 Personal Computer's IP Address
- 3 Port Number (Default .19999)

Smart Video Controller Configuration (Cont.)

Smart Video Controller Program Setup

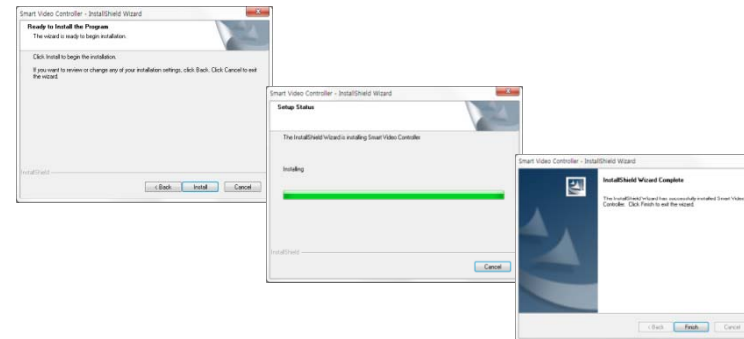
VLC Media Player Program must be pre-installed before Smart Video Controller program setup procedure.

(VLC Player is MS window software that support RTSP based Video Decoder & Display service

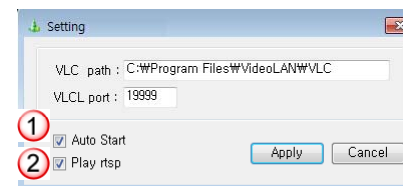


[Figure 1]
VLC Media Player Install Shield

- ① VLC Program Download URL Address
- ② VLC Program Execution File Path



[Figure 2]
Smart Video Controller Install Progress



[Figure 3]
Smart Video Controller Setting

- ① Program Auto Start at PC booting time
- ② Program enable/disable



Thank you!

AddPac Technology Co., Ltd.
Sales and Marketing

Phone +82.2.568.3848 (KOREA)

FAX +82.2.568.3847 (KOREA)

E-mail sales@addpac.com