

AddPac IP Video Door Phone



Multi-Terminal Ringing Service
using ACS(Access Control
Server) for Large-Scale
Deployment



AddPac

AddPac Technology

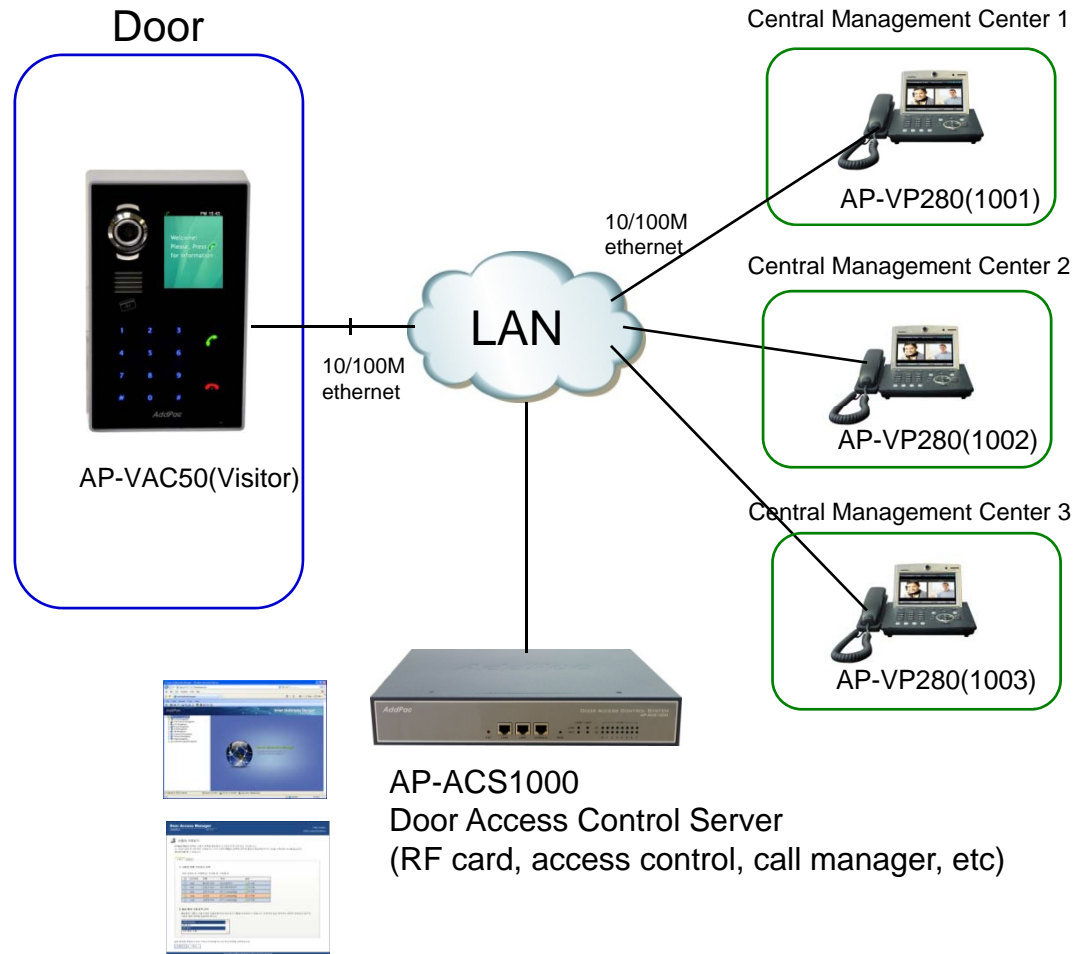
2014, Sales and Marketing

Contents

- Multi-Terminal Ringing Service Network Diagram
- Signaling Flow
- Large-Scale Multi-Terminal Ringing Service Network Diagram



Multi-Terminal Ringing Network Service Diagram (single ACS)



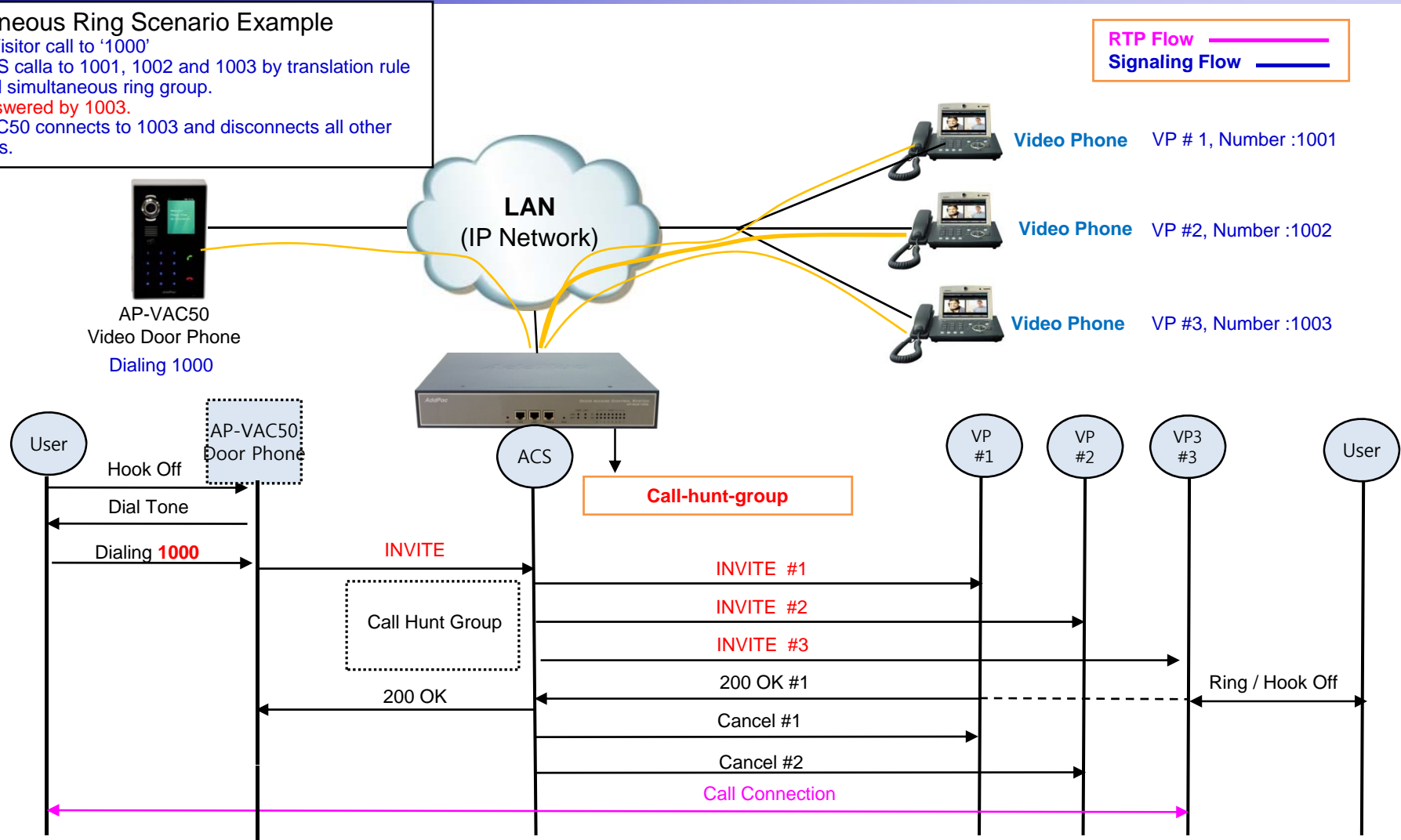
Benefits are

- When main secretary is busy or in absence, the others can response to the visitor's call.
- This service extends to WAN, Mobile or PSTN via VoIP Service Provider.

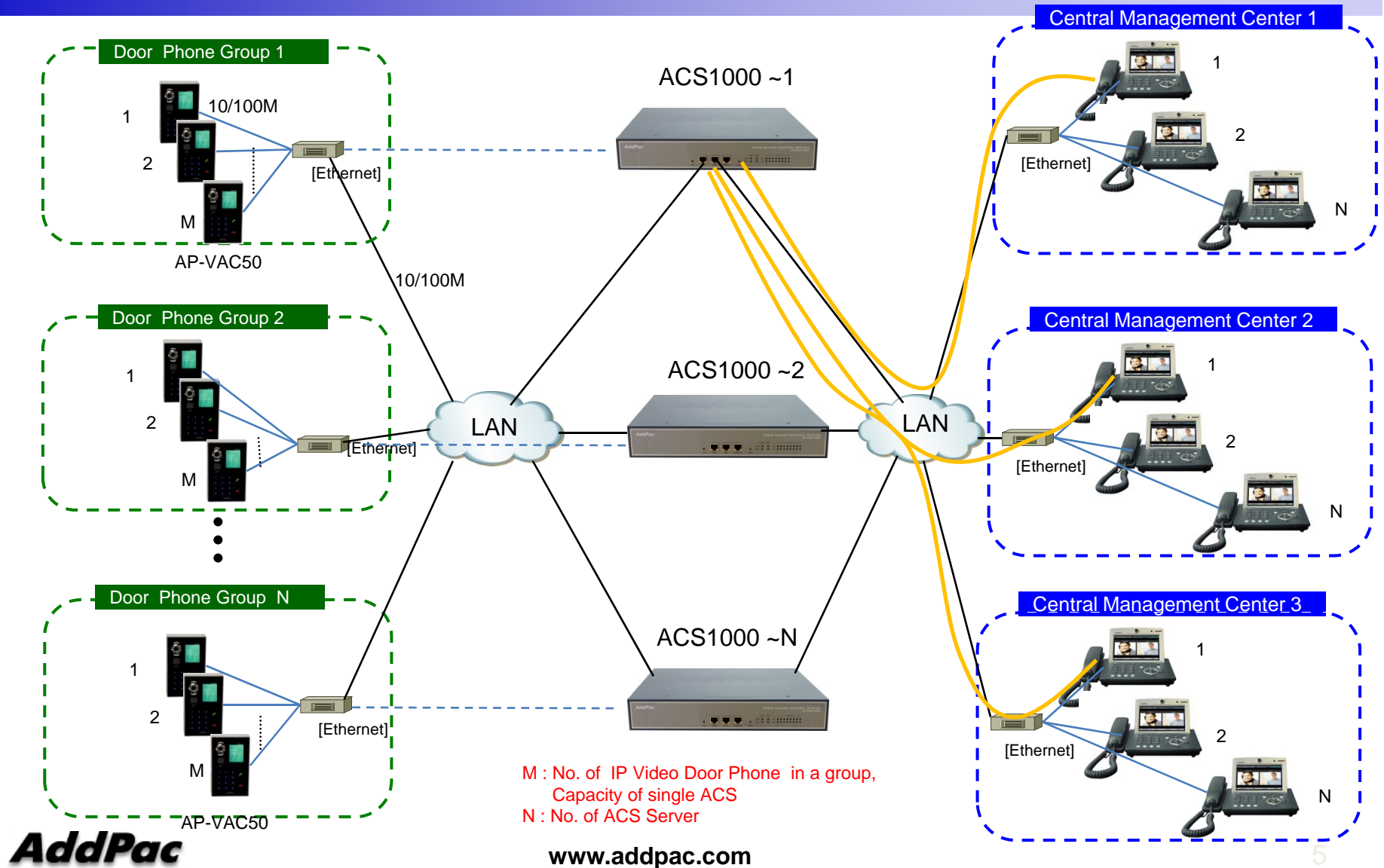
Signaling Flow (Video Door Phone to ACS to Video Phones)

- Simultaneous Ring Scenario Example**
1. A Visitor call to '1000'
 2. ACS calla to 1001, 1002 and 1003 by translation rule and simultaneous ring group.
 3. Answered by 1003.
 4. VAC50 connects to 1003 and disconnects all other calls.

RTP Flow ———
Signaling Flow ———



Large Scale Network Diagram (Multiple ACS Environment)





Thank you!

AddPac Technology Co., Ltd.
Sales and Marketing

Phone +82.2.568.3848 (KOREA)

FAX +82.2.568.3847 (KOREA)

E-mail sales@addpac.com