

# AP-VAC150

## IP Video Door Phone

Fingerprint Recognition IP Video Door Phone Solution

Video Door Phone Standalone  
Mode Service Feature



***AddPac***

**AddPac Technology**

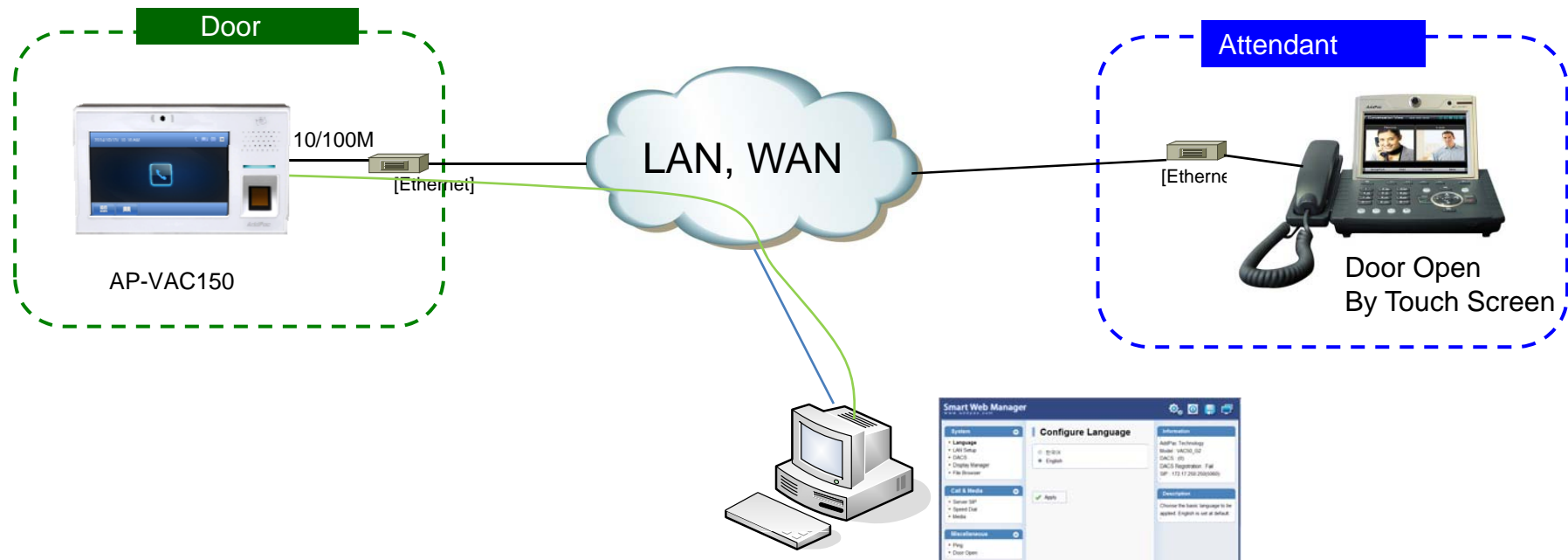
2015, Sales and Marketing

# Contents

- Standalone Mode Network Diagram
- Standalone Mode Signal Flow
- ACS(Access Control Server) Mode Network Diagram
- Standalone Mode vs ACS Mode Comparison Table
- Smart Web Manager for Standalone Mode
  - Overview
  - Standalone Mode Diagram
  - Standalone Mode Flow
  - Service control
  - Indoor open control
  - User list
  - RF card list
  - RF card registration
  - Event log

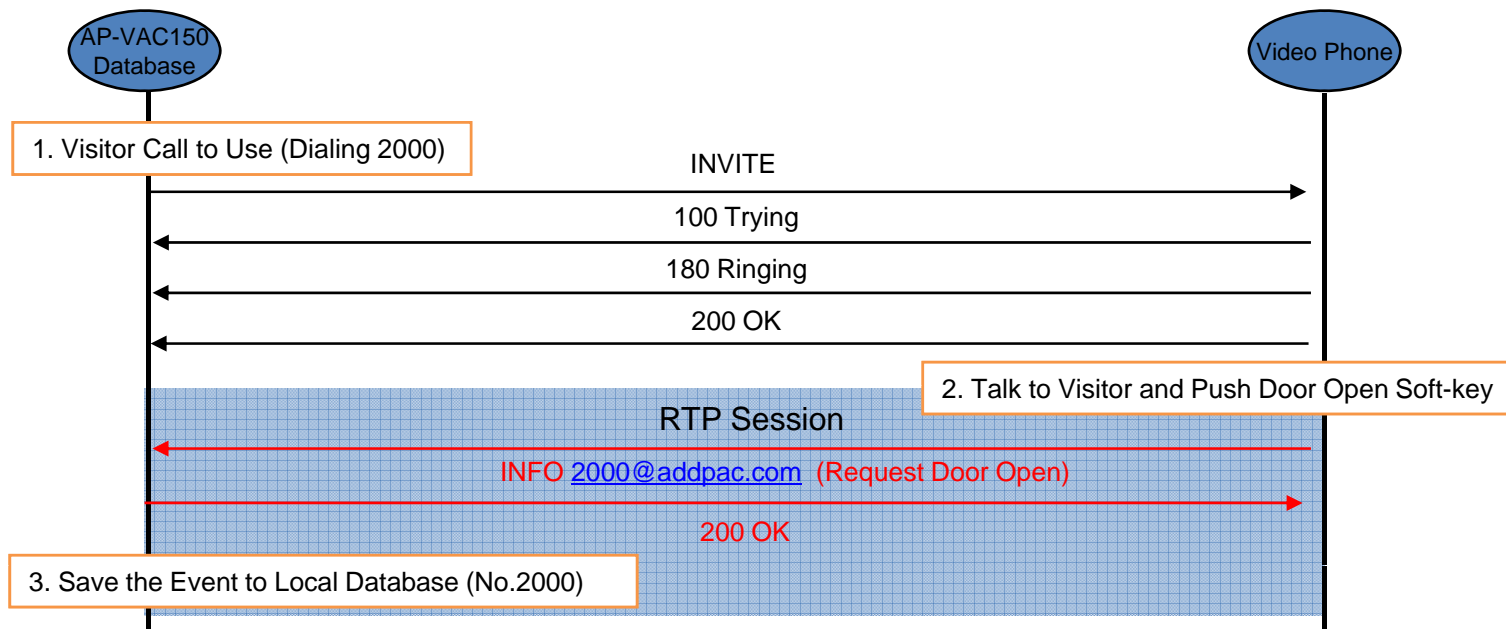
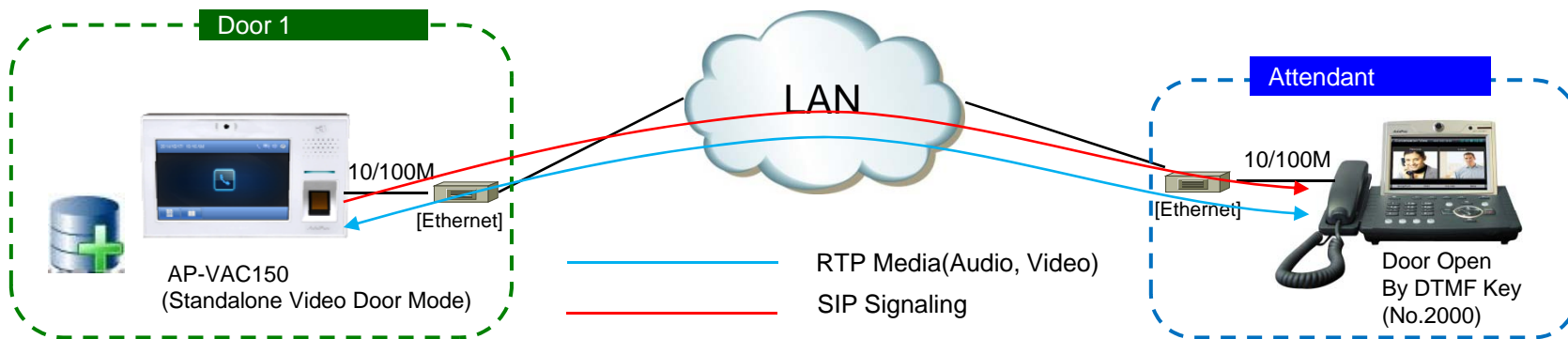


# Standalone Mode Network Diagram

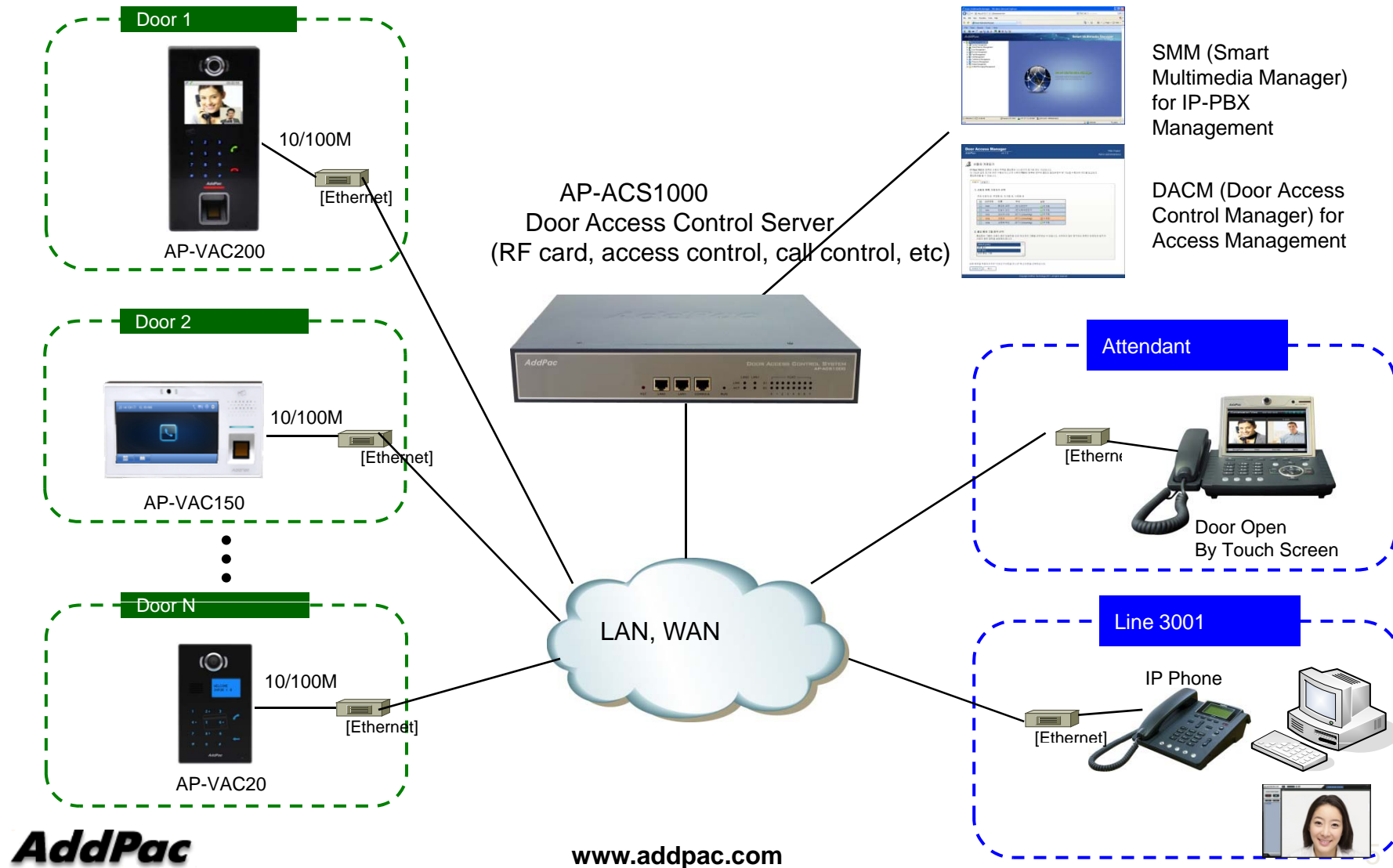


Smart Web Manager for AP-VAC200

# Standalone Mode Signal Flow



# ACS Mode Network Diagram



# Standalone Mode vs ACS Mode

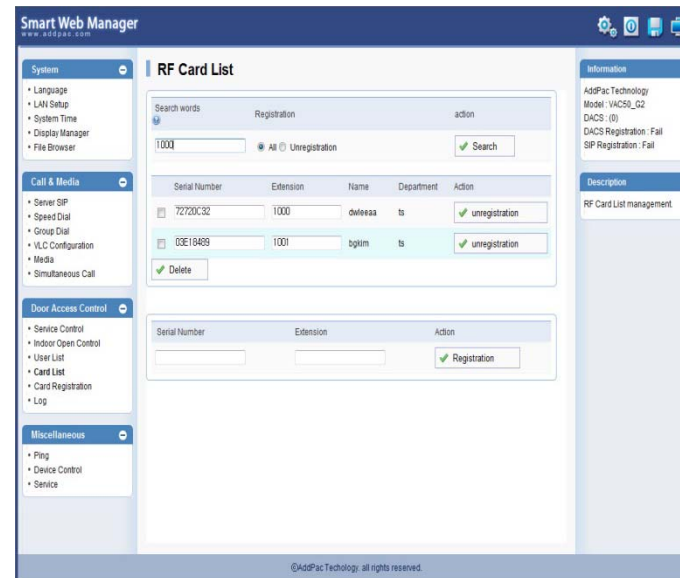
Category	Detail Category	Client-Server ( ACS1000, VAC20/VAC50, Indoor Phone)	Standalone(VAC20/VAC 50 – Indoor Phone)
Door Access Control	Provisioning	Support multiple binding an user to door phones by ACS WEB. (user : terminal = M:N)	Support single binding an user to door phone by WEB. ( user : terminal = N : 1 )
	Integrated with IP-PBX(IPNext system)	Support automatic importing data of user and terminal at PBX to ACS. Indoor Phones are integrated to IP-PBX.	N/A
	Scheduling based Access Control	Support powerful schedule-based door access policy for a user using various date and time conditions	N/A
	RF-Card Control	Display all registered card list . Register a new card to the user by WEB.	Cards are registered to single door phone.
	Event Logging	Support powerful search options(start date, end date and level, etc) for access events to the all registered door phones.	Support powerful search options for access events to the single door phones.
Time and Attendance	Attendance code management	Support Time and Attendance codes (business trip or vacation, etc) creation and management.	N/A
	Attendance Reporting	Support e-mail delivery for manager to receive daily & monthly attendance report.	
	Attendance Statistics	Provide various time and attendance report view by date, month and personal	



# Smart Web Manager for Standalone Mode

# Contents

- Overview
- Standalone Mode Diagram
- Standalone Mode Flow
- Service control
- Indoor open control
- User list
- RF card list
- RF card registration
- Event log





# Overview

## What`s New in AP-VAC Door Phone

(Smart Web Manager)

- Provides Standalone Video Door Mode Service
- Simple Menu and Easy Configuration
- Smart Web Manager to configure User and RF Card Registration
- Provides Event Log which occurs from the door control system

# Service control

**Smart Web Manager**  
www.addpac.com

**System**

- Language
- LAN Setup
- System Time
- Display Manager
- File Browser

**Call & Media**

- Server SIP
- Speed Dial
- Group Dial
- VLC Configuration
- Media
- Simultaneous Call

**Door Access Control**

- Service Control
- Indoor Open Corridor
- User List
- Card List
- Card Registration
- Log

**Miscellaneous**

- Ping
- Device Control
- Service

**Service Control**

**Door Access Control Service**

type  Server-Client  Stand-Alone

Apply

**Event Log**

Log  Local  Disable

Storage Period  day(default 30, 3~90)

Max Size Configuration  (default 10000, 1000~30000)

Current Size

Event Clear

Clear

**Information**

AddPac Technology  
Model : VAC50\_G2  
DACS : (0)  
DACS Registration : Fail  
SIP Registration : Fail

**Description**

Setup access control server.

**Service Control**  
Support both server-client mode and standalone mode in accordance with Door Access Control Service Type

**Event Log Configuration**

- Local / Disable
- Storage Period
- Max Size Configuration
- Event Clear

©AddPac Technology. all rights reserved.

# Indoor open control

**Smart Web Manager**  
www.addpac.com

**System**

- Language
- LAN Setup
- System Time
- Display Manager
- File Browser

**Call & Media**

- Server SIP
- Speed Dial
- Group Dial
- VLC Configuration
- Media
- Simultaneous Call

**Door Access Control**

- Service Control
- Indoor Open Control**
- User List
- Card List
- Card Registration
- Log

**Miscellaneous**

- Ping
- Device Control
- Service

**Door Open**

Feature Code: 88 using 0-9, #, \*

Door Close Time: 2 default 2 sec, 1~180 sec

Apply

Door Open

Execute

**Information**

AddPac Technology  
Model : VAC50\_G2  
DACS : (0)  
DACS Registration : Fail  
SIP Registration : Fail

**Description**

Open/Close the door remotely.

**Door Open**

- \* Feature code
  - DTMF tone configuration for door open at remote user side such as IP Phone, Video Phone, Analog Phone. etc
- \* Door close time
  - Time to lock from the moment door is opened . Default time 2 sec
- \* Door open
  - Door open operation test. Audio tone is executed at normal operation

©AddPac Technology, all rights reserved.

# User list

**Smart Web Manager**  
www.addpac.com

**System**

- Language
- LAN Setup
- System Time
- Display Manager
- File Browser

**Call & Media**

- Server SIP
- Speed Dial
- Group Dial
- VLC Configuration
- Media
- Simultaneous Call

**Door Access Control**

- Service Control
- Indoor Open Control
- User List**
- Card List
- Card Registration
- Log

**Miscellaneous**

- Ping
- Device Control
- Service

**User List**

Search words:  Card:  All  Registration  Unregistration

Extension	Name	Department	Card	Action
<input type="checkbox"/>	1001	bgkim	ts	Y <input type="button" value="Edit"/>
<input type="checkbox"/>	1000	dwleaaa	ts	Y <input type="button" value="Edit"/>

Extension	Name	Department	Password	Action
<input type="text" value="1000"/>	<input type="text" value="dwleaaa"/>	<input type="text" value="ts"/>	<input type="password" value="•••••"/>	<input type="button" value="Edit"/>

**Information**

AddPac Technology  
Model : VAC50\_G2  
DACS : (0)  
DACS Registration : Fail  
SIP Registration : Fail

**Description**

Register, add and delete the list of available user access register.

**User List**  
It displays imported user information from AP-VAC50 Standalone Door Access Control System.  
User may search as User Extension Number, RF Card.  
User register, change, delete is possible

©AddPac Technology. all rights reserved.

# RF card list

**Smart Web Manager**  
www.addpac.com

**System**

- Language
- LAN Setup
- System Time
- Display Manager
- File Browser

**Call & Media**

- Server SIP
- Speed Dial
- Group Dial
- VLC Configuration
- Media
- Simultaneous Call

**Door Access Control**

- Service Control
- Indoor Open Control
- User List
- Card List**
- Card Registration
- Log

**Miscellaneous**

- Ping
- Device Control
- Service

**RF Card List**

Search words: 1000  
Registration:  All  Unregistration  
Action:

Serial Number	Extension	Name	Department	Action
72720C32	1000	dwleaa	ts	<input checked="" type="checkbox"/> unregistration
03E18489	1001	bgkim	ts	<input checked="" type="checkbox"/> unregistration

Serial Number: \_\_\_\_\_ Extension: \_\_\_\_\_ Action:

**Information**

AddPac Technology  
Model : VAC50\_G2  
DACS : (0)  
DACS Registration : Fail  
SIP Registration : Fail

**Description**

RF Card List management.

**RF Card List**  
You may search RF card issue status (All card / Serial Number / Extension Number)  
RF Card change and delete is possible

©AddPac Technology. all rights reserved.

# RF card registration

The screenshot displays the Smart Web Manager interface with the following components:

- System:** Language, LAN Setup, System Time, Display Manager, File Browser.
- Call & Media:** Server SIP, Speed Dial, Group Dial, VLC Configuration, Media, Simultaneous Call.
- Door Access Control:** Service Control, Indoor Open Control, User List, Card List, **Card Registration**, Log.
- Miscellaneous:** Ping, Device Control, Service.

The **RF Card Registration** section is highlighted with a red dashed border and contains:

- Buttons:  RF Card Recognition,  Refresh

Time	Serial Number	Status	Name	Extension
8/16/2012 11:46:12	72720C32	new		

Below this is a **Registration** button with a green checkmark.

The **Information** panel on the right shows:

- AddPac Technology
- Model : VAC50\_G2
- DACS : (0)
- DACS Registration : Fail
- SIP Registration : Fail

The **Description** panel shows: RF Card Registration.

The **RF Card Registration Process** is outlined in a blue dashed box:

- Click RF Card Registration  RF Card Recognition
- Ready status in VAC50 Terminal with beep sound
- Card information is displayed when RF card is recognized

Time	Serial Number	Status
8/16/2012 14:59:3	72720C32	new

- Click registration button  Registration
- Save Door Access System Database

©AddPac Technology. all rights reserved.

# Event log

**Smart Web Manager**  
www.addpac.com

**System**

- Language
- LAN Setup
- System Time
- Display Manager
- File Browser

**Call & Media**

- Server SIP
- Speed Dial
- Group Dial
- VLC Configuration
- Media
- Simultaneous Call

**Door Access Control**

- Service Control
- Indoor Open Control
- User List
- Card List
- Card Registration
- Log**

**Miscellaneous**

- Ping
- Device Control
- Service

**Log**

Access Log    Event Day    Extension    action

   2012/ 8/16       

Time	Extension	Name	Log
8/16/2012 11:40:14	1000	dwleaaa	Access Allow
8/16/2012 11:40:12	1001	bgkim	Access Allow
8/16/2012 11:40: 8	1001	bgkim	Access Allow
8/16/2012 11:40: 2	1000	dwleaaa	Access Allow
8/16/2012 10:53:46			Access Deny by Unknown Card

**Information**

AddPac Technology  
Model : VAC50\_G2  
DACS : (0)  
DACS Registration : Fail  
SIP Registration : Fail

**Description**

check the access log.

**Event Log**  
Search user information, access terminal status, and events which occurs from the access control system

- Date
- User Extension Number
- Event Level

\* Critical / Error / Warning / Notice / Information / Debug



# Thank you!

**AddPac Technology Co., Ltd.**  
Sales and Marketing

Phone +82.2.568.3848 (KOREA)

FAX +82.2.568.3847 (KOREA)

E-mail [sales@addpac.com](mailto:sales@addpac.com)