

Touch Screen IP Video Door Phone Solution



AddPac

AddPac Technology

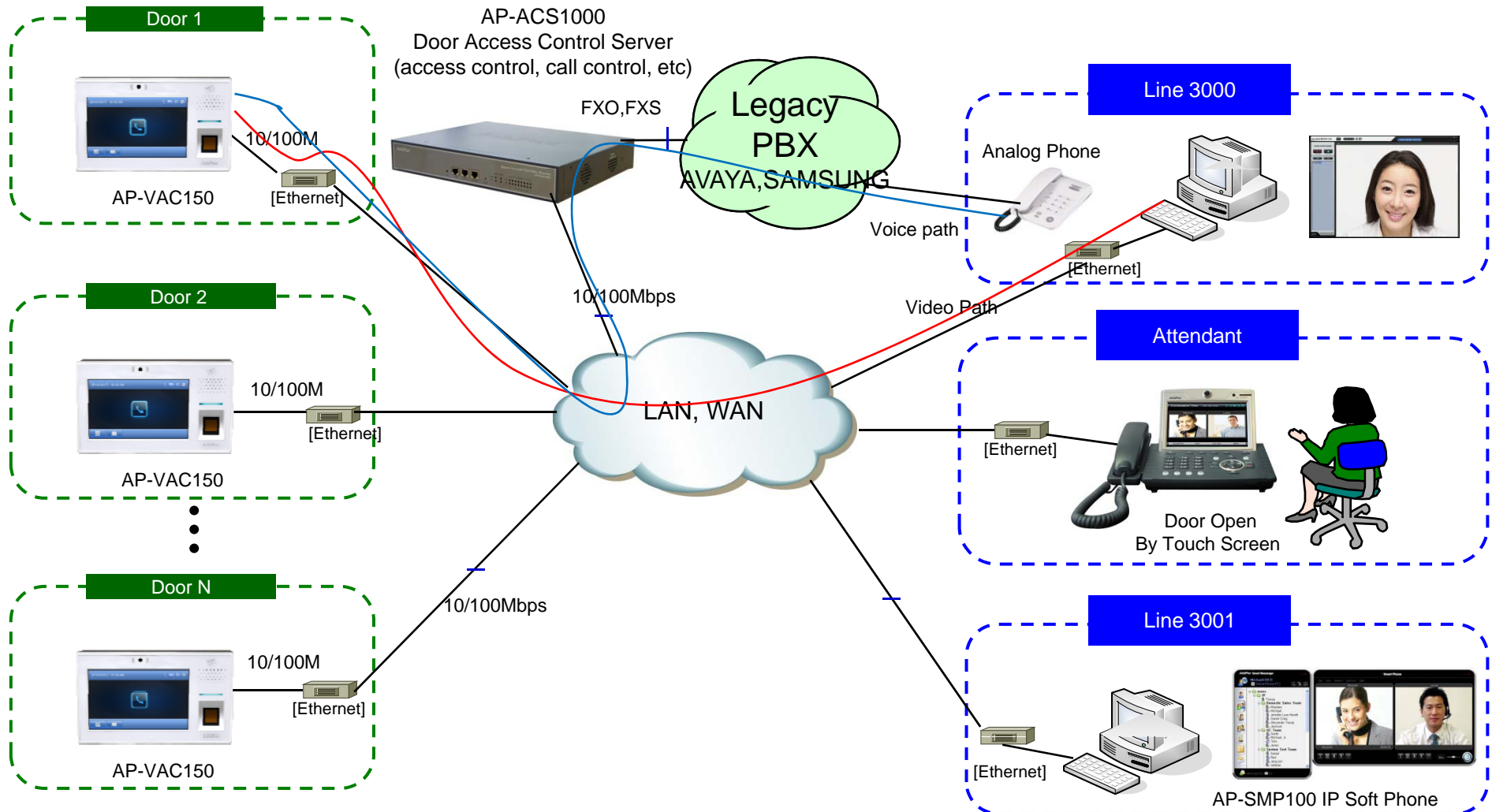
2014, Sales and Marketing

www.addpac.com

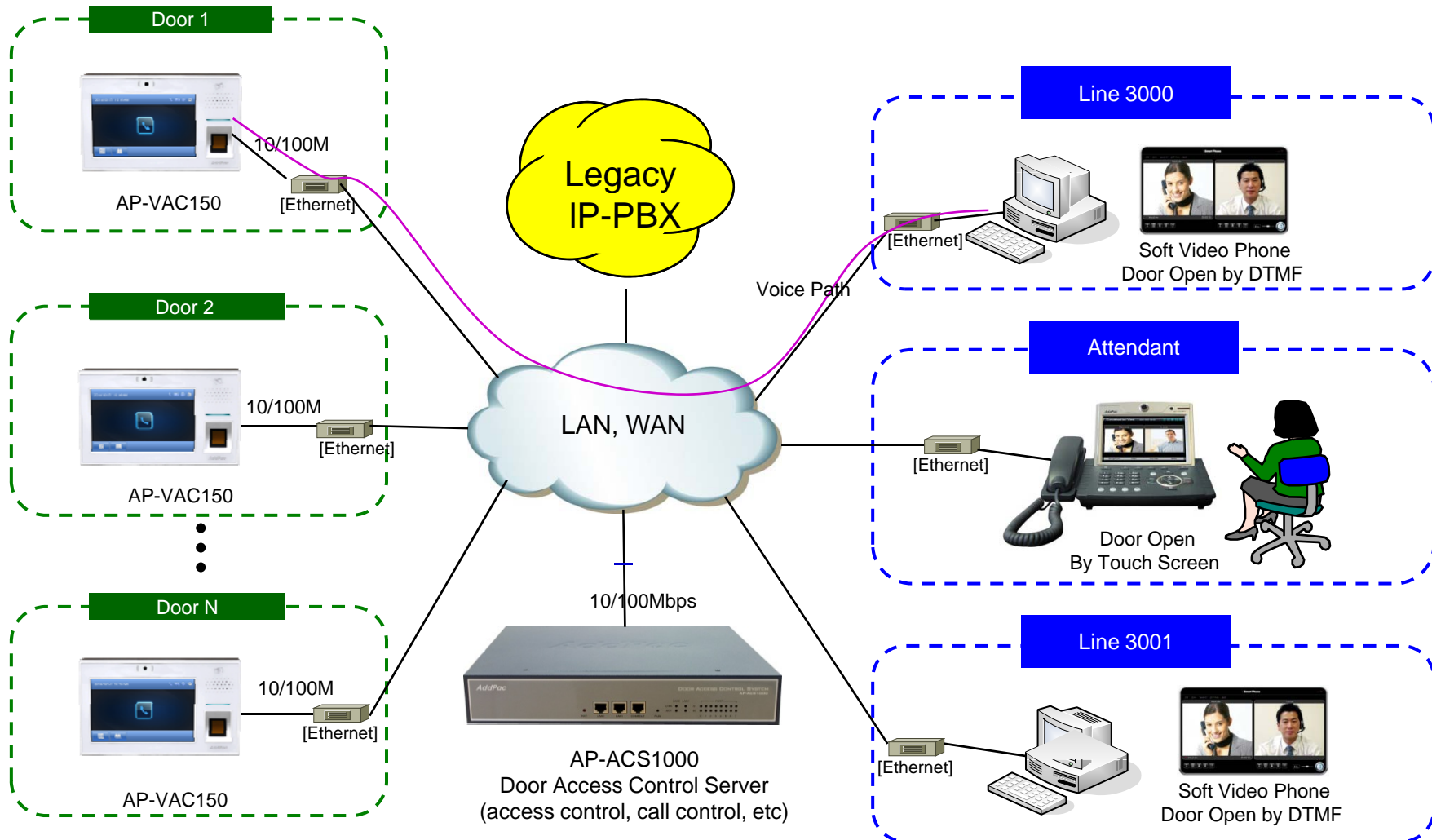
Contents

- Touch Screen IP Video Door Phone Service Diagram
- Touch Screen IP Video Door Phone Comparison Table
- Touch Screen IP Video Door Phone
 - AP-VAC150
 - AP-VAC80
- Backend Solution
 - AP-VP280, AP-VP120 Video Phone
 - AP-ACS1000 Door Access Control Server & Web based Video Access Control Client(User registration, etc)
 - AP-SMP100 IP Soft Video Phone for Desktop, Notebook

Legacy PBX Environment



Legacy IP-PBX Environment





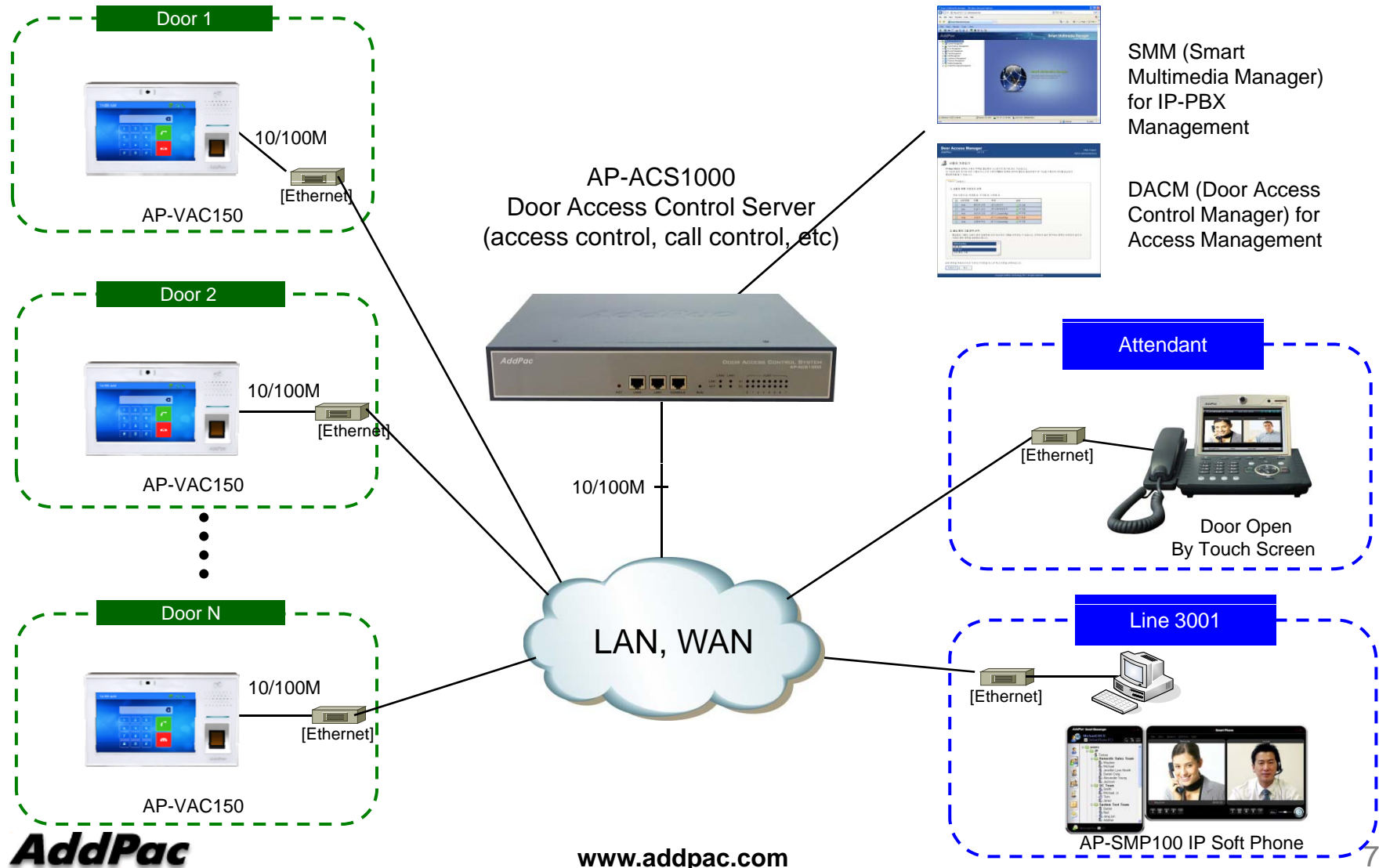
AP-ACS1000 Door Access Control Server

Contents

- DACS(Door Access Control Server) Network Diagram
- AP-ACS1000 DACS Main Features
- AP-ACS1000 DACS Hardware Specification
- DACS System Message Flow (Examples)
- DACM (Door Access Control Manager)
- Open API for Third Party Controller

Integrated Door Access Control and Call Control

AP-ACS1000 DACS (Door Access Control Server)



AddPac

www.addpac.com

Main Features

AP-ACS1000 DACS (Door Access Control Server)

- Door Access Control Application System
- SIP Application Server, Proxy, Registrar and Location Server
- Multiple ITSP Trunk with SIP & H.323 Accounts Support
- Legacy PBX Interworking Service
- High Performance RISC & Programmable DSP Architecture
- Two(2) 10/100Mbps Fast Ethernet (IP Share ,etc)
- High Performance LAN-to-LAN Routing Capability
- Powerful Network Protocols (PPPoE, DHCP, Static Routing, etc)
- IPv4/IPv6 Dual Stack
- Firmware Upgradeable Architecture
- Smart Multimedia Manager for IP-PBX Management
- DACM(Door Access Control Manager)
- Advanced Voice QoS Mechanism
- Small, Light and Compact Design
- Two(2) VoIP Module Slots for Analog, Digital Interface

Hardware Specification

AP-ACS1000 DACS (Door Access Control Server)

- RISC Microprocessor Computing Power
- Main Chassis
 - Network Interface
 - Two(2) 10/100Mbps Fast Ethernet
 - One(1) RS-232C Console (RJ45)
 - Two(2) VoIP Module Slots for FXS, FXO etc



Hardware Specification

AP-ACS1000 DACS (Door Access Control Server)

AP-ACS1000 Front Side



LAN1 (10/100Mbps)

LAN0(10/100Mbps)

Console Port

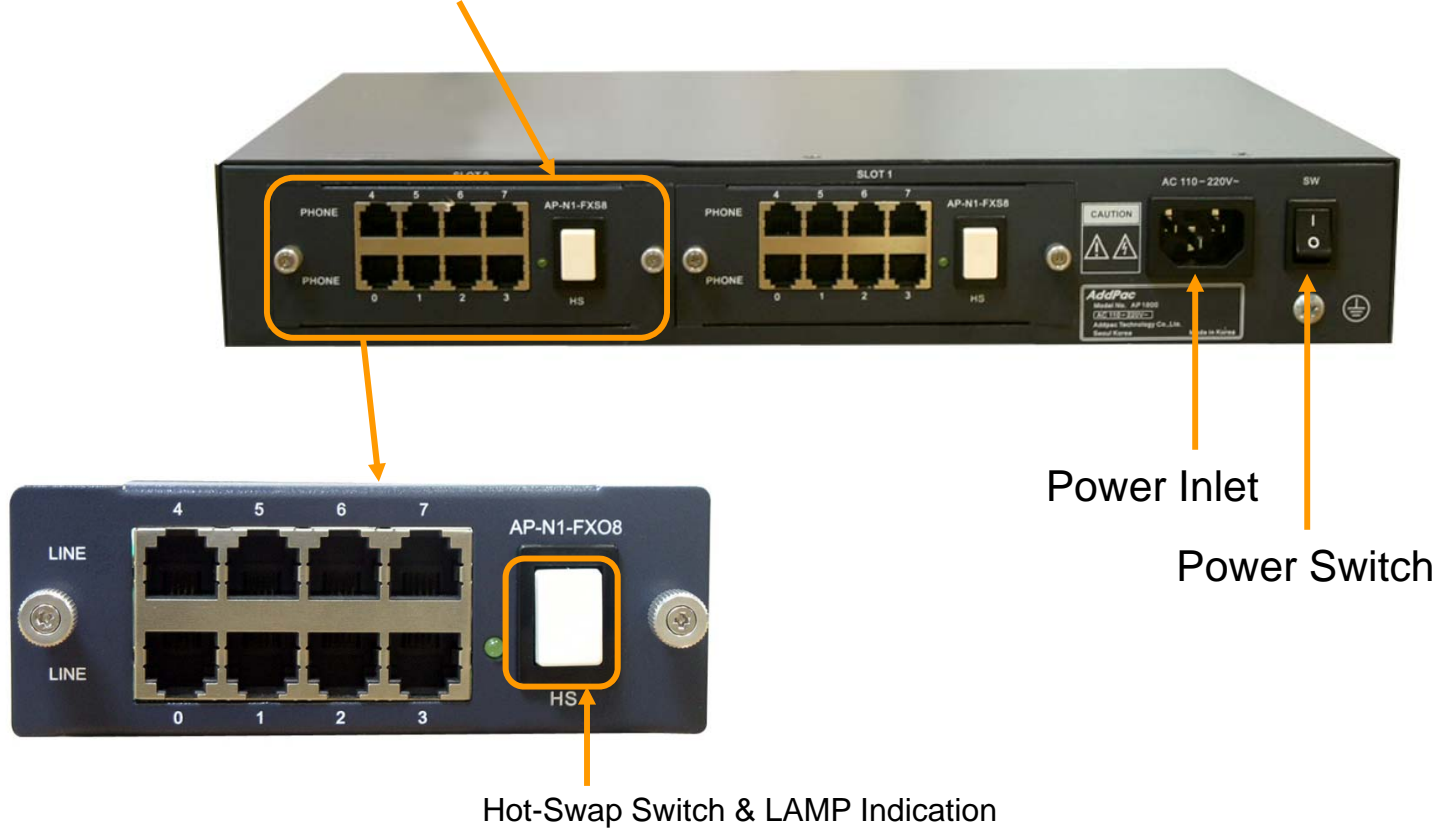
www.addpac.com

Hardware Specification

AP-ACS1000 DACS (Door Access Control Server)

AP-ACS1000 Back Side



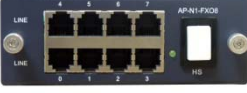

PSTN Interface Module



Hardware Specification

AP-ACS1000 DACS (Door Access Control Server)

PSTN Interface Module

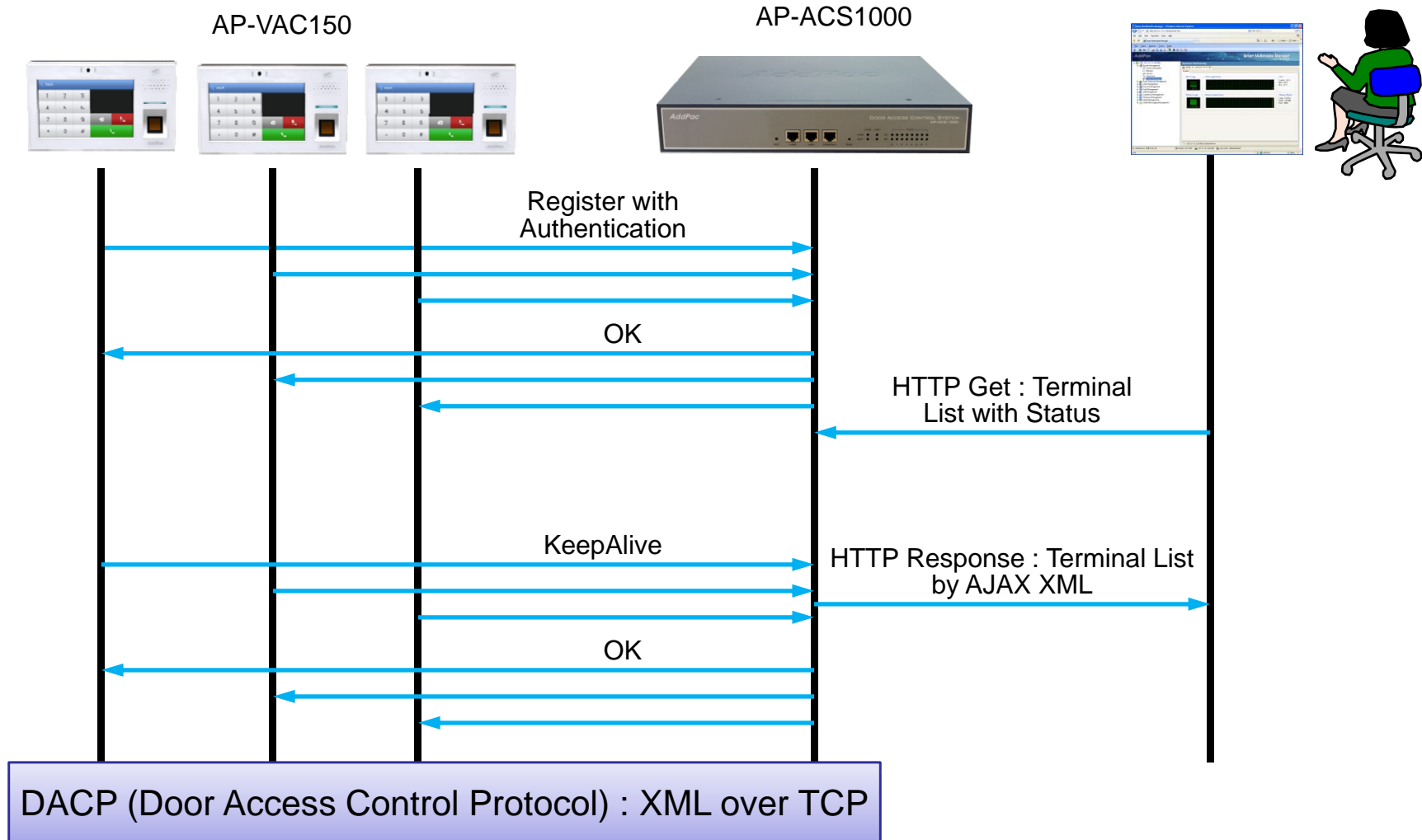
| | | |
|--------------|---|---|
| AP-N1-FXS8 |  A black 8-port FXS voice processing module with RJ11 ports numbered 0-7 and a central switch labeled 'HS'. | 8-Port FXS Voice Processing Module (8 x RJ11) |
| AP-N1-FXO8 |  A black 8-port FXO voice processing module with RJ11 ports numbered 0-7 and a central switch labeled 'HS'. | 8-Port FXO Voice Processing Module (8 x RJ11) |
| AP-N1-FXO4S4 |  A black 8-port voice processing module with 4 FXO and 4 FXS ports, numbered 0-7, and a central switch labeled 'HS'. | 4-Port FXO and 4-Port FXS Voice Processing Module (8 x RJ11) |
| AP-N1-E1T1 |  A black 1-port VoIP digital E1/T1 interface module with an RJ45 port and a switch labeled 'HS'. | 1-Port VoIP Digital E1/T1 Interface Module(1xRJ45) |



DACS System Message Flow

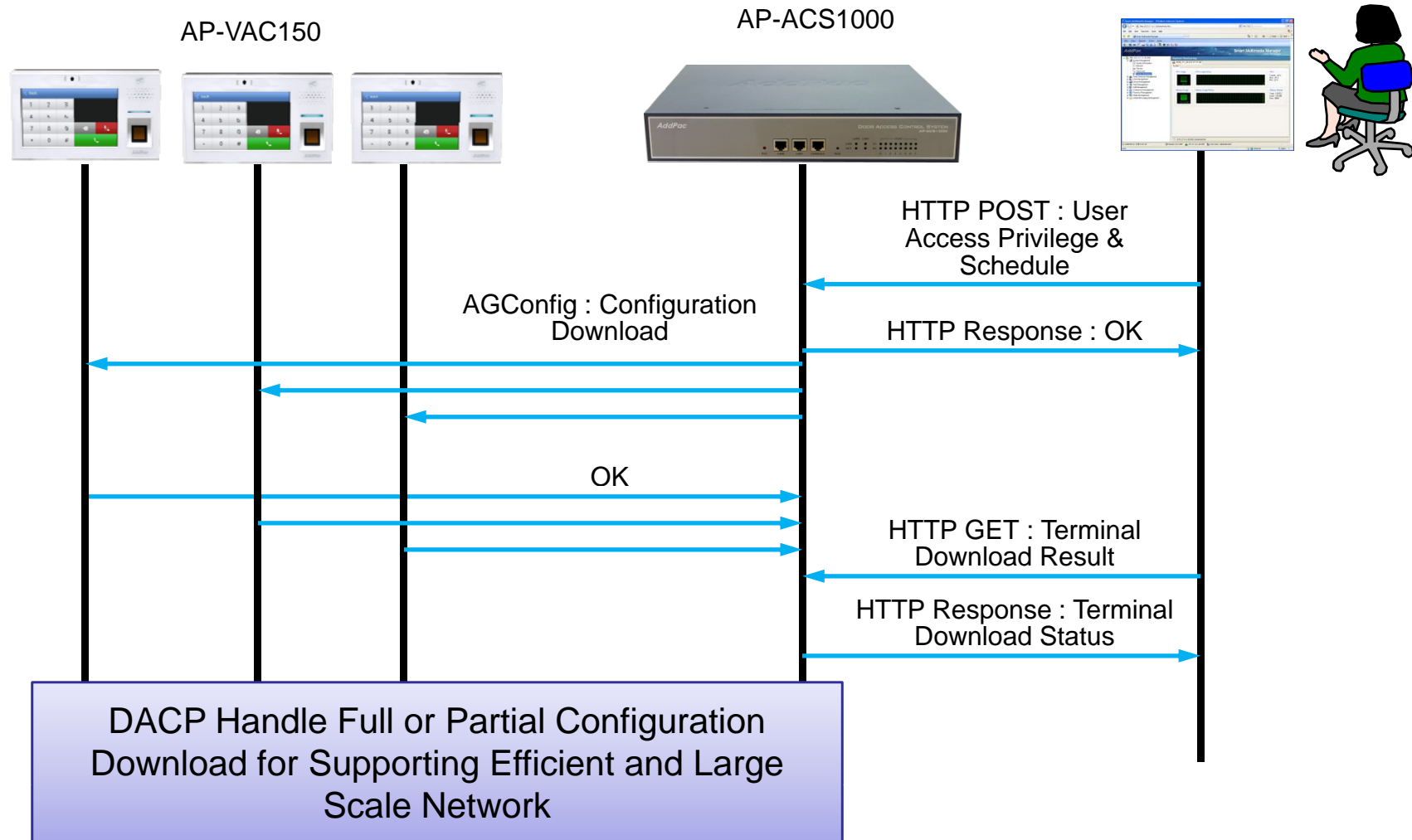
DACS System Message Flow

Registration and KeepAlive



DACS System Message Flow

Access Privilege and Schedule Download



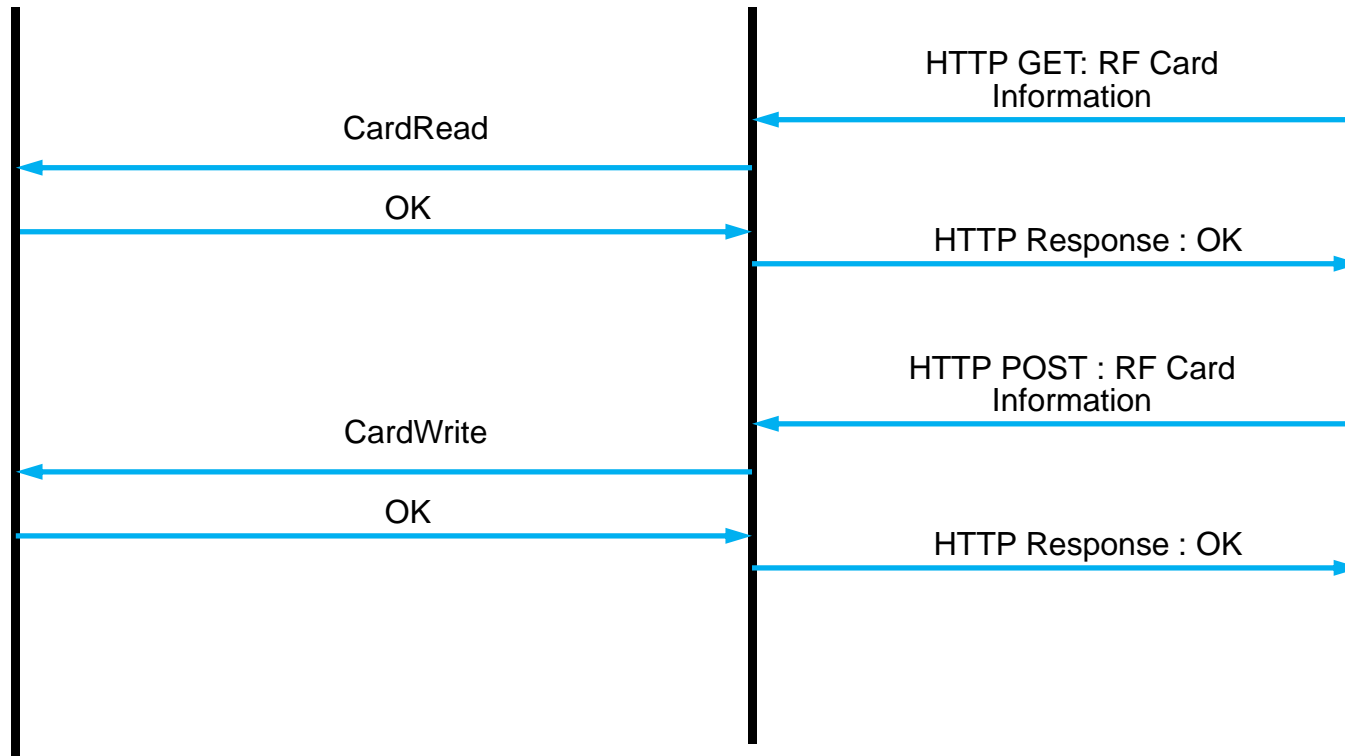
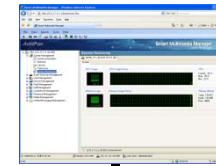
DACS System Message Flow

RF Card Read/Write and Registration

AP-VAC150

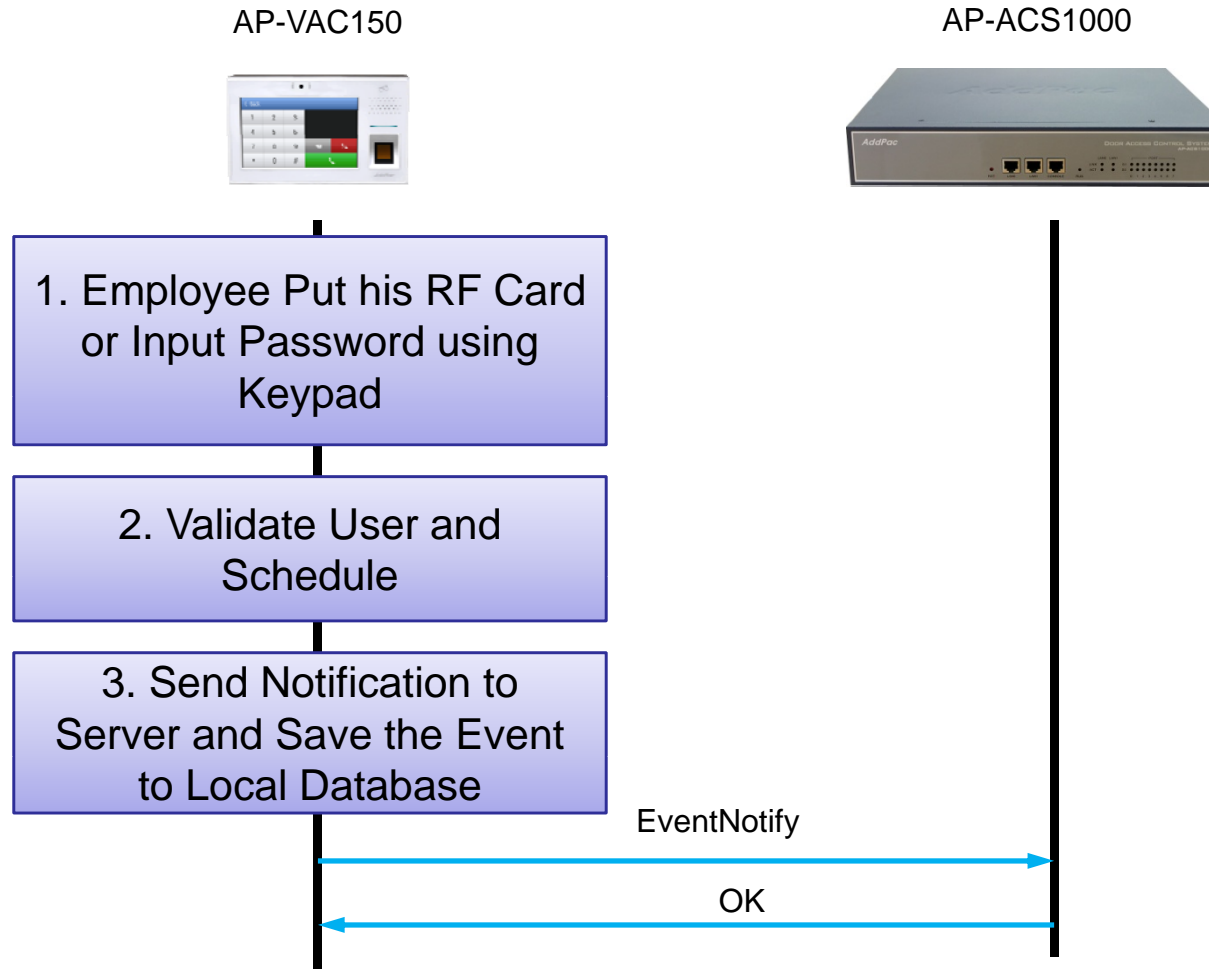


AP-ACS1000



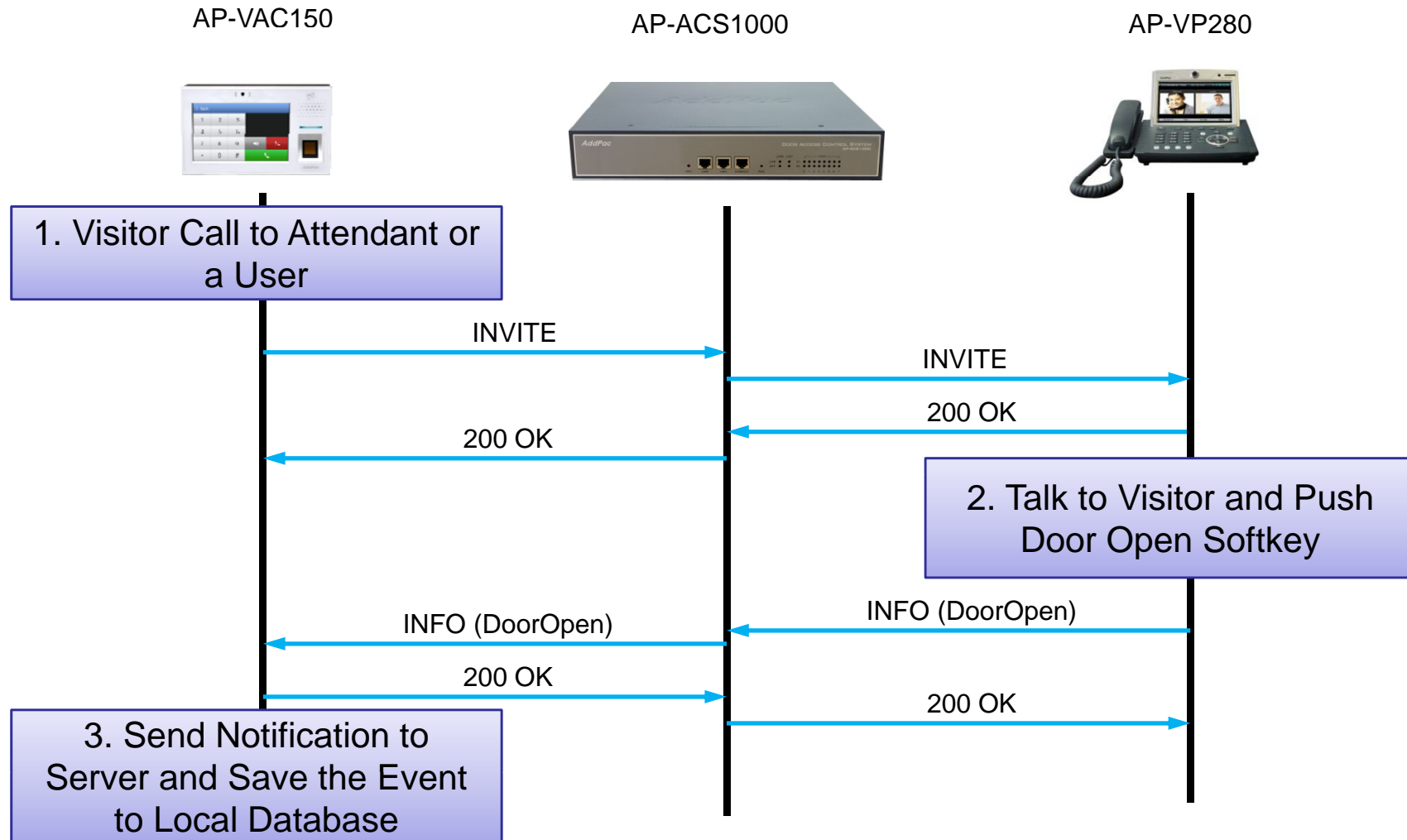
DACS System Message Flow

Door Open by RF Card or Password



DACS System Message Flow

Door Open by Other Terminal





Door Access Control Manager for AP-ACS1000

DACM (Door Access Control Manager)

Main Web Page

Door Access Control Manager
AddPac ver 1.0

Help | logout
Admin (administrators)

사용자 및 단말 관리 | 카드 관리 | 출입 통제 관리 | 로그 및 보고서

설정이 변경되었습니다.
설정을 반영하시려면 '여기'를 클릭하여 단말기 전송을 하십시오

화면이 갱신될 때마다 데이터 변경 여부를 판단하여 상단에 표시한다.
'여기'를 선택하여 단말기 전송 화면 실행

AddPac Technology의 출입 통제 관리 시스템에 오신것을 환영합니다.

본 시스템은 AddPac IP-Next 시스템과 연계되어 출입은 접근에 대한 사용자 및 출입 통제에 관련된 설정을 관리합니다. 아래 각 메뉴를 통해서 해당 기능을 수행할 수 있으며 상세한 설정은 왼쪽의 각 카테고리 메뉴 별로 접근할 수 있습니다.

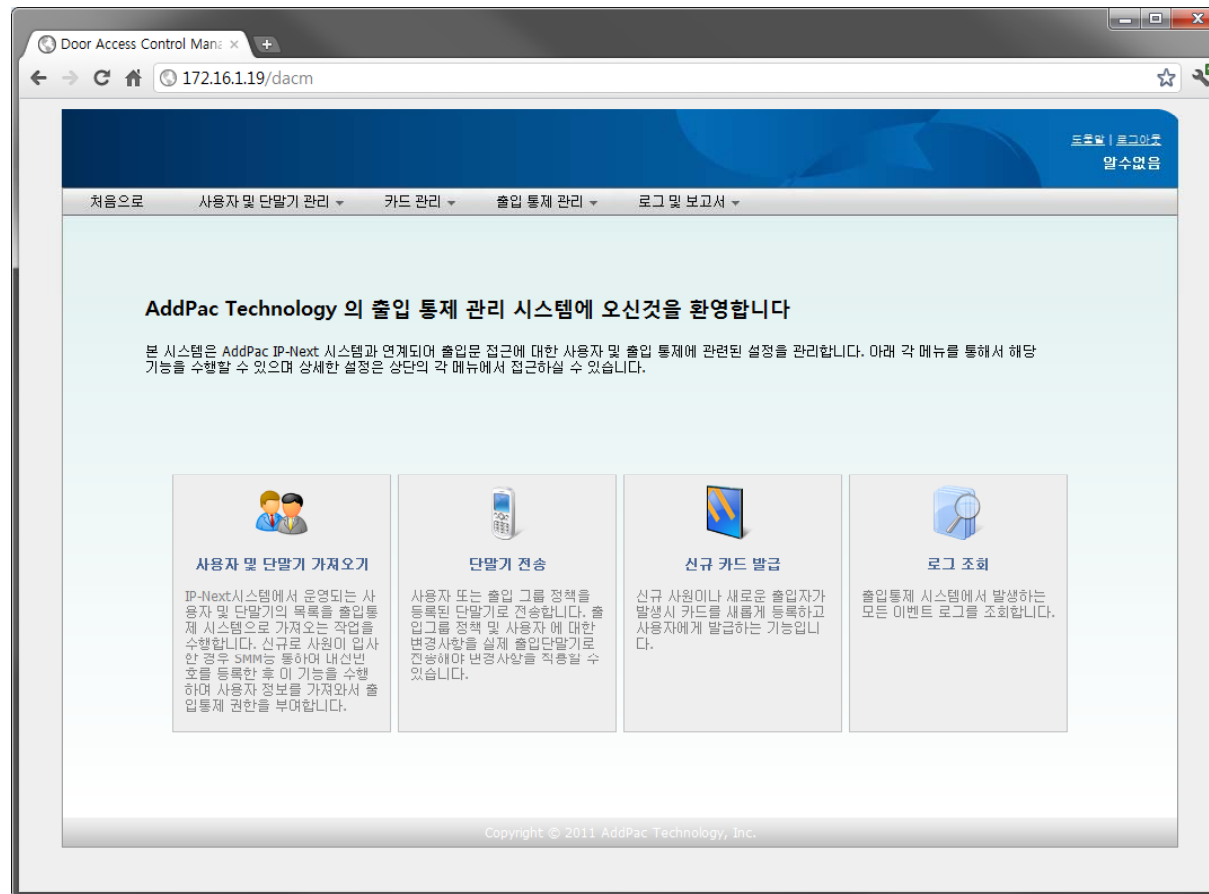
사용자 가져오기 | 단말기 전송 | 신규 카드 발급 | 로그 조회

메뉴를 선택하여 전송 화면 실행

Copyright AddPac Technology 2011, all rights reserved

DACM (Door Access Control Manager)

Main Web Page



DACM (Door Access Control Manager)

User Management

Door Access Manager
AddPac ver 1.0 Help | logout
Admin (administrators)

 사용자 가져오기

IP-Next PBX에 등록된 사용자 목록을 출입통제 시스템으로 동기화 하는 기능입니다.
이 기능은 설치 초기에 한번 수행하거나 신규 사원이 PBX에 등록된 경우에 출입이 필요한 경우 본 기능을 수행하여 카드를 발급하고 출입통제를 할 수 있습니다.

사용자

1. 사용자 목록 가져오기 선택

전체 사용자: 0, 변경됨: 0, 추가됨: 0, 삭제됨: 0

| <input checked="" type="checkbox"/> | 내선번호 | 이름 | 부서 | 상태 |
|-------------------------------------|------|--------|---------------|-------|
| <input checked="" type="checkbox"/> | 1000 | 홍길동 과장 | /본사/영업부 | ➕ 추가됨 |
| <input checked="" type="checkbox"/> | 1001 | 김철수 대리 | /본사/해외영업부 | ➕ 추가됨 |
| <input checked="" type="checkbox"/> | 1002 | 최진석 선임 | /연구소/SmartMgt | ➕ 추가됨 |
| <input checked="" type="checkbox"/> | 1003 | 권효준 | /연구소/SmartMgt | ➖ 삭제됨 |
| <input checked="" type="checkbox"/> | 1004 | 권중휘 책임 | /연구소/SmartMgt | ➕ 추가됨 |

2. 출입 통제 그룹 정책 선택

출입통제 그룹은 사용자 별로 일괄 적용되며 여러개의 그룹을 선택하실 수 있습니다. 선택하지 않은 경우에는 정책이 반영되지 않으며 사용자 별로 정책을 설정해야 합니다.

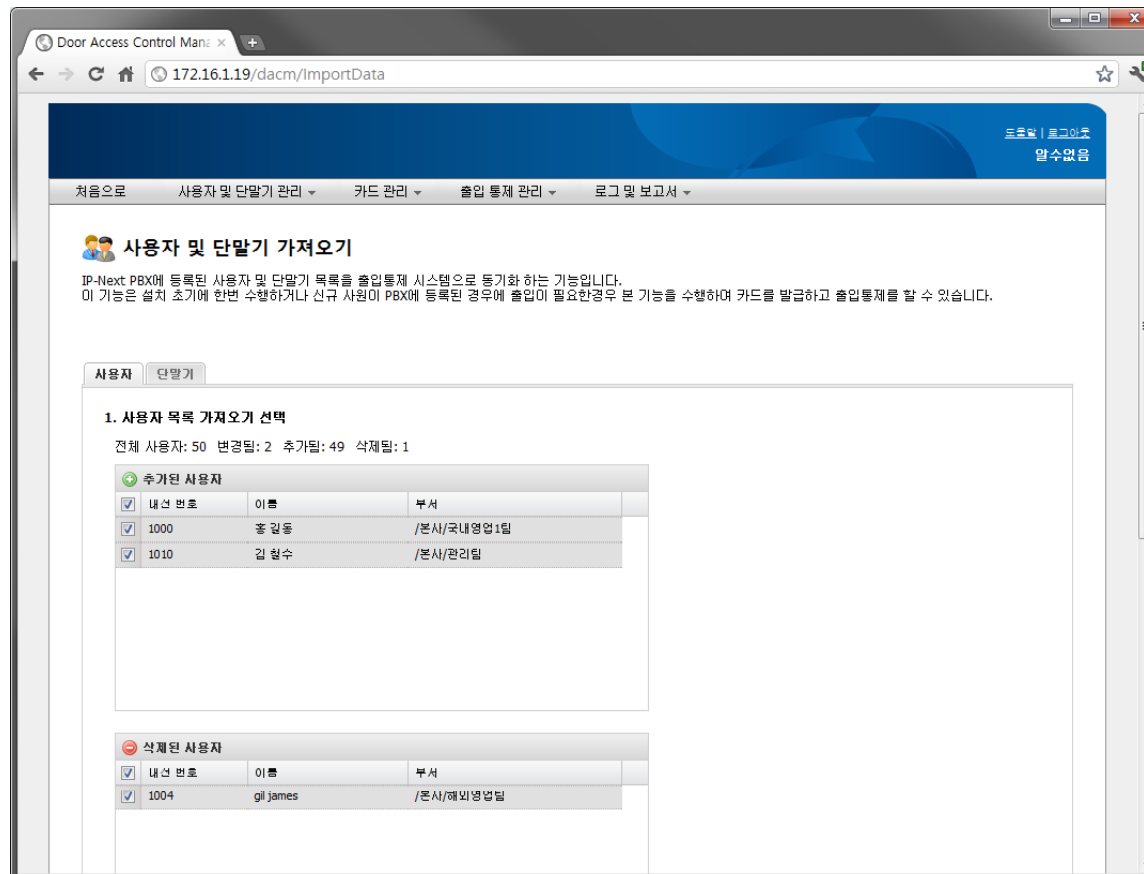
default policy
2층 출입
5층 출입
방장 출입 그룹

설정 항목을 적용하시려면 '가져오기'버튼을 아니면 '취소'버튼을 선택하십시오.

Copyright AddPac Technology 2011, all rights reserved

DACM (Door Access Control Manager)

User Management



DACM (Door Access Control Manager)

Access Group Management

Door Access Control Man: x

172.16.1.19/dacm/accessGroupList

드문발 | 로그인
알수없음

처음으로 사용자 및 단말기 관리 카드 관리 출입 통제 관리 로그 및 보고서

출입 통제 그룹

등록된 출입단말기에 대해서 출입 권한 리스트 조회하거나 신규로 등록 및 수정할 수 있습니다.
출입 통제 그룹은 위/아래 화살표를 이용하여 우선순위를 조정할 수 있습니다.

출입 통제 그룹 등록

| 그룹 이름 | 설명 | 스케줄 정책 | 생성 날짜 | 수정 | 삭제 |
|----------------|-------------|-------------|---------------------|----|----|
| no restriction | 출입제한 없음 | N/A | 2011-06-27 12:23:12 | | |
| 3F_only | 3층만 출입 | N/A | 2011-06-27 12:23:12 | | |
| research_only | 연구수 출입 정보 | working_day | 2011-06-27 12:23:12 | | |
| 5Floor | 5층연구소 | working_day | 2011-06-27 12:23:12 | | |
| 관리사무소 | 관리사무소 출입 정보 | working_day | 2011-06-27 12:23:12 | | |

페이지 1 / 1

Displaying 1 - 5 of 5

DACM (Door Access Control Manager)

Configuration Download to Terminal

The screenshot shows the 'Door Access Control Manager' web interface. The header includes the title 'Door Access Control Manager', version 'ver 1.0', and a warning message: '설정이 변경되었습니다. 설정을 반영하시려면 '여기'를 클릭하여 단말기 동기화를 하십시오.' (Settings have been changed. Click 'here' to refresh the terminal synchronization settings). The navigation menu includes '사용자 및 단말 관리', '카드 관리', '출입 통제 관리', and '로그 및 보고서'. The main content area is titled '단말기 전송' (Terminal Transfer) and contains a table of terminal configurations.

| <input checked="" type="checkbox"/> | 장비명 | IP 주소 | 접속 상태 | 변경 여부 | 전체 동기화 |
|-------------------------------------|----------------|-------------|-------|---------|----------|
| <input type="checkbox"/> | 3F door phone | 172.16.10.5 | 접속됨 | 변경사항 없음 | |
| <input checked="" type="checkbox"/> | lobby entrance | 172.16.5.20 | 접속끊김 | 변경됨 | |
| <input checked="" type="checkbox"/> | 5F door phone | 172.16.10.6 | 접속됨 | 변경됨 | |
| <input checked="" type="checkbox"/> | factory main | 172.16.10.8 | 접속됨 | 변경사항 없음 | 전체 반영 필요 |

동기화가 필요 없는 경우에는 check 가 해지된다. 강제로 하고자 하는 경우 check하면 된다.

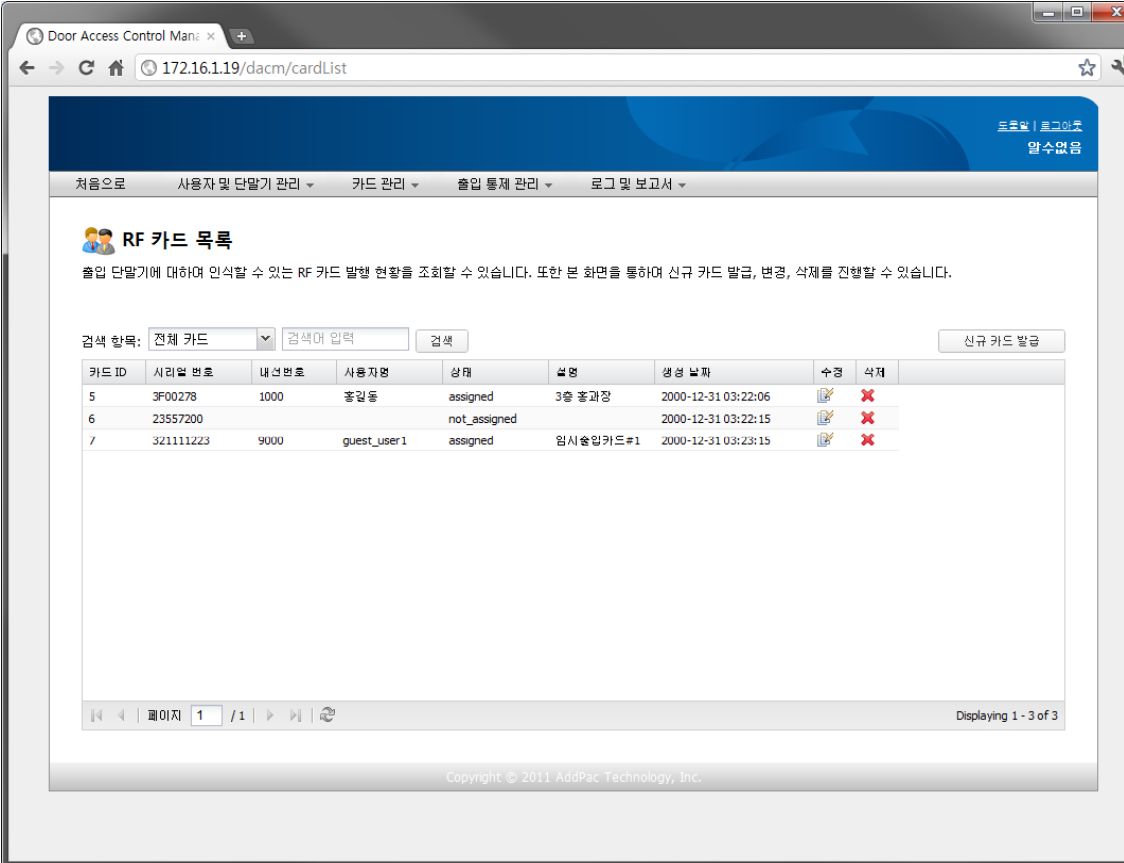
위 선택된 단말기에 데이터를 전송하려면 아래 '전송' 버튼을 선택하거나 작업을 취소하시려면 '취소' 버튼을 선택하십시오.

Buttons: 전송, 취소

Copyright AddPac Technology 2011. all rights reserved.

DACM (Door Access Control Manager)

RF Card Management



Door Access Control Manager

172.16.1.19/dacm/cardList

로그인 | 로그아웃
알수없음

처음으로 사용자 및 단말기 관리 카드 관리 출입 통제 관리 로그 및 보고서

RF 카드 목록

출입 단말기에 대하여 인식할 수 있는 RF 카드 발행 현황을 조회할 수 있습니다. 또한 본 화면을 통하여 신규 카드 발급, 변경, 삭제를 진행할 수 있습니다.

검색 항목: 전체 카드 검색어 입력 검색 신규 카드 발급

| 카드 ID | 시리얼 번호 | 내선번호 | 사용자명 | 상태 | 설명 | 생성 날짜 | 수정 | 삭제 |
|-------|-----------|------|-------------|--------------|----------|---------------------|----|----|
| 5 | 3F00278 | 1000 | 종업원 | assigned | 3층 종과장 | 2000-12-31 03:22:06 | | |
| 6 | 23557200 | | | not_assigned | | 2000-12-31 03:22:15 | | |
| 7 | 321111223 | 9000 | guest_user1 | assigned | 임시출입카드#1 | 2000-12-31 03:23:15 | | |

페이지 1 / 1

Displaying 1 - 3 of 3

Copyright © 2011 AddPac Technology, Inc.

DACM (Door Access Control Manager)

Access Log Management

Door Access Control Manager

172.16.1.19/dacm/eventLog

도호빌 로그아웃
알수없음

처음으로 사용자 및 단말기 관리 카드 관리 출입 통제 관리 로그 및 보고서

이벤트 로그 조회

등록된 출입 단말기의 모든 출입현황을 검색을 통해서 조회 및 출력합니다.

조회 기간: [] ~ []

출입 단말기 이름: []

사용자 내선번호: []

이벤트 등급: []

검색

| 시간 | 등급 | 단말기 이름 | 내선번호 | 이벤트 |
|---------------------|-----|----------|------|------------------------|
| 2001-01-03 14:39:56 | 경고 | 3F_floor | 1000 | authentication success |
| 1973-02-07 08:00:00 | 경고 | 3F_floor | 1000 | system started |
| 2001-01-03 14:46:39 | 디버그 | 3F_floor | 1010 | unknown user accessed |

페이지 1 / 1

Displaying 1 - 3 of 3

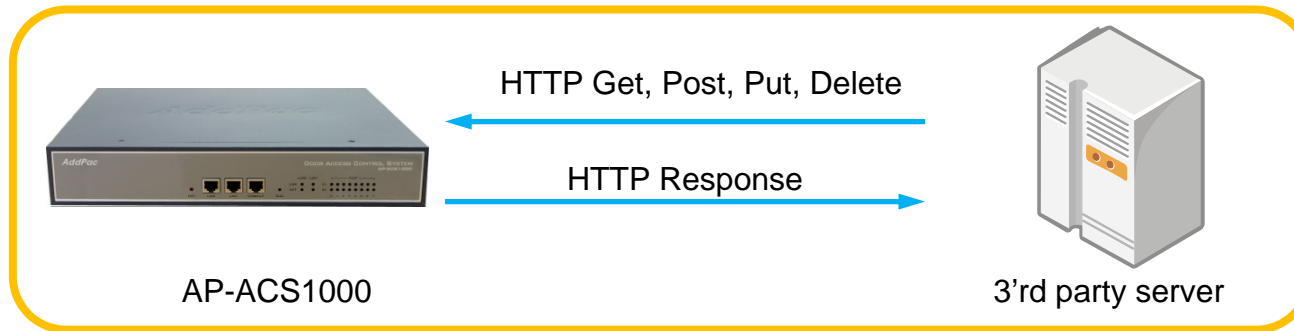
Copyright © 2011 AddPac Technology, Inc.



AP-ACS1000 Open API

Open API

Open API for 3'rd Party Management System

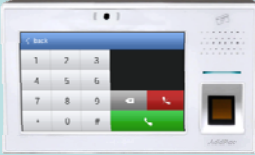




- HTTP based RESTful Open API for Door Access Management
- XML based Flexible and Expandable Message Contents
- Provides More than 40 APIs as Bellow
 - user_list(GET), user(GET, POST, PUT, DELETE), ...
 - terminal_list(GET), terminal(GET, POST, PUT, DELETE), ...
 - access_group(GET, POST, PUT, DELETE), priority (PUT), ...
 - card_list(GET), card(POST, PUT, DELETE), ...
 - schedule_template(GET, POST, PUT, DELETE), rule(GET, POST, PUT, DELETE) ,...



Touch Screen IP Video Door Phones

Touch Screen IP Video Door Phone Comparison Table

| Model | AP-VAC150 | AP-VAC80 |
|---------------------|--|---|
| Service Features |  |  |
| Duplex (Voice) | Full Duplex | Full Duplex |
| Key Pad | Touch Screen based Key Support | Touch Screen based Key Support |
| LCD | 5 Inch LCD | 5 inch LCD |
| RF Card | Support | Support |
| Fingerprint | Support | N/A |
| Video Camera | SD (CMOS Sensor) | SD (CMOS Sensor) |
| Video Codec | H.264/MPEG4 | H.264/MPEG4 |
| Voice Codec | G.711 | G.711 |
| Signaling | H.323/SIP | H.323/SIP |
| MIC & Speaker Phone | Support | Support |
| LAN Port | 1 | 1 |
| PoE(Optional) | Support | Support |



AP-VAC150 Touch Screen IP Video Door Phone

Main Features

AP-VAC150 Fingerprint Recognition IP Video Door Phone

- High Performance IP Video Door Phone Solution
- Video Camera, Touch Screen TFT Color LCD, Internal MIC & Speaker
- High Quality 5 Inch LCD, 800 x 480 Video Resolution
- Fingerprint Recognition Support
- RF Card Support
- SIP VoIP Signaling Stack Embedded
- High-performance Video/Voice Codec Support
 - H.264/MPEG4, G.711, etc
- One(1) 10/100Mbps Fast Ethernet
- PoE(Power over Ethernet) Support
- High Quality Speaker Phone Features
- Powerful Acoustic Echo Canceller Chip Embedded
- Powerful Network Protocols (PPPoE, DHCP, Static Routing, etc)
- Firmware Upgradeable Architecture
- Advanced Voice QoS Mechanism

Hardware Specification

AP-VAC150 Fingerprint Recognition HD IP Video Door Phone

RISC
CPU

High-end
DSP

- RISC+DSP Microprocessor Computing Power
- Audio and Voice Interface
 - Internal MIC
 - Internal Speaker
- Video Camera Interface
- Touch Screen TFT Color LCD Interface
 - 5 Inch LCD, 800 x 480 Video Resolution
- Network Interface
 - One(1) 10/100Mbps Fast Ethernet
- Fingerprint Recognition Interface
- RF Card Interface
- Alarm & Relay Out Interface (door open, etc)
- RS232/RS485 Interface
- Power Supply
 - Power over Ethernet (Option)
 - External Power Supply

Hardware Specification

AP-VAC150 Fingerprint Recognition IP Video Door Phone

RISC
CPU

High-end
DSP

Front Side



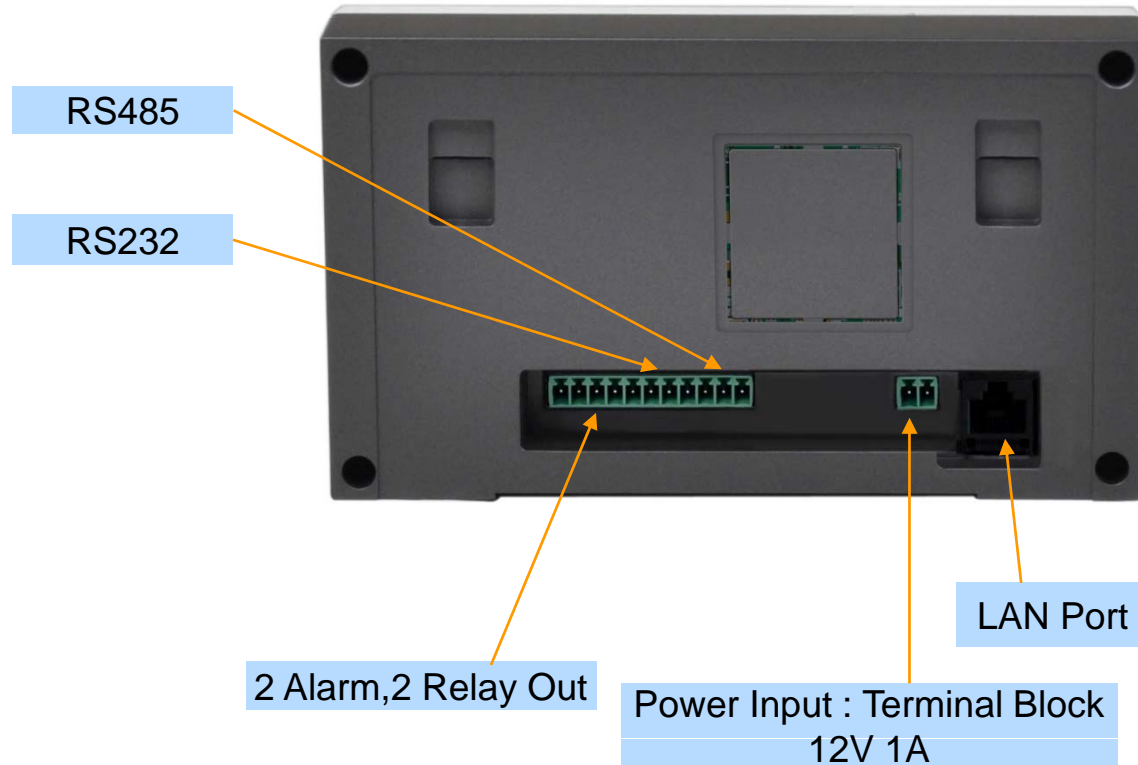
Hardware Specification

AP-VAC150 Fingerprint Recognition HD IP Video Door Phone

RISC
CPU

High-end
DSP

Back Side



Hardware Specification

AP-VAC250 Fingerprint Recognition HD IP Video Door Phone

RISC
CPU

High-end
DSP

Power Supply

Terminal Block



12V 1A Power Adaptor

Example





AP-VAC80 IP Video Door Phone

Main Features

AP-VAC80 IP Video Door Phone

- High Performance IP Video Door Phone Solution
- Video Camera, Touch Screen TFT Color LCD, Internal MIC & Speaker
- High Quality 5 Inch LCD, 800 x 480 Video Resolution
- SIP VoIP Signaling Stack Embedded
- High-performance Video/Voice Codec Support
 - H.264/MPEG4, G.711, etc
- One(1) 10/100Mbps Fast Ethernet
- PoE(Power over Ethernet) Support
- High Quality Speaker Phone Features
- Powerful Acoustic Echo Canceller Chip Embedded
- Powerful Network Protocols (PPPoE, DHCP, Static Routing, etc)
- Firmware Upgradeable Architecture
- Advanced Voice QoS Mechanism

Hardware Specification

AP-VAC80 IP Video Door Phone

RISC
CPU

High-end
DSP

- RISC+DSP Microprocessor Computing Power
- Audio and Voice Interface
 - Internal MIC
 - Internal Speaker
- Video Camera Interface
- TFT Color LCD Interface
 - 5 Inch LCD, 800 x 480 Video Resolution
- Network Interface
 - One(1) 10/100Mbps Fast Ethernet
- RF Card Interface
- Alarm & Relay Out Interface (door open, etc)
- RS232/RS485 Interface
- Power Supply
 - Power over Ethernet (Option)
 - External Power Supply

Hardware Specification

AP-VAC80 IP Video Door Phone

RISC
CPU

High-end
DSP

Front Side



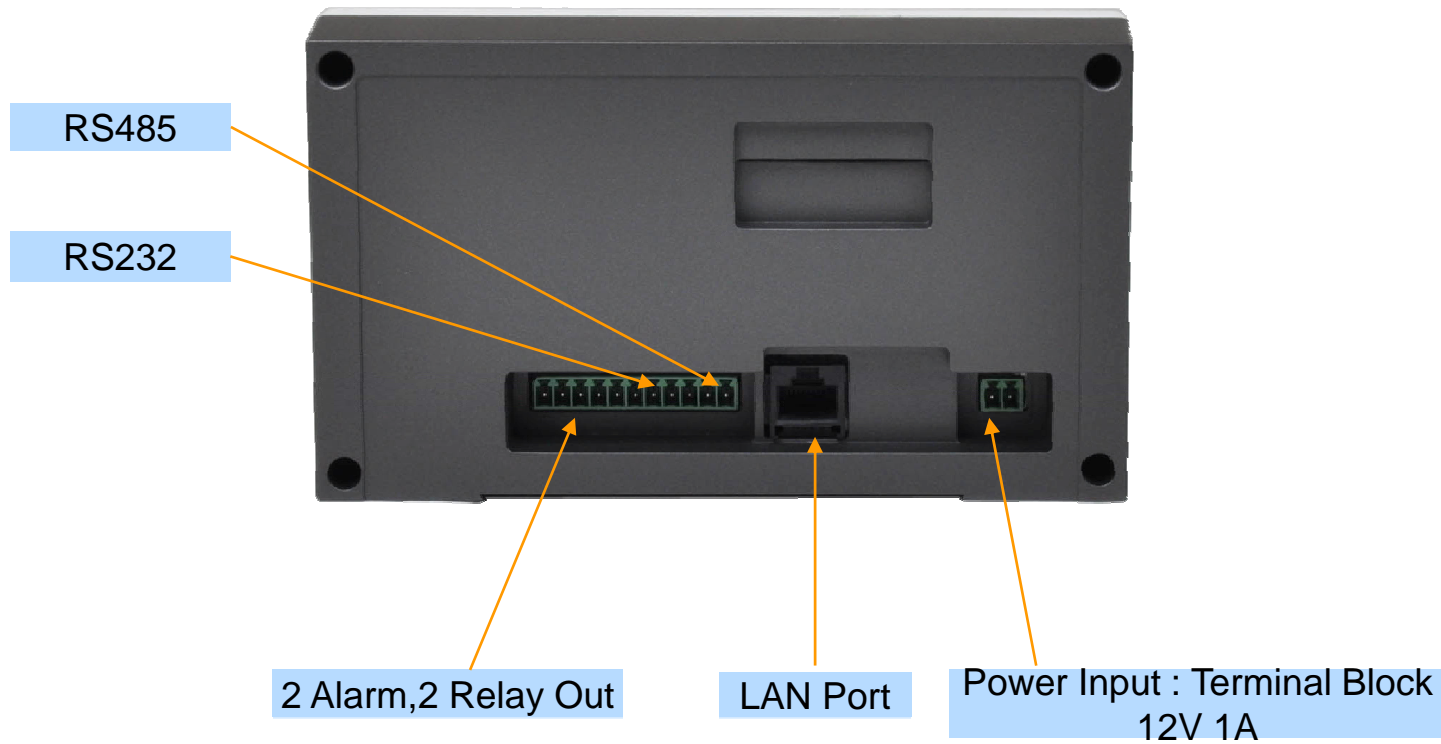
Hardware Specification

AP-VAC80 IP Video Door Phone

RISC
CPU

High-end
DSP

Back Side





Smart Web Manager for IP Video Door Phone

Smart Web Manager

- Main Screen
- System
 - Language
 - LAN Setup
 - DACS
 - Display
 - File Browser
- SIP Call & Media
 - SIP (Session Initiation Protocol)
 - Speed Dial
 - Media
- Miscellaneous
 - Door Control and Test
 - Network Test



Smart Web Manager : Main Screen

The screenshot displays the Smart Web Manager interface. At the top left, the logo 'Smart Web Manager' and the URL 'www.addpac.com' are visible. The top right corner contains four icons: a gear for 'Initialization', a power button for 'Rebooting', a floppy disk for 'Save', and a terminal icon for 'Telnet'. The main content area is divided into three sections:

- Menu Tree (Left):** A sidebar with three expandable sections: 'System' (Language, LAN Setup, DACS, Display Manager, File Browser), 'Call & Media' (Server SIP, Speed Dial, Media), and 'Miscellaneous' (Ping, Door Open).
- Configure Language (Center):** A configuration panel with two radio buttons: '한국어' (unselected) and 'English' (selected). Below the buttons is an 'Apply' button with a green checkmark icon.
- System Information and Help Message (Right):** A panel with two sections: 'Information' (AddPac Technology, Model: VAC50_G2, DACS: (0), DACS Registration: Fail, SIP: 172.17.250.250(5060)) and 'Description' (Choose the basic language to be applied. English is set at default).

Menu Tree

Output Screen after
Menu Select

System Information and
Help Message

Smart Web Manager : SIP configuration

SIP (Session Initiation Protocol)

SIP server check if exist.

SIP Basic Information Display

Telephone Line Number and Password Configuration
Same Information is used when DACS is connected

Use SIP Server

Yes No

Primary SIP Server

172.17.250.250 5060 Server address and Port (default 5060)

Secondary SIP Server

5060 Server address and Port (default 5060)

Local Domain Name

(SIP userpart of authentication)

SIP Signaling Port

5060 (default 5060, between 1 to 65535)

Register Expiration

60 (in seconds, default 60, between 10 to 86400)

Session Re-Fresh

INVITE UPDATE

Session Expire Time

1800 (in seconds, default 1800, between 30 to 86400, 0 = disable)

Min-SE

1800 (in seconds, default 1800, between 30 to 86400)

Extension

1020 Extension Number, Password

AP-SMP100 IP Video Soft Phone



Main Features

AP-SMP100 IP Video Soft Phone

- MS-Window based Soft-Phone
- Smart Multimedia (Video/Voice) Soft-Phone
- IP Real-time Audio/Video Broadcasting Terminal Solution
- Built-In Smart Messenger Function
- Up to 30fps with VGA-Resolution(MPEG4, H.264)
- Video Conference Call Support (AddPac External MCU Inter-working)
- Advanced Voice/Video Traffic QoS
- SIP, H.323* Signaling Support
- Support Various Call Signal via AddPac IP-PBX Inter-working

OSD Software Features

AP-SMP100 IP Video Soft Phone



OSD Software Features

AP-SMP100 IP Video Soft Phone



OSD Software Features

AP-SMP100 IP Video Soft Phone



OSD Software Features

AP-SMP100 IP Video Soft Phone



- ⑥ Configuration - 설정화면 실행버튼
- ⑦ Dialpad - 다이얼패드 실행버튼
- ⑧ Video On/Off - 통화중 영상화면 온/오프
- ⑨ Audio On/Off - 통화중 음성 온/오프
- ⑩ Scale Up Down - 영상화면 크기변경
- ⑪ Split Screen - 영상화면 분리버튼

- ① File
 - Edit Preference
 - Edit Call Manager
 - Set Audio Option
 - Set Video Option
 - Close
- ② View
 - Dial Pad
 - Zoom In
 - Zoom Out
- ③ Session
 - Connect Call
 - End Call
 - Volume Up
 - Volume Down
 - Audio On/Off
 - Video On/Off
- ④ Soft-Key
 - Redial
 - Pickup
 - GroupPickup
 - CCBS
- ⑤ Help
 - About



Thank you!

AddPac Technology Co., Ltd.
Sales and Marketing

Phone +82.2.568.3848 (KOREA)

FAX +82.2.568.3847 (KOREA)

E-mail : sales@addpac.com