

AP-NRC50

Network RFID Controller

High Performance Network RFID Controller Solution



Preliminary Product Overview

(Without notice, following described technical spec. can be changed)

AddPac

AddPac Technology

2014, Sales and Marketing

www.addpac.com

Contents

- Product Overview
- Product Highlights
- Hardware Specification
- Software Service
- Smart Web Manager
- Application Area
- Ordering Information

Product Overview

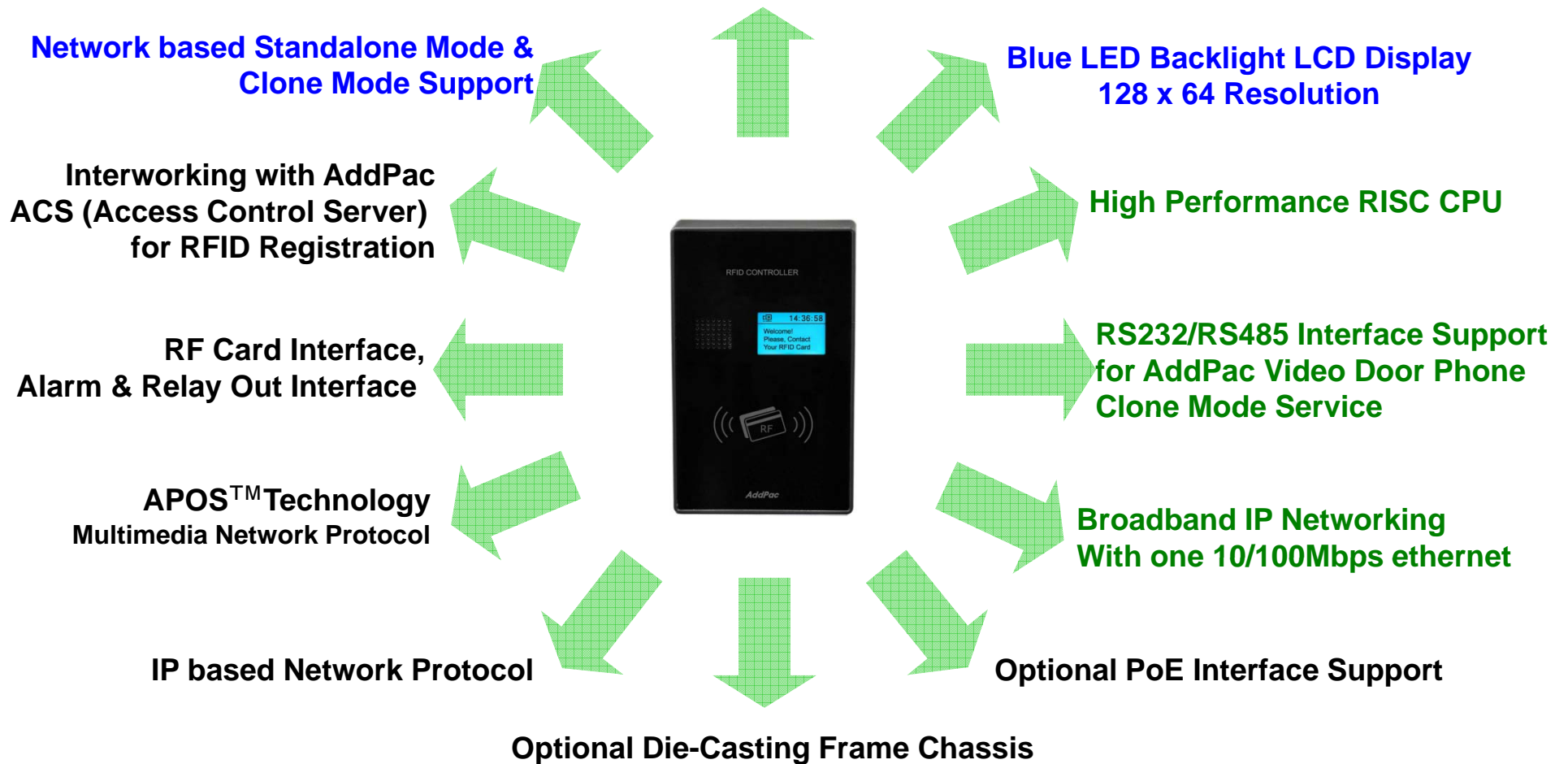
AP-NRC50 Network RFID Controller

- High Performance Network RFID Controller Solution : Standalone Mode
- RS232/RS485 Interface Support for AddPac IP Video Door Phone Interworking : Clone Mode
- Interworking with AddPac ACS(Access Control Server) for RFID Registration
- Internal Speaker
- Blue LED Backlight LCD, 128 x 64 Display Resolution
- One(1) 10/100Mbps Fast Ethernet
- PoE(Power over Ethernet) Support
- Powerful Network Protocols (PPPoE, DHCP, Static Routing, etc)
- Firmware Upgradeable Architecture
- Advanced Voice QoS Mechanism
- **Die-casting Frame Chassis : Option***

Product Highlights

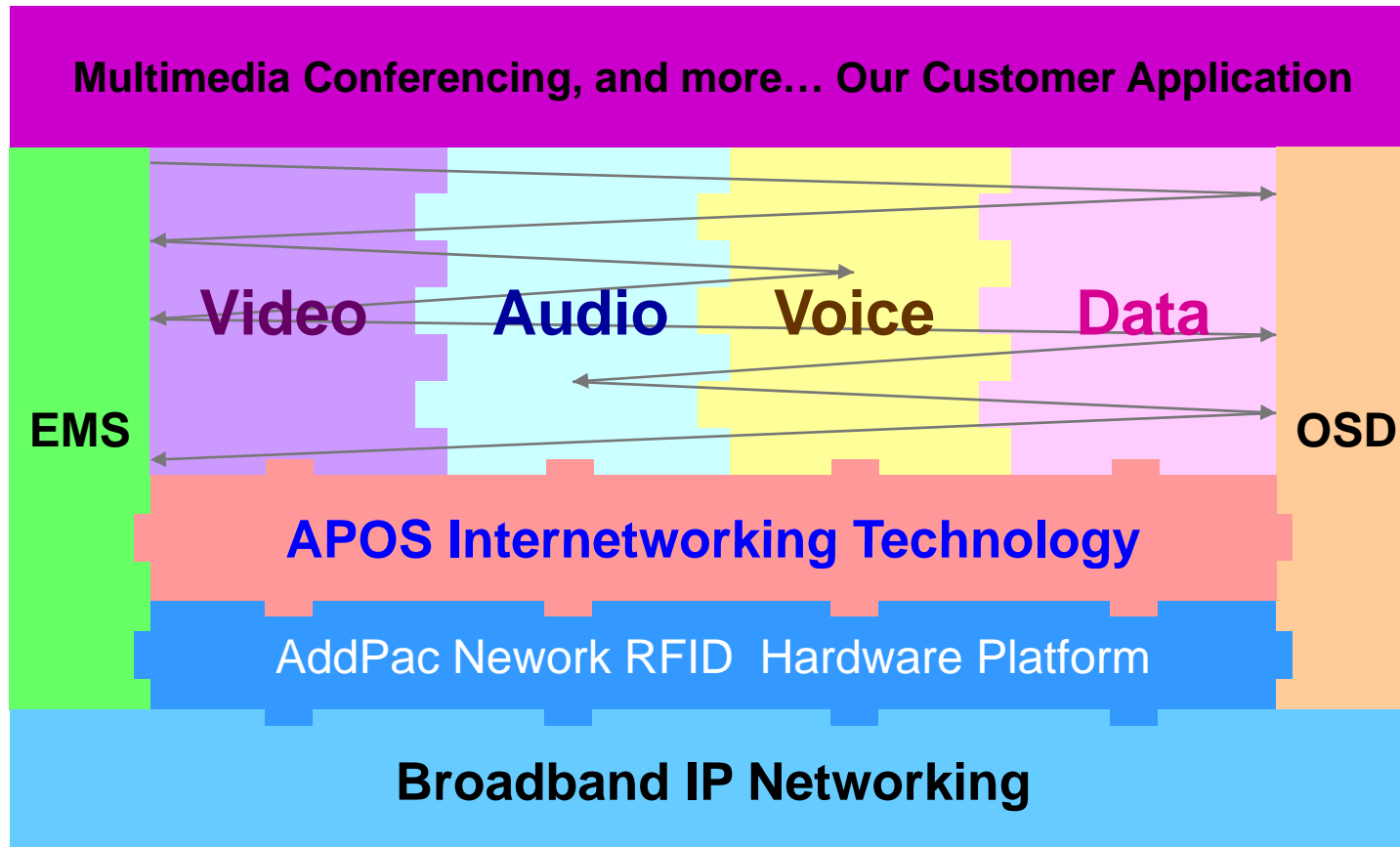
AP-NRC50 Network RFID Controller

Network based RFID System



Multimedia Service

AP-NRC50 Network RFID Controller



- APOS : AddPac Internetworking Operating System
- OSD : On- Screen Display
- EMS : Element Management System

Hardware Specification

AP-NRC50 Network RFID Controller

RISC
CPU

- RISC Microprocessor Computing Power
- Audio and Voice Interface
 - Internal Speaker
- Blue LED Backlight LCD Interface
 - 128 x 64 Video Resolution
- Network Interface
 - One(1) 10/100Mbps Fast Ethernet
- RF Card Interface
- Alarm & Relay Out Interface (door open, etc)
- RS232/RS485 Interface
- Power Supply
 - Power over Ethernet (Option)
 - External Power Supply

Hardware Specification

AP-NRC50 Network RFID Controller

RISC
CPU

- **LCD Controller**
 - Display Type : FSTN, Positive
 - Built-in Controller : ST7567
 - Blue LED Backlight
 - Active Area : 35.48(W) x 22.38(H)
 - Number of Dots : 128 x 64
- **Speaker**
 - Impedance : 8 +-15%ohm at 1kHz, 1.0 Vrms
 - Sound Pressure : 90 +- 3dB at 0.1W/10 CM
at 800Hz, 1.0kHz, 1.2kHz, 1.5kHz
 - Resonance Level : 550Hz +- 20%Hz at Fo Hz, 1.0Vrms
 - Frequency Range : Fo Hz ~20kHz
 - Input Power : Normal : 1.0 W, Max : 2.0W
- **PoE(Power over Ethernet)**
 - IEEE802.3af compliant
 - Input voltage range 36V to 57V
 - Short-circuit Protection

Hardware Specification

AP-NRC50 Network RFID Controller

RISC
CPU

- RF Card Sensor
 - Protocol Supported
 - ISO14443A/B all bit rates
 - > 106,212,424 and 848 kbps
 - Compatible to MiFare Classic
 - ISO15693 all modes
 - > 1.65/6.6 & 26.5 kbps
 - > Uplink 1 & 2 sub-carrier
 - Receiver
 - Rx Sensitivity down to 1mVrms
 - Rx Automatic Gain Control
 - Accept external baseband signal from external circuitry for frame level processing
 - Integrated signal strength indicator (SSI)
 - On-Chip Framing handler for supported standard
 - Transmitter
 - Typical proximity operating distance up to 100mm.
 - Software configurable modulation index
 - Maximum driving current up to 200 mA/PIN @ 5V
 - Accept external baseband signal for RF modulation
 - Wide Transmitter driver supply range from 2.7~7.0V



RF Card Sensor

Hardware Specification

AP-NRC50 Network RFID Controller



Front Side

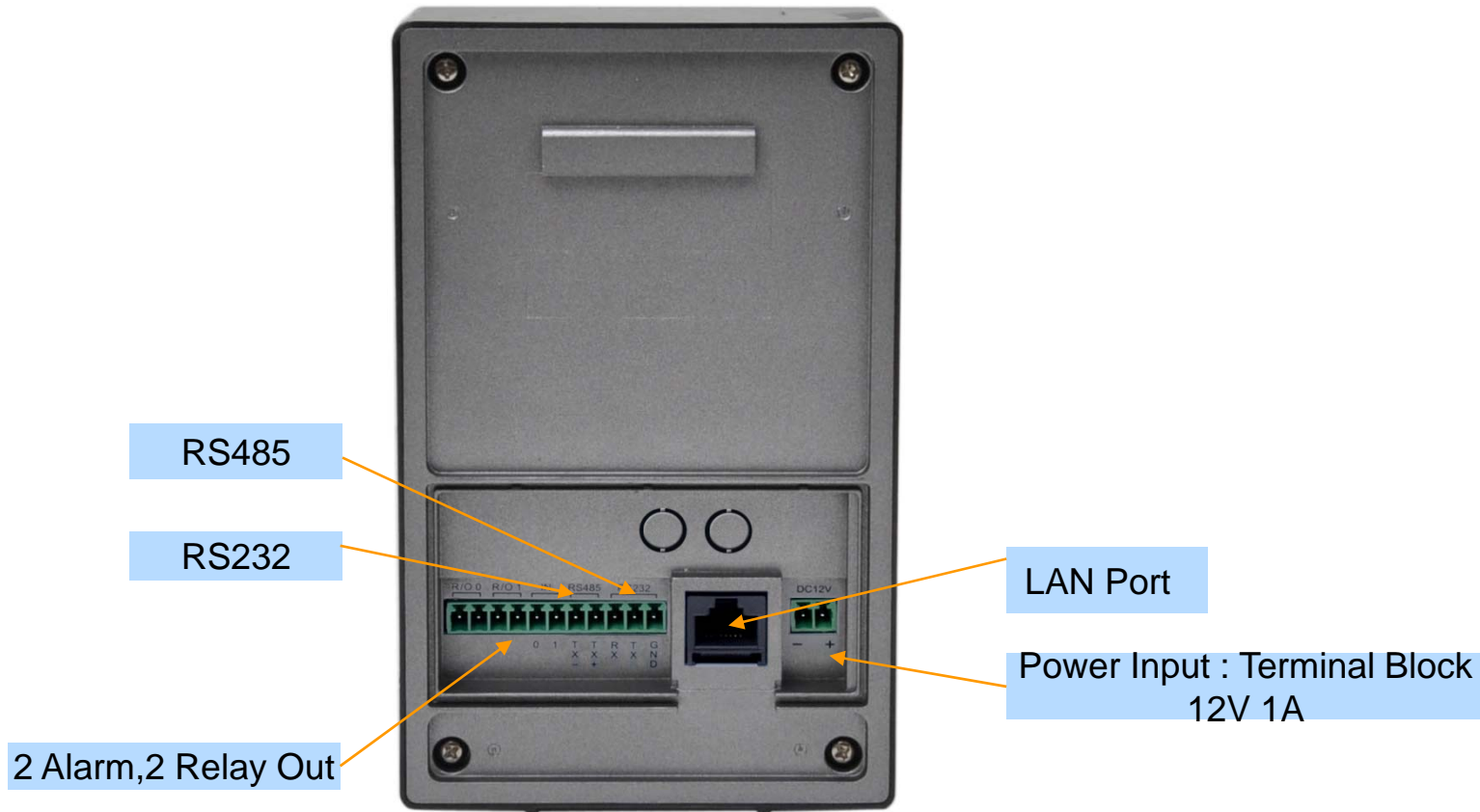


Hardware Specification

AP-NRC50 Network RFID Controller



Back Side

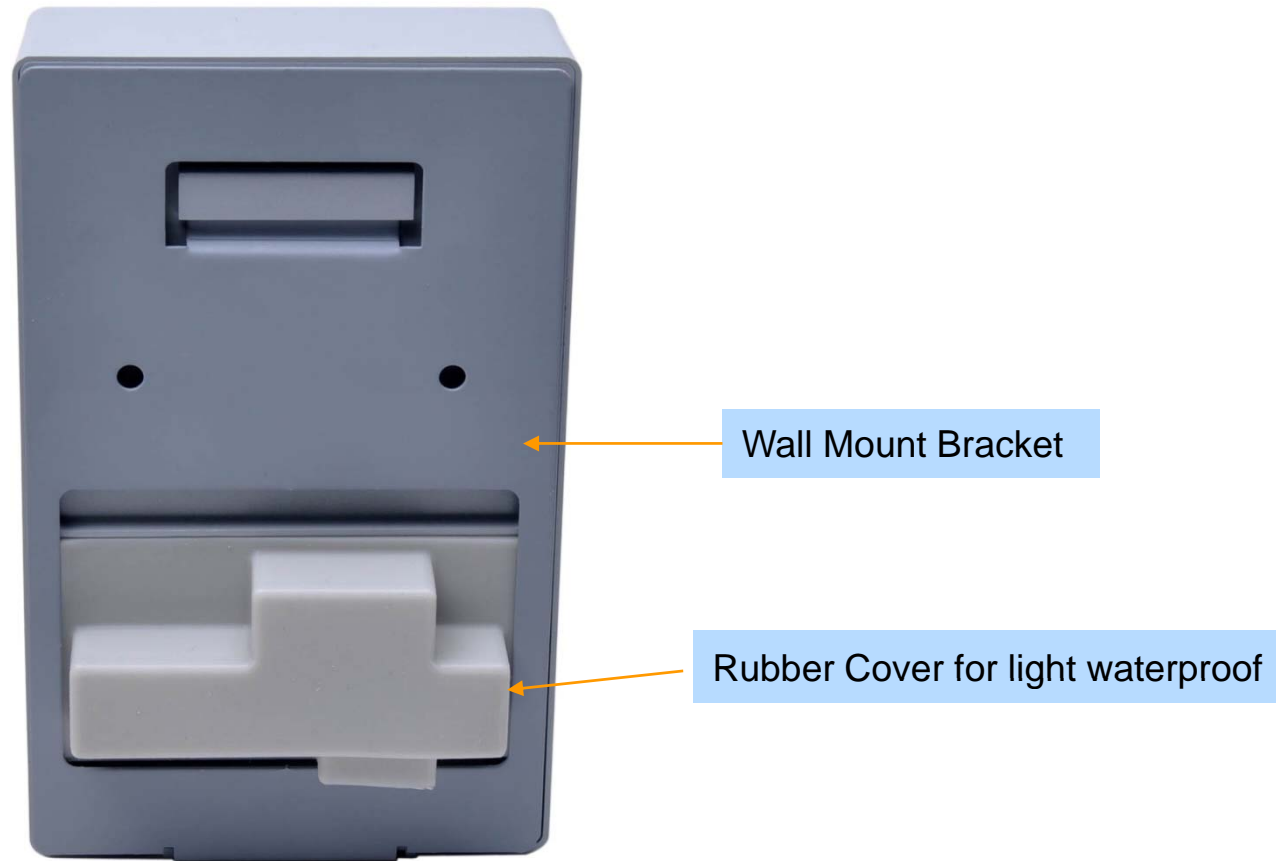


Hardware Specification

AP-NRC50 Network RFID Controller

RISC
CPU

Back Side



Hardware Specification

AP-NRC50 Network RFID Controller

RISC
CPU

High-end
DSP

Power Supply

Terminal Block



12V 1A Power Adaptor

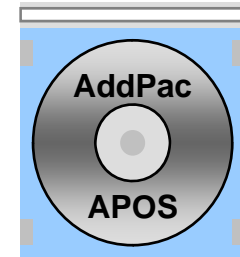
Example



Software Service

AP-NRC50 Network RFID Controller

- Built-in AddPac APOS Internetworking Software
 - Scalability, Functionality, and Stability Features
- Firmware Upgradeable DSP Architecture
- Network RFID Control Function Support
- RS232/RS485 based RFID Control Function Support
 - : AddPac Video Door Phone Clone Mode Service
- Industry Standard IP based Network Protocol Features





Smart Web Manager (Example)

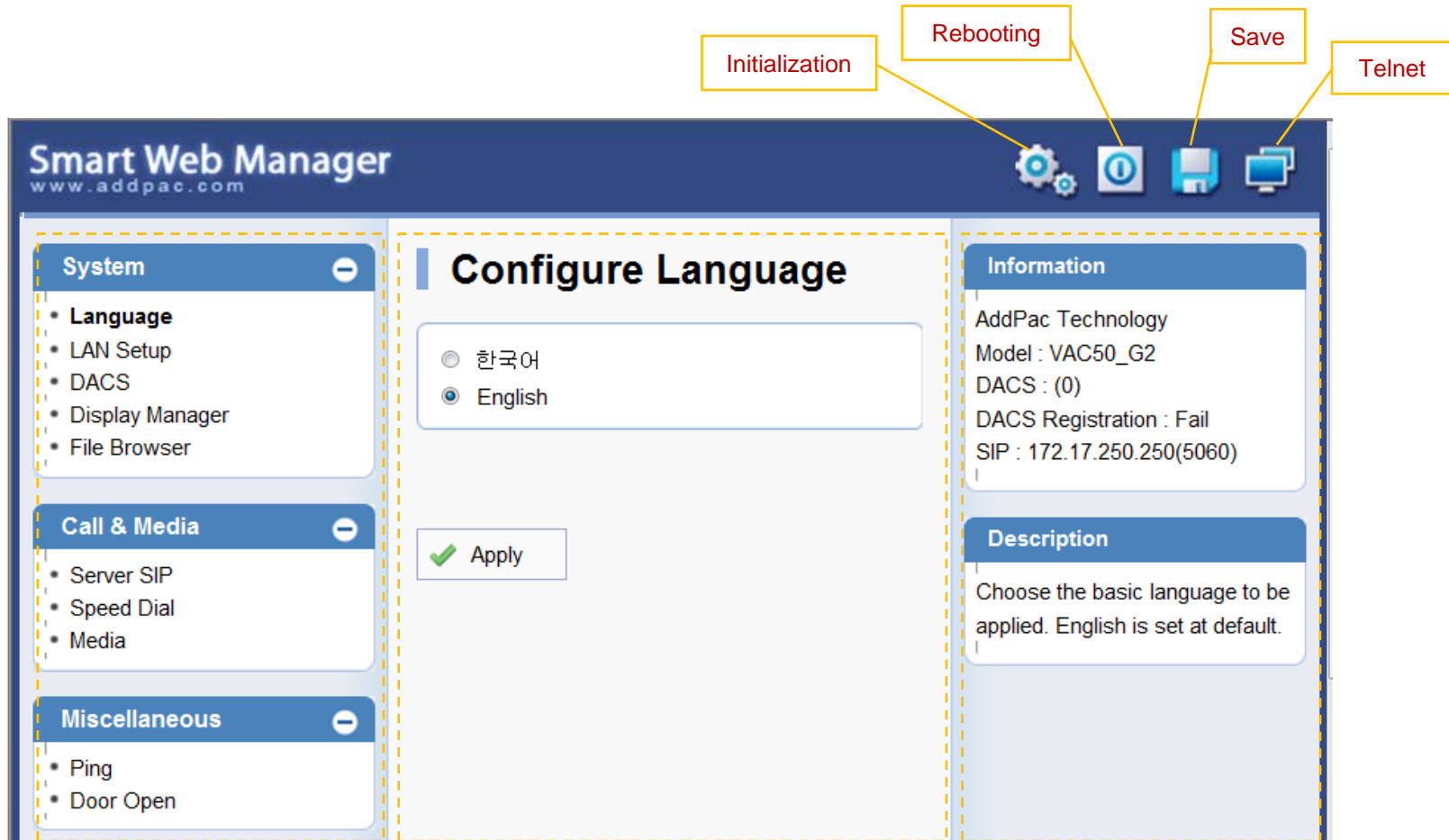
Smart Web Manager

AP-NRC50 Network RFID Controller

- Main Screen
- System
 - Language
 - LAN Setup
 - DACS
 - Display
 - File Browser
- Miscellaneous
 - Door Control and Test
 - Network Test

Smart Web Manager : Main Screen

AP-NRC50 Network RFID Controller



Menu Tree

Output Screen after
Menu Select

System Information and
Help Message

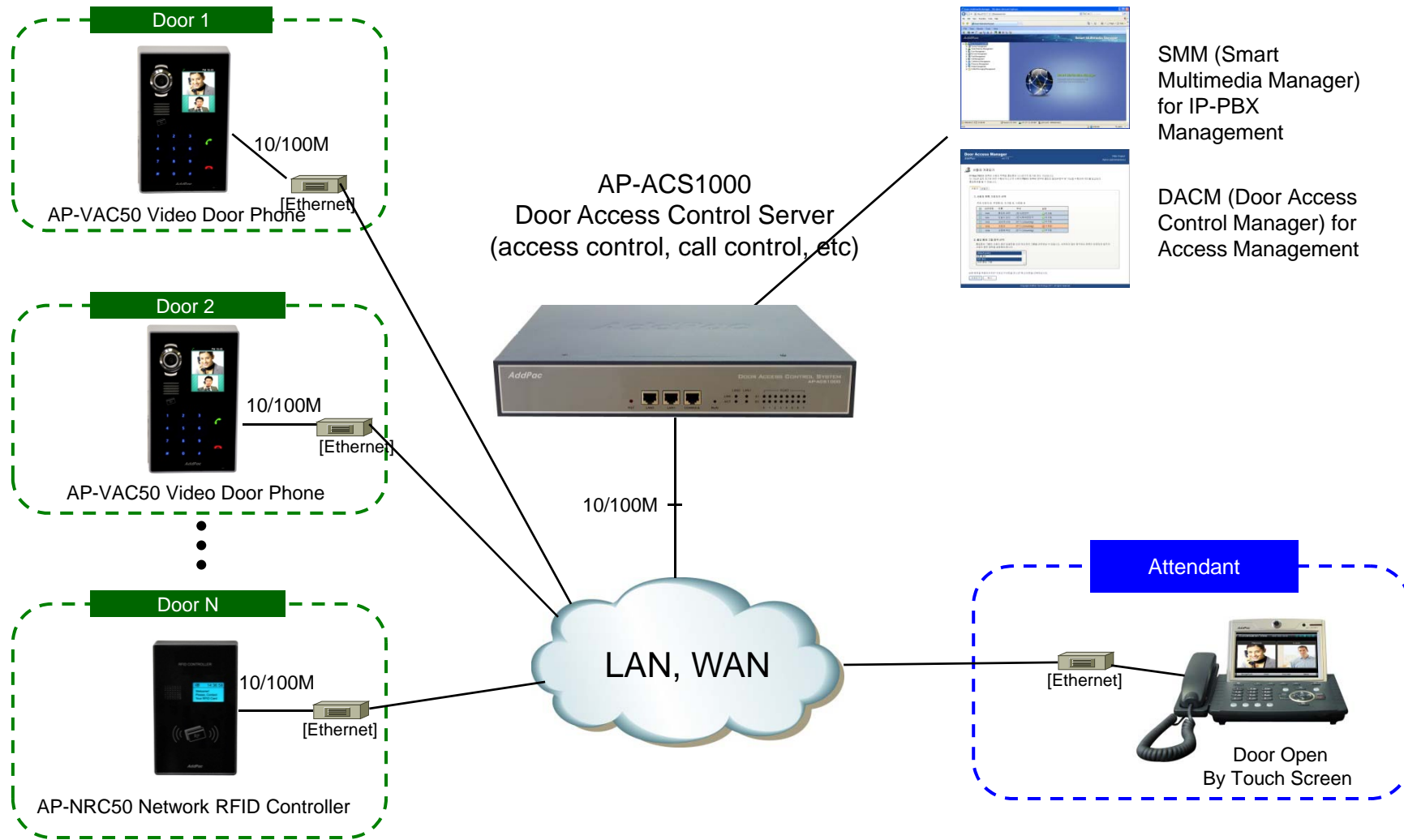
AP-NRC50 Network RFID Controller

Application Area

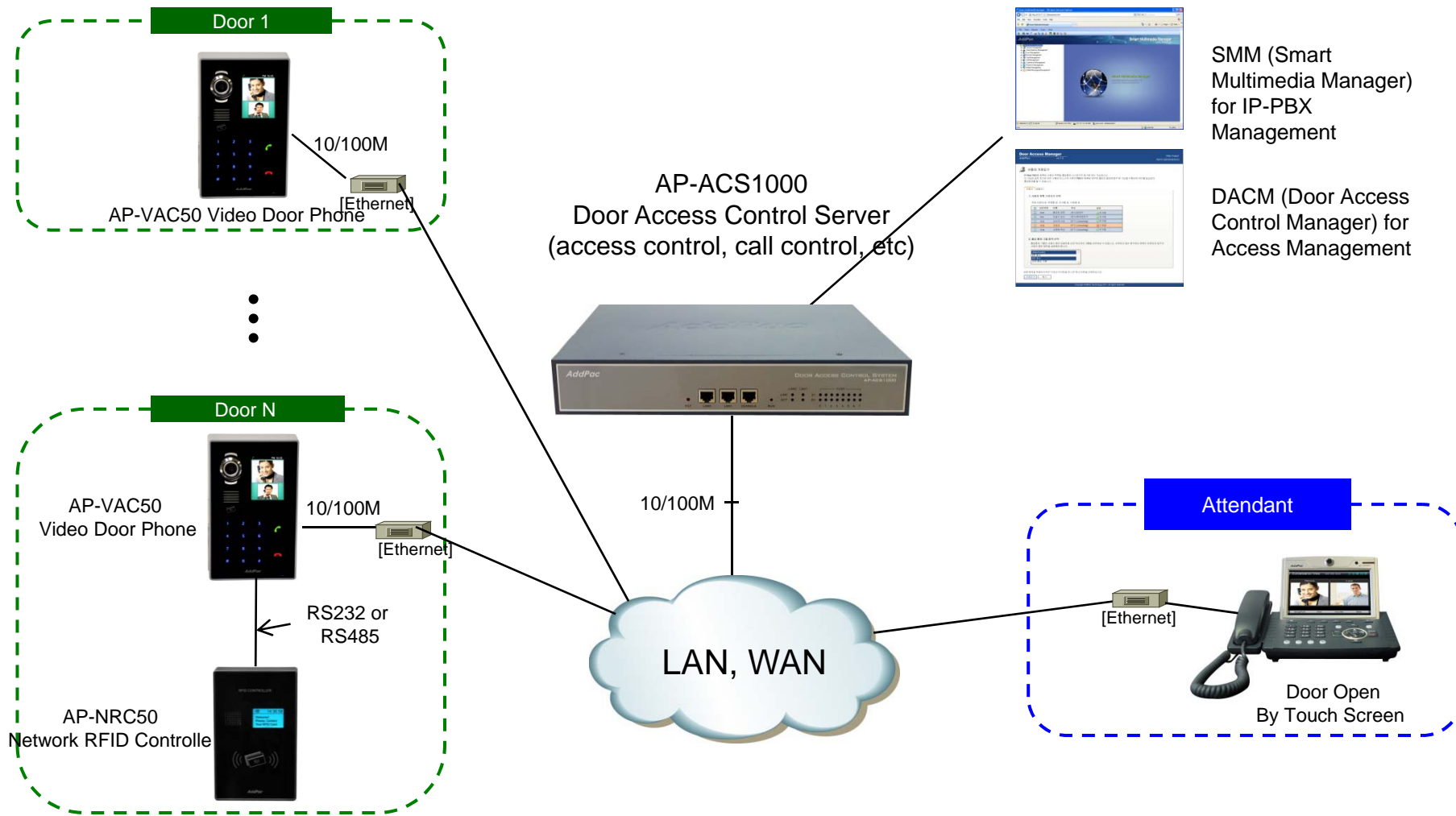
- RFID Stand-alone Mode
- RFID Video Door Phone Clone Mode



Integrated Door Access Control and Call Control (standalone mode)



Integrated Door Access Control and Call Control (clone mode)



Ordering Information

- **AP-NRC50 Network RFID Controller Hardware**
 - AP-NRC50 Network RFID Controller Main Body
 - RISC Microprocessor Programmable Architecture
 - Blue LCD
 - Internal Speaker
 - 1-ports 10/100Mbps Fast Ethernet
 - Including Network Cable Set & Ext. Power Supply, etc.
 - Option : Die-casting Frame Chassis*, PoE Interface
- **Built-in APOS Internetworking Software**
- **Including 1 Year Hardware Warranty**
- **Product Documents**
 - Install and Operation Guide (PDF)
- **Pricing**
 - AddPac Technology Regional Sales Manager
 - Authorized Sales and Marketing Representatives
 - Please Contact www.addpac.com



Thank you!

AddPac Technology Co., Ltd.
Sales and Marketing

Phone +82.2.568.3848 (KOREA)

FAX +82.2.568.3847 (KOREA)

E-mail sales@addpac.com