



AP-VP280DM IP Video Phone

High Performance Next Generation IP Video Terminal Solution



Preliminary Product Overview

AddPac

AddPac Technology

2015, Sales and Marketing

www.addpac.com

High Quality, High Resolution

AP-VP280DM IP Video Phone



AddPac

www.addpac.com

High Quality, High Resolution

AP-VP280DM IP Video Phone



Contents

AP-VP280DM IP Video Phone

- Product Overview
- Benefits and Features
- Hardware Specification
- Multimedia Service
- Software Service
- Video Service & Features
- Audio & Voice Service and Features
- Network Service and Features
- Application Area
- Ordering Information



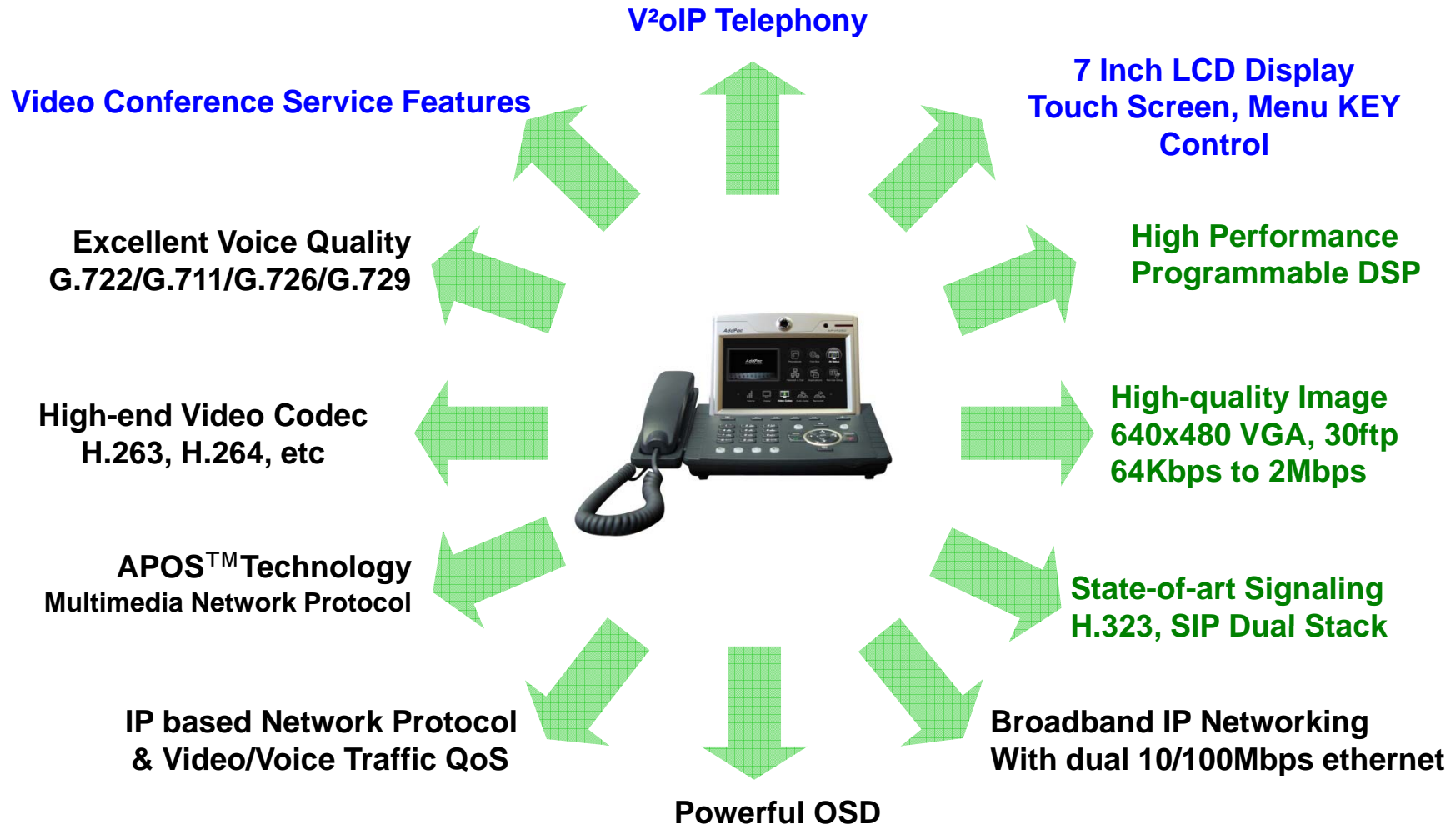
Product Overview

AP-VP280DM IP Video Phone

- IP based Video Phone Solution
- High-Quality Video, Audio, and Voice Service
- High Performance Programmable Video DSP
- Video Telephony and Videoconferencing Service Features
- H.323 and SIP Dual VoIP Signaling Protocols
- H.264/H.263 Video Codec Support
- Various Call Scenario Support
- Call Status Monitoring Support
- Firmware Upgradeable Architecture
- Video Solution with Outstanding Network Service Capability
- Audio/Video Privacy Protection

Product Highlights

AP-VP280DM IP Video Phone



Multimedia Service

AP-VP280DM IP Video Phone



- APOS : AddPac Internetworking Operating System
- OSD : On- Screen Display
- EMS : Element Management System

Benefits and Features

AP-VP280DM IP Video Phone

- **7 Inch LCD Display, Touch Screen**
- **External Video Interface**
 - Composite (RCA) Video In/Out, S-Video Out
 - Audio (RCA) In/Out
- **High-performance Video Codec Support**
 - H.263, MPEG-4, and H.264
- **High-performance Audio Codec Support**
 - G.722(16KHz), G.711,G.729,G.723.1 ,etc
- **Powerful Image Resolution Support**
 - QCIF(176x144), CIF(352x288), QVGA(320x240), and VGA(640x480)
- **Up to 30fps at 1Mbps with VGA-Resolution(H.264)**
- **Video Conference Call Support (AddPac MCU Inter-working)**
- **SIP, H.323 Signaling Support**
- **Rate Control for Video Traffic QoS**
 - Ensuring Optimized Quality, Frame Rate with Limited Bandwidth
- **High-end Error Resilient Against Various Packet Error**

Hardware Specification

AP-VP280DM IP Video Phone

High-end
DSP

- **High-end Programmable DSP Hardware Architecture**
- **Video Input Interface**
 - RCA Video Input
- **Video Output Interface**
 - RCA Video Output, HDMI Video Output(Optional)
- **High quality Audio and Voice Interface**
 - Stereo Audio Input & Output Connector
- **Network Interface**
 - One(1) 10/100Mbps Fast Ethernet
 - One(1) RS-232C Console
 - One(1) USB Interface
- **PSTN Interface**
 - One(1) FXO(RJ11) interface (Option)
- **Power Supply**
 - External Power Adaptor
 - PoE (Power over Ethernet) : Option



Hardware Specification

AP-VP280DM IP Video Phone

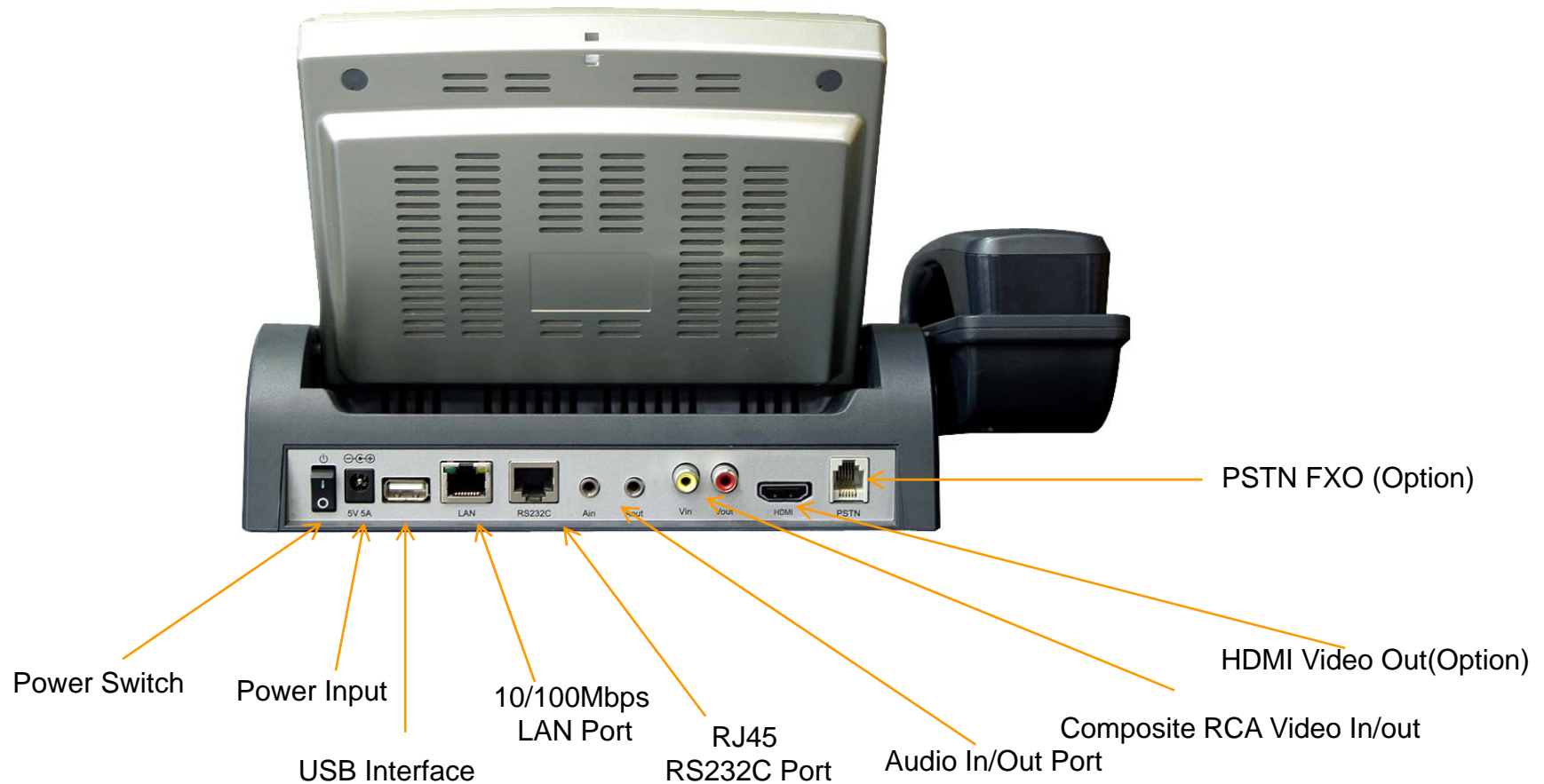
High-end
DSP



Hardware Specification

AP-VP280DM IP Video Phone

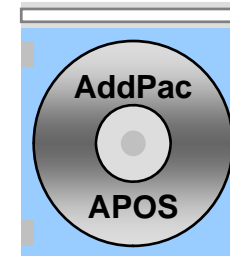
High-end
DSP



Software Service

AP-VP280DM IP Video Phone

- **Built-in AddPac APOS Internetworking Software**
 - Scalability, Functionality, and Stability Features
 - Video Traffic QoS Control
- **Programmable Video, Audio, and Voice Services**
 - Video Codes, Audio, and Voice Codec
- **Firmware Upgradeable DSP Architecture**
- **OSD (On-screen Display) Function Support**
- **Industry Standard IP based Network Protocol Features**



Video Service and Features

AP-VP280DM IP Video Phone

- **Various Video Networking Interface**
 - Composite (RCA), HDMI Output(option)
- **High-performance Video Codec Support**
 - H.263, MPEG-4, and H.264
- **Powerful Image Resolution Support**
 - QCIF(176x144), CIF(352x288), QVGA(320x240), and VGA(640x480)
- **Up to 30fps at 1Mbps with VGA-Resolution(H.264)**
- **64Kbps to 2Mbps Operating Video Traffic Bandwidth**
- **Rate Control for Video Traffic QoS**
 - Ensuring Optimized Quality
 - Frame Rate with Limited Bandwidth
- **High-end Error Resilient Against Various Packet Error**

Audio & Voice Service and Features

AP-VP280DM IP Video Phone

- **Audio & Voice Networking Interface**
 - Audio Input/Output Port (2 x 3.5mm Stereo Female Connector)
- **VoIP based Signaling Protocol Support**
 - H.323, SIP Multiple Signaling Protocol Stack
 - H.323 Gateway, Gatekeeper Support
- **High-performance Audio & Voice Codec Support**
 - Line IN/OUT : G.726, G.711 Audio Codec, etc
- **Enhanced QoS Management Features for Voice Traffics**

Network Service and Features

AP-VP280DM Video Phone

- **Basic Routing**
 - Static Routing (IPv4)
 - Static / DHCP / PPPoE
 - VRRP (Virtual Redundancy Routing Protocol)
- **Network Management**
 - SNMPv2/SNMPv3 Support
 - Standard & Enterprise SNMP MIB Support
 - Web Based Management using HTTP/HTTPS
 - Console / Telnet / Rlogin / SSH Interface
- **Security Function**
 - Standard & Extended IP Access List
 - HTTPS / SSH Interface
 - Auto-disconnect Telnet/Console Session
 - Access Control for Local Service (FTP/Telnet/HTTP.)
 - Enable/Disable Network Services
 - Multi-Level User Account Management

Network Service and Features

AP-VP280DM IP Video Phone

- Operation & Management
 - Configuration Backup & Restore for APOS Managements
 - Use Multiple APOS™ and Configuration
 - Auto Upgrade via HTTP/HTTPS
 - Debugging, System Auditing, and Diagnostics Support
 - FTP/TFTP/Telnet/SSH Server and Client
 - HTTP Server
 - Remote logging using Syslog
 - Local System Logging (Local HDD model)
 - RADIUS Authentication / Account
- Other Scalability Features
 - Network time Protocol (NTP) Support
 - Cisco Style Command Line Interface (CLI)
 - DHCP Server & Relay Functions
 - DNS Server

AP-VP280DM IP Video Phone

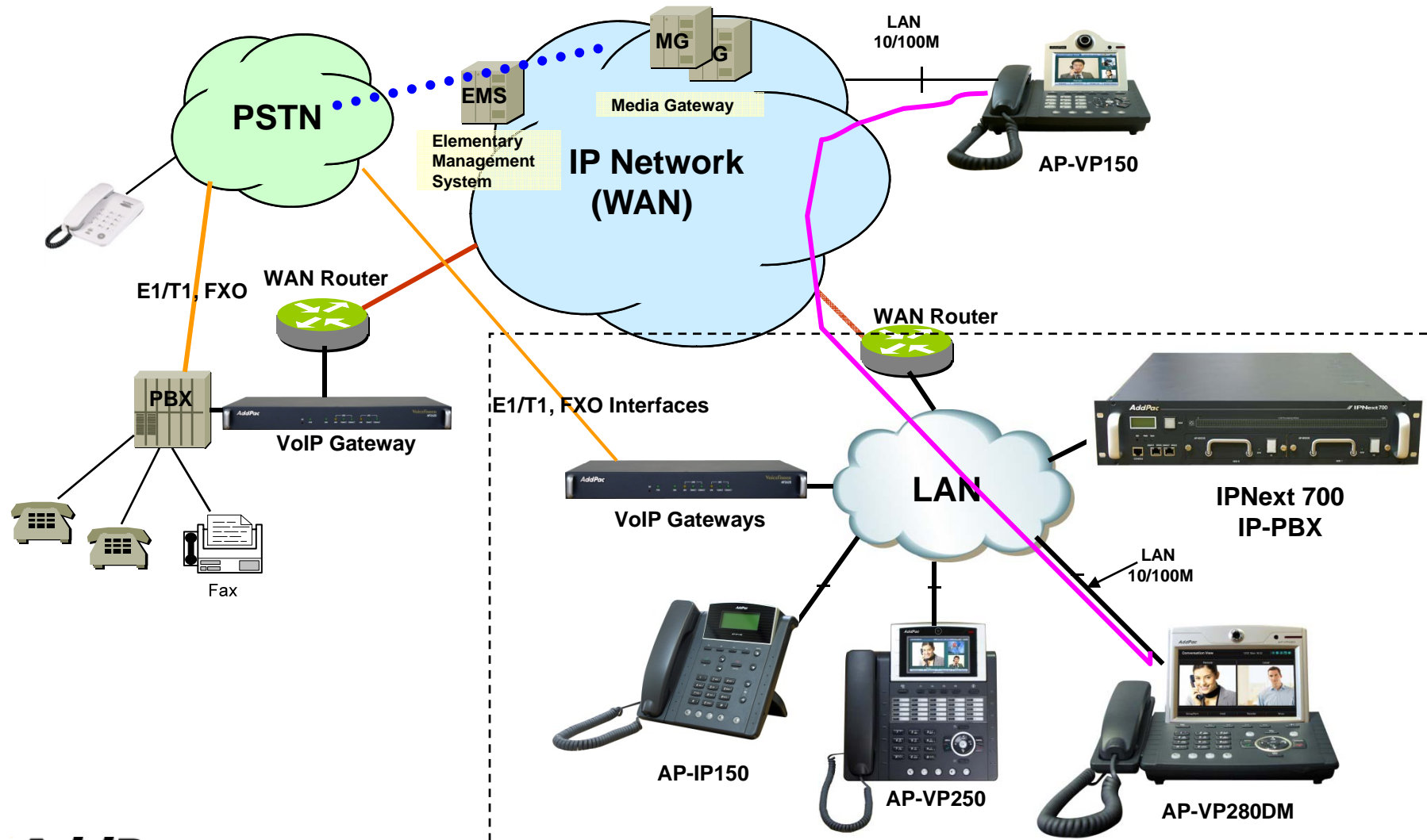
Application Area

- IP-PBX Video Terminal (SIP, H.323, etc)
- Video Telephony
- Video Conference



Standard IP-PBX Application

AP-VP280DM IP Video Phone



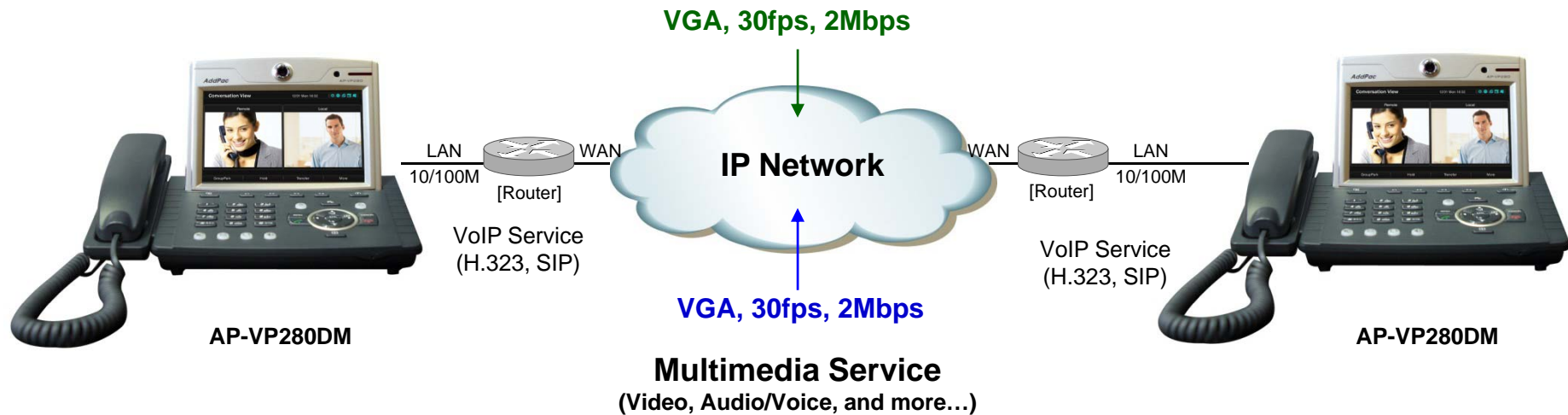
AddPac

www.addpac.com

Video Telephony Application

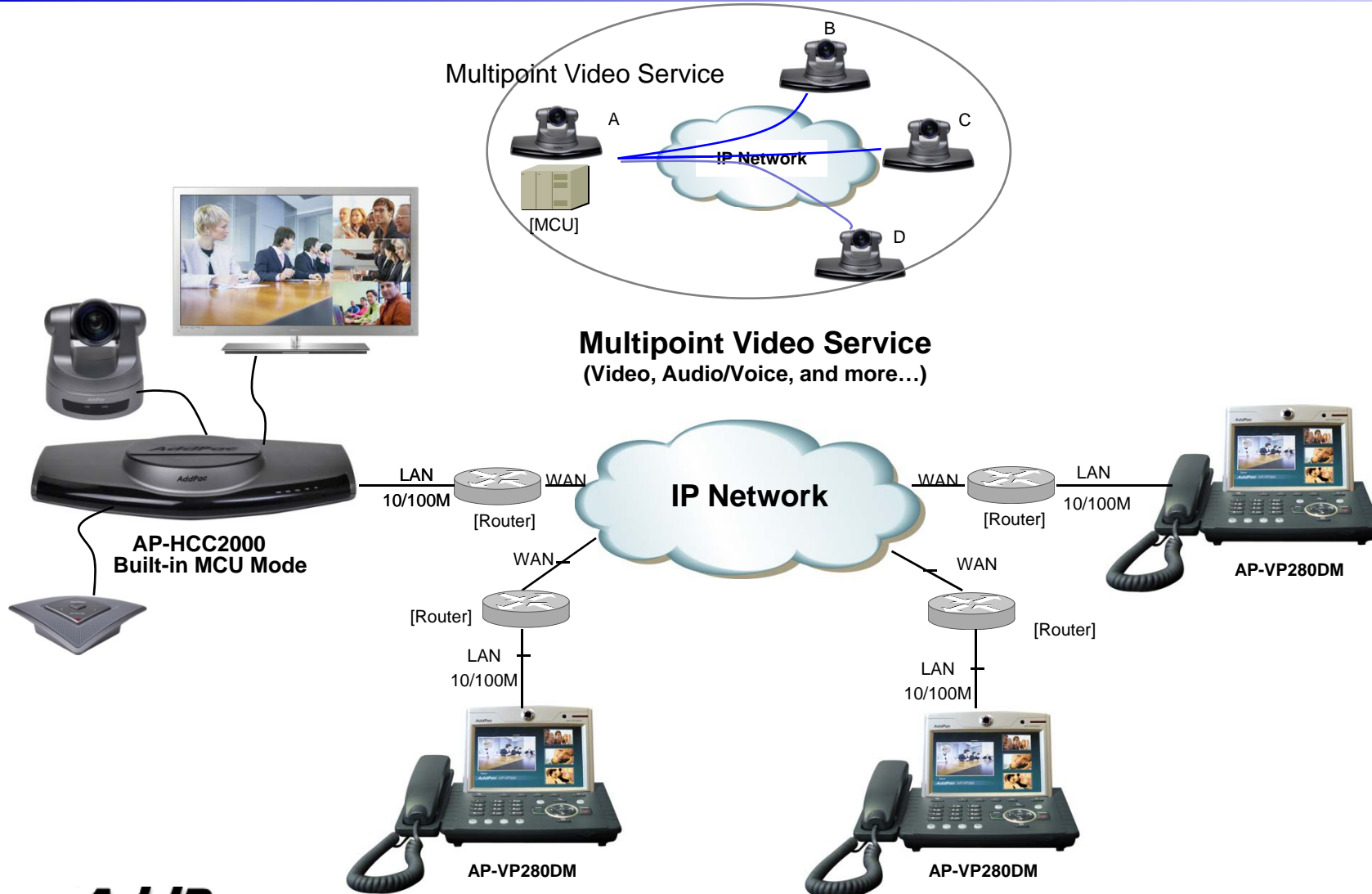
AP-VP280DM IP Video Phone

Point-to-Point Video Service
(symmetric video quality)



Video Conference

AP-VP280DM IP Video Phone



AddPac

www.addpac.com

Ordering Information

- **AP-VP280DM IP Video Phone Hardware**
 - AP-VP280DM IP Video Phone Main Body
 - High-end Programmable DSP Architecture
 - 7 Inch LCD, Built In Camera, Touch Screen
 - External Video RCA Input/Output, and 3.5mm Audio Input/Output, HDMI Video Output (Option)
 - 1-port 10/100Mbps Fast Ethernet and 1-port RS-232C Console
 - 1-port USB Interface
 - 1-Port FXO PSTN Interface (Option)
 - Power over Ethernet (Option)
 - Including Network Cable Set & Ext. Power Supply, etc.
- **Built-in APOS Internetworking Software for AP-VP280DM**
- **Including 1 Year Hardware Warranty**
- **Product Documents**
 - Install and Operation Guide (PDF)
- **Pricing**
 - AddPac Technology Regional Sales Manager
 - Authorized Sales and Marketing Representatives



Thank you!

AddPac Technology Co., Ltd.
Sales and Marketing

Phone +82.2.568.3848 (KOREA)

FAX +82.2.568.3847 (KOREA)

E-mail sales@addpac.com