

AP-VWP100

Smart IP Video Wall PAD

High Performance IP Video Wall PAD Solution

IP Video Wall PAD Solution
Advantage over Analog Solution



AddPac

AddPac Technology

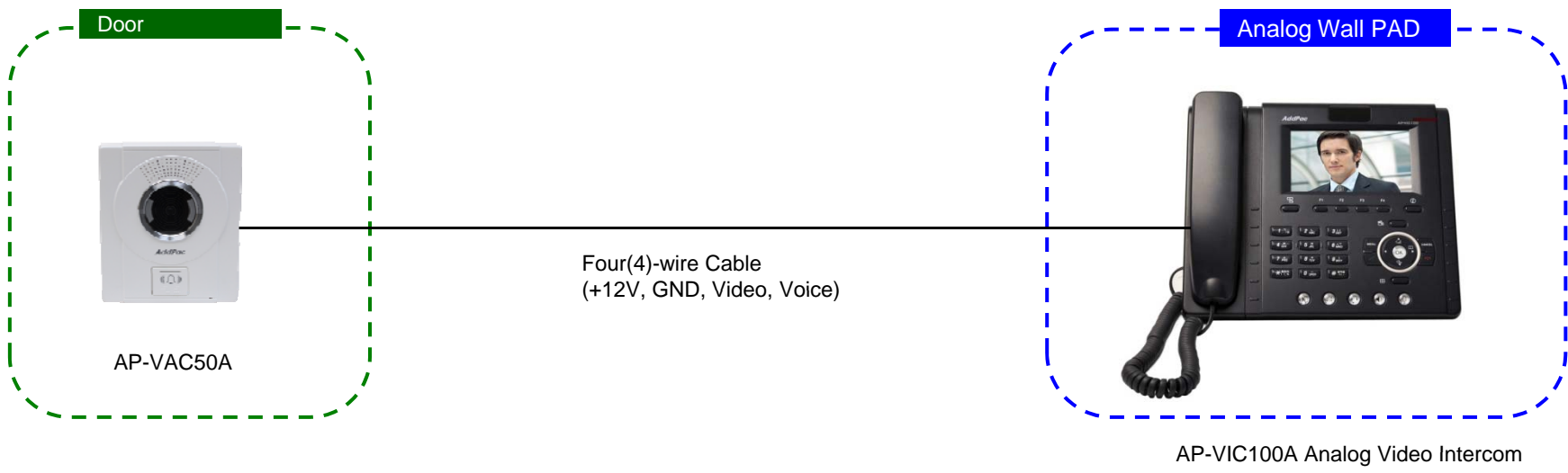
2014, Sales and Marketing

www.addpac.com

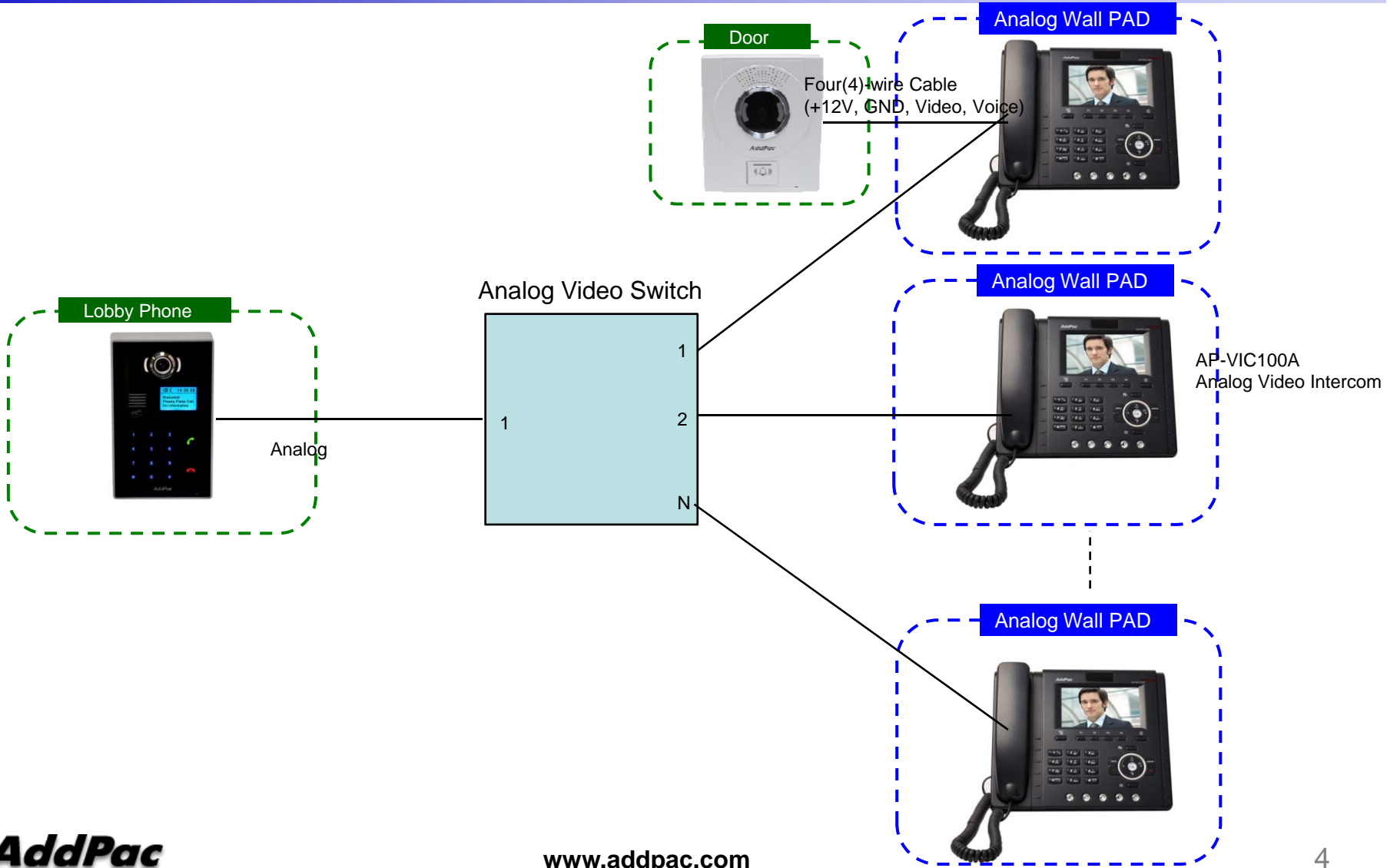
Contents

- Network Diagram Comparison
 - Analog based Scheme
 - IP based Scheme
 - IP based Smart Home Network Diagram
- IP based Video Wall PAD Solution Advantage

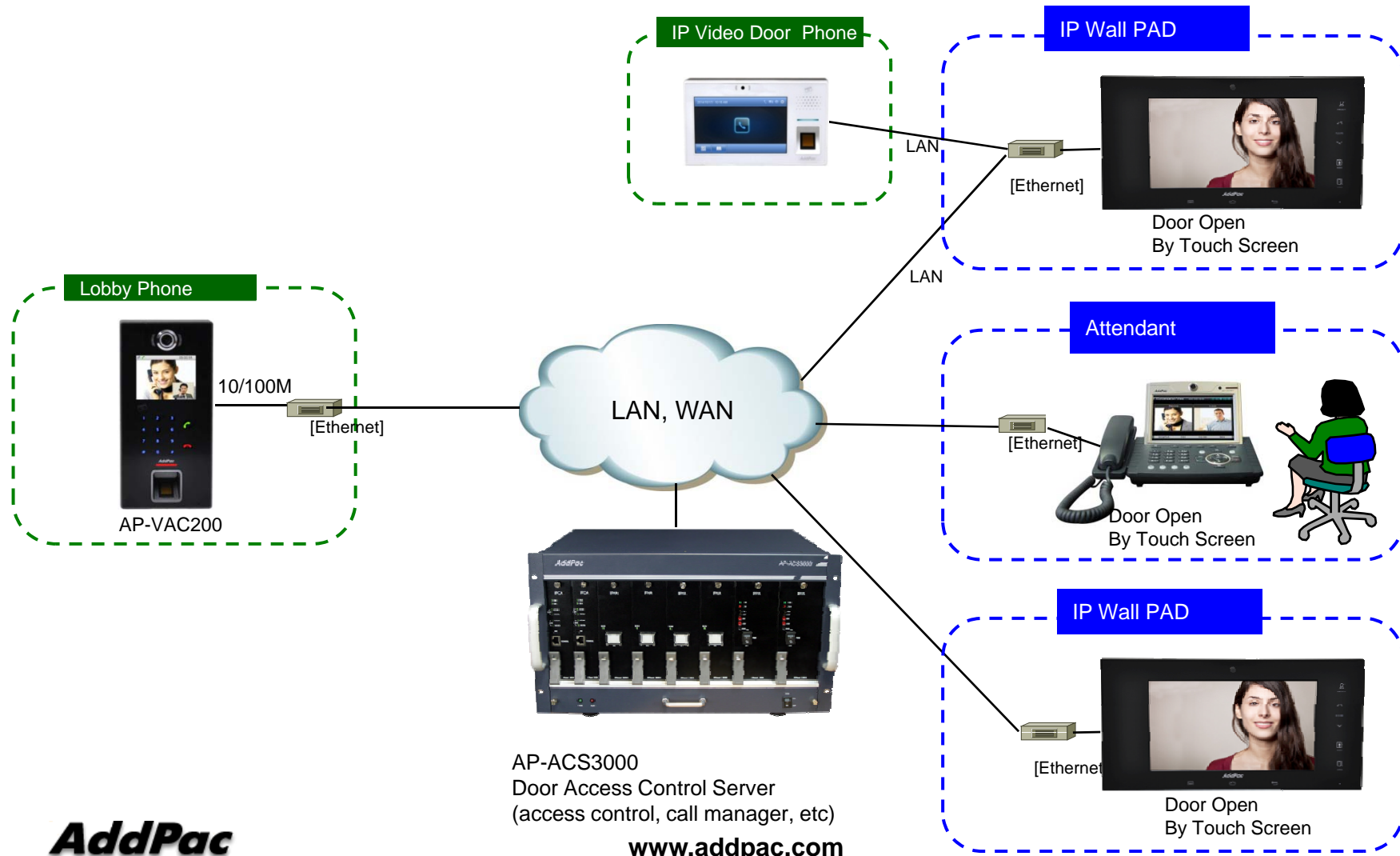
Analog based Solution Network Diagram



Analog based Solution Network Diagram

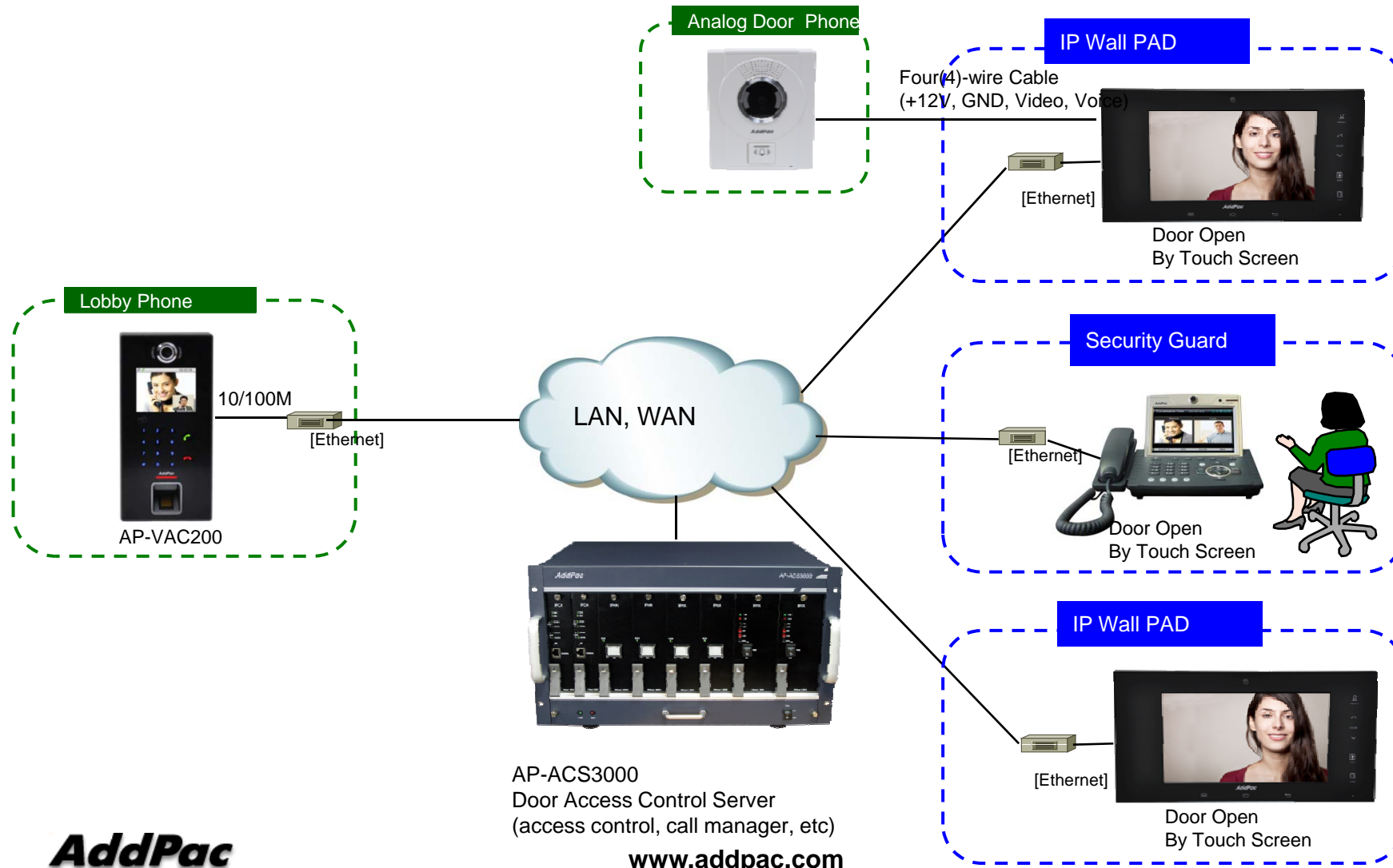


IP based Solution Network Diagram (IP Video Door Phone)

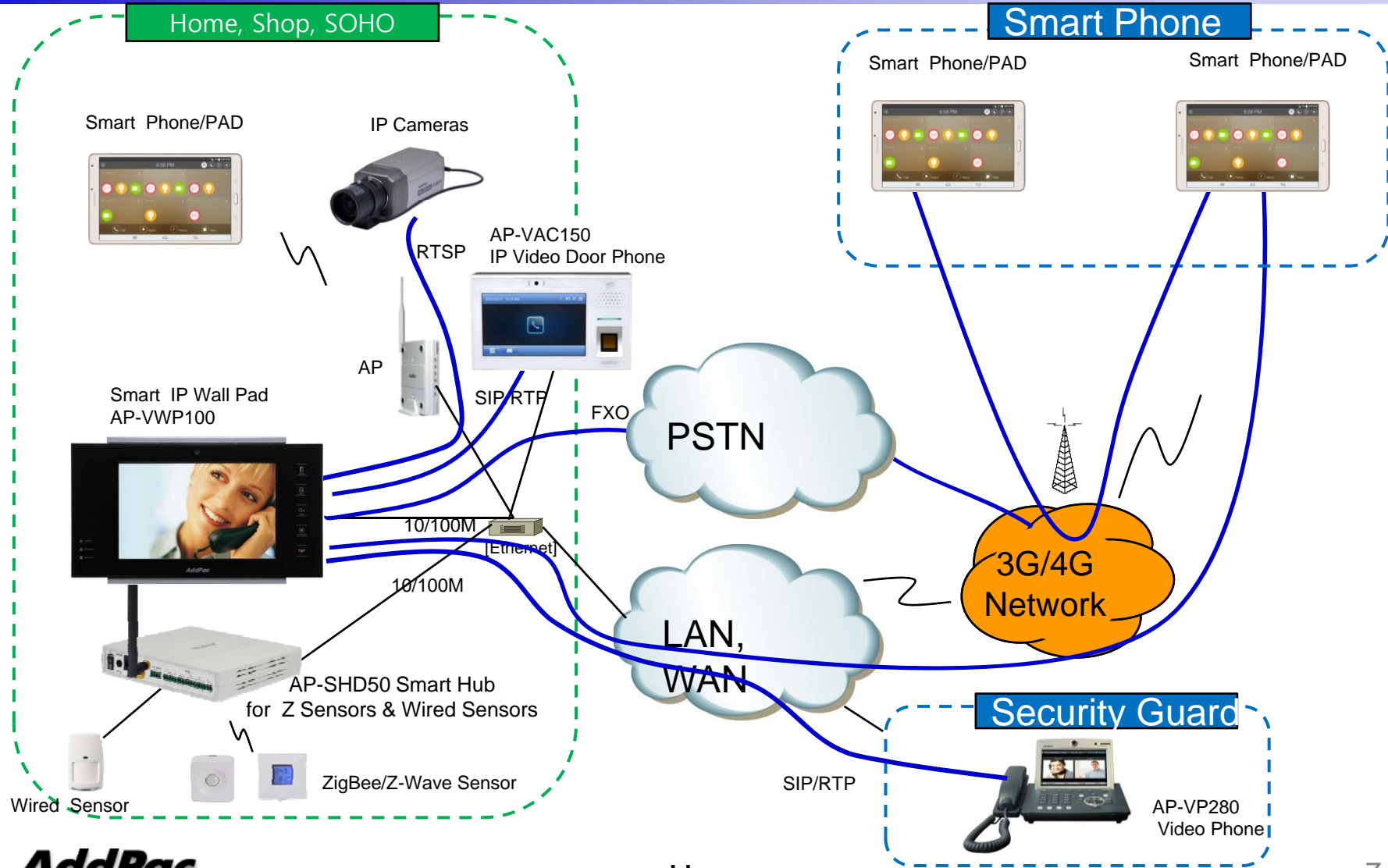


IP based Solution Network Diagram

(Option : Analog Video Door Phone, Cost Effetive)



IP based Smart Home Network Diagram



Advantage over Analog based Scheme

- Cabling is Very Simple and Cost Effective
- No Need Full Mesh Line or N : N Video Switch
- Call Transfer, Call Hunting, etc Various Supplementary Service is Possible
- Various Smart Tablet, Phone Application interworking Software
- RTSP based IP Camera Monitoring Service is Possible
- For home monitoring, IP camera service is possible using optional camera interface
- Remote Video Call Log Monitoring Service
- High Scalability compare with Analog based Scheme
- Fault Tolerant Scheme like as Dual Redundancy is Possible
- Value Added Supplementary Service is Possible
- Interoperable between IP device is very simple and easy if standard protocol/codec is used



Thank you!

AddPac Technology Co., Ltd.
Sales and Marketing

Phone +82.2.568.3848 (KOREA)

FAX +82.2.568.3847 (KOREA)

E-mail sales@addpac.com