



# AddPac VoIP Gateway Series

NTT DID(Direct Inward Dialing) Overview



## **AddPac**

**AddPac Technology**

2011, Sales and Marketing

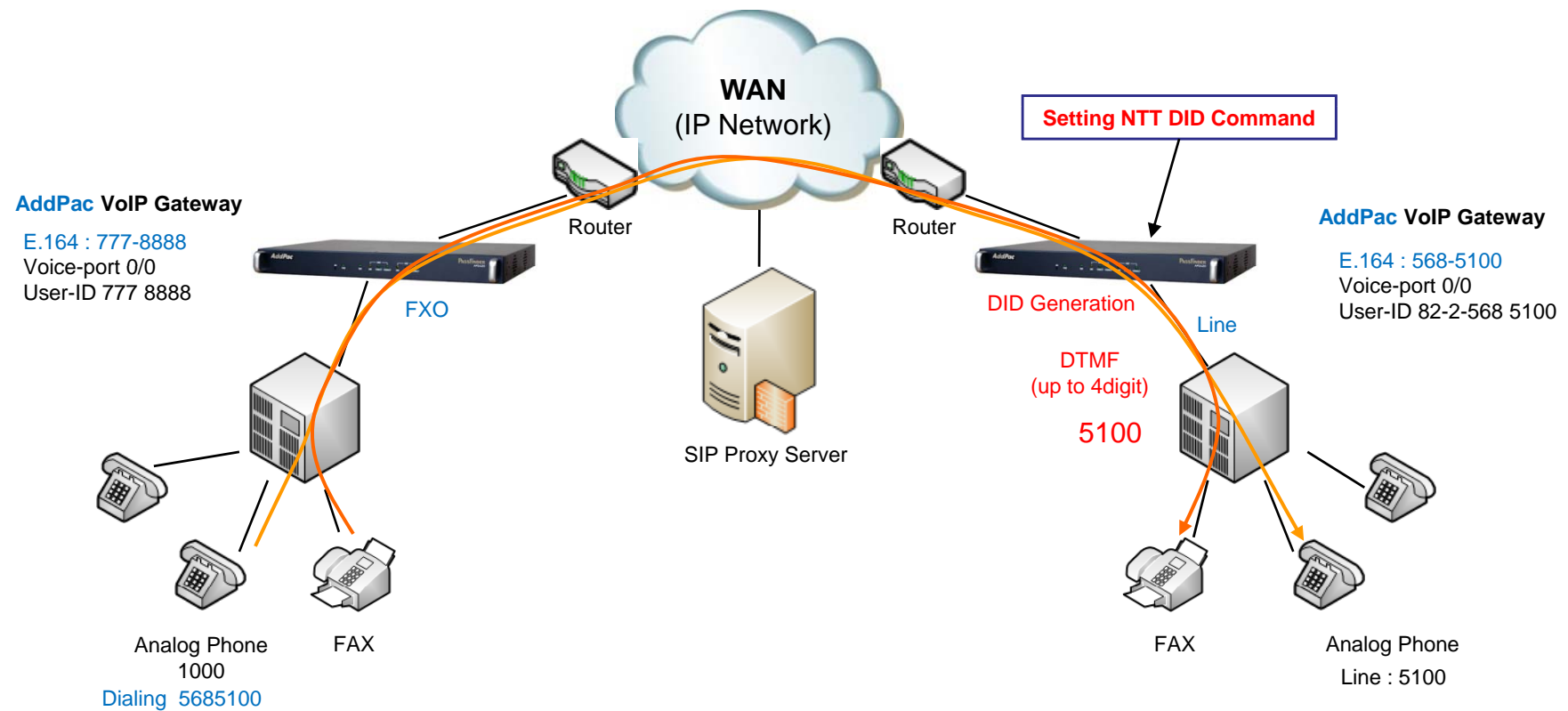
# Contents

- NTT DID Service
- NTT DID Network Diagram (NTT-PB : DTMF)
- NTT DID Network Diagram (NTT-Modem: FSK)
- NTT DID Signaling Flow(SIP)
  - FXS
  - FXO
  - ISDN PRI
- Command Line Interface

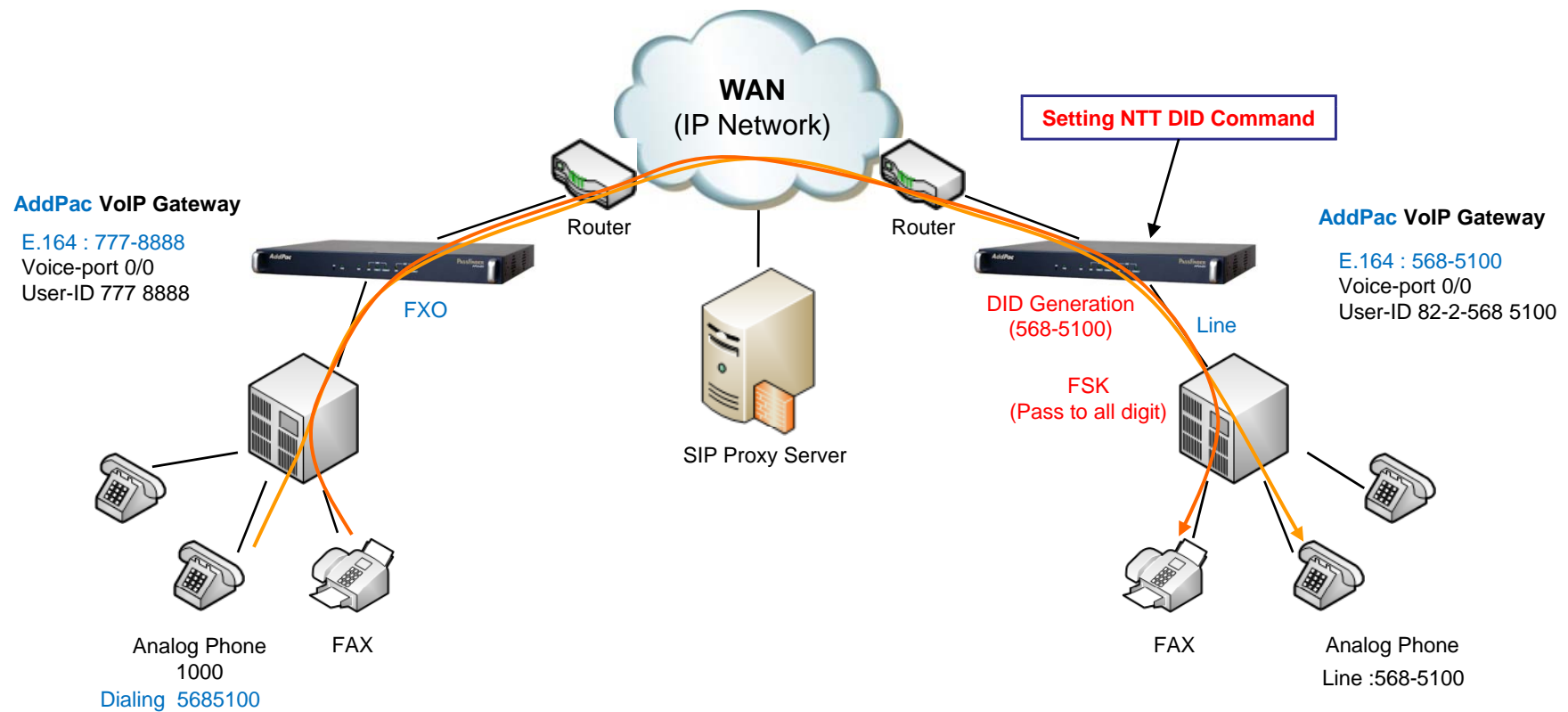
# NTT DID Service

- The VoIP gateway supports DTMF, Modem and PB(Push/Button Dial Signal) types for tone generation.
- It is applied to the FXS/FXO/ISDN-PRI ports.
- DID enables callers to dial directly into an extension on a PBX without having to use an auto attendant.
- The dialed extension number is forwarded to the PBX and the call is connected to the local telephone.
- AddPac's all VoIP products supports the feature and it can be enabled/disabled by configuration.

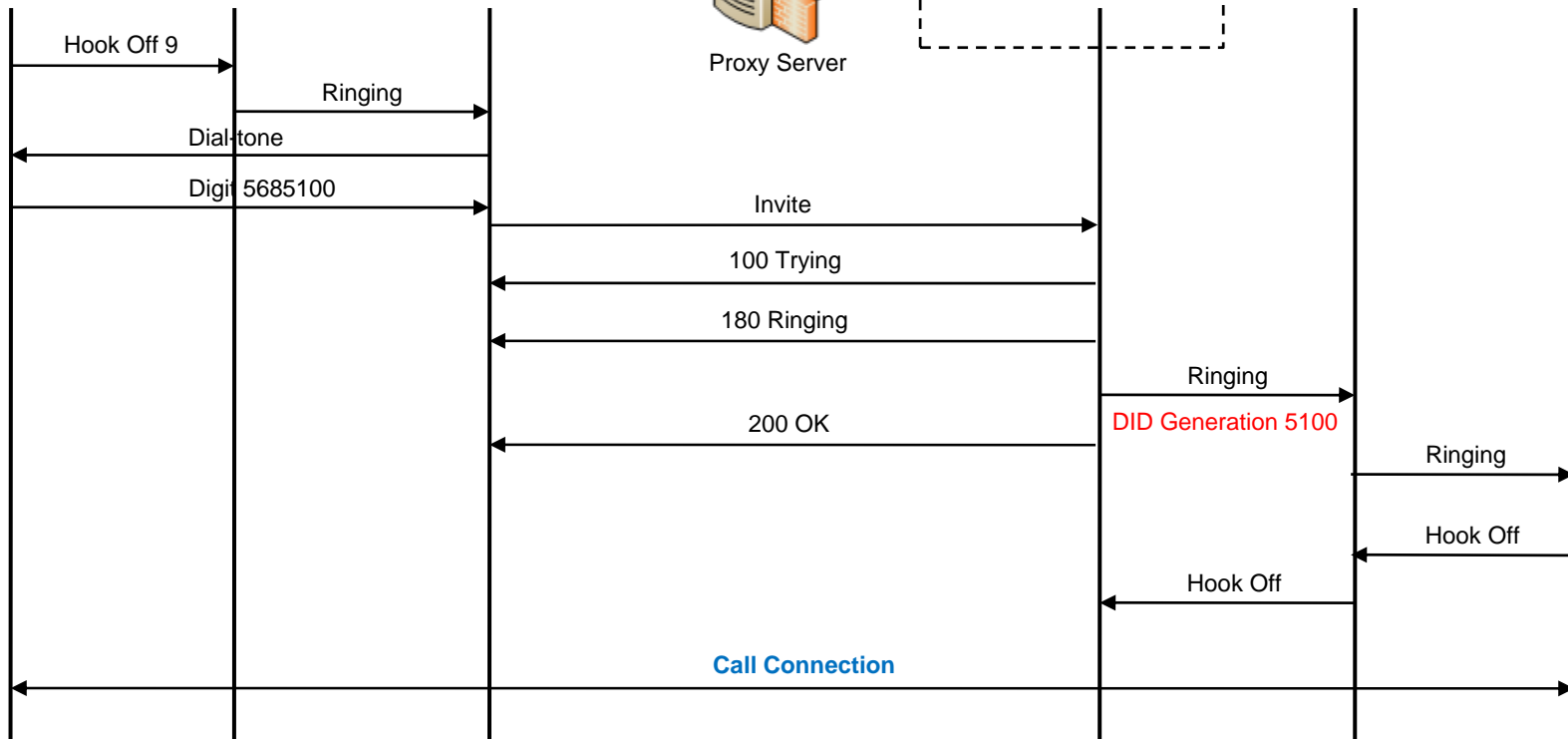
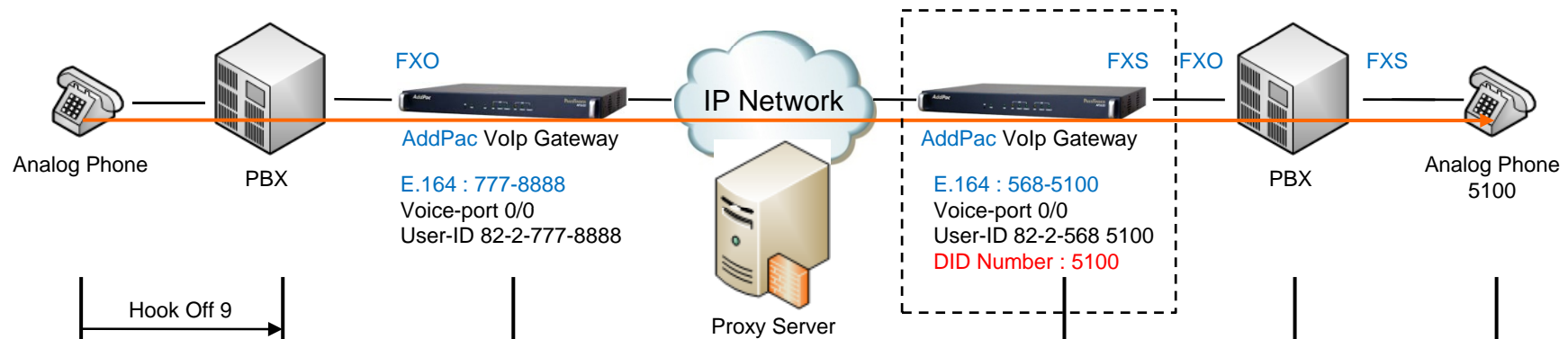
# Network Diagram(NTT-PB : DTMF)



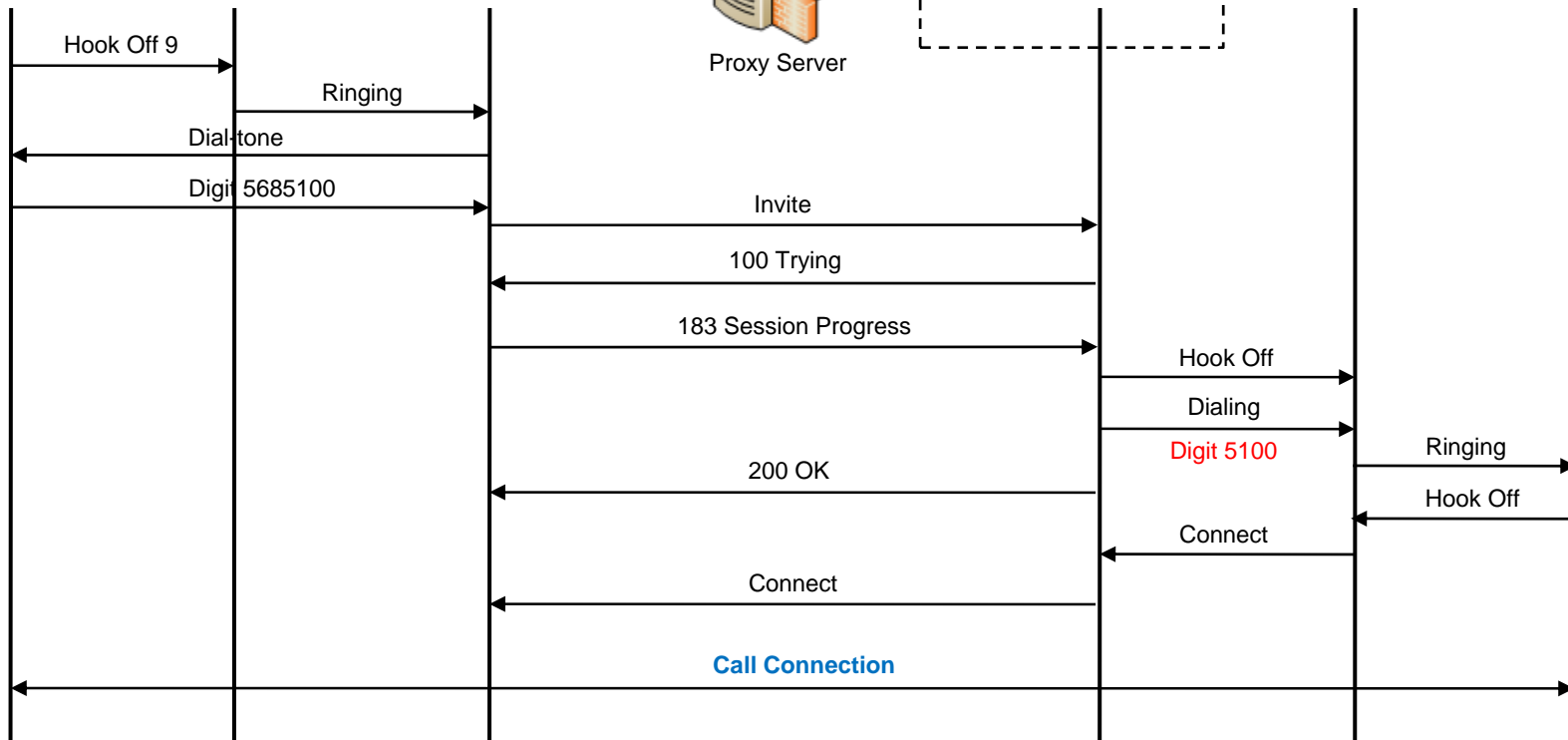
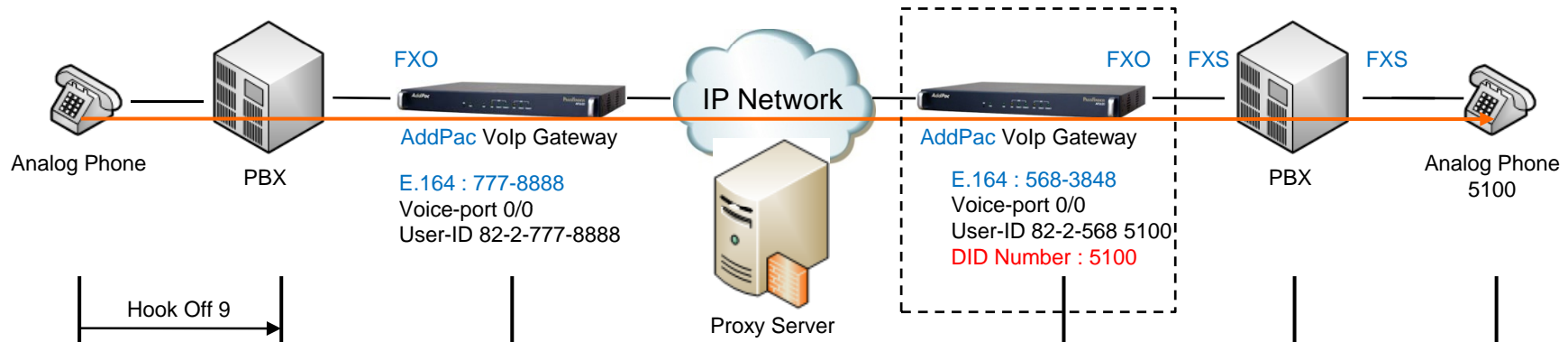
# Network Diagram(NTT-Modem : FSK)



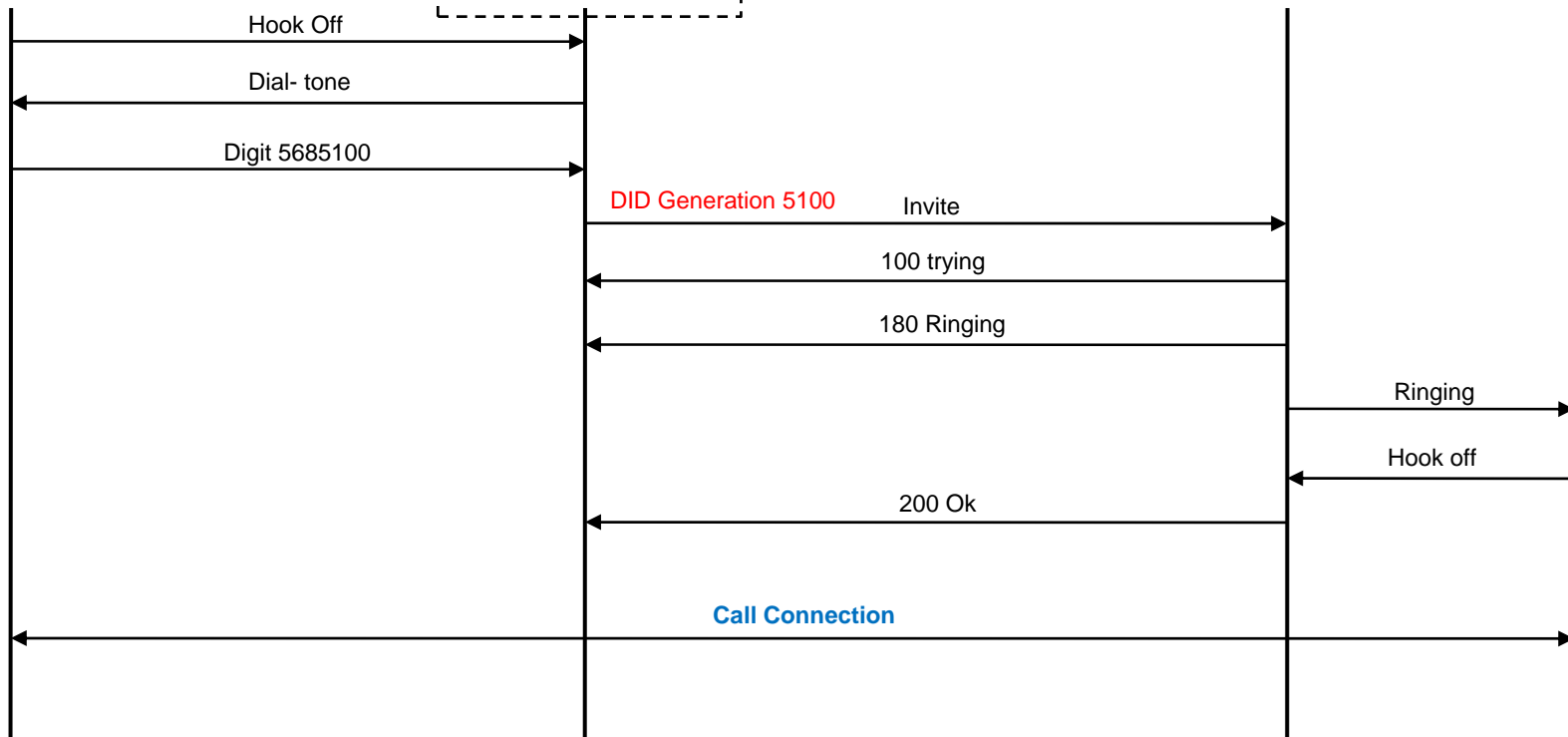
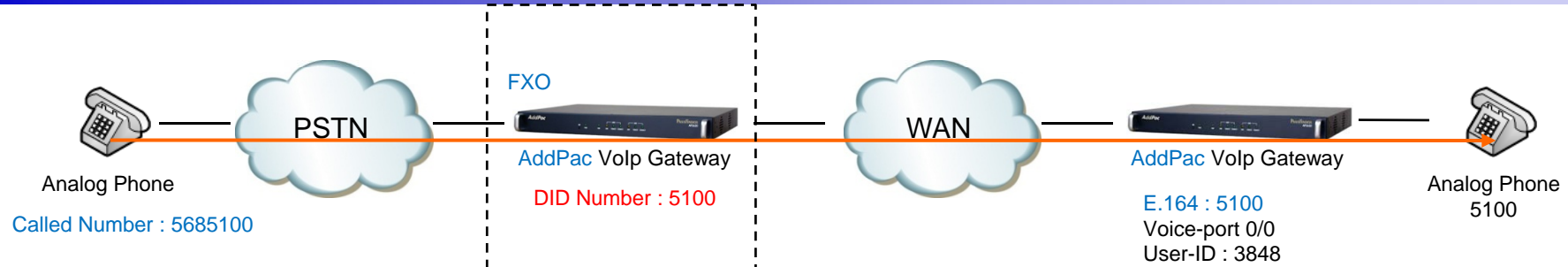
# Signaling Flow - FXS



# Signaling Flow - FXO

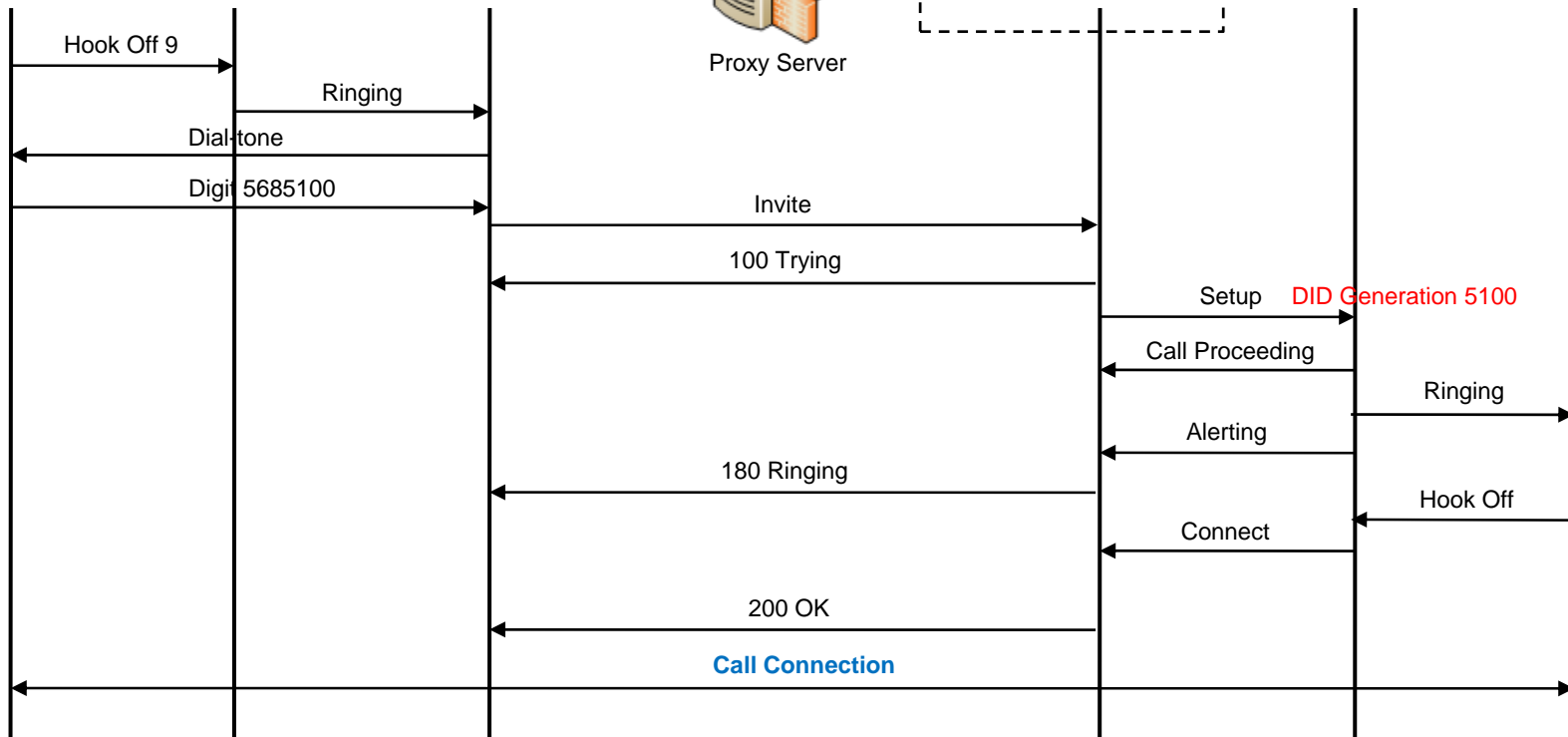
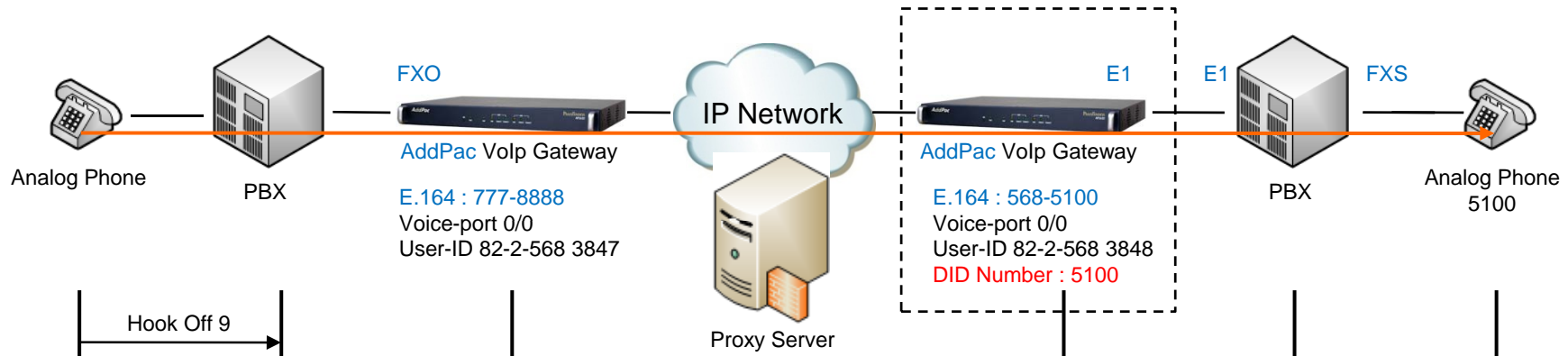


# Signaling Flow - FXO





# Signaling Flow – ISDN PRI



# Command Line Interface

FXS, ISDN DID Configuration Command ( Default : Disable)

1. Normal : DTMF Type Digit Transmission (forward digits after hook off.)
  2. None : Disable DID Feature
  3. NTT-PB : NTT-PB Type Digit Transmission
  4. NTT-Modem : FSK Modem Type
- CID function should be enabled for NTT-Modem DID service plus CID service.
  - CID function is disabled as a default value.

# Command Line Interface

Welcome to AP2620 !

login: root      ← Login

Password:

AP2620 - Login : root at tty/1 on Tue Jan 10 10:33:06 2012

AP2620\_A#

AP2620\_A# configure terminal      ← Global Configuration

Enter configuration commands, one per line. End with CNTL/Z

AP2620\_A(config)# voice-port <slot>/<port>      ← Voice-Port Interface Configuration

AP2620\_A(config-voice-port-0/0)# did { none | normal | ntt-modem | ntt-pb }      ← DID Command

normal      set normal mode (default : forward digits after hook off.)

none      set none forward digit mode

ntt-modem      set NTT modem mode

ntt-pb      set NTT PB mode

AP2620\_A#

# Command Line Interface

- Transmission All Digit

AP2620_A#	
AP2620_A# dial-peer voice 0 pots	← Pots Peer Configuration
AP2620_A# destination-pattern 5683848	← Destination Pattern Configuration Command
AP2620_A# port 0/0	← Port Configuration Command
AP2620_A# forward-digit from 0	← Digit Transmit from 0 th Digit Position
AP2620_A#	

- Transmission Part of Digit – forward digit from

AP2620_A#	
AP2620_A# dial-peer voice 0 pots	← Pots Peer Configuration
AP2620_A# destination-pattern 5683848	← Destination Pattern Configuration Command
AP2620_A# port 0/0	← Port Configuration Command
AP2620_A# forward-digit from 4	← Digit Transmit from 4 th Digit Position(3848)
AP2620_A#	

# Command Line Interface

- Transmission Part of Digit– forward digit last

```
AP2620_A#  
AP2620_A# dial-peer voice 0 pots ← Pots Peer Configuration  
AP2620_A# destination-pattern 5683848 ← Destination Pattern Configuration Command  
AP2620_A# port 0/0 ← Port Configuration Command  
AP2620_A# forward-digit last 4 ← Digit Transmit from last 4 digit position  
AP2620_A#
```

- Transmission Part of Digit - Prefix

```
AP2620_A#  
AP2620_A# dial-peer voice 0 pots ← Pots Peer Configuration  
AP2620_A# destination-pattern 5683848 ← Destination Pattern Configuration Command  
AP2620_A# port 0/0 ← Port Configuration Command  
AP2620_A# Prefix 2000 ← Transmit Digit 2000 to PBX  
AP2620_A#
```



# Thank you!

**AddPac Technology Co., Ltd.**  
Sales and Marketing

Phone +82.2.568.3848 (KOREA)

FAX +82.2.568.3847 (KOREA)

E-mail [sales@addpac.com](mailto:sales@addpac.com)