



AP-GSS1800 256Ch GSM SIM Server (Front SIM Type)

High Performance GSM SIM Server Solution

Preliminary Product Overview

(Without notice, following described technical spec. can be changed)



AddPac

AddPac Technology

2013, Sales and Marketing

www.addpac.com

Contents

- Product Overview
- Hardware Specification
- SIM Bank Module Specification
- SIM Server Stacking Architecture
- APOS Technology
- Network Protocols
- Network Management
- Security Management
- Application Service
- Ordering Information



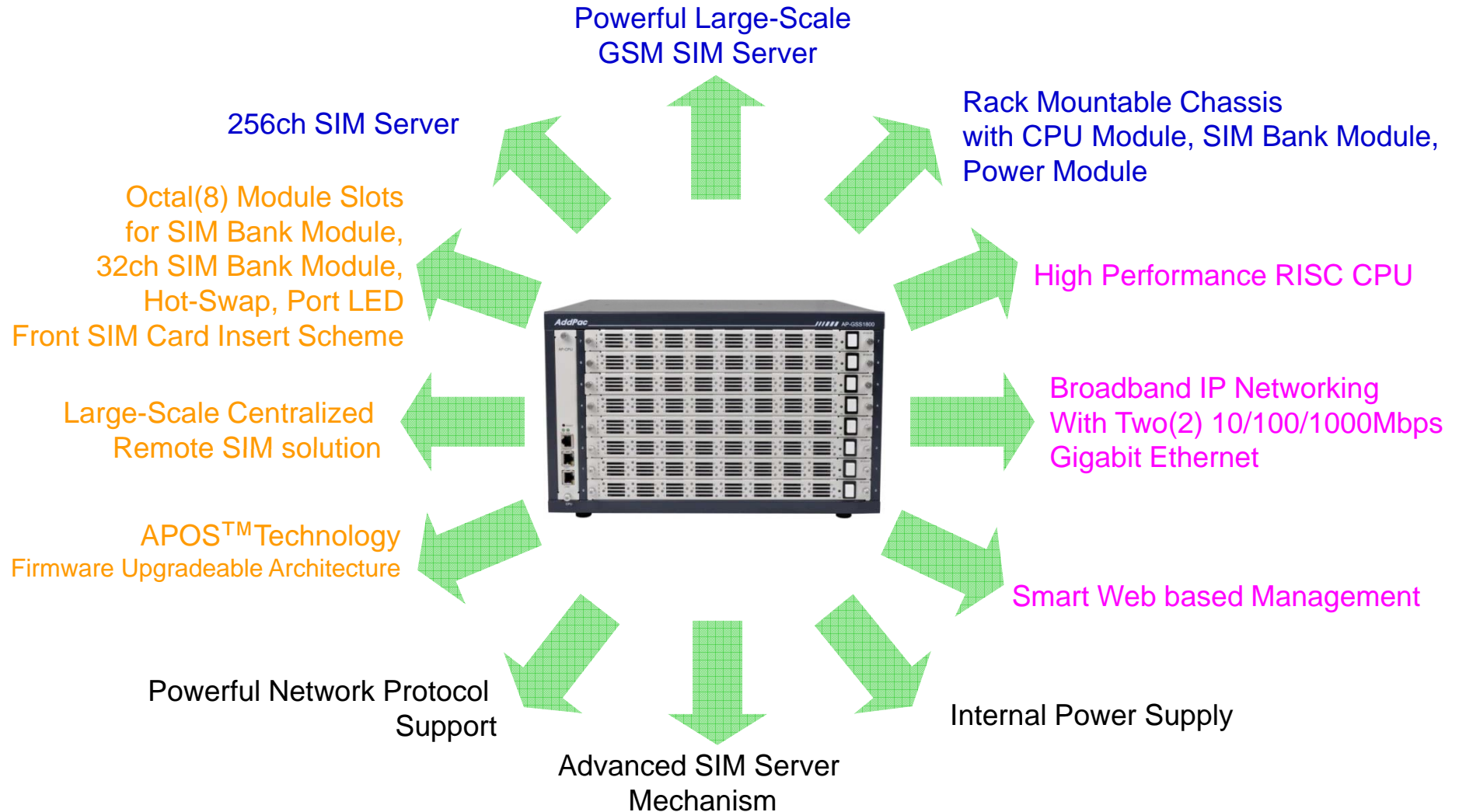
Product Overview

AP-GSS1800 256ch GSM SIM Server

- Octal(8) Module Slots for 32ch SIM Bank Module
(Up to 32x8=256ch SIM Slot, CPU Module)
 - Front SIM Card Insert Scheme
- High Performance RISC Microprocessor Architecture
- Remote SIM solution for Centralized Management
- SIM Server Stacking Service Support
- Hot-Swap Service for SIM Bank Module
- Powerful Real-time Response Service using Embedded RTOS
- Powerful Network Protocols (PPPoE, DHCP, Static Routing, etc)
- Two(2)10/100/1000Mbps Gigabit Ethernet
- One(1) RS-232C Port for Command Line Interface
- Firmware Upgradeable Architecture
- Smart Web Manager for SIM Server
- Internal Power Supply

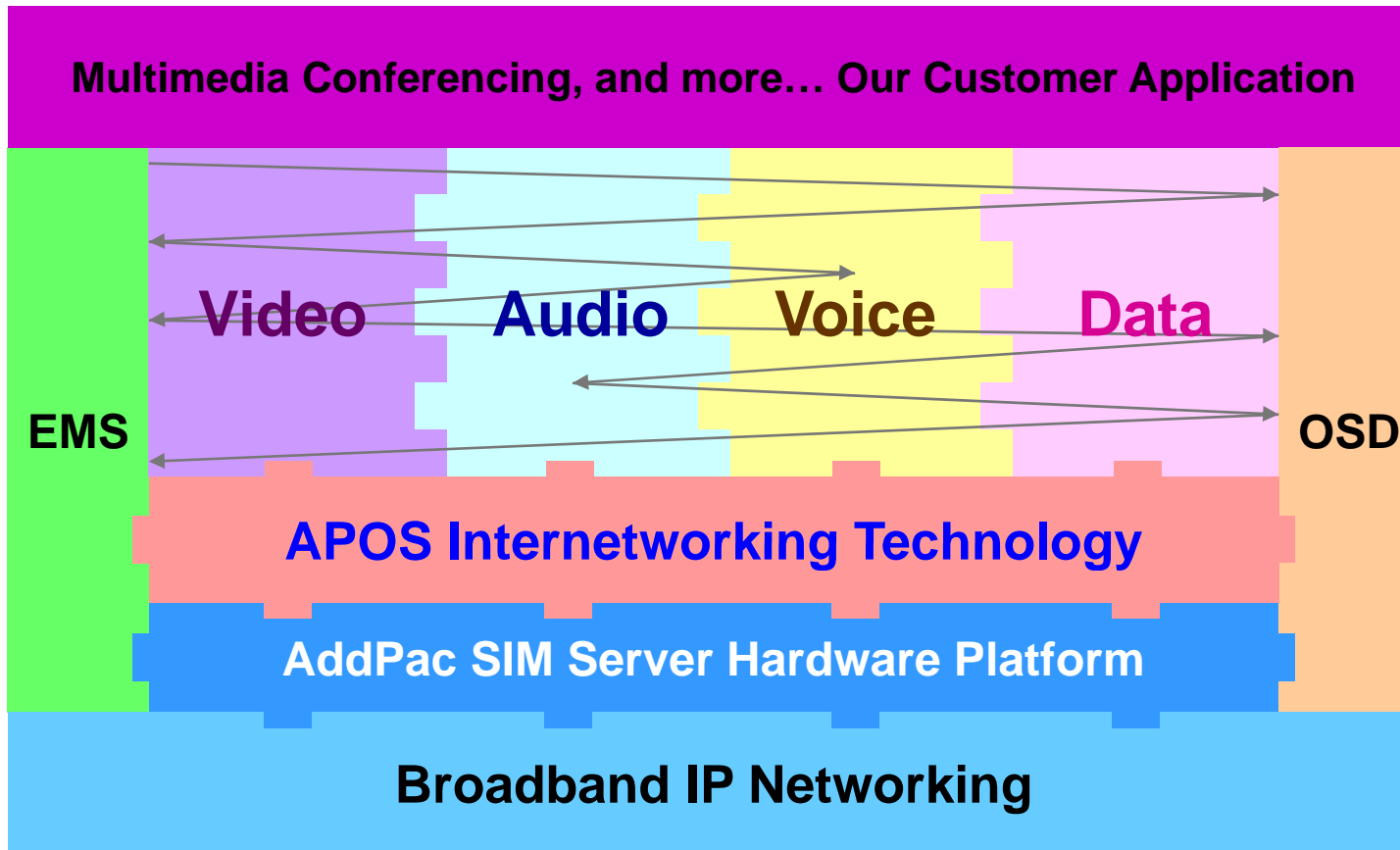
Product Highlights

AP-GSS1800 256ch GSM SIM Server



APOS Technology

AP-GSS1800 256ch GSM SIM Server



- APOS : AddPac Internetworking Operating System
- OSD : On- Screen Display
- EMS : Element Management System

Hardware Specification

AP-GSS1800 256ch GSM SIM Server

RISC
CPU

- RISC Microprocessor Computing Power
- High Performance CPU Module
- Octal(8) SIM Bank Module Slots
- 32ch GSM SIM Slot Module(AP-GSC32F)
 - 32ch SIM Card Slot
 - SIM Slot Status Port LED
 - Hot-Swap Button
 - Front SIM card insert scheme
- Network Interface
 - Two(2) 10/100/1000Mbps Gigabit Ethernet (RJ45)
- RS232C Console Interface for CLI
- Run LED, LAN LED, Port LEDs
- Internal Power Supply



Hardware Specification

AP-GSS1800 256ch GSM SIM Server

RISC
CPU

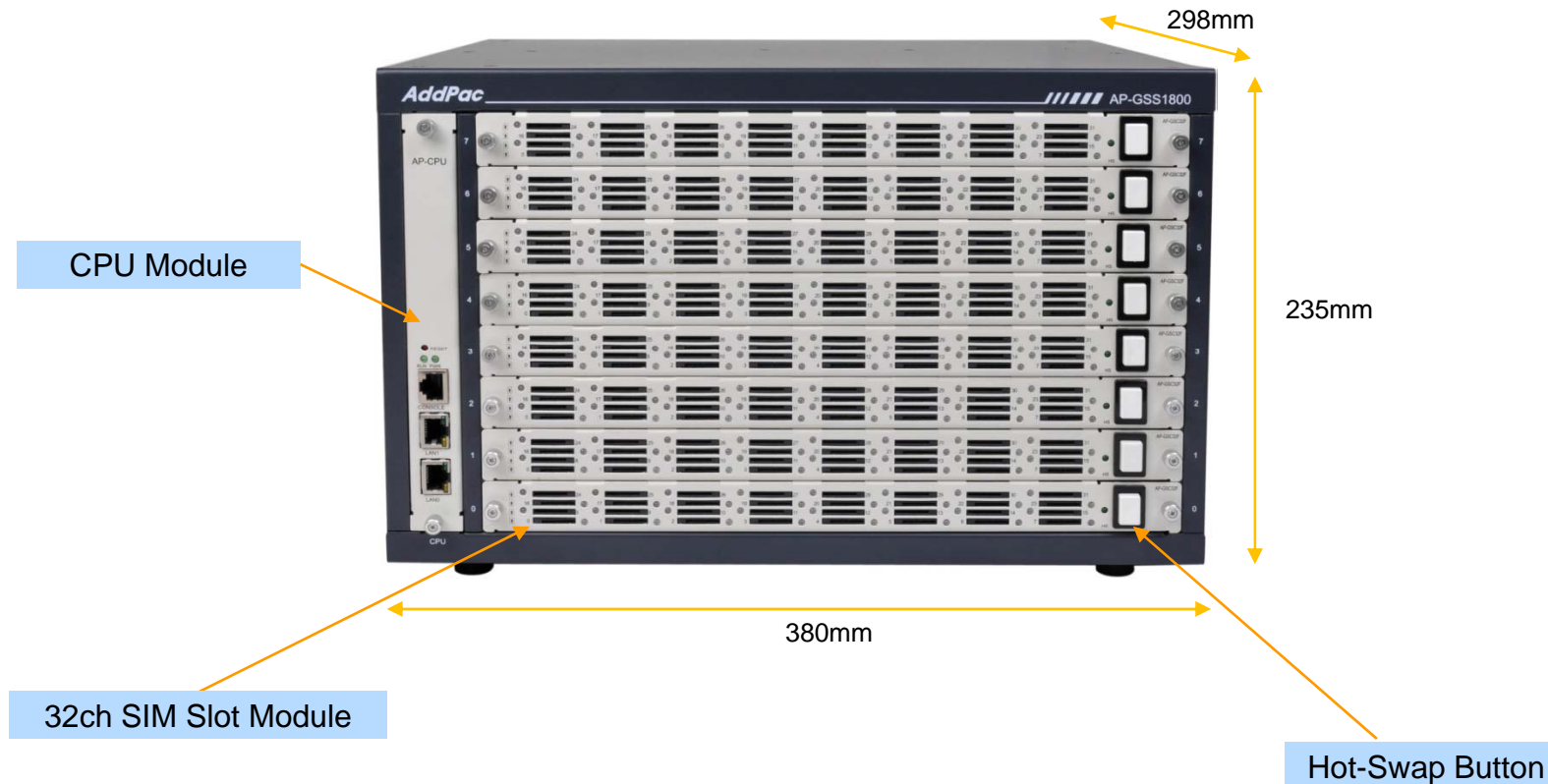
AP-GSS1800 GSM SIM Server	Basic Specifications
Voice Interface	Octal(8) Module Slots excluding CPU Module
	AP-GSC32F : 32channel GSM SIM Slot Module, Hot-Swap, Port Status LED
Ethernet Interface	2-Ports 10/100/1000Mbps Gigabit Ethernet Interface(RJ-45)
Flash Memory	512Mbyte NAND Flash Memory
Base Memory	128Mbyte High-speed DDR2
Power Requirement	Power Supply / VAC 110~220V, 50/60Hz, 5V 30A, Internal Power Supply
Operating Temperature	0°C ~ 45°C (32 °F ~ 122°F)
Storage Temperature	-40°C ~ 85°C (-40°C ~ 185°F)
Relative Humidity	5% ~ 95% (Non-condensing)
Dimensions	H x W x D (235mm x 380mm x 298mm)
Weight(kg)	9.0 Kg

Hardware Specification

AP-GSS1800 256ch GSM SIM Server

RISC
CPU

Front Side View

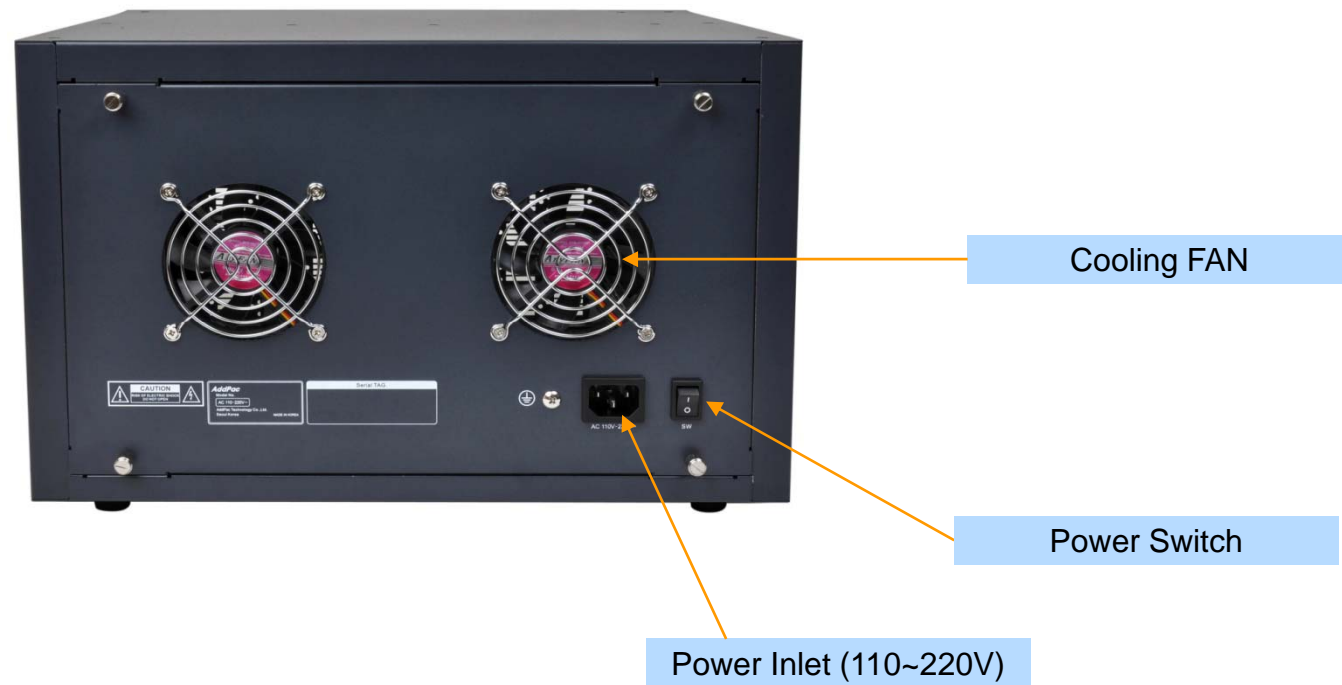


Hardware Specification

AP-GSS1800 256ch GSM SIM Server

RISC
CPU

Back Side View



Hardware Specification

AP-GSS1800 256ch GSM SIM Server

SIM Bank Module

AP-GSC32F 32ch GSM SIM Slot Module



SIM Card Slot

SIM Status LED :
Dual Color LED

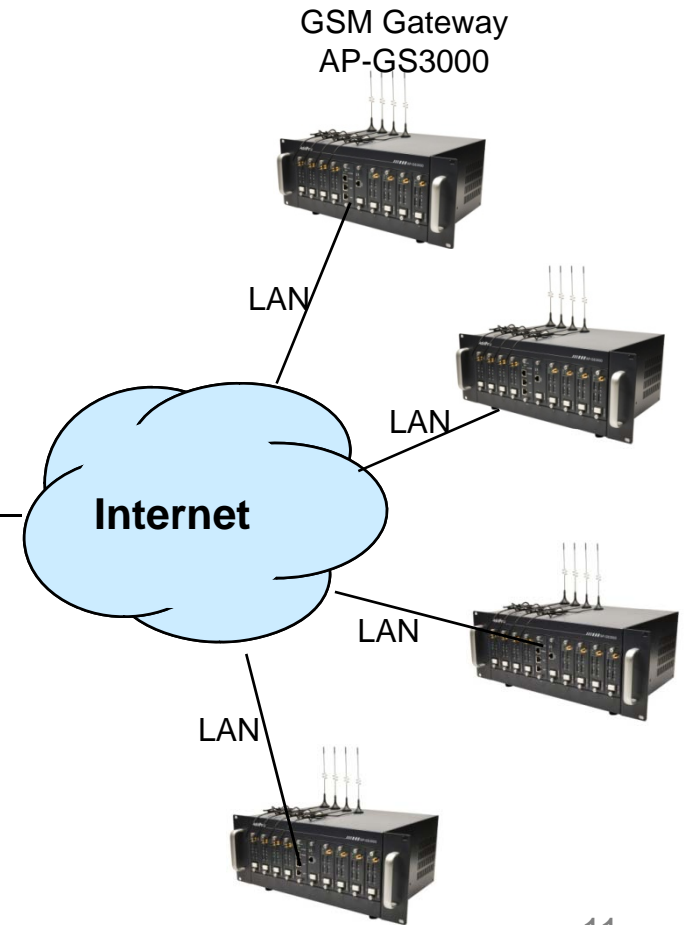
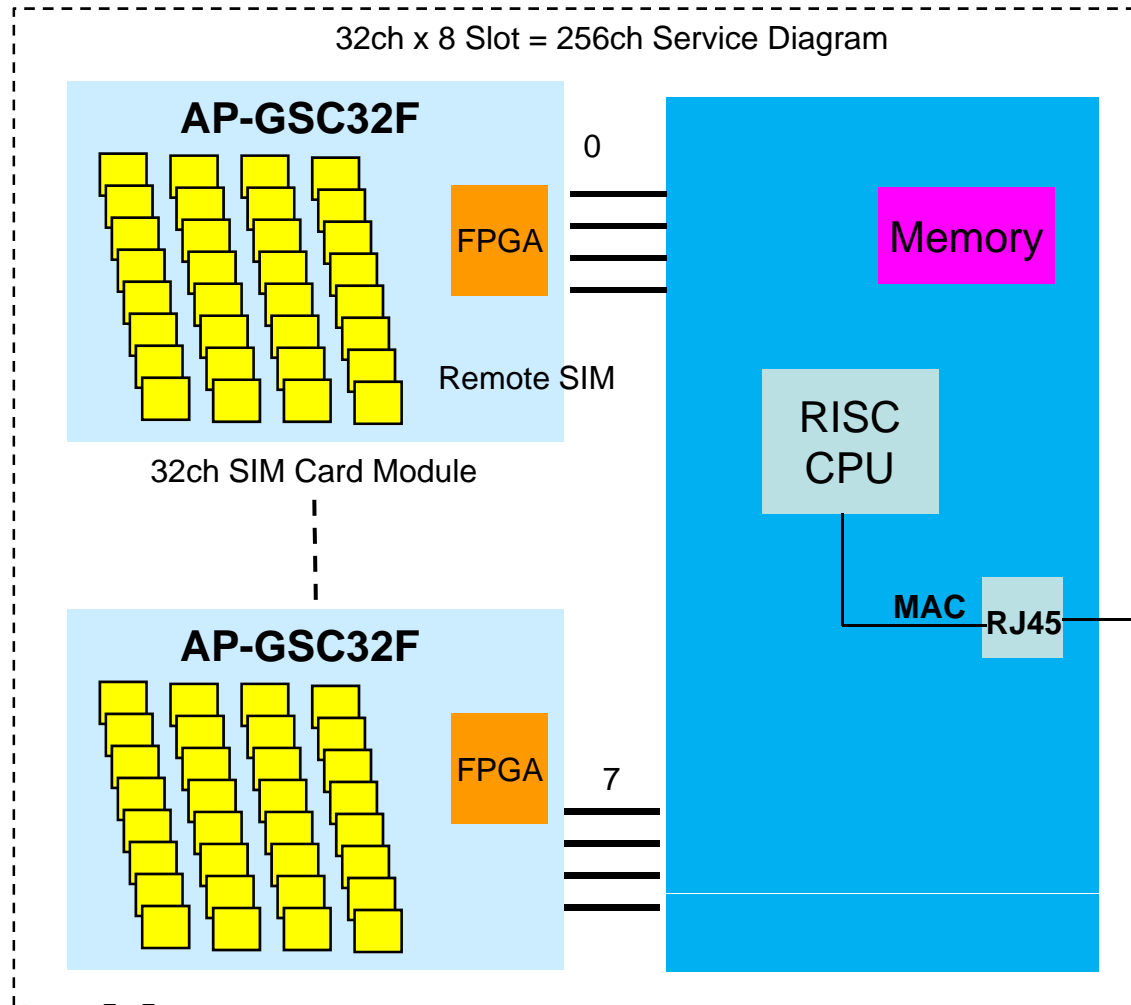
Hot-Swap Button

Hardware Specification

AP-GSS1800 256ch GSM SIM Server



GSM SIM Server Service Diagram



Network Protocols

AP-GSS1800 256ch GSM SIM Server

Basic Network Protocols

- ARP, IPv4, TCP, UDP, ICMP, SCTP, IGMP, MLD

Routing Protocol

- IPv4 : Static

Service Protocol

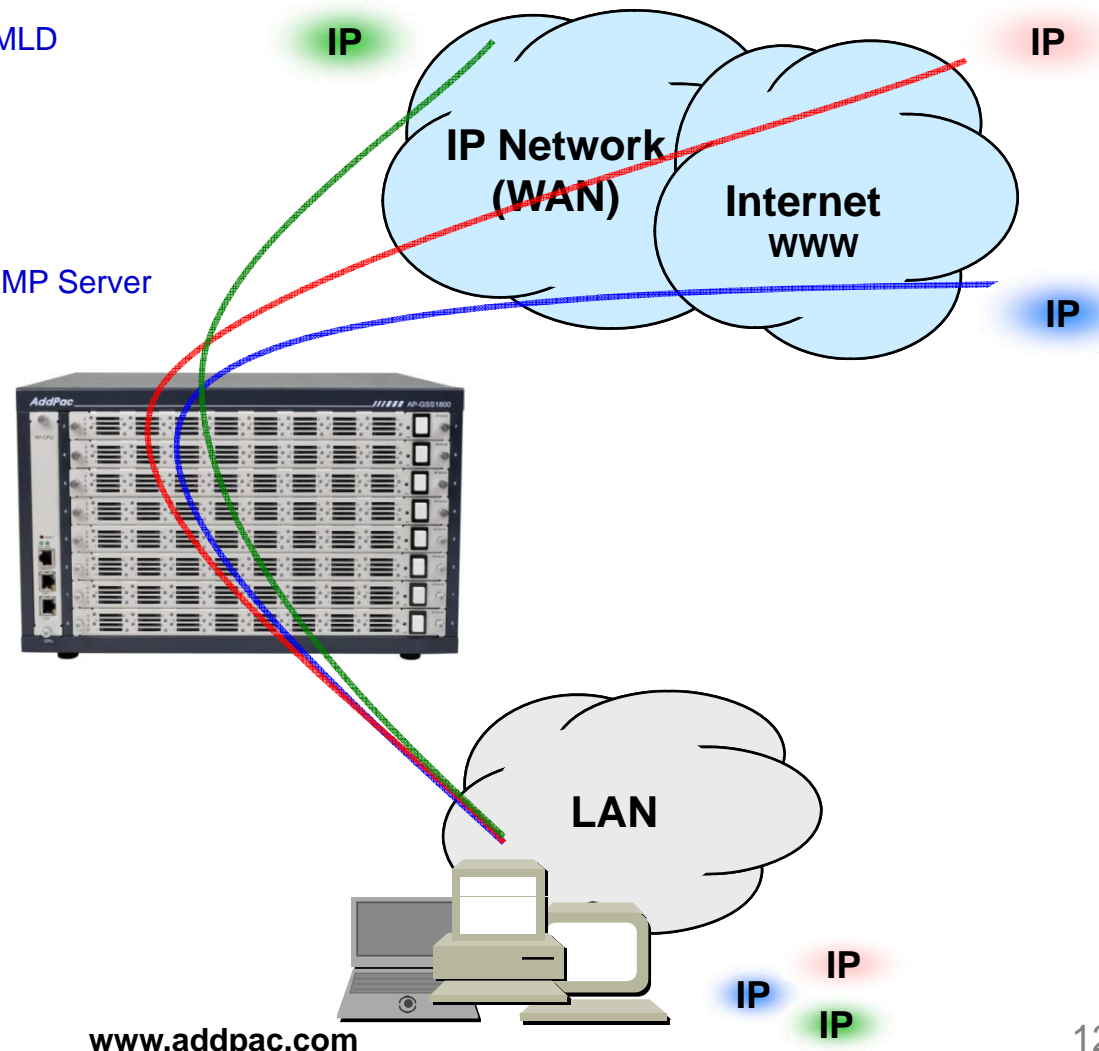
- FTP, Telnet, TFTP, DHCP Server/Relay, SNMP Server
- CDP (Cisco Discovery Protocol)
- DNS Resolver , DDNS(nsupdate)
- Bridge
- Syslog

IPv4 Address Configuration

- Fixed (Static)
- DHCP
- PPPoE

Miscellaneous

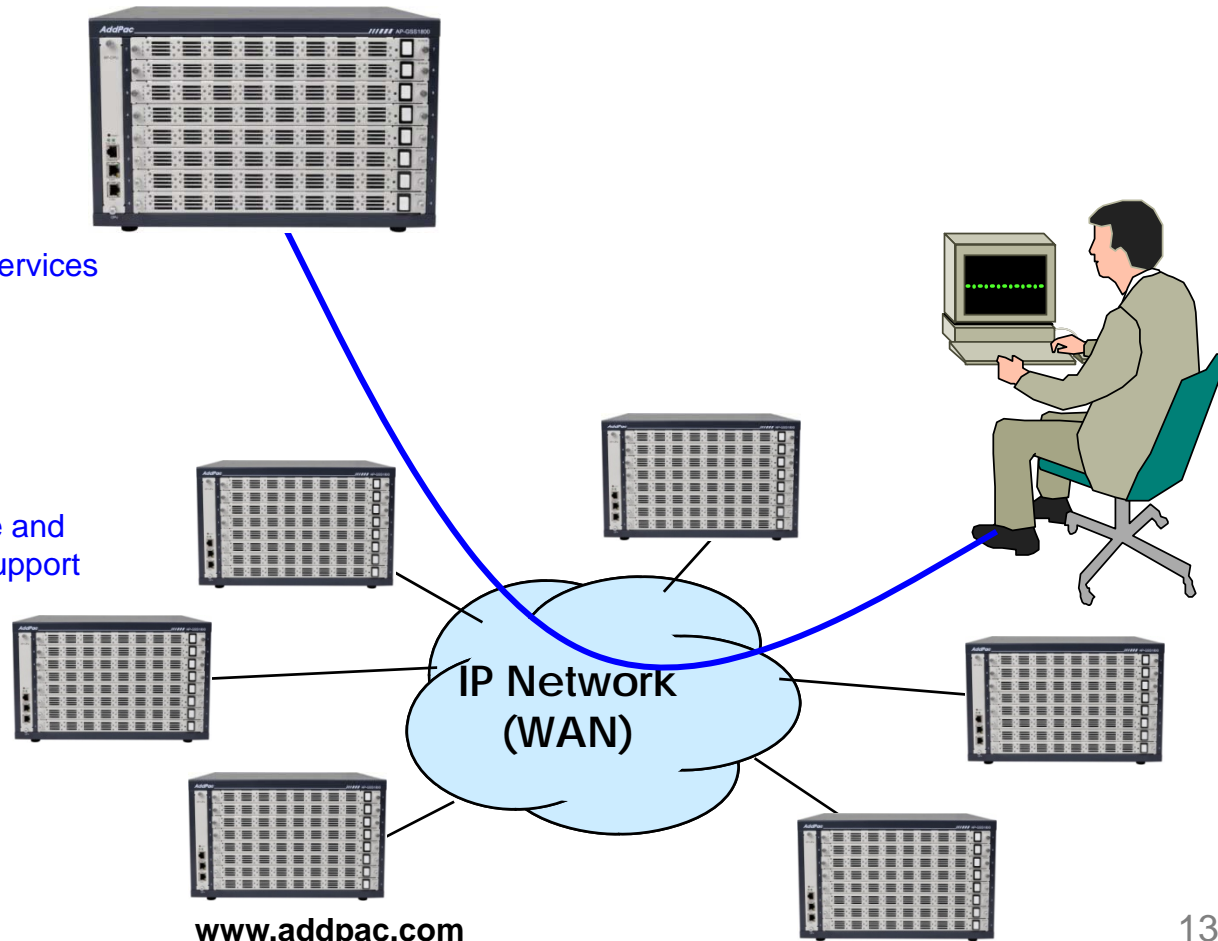
- Cisco Style CLI
- Standard & Extended IPv4 Access List
- Multi-level User Account Management
- IP accounting
- STUN Client



Network Management

AP-GSS1800 256ch GSM SIM Server

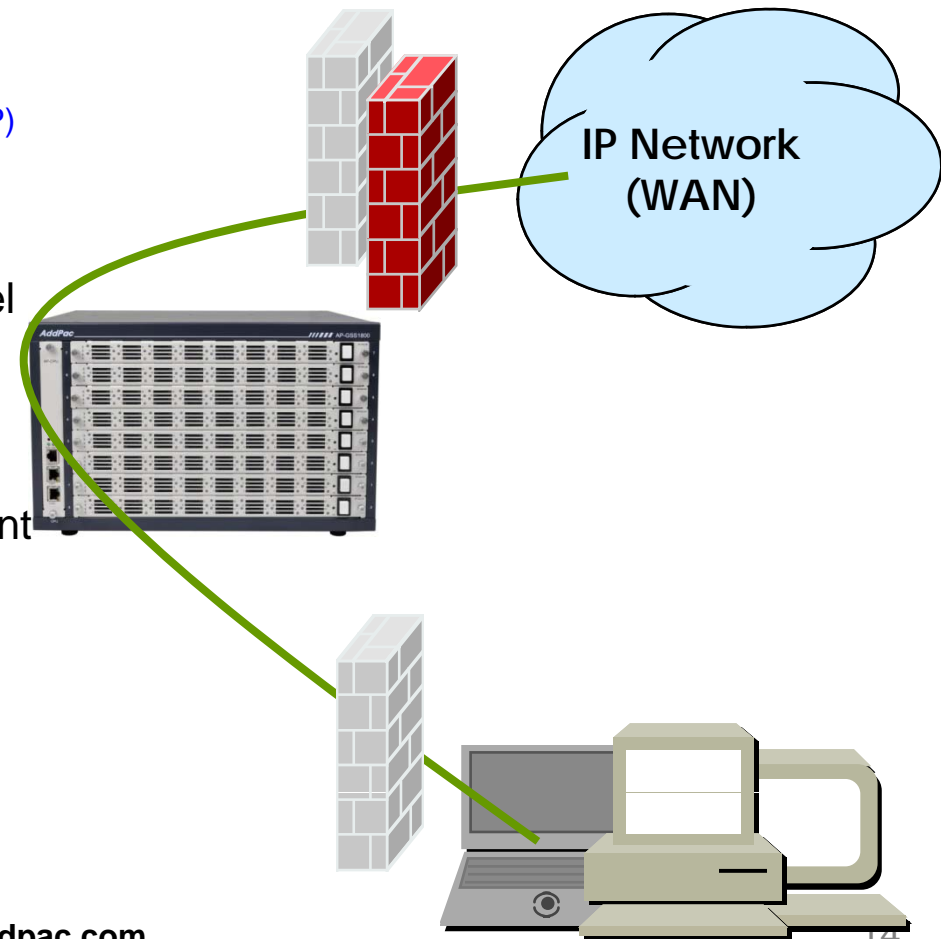
- SNMP
 - Standard Simple Network Management Protocol(SNMP) Agent support
 - MIB v1 and v2 Support
- Web-based Management
 - Smart Web Manager
- Watch-dog Function
 - Hardware, Software watch-dog services
- Remote Management
 - Telnet
 - Rlogin
- Auto Upgrade Service
 - HTTP server based APOS image and configuration file auto-upgrade support
- Batch Job Function
 - Text based script downloading
- Interoperable with Smart NMS Service
 - AddPac Smart Network Management System



Security Management

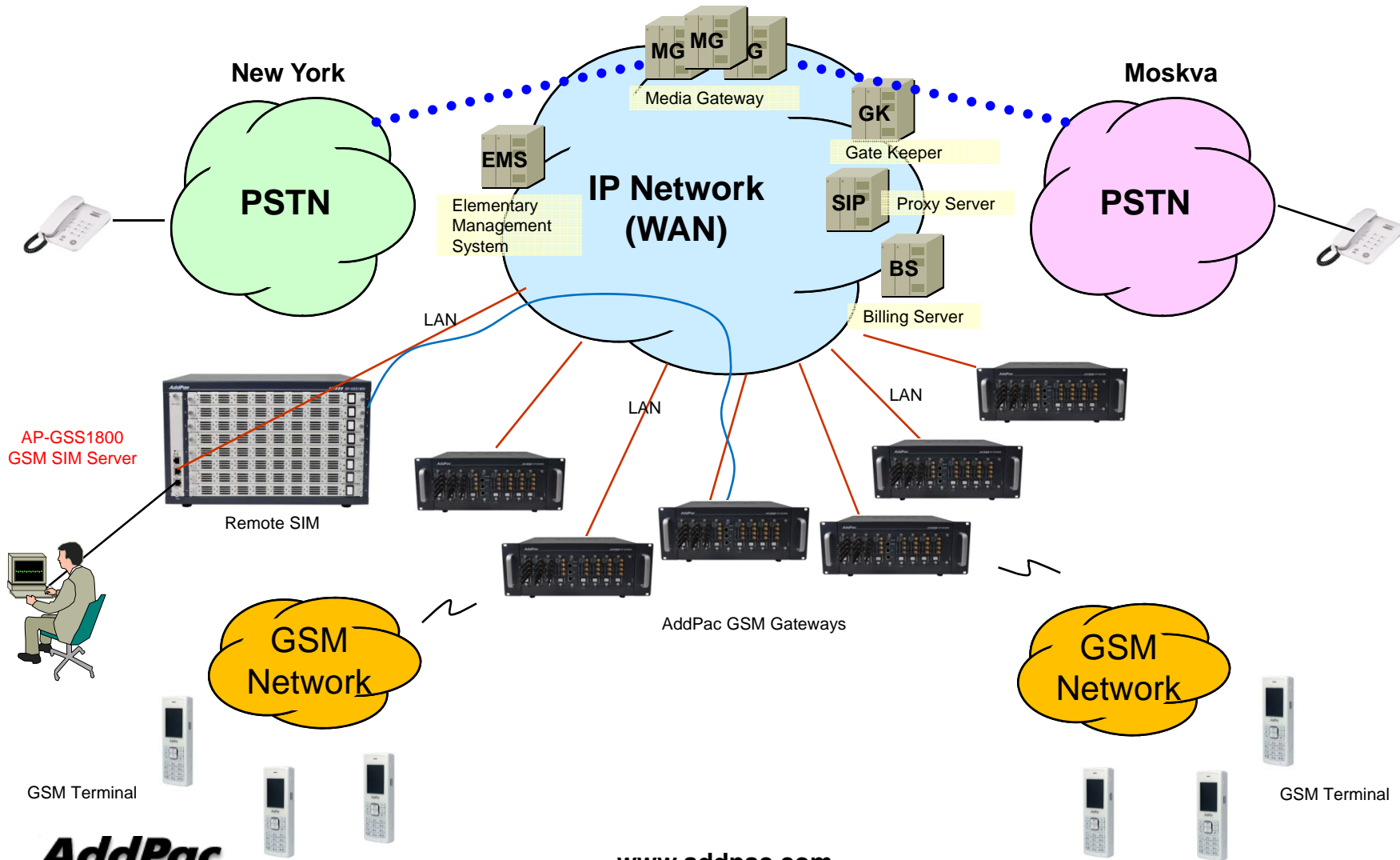
AP-GSS1800 256ch GSM SIM Server

- IP packet filtering
- IP access list
- User authentication function
 - Password Authentication Protocol (PAP)
 - Challenge Handshake Authentication Protocol (CHAP)
- Enable/Disable specific protocols
- Auto-square connect of Telnet session
- Account Management function for multi-level user
- SNMP/TELNET/FTP/HTTP/TFTP port assignment function
- SNMP/TELNET/FTP access list management
- Boot mode security checking function



Standard Application

AP-GSS1800 256ch GSM SIM Server



AddPac

www.addpac.com

Ordering Information

- AP-GSS1800 GSM SIM Server Hardware
 - AP-GSS1800 GSM Gateway Main Body
 - Octal(8) Module Slots excluding CPU Module
 - High-end Programmable RISC Microprocessor
 - 2-port 10/100/1000Mbps Gigabit Ethernet(RJ45)
 - 1-Port RS232C Console Interface(RJ45)
 - Option Module : AP-GSC32F GSM SIM Bank Module
 - Including Network Cable, Antenna, etc.
- Built-in APOS Internetworking Software for AP-GSS1800
- Including 1 Year Hardware Warranty
- Product Documents
 - Install and Operation Guide (PDF)
- Pricing
 - AddPac Technology Regional Sales Manager
 - Authorized Sales and Marketing Representatives
 - Please Contact www.addpac.com

GSM SIM Server Series

Thank you!

AddPac Technology Co., Ltd.
Sales and Marketing

Phone +82.2.568.3848 (KOREA)

FAX +82.2.568.3847 (KOREA)

E-mail sales@addpac.com